

# FORD

# 1980 PICKUP

SNYDER & GROSS FORD, INC.  
96 N. MAIN ST.  
SPRING GROVE, PA. 17362  
PHONE 225-4765



# First new truck of the 80's... tough new 1980 Ford

Ford's new pickups are built tough, and built for the changing needs of the 80's. Built with new aerodynamic design, new comfort features and new engineering advances.

There's more payload capacity than last year's models with comparable Gross Vehicle Weights. Famed Twin-I-Beam front suspension on

4x2's. New Twin-Traction Beam independent front suspension on 4x4's. Double-wall construction is used in the Styleside pickup box, tailgate and cab roof. And there's extensive corrosion protection. For comfort, an all-new cab interior. New anti-theft measures to help put your mind at ease.

Tested tough, too—a total of over a million miles at Ford's Arizona Proving Ground. The first new truck of the 80's!



## Flareside Pickup

Ford's famous shorty never looked so good! New inside and out. New Free Wheeling and Deluxe Tu-Tone combination now available.

## It's official!

- BEST MPG RATINGS of American-built standard pickups.
- PLUS THE LONGEST RANGE of any American-built pickups (LWB Styleside).

Based on EPA estimates, see page 12 for details.



## SuperCab Pickup

New style with distinctive "Twin-Window" treatment. Family-size room for six with optional rear bench seat. New comfort with front Captain's Chairs and console options.

Note: Some illustrations include optional equipment. See the standard features for each model, and the options shown or listed on pages 18 and 19.



## New "Six Wheeler" Pickup

Rugged dual-rear-wheel Styleside Pickup model tops Ford's line of high-payload pickups. Extra stability for heavy loads, trailers, campers.





## Ford Ranger Lariat. Top-of-the-line looks and luxury!

Ranger Lariat—Ford's finest pickup—leads off the new line for 1980. Slip behind the wheel. You'll discover a great outlook—both inside and out. The handsome new instrument panel has a canted center console for optional electronic digital clock, radio and air conditioning. And the design is as functional as it is handsome with the careful placement of controls and instruments to provide master driving control.

**Outside**, the attractive new styling is accented by a brushed aluminum lower bodyside molding with black vinyl insert, and the brushed aluminum tailgate has a blackout area that carries the black insert theme around the pickup. The new Lariat tape stripe (not included with Regular, Deluxe or Combination Tu-Tone) runs on top of the front fender and up the "B" pillar.



The Lariat plaque on each side and on the tailgate tells the world you're driving the top-of-the-line Ranger Lariat.



**Inside**, the new Ranger Lariat features: unique seat trim sew style in cloth and vinyl or all-vinyl • Lariat instrument panel has polished woodtone applique and bright "Ranger Lariat" script • Handy map boxes on the lower door panels are covered with rich carpeting • Complete molding system surrounds all windows • Thick cut-pile carpeting • Luxury-type steering wheel • And the attractive color-keyed cloth headlining is backed with foam insulation.

**Note:** Some illustrations include optional equipment. See the standard features for each model, and the options shown or listed on pages 18 and 19.

# Ford Ranger XLT

The stylish pacesetter of the 80's.

**Outside,** Ranger XLT features include (in addition to or in place of Ranger features shown at right): brushed aluminum tailgate applique with bright letters (Styleside Pickups) • XLT emblem on sides and tailgate • Flareside tailgate trim has raised FORD letters in a matching color to the outboard tape stripe of the surrounding dual tape stripe. In addition, Flaresides and dual-rear-wheel Stylesides include dual-colored narrow upper and lower bodyside tape stripes.



**Inside,** the roomy, comfortable Ranger XLT has: attractive seat trim of grained-vinyl with cloth inserts; all-vinyl is a no-charge option • Color-keyed cut-pile carpeting covers floor insulation padding • Carpeted storage area behind the seat • Carpeted lower door trim panels • Vinyl headliner on foam padding • Bright Ranger XLT on instrument panel • Bright aluminum door scuff plates • Full color-keyed moldings.

**Note:** Some illustrations include optional equipment. See the standard features for each model, and the options shown or listed on pages 18 and 19.



# Ford Ranger

Elegant new style and trim. **Outside**, the Ranger features (in addition to or in place of all the Custom features shown on pages 8 and 9): brushed aluminum lower bodyside molding • Bright insert around the back window • Bright hub caps (except with dual rears).



**Inside**, the Ranger features include: all-vinyl or cloth and vinyl seat trim • Courtesy lighting includes passenger side door switch, as well as driver's • Bright accents on door trim panels • Cigarette lighter • Woodtone accent around the steering wheel horn pad • Polished woodtone applique on instrument panel • Color-keyed seat belts • Folding seat back • Color-keyed floor mat.



**Behind-seat storage**  
(Shown with stow-line "Organizer" Truck Caddy for your valuables. A Ford Dealer installed accessory.)



# Ford Custom

Custom—the handsome, value-packed standard trim level for 1980 Ford Pickups!

**Outside:** Ford Custom includes all these features: gleaming front bumper • Bright grille surround • Bright windshield molding • Argent hub caps (except with dual rear wheels) • Pushbutton door handles • Bright 139-mm x 107-mm (5½" x 4½") left- and right-hand door-mounted mirrors.

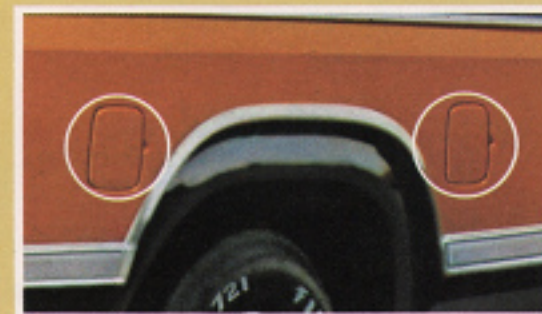


**Inside:** Ford's roomy, all-new interior features: attractive all-vinyl seat trim • Instrument panel with cluster trim applique and full-width pad • Glove box with latch • LH door courtesy light switch • Temperature gauge • Color-keyed windshield pillar, header, cowl side trim panels and door trim panels with foam-padded armrests • Scuff plates • Coat hook • Dome light • Floor insulation and carpet-texture rubber mat.



## Easily removable tailgate

One of the many new *standard features*, the Styleside tailgate comes right off . . . so campers slide right in.



## Long cruising range

Ford Styleside Pickups with optional auxiliary fuel tank provide a big dual tank capacity—up to 144L (38 gallons) on LWB for an extended cruising range between fill-ups. (See page 12 for details.)

**Additional standard features for '80 Ford Pickups.** Radial ply tires (F-100/150) • Maintenance-free battery • Long 457-mm (18") windshield wiper blades with dual port washer spray nozzle • Coolant recovery system • Rubber-isolated front coil springs (F-100/150); both front and rear springs are now computer-selected (F-100/150) • Improved steering response with lower overall steering ratio. New anti-theft features include: inside hood release • Locking steering column • Horizontal sliding door lock buttons • Entry shield on door latch • Door vent windows with steel pushbutton lock.

**Note:** Some illustrations include optional equipment. See the standard features for each model, and the options shown or listed on pages 18 and 19.



# Ford Free Wheeling Pickups

Ford Pickups have it all for the 80's with two new Free Wheeling options. And they're now available with all trim levels in both single rear wheel Styleside and Flareside Pickups. Here are all the exciting things you get in the new Ford Free Wheeling Packages.

**Free Wheeling "A"** includes: pinstriping, blackout grille and headlamp doors, and sport wheel covers (4).

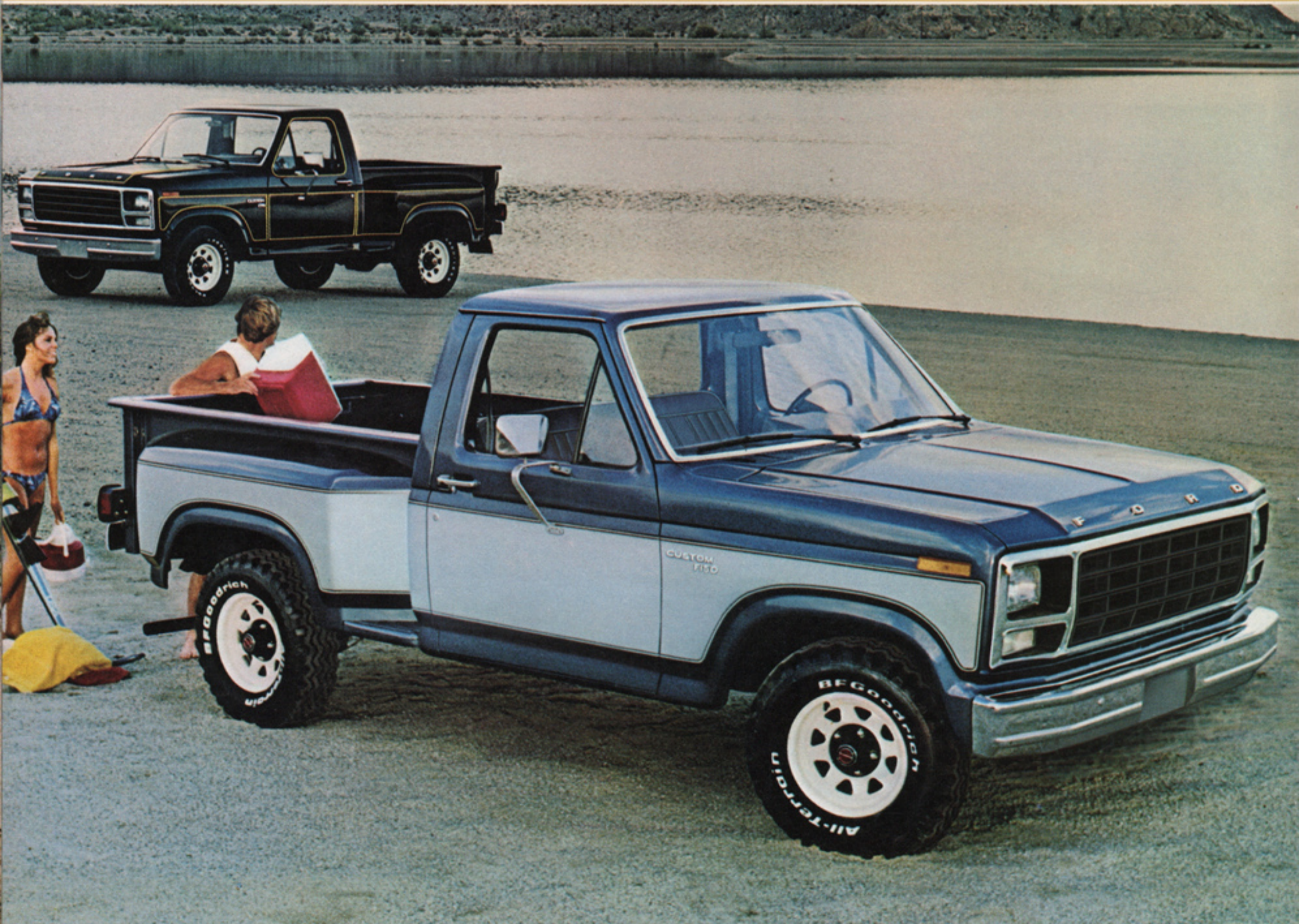
**Free Wheeling "B"** includes Package "A" plus: fog lamps and bumper guards, Handling Package, bright rear contour bumper (Styleside), bright channel bumper (Flareside), 10-hole aluminum wheels (in place of wheel covers); and inside: simulated leather-wrapped steering wheel plus Sports Instrumentation Package with tachometer, trip odometer, ammeter and oil pressure gauge.

In addition, Styleside 4x4's with Free Wheeling "B" include GT bar and styled steel wheels in place of 10-hole aluminum.

Do your own thing. Add to your Free Wheeling fun with Ford's wide choice of individual options like AM/FM stereo radio with either 8-track or cassette tape player and CB radio.



(The Flareside Pickup shows off the new optional Deluxe Tu-Tone—a new alternative to pinstriping—in combination with Free Wheeling. While the Flareside [left] and Styleside [above] display pinstriping that's just one of the new Free Wheeling items.)



# New Ford SuperCab

For 1980, the Ford SuperCab features new comfort with optional reclining Captain's Chairs, center console and more. And you have SuperCab's traditional family-size room. Room for a family of six with standard front bench seat plus rear bench seat option. Rear center facing jump seats are an alternative option in the spacious SuperCab.



There's 1.1 cubic meters (39 cu. ft.) of interior load space, without optional rear seat, for carrying cargo, gear or luggage. Or the rear bench seat folds flat with its steel back providing a load floor. Also, the jump seats fold up out of the way to clear the floor.

And you can tell the new 1980 SuperCab from afar with distinctive "Twin-Window" treatment—standard!

**Note:** Some illustrations include optional equipment. See the standard features for each model, and the options shown or listed on pages 18 and 19.





# Tough new Ford Pickups

Ford's new pickup is built tough with the best MPG rating and longest range of any American-built standard pickup.

## Best MPG Ratings

**19** EPA Est. MPG **29** HWY. Est. MPG (49 State)

**17** EPA Est. MPG **25** HWY. Est. MPG (California)

F-100/150 with Std. 4.9L (300) Six and opt. 4-spd. overdrive transmission.

### More mileage information

Compare the above estimates with others. Your mileage and range may differ depending on speed, distance and weather. Actual highway mileage and range will probably be less than estimated. Excludes Diesels and car-trucks.

## Longest Range

**722** Miles Est. Range **1,102** Miles Hwy. Est. Range (49 State)

**646** Miles Est. Range **950** Miles Hwy. Est. Range (Calif.)

Long WB Styleside with std. 72L (19 gal.) tank plus opt. 72L (19 gal.) auxiliary. Total 144L (38 gal.). Multiply by EPA estimated MPG 19 (17 Calif.), 29 (25 Calif.) hwy. estimate . . . to determine maximum estimated ranges.



## Roomy interior

All-new cab has more leg room than last year with generous head and shoulder room that's comparable. Handsome new trim and instrument panel with brow-mounted cluster warning lights. New glove box door has horizontal hold position and coin/token slots plus two cup depressions on the inner side of door.



## Tested tough

The 1980 Ford Pickups are tested tough, too. A total of over a million miles at Ford's Arizona Proving Ground.

## Full engine availability

All '80 Fords offer a wide range of power-matched engines, transmissions.



## Independent front suspension

Now! Both Ford 4x4 and 4x2 pickups provide the benefits of independent front suspension. New Twin-Traction Beam on 4-wheelers and Twin-I-Beam on 4x2 pickups.



## Bigger payloads

'80 Ford payloads are bigger than last year's with comparable Gross Vehicle Weights. New "Six Wheeler" pickup capacity—up to 4535 kg (10,000 lb.) GVWR.

## Rust protection

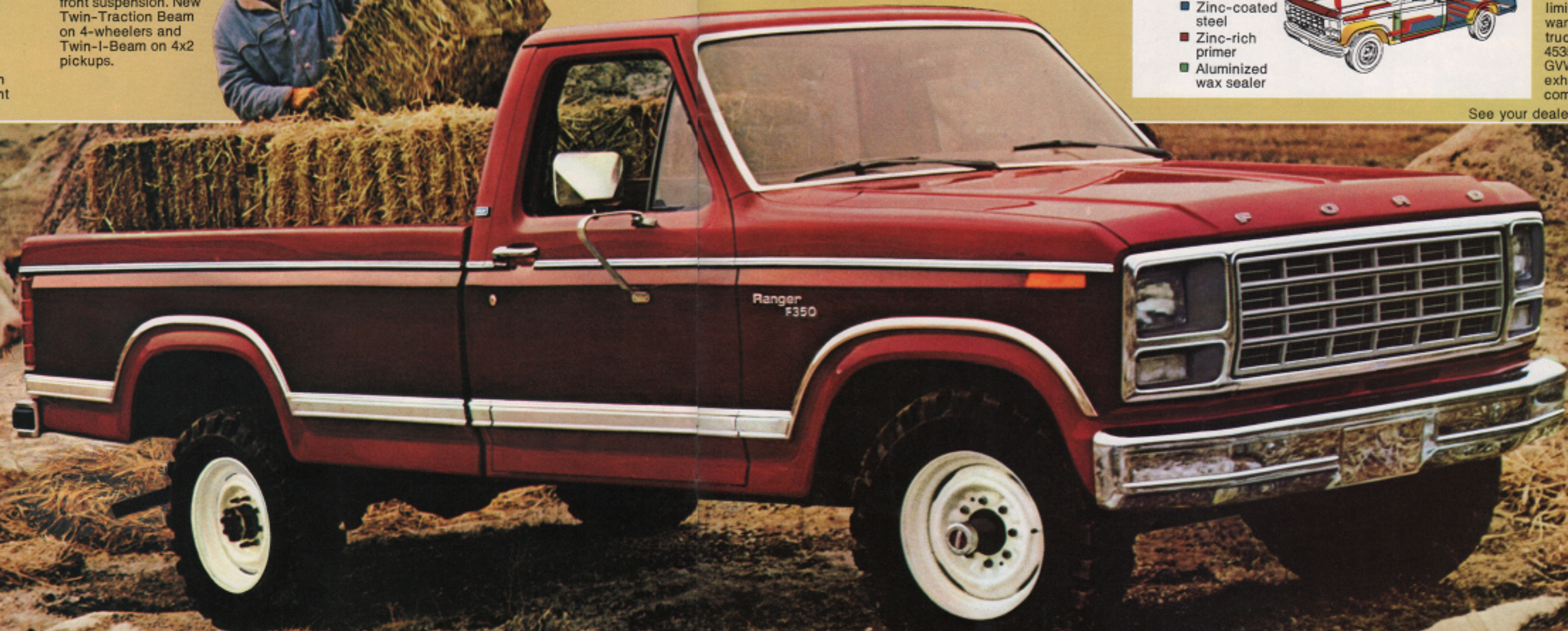
- Polymer fender liners
- Galvanized steel
- Zinc-coated steel
- Zinc-rich primer
- Aluminized wax sealer



## New limited corrosion perforation warranty

No-cost 36-month limited perforation warranty on trucks under 4535 kg (10,000 lb.) GVWR excludes exhaust system components.

See your dealer for full details.



# Camper and Trailer Towing Tough

Leading the way into the 80's! The tough new Ford is designed to put your mind at ease . . . to put the FUN in a functional RV pickup. Right on for today's recreation uses. Ford Pickups offer complete "Trailer Towing Packages" or "Camper Special Packages" to provide the basics most of these type vehicles need.

## Trailer Towing Packages

Ford offers either Light Duty or Heavy Duty Trailer Towing Packages to match your hauling needs. Gross Combination Weight Ratings go up to 6441 kg (14,200 lb.) for 5th wheel, 6463 kg (14,250 lb.) for conventional trailers.

**Light Duty Trailer Towing Package\*** includes (for trailers up to 907 kg [2000 lb.]):

- Extra engine cooling
- Heavy Duty flasher
- Wiring harness\*\*
- Argent rear step bumper
- Trailer Special emblem

Note: Some illustrations include optional equipment. See the standard features for each model, and the options shown or listed on pages 18 and 19.

**Heavy Duty Trailer Towing Package** includes (for trailers up to 3628 kg [8000 lb.]):

- Extra engine cooling
- Heavy Duty flasher
- 60 amp. alternator
- 63 amp-hr. maintenance-free battery
- Oil pressure gauge
- Ammeter
- Bright low-mount recreation swing-away mirrors, 228mm x 152mm (9" x 6")
- Handling Package
- External transmission oil cooler with SelectShift automatic transmission
- Wiring harness\*\*
- Trailer Special emblem

## Camper Special Package

Camper Special Packages are optional on F-250 and F-350 Regular Cab and SuperCab Styleside Pickups to accommodate slide-in campers.

**New F-350 Regular Cab "Six Wheeler"** Pickup with Camper Special Package provides the load-carrying capacity and stability for big slide-in campers.

Note: To help assure optimum performance, SelectShift automatic transmission is required for all towing applications. See your Ford Dealer for additional required or recommended equipment (engines, axle ratios, etc.).

Camper Special Package includes:

- 60 amp. alternator
- 63 amp-hr. maintenance-free battery
- Oil pressure gauge
- Ammeter
- Bright low-mount recreation swing-away mirrors, 228mm x 152mm (9" x 6")
- Extra engine cooling
- Stabilizer bars—front and rear
- Heavy Duty shocks—front and rear
- Camper wiring harness\*\*
- External transmission oil cooler with SelectShift automatic transmission
- Camper Special emblem

\*Styleside Pickups.

\*\*Includes 12-volt 7-wire (identified) sealed cable with connectors.

(A) Six Wheeler Pickup (B) SuperCab Pickup (C) Regular Cab Pickup



(B)

(C)

# Specifications

Ford makes it easy to pick one tough truck with equal or more payload than the comparable Gross Vehicle Weights for '79.

The table below offers a guide to help select the right pickup for your job. Simply read columns from left to right to find the pickup box length, series and payload package that best matches your needs. And additional spec's are shown at the far right.

Your Ford Dealer should be consulted for complete information to help you make the right selection.



**Colors** There are 17 color choices for 1980 pickups: 1. Raven Black, 2. Wimbledon White, 3. Candyapple Red, 4. Silver Metallic, 5. Light Sand, 6. Maroon, 7. Dark Chamois Metallic, 8. Midnight Blue Metallic, 9. Medium Blue, 10. Light Caramel, 11. Dark Pine Metallic, 12. Medium Gray Metallic, 13. Dark Silver Blue Metallic, 14. Light Medium Pine, and optional Glamour colors: 15. Chamois Glow, 16. Walnut Glow, 17. Sand Glow.

## Colorful Ford Tu-Tone and tape stripe choices:

**Regular Tu-Tone.** The accent color covers the roof and upper back panel. Includes dual tape stripe to divide colors. (Shown with optional accent tape stripe.)

**Deluxe Tu-Tone.** Accent color on the center bodyside area and on tailgate below upper molding. Moldings are included as needed.

**Combination Tu-Tone.** Regular and Deluxe Tu-Tones combined.

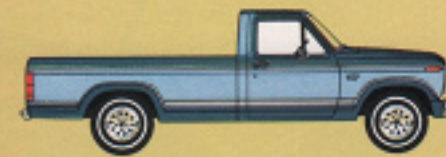
**Victoria Tu-Tone.** All-new—featuring the accent color applied to hood, upper fender, around door window, and the lower bodyside.

**Accent tape stripe.** This new bodyside tape runs from front marker lamp to the taillamp. Available separately or with Regular or Victoria Tu-Tone.

**Interior Colors** Caramel, Medium Blue, Red, Black, Sand or Pine (except SuperCab) keyed to exteriors.



Regular Tu-Tone plus accent tape stripe



Combination Tu-Tone



Deluxe Tu-Tone



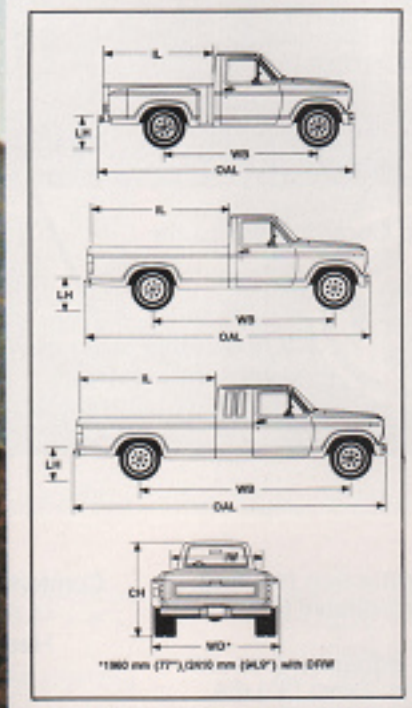
Victoria Tu-Tone

PAYLOAD PACKAGE SELECTOR (4x2)				
PICKUP BOX LENGTH*	SERIES	DESIRED PAYLOAD**/GVWR		TIRES
2026 mm (6 1/2 ft.) Flareside	F-100	560 kg (1240 lb.)	2132 kg (4700 lb.)	Std. P195/75R 15SL Std.†
2084 mm (6 3/4 ft.) Styleside	F-100	575 kg (1270 lb.)	2132 kg (4700 lb.)	Std. P195/75R 15SL Std.†
2026 mm (6 1/2 ft.) Flareside	F-100	675 kg (1490 lb.)	2268 kg (5000 lb.)	Opt. P205/75R 15SL Req.
2084 mm (6 3/4 ft.) Styleside	F-100	690 kg (1520 lb.)	2268 kg (5000 lb.)	Opt. P205/75R 15SL Req.
2495 mm (8 ft.) Styleside	F-100	550 kg (1215 lb.)	2132 kg (4700 lb.)	Std. P195/75R 15SL Std.†
2495 mm (8 ft.) Styleside	F-100	730 kg (1610 lb.)	2336 kg (5150 lb.)	Opt. P205/75R 15SL Req.
2026 mm (6 1/2 ft.) Flareside	F-150	790 kg (1725 lb.)	2381 kg (5250 lb.)	Std. P215/75R 15SL Std.
2084 mm (6 3/4 ft.) Styleside	F-150	795 kg (1760 lb.)	2381 kg (5250 lb.)	Std. P215/75R 15SL Std.
2026 mm (6 1/2 ft.) Flareside	F-150	1030 kg (2290 lb.)	2653 kg (5850 lb.)	Opt. P235/75R 15XL Req.
2084 mm (6 3/4 ft.) Styleside	F-150	1045 kg (2310 lb.)	2653 kg (5850 lb.)	Opt. P235/75R 15XL Req.
2495 mm (8 ft.) Styleside	F-150	860 kg (1900 lb.)	2472 kg (5450 lb.)	Std. P215/75R 15SL Std.
2495 mm (8 ft.) Styleside	F-150	1135 kg (2500 lb.)	2766 kg (6100 lb.)	Opt. P235/75R 15XL Req.
2495 mm (8 ft.) Styleside	F-250	1185 kg (2620 lb.)	2880 kg (6350 lb.)	Std. 8.00 x 16.5D Std.
	F-250	1425 kg (3145 lb.)	3129 kg (6900 lb.)	Opt. 8.00 x 16.5E Req.
	F-250	1735 kg (3835 lb.)	3470 kg (7650 lb.)	Opt. 8.75 x 16.5E Req.
	F-250	1725 kg (3810 lb.)††	3538 kg (7800 lb.)	Opt. 8.75 x 16.5E Req.
2495 mm (8 ft.) Styleside	F-350	2110 kg (4650 lb.)	3923 kg (8650 lb.)	Std. 9.50 x 16.5E Std.
Dual rear wheel	F-350	1940 kg (4275 lb.)	3946 kg (8700 lb.)	Opt. 8.00 x 16.5D DR Req.
Dual rear wheel	F-350	2480 kg (5475 lb.)	4513 kg (9950 lb.)	Opt. 8.00 x 16.5E DR Req.
Dual rear wheel	F-350	2435 kg (5375 lb.)‡	4535 kg (10,000 lb.)	Opt. 8.00 x 16.5E DR Req.
<b>SuperCab Pickups</b>				
2084 mm (6 3/4 ft.) Styleside	F-150	900 kg (1990 lb.)	2608 kg (5750 lb.)	Std. P225/75R 15SL Std.
2084 mm (6 3/4 ft.) Styleside	F-150	1050 kg (2325 lb.)	2766 kg (6100 lb.)	Opt. P235/75R 15XL Req.
2495 mm (8 ft.) Styleside	F-150	960 kg (2120 lb.)	2698 kg (5950 lb.)	Std. P225/75R 15SL Std.
2495 mm (8 ft.) Styleside	F-150	1110 kg (2450 lb.)	2857 kg (6300 lb.)	Opt. P235/75R 15XL Req.
2084 mm (6 3/4 ft.) Styleside	F-250	1120 kg (2470 lb.)	2880 kg (6350 lb.)	Std. 8.00 x 16.5D Std.
	F-250	1650 kg (3640 lb.)	3447 kg (7600 lb.)	Opt. 8.75 x 16.5E Req.
	F-250	1640 kg (3625 lb.)††	3515 kg (7750 lb.)	Opt. 8.75 x 16.5E Req.
2495 mm (8 ft.) Styleside	F-250	1175 kg (2595 lb.)	2993 kg (6600 lb.)	Std. 8.00 x 16.5D Std.
	F-250	1410 kg (3115 lb.)	3243 kg (7150 lb.)	Opt. 8.00 x 16.5E Req.
	F-250	1705 kg (3765 lb.)	3560 kg (7850 lb.)	Opt. 8.75 x 16.5E Req.
	F-250	1695 kg (3745 lb.)††	3628 kg (8000 lb.)	Opt. 8.75 x 16.5E Req.
2495 mm (8 ft.) Styleside	F-350	2120 kg (4680 lb.)	4037 kg (8900 lb.)	Std. 9.50 x 16.5E Std.

\*Fl. nominal. \*\*Maximum allowable weight of people, cargo, body and equipment. †Fiberglass belted. ‡Requires dual fuel tanks. ††Requires 5.8L (351) V-8 engine and optional transmission.

STYLESIDE PICKUP DIMENSIONS (4x2)							
Cab Type	Series	WB mm/in.	Box L mm/ft.*	IW max. load width mm/in.	LH mm/in.	CH mm/in.	OAL mm/in.
Regular Cab	F-100	2967/116.8	2084/6 1/2	1778/70	700/27.6	1756/69.1	4879/192.1
	F-100	3378/133	2495/8	1778/70	699/27.5	1754/69	5290/208.3
	F-150	2967/116.8	2084/6 1/2	1778/70	732/28.8	1780/70	4879/192.1
	F-150	3378/133	2495/8	1778/70	731/28.7	1777/69.9	5290/208.3
	F-250	3378/133	2495/8	1778/70	794/31.3	1831/72	5290/208.3
SuperCab	F-350	3378/133	2495/8	1778/70	809/31.9	1852/72.9	5290/208.3
	F-350 DR	3378/133	2495/8	1778/70	777/30.6	1826/71.9	5290/208.3
	F-150	3526/138.8	2084/6 1/2	1778/70	733/28.9	1793/70.6	5438/214.1
	F-150	3937/155	2495/8	1778/70	732/28.8	1791/70.5	5849/230.3
	F-250	3526/138.8	2084/6 1/2	1778/70	786/30.9	1840/72.4	5438/214.1
Regular Cab	F-250	3937/155	2495/8	1778/70	785/30.9	1837/72.3	5849/230.3
	F-350	3937/155	2495/8	1778/70	797/31.3	1857/73.1	5849/230.3
	<b>FLARESIDE PICKUP DIMENSIONS (4x2)</b>						
F-100	2967/116.8	2026/6 1/2	1372/54	724/28.5	1756/69.6	4770/187.8	
F-150	2967/116.8	2026/6 1/2	1372/54	756/28.5	1780/70	4770/187.8	

\*FL Nominal. †Empty.



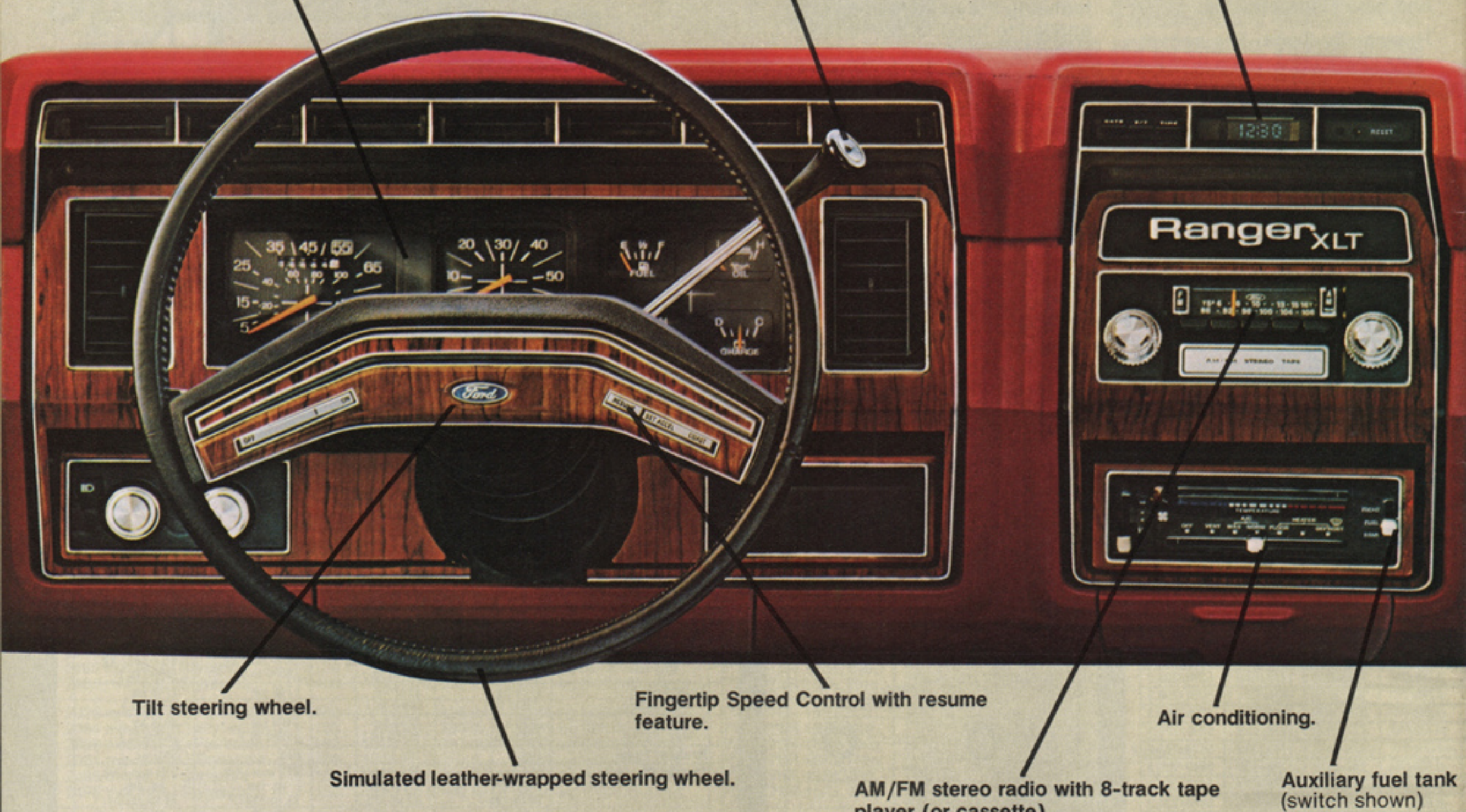
EQUIPMENT	TWO-WHEEL DRIVE (See 4-Wheeler catalog for 4x4 specifications)			
	F-100	F-150	F-250	F-350
<b>Payloads:</b>	(See payload chart at far left)			
<b>Maximum GVWR:</b>	2336 kg (5150 lb.)	2766 kg (6100 lb.) SC—2857 kg (6300 lb.)	3538 kg (7800 lb.) SC—3628 kg (8000 lb.)	4535 kg (10,000 lb.) SC—4037 kg (8900 lb.)
<b>Axle, Front:</b>	1179 kg (2600 lb.)	1542 kg (3400 lb.)	1746 kg (3850 lb.)	1746 kg (3850 lb.)
<b>Axle Rear:</b>	1270 kg (2800 lb.)	1701 kg (3750 lb.)	2404 kg (5300 lb.)	2835 kg (6250 lb.)
<b>Brakes: Power</b>	Opt.*	Std.	Std.	Std.
<b>Clutch: Dia./Area</b>	254 mm/617 sq. cm 10 in./95.7 sq. in.	254 mm/617 sq. cm 10 in./95.7 sq. in.	279 mm/798 sq. cm 11 in./123.7 sq. in.	279 mm/798 sq. cm 11 in./123.7 sq. in.
<b>Electrical:</b>				
Battery (amp-hr.)	36‡	36‡	36‡	36‡
Opt.	63‡	63‡	63‡	63‡
Alternator (amp.)	81 aux. with 63‡	81 aux. with 63‡	81 aux. with 63‡	81 aux. with 63‡
Opt.	60	60	60	60
<b>Engine: Displacement</b>	4.9L (300) Six 5.0L (302) V-8	4.9L (300) Six 5.0L (302) V-8 5.8L (351) V-8	4.9L (300) Six 5.0L (302) V-8 5.8L (351) V-8	4.9L (300) Six 5.0L (302) V-8 5.8L (351) V-8 6.6L (400) V-8
<b>Fuel Tank Capacity: Refill</b>				
Short wb.	62L (16.5 gal.)	62L (16.5 gal.)	SC—52L (16.5 gal.)	—
Long wb.	72L (19 gal.)	72L (19 gal.)	72L (19 gal.)	72L (19 gal.)
<b>Dual Tank Opt.**</b>				
Short wb.	134L (35.5 gal.)	134L (35.5 gal.)	SC—134L (35.5 gal.)	—
Long wb.	144L (38 gal.)	144L (38 gal.)	144L (38 gal.)	144L (38 gal.)
<b>Shock Absorbers:</b>				
Opt.	Front & Rear HD	Front & Rear HD	Front & Rear HD	Front & Rear HD
<b>Springs: Front</b>		(Computer Selected)	(Computer Selected)	(Computer Selected)
Rear		1878 kg (4142 lb.)	1878 kg (4142 lb.)	2872 kg (6332 lb.)
Opt. Heavy Duty, Front		(one load range above computer selection, unless maximum already selected)	HD†	HD†
Opt. Heavy Duty, Rear		(one load range above computer selection, unless maximum already selected)	HD†	HD†
<b>Steering: Optional</b>		Integral Power	Integral Power	Integral Power
<b>Transmission:</b>	3-spd. sync. 4-spd. overdrive SelectShift auto.	3-spd. sync. 4-spd. overdrive 4-spd. SelectShift auto.	3-spd. sync. 4-spd. overdrive 4-spd. SelectShift auto.	4-spd. SelectShift auto.
<b>Wheels: Type—</b>	(5) 5-hole—5.5	(5) 5-hole—5.5	(4) 8-hole—6.0	(4) 8-hole—6.75
<b>Rim Size</b>	5.5	5.5	6.0	6.75
<b>Tires: Tubeless</b>	P195/75R 15SL Radials	P215/75R 15SL SC—P225/75R 15SL	8.00 x 16.50	9.50 x 16.5E
<b>Optional</b>	Both tubeless and tube-type in sizes to match GVWR requirements. Use adequate tires for type of service. Consult your Ford Dealer.			

\*Standard rear drum brakes are 280 mm x 57 mm (11 1/8" x 2 3/4"), with optional power brakes, rear drum size is 254 mm x 64 mm (10" x 2 1/2") with standard 2132 kg (4700 lb.) GVWR only.  
\*\*Stylesides only. †Maintenance-free.  
‡For selection of HD rear springs and auxiliary, see your Ford Dealer.  
SC = SuperCab.

Sports Instrumentation includes tachometer (0 to 6000 RPM), ammeter, oil pressure gauge and trip odometer.

SelectShift automatic transmission.

Electronic Digital Clock tells the time, date and lapsed trip time at the push of a button.



Tilt steering wheel.

Fingertip Speed Control with resume feature.

Air conditioning.

Simulated leather-wrapped steering wheel.

AM/FM stereo radio with 8-track tape player (or cassette).

Auxiliary fuel tank (switch shown)

**Note:** Options are not necessarily available in all series or models. Some options are included, or are not available, in combination with other options. SRW = Single Rear Wheel.

## Options

For the Ford Pickup of your choice, there is a wide selection of Ford options. These can multiply the usefulness and enjoyment of your pickup many times over. Go down this list and check off the options that will help you "create" a Ford Pickup just right for your work or personal needs.

### Appearance

- Chrome grille.
- Accent tape stripe (for SRW Stylesides).
- Lower bodyside molding with black vinyl insert (for SRW Stylesides).
- Bright wheelip moldings (for SRW Custom Stylesides).

- Upper bodyside protection molding.
- Bright box rails for 2495mm (8') Styleside Pickups.
- GT bar with three equipment mounting tabs on top. White 76mm (3") dia. tubular design (Stylesides only).

### Audio

- All Ford radios include traveler's advisory setting.
- AM radio.
  - AM/FM monaural (single speaker).
  - Dual door speakers (for single speaker radios).
  - AM/FM stereo (speakers mounted in door panels).
  - AM/FM stereo with 8-track tape player.
  - AM/FM stereo with cassette tape player.

- (A)  40-channel CB radio.

### Comfort/Convenience

- Air conditioning.
- Heater:
- High Output.
  - ComfortVent.
- Convenience Group includes intermittent wipers, 305mm (12") day/night mirror, map box on doors, headlamp-on warning buzzer, and courtesy light switch on RH door with Custom.
  - Electronic Digital Clock.
  - Fingertip Speed Control.
  - Light Group includes lights in glove box, ashtray, under instrument panel, dome lamp with map light, cargo box light, headlamp-on warning buzzer, and courtesy light switch on RH door with Custom. Also new movable underhood worklight with 20-ft. retractable cord.
  - Western mirrors, bright low-mount swingaway, 228mm x 152mm (9" x 6").



(A)



(E)



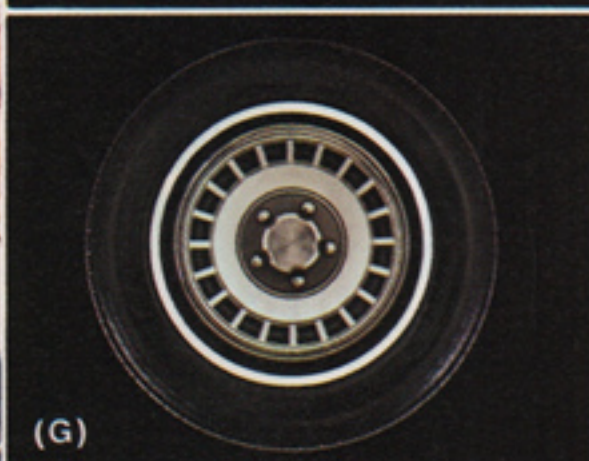
(B)



(F)



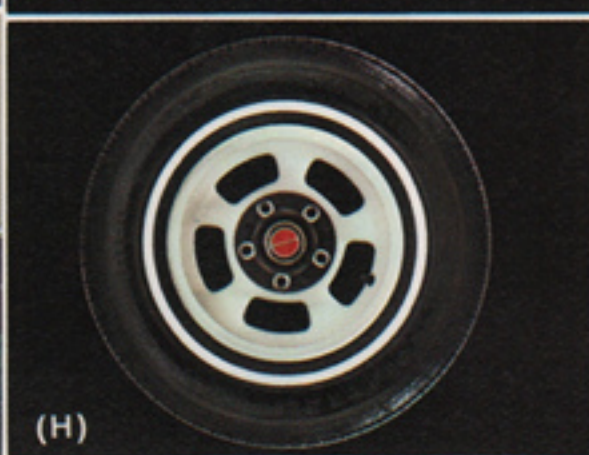
(C)



(G)



(D)



(H)

(Performance continued)

- Gauges: oil pressure and ammeter.
- SelectShift automatic transmission.
- Stabilizer bars, front and rear.
- Engine block heater: single 600 watt with Six and 5.0L (302) V-8, dual with larger V-8's.
- Extra Engine Cooling Package.
- Super Engine Cooling Package.
- Special Altitude Performance Package.
- Camper Special Package, see pages 14 and 15.
- Trailer Towing Packages, see pages 14 and 15.

#### Protection

- Dual horns.
- Fog lamps (include plastic covers and bright front bumper guards).
- Halogen headlamps.
- Inside locking hood release.
- Roof clearance lights (5).
- Exterior Protection Group includes bright door edge guards, front bumper guards and front bumper rub strip.
- Security Lock Group includes locking gas cap(s), inside hood release and glove box. Also spare tire lock (with under frame and in-box carrier).
- Sports instrumentation.
- Tie-down hooks, eight chromed (for Stylesides).

Rear bumpers:

- Argent step (for Stylesides).
- Chrome step (for SRW Stylesides).
- Chrome channel (for Flaresides).
- Chrome contour (for SRW Stylesides).

#### Wheels and Wheel Covers

- Deluxe wheel covers (4).
- (E)  Styled steel painted white (5), or (4) with steel spare.
- (F)  10-hole polished forged aluminum with clear plastic coating (5), or (4) with steel spare.
- (G)  Sport wheel covers (4).
- (H)  5-slot brushed forged aluminum with clear plastic coating (5), or (4) with steel spare.

Free Wheeling Packages (see page 10).

- Recreation mirrors, bright low-mount swingaway, 228mm x 152mm (9" x 6").
- Power steering.
- Simulated leather-wrapped steering wheel.

- (B)  Sliding rear window (tinted).
- Tilt steering wheel.
- Tinted glass all around.

- (C)  Tool storage box located under the hood (includes movable underhood worklight with 20-ft. retractable cord and inside locking hood release).
- Slide-out spare tire carrier allows the spare to be pulled from under the frame with ease.
- Spare tire carrier side-mounted inside Styleside box. (Standard F-100/150 with dual fuel tanks.)
- Center console (SuperCabs with Captain's Chairs).

#### Seats (SuperCabs):

- Captain's Chairs (reclining).
- Forward facing rear seat (folds down to form flat floor).
- Center facing rear seats (fold up against rubber pads at side walls, includes retainer straps).

Seat trim:

- Heavy-duty black vinyl (N.A. with Ranger XLT, Lariat or SuperCab).
- Knitted vinyl (N.A. Lariat)
- All-vinyl (for Ranger XLT and Lariat).
- Cloth and vinyl inserts (for Ranger).
- Folding seat back (for Customs).

#### Performance

- Auxiliary fuel tank (see dual tanks in specification chart on page 17).
- Handling Package includes front and rear stabilizer bars, HD front and rear shock absorbers and HD front springs.
- Heavy-duty shocks, front and rear.



**REPLACEMENT PARTS**  
Be sure to specify genuine Ford-approved Motorcraft parts from your Ford Dealer.

**TESTED TOUGH**

#### EXTENDED SERVICE PLAN

Ford Motor Company's optional Extended Service Plan covers certain selected components on new Ford Pickups for longer than the vehicle's basic warranty. The cost is so moderate for the protection you get, that it could pay for itself the first time you need it. Ask your Ford Dealer for more information about the plan.

# Tough New Ford Chassis-Cabs

Ford Chassis-Cabs lead the way into the 80's. They're the tough new way to handle custom bodies. All feature Ford's new aerodynamic cab with roomy interior, and Twin-I-Beam front suspension for toughness and ride qualities. And for '80, F-350's with standard 4-speed manual transmission can easily accommodate a single-gear PTO package. No expensive exhaust or frame modifications are normally required. These Chassis-Cabs are available with 3475mm (136.8 in.) and 4085 mm (160.8 in.) wheelbases for up to 12-ft. bodies.

Ford Chassis-Cabs are also available on 3378mm (133 in.) models.

**Buy or lease a tough Ford Truck—a great choice either way!**



Specifications, descriptions and illustrative material contained herein were as accurate as known at the time this publication was approved for printing. Ford Division reserves the right to discontinue models or options at any time or change specifications, equipment or design without notice and without incurring obligation. All options and accessories illustrated or referred to as optional or available in this publication are at extra cost. Some options are required in combination with other options. For the price of the model with the equipment you desire or verification of specifications contained herein, see your Ford Dealer.



## FORD PICKUPS

FORD DIVISION

