

# CONTINENTAL



LINCOLN

ROYAL WHEEL



Presenting the trimmest Continental ever fashioned. Yet one of the finest riding Continentals ever built.

The new Continental for 1982. New in size, new in style, new in spirit, new in splendor. The most elegant Continental ever fashioned.

But for all its contemporary character, Continental draws upon rich traditions of the past, as in its formal rear-deck treatment. At the same time, advanced technology has been utilized to fashion Continental's sleek, sophisticated shape. In Continental, the classic and the contemporary are harmonized in one superbly styled automobile.

The same thoughtfulness has been carried through in Continental's interior design. Here, you'll discover exquisitely fashioned interiors and Continental's handsome Electronic Instrument Panel — a complete driver's information system at the touch of your fingertip.

On the road, you'll experience an impressively quiet, smooth ride, together with driving ease and precise steering.

Continental offers as standard equipment a 5.0 Liter V-8 engine teamed with the innovative Automatic Overdrive Transmission.

The new Continental is offered in three distinct choices: the expressive Givenchy Designer Series; the highly personal Signature Series; and the luxurious Continental.

Here, then, out of the rich heritage of its past comes an automobile of rare breeding and beauty.

Some of the equipment shown may be available only at extra cost, and only on specific models. Please see pages 14 through 17 for specific information regarding standard and optional equipment.





Givenchy

**The Continental Givenchy Designer Series. C'est magnifique!**

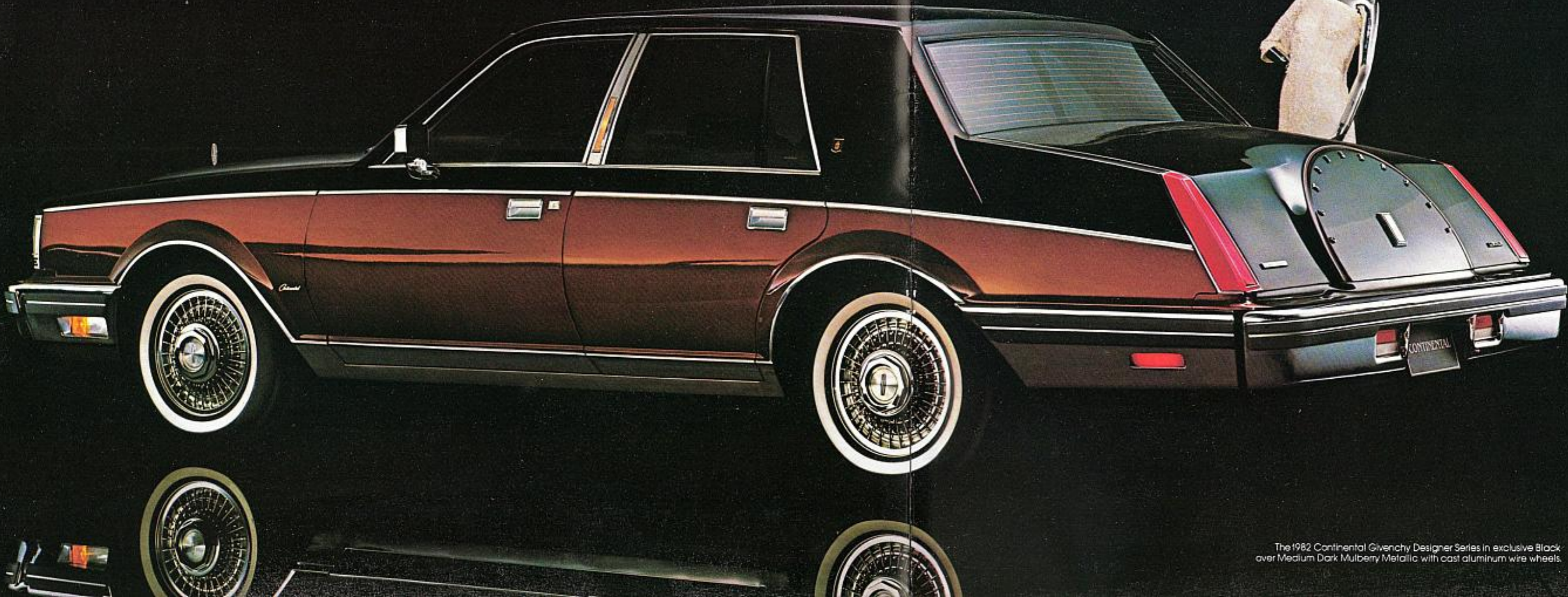
The formality of Continental. The finesse of Givenchy. Together . . . creating impeccable elegance.

Givenchy selects a Dual-Shade combination that's exclusive to this car alone. Dramatic Black over brilliant Medium Dark Mulberry Metallic. A bold masterstroke. Gracing Continental's sleek, sophisticated silhouette.

The rear quarter window bears the proud Givenchy name. And mounted on the rear quarter pillar is the proud Givenchy emblem.

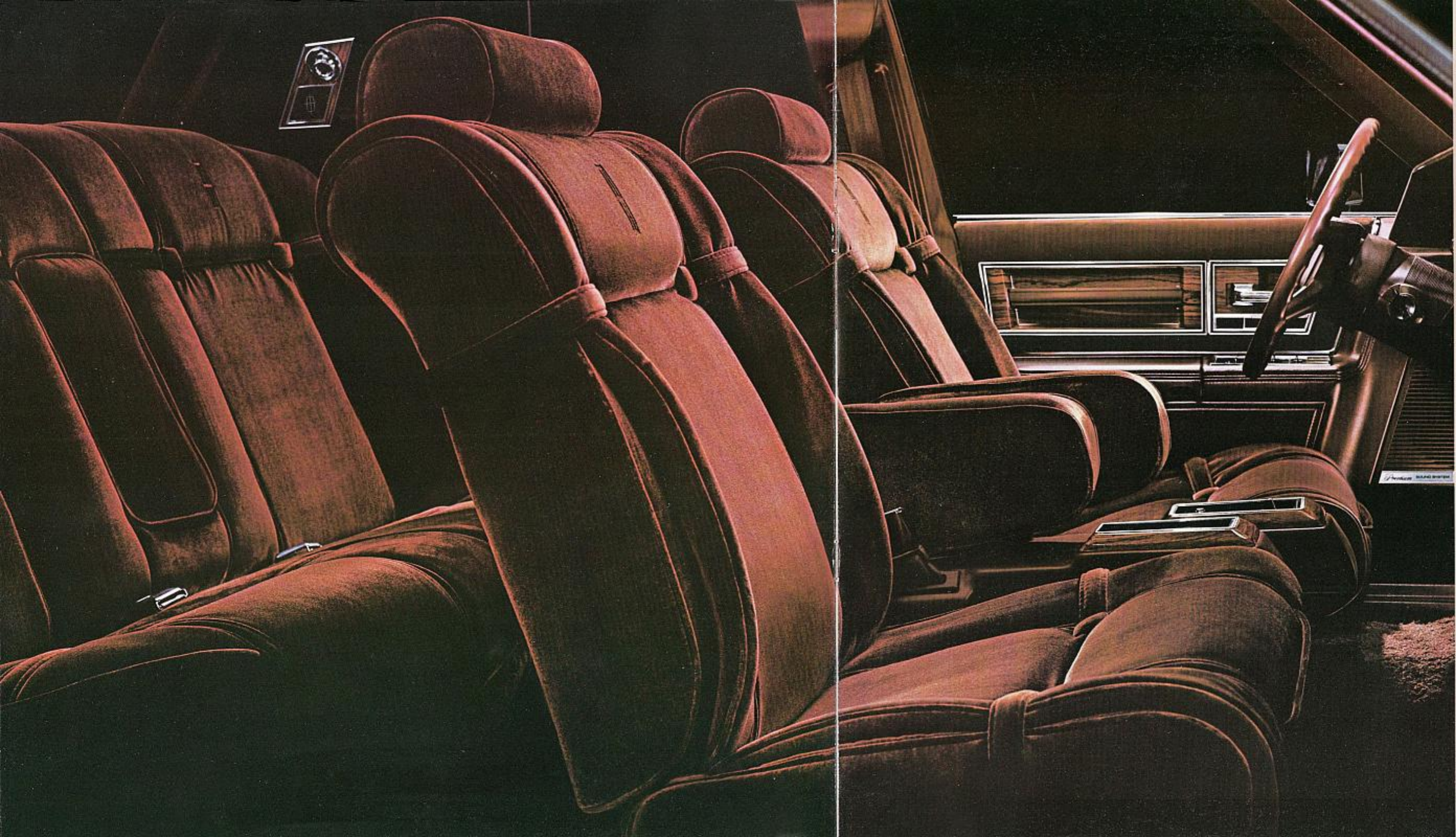
To complete his magnificent theme, Givenchy selects cast aluminum wire wheels.

The Continental Givenchy Designer Series for 1982. Destined to draw rave reviews.



The 1982 Continental Givenchy Designer Series in exclusive Black over Medium Dark Mulberry Metallic with cast aluminum wire wheels.





**The Continental Givenchy Designer Series. Tres chic!**

The Givenchy interior. Rich in Continental luxury. And now refined by Givenchy's elegant touches.

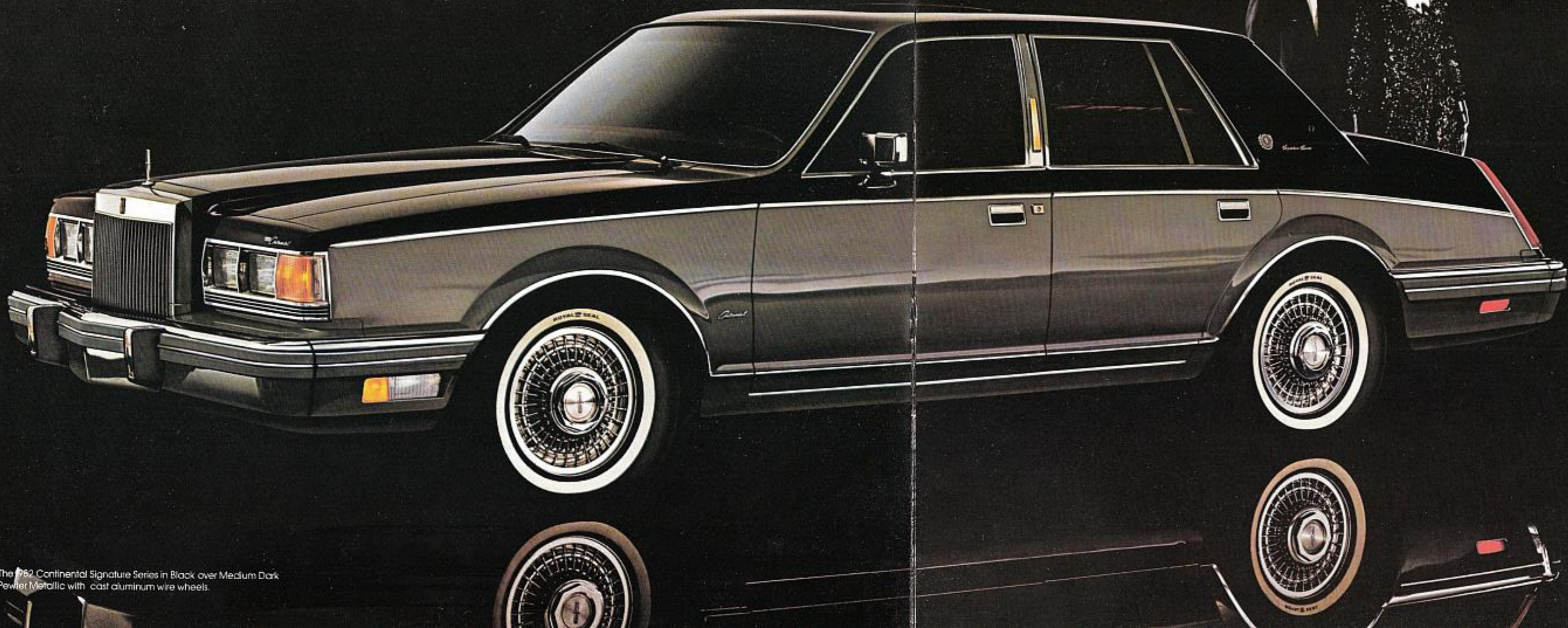
Givenchy colors his interior with exquisite Mulberry. The Twin Comfort Lounge seats are shown here trimmed in lush Radcliffe cloth. Or if you prefer, select supple, soft leather seating surfaces.

Enjoy plush Allure carpeting that extends all the way up to the lower door area, the luxurious leather-wrapped tilt-steering wheel, the full-length armrests with soft-lined stowage bins, front cushion-mounted "kangaroo pouch" map pockets, and the Electronic Instrument Panel, where you'll discover Givenchy's signature, plaque mounted, proudly displayed.

The Continental Givenchy Designer Series for 1982. Indulge your sense of style. And taste.



SIGNATURE



**The Continental Signature Series.  
Personalized elegance.**

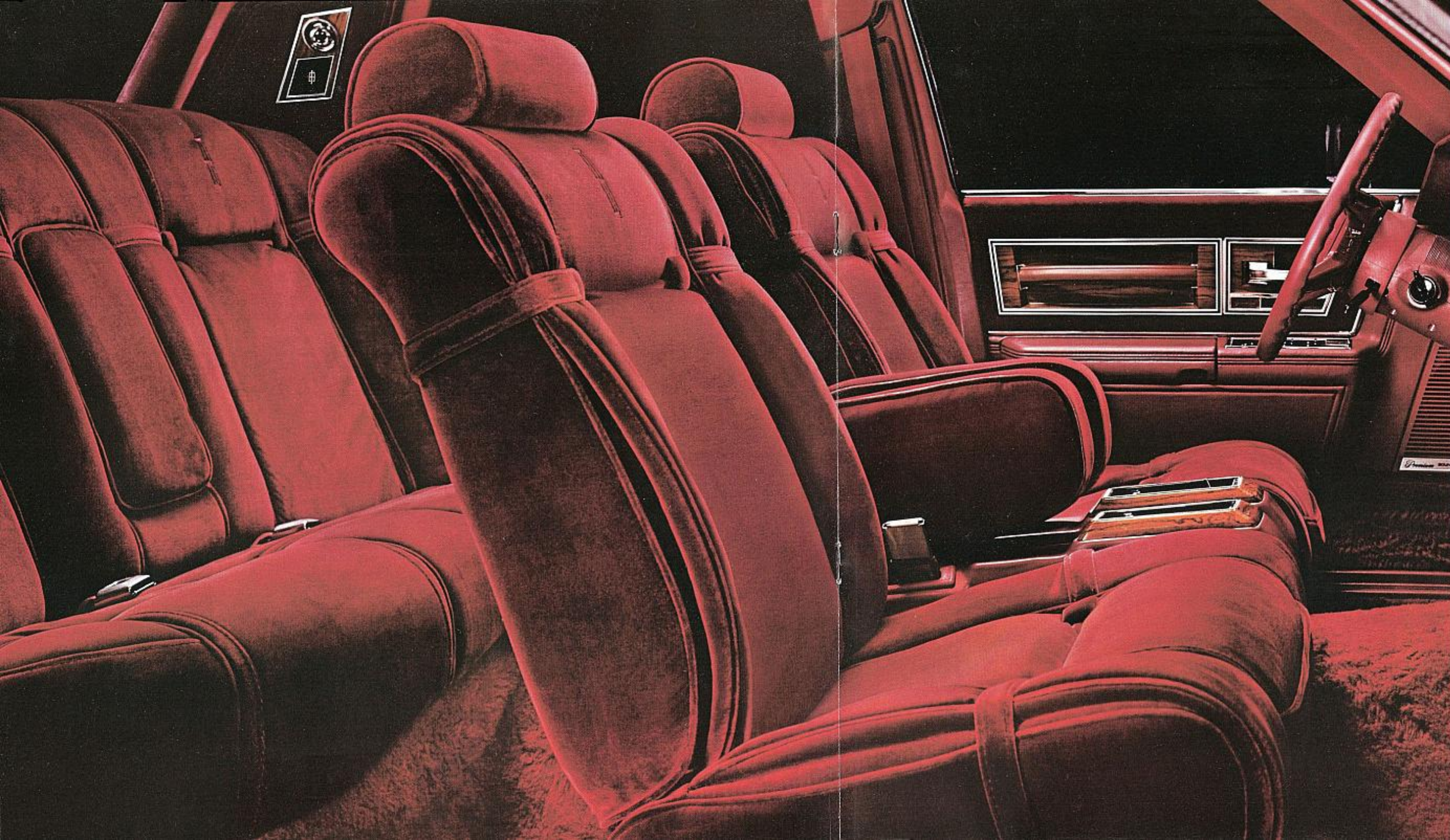
Here is your statement of individualized luxury. Beginning with front-door plaques handsomely bearing your initials.

Signature is an automobile that commands recognition with its classic coach lamps; the prestigious Signature Script on the rear-quarter pillar; and the three uniquely Signature Dual-Shade color combinations: radiant Dark Red Metallic over Light Pewter Metallic, brilliant Dark Blue Metallic over Light Blue Metallic, or shown here, magnificent Black over Medium Dark Pewter Metallic.

The Continental Signature Series for 1982. Elegance that proudly bears your initials.

The 1982 Continental Signature Series in Black over Medium Dark Pewter Metallic with cast aluminum wire wheels.





**The Continental Signature Series.  
Signed and Initialed by you.**

Your signature mounted on the instrument panel tells you immediately that Signature is a special automobile. Highly personalized and luxurious.

Relax in the richness of Twin Comfort Lounge seats. Shown here, beautifully trimmed in rich Red Radcliffe cloth.

Enjoy all the elegant touches throughout. Such as velvety Allure carpeting, soft-lined door storage bins, handy "kangaroo pouch" map pockets, carpeted package tray, and leather-wrapped luxury tilt-steering wheel.

Appreciate a complete range of courtesy lights, standard on every new Continental: a pivoting light for the back seat, dual-beam map lights, and illuminated ash trays.

Here is superbly individualized styling. The Continental Signature Series for 1982.



The Continental. Combining classic and contemporary styling.

Begin with the distinct, formal design. Blended with contemporary styling. Perfectly balanced.

Appreciate the exquisitely appointed interior, featuring seatback map pockets, full-length armrests with stowage bins, and Twin Comfort Lounge seats. The seats are beautifully trimmed in elegant Velsen and Radcliffe cloth. Or select luxurious optional leather seating surfaces. Shown here, in Medium Fawn. They recline, have dual fold-down armrests, and six-way power for the driver's and passenger's seat.

Discover deep, plush carpeting on the floor and on the doors.

Enjoy the full array of courtesy lights. The complete convenience of power assists.

The handsome Electronic Instrument Panel with Message Center.

The standard 5.0 Liter V-8 engine teamed with the innovative Automatic Overdrive Transmission.

The standard forged aluminum wheels. The self-sealing tires. The smooth, quiet ride. The precise steering. The controlled hydroboost power braking.

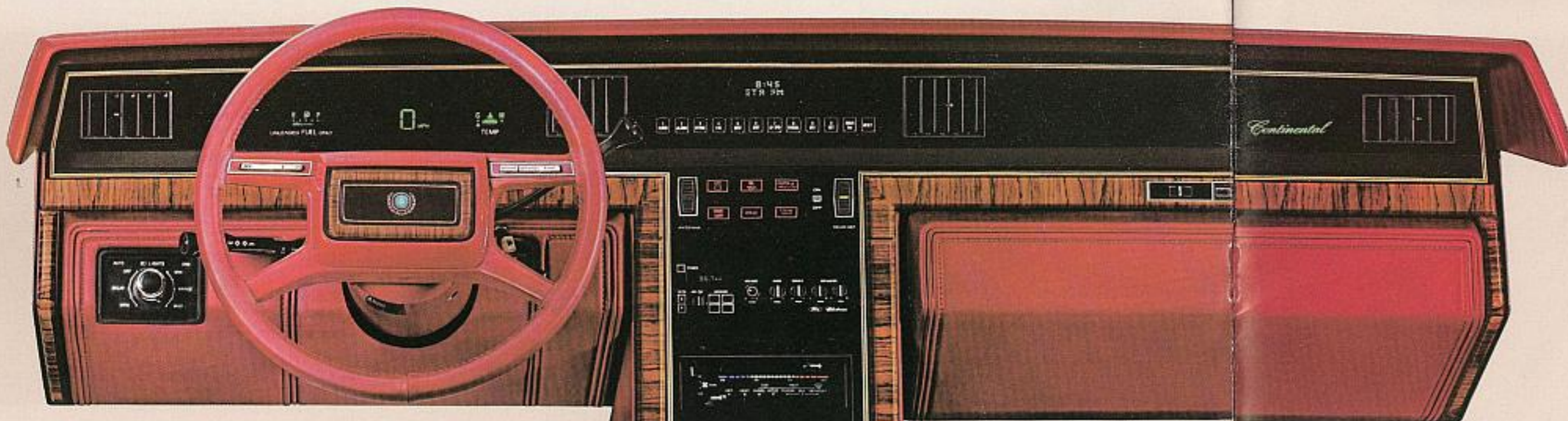
They're all here. Creating the new Continental for 1982. Classic styling with contemporary spirit and splendor.

CONTINENTAL



The 1982 Continental in Dark Brown Metallic with forged aluminum wheels.





### Continental Standard Features

Your 1982 Continental comes with numerous luxury features. Pictured here are a few from the extensive list that follows.

1. **ELECTRONIC INSTRUMENT PANEL.** Here is a computerized system that is both easy to read and easy to use. The electronic instrument cluster features a digital speedometer, slide-rule fuel and temperature gauges in blue-green fluorescent display on a black background.

The Message Center is a trip log information system with a 12-button keyboard which, at the touch of your fingertip, provides such information as: time, date, clock alarm, distance-to-empty with low fuel warning, elapsed time, average fuel economy for your trip, instantaneous fuel economy, distance to destination, trip odometer, estimated time of arrival, average speed, and conversion for miles to kilometers and vice-versa. (The leather-wrapped steering wheel, shown above, is standard on Givency and Signature, and optional on Continental.)

2. **TWIN COMFORT LOUNGE SEATS** are as comfortable as their name implies, and are standard on all Continentals. Each power seat reclines manually, has its own fold-down center armrest, and power adjusts six ways — forward and backward, up and down, tilt up and

tilt down. The standard seat trim is rich, elegant Velsen cloth.

3. **STALK-MOUNTED CONTROLS** simplify your driving by placing the windshield wipers, wiper fluid, horn, and high beam lights where you can conveniently reach them.

4. **SPEED CONTROL** is especially convenient for long trips. Just set the speed you wish to cruise at. This system also includes "resume" feature for automatic acceleration to the same speed set prior to braking.

5. **ELECTRONIC AM/FM STEREO SEARCH RADIO.** Continental has as standard equipment the finest and most advanced radio we've ever offered. This radio is all new, with features normally found only



in home systems or in bulky separate components. It has six Premium Sound speakers and has higher frequency and better sound reproduction than radios previously designed for Continental.

6. **ILLUMINATED ENTRY SYSTEM.** When you lift the door handle to enter the car, a ring of light appears around the keyhole. At the same time, the courtesy lights and dome light go on inside the car. A nice convenience and security feature.



7. **TILT-STEERING WHEEL** adjusts to five positions and allows easy entry and exit from the driver's seat.

### Standard Interior And Exterior Features

- o Six-way/six-way power Twin Comfort Lounge seats with manual driver and passenger recliners and dual fold-down armrests
- o Velsen cloth seating surfaces with Radcliffe cloth trim
- o Courtesy lights — front and rear floor wells, under the instrument panel, front and rear doors, rear and instrument panel ash trays, glove box
- o Cloth headlining and sunvisor coverings
- o Carpeted package tray
- o Roof rail assist handles
- o Full pivoting rear-quarter pillar reading light
- o Dome and dual-beam map lamps

- o Luggage compartment light
- o Power seat and remote mirror controls
- o Rear seat center armrest
- o Seatback robe cord
- o Seatback map pocket
- o Full-length door armrests with stowage bins for valuables
- o Door pull straps
- o 18-ounce floor carpet
- o Carpeted lower door
- o Soft instrument panel glove box door
- o Blackout instrument panel appearance with woodtone appliqué
- o Carpeted (9-ounce) luggage compartment
- o Carpeted (9-ounce) spare tire cover
- o Front and rear bumper rub strips with accent stripe
- o Forged aluminum wheels (4)
- o Bodyside accent stripes
- o Flush type door handles
- o Distinctive Continental rear decklid tire hump with Continental block lettering
- o Front and rear side marker lamps
- o Distinctive Continental grille

### Standard Functional Features

- o 5.0 Liter V-8 engine
- o 22.6-gallon fuel tank
- o Automatic Overdrive Transmission
- o Automatic Temperature Control air conditioning
- o Gas-pressurized rear shock

- o absorbers and front shock struts
- o Four-wheel power disc brakes
- o Self-sealing wide WSW steel-belted radial tires (P205/75R15)
- o Rack-and-pinion steering
- o Power door locks
- o Power antenna
- o Power windows
- o Power decklid release
- o Automatic parking brake release
- o Tinted glass
- o Defroster Group
- o Intermittent wipers
- o Locking lug nuts
- o Gas cap tether
- o Cornering lamps
- o Halogen headlamps
- o Left-hand and right-hand power heated mirrors with left-hand thermometer — right-hand convex mirror
- o Headlamp Convenience Group — includes automatic headlamp dimmer and "Auto lamp" on/off delay system, also flash-to-pass
- o Right-hand visor vanity mirror
- o Premium Sound System
- o Parking lamps
- o Warning chimes

### Signature Series Standard Equipment

(Includes all Continental standard equipment, plus these additions and/or differences.)

- o A unique Dual-Shade exterior color all its own: Black over Medium Dark Mulberry Metallic
- o Tailored interior in rich Mulberry Radcliffe cloth or Mulberry leather seating surfaces
- o Special Givency rear-quarter window identification
- o Special Givency ornament on the rear-quarter pillar
- o Special Givency identification plaque mounted on the instrument panel

to be mounted on the instrument panel

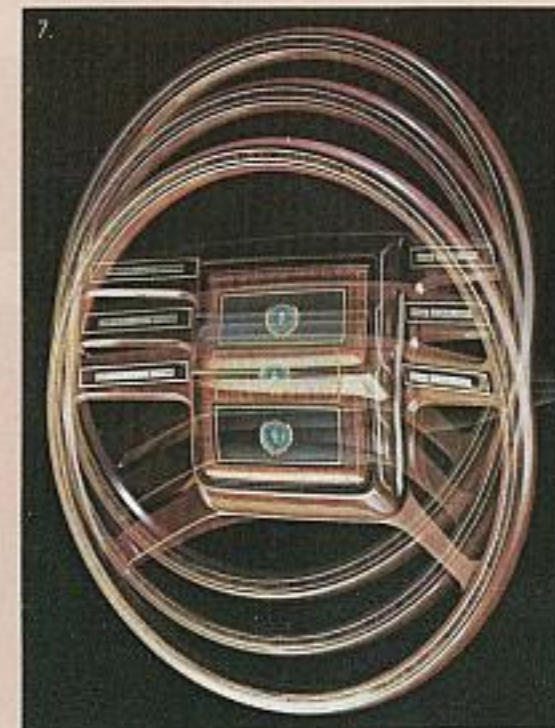
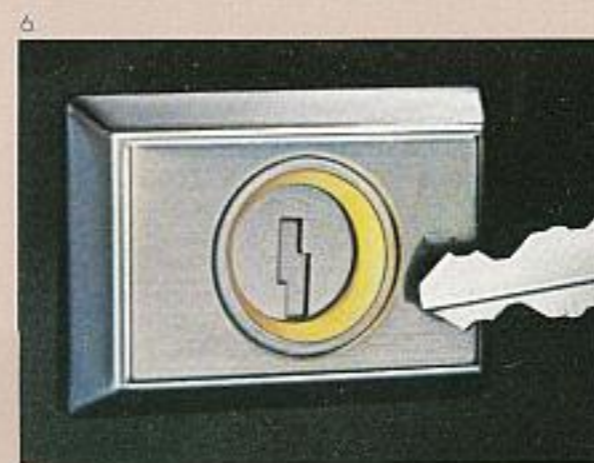
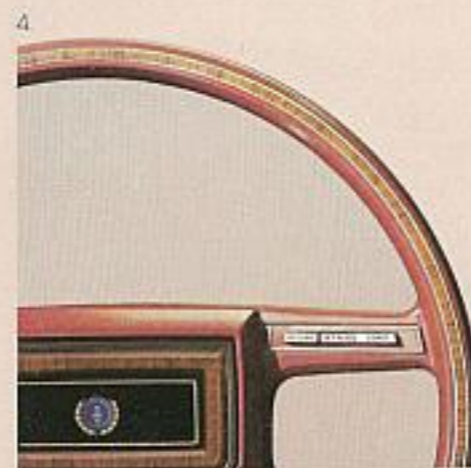
- o Leather-wrapped tilt-steering wheel
- o Cast aluminum wire wheels
- o Deep-pile Allure carpeting — for interior and luggage compartment — carpeted lower door and carpeted package tray
- o Front and rear floor mats with Allure inserts
- o Door stowage bins hidden in the armrests, lined with soft, flocked material, for your valuables
- o "Kangaroo pouch" map pocket — positioned on the lower front seat cushions
- o Cloth inserts on doors
- o Coach lamps
- o Portable trouble light mounted in trunk, with red and yellow flashing mode, fluorescent mode and spot mode
- o Brushed, bright bodyside molding

- o "Kangaroo pouch" map pocket — positioned on the lower front seat cushions
- o Cloth inserts on doors
- o Front and rear floor mats with Allure inserts
- o Coach lamps
- o Portable trouble light mounted in trunk, with red and yellow flashing mode, fluorescent mode and spot mode
- o Brushed, bright bodyside molding
- o A choice of three distinct Signature Dual-Shade combinations:
  - Dark Red Metallic over Light Pewter Metallic
  - Black over Medium Dark Pewter Metallic
  - Dark Blue Metallic over Light Blue Metallic

### Givency Designer Series Standard Equipment

(Includes all Continental standard equipment, plus these additions and/or differences.)

- o A unique Dual-Shade exterior color all its own: Black over Medium Dark Mulberry Metallic
- o Tailored interior in rich Mulberry Radcliffe cloth or Mulberry leather seating surfaces
- o Special Givency rear-quarter window identification
- o Special Givency ornament on the rear-quarter pillar
- o Special Givency identification plaque mounted on the instrument panel





# O P T I O N A L

## Continental Options

Even though your 1982 Continental comes with a generous offering of standard features, you may decide to personalize it further. Pictured on these two pages are some of the many options available to you, followed by a more complete listing of other Continental options.

### 1. GARAGE DOOR OPENER.

It includes a visor-mounted transmitter on the driver's side and separate receivers that are wired directly to an existing automatic door opener system. (Requires the dual illuminated visor vanity mirror option.)

### 2. POWER GLASS MOONROOF.

It is power-operated, slides backward at the press of a button to bring in that open-air feeling of the open road.

### 3. WHEEL CHOICES.

Continental offers forged aluminum wheels as standard equipment, shown below right. Or you may select the option of cast aluminum wire wheels, shown below left. Standard on Signature and Givenchy Designer. Either wheel selection is clear-coated for extra protection to maintain a lustrous, luxurious appearance.

4. KEYLESS ENTRY SYSTEM. This allows you to open the driver's and front passenger's door and the decklid by means of buttons just above the driver's door handle. It includes an automatic door-locking feature and exterior locking capability.

### 5. ILLUMINATED VISOR VANITY MIRRORS.

These are a nice touch with right- and left-hand dual illuminated vanity mirrors mounted in the sunvisors. (Required with garage door opener and power moonroof.)

### 6. RADIO — ELECTRONIC AM/FM STEREO SEARCH WITH CASSETTE TAPE PLAYER.

The cassette features Dolby® noise reduction, automatic tape reverse, and metal tape equalization. (For more information on Continental's all-new radio, see page 14.)

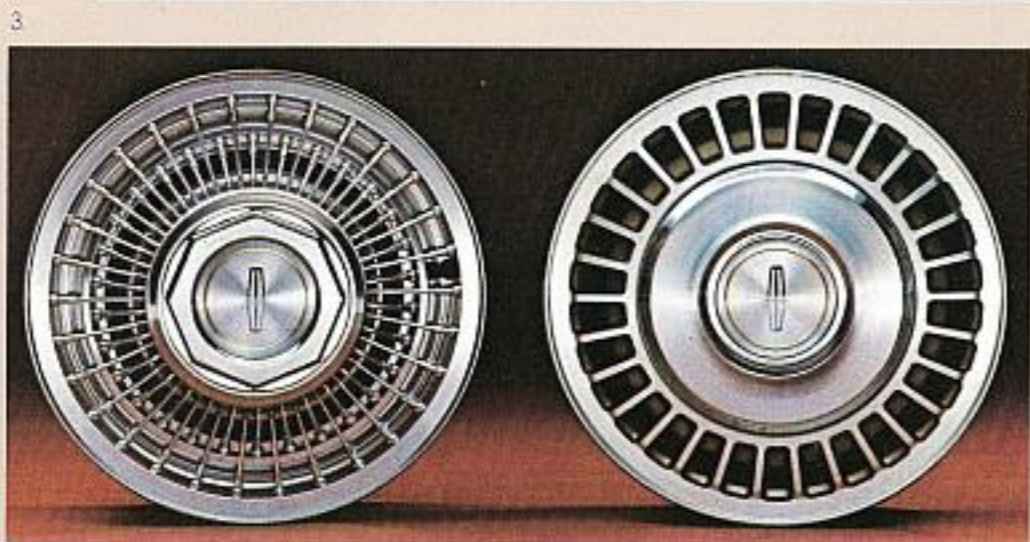
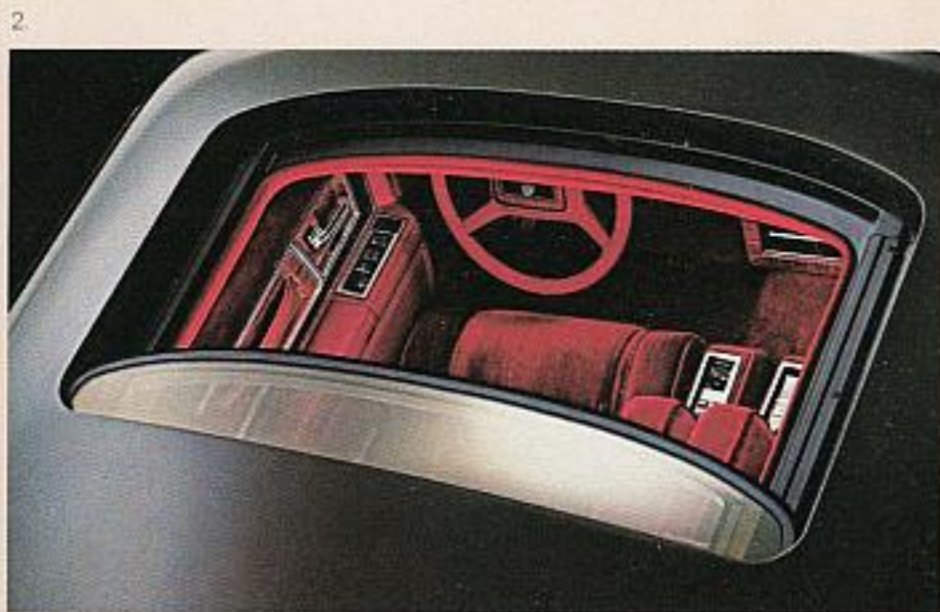
### 7. RADIO — ELECTRONIC AM/FM STEREO SEARCH WITH 8-TRACK TAPE PLAYER.

Other important Continental optional features:

- o Coach lamps. An elegant addition to Continental's center pillar. Standard with Givenchy and Signature.
- o Color-keyed bodyside protection molding. Both practical and good looking. Provides added protection from

nicks, scrapes, and "dings."

- o Moon dust paint. Little metallic flecks in the paint provide a shimmering, European appearance.
- o Dual-Shade paint. Includes brushed/bright bodyside molding. Not available with Givenchy. Limited to three combinations with Signature.



# F E A T U R E S

- o Appearance protection group. Includes door edge guards and license plate frame.
- o Custom monogram set. A handsome touch. Includes two monograms of your initials, one for each of the front doors.
- o Floor mats, front and rear. Not available with Givenchy or Signature.

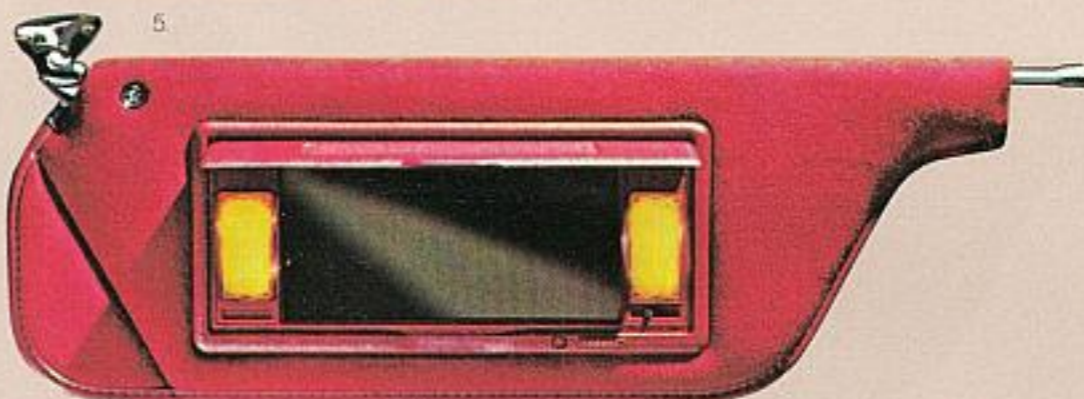
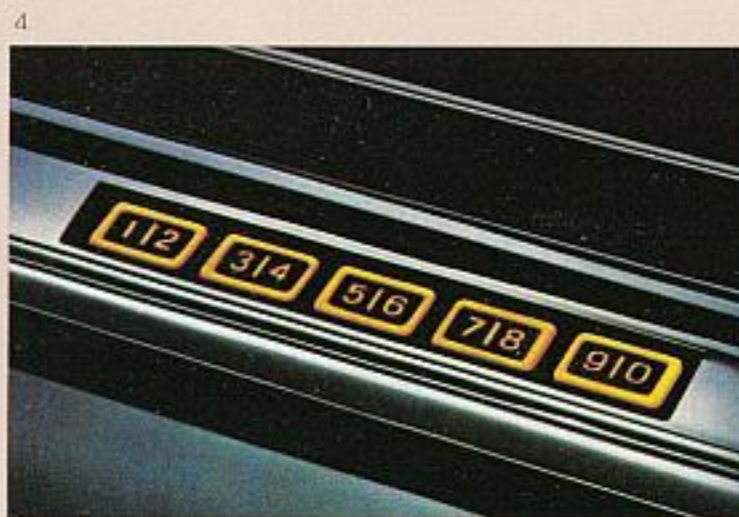
- o 3.8 Liter V-6 engine. Comes with standard 22.6-gallon fuel tank.
- o Traction-Lok differential axle. Particularly advantageous for sandy, muddy and snowy terrains.
- o Front license plate bracket. Automatically installed for all states where front license plates are required. Optional in all other states.

- o Leather-wrapped steering wheel. A luxurious inclusion. Standard with Givenchy and Signature.
- o Leather trim. A distinctly elegant touch.

Dolby® is a registered trademark of Dolby Laboratories, Inc.

## Continental Specifications

EXTERIOR	
Wheelbase	108.6"
Overall Length	201.2"
Overall Width	73.6"
Tread	
— Front	58.4"
— Rear	59.0"
Turning Diameter	42.6'
Overall Height	54.9"
Curb Weight (Lbs.)	3,525
INTERIOR	
Front Compartment	
Headroom	38.5"
Legroom (Maximum)	42.8"
Shoulder Room	57.9"
Hiproom	52.5"
Rear Compartment	
Headroom	37.7"
Legroom (Maximum)	37.2"
Shoulder Room	57.9"
Hiproom	52.1"
Luggage Capacity (Cubic Feet)	14.7
Fuel Tank Capacity (Gals.)	22.6





# C O L O R C H O I C E S

# E N G I N E E R I N G • F A C T S A N D • F U R T H E R • C O N S I D E R A T I O N S

## Exterior Colors

Continental offers you a generous selection of standard colors and seven optional colors shown below; in addition, there are seven brilliant Dual-Shade combinations.

Six of the standard and all of the optional colors are Clearcoat paint — a finish that provides a deep, brilliant lustre. All of the optional "Moon dust" colors are Clearcoat paint.

## Accent Stripes

Accent stripes are offered in the following twelve colors and are

coordinated with exterior paint colors: White, Dark Pewter, Medium Red, Medium Blue, Light Beryl, Gold, Pastel Sand, Light Cordovan, Dark Cordovan, Light Champagne, Dark Champagne, and Dark Gold.

## Interior Trim Colors

Continental's Twin Comfort Lounge seats are offered in luxury cloth or leather seating surfaces. Colors for the luxury cloth are: Midnight Blue, Pewter, Mulberry, Dark Red, Teal, and Medium Fawn on the Continental. For the Signature: Midnight Blue and Dark Red. For the

Givenchy Designer: Mulberry only.

In leather, the colors are: Midnight Blue, Opal, Pewter, Mulberry, French Vanilla, Dark Red, Teal, and Medium Fawn, in the Continental. In the Signature: Midnight Blue and Dark Red. And Mulberry only in the Givenchy Designer.

## Leasing

There may be considerable advantages in leasing a new Continental, depending on your needs. Leasing lets you drive the new

model of your choice, while paying a fixed monthly rate. If you use your Continental in business, your tax records may be simplified. Further, with an optional coupon book, you get a comprehensive range of maintenance services at any Lincoln-Mercury dealership. This helps you predetermine your monthly automobile expenses.

There are other conveniences provided by your Lincoln-Mercury Dealer Leasing Association (LMDLA) member, such as handling tire replacement, licensing, taxes, and insurance.

## Continental Color Choices

### Standard Exterior Colors



Black



White



Medium Dark Pewter Metallic\*



Dark Blue Metallic\*



Dark Teal Metallic\*



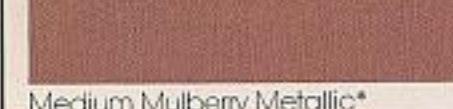
Pastel French Vanilla



Dark Brown Metallic\*



Medium Dark Mulberry Metallic\*

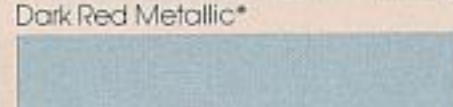


Medium Mulberry Metallic\*

## Optional Exterior Moon dust Colors



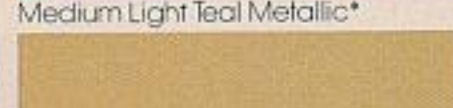
Dark Red Metallic\*



Light Blue Metallic\*



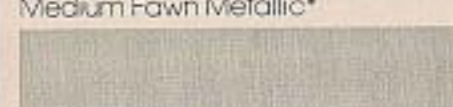
Medium Light Teal Metallic\*



French Vanilla Metallic\*



Medium Fawn Metallic\*



Light Fawn Metallic\*



Light Pewter Metallic\*

## Optional Dual-Shade Combinations

For the Continental: Dark Teal Metallic over Medium Light Teal Metallic, French Vanilla Metallic over Pastel French Vanilla, and Medium Dark Mulberry Metallic over Medium Mulberry Metallic.

For the Signature only, the standard Dual-Shades are: Dark Red Metallic over Light Pewter Metallic, Black over Medium Dark Pewter Metallic, and Dark Blue Metallic over Light Blue Metallic.

For the Givenchy Designer only, the standard Dual-Shade is: Black over Medium Dark Mulberry Metallic.

(Note: Due to occasional printing irregularities, the colors shown may vary from actual hues. Please consult your Lincoln-Mercury Dealer for accurate color chips).

\*Denotes Clearcoat color, a finish that provides a brilliant deep surface because the pigment lies beneath a clear, protective baked enamel coating.

## THE LINCOLN COMMITMENT

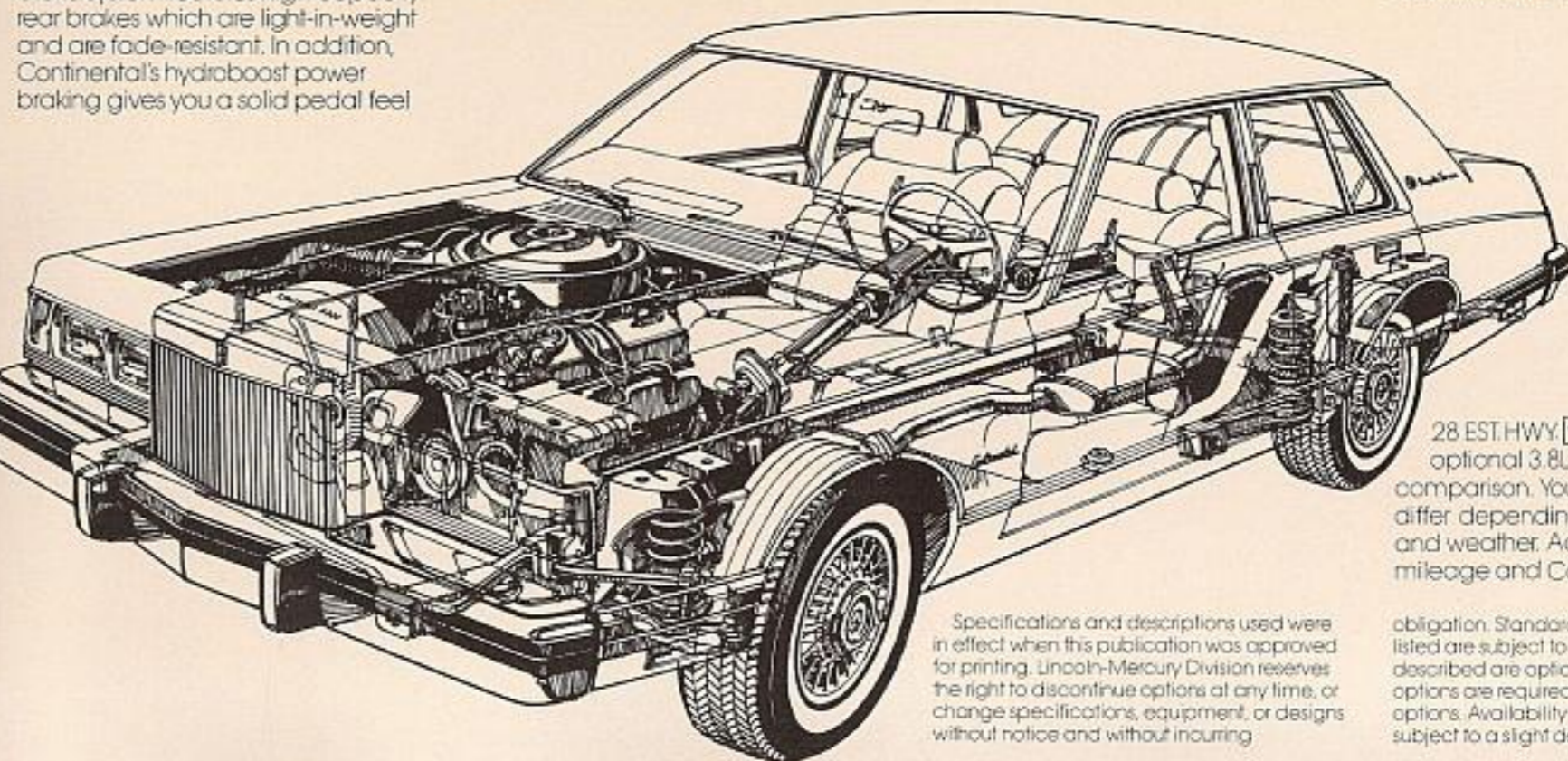
The Lincoln-Mercury Division announces extended service coverage on the 1982 Continental as part of a comprehensive, new program committed to making your ownership of a new Continental a totally satisfying experience.

Now your 1982 Continental comes with the regular limited warranty which provides coverage through 12 months/12,000 miles, whichever comes first, plus extended service coverage for an additional 24 months/24,000 miles, whichever comes first.

This supplemental coverage includes specified repairs on engine, transmission, drive shaft and axles, steering, front suspension, brakes, air conditioning, and electrical components.

During this period from 12 months/12,000 miles to 36 months/36,000 miles, you pay just \$50 per repair visit at your selling dealership. Coverage also includes reimbursements for towing and vehicle rental assistance when your Continental must be kept overnight.

\*Warranty does not cover recommended maintenance services on normal wear parts. See your Dealer regarding the specific coverage provided and other important details.



28 EST. HWY. \*EPA EST. MPG. With optional 3.8L engine. Estimate for comparison. Your mileage may differ depending on speed, distance and weather. Actual highway mileage and California ratings lower.

Specifications and descriptions used were in effect when this publication was approved for printing. Lincoln-Mercury Division reserves the right to discontinue options at any time, or change specifications, equipment, or designs without notice and without incurring

obligation. Standard and optional equipment listed are subject to change. Some features described are optional at extra cost. Some options are required in combination with other options. Availability of some features may be subject to a slight delay.

## Continental Engineering

Continental's suspension is designed to provide a smooth, quiet ride. To achieve this, Continental combines a modified MacPherson strut front configuration and a four-bar coil spring rear suspension system. These two elements, in conjunction with precision power-assisted rack-and-pinion steering, provide precise steering and an impressively quiet, comfortable ride.

## Continental's Engine

Continental offers as standard equipment a 5.0 Liter V-8 engine. A 3.8 Liter V-6 engine is offered as an option. The standard fuel tank for both engines has a 22.6 gallon capacity.

## Continental's Transmission

Continental offers an innovative Automatic Overdrive Transmission. It incorporates a fourth forward gear which, when your Continental reaches cruising speed, automatically shifts into overdrive to increase your fuel efficiency.\*

## Continental's Four-Wheel Power Disc Brake System.

Continental's four-wheel power disc brake system features high-capacity rear brakes which are light-in-weight and are fade-resistant. In addition, Continental's hydroboost power braking gives you a solid pedal feel

and short pedal stroke, with low pedal effort.

## Continental's Tires

Continental's steel-belted radial tires are puncture sealant and self-sealing tires. These tires feature advanced rubber compounding for lower rolling resistance to help improve fuel economy. Select either Continental's standard forged aluminum or optional cast aluminum wire wheels.

## Corrosion Perforation Warranty

Ford Motor Company offers a limited three-year corrosion perforation warranty excluding exhaust system components on all new 1982 Lincoln-Mercury automobiles. And at no cost to you.

The warranty states that any sheet metal part which, in normal use, develops perforation from corrosion within three years of retail delivery or first use will be repaired or replaced free of charge by the selling Dealer after inspection by a Ford representative. Exhaust system components or parts which develop corrosion perforation caused by accidents or other damage are not covered.

This warranty valid only in the 50 United States.

## Ford-Paid Repair Programs After The Warranty Period.

Sometimes Ford Motor Company offers adjustment programs to pay all or part of the cost of certain repairs. These programs are intended to assist owners and are in addition to the warranty or to required recalls. Ask Ford Motor Company or your Lincoln-Mercury Dealer about such programs relating to your Ford or Lincoln-Mercury vehicle.

To get copies of any adjustment program for your vehicle or the vehicle of interest to you:

Call Ford toll-free at 1-800-241-3673. Alaska and Hawaii, call 1-800-243-3711. In Georgia, call 1-800-282-0959 or write Ford at Ford Customer Information System Post Office Box 95427 Atlanta, GA 30347

We'll need your name and address; year, make, model, and vehicle identification number, as well as engine size; and whether you have a manual or automatic transmission.

## Technical Service Bulletins

All vehicles need repairs during their lifetime. Sometimes Ford issues Technical Service Bulletins (TSBs) and easy-to-read explanations describing unusual engine or transmission conditions which may lead to costly repairs, the recommended repairs, and new repair procedures. Often a repair now can prevent a more serious repair later. Ask Ford Motor Company or your Lincoln-Mercury Dealer for any such TSBs and explanations relating to your Ford or Lincoln-Mercury vehicle.

To get copies of these Technical Service Bulletins and explanations for your vehicle or the vehicle of interest to you:

Call Ford toll-free at 1-800-241-3673. Alaska and Hawaii, call 1-800-243-3711. In Georgia, call 1-800-282-0959 or write Ford at Ford Customer Information System Post Office Box 95427 Atlanta, GA 30347

We'll need your name and address; year, make, model, and vehicle identification number, as well as engine size; and whether you have a manual or automatic transmission.





CONTINENTAL

LINCOLN-MERCURY DIVISION 

Litho in U.S.A. (210M) 10-81 Form No. P-8110 Rev.