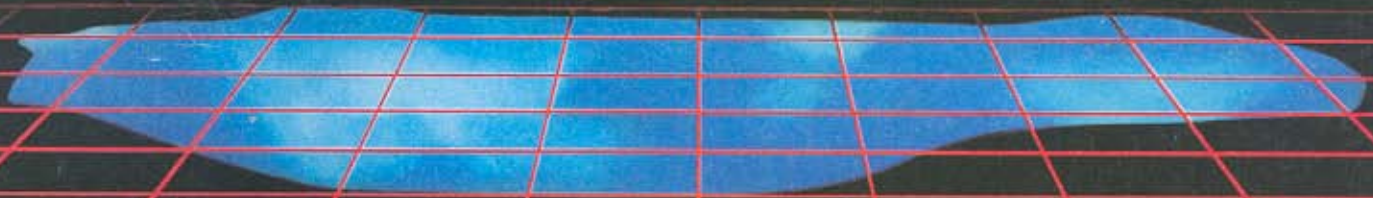
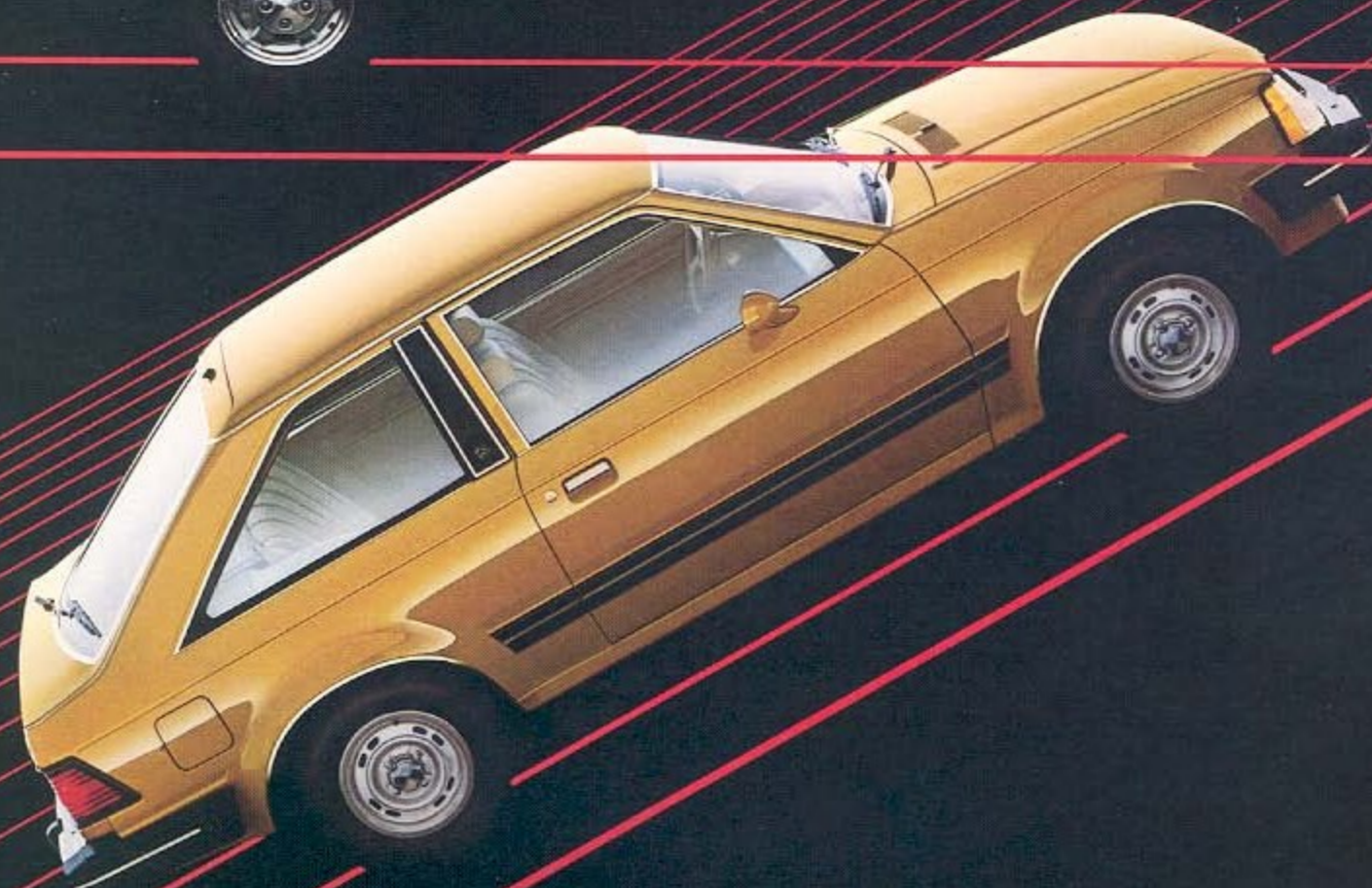
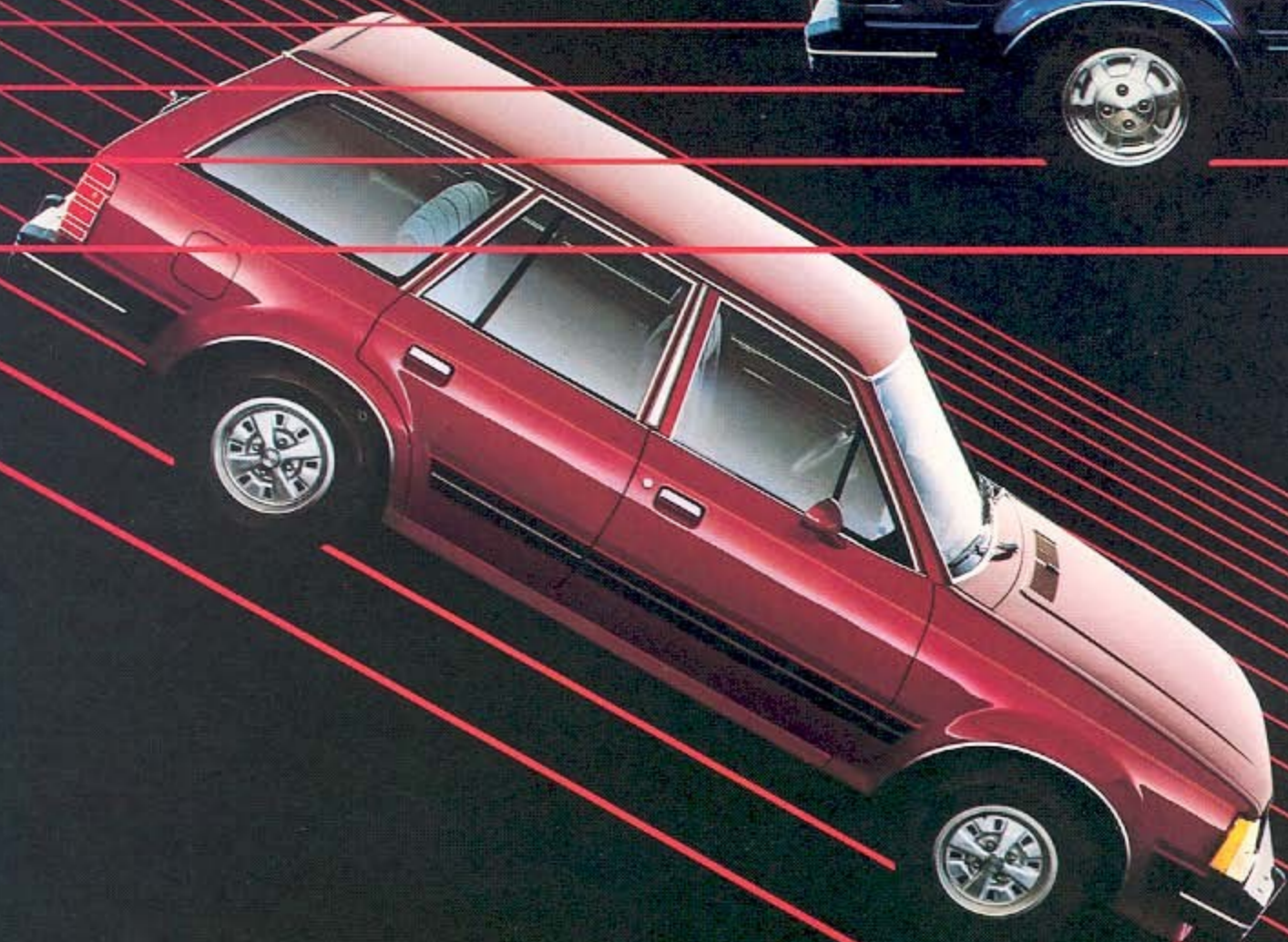


# MERCURY LYNX '83





# CONQUEST OF INNER SPACE

The assignment was this: design a stylish series of cars small enough to be extremely agile and fuel-efficient\* for today's driving needs, yet spacious enough to seat four adults in comfort. Most importantly, these cars had to be of high quality.

Ford Motor Company engineers from all over the world went to work. They chose a transverse front engine/front-wheel drive configuration for space

efficiency and traction. They developed a unique 1.6 liter Compound Valve Hemispherical overhead cam four-cylinder engine. They incorporated a four-wheel fully independent suspension system for good road-holding and ride.

A split-diagonal front disc/rear drum braking system was engineered for sure stopping power. Rack-and-pinion steering was selected for its proven precision.

Around this impressive array of high-tech hardware was wrapped an aerodynamically refined, computer-designed bodyshell that enclosed a maximum of interior space as it sliced through the air with a minimum of effort.

Thus was born a state-of-the-art world car that Lincoln-Mercury fine tuned to create a star vehicle of its own called Lynx. A new breed of cat offering exceptional comfort, convenience... even

luxury in three distinctive body styles: three-door and five-door hatchbacks plus a four-door wagon. Carefully built cars assembled in modern plants employing lasers, robots—and most importantly—skilled and dedicated workers who take great pride in the part they play in the conquest of inner space. Join us now in an exploration of that universe which is uniquely Lynx for 1983.

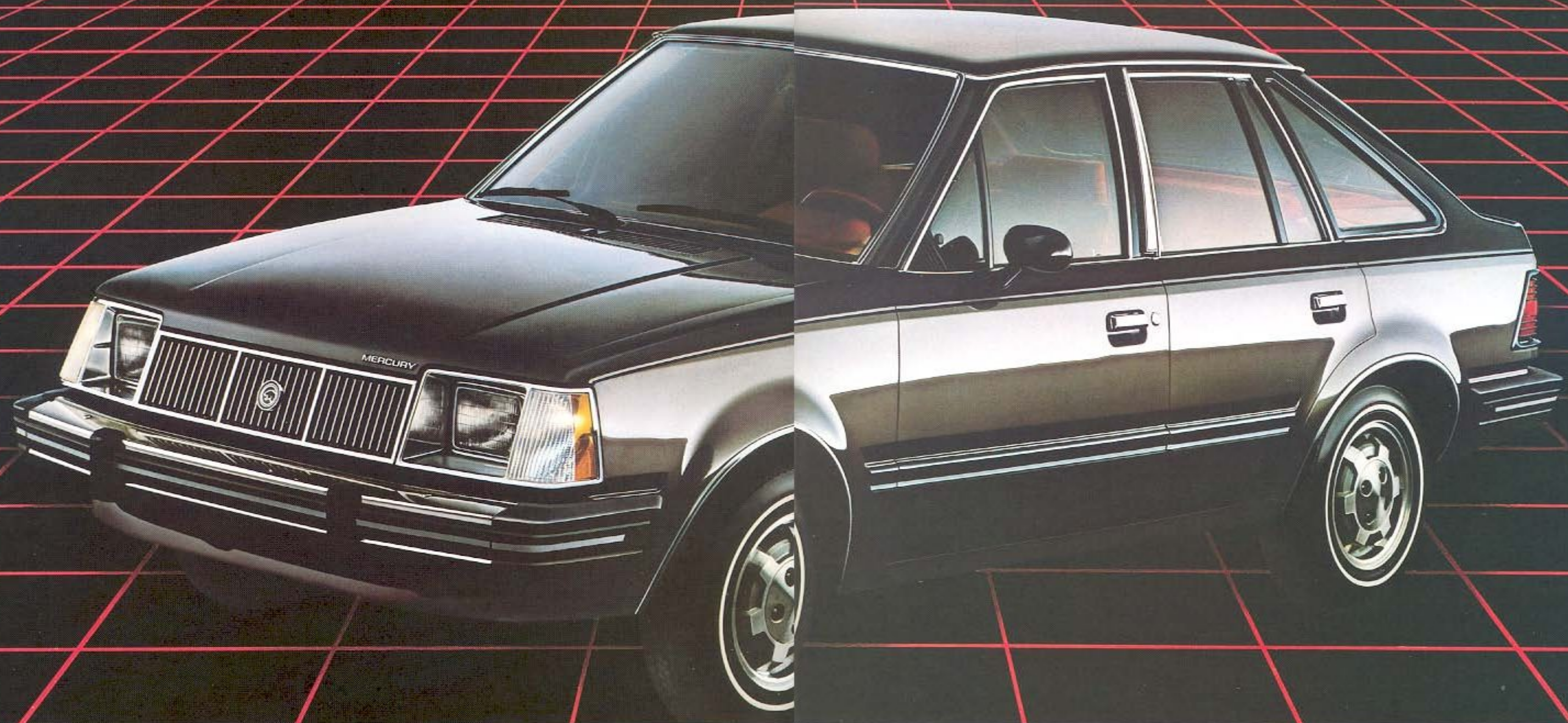
*\*EPA estimates were not available at the time this catalog was published. Mercury Lynx, however, should post excellent mileage figures in the new EPA Gas Mileage Guide. See your Lincoln-Mercury Dealer for the latest information.*

*Some of the equipment shown may be available only at extra cost and only on specific models. Please see pages 16 to 19 for specific information regarding standard and optional equipment.*

*Top: Mercury Lynx GS five-door in Dark Cadet Blue Metallic with optional cast aluminum spoke wheels.*

*Left: Mercury Lynx GS wagon in Medium Red Metallic with optional styled steel wheels (subject to late availability).*

*Right: Mercury Lynx GS three-door in Desert Tan, with standard semi-styled steel wheels.*



## FOURSOME PLUS SOME

Here's *the* family car for the family that likes to travel together. The Mercury Lynx five-door. It offers first-class accommodations for four . . . even if all four are adults. There's a door for each passenger, plus a rear hatchback-design door for cargo like the family groceries, the family luggage or even the family pet.

Sounds like a pretty big car, right? Well, only on the inside. Thanks to the

space efficiencies of front-wheel drive and a transversely mounted engine, the '83 Lynx five-door is less than fourteen feet long. Which means you'll pass up fewer parking spaces and have an easier time maneuvering in traffic.

You'll also have an easier time taking on big cargo. Just fold down the rear seat to turn Lynx five-door's 16.6 cubic feet\* of covered cargo area into 26.1 cubic feet.\*

This Lynx's capacity for good times and family outings is extended by a standard 13-gallon fuel tank. And there's a standard four-wheel independent suspension that offers both MacPherson struts and coil springs to ease the load and soften the ride. After all, who says the road to adventure can't be both smooth and free of frequent fuel stops?

Lynx five-door. For the family that has everything . . . and wants to take it with them wherever they go.

*Above: Mercury Lynx LS five-door in Black over Dark Pewter Metallic with standard cast aluminum spoke wheels.*

*\*Based on MVMA specifications.*



## LIVING SPACE

Many small cars seem to be designed to spare the comfort rather than spoil the customer. Lynx is different. It's one four-seater that begs to be compared with bigger, plusher cars.

Take the elegant LS interior shown above, for example. This is Lynx at its most luxurious. The individual front seats recline and are contoured for added lateral support. There's a new standard folding center armrest (also standard on

GS and RS models). The rear seatback folds to provide added cargo space. All seating surfaces are covered in a rich velour cloth, as are accents on the door panels.

16-ounce cut-pile carpeting covers the floor and the lower portion of the door panels. Even the rear cargo compartment is carpeted for good reasons. It looks great, acts as added



sound insulation and keeps parcels from sliding about.

But there's more to living with a Lynx than carrying cargo, so you'll find plenty of people room in the passenger compartment... room for heads, hips, arms and legs. There are armrests on each door, as well as assist handles to aid in exiting.

Driving is also easy in Lynx LS. The instruments are easy to read, the controls easy to reach. Burlled walnut woodtone appliques trim an instrument panel which features a standard AM/FM stereo radio, digital clock and more.

So make the most of all the space and luxury Lynx LS five-door offers you. Adjust your reclining seatback to the

angle that suits you best. Grip the soft four-spoke steering wheel. Scan the handsome, well-equipped instrument panel. Then think about all that you'd be missing if you had settled for anything less than a Lynx.

*Above: Lynx LS five-door interior with reclining individual seats in Medium Red velour cloth.*



# TRACK STAR

Tired of treading the same old trail every day? Had it with sacrificing fun for fuel efficiency? Then strap yourself into a fuel-injected, five-speed fun car called Lynx RS and take the long way home. The people at Lincoln-Mercury are obviously as bored with basic, lackluster transportation as you are. That's why they created an American-built car with multi-port Electronic Fuel Injection,\* 5-speed

manual transmission and performance handling suspension all standard... the kind of equipment that can turn any road into a rally course. Front-wheel drive efficiency takes on a whole new meaning the moment you turn the key in Lynx RS. The 1.6 liter overhead cam engine comes alive as an Electronic Fuel Injection System goes into action at a touch of the accelerator.

Slip the new five-speed transmission into gear and launch yourself far beyond mere motoring. Feel the traction of front-wheel drive as TRX tires grab the pavement and a special handling package takes charge.

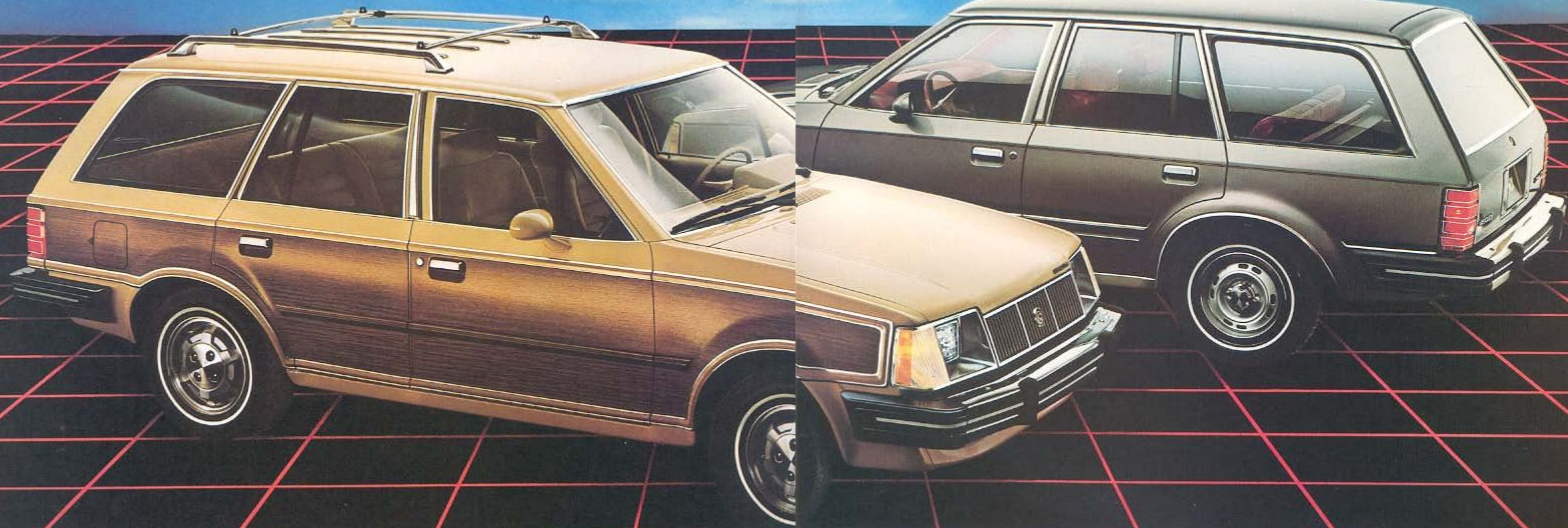
You're sitting in formfitting Sport seats. You're gripping the four-spoke sport steering wheel which links you to the precise rack-and-pinion steering. You see the Arc Yellow graphics on the myriad of gauges that monitor your progress across the distances. You shift into fifth and slip far away from the eyes of those who watch at the curb and wish they were on board.

All that's left behind is a hint of your passing. A flash of Black accents. A glimmer of front and rear spoiler and road lights. A memory of dual remote-control racing mirrors and TR Sport steel wheels. The dying echo of a tuned exhaust. And the reminder that you've come and gone in an extraordinary vehicle called Lynx RS.

*Above: Mercury Lynx RS in Bright Red... available fall of 1982.*

*Inset: Lynx RS' standard cloth-covered Sport seat interior in Black... available fall of 1982.*

*\*Subject to late availability.*



## TRAVELLING COMPANIONS

Everyone needs a car where family and friends can stretch out and relax, even when they're on the road.

The 1983 Lynx station wagons are just such cars. Big enough to treat you and yours to many of the comforts of home, small enough to be maneuverable and fun to drive, even on crowded streets.

That's because Lynx wagons are . . . well, "Lynx-size." That means seating for four, yet with trim exterior dimensions because of the state-of-the-art front-wheel drive/transverse-mounted engine design shared by all Lynxes.

But, as you might expect, *these* Lynxes offer even more. Because they're wagons, you'll find a lot more to like about

them, starting with their ability to take on large cargoes . . . up to 58.4 cubic feet\* each with their rear seats folded down. That ability is enhanced by standard features like cargo compartment carpeting, a rear storage bin, tailgate ajar warning light, and power brakes.

You can also outfit these Lynxes with traditional station wagon options like a

rear window wiper/washer which helps keep your liftgate window clear in all kinds of weather.

If your Lynx wagon is a GS or LS, you can order the Villager Woodtone Option, which adds the look of wood to the bodyside and tailgate and adds a luggage rack to the rooftop.

Now isn't it time you added a Lynx

wagon to your life and felt more at home on the road?

*Foreground: Mercury Lynx LS wagon with Villager Option, shown in Light Desert Tan, with standard cast aluminum spoke wheels.*

*Background: Mercury Lynx GS wagon in Dark Pewter Metallic with standard semi-styled steel wheels.*

*\*Based on MVMA specifications.*



## WORKING SPACE

The many long hours devoted to the creation of the Lynx wagon were spent on more than hardware, as the rich, roomy LS interior shown above clearly illustrates. Make no mistake about it, features like a fully independent suspension and 1.6 liter overhead cam engine help make Lynx one hardworking car. But this is a Mercury, after all. That

means you can expect a certain comfort level to be maintained. Take the individual front seats, for instance. They're soft, yet surprisingly supportive . . . even for the spirited driving style every Lynx seems to inspire. Order the LS interior shown here, and those comfortable front seat contours are covered in velour cloth. The seatbacks also recline at the touch of a lever and the

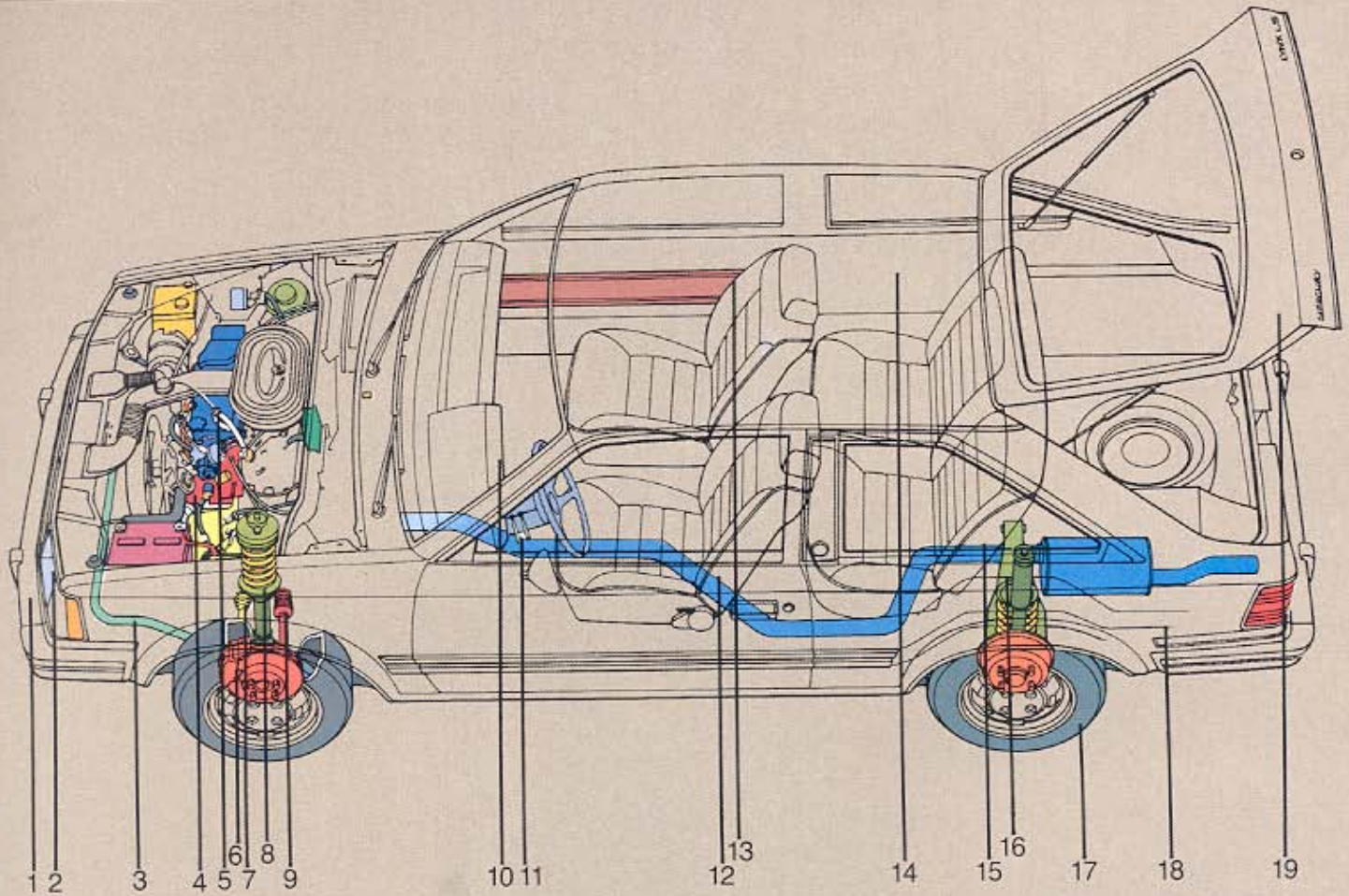
standard center armrest folds away when not in use. The full-width rear seat also has more to offer than handsome design, great comfort and plush upholstery. It folds forward to form a carpeted floor, increasing Lynx wagon's cargo capacity from 27.8 cubic feet to 58.4 cubic feet. When the rear seat is up, you'll find a color-keyed cargo area cover behind the

seatback. It works like a window shade: rolling out to cover valuables, rolling up when not in use. You'll also notice a handy cargo area storage bin built right into the side wall. It keeps small items from shifting about. One thing you can't hide is Lynx LS' dedication to spoiling you with luxurious touches not usually found in ordinary

wagons. Color-keyed carpeting covers more than just passenger compartment and cargo area floors. You'll find it on the inside of the liftgate, the rear seatback and lower door trim panels. Lynx LS wagon's instrument panel offers an impressive array of standard luxury and convenience features, too. There's an AM/FM stereo radio, a digital clock, a tachometer and trip odometer,

burled walnut woodtone accents and a special graphic warning display to inform you of low fluid levels or lamp failures. The 1983 Lynx LS wagon. It works hard at making your life on the road a lot easier. Above: Lynx LS wagon's standard interior with reclining individual seats in Desert Tan velour luxury cloth.

# ENGINEERING



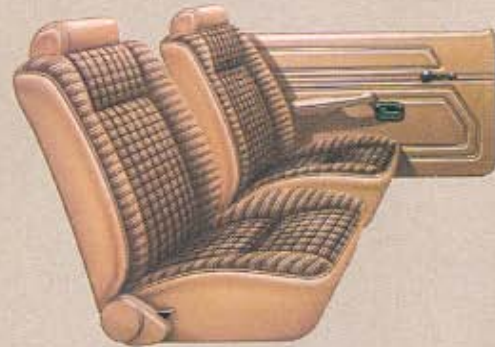
# SEATING CHOICES



High-back individual seats. Standard in cloth on LYNX L in Black, Medium Red, Academy Blue and Desert Tan.



High-back individual seats in vinyl. Optional on LYNX L in Black, Medium Red, Academy Blue, and Desert Tan. These seats also available in Opal with Black, Medium Red, Academy Blue, and Desert Tan interior components.



Reclining low-back individual seats in cloth. Optional on LYNX L in Black, Medium Red, Academy Blue and Desert Tan.

# EXTERIOR COLORS

## STANDARD COLORS for Lynx L, GS, LS, and RS

- Black
- White\*
- Dark Walnut Metallic\*
- Light Pewter Metallic
- Dark Pewter Metallic\*

- Bright Red
- Medium Dark Red Metallic\*
- Bright Bittersweet
- Medium Yellow\*

- Medium Light Academy Blue Metallic\*
- Dark Academy Blue Metallic\*
- Light Desert Tan\*
- Desert Tan \*Not available on Lynx RS



There's even more to Lynx than meets the eye. This is obviously one feature-packed car engineered and built for the eighties. Join us now in a journey through the inner space and ingenuity to be found in the design of Lynx for 1983.

1. High-strength, light alloy bumpers protect Lynx's body without adding a lot of gas-wasting extra weight.
2. Halogen sealed-beam headlamps provide a brighter, whiter light than is available with conventional sealed-beam units.
3. A standard front stabilizer bar helps reduce body roll in sharp turns and quick lane-change maneuvers.
4. The standard four-speed manual transaxle features an overdrive fourth gear which reduces engine revolutions at cruising speeds for smooth, quiet operation and increased efficiency. The optional five-speed manual transaxle (standard on Lynx RS model, which is subject to late availability) allows for a true close-ratio four-speed configuration, as well as a separate fifth gear for highway economy.
5. Lynx's standard 1.6 liter four-cylinder engine features a sophisticated Compound Valve Hemispherical (CVH) combustion chamber design and overhead cam valve train for smooth, efficient performance. Lynx RS' standard 1.6 liter EFI engine (subject to late availability) features Electronic Fuel Injection that eliminates the need for a conventional carburetor. Because this system is electronically controlled, it results in improved fuel distribution to the engine's cylinders.
6. A standard split-diagonal braking system provides both front and rear braking capabilities for controlled stops even in the

event of a partial system failure.

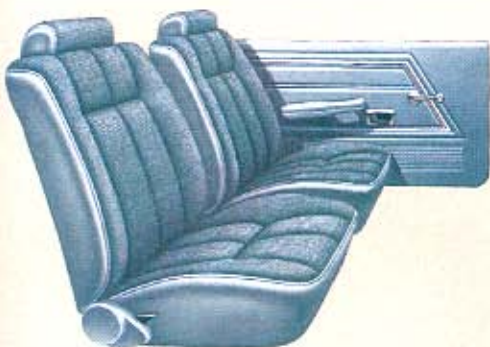
7. Front-wheel drive provides good traction on wet, slippery surfaces and *pulls* a car through mud and snow more easily than conventional rear-wheel drive systems can *push* a car.
8. Lynx's MacPherson strut front suspension combines excellent handling and stability.
9. Standard rack-and-pinion steering offers excellent steering precision and response in both normal driving situations and emergency maneuvers.
10. Standard instrumentation includes easy-to-read speedometer, odometer and fuel gauge, plus warning lights for engine, alternator, brakes and seat belts . . . as well as high-beam and turn indicator lights.
11. Easy-to-use stalk-mounted control levers handle turn indicator, horn, headlamp dimmer and windshield wiper/washer functions.
12. Optional reclining seatbacks allow increased comfort and improved driving position. Inertia seatback release makes for easy rear-seat access.
13. High-strength steel doorguard beams offer added side impact protection.
14. Sound insulation in the form of fiber pads, polyurethane foam, fiberglass material and heat-bondable mastic sound deadener are used in various locations throughout Lynx to help reduce engine and road noise.
15. Folding rear seat creates a load floor and increased rear cargo capacity.
16. Independent rear suspension combines with independent front suspension to provide good road-holding and ride qualities.
17. Lynx is equipped with four P-metric steel-belted radial ply tires, which help optimize fuel economy through their relatively high inflation pressure capability (up to 35 psi), light tire

weight, and low rolling resistance rubber tread compound.

18. Unitized body construction for greater structural strength and rigidity.
19. Easy-access rear hatchback design for added convenience and practicality.

## LYNX SPECIFICATIONS

	Lynx 3-Door	Lynx 5-Door	Lynx Wagon
Wheelbase	94.2"	94.2"	94.2"
Turning Diameter	35.5'	35.5'	35.5'
Overall Length	163.9"	163.9"	165.0"
Overall Height	53.3"	53.3"	53.3"
Overall Width	65.9"	65.9"	65.9"
Wheel Tread			
- Front	54.7"	54.7"	54.7"
- Rear	56.0"	56.0"	56.0"
Headroom			
- Front	38.1"	38.1"	38.1"
- Rear	37.4"	37.4"	38.2"
Legroom			
- Front	41.5"	41.5"	41.5"
- Rear	35.0"	35.0"	35.0"
Shoulder Room			
- Front	51.4"	51.4"	51.4"
- Rear	51.7"	51.1"	51.1"
Hiproom			
- Front	52.2"	52.2"	52.2"
- Rear	44.1"	44.4"	44.4"
Luggage Capacity/ Cargo Volume (Cu. Ft.)*	26.4	26.1	58.4
Fuel Capacity (Gals.)	13.0**	13.0	13.0
Curb Weight, 49 States 7.5x45.4 (Lbs.)	2032	2094	2128
*With rear seat folded down			
**10.0 gal. with fuel economy calibration			



Reclining low-back individual seats. Standard in cloth, optional in new knitted vinyl on LYNX GS in Black, Medium Red, Academy Blue and Desert Tan. Vinyl seats also available in Opal with Black, Medium Red, Academy Blue and Desert Tan interior components. Fold-down center armrest (not shown) standard with all GS seating choices.



Reclining low-back individual seats in luxury velour cloth. Standard on LYNX LS in Black, Medium Red, Academy Blue and Desert Tan. Fold-down center armrest (not shown) standard.



Reclining Sport seats. Standard on LYNX RS in Black or Desert Tan Sport-striped cloth with fold-down center armrest. (Both the seats and LYNX RS are subject to late availability.)

### OPTIONAL TU-TONES\*

(either color may be used on top)

- Black/Dark Pewter Metallic
- Desert Tan Metallic/Light Desert Tan
- Dark Academy Blue Metallic/Light Academy Blue Metallic

- Medium Dark Red Metallic/Medium Red Metallic

\*Not available with Villager Option or on RS.

### OPTIONAL GLAMOUR COLORS

for Lynx L, GS, and LS only

- Medium Red Metallic
- Light Academy Blue Metallic
- Desert Tan Metallic

# STANDARD FEATURES



**LYNX L 3-DOOR  
LYNX L 5-DOOR  
LYNX L STATION WAGON**  
STANDARD FEATURES ON ALL LYNXES:  
STANDARD FUNCTIONAL FEATURES

- Front-wheel drive
- 1.6L 2-bbl. 4-cylinder engine
- Solid-state ignition
- 4-speed manual overdrive transaxle with floor shift
- Self-adjusting clutch
- Manual front disc/rear drum brakes (power brakes on wagon)
- Manual rack-and-pinion steering
- MacPherson strut front suspension with stabilizer bar
- Fully independent rear suspension
- P165/80R13 steel-belted radial tires
- P155/80D13 BSW temporal spare tire
- Maintenance-free 36 amp-hr battery
- Inside hood release
- Electric windshield washer/wiper
- Flash-to-pass headlamp feature
- "Tailgate ajar" warning light (wagon)
- 13-gallon fuel tank

- Yellow indicators for under hood service points:
  - power steering dipstick (opt.)
  - engine oil dipstick
  - engine oil filler cap
  - radiator coolant recovery filler cap
  - windshield washer fluid cap

**STANDARD INTERIOR FEATURES**

- Cloth high-back individual seats
- Folding rear seat with dual release handles
- Color-keyed deluxe seat belts with tension reliever
- Soft, color-keyed four-spoke steering wheel
- Stalk-mounted controls
- Bronze instrument cluster trim applique
- Day/night rearview mirror
- Color-keyed swivel sun visors
- Full door and quarter trim panels
- Color-keyed 10-ounce cut-pile passenger compartment carpeting
- Black load floor cover
- Cargo area cover
- Front door courtesy light switches
- Header-mounted dome lamp
- Coat hooks
- Instrument panel storage bins
- Coin trays
- Ashtray
- Cigarette lighter
- Glove box
- Consolette
- Sound Insulation Package
- Quarter trim panel storage bin (wagon)
- Color-keyed 14-ounce load floor carpet (wagon)
- Removable package tray (3-door and 5-door)
- Color-keyed cargo area cover (wagon)
- Black burlywood trim and color-keyed plastic quarter trim panel inserts in luggage compartment

**STANDARD EXTERIOR FEATURES**

- Sealed-beam halogen headlamps
- Semi-styled steel wheels with bright lug nuts and trim rings
- Argent wheel hub covers
- Bright left-hand outside mirror
- Bright grille and headlamp housing

- Bright window sill, wheel-lip, door, window frame, drip moldings
- Front and rear short bumper end caps
- Wraparound taillights
- Black center pillar applique (3-door)
- Brushed aluminum center pillar applique (5-door and wagon)
- Bright front and rear bumpers
- Matte Black painted rocker panels



**LYNX GS 3-DOOR  
LYNX GS 5-DOOR  
LYNX GS STATION WAGON**

- Include all Lynx L standard features *plus* these additions and/or differences:
- Reclining low-back cloth individual seats with cloth headrests
  - Color-keyed fold-down center armrest
  - Upgraded door trim
  - AM radio with Bronze applique and dual front speakers (may be deleted for credit)
  - Locking glove box
  - Dual visor vanity mirrors
  - Black front air dam
  - Delete matte Black rocker panel paint
  - Wide bodyside molding with Argent stripe

# OPTIONS

	LYNX L	LYNX GS	LYNX LS	LYNX RS
<input type="checkbox"/> Air Conditioning, Manual	O	O	O	O
<input type="checkbox"/> Armrest—Front Center Fold-Down	O	S	S	S
<input type="checkbox"/> Battery, Heavy-Duty 48 Amp-Hr Maint.-Free	O	O	O	O
<input type="checkbox"/> Bumper Guards—Front and Rear	O	O	O	S
<input type="checkbox"/> Bumper Rub Strips—Front and Rear	O	S	S	S
<input type="checkbox"/> Clock, Digital	O	O	S	O
<input type="checkbox"/> Console with Graphic Warning Display	O	O	S	S
<input type="checkbox"/> Defroster, Electric Rear Window	O	O	S	O
<input type="checkbox"/> Extended Service Plan (See Page 19)	O	O	O	O
<input type="checkbox"/> Heater, Engine Block	O	O	O	O
<input type="checkbox"/> Luggage Rack, Roof-Mounted*	O	O	O	NA
<input type="checkbox"/> Mirrors, Dual Remote-Control	O	O	S	S
<input type="checkbox"/> Molding, Vinyl Bodyside	O	S	S	S
<input type="checkbox"/> Paint, Glamour	O	O	O	NA
<input type="checkbox"/> Paint, Tu-Tone	O	O	O	NA
<input type="checkbox"/> Paint Stripe	O	S	S	S
<input type="checkbox"/> Power Brakes*1	O	O	O	O
<input type="checkbox"/> Power Steering	O	O	O	O
<input type="checkbox"/> Protection, Lower Bodyside Vinyl Coating	O	O	O	O

**RADIOS**

	LYNX L	LYNX GS	LYNX LS	LYNX RS
<input type="checkbox"/> AM (May be deleted for credit)	O	S	NA	S
<input type="checkbox"/> AM/FM Monaural	O	O	NA	O
<input type="checkbox"/> AM/FM Stereo	O	O	S	O
<input type="checkbox"/> AM/FM Stereo with Cassette	O	O	O	O
<input type="checkbox"/> AM/FM Stereo with 8-Track Tape	O	O	O	O
<input type="checkbox"/> Premium Sound System (See page 19)	O	O	O	O
<input type="checkbox"/> Roof, Flip-Up Open Air*	O	O	O	O
<input type="checkbox"/> Upshift Indicator Light*	O	O	O	O
<input type="checkbox"/> Speed Control	O	O	O	O
<input type="checkbox"/> Tinted Glass	O	O	O	O
<input type="checkbox"/> Windows, Manual Pivoting Front Vent	O	O	O	O
<input type="checkbox"/> Windows, Remote-Control Quarter <sup>2</sup>	O	O	O	O
<input type="checkbox"/> Windshield Wipers, Interval	O	O	S	O
<input type="checkbox"/> Wiper/Washer Rear Window	O	O	O	NA
<b>ENGINES/TRANSMISSIONS/TRANSAXLES</b>				
<input type="checkbox"/> 1.6L 4-Cyl./3-Speed Automatic	O	O	O	NA
<input type="checkbox"/> 1.6L Higher Output 4-Cyl./5-Speed Manual or 3-Speed Automatic	O	O	O	NA <sup>3</sup>
<input type="checkbox"/> 1.6L EFI 4-Cyl./5-Speed Manual <sup>4</sup>	NA	NA	NA	S
<input type="checkbox"/> 1.6L EFI 4-Cyl./3-Speed Automatic <sup>4</sup>	NA	NA	NA	O

- Black lower back panel surround molding (3-door and 5-door)
- Two-color dual bodyside paint stripes
- Bumper rub strips with Argent stripe (front and rear)
- Long front and rear bumper end caps with Argent stripe
- Bright window regulator handles
- Color-keyed load floor carpeting
- Passenger's side rear ashtray
- Color-keyed carpet trim on lower back panel of luggage compartment (3-door, 5-door)
- Carpeted rear seatback (wagon)
- Remote liftgate release (3-door and 5-door)
- Remote release fuel filler door
- Roof grab handles for passengers
- Bright Argent wheel hub covers
- "GS" medallion



**LYNX LS 3-DOOR  
LYNX LS 5-DOOR  
LYNX LS STATION WAGON**

- Include all Lynx GS standard features *plus* these additions and/or differences:
- AM/FM stereo radio with dual front and rear speakers
  - Electric rear window defroster

- Reclining low-back individual seats in luxury velour cloth
- Velour cloth applique on door, 14½-ounce carpeting on lower door
- Cloth sun visors
- Cloth headliner
- Burlled walnut woodtone texture on cluster, radio, and console appliques
- "LS" medallion
- Digital clock with stopwatch feature
- Instrumentation Group
- Interval windshield wipers
- Console with graphic warning display, ashtray and cigarette lighter
- 16-ounce passenger compartment carpeting
- Rear door dome light switches (5-door and wagon)
- Ashtray, glove box, dome/map lights
- Cargo and engine compartment lights
- Headlamp-on warning buzzer
- Driver's side rear ashtray
- Dual remote-control color-keyed sport mirrors (right mirror convex)
- Cast aluminum spoke wheels
- Carpeted rear seatback (3-door and 5-door)
- Deluxe sound insulation



**LYNX RS 3-DOOR\***

- Includes all Lynx L standard features *plus* these additions and/or differences:
- 1.6 L EFI 4-cylinder engine\*\*
  - 5-speed manual transaxle
  - TR Sport Suspension
  - Reclining high-back Sport seats in unique cloth
  - Color-keyed fold-down center armrest
  - Unique door trim panels with map pocket, seat cloth inserts, lower panel carpeting

- Black 4-spoke sport steering wheel
- AM radio with dual front speakers (may be deleted for credit)
- Dual visor vanity mirrors
- Remote release fuel filler door
- Instrumentation Group with Arc Yellow graphics
- Console with ammeter, oil pressure gauge, low washer fluid and door ajar warnings
- Black instrument cluster, radio and console appliques
- 16-ounce color-keyed passenger compartment carpeting
- Color-keyed load floor carpeting
- Dual color-keyed rear ashtrays
- Color-keyed roof assist handles for front-seat passenger and rear-seat passengers
- Black dual remote-control sport mirrors (right mirror convex)
- TR Sport steel wheels
- P165/70R 365 Michelin TRX BSW tires
- Blackout grille treatment
- Black wheel "spats" with integral Black rocker panel molding
- Black headlamp frames
- Black taillamp surround molding
- "Smoked" taillamp lenses
- Flat Black center pillar applique with louvers
- Blackout treatment: windshield molding, rear window and drip moldings, window frame moldings, door sill moldings, rear license plate area, door handles, and lock cylinders
- Black front and rear bumpers
- Black front and rear bumper guards
- Front and rear long bumper end caps and rub strips with Argent stripe
- Black front air dam with road lamps
- Wide Black bodyside molding with Argent stripe
- Black soft decklid spoiler
- "LYNX RS" tape decals on doors and rear decklid
- Bright "EFI" and "5-speed" fender badges

\*Subject to late availability.  
\*\*1.6L Higher Output engine substituted in high altitude areas.

	LYNX L	LYNX GS	LYNX LS	LYNX RS
<b>RADIAL TIRES AND WHEELS</b>				
<input type="checkbox"/> P165/70 365 BSW	O	O	O	S
<input type="checkbox"/> P165/80R13 WSW	O	O	O	NA
<input type="checkbox"/> P175/80R13 BSW <sup>4*</sup>	O	O	O	NA
<input type="checkbox"/> P175/80R13 WSW <sup>4*</sup>	O	O	O	NA
<input type="checkbox"/> Semi-Styled Steel Wheels	S	S	NA	NA
<input type="checkbox"/> Cast Aluminum Spoke Wheels	O	O	S <sup>5</sup>	O
<input type="checkbox"/> TR Performance Package with Steel Wheels	O	O	O	S
<input type="checkbox"/> TR Performance Package with Cast Aluminum Wheels	O	O	O	O

BSW—Black Sidewall. WSW—White Sidewall.

**OPTIONAL PACKAGES**

<input type="checkbox"/> <b>APPEARANCE PROTECTION GROUP</b>	O	O	O	O
Includes door-edge guards, front carpet floor mats, glove box lock (standard on Lynx GS, LS and RS) and license plate frame(s).				
<input type="checkbox"/> <b>HANDLING SUSPENSION</b>	O <sup>6</sup>	O <sup>6</sup>	O	S
Includes upsized front stabilizer bar, heavy-duty shock absorbers, and stiffer front and rear springs. Included in TR Performance Packages. Includes styled steel wheels on L and GS.				

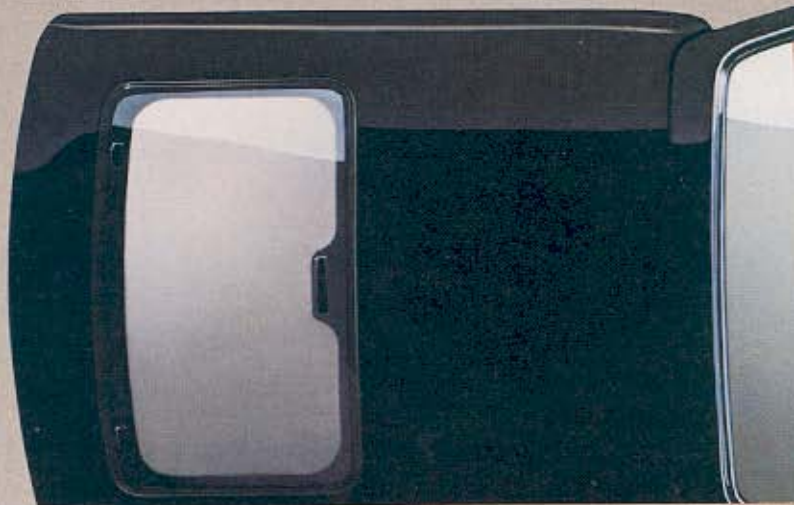
	LYNX L	LYNX GS	LYNX LS	LYNX RS
<input type="checkbox"/> <b>INSTRUMENTATION GROUP</b>	O	O	S	S
Includes large round dials for speedometer and tachometer, small dials for temperature and fuel gauges, and a trip odometer.				
<input type="checkbox"/> <b>LIGHT GROUP</b>	O	O	S	O
Includes glove box light, dome/map light, cargo compartment light, engine compartment light, ashtray light, headlamp-on warning buzzer, rear door and liftgate/hatchback courtesy light switch.				
<input type="checkbox"/> <b>TR SPORT SUSPENSION</b>	O	O	O	S
Includes all unique TR Suspension components. Requires TR Performance Package tires.				
<input type="checkbox"/> <b>VILLAGER WOODTONE OPTION<sup>7</sup></b>	NA	O	O	NA
Includes woodtone trim, Brown bodyside molding with Black insert, woodtone rails with bright edges, and roof-mounted luggage rack.				

S—Standard O—Optional NA—Not Available \*This equipment is subject to additional ordering requirements or limitations. Please consult your salesperson for details.  
<sup>1</sup>Standard on station wagon. <sup>2</sup>Available on 3-door only. <sup>3</sup>Standard at high altitude locations.  
<sup>4</sup>Late availability. <sup>5</sup>Available with Handling Package only. <sup>6</sup>Includes styled steel wheels, which are subject to late availability. <sup>7</sup>Available on station wagon only.

# OPTIONS

**FLIP-UP OPEN AIR ROOF.** Let the sunshine, fresh air, and the moonlight in with this easy-to-handle, easy-to-like option.

**ELECTRIC REAR WINDOW DEFROSTER.** With just the flick of a switch, you have an effective way to remove fog or frost. (Standard on Lynx LS.)



**SPEED CONTROL.** Maintain the speed you select with the touch of a finger and lessen fatigue on long trips. Includes four-spoke "soft-feel" steering wheel and "resume" feature.



**WHEELS.** Shown, left to right: styled steel (late availability), cast aluminum spoke (standard on

LS), TR Sport cast aluminum, and TR Sport steel.

RESUME SET ACCEL COAST



**REMOTE-CONTROL REAR-QUARTER WINDOWS.** Open or close rear quarter windows for added ventilation by activating the twin slide controls mounted on the floor between the front seats (on console if ordered). Available on 3-door hatchbacks only.



- POWER BRAKES\*
- POWER STEERING

\*Standard on wagon.

# power



**AM/FM STEREO RADIO WITH CASSETTE TAPE.** Lynx offers two radio choices. (See page 16). Add optional Premium Sound System to any of the stereo radios for greatly improved sound quality. This System includes dual rear premium speakers and power amplifier.

**REAR WINDOW WIPER/WASHER.** Helps clear rear window of rain or snow. Instrument panel-mounted controls allow you to activate the system easily even when driving.



**MANUAL PIVOTING FRONT VENT WINDOWS.** This comfort feature allows you to control the direction and velocity of the airflow for added interior ventilation.

## Motorcraft

### QUALITY REPLACEMENT PARTS FROM FORD

Your new Mercury Lynx comes equipped with factory-engineered and approved parts including a dependable Motorcraft battery, shock absorbers, spark plugs, long life oil filters, and motor oil. For continued top performance, be sure to specify genuine Motorcraft parts whenever replacement is necessary.



Ford Motor Company's optional Extended Service Plan covers certain selected components on new Lincoln-Mercury cars for longer than the vehicle's basic warranty. The cost is so moderate for the protection you get that it could pay for itself the first time you need it. Ask your Lincoln-Mercury Dealer for complete details of the Plan, which is available on cars sold and normally operated in the 50 United States and Canada.

### FORD-PAID REPAIR PROGRAMS AFTER THE WARRANTY PERIOD

Sometimes Ford Motor Company offers adjustment programs to pay all or part of the cost of certain repairs. These programs are intended to assist owners and are in addition to the warranty or to required recalls.

Ask Ford Motor Company or your Lincoln-Mercury Dealer about such programs relating to your Ford or Lincoln-Mercury vehicle.

To get copies of any adjustment program for your vehicle or the vehicle of interest to you:

Call Ford toll-free at

1-800-241-3673.

In Alaska or Hawaii, call

1-800-243-3711.

In Georgia, call

1-800-282-0959

or write Ford at

Ford Customer Information System

Post Office Box 95427

Atlanta, GA 30347

We'll need your name and address; year, make, and vehicle ID no., as well as engine size; and whether you have a manual or automatic transmission.

### GAS MILEAGE

At the time this catalog was published, 1983 EPA estimates were not available. Lynx should, however, post excellent miles per gallon ratings. For the latest information, consult your Lincoln-Mercury Dealer or the 1983 EPA Gas Mileage Guide.

### SAFETY FEATURES

Lynx has Ford Lifeguard Design Safety Features for your protection: a safety-designed roof, a safety-designed front end, a steel beam in each side door, an energy-absorbing steering column and steering wheel, corrosion-resistant brakes, dual-designed braking system, safety rim wheels and more.

### MAINTENANCE—LESS THAN AN HOUR A YEAR

Lynx was designed to keep your cost of driving down. For example, Lynx has a chassis that's lubed for life, 30,000-mile spark plugs, self-adjusting brakes and clutch, maintenance-free battery and more. Scheduled maintenance—periodic servicing as specified in the owner's manual for the first 5 years or 50,000 miles—comes to less than one hour for each year of driving.

### TECHNICAL SERVICE BULLETINS

All vehicles need repairs during their lifetime. Sometimes Ford issues Technical Service Bulletins (TSBs) and easy-to-read explanations describing unusual engine or transmission conditions which may lead to costly repairs, the recommended repairs, and new repair procedures. Often a repair now can prevent a more serious repair later. Ask Ford Motor Company or your Lincoln-Mercury Dealer for any such TSBs and explanations relating to your Ford or Lincoln-Mercury vehicle.

To get copies of these Technical Service Bulletins and explanations for your vehicle or the vehicle of interest to you:

Call Ford toll-free at

1-800-241-3673. In Alaska or

Hawaii, call 1-800-243-3711. In

Georgia, call 1-800-282-0959

or write Ford at

Ford Customer Information System

Post Office Box 95427

Atlanta, GA 30347

We'll need your name and address; year, make, and vehicle ID no., as well as engine size; and whether you have a manual or automatic transmission.

Specifications and descriptions used were in effect when this publication was approved for printing. Lincoln-Mercury Division reserves the right to discontinue options at any time, or change specifications, equipment or designs without notice and without incurring obligation.

Standard and optional equipment listed is subject to change. Some features described are optional at extra cost. Some options are required in combination with other options.

Availability of some features may be subject to a slight delay.

### Get it together—Buckle up.

Buy or lease your Lynx from your Lincoln-Mercury Dealer.

**MERCURY. THE SUBSTANCE SHOWS.**



**MERCURY LYNX**

LINCOLN-MERCURY DIVISION



Litho in U.S.A. (967M) 8-82 Form No. P-8