

# 1987 THUNDERBIRD





# Thunderbird

## Best-built American cars six years running

"Quality is Job 1." In fact, for the past six consecutive years, Ford quality has led all other American car companies. This is based on an average of owner-reported problems in the first three months of service on '86 models, and in a six-month period on '81-'85 models designed and built in North America.

### Thunderbird for 1987

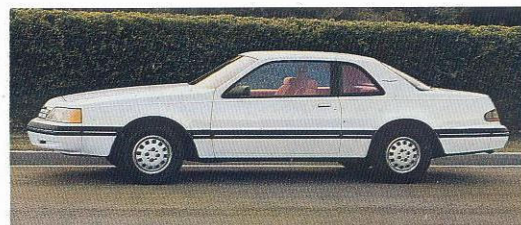
Those who consider driving to be one of life's pleasures are invited to see and drive the 1987 Thunderbirds. A refined front suspension gives the standard model an improved ride and exterior styling refinements enhance its aerodynamic shape. There's a new V8-powered Thunderbird Sport. The LX model includes extensive comfort and convenience extras. And Thunderbird Turbo Coupe takes its place among the finest of the world's performance automobiles. The 1987 Thunderbirds await your inspection — at a Ford Dealer near you.

**Thunderbird LX** is for those who want a driver's car with an extra measure of comfort and convenience. The luxurious and well-appointed interior characterizes Thunderbird LX.

**Thunderbird Turbo Coupe** is equipped to be one of the most complete performance cars on the road today. Sophisticated handling componentry, anti-lock brakes and high-technology power put the Thunder in this very special Thunderbird.

**Thunderbird's** efficient, sculpted form hints at the future and says that its owner is no stranger to the fun of driving.

**Thunderbird Sport** takes that driving fun a step further with V-8 power and a handling-oriented chassis.



*Left: Thunderbird LX in Black. Some equipment shown may be optional. See options list on page 19.*

## Contents

Thunderbird LX	4-5
Thunderbird Interior	8-9
Thunderbird Turbo Coupe	10-11
Standard Thunderbird and Thunderbird Sport	12-13
Thunderbird — The Technical Side	14-15
Preferred Equipment Packages	16-17
Features, Options and Colors	18-19
Safety and Owner Benefits	20-21



*Left: Thunderbird LX in Dark Shadow Blue Clearcoat Metallic.*

*Below: Thunderbird LX in Driftwood Clearcoat Metallic.*

## Thunderbird LX

### Equipped for driving enjoyment

LX is for those who want Thunderbird driving enjoyment with an extra measure of luxury and convenience. On the outside are bodyside and decklid accent stripes, black electric remote-control mirrors, and styled road wheels. But what really sets the LX model apart is what's inside.

wipers are handy in light rain and drizzle. Systems sentry/diagnostic alert lights (page 9) alert you if something needs attention and the illuminated entry system provides extra security after dark. Power windows, power locks, an electronic digital clock and an automatic parking brake release are included. And a cassette tape player is added to the AM/FM stereo radio. LX takes your driving pleasure seriously.



### A well-trimmed interior

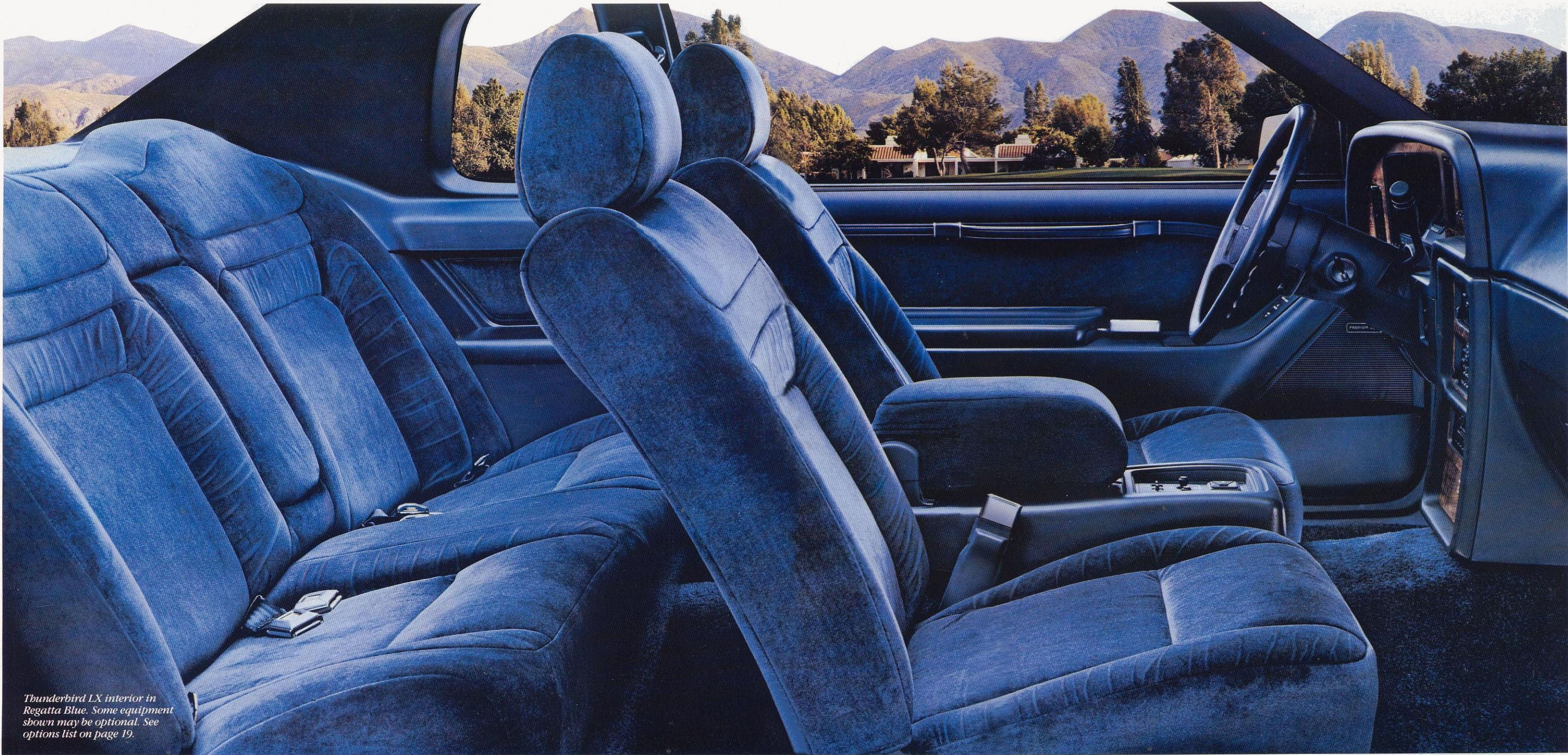
LX split bench seats are trimmed in luxury cloth and include head restraints that can be adjusted four ways. The tilt steering wheel is leather-wrapped and contains the speed control operation buttons. Luxury floor carpeting complements the specially finished LX door panels, which include courtesy lights. There are also courtesy lights in the instrument panel, door trim panels and quarter trim panels as well as a dual beam map light and an engine compartment light.

### LX standard features

Thunderbird LX standard equipment helps make life a little easier on the road. Interval windshield

*Some equipment shown may be optional. See options list on page 19.*





*Thunderbird LX interior in Regatta Blue. Some equipment shown may be optional. See options list on page 19.*



*Left: Optional electronic instrument cluster (standard with Sport) in Regatta Blue.*

*Below: Thunderbird's standard console and spacious deep-well trunk.*

*Some equipment shown may be optional. See options list on page 19.*



## A Well-Planned Environment

The science of ergonomics involves the relationship between a vehicle and its occupants. The best ergonomic design maximizes such factors as seating comfort, instrument/control placement, and visibility.

### Ergonomically designed

In Thunderbird, applied ergonomics has created an environment with sensible, convenient positioning of seats, controls, instruments and lights. Turn signals, windshield wiper/washer controls and headlamp dimmer, for example, are mounted on the steering column at the driver's fingertips.

### Thoughtful seat design

The individually reclining split bench seats also benefit from ergonomic design. They're body-contoured for comfortable back and thigh support with deep foam cushions supported by firm but flexible springs. The spacious rear seat can accommodate up to three passengers.

Available optionally are individual cloth seats with a full console. Adjustable articulated sport seats with full console are optional with Thunderbird LX.

### Spacious deep-well trunk

Proper interior design should provide ample room for luggage as well as people. And Thunderbird does. The deep-well trunk offers close to 15 cubic feet of cargo room partly due to the upright, out-of-the-way storage of the mini-spare tire. And the low lift height makes loading and unloading easy.

### Thunderbird instrumentation

The standard instrument panel features an electronic liquid crystal display (LCD) speedometer and combination odometer/trip odometer. Analog fuel and temperature gauges are accompanied by

lights for "fasten seat belts," "high beam" and "brake" (parking brake on). Also included are a service interval reminder, speed alert, positive shutoff air registers, side window demisters, and integral hood and parking brake release.

### The electronic instrument cluster

The electronic instrument cluster (shown at left) is standard on Thunderbird Sport and optional on Thunderbird and Thunderbird LX as part of the Electronic Equipment Group. In addition to the standard instrumentation, it includes a liquid crystal tachometer display for rpm and allows the driver to select readouts for temperature, oil pressure, volts or fuel. Fuel level is also displayed digitally and there's a "low fuel" flashing light.

Also included are six systems sentry lights (standard with Turbo Coupe, LX and Sport). They are lighted when certain conditions need attention: "check oil," "low fuel," "low washer fluid," "low beam out," "taillamp out," "door ajar" and "headlamps on."

A 5-function liquid crystal display (LCD) trip computer supplies useful travel information and an electronic digital clock displays the date, time, or elapsed trip time.



# Thunderbird Turbo Coupe

*Left: Thunderbird Turbo Coupe in Silver Clearcoat Metallic.*

*Right: Turbo Coupe Instrumentation in Medium Charcoal.*

*Below: Turbo Coupe Interior in Medium Charcoal.*

*Some equipment shown may be optional. See options list on page 19.*

## A true performance car

Some automobiles referred to as "sporty" cars or "performance" cars offer items like racing stripes along the sides and imitation performance seats. White letters on the tires, perhaps. Little more. And that's enough for some people. But for others, for real driving enthusiasts, there is a wide gulf indeed between the trappings of performance and a car like Thunderbird Turbo Coupe.

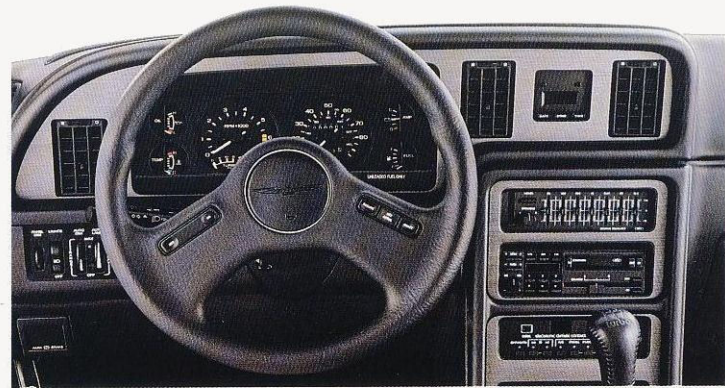
People who appreciate fine performance cars come from all walks of life, but they have one thing in common: they love the thrill and exhilaration of serious driving. For them, there is no such thing as just getting from point A to point B. For them, there is Turbo Coupe.

## Consider the equipment

A 2.3 liter turbocharged, inter-cooled engine. Electronic fuel injection. Four-wheel power disc

brakes with a sophisticated anti-lock brake system (ABS). A responsive automatic-ride-control suspension with rear quadra-shocks. Traction-Lok rear axle. Goodyear VR 60 performance tires on special 16" aluminum wheels. No-nonsense items. And they're discussed in more detail on pages 14-15.

Chances are if you've read this far you're the kind of performance person we mean. Read the Turbo Coupe equipment list on page 19. You may find cars with some of the features listed there, but it'll be tough to find a world-class touring car with all of them at Turbo Coupe's price. And by all means,



## Consider the interior

Turbo Coupe's articulated sport seats feature adjustable thigh supports and adjustable cushion bolsters. There's a power lumbar support that is infinitely adjustable and head restraints that adjust 4 ways. The entertainment system, an electronic AM/FM stereo radio, has to be heard to be appreciated. And there's full instrumentation, of course, including a turbo boost gauge and gauges for fuel, temperature, and oil pressure as well as an ammeter and automatic ride control indicator light.

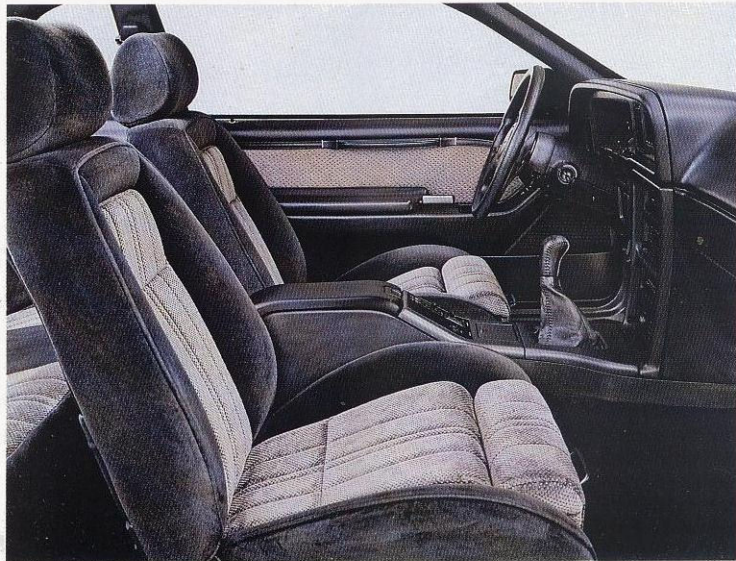
## Consider the exterior

Dual intercooler scoops on the hood. Hella® fog lamps on the front-end fascia and blackout accents all around. Turbo Coupe's exterior hardware is designed to be functional, not merely ornamental.

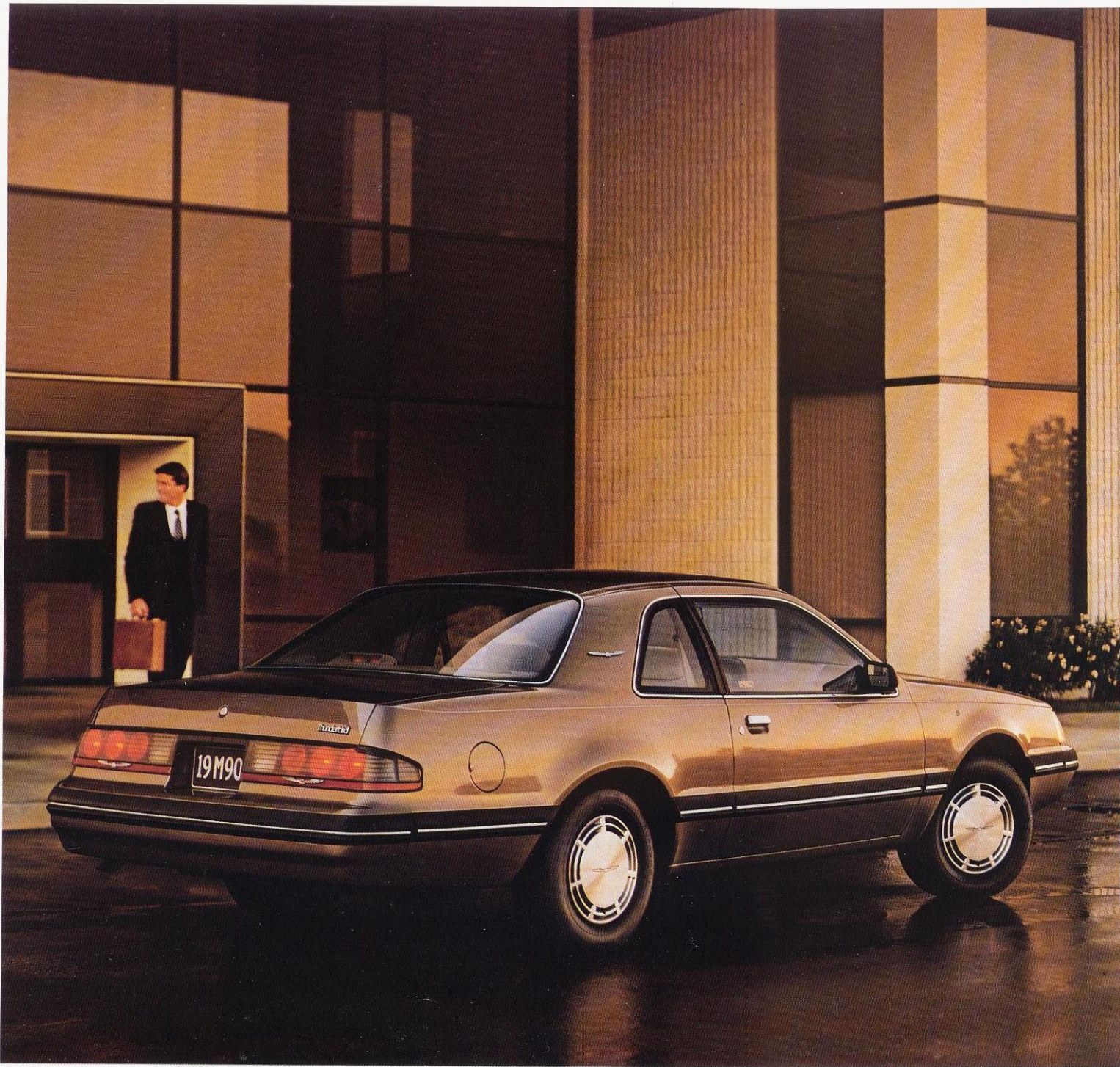
take a test drive in the car that runs with the best in the world.

## Turbo Coupe Special Value

A Special Value Program for Turbo Coupe makes it possible to get items like power driver's seat, speed control and electronic AM/FM stereo radio with cassette player at no extra charge when Preferred Equipment Package 157A is ordered. See page 17 for details.







# Thunderbird

*Left: Thunderbird in Sandalwood Clearcoat Metallic.*

*Right: Thunderbird Sport in Oxford White.*

*Below: Thunderbird Interior in Sand Beige. Some equipment shown may be optional. See options list on page 19.*

## In step with the times

Over the years, its name has brought to mind a special kind of car, one that makes a statement about the person who chooses it — a personal car. The 1987 Thunderbird carries on that tradition using the science and technology of the eighties. Its distinctive

shape is a masterful blend of functional design and sleek style. It's in step with the times.

## Thoroughly efficient

Thunderbird's dynamic shape uses the air around it to improve handling as well as fuel economy.\* Even the dual halogen headlamps were designed with wind management in mind. It's equipped the way

be deleted for credit) provides entertainment.

Air conditioning, tinted glass and a self-regulating quartz electric clock are among the many Thunderbird standard features (see page 19 for a comprehensive list). The right car for the times is one that looks to the future. See your Ford Dealer for a test drive today.



a driver's car should be, too. The 3.8 liter electronically fuel-injected V-6 engine and Automatic Overdrive transmission are a powerful but efficient team.

## Roadworthy

The rack and pinion steering system and front disc/rear drum brakes are power assisted. And the gas-pressurized struts and shock absorbers, along with variable-rate springs, produce good ride characteristics over a variety of road conditions.

## Thoughtfully equipped

Inside, the reclining cloth split bench seats feature cloth-covered head restraints and a handy console. The speedometer and odometer/trip odometer have electronic LCD readouts for easy reading and analog fuel and temperature gauges are included. An electronic AM/FM stereo radio (may

## Thunderbird Sport

The driving force of the Thunderbird Sport is its powerful 5.0 liter V-8 engine. Its handling suspension, too, is something special. The quadra-shock arrangement in the rear gives Sport a "car on rails" feel through turns. Special P215HR70 x 14 speed-rated, BSW handling tires are also standard.

Black accents and styled road wheels define Sport's exterior. Interior highlights include the electronic instrument cluster (described on page 9), individual seats with full console, a floor-mounted shift lever for the Automatic Overdrive transmission, a dual-note, sport-tuned horn, an electronic digital clock and the Light Group (dual beam map light, instrument panel courtesy lights and engine compartment light). Thunderbird Sport is more than flair, it's a comfortable, capable performer — V-8 style.

*\*See Gas mileage, page 15.*



*Left: Turbo Coupe in Medium Red Clearcoat Metallic.*

*Some equipment shown may be optional. See options list on page 19.*

*Right: Turbo Coupe's advanced anti-lock brake system means enhanced stopping ability under adverse driving conditions. It's discussed in detail at right.*

### **Thunderbird powerteams**

<b>Engine</b>	<b>Transmission</b>	<b>Axle Ratio</b>
3.8L V-6	Automatic Overdrive	3.27
5.0L V-8	Automatic Overdrive	2.73
2.3L Turbo	5-Speed manual	3.55
2.3L Turbo	Automatic Overdrive	3.73

# Thunderbird—The Technical Side

## The world-class performance of Turbo Coupe

Turbo Coupe is, without a doubt, the flagship of the Thunderbird fleet. Some of its more advanced features are described here. For more information on equipment, see page 11.

that Turbo Coupe's system control module monitors signals from speed, brake pressure and steering sensors as well as an acceleration signal from the EEC-IV engine control module. As it does, it adjusts the shock absorber damping automatically to provide the best ride/handling characteristics.

Shock damping is "soft" for a smooth ride or "firm" when extra handling is required. The "firm"

times per second, applying and releasing the brakes rapidly and repeatedly. This action allows the front wheels to simultaneously steer and brake, making it possible for the driver of a Turbo Coupe to maintain control under many circumstances that would normally mean a skid.

Anti-lock is applied to each front wheel independently, to the rear wheels as a pair, or to any combination of the three as the need arises.

running and easier starting. The Sport combines EFI with the power of the 5.0 liter V-8 engine.

The standard Automatic Overdrive transmission automatically shifts into an overdrive fourth gear when the vehicle exceeds approximately 45 mph. In overdrive, engine speed is reduced by about one-third. The result is improved highway fuel economy and reduced engine wear.

## Shock absorbers designed to smooth the way

All Thunderbird struts and shock absorbers contain a low-pressure charge of inert nitrogen gas. The gas suppresses foaming of the hydraulic fluid due to rapid bumps or similar agitation. This means the ride is smooth under normal circumstances, yet firm enough for rough going.

## A responsive suspension

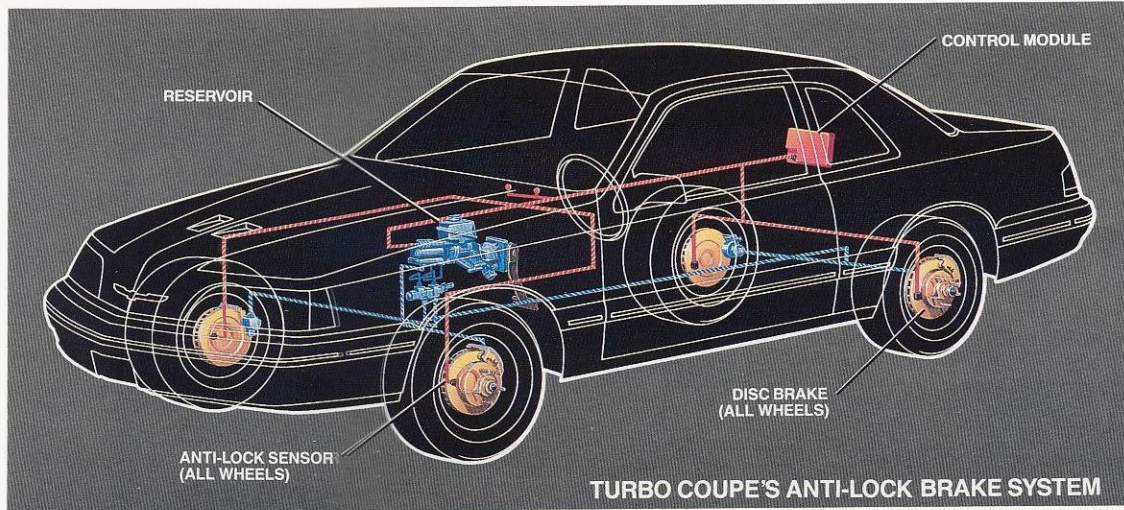
Thunderbird's modified MacPherson front suspension is combined with a 4-bar link configuration in the rear. Variable-rate springs have been added for improved overall stability, steering response and vehicle handling.

## A special suspension for Thunderbird Sport

The Sport's handling suspension includes Quadra-Shocks in the rear (also standard on Turbo Coupe), four shock absorbers that soften and smooth the rear wheels' vertical travel caused by bumps, pavement breaks, potholes, etc., and help control rotation of the axle during acceleration.

## Gas mileage

1987 EPA mileage estimates were not available at the time this catalog was approved for printing. As soon as EPA figures are released, your Ford Dealer will be among the first to receive this information and will be happy to pass it along to you.



## Turbocharged, intercooled power

Turbo Coupe's engine is an efficient, cross-flow head, overhead-cam 4-cylinder. Though it displaces only 2.3 liters, through turbocharging and intercooling it delivers approximately 190 horsepower when teamed with the carefully matched standard 5-speed manual overdrive transmission, 1500 horsepower with the optional Automatic Overdrive discussed below.

## Automatic Ride Control

Automatic ride control means

mode can also be selected manually by the driver. It's a sophisticated interactive suspension found on very few production cars.

## Enhanced stopping ability

Turbo Coupe's 4-wheel disc brakes include an anti-lock system (above). During hard braking, one or more of the wheels may lock, reducing the ability of the driver to maintain control. In Turbo Coupe, an electronic sensor constantly monitors wheel rotation.

If lockup is sensed, solenoid valves open and close up to ten

## Thunderbird: Advanced engineering in touch with today's driving demands

## Standard EFI V-6 power and AOD

The standard Thunderbird and Thunderbird LX feature a 3.8 liter V-6 engine with electronic fuel injection. EFI provides several advantages over carbureted systems. The major one is a more efficient use of fuel. EFI offers improved overall operation, smooth



## An Easy Way To Buy

### Preferred Equipment Packages

The Thunderbird pictured at left includes Preferred Equipment Package 151A. Thunderbird Preferred Equipment Packages include combinations of options that have proved popular with many car buyers, usually at a substantial savings from the price of the same options purchased separately. You get a well-equipped car at an attractive price.

### Selecting your automobile

Preferred Equipment Packages benefit you in two important ways: (1) They can save you money. (2) They simplify the ordering procedure.

Here's how it works: Choose Thunderbird, Thunderbird Sport or Turbo Coupe from the chart at right. Or choose one of the two Preferred Equipment Packages offered with LX. The entire ordering procedure is greatly simplified.

Individual features and options are listed on page 19. Contents of Preferred Equipment Packages are subject to change. For the latest information, consult your Ford Dealer.

### Thunderbird

	Thunderbird	Thunderbird Sport	LX	Select LX	Turbo Coupe
	151A	154A	161A	162A	157A
Rear window defroster (1)	•	•	•	•	•
Electronic digital clock	•	•	•	•	•
Interval wipers	•	•	•	•	•
Light Group	•	•	•	•	•
Power Lock Group	•	•	•	•	•
Dual electric remote-control mirrors	•	•	•	•	•
Electronic AM/FM stereo radio with cassette tape player	•	•	•	•	•
Speed control	•	•	•	•	•
Power driver's seat	•	•	•	•	•
Tilt steering wheel	•	•	•	•	•
Power side windows	•	•	•	•	•
Bodyside and decklid stripes	•	•	•	•	•
Styled road wheels	•	•	•	•	•
<b>Premium Luxury Package:</b>					
Heavy-duty battery		•			•
Electronic Equipment Group (2)				•	
Front floor mats				•	
Luxury Light/Convenience Group (2)	•				
Power antenna				•	
Dual power seats with power recliners (3)				•	

(1) Premium Sound System or graphic equalizer may be substituted (except when Electronic Equipment Group is ordered). (2) Detailed on page 18. (3) Power recliners are not included with optional articulated sport seats on LX.

### Thunderbird Turbo Coupe Special Value Program

The following items are included at no extra charge when Preferred Equipment Package 157A is ordered without deletions.

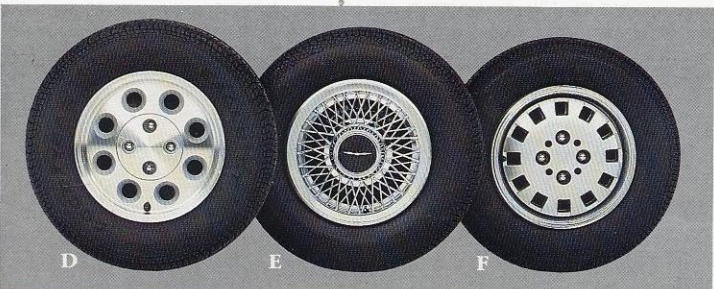
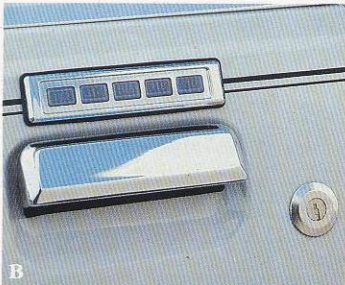
• Power Lock Group	• Tilt steering wheel
• Electronic AM/FM stereo radio with cassette tape player	• Power driver's seat
• Speed control	• Rear window defroster (1)

(1) Premium Sound System or graphic equalizer may be substituted. Additions to packages are allowed. If individual items are deleted, the Special Value Program discount does not apply.

## Well-Equipped Cars and Personalized Options



**Illustrated options:** (A) Electronic AM/FM stereo radio with cassette tape player and 7-band graphic equalizer (Note: Appearance of the radio may change) (B) Keyless Entry System (part of Electronic Equipment Group) (C) Electric rear window defroster (D) Cast aluminum wheels (E) Locking wire-style wheel covers (F) Styled road wheels (standard with Sport and LX) (G) Tot-Guard (for children 20-50 pounds, available at your Ford Dealer)



Notable standard features and options for each Thunderbird series are listed on the facing page. Before selecting options, check the Preferred Equipment Packages on page 17. You're likely to find that most of the equipment you want has already been conveniently included for you in a particular package. Options and their availability are subject to change during the year. Your Ford Dealer can advise you of current status.

### The Electronic Equipment Group

Includes the Electronic Instrument Cluster (described on page 9), electronic climate control air conditioning and the Keyless Entry System (B, left). The Keyless Entry System includes five small calculator-type pushbuttons in the upper driver's door which act as the key. When depressed in the proper coded sequence, doors are locked or unlocked (and decklid unlocked) automatically. The code can be changed by the owner at any time. This option includes the Illuminated Entry System, which lights the vehicle's interior and door lock cylinders when either door handle is raised.

### The Luxury Light/Convenience Group

Includes cornering lamps, dual illuminated visor mirrors, the Illuminated Entry System and the Autolamp System. The Autolamp System automatically turns headlamps on at dusk and off at daybreak. The "auto dim" feature maintains low beam in traffic or lighted areas, then switches to high beam when conditions permit. In addition, headlamp turnoff may be delayed for up to four minutes to light your way into the house.

## Thunderbird Features and Options

• = Standard ■ = Optional

	Thunderbird Standard	Sport	LX	Turbo Coupe
<b>ENGINEERING</b>				
3.8 liter V-6 engine with electronic fuel injection	•	•	•	•
5.0 liter EFI V-8 engine	■	•	■	•
Automatic Overdrive transmission	•	•	•	■
Improved 2.3 liter OHC turbocharged engine with EFI, air-to-air intercooler and regular/premium fuel selection	•	•	•	•
5-speed manual overdrive transmission	•	•	•	•
Power rack and pinion steering	•	•	•	•
Power front disc/rear drum brakes	•	•	•	•
Power 4-wheel disc brakes with electronic anti-lock system (ABS)	•	•	•	•
Modified MacPherson strut front suspension with variable-rate springs and gas-pressurized struts	•	•	•	•
Four-bar link rear suspension with variable-rate springs and gas-pressurized shock absorbers	•	•	•	•
Handling suspension including Quadra-shock rear suspension	•	•	•	•
Special handling package including automatic ride control and Quadra-Shock rear suspension	•	•	•	•
Heavy-duty battery	■	•	■	•
Traction-Lok axle	•	•	•	•
Remote-control fuel door release	•	•	•	•
Dual-note, sport-tuned horn	•	•	•	•
Automatic parking brake release	•	•	•	•
P215/70R14 BSW all-season tires	•	•	•	•
P215HR/70x14 speed-rated handling tires	•	•	•	•
P225/60V/R16 BSW performance tires and unique aluminum wheels	•	•	•	•
<b>EXTERIOR</b>				
Dual aerodynamic halogen headlamps	•	•	•	•
Wide bodyside moldings	•	•	•	•
Luxury wheel covers	•	•	•	•
Styled road wheels	■	•	•	•
16" x 7" aluminum wheels	•	•	•	•
Cast aluminum wheels	■	■	■	■
Locking wire-style wheel covers	■	■	■	■
Unique front fascia with Hella™ fog lamps	•	•	•	•
Bodyside and decklid accent stripes	■	■	•	•
Bright windshield, side window and backlite moldings	•	•	•	•
Black bumper rub strips and extensions with bright insert (red insert with Turbo Coupe)	•	•	•	•
Black accents and moldings	•	•	•	•
Two-tone paint with tape stripes	■	■	■	■
Dual inter cooler hood scoops	•	•	•	•
Left-hand remote-control mirror	•	•	•	•
Dual remote-control electric mirrors	■	■	•	•
<b>INTERIOR</b>				
Reclining cloth split bench seats with console (vinyl optional)	•	•	•	•
Individual cloth seats with full console	■	•	•	•
Luxury cloth split bench seats in special sew style	•	•	•	•
Adjustable articulated sport seats	•	•	■	•
Air conditioning	•	•	•	•
Tinted glass	•	•	•	•
Safety belt reminder chime	•	•	•	•
Deep-well trunk with mini-spare tire	•	•	•	•
Luggage compartment light	•	•	•	•
16-ounce color-keyed cut-pile carpet	•	•	•	•
24-ounce luxury carpet	•	•	•	•

	Thunderbird Standard	Sport	LX	Turbo Coupe
Quartz electric clock	•	•	•	•
Electronic digital clock	■	•	•	•
Ashtray lights	•	•	•	•
Light Group (1)	■	•	•	•
Luxury door and quarter trim panels	•	•	•	•
Continuous color-keyed deluxe safety belts with comfort regulator feature	•	•	•	•
LCD speedometer/odometer/trip odometer	•	•	•	•
Electronic instrument cluster (See page 9)(2)	■	■	■	■
Systems sentry/diagnostic alert lights (See page 9)(2)	•	■	•	•
Full analog instrumentation, including tachometer with boost and overboost lights	•	•	•	•
Leather-wrapped steering wheel	■	•	•	•
"Soft feel" steering wheel	•	•	•	•
Tunnel-mounted shift with leather-wrapped handle and boot	•	•	•	•
Full console with covered storage compartment lid/armrest (3)	■	■	■	■
Electronic AM/FM stereo radio with 4 speakers (may be deleted for credit)	•	•	•	•
Electronic AM/FM stereo radio with 4 speakers and cassette tape player (4)	■	■	•	■
Premium Sound System (5)	■	■	■	■
Graphic equalizer	■	■	■	■
Illuminated Entry System	■	■	■	■
Power side windows	■	■	•	•
Interval windshield wipers	■	■	•	•
Speed control (4)	■	■	•	•
Tilt steering wheel (4)	■	■	•	•
Power Lock Group (4) (6)	■	■	•	•
Power driver's seat (4)	■	■	•	■
<b>Premium Luxury Package Includes:</b>				
Power antenna	■	■	■	■
Luxury Light/Convenience Group (7)	■	■	■	■
Electronic Equipment Group (8)	■	■	■	■
Dual power seats (9)	■	■	■	■
Front floor mats	■	■	■	■

(1) Includes dual beam map light, instrument panel courtesy lights and engine compartment light. (2) Available optionally as part of the Electronic Equipment Group. (3) Included with individual seats on standard model and with articulated sport seats on LX. (4) Included at no charge in Thunderbird Turbo Coupe Special Value Program. (5) Includes 6 premium speakers and a 4-channel amplifier that increases power from 20 to 80 watts. Included with graphic equalizer. (6) Includes power door locks, remote-control decklid release in glove box, remote-control fuel filler door release in glove box (standard with Turbo Coupe). (7) Includes cornering lamps, dual illuminated visor vanity mirrors (standard with LX), the illuminated entry system (standard with LX and available as a separate option), and the autolamp system (see page 18). (8) Includes Electronic Instrument Cluster, described on page 9 (except Turbo Coupe; standard on Sport), Keyless Entry System (described on page 18), and electronic climate control air conditioning. (9) Includes dual power recliners except on Turbo Coupe and optional articulated sport seats on LX.

## Colors & Trims

Interior Trim Colors					Thunderbird, Sport, and LX Exterior Paint Colors
Shadow Blue Taupé	Scarlet Red Taupé	Medium Grey Taupé	Panther/Clearcoat Sand Beige	Standard Beige	
					Black
X	X	X	X		Light Grey
X	X	X	X		Scarlet Red
		X	X		Sand Beige
X	X	X	X	X	Oxford White
					<b>Thunderbird, Sport, and LX Optional Clearcoat Metallic Colors</b>
X	X	X	X		Silver
X	X	X	X		Medium Grey
X	X	X	X		Medium Red
X		X			Silver Blue
	X				Dark Taupe
	X				Light Taupe
X		X		X	Dark Shadow Blue
		X	X		Driftwood
			X	X	Sandalwood
					<b>Turbo Coupe Colors</b>
X			X	X	Black
X	X		X	X	Oxford White
					<b>Turbo Coupe Optional Clearcoat Metallic Colors</b>
X	X		X		Silver
X	X		X		Medium Grey
X	X		X		Medium Red
X		X			Silver Blue
X		X			Dark Shadow Blue
		X	X		Driftwood

Some of these paint and trim colors are shown in this catalog. On the printed page, of course, colors are at best only representative of the originals. Your Ford Dealer can show you actual samples of the paint colors and trim materials presented above as well as Two-Tone paint combinations.



Black



Scarlet Red



Light Grey



Sand Beige



Oxford White



Silver  
Clearcoat Metallic



Medium Grey  
Clearcoat Metallic



Medium Red  
Clearcoat Metallic



Silver Blue  
Clearcoat Metallic



Dark Taupe  
Clearcoat Metallic



Light Taupe  
Clearcoat Metallic



Dark Shadow Blue  
Clearcoat Metallic



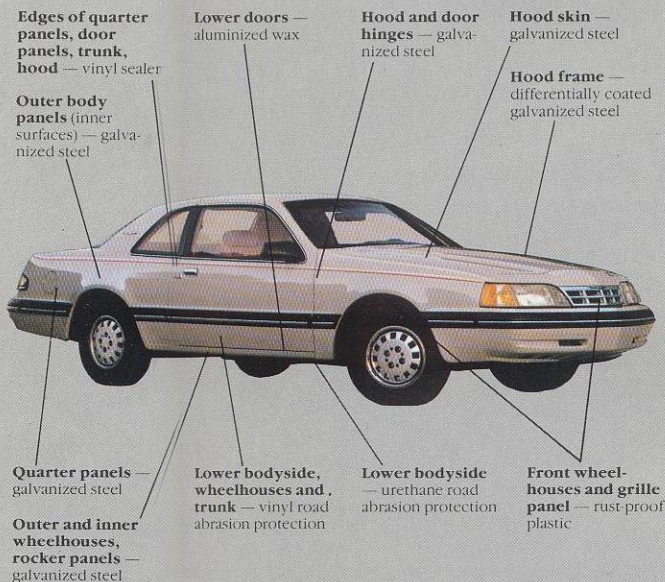
Driftwood  
Clearcoat Metallic



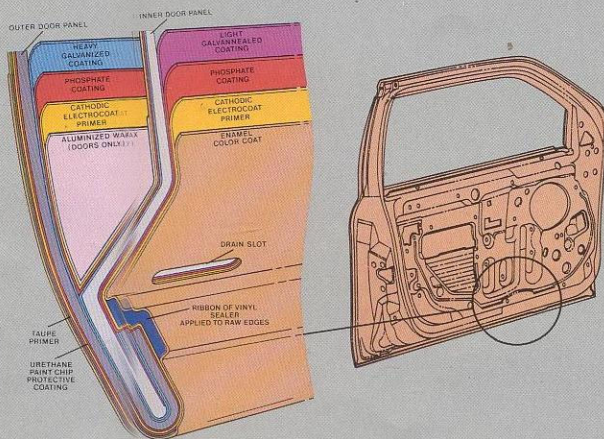
Sandalwood  
Clearcoat Metallic

## Special quality steps: corrosion protection

Ford takes tough measures to protect its cars against the damaging effects of corrosion. Galvanized steel is used for important underbody and structural parts. Pre-coated steel, featuring corrosion inhibitors, is also used in many body panels. Special treatments are applied to selected areas of the body structure. Some examples are shown below.



## Thunderbird corrosion protection measures



# Safety and Owner Benefits

## The Ford Quality Commitment

The Ford Quality Commitment is built on a basic and simple concept: Integrity. Integrity in the way we build our products, integrity in our dealerships' service and integrity in the treatment of our customers.

## Together we can save lives

Ford Motor Company strongly encourages all passengers to use their safety belts.

In all Ford cars, outboard front seat lap and shoulder belts have automatic retractors and comfort regulators. Outboard rear seat positions also have lap belts with retractors.

Ford urges the use of child and infant restraints, as required by law in all states. Ford's easy-to-install Tot-Guard (for children 20 to 50 pounds) and Infant Carrier (for children up to 20 pounds) are available at all Ford Dealers. If a child restraint requires a top-tether, Ford cars provide for attachment of an anchor at each rear outboard seating position.



## Ford Lifeguard Design Safety Features

### Vehicle operation

- Split service hydraulic brake system with warning light
- Corrosion-resistant brake lines
- Flash-to-pass headlamps
- Turn indicator with lane-changing signal feature
- Hazard warning flasher
- Backup lamps
- Parking lamps coupled with headlamps
- Side marker lamps
- High-mount stop lamp
- Two-speed windshield wipers
- Windshield washers
- Outside rearview mirror, driver's

- side
- Glare-reduced instrument panel, windshield wiper arms and windshield pillars
- Uniform transmission shift quadrant with safety starting switch (on all cars equipped with automatic transmission)
- Continuously variable control illumination intensity (instrument cluster lighting)
- Safety hood latch system
- Function-rated windshield defroster system
- Tamper-resistant (non-reversing) odometer
- Speedometer with highlighted 55 mph (on cars with analog speedometer)

### Occupant protection

- Safety-designed front end structure
- Safety-designed roof structure
- Steel guard rails in side doors
- Safety-designed door hinges and double yoke safety door latches
- Integral lap and shoulder belts with automatic retractors for occupants of front seats
- Safety belt fastening reminder warning light and buzzer for the driver's seat
- Lap belts for all rear seating positions with retractors for rear outboard occupants
- Energy-absorbing steering column and steering wheel
- Energy-absorbing armrests and safety-designed door handles
- Energy-absorbing instrument panel with padding for front passenger
- Energy-absorbing sun visors
- Energy-absorbing front seat back tops
- Self-locking seat back latches
- Head restraints for front occupants
- Safety glove box latch
- Inside yieldaway rearview mirror
- Impact-absorbing laminated safety glass windshield
- Flame-resistant interior materials
- Safety-designed coat hooks
- Safety-designed radio control knobs and push buttons

### Anti-theft

- Locking steering column with key warning buzzer (with "Park" interlock or push button for key release)
- Visible vehicle identification number



## A combination unmatched by any other American manufacturer: the three-year unlimited mileage powertrain warranty

Most powertrain warranties don't cover you for an unlimited number of miles. Those that do don't cover you for a full 3 years. Ours does both. It's a combination unmatched by any other American manufacturer. The warranty covers major powertrain components on 1987 Ford cars. It's limited and certain deductibles apply. Ask to see this warranty at your Ford Dealer.

## Scheduled maintenance

Here are some examples of scheduled maintenance intervals for the 1987 Thunderbird. For complete recommendations, refer to the Maintenance Schedule and Record Log.

Engine oil and filter change	each 7,500 miles or 6 months*
Spark plug change	each 30,000 miles**
Air filter replacement	each 30,000 miles
Engine coolant replacement	each 30,000 miles or 3 years

\*5,000 miles or 6 months with Turbo Coupe  
\*\*15,000 miles with Turbo Coupe

## Measurements

Wheelbase	104.2"
Length	202.1"
Height	53.4"
Width	71.1"
Front tread	58.1"
Rear tread	58.5"
Trunk volume (cu. ft.)	14.6
Fuel capacity (gal.)	21.1*
Curb weight (lb.)	3,133**
Passenger capacity	5

\*18.2 gallons with Turbo Coupe.  
\*\*Standard vehicle. Turbo Coupe 3,380 lb.

## 5-mile-per-hour bumpers

Bumper systems on Thunderbird are designed to protect lamps, cooling system, exhaust and other body components in the event of a minor impact. While some manufacturers equip their cars with bumpers that just meet the 2 1/2-mph federal stan-

dard, Ford equips Thunderbird and every other car it makes with bumpers designed to absorb impacts of 5-mph.



Participating Ford Dealers are now offering the Lifetime Service Guarantee, which guarantees their work on your Ford vehicle for as long as you own it. This means that the covered repair is paid for once — and never again. If it ever has to be fixed again, the repairing dealer will fix it free. Free parts. Free labor. Even if the car is kept a lifetime. It doesn't matter where it was purchased, or whether it's new or used; the work is still covered by the repairing dealer.

This limited warranty covers vehicles in normal use. Items not covered are routine maintenance parts, belts, hoses, sheet metal, and upholstery. Ask to see this guarantee when you visit your participating Ford Dealer.



The optional Ford Extended Service Plan covers major components on new Ford cars and light trucks for longer than the vehicle's basic warranty. The cost of this added protection is so moderate that it could pay for itself the first time you need it. Your Ford Dealer has full details.



Genuine Ford and Motorcraft original equipment replacement parts meet the same high standards as those installed in production. They are your best assurance of quality and long-term satisfaction.



Ford Motor Credit Company is interested in helping to fill the transportation needs of every qualified buyer of a Ford product. A participating dealer can arrange financing terms or a Red Carpet Lease® tailored to your circumstances. Ford Credit has offices conveniently located throughout the United States.

## Ford-paid repair programs after the warranty period

Sometimes Ford offers adjustment programs to pay all or part of the cost of certain repairs. These programs are intended to assist owners and are in addition to the warranty or to required recalls. Ask Ford or your dealer about such programs relating to your Ford or Lincoln-Mercury vehicle.

To get copies of any adjustment program for your vehicle or the vehicle of interest to you: Call Ford toll-free at 1-800-241-3673. Alaska/Hawaii call 1-800-241-3711 and in Georgia call 1-800-282-0959.

Or write Ford at:  
Ford Customer  
Information System  
Post Office Box 95427  
Atlanta, Georgia 30347

We'll need your name and address; year, make and model vehicle, as well as engine size; and whether you have a manual or automatic transmission.

## Technical service bulletins

All vehicles need repairs during their lifetime. Sometimes Ford issues technical service bulletins (TSBs) and easy-to-read explanations describing unusual engine or transmission conditions which may lead to costly repairs, the recommended repairs, and new repair procedures.

Often a repair now can prevent a more serious repair later. Ask Ford or your dealer for any such TSBs and explanations relating to your Ford or Lincoln-Mercury vehicle.

To get copies of these technical service bulletins and explanations for your vehicle or the vehicle of interest to you: Call Ford toll-free at 1-800-241-3673. Alaska/Hawaii call 1-800-241-3711 and in Georgia call 1-800-282-0959.

Or write Ford at:  
Ford Customer  
Information System  
Post Office Box 95427  
Atlanta, Georgia 30347

We'll need your name and address; year, make and model vehicle, as well as engine size; and whether you have a manual or automatic transmission.

## Options availability

Options shown or described in this catalog are available at extra cost and may be offered only in combination with other options or subject to additional ordering requirements or limitations.

## Product changes

Ford Division reserves the right to change product specifications at any time without incurring obligations.

## "Ask your Ford Dealer"

Following publication of this catalog, certain changes in standard equipment, options, prices and the like, or product delays, may have occurred which would not be included in these pages. Your Ford Dealer is your best source for up-to-date information.

## Buy or lease a new Thunderbird

Buy or lease a new Thunderbird

