

CONTENTS |

EXPLORER

EXTERIOR

INDEPENDENT REAR SUSPENSION

INTERIOR

PEACE OF MIND

COLOR AND TRIM

WHEELS AND ENGINES

MODELS

DIMENSIONS

FORD CREDIT



EXPLORER

EXPLORER | A NEW TERRITORY

The best souvenir: an extraordinary experience. Like the first time you made it down that black diamond slope. You still have the tattered trail map (it's framed now).

Breathe deeply. And remember: You got here in the completely redesigned 2002 Ford Explorer. Now more capable than ever, Explorer opens up new territory for you. It has higher ground clearance, and more generous angles of approach and departure to make it more capable off-road. The step-in height is lower, so you can get in and out more easily. The optional 3rd-row seat folds right into the floor – so loading cargo is easy. Loading passengers is easy, too, since Explorer offers the most 3rd-row head room and leg room in its class.



EXPLORER LIMITED 4X4 IN WHITE PEARL TRI-COAT METALLIC CLEARCOAT WITH SILVER BIRCH ACCENTS AND RUNNING BOARDS.



EXTERIOR |

A: STEP UP | WE LOWERED EXPLORER'S STEP-IN HEIGHT 1.7 INCHES, MADE THE DOORS LARGER AND INCREASED DRIVER'S-SEAT TRAVEL. EASIER TO GET INTO, EASIER TO LOAD UP, EASIER TO GET UP AND GO, ANYWHERE.

B: EARLY LIGHT | SECURITY APPROACH LAMPS ON THE UNDERSIDE OF BOTH SIDE MIRRORS, ACTIVATED BY THE KEY FOB'S UNLOCK BUTTON, BATHE THE GROUND AROUND THE FRONT DOORS IN LIGHT, SO YOU CAN AVOID PUDDLES OR POTENTIAL DANGERS NEAR THE VEHICLE. STANDARD ON XLT, EDDIE BAUER AND LIMITED.

C: ON THE LEVEL | WE LOWERED THE REAR LIFTOVER TO AN AVERAGE SHOPPING CART HEIGHT FOR EASIER LOADING OF A WEEK'S GROCERIES OR A WEEKEND'S GEAR.

D: HITCH BIKE | THE QUARTER-ROC® BIKE CARRIER ACCESSORY* FITS INTO THE STANDARD HITCH MOUNT AND HOLDS ONE OR TWO BIKES. NO NEED TO REMOVE THE CARRIER TO ACCESS YOUR CARGO AREA EITHER — JUST SWING THE RACK DOWN AND OPEN THE GATE.

E: BACKUP BACKUP | THE OPTIONAL REVERSE SENSING SYSTEM ALERTS YOU TO CERTAIN OBJECTS BEHIND THE VEHICLE WITH A SERIES OF BEEPS TO HELP YOU GAUGE YOUR DISTANCE.

*See dealer to purchase.



EXPLORER EDDIE BAUER 4X4 IN BLACK CLEARCOAT WITH COLOR-KEYED RUNNING BOARDS.

The completely redesigned 2002 Explorer unites utility and agility with advanced driving dynamics systems.

THE NEW INDEPENDENT REAR SUSPENSION makes the ride smoother and the performance tighter and more responsive on-road and off-road. With its innovative (and patented) “porthole frame” design, the suspension system absorbs bumps and potholes to smooth out your ride. That feels good. So does this: The system also helps optimize tire-to-pavement contact, and communicates important steering feedback to the driver, which both improve control.

EXPLORER’S ADVANCETRAC™ system helps you maintain better control and enhances stability. The system’s sensors monitor steering, throttle, and brake inputs, as well as vehicle motion and speed. Then, in certain understeer or oversteer situations, AdvanceTrac applies appropriate braking, traction control, and throttle adjustments to correct vehicle direction to follow the driver’s steering input. Available on all Explorer models equipped with 4.6L V8 engines.

EXPLORER’S CONTROL TRAC® push-button 4-wheel-drive system fine-tunes 4x4 performance to diverse road and off-road conditions, making it smooth and responsive. System sensors measure driveshaft speeds and throttle positions to determine the driver’s intent and current traction conditions. Then it optimizes torque transfer to each axle to ensure traction. Control Trac even takes into account variables like differences in tire pressure.



EXPLORER XLT WITH XLT SPORT GROUP IN MEDIUM WEDGEWOOD BLUE METALLIC CLEARCOAT.

The buttery-rich good looks of Explorer's Eddie Bauer interior are obvious. What isn't so obvious is the fact that it – and every Explorer – is more convenient and offers even more useable room than ever before. You'll find storage compartments throughout, even beneath the cargo floor. An optional 3rd-row seat provides flexible seating for seven and folds into the floor when you don't need it. And a new 40/20/40 middle seat (standard with the 3rd-row seat) folds up for easy access and folds down to let you load your gear. Where'd we get the extra space? From that innovative independent rear suspension, which allowed us to lower the rear floor for more interior space. If that sounds good, listen to this: The new Explorer features a stiffer body shell with a fully boxed frame designed for quieter operation and a more soothing ride.



EXPLORER EDDIE BAUER WITH MEDIUM PARCHMENT LEATHER SEATING SURFACES AND OPTIONAL 3RD-ROW SEAT.



KEEP CHAOS AT BAY AND MESSES AWAY WITH THE CARGO ORGANIZER ACCESSORY*. THE COMPARTMENT DIVIDERS ARE REMOVABLE AND ADJUSTABLE, AND THE ORGANIZER EASILY INSTALLS BEHIND EITHER THE 2ND- OR 3RD-ROW SEATS, WITH NO TOOLS.

*See dealer to purchase.





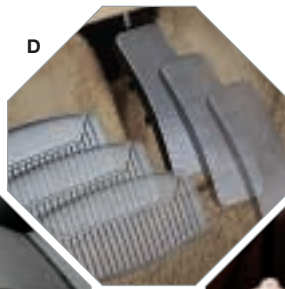
A



B



C



D



E



F



EXPLORER LIMITED WITH MIDNIGHT GREY LEATHER SEATING SURFACES.

INTERIOR |

A: HIGH NOTE | THE OPTIONAL IN-DASH 6-DISC CD SOUND SYSTEM DRIVES 7 SPEAKERS WITH 290 WATTS OF TOTAL PEAK POWER. IT'S SPECIALLY EQUALIZED FOR EXPLORER'S INTERIOR TO DELIVER THE BEST POSSIBLE SOUND RESPONSE. STANDARD ON EDDIE BAUER AND LIMITED.

B: RUN HOT & COLD | DUAL-ZONE CLIMATE CONTROLS, STANDARD ON EDDIE BAUER AND LIMITED, ENABLE FRONT OCCUPANTS TO MAINTAIN THEIR INDIVIDUAL COMFORT RANGES. THE STEERING WHEEL ALSO HAS A SET OF CONTROLS.

C: HANDS REACH | THE HIGH SERIES FLOOR CONSOLE PROVIDES A DEEP COMPARTMENT EQUIPPED WITH CUPHOLDERS, REAR CLIMATE CONTROLS AND A POWER POINT. STANDARD ON XLT, EDDIE BAUER AND LIMITED.

D: PEDAL POWER | ACCELERATOR AND BRAKE PEDALS POWER-ADJUST FOR DRIVER COMFORT. STANDARD ON EDDIE BAUER/LIMITED, OPTIONAL ON XLT. EXPLORER MODELS WITH ADVANCETRAC ALSO FEATURE BRAKE ASSIST, WHICH HELPS COMPLETE BRAKING ACTION IN EMERGENCY SITUATIONS.

E: FAMILY TIES | TOP TETHER ANCHORS FOR CHILD SAFETY SEATS ARE IN 2ND-ROW AND OPTIONAL 3RD-ROW SEATING POSITIONS. THE ANCHORS ARE IN THE FLOOR PAN RATHER THAN THE SEAT.

F: STOWAWAY | CONCEALED STORAGE SPACE UNDER THE CARGO FLOOR GIVES YOU MORE ROOM FOR SMALL STOWABLES.

We've built one of the most comprehensive safety and security packages available into the new Explorer. In fact, in its 40-mph frontal offset crash test, the 2002 Explorer outperformed all other major competitors[†] in its class, a performance that garnered it a "Best Pick" from the Insurance Institute for Highway Safety.*

PERSONAL SAFETY SYSTEM™

The Ford Personal Safety System adjusts occupant protection systems to help match protection to the situation. In an accident, the system quickly determines accident severity and certain occupant conditions like weight, safety belt use and seat position. Then, safety belt pretensioners tighten the front belts; load-limiting retractors dynamically regulate belt slack; and the system determines whether the dual stage front airbags should be deployed, and at which of two energy levels.

SAFETY CANOPY™ SYSTEM

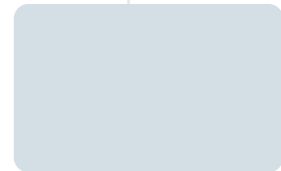
The 2002 Explorer takes safety to an entirely new level with its industry-first, innovative Safety Canopy System. *Motor Trend* called it "the ultimate in SUV airbags." In certain side-impact collisions or certain rollover events, this optional system deploys side curtain airbags. Covering approximately two-thirds of the 1st- and 2nd-row windows, these airbags remain inflated for a longer duration, providing enhanced head protection and helping to keep occupants in the vehicle.

EVEN BRAKES

Explorer's power 4-wheel-disc, anti-lock braking system helps maintain driver control in hard braking situations. They're standard on every Explorer model.

[†]Includes Chevrolet TrailBlazer/Blazer, Jeep Grand Cherokee, Dodge Durango, GMC Envoy and Toyota 4Runner. *Models built after 10/29/01.

[‡]Always wear your safety belt and secure children in the rear seat.



EXPLORER LIMITED 4X4 IN WHITE PEARL TRI-COAT METALLIC CLEARCOAT, SHOWN WITH SKI RACK ACCESSORY.

COLORS |



OXFORD WHITE



WHITE PEARL TRI-COAT METALLIC



SILVER BIRCH METALLIC



MINERAL GREY METALLIC



HARVEST GOLD METALLIC



TOREADOR RED METALLIC



ESTATE GREEN METALLIC



ASPEN GREEN METALLIC



MEDIUM WEDGEWOOD BLUE METALLIC



TRUE BLUE METALLIC

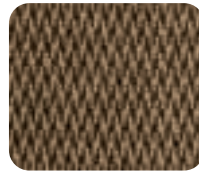


BLACK

SEATS+FABRICS |



CLOTH LOW-BACK BUCKET SEATS IN MEDIUM PARCHMENT OR GRAPHITE. STANDARD ON XLS.



CLOTH LOW-BACK BUCKET SEATS IN MEDIUM PARCHMENT OR GRAPHITE. STANDARD ON XLT. ALSO AVAILABLE WITH LEATHER SEATING SURFACES ON XLT.



LUXURY BUCKET SEATS WITH LEATHER SEATING SURFACES IN MEDIUM PARCHMENT. STANDARD ON EDDIE BAUER.



LUXURY BUCKET SEATS WITH LEATHER SEATING SURFACES IN MEDIUM PARCHMENT OR MIDNIGHT GREY. STANDARD ON LIMITED.

XLS

COLOR+TRIM

	GRAPHITE	MEDIUM PARCHMENT
OXFORD WHITE	*	*
SILVER BIRCH METALLIC	*	
MINERAL GREY METALLIC		*
HARVEST GOLD METALLIC		*
TOREADOR RED METALLIC	*	*
ASPEN GREEN METALLIC		*
TRUE BLUE METALLIC	*	*
BLACK	*	*

XLT

COLOR+TRIM

	GRAPHITE	MEDIUM PARCHMENT
OXFORD WHITE	*	*
SILVER BIRCH METALLIC	*	
MINERAL GREY METALLIC		*
HARVEST GOLD METALLIC		*
TOREADOR RED METALLIC	*	*
ESTATE GREEN METALLIC		*
ASPEN GREEN METALLIC		*
MEDIUM WEDGEWOOD BLUE METALLIC	*	*
TRUE BLUE METALLIC	*	*
BLACK	*	*

EDDIE BAUER

COLOR+TRIM

	MEDIUM PARCHMENT
OXFORD WHITE	*
TOREADOR RED METALLIC	*
ESTATE GREEN METALLIC	*
ASPEN GREEN METALLIC	*
MEDIUM WEDGEWOOD BLUE METALLIC	*
TRUE BLUE METALLIC	*
BLACK	*

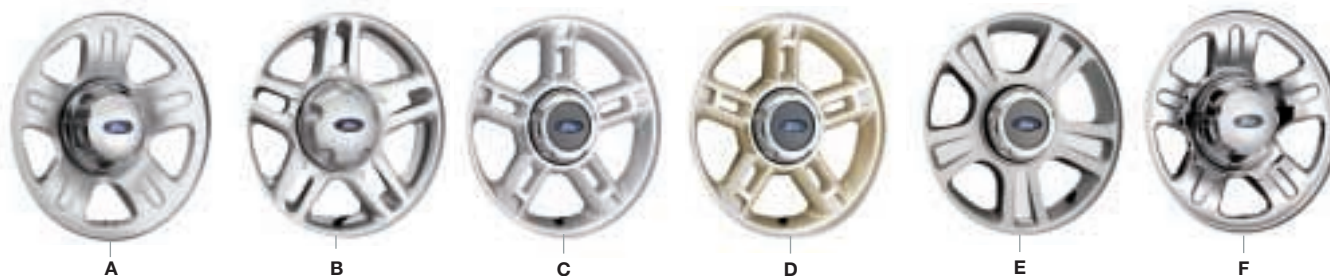
LIMITED

COLOR+TRIM

	MIDNIGHT GREY	MEDIUM PARCHMENT
WHITE PEARL TRI-COAT METALLIC	*	
SILVER BIRCH METALLIC	*	
MINERAL GREY METALLIC	*	*
BLACK	*	*

FORD USES CLEARCOAT PAINT FOR BEAUTY AND PROTECTION. COLORS SHOWN ARE REPRESENTATIVE ONLY. SEE YOUR DEALER FOR ACTUAL PAINT/TRIM OPTIONS. VEHICLES SHOWN MAY CONTAIN OPTIONAL EQUIPMENT.

WHEELS |



A | 16" FULL-FACE STEEL WHEELS. STANDARD ON XLS.

B | 16" PAINTED CAST ALUMINUM WHEELS. STANDARD ON XLT AND INCLUDED ON XLS WITH SPORT GROUP.

C | 16" PAINTED CAST ALUMINUM WHEELS. STANDARD ON XLT WITH 3RD-ROW SEAT OR TRAILER TOW PACKAGE.

D | 16" SATIN-NICKEL CAST ALUMINUM WHEELS. STANDARD ON EDDIE BAUER.

E | 16" LIMITED CAST ALUMINUM WHEELS. STANDARD ON LIMITED.

F | 16" CHROME STEEL WHEELS. OPTIONAL ON EDDIE BAUER AND LIMITED.

ENGINE POWER |



A: CLEAN POWER | EXPLORER'S STANDARD 4.0L SOHC V6 CAN HAUL UP TO 5940 POUNDS (PROPERLY EQUIPPED). AND THE EXPLORER IS A CERTIFIED LOW-EMISSIONS VEHICLE. ALL THIS WHILE DELIVERING 210 HP @ 5100 RPM.



B: FOR THE STRONG HAUL | THE AVAILABLE ALL-ALUMINUM, 4.6L SOHC V8 ENGINE DELIVERS 239 HP @ 4750 RPM — ENOUGH POWER TO PULL UP TO 7300 POUNDS (PROPERLY EQUIPPED).

Standard Equipment on Explorer 4x2 and 4x4:**Mechanical**

- 4.0L SOHC V6 Engine
- 5-Speed Manual Transmission
- Rear-Wheel Drive (4x2)
- 4WD Control Trac® (4x4)
- 16" Full Face Steel Wheels with P235/70R16 OWL All-Season Tires
- Coil Spring Front Suspension
- Independent Rear Suspension
- Heavy-Duty Gas Shock Absorbers
- Power 4-Wheel Disc Brakes
- Power Steering
- Stabilizer Bars (Front and Rear)
- Trailer Hitch Receiver (Class II, 3500-lb. Capacity, Includes 4-Pin Wiring Harness)

Safety/Security

- Anti-Lock Braking System
- Battery Saver
- Rear Door Child Safety Locks
- Driver's Seat Safety Belt Minder™
- Child Safety Seat Lower Tether Anchors
- Personal Safety System™
- Safety Belts with Adjustable-Height Shoulder Belts (1st and 2nd Rows)
- SecuriLock™ Coded Ignition Key Anti-Theft System
- Side Intrusion Door Beams

Interior

- Front Cloth Captain's Chairs
- 2nd-Row 60/40 Split-Bench Seat

- Air Conditioning
 - AM/FM Stereo/Cassette with Clock
 - Autolock
 - Cargo Area Dome Light
 - Cargo Area Interior Lock/Unlock Button
 - Cargo Management System
 - Floor Console with Storage Bin, Cupholders and Power Point
 - Assist Handles
 - Liftglass Remote Release Switch (Key Fob)
 - Load Floor Tie-Down Hooks
 - Map Pockets with 20-oz. Beverage Holders
 - Power Windows, Door Locks, Mirrors
 - Remote Keyless Entry System
 - Speed Control
 - Tilt Steering
- Exterior**
- 22.5-Gallon Fuel Tank
 - Bodyside Moldings – Painted
 - Enhanced Privacy Glass – Rear Quarter, Rear Doors and Liftgate Windows
 - Liftgate with Flip-Open Rear Window
 - Roof Rails
 - Solar Tinted Windshield/Front Door Windows
 - Underbody-Mount Full-Size Steel Spare
 - Windshield Wipers/Washers – Front: Speed-Sensitive, Dual Intermittent; Rear Dual Intermittent with Defroster

Following publication of the catalog, certain changes in standard equipment, options and the like, or product delays, may have occurred which would not be included in these pages. Your Ford Dealer is the best source for up-to-date information. Ford Division reserves the right to change product specifications at any time without incurring obligations. Features shown may be offered only in combination with other options or subject to additional ordering requirements or limitations. Competitive comparisons based on publicly available information at time of printing.

Trailer Towing Prep Package: Includes Class III Trailer Hitch Receiver with 7-Pin Wiring Harness and 3.73 Limited Slip Rear Axle. Recommended for Towing Trailers Over 3500 Lbs.

Explorer XLS
Includes all of the standard Explorer features.

- Options**
- 4x4 Control Trac®
 - 5-Speed Automatic Transmission
 - P245/70R16 OWL All-Season Tires
 - Safety Canopy™ System
 - Trailer Towing Prep Package
- **XLS Sport Group** – 16" Cast Aluminum Wheels, AM/FM Stereo (60 Watt) with Clock/In-Dash CD Player/4 Speakers, High Series Floor Console with Front/Rear Power Points and Climate Controls, Floor Mats (Front/Rear), Side Step Bars, Wheel-Lip Moldings



EXPLORER XLS



EXPLORER XLS SPORT



EXPLORER XLT



EXPLORER XLT SPORT



EXPLORER EDDIE BAUER



EXPLORER LIMITED

Explorer XLT

- Includes all of the standard XLS features, plus:
- 5-Speed Automatic Transmission
 - 16" Painted Cast Aluminum Wheels
 - AM/FM Stereo/Clock with Single CD/Cassette Player
 - Automatic Headlamps
 - Auto-Dimming Mirror
 - Black Leather-Wrapped Steering Wheel
 - Bodyside Cladding and Wheel-Lip Moldings – Molded-in Color
 - Cloth Sport Front Bucket Seats with 6-Way Power Driver's Seat and Manual Driver/Front Passenger Lumbar Support
 - Driver Door Lock Keypad
 - Floor Mats (Front and Rear)
 - Fog Lamps
 - Front Overhead Console with Map/Dome Lights, Ticket Clip, Sunglasses Holder and Garage Door Opener Bin
 - High Series Floor Console with Power Points and Rear Heat Vents/AC Controls
 - Illuminated Visor Vanity Mirrors
 - Outside Temperature and Compass Display
 - Retractable Cargo Area Cover and Cargo Shade
 - Roof Rails with Crossbars
 - Security Approach Lamps (Side Mirror Mounted)

- Options**
- 4x4 Control Trac
 - 4.6L SOHC V8 Engine
 - 3rd-Row Seat
 - 80-Watt AM/FM Stereo with In-Dash 6-Disc CD Player
 - AdvanceTrac™ (with V8 Only)
 - AM/FM Premium Stereo with Cassette and In-Dash CD Player
 - Auxiliary Rear AC and Heater
 - Sport Bucket Seats with Leather Seating Surfaces (Vinyl on Optional 3rd-Row Seat)
 - Power Adjustable Pedals
 - Power Moonroof
 - Running Boards – Black
 - Reverse Sensing System
 - Safety Canopy System
 - Trailer Towing Prep Package (included in AdvanceTrac)
 - **XLT Sport Group** – 17" 5-Spoke Machined-Aluminum Wheels, P245/65R17 All-Terrain OWL Tires, Platinum Gloss Bodyside Cladding and Wheel-Lip Moldings, Platinum Gloss Side Step Bars, Platinum Gloss Two-Tone Front and Rear Fascias

Explorer Eddie Bauer

- Includes all of the standard XLT features, plus:
- 16" Satin-Nickel Cast Aluminum Wheels
 - P245/70R16 OWL All-Season Tires
 - 290-Watt AM/FM Stereo/Clock with In-Dash 6-Disc CD Player
 - Bodyside Cladding and Wheel-Lip Moldings – Painted Arizona Beige
 - Color-Keyed Leather-Wrapped Steering Wheel with Audio and Climate Controls
 - Dual Electronic Automatic Temperature Control
 - Heated Exterior Mirrors
 - Heated Front Bucket Seats with Leather Seating Surfaces and 6-Way Power Passenger Seat/Lumbar Support
 - Homelink®
 - Memory Driver's Seat
 - Message Center
 - Power Adjustable Pedals with Memory
 - Running Boards – Color-Keyed
 - Tilt Steering Wheel

- Options**
- 4x4 Control Trac
 - 4.6L SOHC V8 Engine
 - 3rd-Row Seat (Vinyl)
 - 16" Chrome Steel Wheels
 - AdvanceTrac (with V8 Only)
 - Power Moonroof
 - Rear Auxiliary AC and Heater
 - Reverse Sensing System
 - Safety Canopy System
 - Trailer Towing Prep Package (included in AdvanceTrac)

Explorer Limited

- Includes all of the standard Eddie Bauer features, plus:
- 16" Limited Cast Aluminum Wheels
 - Bodyside Cladding and Wheel-Lip Moldings – Monochromatic
 - (Except Tri-Coat White with Silver Birch Accents)
 - Luxury Front Bucket Seats with Leather Seating Surfaces

- Options**
- 4x4 Control Trac
 - 4.6L SOHC V8 Engine
 - 3rd-Row Seat (Vinyl)
 - 16" Chrome Steel Wheels
 - P245/70R16 BSW All-Season Tires
 - AdvanceTrac (with V8 Only)
 - Power Moonroof
 - Rear Auxiliary AC and Heater
 - Reverse Sensing System
 - Safety Canopy System
 - Trailer Towing Prep Package (included in AdvanceTrac)

VEHICLE DIMENSIONS |

A	OVERALL LENGTH	189.5"
B	WHEELBASE	113.7"
C	OVERHANG FRONT	31.7"
D	REAR	44.1"
E	OVERALL WIDTH	72.1"
F	HEIGHT (EMPTY, INCLUDES ROOF RACK WHERE APPLICABLE)	71.4"
G	GROUND CLEARANCE (EMPTY)	8.5"
H	LOAD FLOOR HEIGHT (EMPTY)	30.6"
I	RAMP BREAKOVER ANGLE (EMPTY)	18.2°
J	ANGLE OF DEPARTURE	23.6°
K	ANGLE OF APPROACH	31.0°
	SEATING (MAXIMUM)	7

MAXIMUM TRAILER WEIGHT |

ENGINE	AXLE RATIO	EXPLORER 4x2 • 4x4
4.0L SOHC V6 5-SPD MANUAL	3.73	2700 • 2500
4.0L SOHC V6 5-SPD AUTOMATIC	3.55	3500* • 3500*
	3.73	5940 • 5500
4.6L V8 4-SPD AUTOMATIC	3.55	3500* • 3500*
	3.73	7300 • 7000

*With Class II Trailer Towing Group.

POWERTRAIN PERFORMANCE |

ENGINE	HORSEPOWER	TORQUE
4.0L V6 5-SPEED MANUAL/ AUTOMATIC	210 @ 5100	254 @ 3700
4.6L V8 AUTOMATIC	239 @ 4750	282 @ 4000

INTERIOR DIMENSIONS |

	5-PASSENGER • 7-PASSENGER
FIRST ROW	
HEAD ROOM	39.9"
SHOULDER ROOM	59.1"
HIP ROOM	55.0"
LEG ROOM	42.4"
SECOND ROW	
HEAD ROOM	38.9"
SHOULDER ROOM	58.9"
HIP ROOM	54.3"
LEG ROOM	37.2"
THIRD ROW	
HEAD ROOM	39.0"
SHOULDER ROOM	52.4"
HIP ROOM	45.4"
LEG ROOM	34.8"
MAXIMUM CARGO VOLUME* (CU. FT.)	88.0 • 81.7
BEHIND 2ND ROW (CU. FT.)	46.6 • 44.5
BEHIND 3RD ROW (CU. FT.)	– • 13.8

* WITH 3RD-ROW SEATS REMOVED OR FOLDED (WHERE APPLICABLE) AND 2ND-ROW SEATS FOLDED OR FLIPPED DOWN.

Ford Credit's Red Carpet Lease

Many lease managers have completed many hours of training in a Red Carpet Lease program designed to make us the best in the business. We think you'll find a Red Carpet Lease is the best way to lease.

To get details on various financing options available on your new Ford vehicle, please visit our website at **www.fordcredit.com**. Doing so can give you a head start before talking to your Ford Dealer about financing your new Ford vehicle.

Under the New Vehicle Limited Warranty, you'll receive bumper-to-bumper no-deductible coverage on your new Ford vehicle for 3 years/36,000 miles. You'll also receive unlimited-mileage, no-deductible corrosion perforation coverage for five years. Ask your Ford Dealer for a copy of this warranty.

During its 3-year/36,000-mile limited warranty period, every new Ford vehicle includes the assurance and support of a 24-hour emergency Roadside Assistance program. Roadside Assistance includes such services as fuel delivery, tire changes, jump starts, and help when you are locked out of your vehicle. Ask your Ford Dealer for complete details about this program.

