

WWW.HILLERFORD.COM



EXCURSION
Built for the road ahead.









HILLER FORD

HERE IS THE INFORMATION YOU REQUESTED.

AVAILABLE INCENTIVES ON FORD EXCURSION

Listed below are just a few of the current available Ford vehicle offers and incentives in your area. For details on these and other great offers, contact your Ford dealer directly.

2005 RETAIL OFFERS FOR ZIP CODE: 53132													
OFFER DATES/VALUE	COMBINABLE CASH OFFERS		-OR-	CASH COMBINED WITH APR OFFERS				-OR-	APR ONLY OFFERS				
VALID DATES: OFFER VALUE:	CASH BACK* 	FORD CREDIT BONUS CASH**		FORD CREDIT BONUS CASH** 	SPECIAL FINANCING RATES					SPECIAL FINANCING RATES ONLY			
					36 mo.	48 mo.	60 mo.	72 mo.		36 mo.	48 mo.	60 mo.	72 mo.
Excursion(Excl. 6.0L)													
Valid Dates:	05/03-06/30 	04/05-05/31	-OR-	04/05-05/31 	04/05-06/30				-OR-	04/05-06/30			
Offer Value:	\$2500	\$1000		\$1000	2.9%	3.9%	4.9%			1.9%	2.9%	3.9%	5.9%
Excursion 6.0L													
Valid Dates:	04/05-06/30 	04/05-05/31	-OR-	04/05-05/31 	04/05-06/30				-OR-	04/05-06/30			
Offer Value:	\$1000	\$1000			3.9%	4.9%	5.9%			2.9%	3.9%	4.9%	6.9%

2005 LEASE OFFERS FOR ZIP CODE: 53132				
APPLICABLE MODEL	OFFER DATES/VALUE	COMBINABLE CASH OFFERS		
MODEL NAME	VALID DATES: OFFER VALUE:	RCL CASH*† 		FORD CREDIT BONUS CASH**
Excursion(Excl. 6.0L)	Valid Dates: Offer Value:	05/03-06/30 \$2500		04/05-05/31 \$1000
Excursion 6.0L	Valid Dates: Offer Value:	04/05-06/30 \$1000		04/05-05/31 \$1000

* Not all buyers will qualify for Ford Credit financing. Please use the chart below to determine the monthly charge per \$1000 financed regardless of down payment. National incentives are effective on retail deliveries from dealer stock through May 31, 2005 but subject to change. A combined customer cash reduced financing rate option is available on most models. Regional programs may vary.

† Not all lessees qualify for Ford Credit RCL. Some payments higher, some lower. Residency restrictions apply. Take new retail delivery from dealer stock by May 31, 2005.

** Take new retail delivery from dealer stock by May 31, 2005. See dealer for complete details.

*** When financed through Ford Credit. Not all buyers will qualify for Ford Credit financing. Take new retail delivery from dealer stock by May 31, 2005. See dealer for qualifications and complete details. Ford Credit Bonus Cash is compatible with Ford Credit Financing Offer.

EQUIPPED FOR THE WEEKEND AND BEYOND ...

Need capability with your luxury? Boasting the most cargo space of any SUV, 11,000 lbs. of towing power,* plus a range of best- and first-in-class** amenities, Excursion is the ultimate antidote to “Stay at Home Syndrome.” First, there’s the cavernous interior that comfortably seats up to nine passengers. And the class-leading 48.0 cubic feet of cargo space behind the third-row bench alone. Next, there are the luxury features, like the available Rear Seat DVD Entertainment System with a seven-inch LCD color screen, remote control and wireless headphones. Or the refined two-tone, leather-trimmed interior that comes standard on Eddie Bauer.

And that’s only the half of it. Under the hood, Excursion comes equipped with one of three powerful engines: the standard 5.4L Triton® V8, available 6.8L Triton® V10 and available 6.0L Power Stroke® V8 Turbo Diesel engine. And when you need to conquer rugged trails or slippery back roads, Excursion offers an available 4x4 system with electronic shift-on-the-fly technology. The system lets you choose between three settings: regular 2WD, 4x4 HIGH for added traction and 4x4 LOW for low-speed traction and maximized grip.



Excursion XLT 4x4

*When properly equipped. **Heavy-duty wagons class.



1. The 6.0L Power Stroke® V8 Turbo Diesel engine cranks out 325 hp and a class-leading* 560 lb.-ft. of torque.
2. It's all within your reach. Excursion's overhead console includes storage, auxiliary climate control and front map lights.
3. Redundant controls on Excursion Limited's leather-wrapped steering wheel (available on Eddie Bauer with Eddie Bauer Premier Package) let you adjust audio, fan and temperature settings without taking your hand off the wheel.
4. Is there an echo in here? "Cavernous" is a great way to describe Excursion's best-in-class interior space, with seating for up to nine and plenty of room for cargo too.
5. Power trailer tow mirrors let you keep your load in view, while the integrated turn signals and clearance lights offer extra security. A special heated setting maintains a clear line of sight.

*Heavy-duty wagons class.



Excursion Limited 4x4

HEAVY-DUTY POWERHOUSE.

Need heavy-duty towing power? Look no further. Excursion's standard Heavy-Duty Trailer Tow Package with Class IV hitch receiver can haul up to a massive 11,000 lbs.* Bring on the motorboat, horse trailer or weekend toys – Excursion can handle it all. Plus, the available power trailer tow mirrors let you keep an eye on what you're hauling.

It all starts under the hood – with Excursion's three powerful engine choices. The standard 5.4L Triton® V8 and available 6.8L Triton® V10 generate hefty horsepower and torque. And Excursion is the only vehicle in its class** to offer a diesel engine – the available 6.0L Power Stroke® V8 Turbo Diesel engine – that delivers best-in-class 560 lb.-ft. of torque. Work or play, Excursion is prepared for just about anything.

*When properly equipped.

**Heavy-duty wagons class.

FORD EXCURSION MODEL LINEUP

EXCURSION XLS



Large and in charge with space for cargo and comfort for people.

- Front 40/20/40 split bench seat with driver and passenger manual lumbar
- Premium AM/FM dual-media stereo, cassette and single CD player
- Power windows and locks, remote keyless entry, keyless entry keypad and dual power heated mirrors
- Black running boards and roof rack

Price: **\$38,350***

EPA: +

+ NA

EXCURSION XLT



An SUV leader by a comfortable measure.

- Front captain's chairs with 6-way power driver and passenger seats and manual lumbar
- Front floor console with storage and 4 cupholders
- Autolamp on/off delay system
- Rear seat audio controls

Price: **\$39,340***

EPA: +

+ NA

EXCURSION EDDIE BAUER



The name says it all. Sportsmen belong here.

- Dual front Captain's Chairs with 6-way power driver and passenger seats, manual lumbar and Premium two-tone leather seating surfaces.
- Electronic Automatic Temperature Control (EATC).
- Power adjustable pedals.
- Reverse Sensing System

Price: **\$42,425***

EPA: +

+ NA

EXCURSION LIMITED



Luxury and style. This Excursion has it all.

- Dual heated front Captain's Chairs with 6-way power driver and passenger seats and Premium Leather seating surfaces with Limited logo.
- Memory feature – includes driver's seat, outside mirrors and power adjustable pedals
- Premium AM/FM stereo with 6-disc in-dash CD changer
- Deluxe steering wheel with auxiliary A/C and audio controls

Price: **\$43,750***

EPA: +

+ NA

* Starting Manufacturing Retail Price, excluding taxes, title, and registration fees. Optional equipment not included.

**EPA estimated city/highway mpg based on base engine/transmission configuration.

FORD EXCURSION VS. CHEVROLET SUBURBAN

The ultimate blend of power and luxury, Excursion was built for any road you choose. Now see how Excursion stacks up against the Chevrolet Suburban. For even more comparisons, visit www.fordvehicles.com.

Best-in-class* interior room.

The most cargo space of any SUV.

SPECIFICATIONS	2005 Ford Excursion 4x4 Limited 6.0L V8 Diesel	2005 Chevrolet Suburban 2500 4WD 6.0L V8
Standard Seating	8	9
Automatic Climate Control	Standard	Optional
AM/FM Radio	Standard	Standard
Cassette Player	Optional	Standard
6-Disc CD Changer	Standard	Optional
Power Windows	Standard	Standard
Power Door Locks	Standard	Standard
Diesel Engine	Standard	Not Available
Automatic Transmission	Standard	Standard
4-Wheel ABS Brakes	Standard	Standard
Horsepower@RPM	325@3300	335@5200
Torque@RPM	560@2000	375@4000
Brakes (rear)	Disc	Disc
Wheelbase (in.)	137.1	130
Front Head Room (in.)	41.0	40.7
Front Leg Room (in.)	42.3	41.3
Rear Head Room, Row 2 (in.)	41.1	39
Rear Leg Room, Row 2 (in.)	40.5	39.1
Rear Head Room, Row 3 (in.)	38.6	38.6
Rear Leg Room, Row 3 (in.)	39	36.1



© Automotive Information Center™ August 2004. All Rights Reserved. This information is supplied for personal use only and may not be used for any commercial purpose whatsoever without the express written consent of Automotive Information Center. Automotive Information Center™ makes no guarantee or warranty, either express or implied, including without limitation any warranty of accuracy, merchantability, or fitness for particular purpose, with respect to the data presented here.



Excursion Limited 4x4



BIG LUXURY IN THE LITTLE DETAILS.

Excursion's interior luxury isn't just about roominess. You'll discover it in thoughtful details like the power adjustable pedals that let you find your most comfortable driving position (standard on Eddie Bauer and Limited, available on XLT and XLS). And the available first-in-class* Rear Seat DVD Entertainment System that makes even long rides fun. Is there a chill in the air? Heated front seats, standard on Limited and available on Eddie Bauer, offer fast comfort on those cold mornings. Plus, the class-exclusive Tri-Panel Door System™ ensures convenient access to cargo.

*Heavy-duty wagons class.



FEATURED EXCURSION SPECIFICATIONS

INTERIOR FEATURES - SEATING	XLS	XLT	Eddie Bauer	Limited
1st-row 40/20/40 split bench cloth with driver and passenger side manual lumbar	S	-	-	-
Captains chairs with 6-way power driver and passenger seat and manual lumbar	-	S	-	-
Front captain's chairs w/premium two-tone leather seating surfaces and 6-way power driver/passenger seat with manual lumbar	-	-	S	-
Front captain's chairs w/premium leather seating surfaces and logo, memory driver's seat, and 6-way power, heated driver/passenger seats with manual lumbar	-	-	-	S
Driver's side memory seat (available on Eddie Bauer with Eddie Bauer Premier Group)	-	-	O	S
2nd-row 60/40 tip/slide split bench with recline feature and center armrest	S	S	S	S
3rd-row removable folding bench	S	S	S	S
Head restraints on outboard positions (1st and 2nd row only)	S	S	S	S
Belt-Minder™	S	S	S	S
Heated seats (LH/RH front only)	-	-	O	S
Leather seating surfaces	-	O	S	S
Captain's chairs, 2nd-row dual bucket seats with inboard armrests and leather seating surfaces	-	-	O	O

INTERIOR FEATURES - CLIMATE CONTROL	XLS	XLT	Eddie Bauer	Limited
Air conditioning, manual with rear auxiliary controls	S	S	-	-
Electronic Automatic Temperature Control (EATC) with rear auxiliary controls	-	-	S	S

INTERIOR FEATURES - ENTERTAINMENT SYSTEMS	XLS	XLT	Eddie Bauer	Limited
Premium AM/FM dual media, cassette/single CD (80 watts) w/clock and 6-speakers (becomes optional on Eddie Bauer w/Eddie Bauer Premier Group, which includes upgraded 6-CD stereo) (No charge option for Eddie Bauer & Limited)	S	S	S	O
Premium AM/FM stereo in-dash 6-CD (80 watts) w/clock (standard on Eddie Bauer w/Eddie Bauer Premier Group)	O	O	O	S
Rear seat audio controls	-	S	S	S
Rear Seat DVD Entertainment System – includes 7” flip-down color video monitor w/ automatic system shutoff feature, wireless headphones, remote control, dual and single play audio and input for video games (requires 6-CD player audio system; XLT requires XLT Travel Package)	-	O	O	O

INTERIOR FEATURES - COMFORT AND CONVENIENCE	XLS	XLT	Eddie Bauer	Limited
Instrument panel – color-keyed with positive shutoff air registers (4) and LH/RH side window demisters, glove box, dual cupholders, ashtray and cigarette lighter	S	S	-	-
Instrument panel – two-tone with positive shutoff air registers (4) and LH/RH side window demisters, glove box, dual cupholders, ashtray and cigarette lighter	-	-	S	S
Analog instrumentation with transmission temperature gauge, oil pressure, water temperature, speedometer/odometer, tachometer and fuel gauge	S	S	S	S
Power adjustable pedals	O	O	S	-
Power adjustable pedals with memory (available on Eddie Bauer w/Eddie Bauer Premier Group)	-	-	O	S
Leather-wrapped steering wheel with speed control and tilt steering	S	S	S	-

Deluxe leather-wrapped steering wheel w/dual A/C and audio controls, speed control and tilt wheel (available on Eddie Bauer with Eddie Bauer Premier Group)	-	-	O	S
Reverse Sensing System	-	O	S	S
Courtesy lighting: glove box, front dome/map, overhead rear cargo, front lower door courtesy reflector and 2nd-row map lights	S	S	S	S
Wipers – front and rear smart intermittent	S	S	S	S
Day/night rearview mirror	S	S	-	-
Electrochromic auto-dimming rearview mirror	-	O	S	S
Mirrors, trailer tow, power-heated with integrated turn signals and clearance lights, manual telescopic, forward fold arms (4x2 only; available on 4x4 in 4x4 Trailer Tow Package)	O	O	O	O
Sun visors – color-keyed cloth with lighted vanity mirror and secondary blades	S	S	S	-
Sun visors – color-keyed cloth with lighted vanity mirror, secondary blades, with Homelink®	-	-	-	S
Floor console with 4 cupholders, storage bin, rear radio controls, headphone jacks and color-keyed top	-	S	-	-
Floor storage bin, 4 cupholders, rear passenger radio controls, headphone jacks and woodgrain top	-	-	S	S
Overhead console with auxiliary A/C controls	S	S	-	-
Overhead console with map lights trip computer, front auxiliary a/c controls, power rear quarter window controls and garage door opener storage compartment	-	-	S	S
Cupholders – 6 on XLS, 8 on XLT, Eddie Bauer, and Limited	S	S	S	S
Assist handles – 1st row and 2nd row, driver and passenger side	S	S	S	S
Autolock	S	S	S	S
Autolamp	-	S	S	S
Door trim panel – front, soft armrest/pullcup, upper vinyl insert, dual map pockets, courtesy reflector and carpet on lower	S	S	-	-
Door trim panel – rear, soft armrest/pullcup, upper vinyl insert, carpet on lower and lower reflector	S	S	-	-
Eddie Bauer door trim panel – front, soft armrest/pullcup, upper woodgrain insert, dual map pockets, courtesy reflector and carpet on lower	-	-	S	-
Eddie Bauer door trim panel – rear, soft armrest/pullcup, upper woodgrain insert, carpet on lower and lower reflector	-	-	S	-
Limited door trim panel – front, soft armrest/pullcup, upper woodgrain insert, dual map pockets, courtesy reflector, carpet on lower and memory seat/pedal switch	-	-	-	S
Limited door trim panel – rear, soft armrest/pullcup, upper woodgrain insert, carpet on lower and lower reflector	-	-	-	S
Homelink® universal transceiver (available on Eddie Bauer with Eddie Bauer Premier Group)	-	-	O	S
Power door locks with childproof rear doors	S	S	S	S
Powerpoints – instrument panel, third row arm rest, and rear cargo area	S	S	-	-
Powerpoints – instrument panel, rear of floor console, third row arm rest, and rear cargo area	-	-	S	S
Rear window defroster	S	S	S	S
Carpet – color-keyed with 1st- and 2nd-row floor mats	S	S	S	S
Comfort and Convenience Group (includes captain’s chairs, power driver and passenger seat, paint stripe, rear audio controls)	-	S	-	-
Premium Comfort and Convenience Group (includes captain’s chairs, power driver and passenger seat, power rear quarter window, trip computer with compass and distance to empty, paint stripe, rear audio controls) [paint stripe N/A on Limited]	-	-	S	S
Eddie Bauer Premier Group (includes heated seats, memory driver’s seat, memory adjustable pedals, deluxe steering wheel with dual A/C and audio controls, Homelink®, AM/FM stereo with in-dash 6-CD player)	-	-	O	-

XLT Travel Package (includes trip computer with compass and distance to empty, rear power quarter windows)	-	O	-	-
4x4 Trailer Tow Package (includes manual telescoping trailer tow mirrors w/power heated glass, integrated turn signals, clearance lights and rear stabilizer bar)	O	O	O	O
Cargo Package (includes reversible cargo mat and cargo net with tie down hooks standard)	-	-	O	O

EXTERIOR FEATURES - APPEARANCE	XLS	XLT	Eddie Bauer	Limited
Chrome front and rear bumpers	S	S	-	-
Bumpers – front, painted Arizona Beige with Arizona Beige top cap; rear, Arizona Beige	-	-	S	-
Bumper – front, painted body color with body color top cap; rear, painted body color	-	-	-	S
Grille – chrome surround with platinum inserts	S	S	-	-
Grille – body color surround with Arizona Beige	-	-	S	-
Grille – body color surround with body color insert	-	-	-	S
2 front tow hooks	S	S	S	S
Running boards, black nonilluminated	S	S	-	-
Running boards, Arizona Beige illuminated (Black illuminated with Limited, Black exterior)	-	-	S	S
Running boards, chrome, tubular (4x4)	-	O	O	O
Power heated mirrors	S	S	-	-
Power heated mirrors with turn signal	-	-	S	S
Jeweled headlamps	S	S	S	S
Fog lamps	-	-	S	S
Rear Tri-Panel Door™ system – top half liftgate and 2 lower cargo doors	S	S	S	S
Roof rack with 2 crossbars	S	S	S	S

EXTERIOR FEATURES - PROTECTION	XLS	XLT	Eddie Bauer	Limited
Body color molding	S	-	-	-
Bodyside cladding – medium platinum	-	S	-	-
Bodyside cladding – Arizona Beige with wheelip moldings	-	-	S	-
Bodyside cladding – body color with wheelip moldings and chrome inserts	-	-	-	S
Transfer case skid plate (4x4 only)	O	O	O	O

EXTERIOR FEATURES - WINDOWS AND GLASS	XLS	XLT	Eddie Bauer	Limited
Power windows with one-touch down on driver's side	S	S	S	S
Privacy Glass	S	S	S	S
Power rear quarter windows	-	-	S	S

POWER AND HANDLING - POWER	XLS	XLT	Eddie Bauer	Limited
5.4L 3V SEFI Triton® V8 (4x2)	S	S	S	S
6.8L Triton® V10 (4x4)	S	S	S	S
6.0L V8 Power Stroke® Turbo Diesel with standard engine block heater	O	O	O	O
4-speed automatic overdrive transmission (available with gas engines only)	S	S	S	S
5-speed TorqShift™ automatic transmission (available with 6.0L Power Stroke® Turbo Diesel only)	O	O	O	O

Alternator – 130 amp (gas engines only)	S	S	S	S
Alternator – 140 amp (diesel engines only)	O	O	O	O
Maintenance-free battery; 78 AH (750 C.C.A.) with battery-saver feature	S	S	S	S
Engine block heater (diesel only)	O	O	O	O

POWER AND HANDLING - HANDLING	XLS	XLT	Eddie Bauer	Limited
Power steering	S	S	S	S
Suspension, twin I-Beam front (4x2)	S	S	S	S
Suspension, monobeam and leaf spring front (4x4)	S	S	S	S
Stabilizer bar, front	S	S	S	S
Springs, front (3,950 lbs.)	S	S	S	S
Springs, rear leaf (5,240 lbs.)	S	S	S	S
Nonlimited slip axle (not available on 5.4L engine 4x4 models)	S	S	S	S
Rear axle (4x2: 7,000 lbs.; 4x4: 7,000 lbs.)	S	S	S	S
Front axle (4x2: 4,700 lbs.; 4x4: 5,200 lbs.)	S	S	S	S
Electronic shift-on-the-fly (4x4 only)	S	S	S	S
11,000 lbs. load equalizing trailer hitch receiver	S	S	S	S

POWER AND HANDLING - WHEELS AND TIRES	XLS	XLT	Eddie Bauer	Limited
16" aluminum wheel w/bright center ornament	S	S	-	-
16" premium aluminum wheel w/bright center ornament	-	-	S	-
16" aluminum wheel w/limited bright center ornament	-	-	-	S
LT265/75Rx16E OWL A/S tires 4x2	S	S	S	S
LT265/75Rx16E OWL A/T tires (4x4)	S	S	S	S

SAFETY AND SECURITY - SAFETY	XLS	XLT	Eddie Bauer	Limited
Driver and passenger passive restraint airbags	S	S	S	S
Child tethers (3 positions on 2nd row, 1 position on 3rd row)	S	S	S	S
Childproof side door locks	S	S	S	S
Color-keyed lap shoulder, adjustable D-rings in 1st and 2nd row	S	S	S	S
Brakes – 4-wheel disc with 4-wheel anti-lock brake system (ABS)	S	S	S	S
BlockerBeam®	S	S	S	S

SAFETY AND SECURITY - SECURITY	XLS	XLT	Eddie Bauer	Limited
SecuriLock® Passive Anti-Theft System	S	S	S	S
Remote keyless entry with keypad	S	S	S	S

S = Standard O = Optional - = Unavailable

Ford Division reserves the right to change product specifications at any time without incurring obligations.

† Always wear your safety belt and secure children in the rear seat.

DEALER ACCESSORIES

Your local Ford Dealer has just the right car for you, plus a host of accessories to tailor it perfectly to your needs.



Remote Start

No more long waits in a too cold — or too hot — vehicle. Remote start lets you turn on the ignition from up to 500 feet away. You can also use the device to lock and unlock doors and activate the panic button.



The Yakima® MegaWarrior

Take even more on the road. The Yakima® MegaWarrior lets you stow extra gear on your roof.



Mobile-Ease Hands-free Communication System

This Mobile-Ease hands-free communication system allows you to place and receive calls without added distraction. Works with your Bluetooth®-equipped cell phone using the audio system.

WHY FORD CREDIT?

At Ford Credit, auto financing is our specialty. Whether you purchase or opt for a Red Carpet Lease, we offer a range of terms and features that make your experience hassle-free. Contact your local Ford Dealer or visit us on the Web at www.fordcredit.com.



ROADSIDE ASSISTANCE

Every new Ford includes the assurance of a 24-hour emergency Roadside Assistance Program provided during the 3-year/36,000-mile limited warranty period. Ask your Ford Dealer for complete details on this program, which includes such services as fuel delivery, tire change, jump start, or even help when you're locked out of your vehicle.

NEW VEHICLE LIMITED WARRANTY

Under the New Vehicle Limited Warranty, you receive bumper-to-bumper coverage for 3 years/36,000 miles with no deductible. You also receive corrosion perforation coverage for five years with unlimited mileage and no deductible. Ask your Ford Dealer for a copy of the warranty.

COLOR OPTIONS & WHEEL STYLES



16" Polished Aluminum Wheel
Standard on XLS and XLT



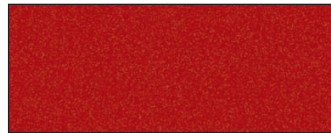
16" Premium Aluminum Wheel
Standard on Eddie Bauer



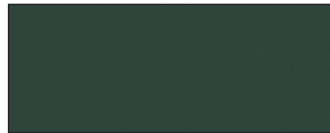
16" Premium Aluminum Wheel
Standard on Limited



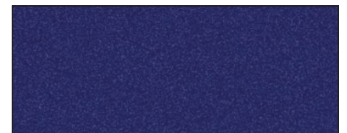
Oxford White



Toreador Red Metallic



Aspen Green Metallic



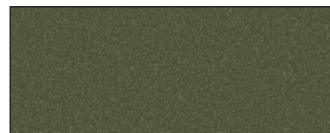
True Blue Metallic



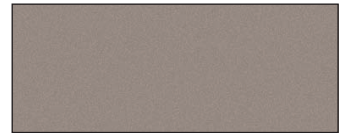
Silver Birch Metallic



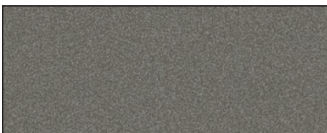
Black



Estate Green Metallic



Pueblo Gold Metallic



Mineral Grey Metallic

HELPFUL FORD LINKS

Now that you've learned more about this Ford vehicle, we would like to recommend the following links that can help you get all the information you need about finding, purchasing and owning the Ford that's just right for you:



BUILT FOR THE ROAD AHEAD.

[Fordvehicles.com](#) - The best place to get information about Ford cars, trucks, and SUVs.

[Get a Price Quote](#) - Request a quick price quote from a Ford Dealer in your area.

[Competitive Comparisons](#) - Get a detailed comparison of your favorite Ford vehicle and how it stacks up against the competition.

[Payment Calculator](#) - Find out how much you'll have to spend on your new vehicle with Ford Credit's Payment Estimator.

[Build & Price Your Ford](#) - Build and price your vehicle online - From performance to interior colors and everything in between.

[Search Dealer Inventory](#) - Find your vehicle at a Dealer near you.

[Locate a Dealer](#) - Our dealer locator lets you view your Ford dealer's services, hours, special promotions, and check new and used inventory.

[Incentives & Financing](#) - Keep up to date with current incentives and financing offers in your area.

[Compare Ford SUVs](#) - Visit the SUV Smart Guide© and find the Ford SUV that's right for you.

[Schedule a Test Drive](#) - Sign up online to drive a next generation of Ford vehicle at a dealership near you.

[Certified Pre-Owned](#) - Ford Quality Checked Certified Pre-Owned Dealers - For pre-owned vehicles with Ford confidence!

[Ford Accessories Store](#) - These great accessories can make your Ford vehicle truly unique.

[Ford Credit](#) - Ford Credit online vehicle financing offers the tools you need to aid in your purchase decision including a Payment Estimator and instant credit approval

[My Ford](#) - The Official Website for Ford Vehicle Owners. Personalized maintenance schedules, exclusive offers & incentives, your service expense log and much more!

Disclaimer

Competitive comparisons based on publicly available information and Ford certification data at time of brochure creation. Some features discussed may be optional. Vehicles shown may contain optional equipment. Features shown may be offered only in combination with other options or subject to additional ordering requirements or limitations. Following creation of the brochure, certain changes in standard equipment, options and the like or product delays, may have occurred which would not be included in these pages. Your Ford Dealer is the best source for up-to-date information. Ford Division reserves the right to change product specifications at any time without incurring obligations.