



2015
FUSION+HYBRID
FUSION ENERGI



Go Further

Captivating.
By design.



Click to see how Fusion
makes every drive dynamic.



Titanium. White Platinum Tri-coat Metallic. Available equipment.

2015 **FUSION+HYBRID**
FUSION ENERGY
ford.com





Inspiring. From every angle.

Tour
the Fusion
gallery



Award-winning design graces every 2015 Ford Fusion. From the elegant grille to radiant LED taillamps, its sculpted lines and swept-back silhouette prove irresistible to the eye. Inside, a high degree of craftsmanship extends even to the lighted, lined and lockable glove compartment.

Fusion empowers you in sophisticated style. The power of choice is expressed in gas, hybrid and plug-in hybrid powertrains, letting you choose what best fits your active lifestyle. An advanced array of driver-assist technologies¹ offers additional convenience.



Gasoline power.

A standard 2.5L gasoline engine powers Fusion. To enhance both performance and efficiency, 2 EcoBoost[®] engines are available. The choice is yours.

Hybrid efficiency.

Fusion Hybrid is powered by a combination electric motor and 2.0L Atkinson-cycle gasoline engine. While driving, its state-of-the-art lithium-ion battery is recharged by the engine and regenerative braking.

Plug-in flexibility.

Utilizing the same powertrain as Fusion Hybrid, Fusion Energi Plug-In Hybrid gives you the additional option of plugging in or not. Its LED-illuminated charge port lets you know when charging is complete.

Titanium. White Platinum Tri-coat Metallic. Fusion Energi Titanium. Ruby Red Tinted Clearcoat Metallic. Hybrid SE. Magnetic. Available equipment.

¹Available feature.

2015 **FUSION+HYBRID**
FUSION ENERGI
ford.com

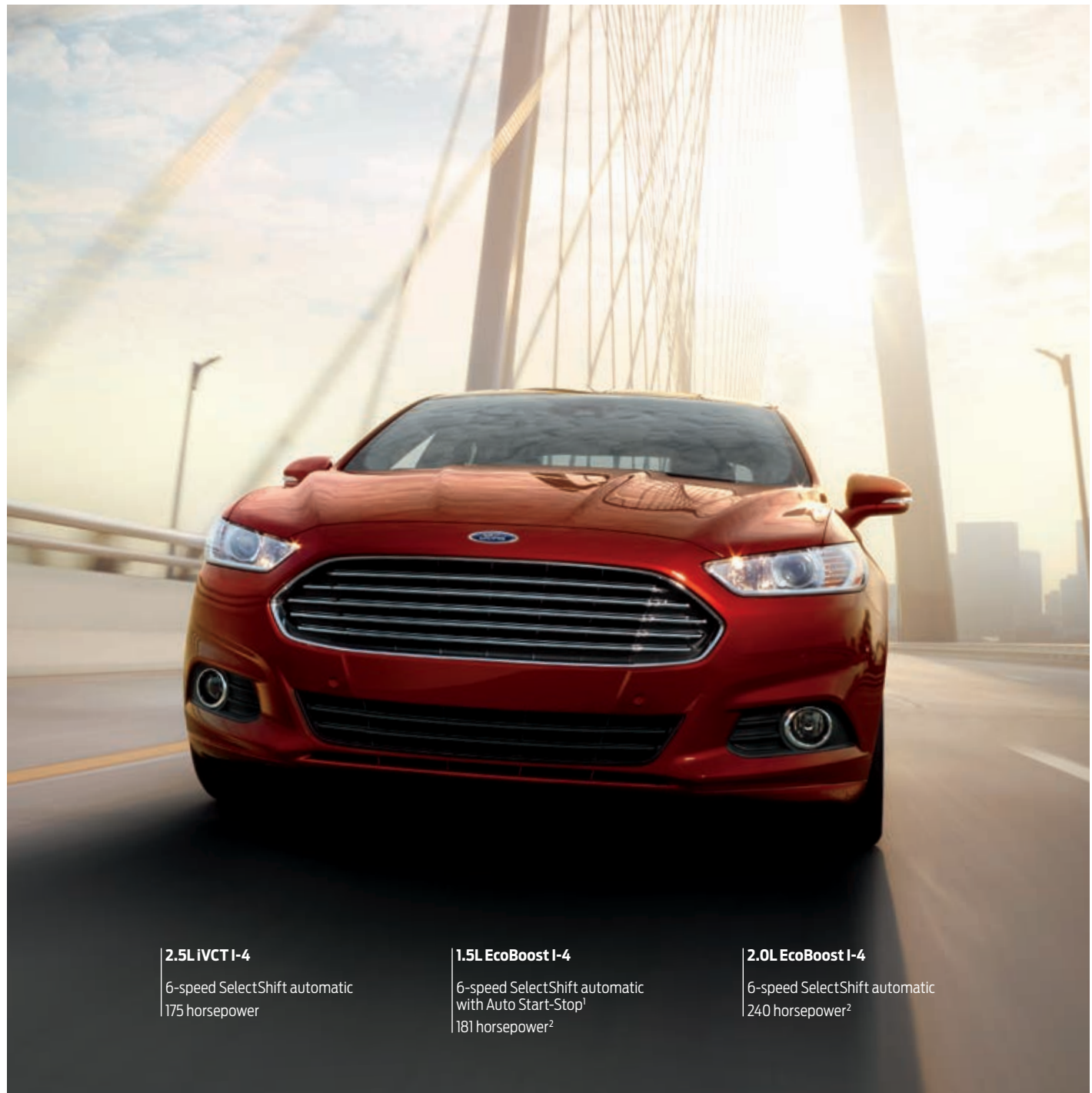
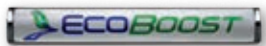


Motivating. With powerful gas choices.

Equip your gasoline-powered Fusion model with a standard 2.5L iVCT engine or one of 2 EcoBoost® turbocharged, direct-injection powerplants.¹

With robust low-end torque and virtually no turbo lag, EcoBoost technology squeezes maximum power from each drop of fuel. Along with impressive efficiency. Get 181 hp² from the 1.5L EcoBoost¹ with 6-speed SelectShift[®] automatic transmission and Auto Start-Stop,¹ plus an EPA-estimated rating of 37 mpg hwy.³

For performance-minded drivers, a 240-hp² 2.0L EcoBoost¹ teams with a SelectShift automatic¹ whose 6 speeds can be paddle shifted from the steering wheel. With Fusion, the choice is always yours. As you accelerate through corners, Torque Vectoring Control (standard on all models) enhances your hold on any road.



2.5L iVCT I-4

6-speed SelectShift automatic
175 horsepower

1.5L EcoBoost I-4

6-speed SelectShift automatic
with Auto Start-Stop¹
181 horsepower²

2.0L EcoBoost I-4

6-speed SelectShift automatic
240 horsepower²

SE. Bronze Fire Tinted Clearcoat Metallic. Available equipment.

¹Available feature. ²Using 93-octane fuel. ³EPA-estimated rating: 25 city/37 hwy/29 combined mpg, 1.5L EcoBoost automatic with Auto Start-Stop. Actual mileage will vary.

2015 **FUSION+HYBRID**
FUSION ENERGY
ford.com





Dramatization. Actual mileage will vary.

Efficient! With state-of-the-art hybrid technology.

Using both gas and electric power, Fusion Hybrid delivers exceptional ride and handling as it seamlessly switches between its electric traction motor and 2.0L Atkinson-cycle gasoline I-4 engine to help maximize fuel efficiency. In fact, it can operate in electric mode at speeds up to 85 mph, due to a state-of-the-art lithium-ion battery that powers the electric traction motor.

See Hybrid in action



To drive more effectively, vibrant “Efficiency Leaves” grow on the Fusion Hybrid SmartGauge® with EcoGuide instrument cluster. The higher your driving efficiency, the more lush your green leaves – giving you instant feedback.

Recharging the battery as you drive,

the Regenerative Braking System captures over 90% of the brake energy and uses it to help maximize your mileage. Even when braking, you’re moving forward in Fusion Hybrid.



Hybrid SE. Magnetic. Available equipment.

¹EPA-estimated rating: 44 city/41 hwy/42 combined mpg, Hybrid. Actual mileage will vary.

2015 **FUSION+HYBRID**
FUSION ENERGY
ford.com





Flexible. With the option to plug in.

Or not. With a higher-capacity, state-of-the-art lithium-ion battery and 2.0L Atkinson-cycle gasoline engine, Fusion Energi Plug-In Hybrid gives you the additional option of plugging in. While you drive, it decides whether to run on battery power or to turn on its gas engine as needed.

An EPA-estimated 95 city MPGe,¹ a gas-plus-electric driving range of 550 miles,² and an all-electric driving range of 19 miles.² Fusion Energi may run all-electric and use no gasoline at all on short commutes – even while cruising at highway speeds.

Discover
plug-in
flexibility



Recharge at home in about 7 hours using its LED-illuminated charge port (shown below) and the standard 120V convenience charge cord. Shorten that time to about 2.5 hours using a Ford-recommended AeroVironment™ 240V home charging station.³ This UL-listed, weather-resistant portable charging station is easy to take with you if you decide to relocate. A hard-wired station is also available for your convenience.

Easily monitor and schedule charging, at home or at one of the growing number of public charging stations near you, with our MyFord® Mobile app⁴ (shown below) and website (myfordmobile.com). Both feature a charging station locator powered by PlugShare.[®]



*Fusion Energi Titanium. Ruby Red Tinted Clearcoat Metallic.
Available equipment.*



2015 **FUSION-HYBRID**
FUSION ENERGI
ford.com

¹EPA-estimated rating of 95 city/81 hwy/88 combined MPGe. Actual mileage will vary. MPGe is the EPA equivalent measure of gasoline fuel efficiency for electric mode operation. ²EPA-estimated rating of 40 city/36 hwy/38 combined mpg, 14.0-gallon fuel tank; 19 miles electric. Range calculation based on www.fueleconomy.gov. Actual range varies with conditions such as external elements, driving behaviors, vehicle maintenance and lithium-ion battery age. ³Available feature. To begin the process, call 1-888-219-6747 or visit evsolutions.com/ford. Charging stations are available with or without full installation services by AeroVironment. ⁴MyFord Mobile subscription complimentary for 5 years from the vehicle sale date as recorded by the dealer. Subscription fees apply after 5 years. MyFord Mobile requires a compatible 2G independent cellular network. Evolving technology and cellular networks may affect future availability and functionality.



Gratifying. Enjoy its finely crafted comforts.

Relax in supportive, leather-trimmed, 10-way power, heated front seats.¹ Recharge your devices with a convenient 110-volt power outlet.¹ And enjoy the output from a well-balanced, 12-speaker Audio System from Sony,^{®1} as well as the peace from acoustic underbody shields and sound-absorption material. Setting the ambient lighting¹ to your choice of 7 hues brings it all together.

A new Terracotta Package adds beauty with Terracotta-colored premium leather-trimmed seats and more. See details in the Specifications section.

Your sense of responsibility is also satisfied inside Fusion. Nearly 40 recycled 16-oz. plastic bottles go into the EcoCloth seats on select models, while recycled material is used for the injection-molded splash shields and other underbody components.

PUSH-BUTTON



START¹

HEATED



STEERING¹

HEATED/COOLED



FRONT SEATS¹

SE. Dune leather trim. Luxury Package. Available equipment.

¹Available feature.

2015 **FUSION+HYBRID**
FUSION ENERGY
ford.com



Responsive. Just say a command.

Then get connected. Standard voice-activated Ford SYNC®¹ with 911 Assist® delivers hands-free calls, Bluetooth®-streaming music and more. Once paired, it can download contacts and play music from your smartphone. It can also access your MP3 player, USB or iPod®. Just touch a button on the steering wheel and say things like "Call: Ashley at home" or "Play playlist: Rock."

Control apps by voice too, such as Pandora®, iHeartAuto,™ SiriusXM® and more with SYNC AppLink™² (on select models).

To better connect with friends, family, directions and more, sound absorption material in Fusion helps keep noise to a minimum, while active noise cancellation in Fusion Hybrid and Fusion Energi uses the audio system to minimize road noise. SYNC. Say the word.



| SYNC

Titanium. Charcoal Black leather trim with perforated inserts. Available equipment.

¹Driving while distracted can result in loss of vehicle control. Only use mobile phones and other devices, even with voice commands, when it is safe to do so. Not all features are compatible with all phones. ²Available feature. SYNC AppLink is available on select models and compatible with select smartphone platforms. SYNC AppLink is not compatible with MyFord Touch®. Commands may vary by phone and AppLink software.

2015 **FUSION+HYBRID**
FUSION ENERGI
ford.com





Interactive. With quick response.

The 8" color LCD touch screen on SYNC® with MyFord Touch®¹ can help you on every drive.

Answer a call from your paired phone by pressing "Accept" on the screen. Hear a new favorite tune over the radio? With HD Radio™ Technology² and iTunes® tagging, simply touch the TAG shopping cart icon when the song is playing to mark it for purchase later.



SiriusXM®² lets you enjoy commercial-free music, plus sports, news, entertainment, and every premium channel with your 6-month All Access trial subscription.³ The voice-activated Navigation System² also includes a 5-year subscription to SiriusXM Traffic and Travel Link® services.² These features provide detailed traffic information on accidents, construction and road closures, plus local and national weather forecasts, fuel prices and more.



Titanium. SYNC with MyFord Touch. Available equipment.



2015 **FUSION-HYBRID**
FUSION ENERGY
Go Further
ford.com

¹Available feature. Driving while distracted can result in loss of vehicle control. Only use SYNC/MyFord Touch/other devices, even with voice commands, when it is safe to do so. Some features may be locked out while the vehicle is in gear. Not all features are compatible with all phones. ²Available feature. ³Trial subscription also includes access to SiriusXM Internet Radio on your computer, smartphone or tablet. Satellite and Internet Radio lineups vary slightly.



See how
it all works



Advanced. To help locate your sweet spot.

Fusion can help in traffic, with parallel parking and more.

Maintain your lane with help from our Lane-Keeping System.^{1,2} It can detect lane markings with a forward-facing camera and send vibration pulses to the steering wheel. If needed, it can apply steering torque to prompt you to steer back toward center.

Make parallel parking easier with active park assist.¹ This system not only helps you find a spot, it actually steers the vehicle into place while you control the gear shifter, and brake and accelerator pedals.

Get a heads-up from adaptive cruise control and collision warning with brake support.¹ This system helps maintain your choice of 4 preset gaps from the vehicle in front of you and can alert you to a potential collision. If one is detected, it flashes a warning on the windshield, sounds an alarm, and preps the braking system to help.

Stay alert to traffic detected in blind spots as you drive forward, or traffic nearing either side of the vehicle as you slowly back up, thanks to BLIS® (Blind Spot Information System) with cross-traffic alert.¹ It helps warn you using lights embedded in the sideview mirrors.³

¹Available feature. Driver-assist features are supplemental and do not replace the driver's judgment.

²Lane-Keeping System does not control steering. ³BLIS replaces standard integrated blind spot mirrors.



Stable. When it's needed most.

Rest assured that Fusion is engineered to bring stability to your journey. Its achievements include both the government's highest possible safety rating and the highest possible safety rating from the Insurance Institute for Highway Safety (IIHS) when equipped with available collision warning with brake support.

8 standard airbags join inflatable 2nd-row safety belts¹ (in the rear outboard seating positions) inside. Underneath, AdvanceTrac[®] electronic stability control² helps keep things stable, particularly in inclement weather. And Intelligent all-wheel drive (AWD)¹ balances torque between the front and rear wheels to enhance handling and maximize traction, typically before wheelslip can even occur.



SAFETY RATING³

2014 IIHS



TOP SAFETY PICK+

INFLATABLE



2ND-ROW SAFETY BELTS¹

Titanium. White Platinum Tri-coat Metallic. Available equipment.

¹Available feature. ²Remember that even advanced technology cannot overcome the laws of physics. It's always possible to lose control of a vehicle due to inappropriate driver input for the conditions.

³Ratings based on Overall and Frontal Crash tests. Government 5-star Safety Ratings are part of the U.S. Department of Transportation's New Car Assessment Program (www.safercar.gov).

2015 **FUSION+HYBRID**
FUSION ENERGY
ford.com



Fusion Specifications



Engines/EPA-Estimated Ratings & Dimensions

2.5L iVCT I-4

175 hp @ 6,000 rpm¹
175 lb.-ft. of torque @ 4,500 rpm
6-speed SelectShift® automatic
22 city/34 hwy/26 combined mpg

1.5L EcoBoost® I-4

181 hp @ 6,000 rpm¹
185 lb.-ft. of torque @ 4,320 rpm¹
6-speed SelectShift automatic
24 city/36 hwy/28 combined mpg
6-speed SelectShift automatic
with Auto Start-Stop
25 city/37 hwy/29 combined mpg

2.0L EcoBoost I-4

240 hp @ 5,550 rpm¹
270 lb.-ft. of torque @ 3,000 rpm¹
6-speed SelectShift automatic
FWD 22 city/33 hwy/26 combined mpg
AWD 22 city/31 hwy/25 combined mpg

2.0L iVCT Atkinson-Cycle I-4 Hybrid with Permanent-Magnet AC-Synchronous Electric Motor

Total system net horsepower: 188
Electronically controlled continuously variable transmission (eCVT)
44 city/41 hwy/42 combined mpg

2.0L iVCT Atkinson-Cycle I-4 Plug-In Hybrid with Permanent-Magnet AC-Synchronous Electric Motor

Total system net horsepower: 195 charge depletion mode
188 charge sustain mode
Electronically controlled continuously variable transmission (eCVT)
40 city/36 hwy/38 combined mpg (gasoline only)
95 city/81 hwy/88 combined MPGe

	Fusion, Hybrid/Fusion Energi
Exterior	
Wheelbase	112.2"
Length	191.8"
Height	58.2"/58.0"
Width – Mirrors folded	75.2"
Width – Including mirrors	83.5"
Interior	Front/Rear
Head room	39.2"/37.8"
Shoulder room	57.8"/56.9"
Hip room	55.0"/54.4"
Leg room	44.3"/38.3"
Capacities (cu. ft.)	Fusion, Hybrid/Fusion Energi
Passenger volume	102.8
Luggage capacity	16.0, 12.0/8.2
Total interior volume	118.8, 114.8/111.0
Fuel tank (gal.)	
FWD/AWD	16.5/17.5
Hybrid/Fusion Energi	13.5/14.0

Standard Features

Mechanical

4-wheel disc Anti-Lock Brake System (ABS)
Electric parking brake
Electric power-assisted steering
Front and rear stabilizer bars
Front-wheel drive (FWD)
Hill start assist
Suspension – Front: independent MacPherson strut;
rear: independent multilink
Torque Vectoring Control

Interior

12-volt powerpoints (3)
Dome light with map lights
Driver and front-passenger sun visors
with illuminated vanity mirrors
Ford SYNC® voice-activated, in-vehicle
connectivity system
Full center console with armrest and storage
Illuminated, lockable glove compartment
Message center with trip computer
Power door locks
Power windows with global open/close
and one-touch-up-/down feature
Rear view camera
Steering wheel-mounted cruise, audio
and 5-way MyFord® controls
Tilt/telescoping steering column

Exterior

Automatic halogen projector beam headlamps
Chrome grille
Configurable daytime running lamps
Easy Fuel® capless fuel filler
LED taillamps
Rear-window defroster
Solar-tinted glass
Speed-sensitive windshield wipers

Safety & Security

Personal Safety System™ for driver and front
passenger includes dual-stage front airbags²; safety
belt pretensioners, safety belt energy-management
retractors, safety belt usage sensors, driver's seat
position sensor, crash severity sensor, restraint control
module and Front-Passenger Sensing System
Driver and front-passenger knee airbags²
Front-seat side airbags²
Side-curtain airbags²
3-point safety belts for all 5 seating positions
AdvanceTrac® electronic stability control
with brake-actuated traction control
Anti-theft perimeter alarm
Belt-Minder® front safety belt reminder
Child-safety rear door locks
Emergency in-trunk release handle
Illuminated Entry System
LATCH – Lower Anchors and Tether Anchors for Children
MyKey®
SecuriLock® Passive Anti-Theft System
SOS Post-Crash Alert System™
Tire Pressure Monitoring System (excludes spare)

¹Dimensions may vary by trim level.

²Using 93-octane fuel. ³Always wear your safety belt and secure children in the rear seat.



SE. Ebony cloth trim with red stitching. Appearance Package. Available equipment.

MyFord 4.2" color LCD center stack display.

60/40 split fold-flat rear seat.

Easy Fuel[®] capless fuel filler.

S

Equipment Group 100A
Includes all standard features, plus:

Mechanical

2.5L iVCT I-4 engine
6-speed SelectShift[®] automatic transmission with thumb switch operation
Compact spare

Seating

6-way manual driver's seat
4-way manual front-passenger seat
4-way adjustable front head restraints
60/40 split fold-flat spring-assisted rear seat
Cloth seating

Interior

AM/FM stereo/single-CD player with MP3 capability and 4 speakers
Cruise control
Day/night rearview mirror
Front carpeted floor mats
Single-zone manual air conditioning
SYNC[®] with MyFord[®] voice-activated, in-vehicle connectivity system with 4.2" color LCD displays in instrument cluster and center stack; SYNC AppLink[™]; and media hub with USB port

Exterior

16" painted aluminum wheels with 215/60R16 all-season tires
Black rocker moldings
Body-color door handles
Body-color, power sideview mirrors with integrated blind spot mirrors
Single exhaust with bright tip

Available Options

All-weather floor mats
Inflatable rear safety belts in outboard seating positions
Remote Start System
Trunk cargo net

SE

Equipment Group 200A
Includes select S features, plus:

Seating

10-way power driver's seat including power lumbar
6-way power front-passenger seat with fore/aft/up/down adjustment and power recline
Rear-seat fold-down center armrest with 2 cupholders

Interior

AM/FM stereo/single-CD player with MP3 capability and 6 speakers
Compass
Outside temperature display
Rear climate ducts
Rear carpeted floor mats
SiriusXM[®] Satellite Radio with 6-month trial subscription

Exterior

17" Sparkle Silver-painted aluminum wheels with 235/50R17 all-season tires
Body-color, power, heated sideview mirrors with security approach lamps and integrated turn signal indicators and blind spot mirrors
Body-color rocker moldings
SecuriCode[™] invisible keypad

Available Equipment Groups

Equipment Group 201A – Appearance Package includes 18" 5-spoke premium painted aluminum wheels with 235/45R18 all-season tires; rear decklid spoiler; fog lamps; leather-wrapped steering wheel; Ebony EcoCloth interior with contrasting red stitching on center console and seats (n/a with Auto Start-Stop)

Equipment Group 202A – Luxury Package includes 1.5L EcoBoost[®] I-4 engine; driver's seat memory feature; heated front seats; leather-trimmed seats, steering wheel and shift knob; auto-dimming rearview mirror; fog lamps; chrome moldings around door windows; and power, heated sideview mirrors with memory, security approach lamps, auto-dimming driver's side, and integrated turn signal indicators and blind spot mirrors

Available Options & Packages

1.5L EcoBoost I-4 engine with 6-speed SelectShift automatic transmission
1.5L EcoBoost I-4 engine with 6-speed SelectShift automatic transmission and Auto Start-Stop (requires 17" wheels; n/a with 201A)

2.0L EcoBoost I-4 engine and 6-speed SelectShift automatic transmission with paddle shifters; includes dual integrated bright exhaust tips (requires 201A or 202A and 18" wheels)

18" Gloss Black aluminum wheels (requires 202A; n/a with Terracotta Package)
18" premium Luster Nickel-painted aluminum wheels (requires 202A; n/a with Terracotta Package)
18" summer-only tires¹ (requires 2.0L engine; n/a with Terracotta Package)

Active park assist with Forward Sensing System (requires 202A and SE MyFord Touch[®] Technology Package)
Adaptive cruise control and collision warning with brake support (requires 202A, 2.0L engine and SE MyFord Touch Technology Package)

All-weather floor mats
Heated steering wheel (requires 202A and SE MyFord Touch Technology Package; n/a with manual transmission)

Inflatable rear safety belts in outboard seating positions

Intelligent Access with push-button start and Remote Start System (requires 202A and SE MyFord Touch Technology Package)

Intelligent all-wheel drive (AWD) (requires 201A or 202A, 2.0L EcoBoost engine and 18" wheels)

Power moonroof with universal garage door opener
Premium carpeted front and rear floor mats, plus trunk mat (n/a with Terracotta Package)

Remote Start System
Reverse Sensing System

SE Luxury Driver Assist Package includes BLIS[®] (Blind Spot Information System) with cross-traffic alert, Lane-Keeping System, auto high beams, rain-sensing windshield wipers, and 110-volt power outlet (requires 202A and SE MyFord Touch Technology Package)

SE MyFord Touch Technology Package includes SYNC with MyFord Touch voice-activated, in-vehicle connectivity system, which includes SYNC Services;² 2 configurable 4.2" color LCD displays in instrument cluster, 8" color LCD touch screen in center stack, and media hub with 2 USB ports, SD card reader and audio/video input jacks; Reverse Sensing System; and dual-zone electronic automatic temperature control

Terracotta Package includes Terracotta premium leather-trimmed seats and vinyl door-trim inserts, premium carpeted front and rear floor mats, and 18" 5-spoke machined and painted aluminum wheels (requires 202A; n/a with Auto Start-Stop)

Trunk cargo net

Voice-activated Navigation System with integrated SiriusXM Traffic and Travel Link[®] with 5-year subscription (requires SE MyFord Touch Technology Package)

¹Ford does not recommend using summer tires when temperatures drop to approximately 40°F or below (depending on tire wear and environmental conditions) or in snow/ice conditions. If the vehicle must be driven in these conditions, Ford recommends using all-season or winter tires. ²SYNC Services varies by trim level and model year and may require a subscription. Traffic alerts and turn-by-turn directions available in select markets. Message and data rates may apply. Ford Motor Company reserves the right to change or discontinue this product service at any time without prior notification or incurring any future obligation.



16" Painted Aluminum
Standard: S



17" Sparkle Silver-Painted
Aluminum
Standard: SE



18" Gloss Black Aluminum
Optional: SE



18" Premium Luster Nickel-
Painted Aluminum
Optional: SE



18" 5-Spoke Premium
Painted Aluminum
Included: Appearance Package



18" 5-Spoke Machined
and Painted Aluminum
Included: Terracotta Package

Titanium

Equipment Group 300A

Includes select SE features, plus:

Mechanical

2.0L EcoBoost® I-4 engine

6-speed SelectShift® automatic transmission with steering-wheel mounted paddle shifters

Seating

Leather-trimmed Sport seats with 10-way power, heated front seats and driver's side memory with 3 settings

Interior

Aluminum brake and accelerator pedal covers

Aluminum front-door sill plates

Ambient lighting

Audio System from Sony® with AM/FM stereo/single-CD player with MP3 capability, 12 speakers in 10 locations and HD Radio™ Technology

Auto-dimming rearview mirror

Dual-zone electronic automatic temperature control

Intelligent Access with push-button start and Remote Start System (2 key fob transmitters)

Leather-wrapped steering wheel and shift knob

SYNC® with MyFord Touch® voice-activated, in-vehicle connectivity system, which includes SYNC Services¹; 2 configurable 4.2" color LCD displays in instrument cluster; 8" color LCD touch screen in center stack; and media hub with 2 USB ports, SD card reader and audio/video input jacks

Exterior

18" polished face wheels with Flash Gray-painted pockets and 235/45R18 all-season tires

Body-color door handles with chrome inserts

Body-color, power, heated sideview mirrors with memory, security approach lamps, auto-dimming driver's side, and integrated turn signal indicators and blind spot mirrors

Dual integrated bright exhaust tips

Fog lamps

Rear decklid spoiler

Reverse Sensing System

Available Options & Packages

18" summer-only tires² (requires AWD; n/a with Terracotta Package)

19" H-spoke dark stainless-painted aluminum wheels and 235/40R19 all-season tires (n/a with Terracotta Package)

Active park assist with Forward Sensing System

Adaptive cruise control and collision warning with brake support

All-weather floor mats

Brick Red Leather Package includes Brick Red premium leather-trimmed seats and vinyl door-trim inserts, premium carpeted front and rear floor mats, and 18" 5-spoke machined and painted aluminum wheels

Cooled front seats

Heated steering wheel

Inflatable rear safety belts in outboard seating positions

Intelligent all-wheel drive (AWD)

Power moonroof with universal garage door opener

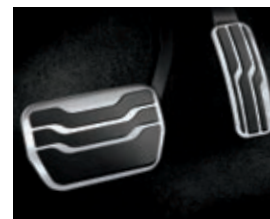
Premium carpeted front and rear floor mats, plus trunk mat (n/a with Brick Red Leather Package or Terracotta Package)

Terracotta Package includes Terracotta premium leather-trimmed seats and vinyl door-trim inserts, premium carpeted front and rear floor mats, and 18" 5-spoke machined and painted aluminum wheels

Titanium Driver Assist Package includes BLIS® (Blind Spot Information System) with cross-traffic alert, Lane-Keeping System, auto high beams, rain-sensing windshield wipers, and 110-volt power outlet

Trunk cargo net

Voice-activated Navigation System with integrated SiriusXM® Traffic and Travel Link® with 5-year subscription



Terracotta premium leather trim with perforated inserts. Terracotta Package. Available equipment.

Intelligent Access with push-button start.

Aluminum brake and accelerator pedal covers.

Audio System from Sony with HD Radio Technology and iTunes® tagging.

Steering wheel-mounted paddle shifters.



18" Polished Face with Flash Gray-Painted Pockets
Standard



18" 5-Spoke Machined and Painted Aluminum
Included: Brick Red Leather Package and Terracotta Package



19" H-Spoke Dark Stainless-Painted Aluminum
Optional

¹SYNC Services varies by trim level and model year and may require a subscription. Traffic alerts and turn-by-turn directions available in select markets. Message and data rates may apply. Ford Motor Company reserves the right to change or discontinue this product service at any time without prior notification or incurring any future obligation. ²Ford does not recommend using summer tires when temperatures drop to approximately 40°F or below (depending on tire wear and environmental conditions) or in snow/ice conditions. If the vehicle must be driven in these conditions, Ford recommends using all-season or winter tires.



SmartGauge with EcoGuide instrument cluster. Available equipment.

110-volt power outlet!¹

Climate control screen on SYNC with MyFord Touch!²

"Efficiency Leaves" on SmartGauge with EcoGuide instrument cluster.

Hybrid S

Equipment Group 400A

Includes select S features, plus:

Mechanical

2.0L iVCT Atkinson-cycle I-4 HEV engine with permanent-magnet AC-synchronous electric motor
Electronically controlled continuously variable transmission (eCVT)

Lithium-Ion Battery Pack System

Regenerative Braking System

Tire mobility kit in lieu of spare tire

Seating

Unique EcoCloth seats with REPVEVE[®] fabric

Interior

Active noise cancellation

AM/FM stereo/single-CD player with MP3 capability and 6 speakers

Dual-zone electronic automatic temperature control

Front carpeted floor mats

SmartGauge[®] with EcoGuide

Exterior

17" 15-spoke Sparkle Silver-painted aluminum wheels with P225/50R17 all-season tires

Single bright exhaust tip

Available Options

All-weather floor mats

Inflatable rear safety belts in outboard seating positions

Remote Start System

Trunk cargo net

Hybrid SE

Equipment Group 500A

Includes select Hybrid S features, plus:

Seating

10-way power driver's seat including power lumbar

6-way power front-passenger seat with fore/aft/up/down adjustment and power recline

Interior

Compass

Outside temperature display

Rear climate ducts

Rear carpeted floor mats

SiriusXM[®] Satellite Radio with 6-month trial subscription

Exterior

Body-color, power, heated sideview mirrors with security approach lamps and integrated turn signal indicators and blind spot mirrors

Body-color rocker moldings

SecuriCode[™] invisible keypad

Available Equipment Groups

Equipment Group 501A – Appearance Package includes 17" 10-spoke painted aluminum wheels; rear decklid spoiler; fog lamps; leather-wrapped steering wheel; and Ebony EcoCloth interior with contrasting red stitching on center console and seats

Equipment Group 502A – Luxury Package includes driver's seat memory feature; heated front seats; leather-trimmed seats, steering wheel and shift knob; auto-dimming rearview mirror; fog lamps; chrome moldings around door windows; and power, heated sideview mirrors with memory, security approach lamps, auto-dimming driver's side, and integrated turn signal indicators and blind spot mirrors

Available Options & Packages

Active park assist with Forward Sensing System (requires 502A and SE MyFord Touch[®] Technology Package)

Adaptive cruise control and collision warning with brake support (requires SE MyFord Touch Technology Package; n/a on 500A)

All-weather floor mats

Heated steering wheel (requires 502A and SE MyFord Touch Technology Package)

Inflatable rear safety belts in outboard seating positions

Intelligent Access with push-button start and Remote Start System (requires 502A and SE MyFord Touch Technology Package)

Power moonroof with universal garage door opener

Premium carpeted front and rear floor mats, plus trunk mat (n/a with Terracotta Package)

Remote Start System

Reverse Sensing System

SE Luxury Driver Assist Package includes BLIS[®] (Blind Spot Information System) with cross-traffic alert, Lane-Keeping System, auto high beams, 110-volt power outlet and rain-sensing windshield wipers (requires 502A and SE MyFord Touch Technology Package)

SE MyFord Touch Technology Package includes SYNC[®] with MyFord Touch voice-activated, in-vehicle connectivity system, which includes SYNC Services²; 2 configurable 4.2" color LCD displays in instrument cluster; 8" color LCD touch screen in center stack; and media hub with 2 USB ports, SD card reader and audio/video input jacks; Reverse Sensing System; and 110-volt power outlet

Terracotta Package includes Terracotta premium leather-trimmed seats and vinyl door-trim inserts, and premium carpeted front and rear floor mats (requires 502A)

Trunk cargo net

Voice-activated Navigation System with integrated SiriusXM Traffic and Travel Link[®] with 5-year subscription (requires SE MyFord Touch Technology Package)

Hybrid Titanium

Equipment Group 600A

Includes select Hybrid SE features, plus:

Seating

Leather-trimmed Sport seats with 10-way power, heated front seats and driver's side memory with 3 settings

Interior

110-volt power outlet

Aluminum brake and accelerator pedal covers

Aluminum front-door sill plates

Ambient lighting

Audio System from Sony[®] with AM/FM stereo/single-CD player with MP3 capability, 12 speakers in 10 locations and HD Radio[™] Technology

Auto-dimming rearview mirror

Intelligent Access with push-button start and Remote Start System (2 key fob transmitters)

Leather-wrapped steering wheel and shift knob

SYNC with MyFord Touch voice-activated, in-vehicle connectivity system, which includes SYNC Services²; 2 configurable 4.2" color LCD displays in instrument cluster; 8" color LCD touch screen in center stack; and media hub with 2 USB ports, SD card reader and audio/video input jacks

Exterior

17" 10-spoke painted aluminum wheels

Body-color door handles with chrome inserts

Body-color, power, heated sideview mirrors with memory, security approach lamps, auto-dimming driver's side, and integrated turn signal indicators and blind spot mirrors

Fog lamps

Rear decklid spoiler

Reverse Sensing System

Available Options & Packages

Active park assist with Forward Sensing System

Adaptive cruise control and collision warning with brake support

All-weather floor mats

Brick Red Leather Package includes Brick Red premium leather-trimmed seats and vinyl door-trim inserts, and premium carpeted front and rear floor mats

Cooled front seats

Heated steering wheel

Inflatable rear safety belts in outboard seating positions

Power moonroof with universal garage door opener
Premium carpeted front and rear floor mats, plus trunk mat (n/a with Brick Red Leather Package or Terracotta Package)

Terracotta Package

Titanium Driver Assist Package includes BLIS (Blind Spot Information System) with cross-traffic alert, Lane-Keeping System, auto high beams, and rain-sensing windshield wipers

Trunk cargo net

Voice-activated Navigation System with integrated SiriusXM Traffic and Travel Link[®] with 5-year subscription



17" 15-Spoke Sparkle Silver-painted Aluminum
Standard: Hybrid S & Hybrid SE



17" 10-Spoke Painted Aluminum
Standard: Hybrid Titanium
Included: Appearance Package

¹Available feature. ²SYNC Services varies by trim level and model year and may require a subscription. Traffic alerts and turn-by-turn directions available in select markets. Message and data rates may apply. Ford Motor Company reserves the right to change or discontinue this product service at any time without prior notification or incurring any future obligation.

Fusion Energi SE

Equipment Group 700A
Includes select Hybrid SE features, plus:

Mechanical

2.0L iVCT Atkinson-cycle I-4 PHEV engine with permanent-magnet AC-synchronous electric motor
7.6 kWh Lithium-Ion Battery Pack System
120-volt convenience charge cord

Seating

6-way power front-passenger seat with fore/aft/up/down adjustment and power recline
Leather-trimmed seats with heated front seats and driver's side memory with 3 settings

Interior

110-volt power outlet
EV Mode button with EV Now, EV Later and EV Auto
Leather-wrapped steering wheel and shift knob
MyFord® Mobile app with 5-year service agreement
SYNC® with MyFord Touch® voice-activated, in-vehicle connectivity system, which includes SYNC Services¹;
2 configurable 4.2" color LCD displays in instrument cluster; 8" color LCD touch screen in center stack; and media hub with 2 USB ports, SD card reader and audio/video input jacks

Exterior

17" 15-spoke Sparkle Silver-painted aluminum wheels with P225/50VR17 all-season tires
Body-color, power, heated sideview mirrors with memory, security approach lamps, auto-dimming driver's side, and integrated turn signal indicators and blind spot mirrors
External charge port with LED-illuminated state-of-charge indicator
Fog lamps
Reverse Sensing System
Tire mobility kit (in lieu of spare tire)

Available Options & Package

Active park assist with Forward Sensing System
Adaptive cruise control and collision warning with brake support
All-weather floor mats
Charge cord bag by THULE®²
Charge door decal
Driver Assist Package includes BLIS® (Blind Spot Information System) with cross-traffic alert, Lane-Keeping System, auto high beams, and rain-sensing windshield wipers
Heated steering wheel
Inflatable rear safety belts in outboard seating positions
Intelligent Access with push-button start and Remote Start System
Power moonroof with universal garage door opener
Premium carpeted front and rear floor mats
Trunk cargo net
Voice-activated Navigation System with integrated SiriusXM® Traffic and Travel Link® with 5-year subscription

Fusion Energi Titanium

Equipment Group 800A
Includes select Fusion Energi SE features, plus:

Seating

10-way power front-passenger seat

Interior

Aluminum brake and accelerator pedal covers
Aluminum front-door sill plates
Ambient lighting
Audio System from Sony® with AM/FM stereo/single-CD player with MP3 capability, 12 speakers in 10 locations and HD Radio™ Technology
Intelligent Access with push-button start and Remote Start System (2 key fob transmitters)

Exterior

17" 10-spoke painted aluminum wheels
Body-color door handles with chrome inserts
Rear decklid spoiler

Available Options & Packages

Active park assist with Forward Sensing System
Adaptive cruise control and collision warning with brake support
All-weather floor mats
Brick Red Leather Package includes Brick Red premium leather-trimmed seats and vinyl door-trim inserts, and premium carpeted front and rear floor mats

Charge cord bag by THULE²
Charge door decal
Cooled front seats
Heated steering wheel
Inflatable rear safety belts in outboard seating positions
Power moonroof with universal garage door opener
Premium carpeted front and rear floor mats (n/a with Brick Red Leather Package)
Titanium Driver Assist Package includes BLIS (Blind Spot Information System) with cross-traffic alert, Lane-Keeping System, auto high beams, and rain-sensing windshield wipers
Trunk cargo net
Voice-activated Navigation System with integrated SiriusXM Traffic and Travel Link with 5-year subscription



Titanium. Charcoal Black leather trim with perforated inserts. Available equipment.

LED-illuminated charge port.

Energy flow screen.

240-volt electric charging station by AeroVironment.³



17" 15-Spoke Sparkle Silver-Painted Aluminum
Standard: Fusion Energi SE



17" 10-Spoke Painted Aluminum
Standard: Fusion Energi Titanium

¹SYNC Services varies by trim level and model year and may require a subscription. Traffic alerts and turn-by-turn directions available in select markets. Message and data rates may apply. Ford Motor Company reserves the right to change or discontinue this product service at any time without prior notification or incurring any future obligation. ²Ford Licensed Accessory. ³Available feature. Third-party installation required.

Exteriors



White Platinum Tri-coat Metallic



Oxford White



Ingot Silver



Ruby Red Tinted Clearcoat Metallic



Bronze Fire Tinted Clearcoat Metallic



Deep Impact Blue



Tectonic



Magnetic



Guard

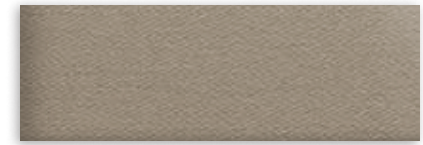


Tuxedo Black

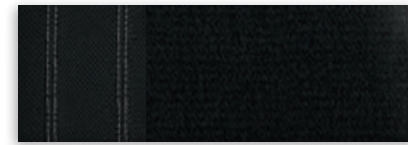
Interiors



1 Earth Gray Cloth



2 Dune Cloth



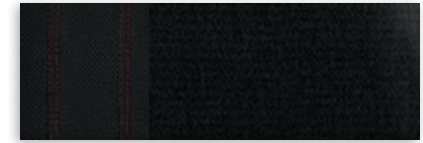
3 Ebony Cloth



4 Dune Leather



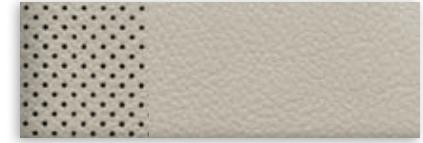
5 Charcoal Black Leather



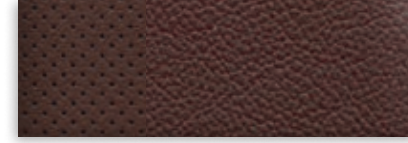
6 Ebony Cloth with Red Stitching



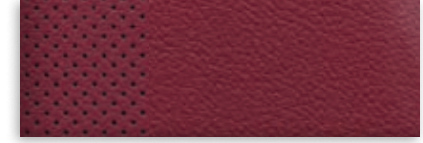
7 Charcoal Black Leather with Perforated Inserts



8 Medium Soft Ceramic Leather with Perforated Inserts



9 Terracotta Premium Leather with Perforated Inserts



10 Brick Red Premium Leather with Perforated Inserts

Exteriors	Interiors																										
	S	SE					Titanium		Hybrid S	Hybrid SE			Hybrid Titanium		Fusion Energi SE	Fusion Energi Titanium											
White Platinum Tri-coat Metallic ¹		2	3	4	5	6	9	7	8	9	10		2	3	4	5	6	9	7	8	9	10	4	5	7	8	10
Oxford White	1	2	3	4	5	6	9	7	8	9	10	1	2	3	4	5	6	9	7	8	9	10	4	5	7	8	10
Ingot Silver	1	2	3	4	5	6	9	7	8	9	10	1	3	4	5	6	9	7	8	9	10	4	5	7	8	10	
Ruby Red Tinted Clearcoat Metallic ¹	1	2	3	4	5	6	7	8	1	2	3	4	5	6	7	8	4	5	7	8	4	5	7	8			
Bronze Fire Tinted Clearcoat Metallic ¹	1	2	3	4	5	6	9	7	8	9	1	2	3	4	5	6	9	7	8	9	4	5	7	8			
Deep Impact Blue	1	2	3	4	5	6	7	8	1	2	3	4	5	6	7	8	4	5	7	8	4	5	7	8			
Tectonic	1	2	3	4	5	6	9	7	8	9	10	1	2	3	4	5	6	9	7	8	9	10	4	5	7	8	10
Magnetic	1	2	3	4	5	6	9	7	8	9	10	1	2	3	4	5	6	9	7	8	9	10	4	5	7	8	10
Guard	1	2	3	4	5	6	7	8	1	2	3	4	5	6	7	8	4	5	7	8	4	5	7	8			
Tuxedo Black	1	2	3	4	5	6	9	7	8	9	10	1	2	3	4	5	6	9	7	8	9	10	4	5	7	8	10

4, 5 Luxury Package on SE and Hybrid SE 6 Appearance Package on SE and Hybrid SE 9 Terracotta Package on SE, Titanium, Hybrid SE and Hybrid Titanium
10 Brick Red Leather Package on Titanium, Hybrid Titanium and Fusion Energi Titanium

¹Additional charge.
Colors are representative only. See your dealer for actual paint/trim options.

Bring these colors to life





SE in Ruby Red Tinted Clearcoat Metallic accessorized with 18" Sparkle Nickel-painted aluminum wheels, molded splash guards, smoked side window deflectors and rear decklid spoiler

Illuminated door sill plates

All-weather floor mats

Remote Access

Roof rack and roof-mounted bike carrier by THULE®¹

Exterior

- Body kit^{1,2}
- Flat splash guards
- Full vehicle covers¹
- Hood protector¹
- Racks and carriers¹
- Rear bumper protector
- Rear spoiler¹
- Wheel lock kit

Interior

- Ash cup/coin holders
- Auto-dimming rearview mirror
- Cargo organizers and protectors
- Carpeted floor mats
- Charge cord bag^{1,3}
- Charge door decal³
- Interior light kit
- Stainless steel door sill plates
- Tablet cradle¹

Electronics

- Bumper-mounted warning sensor systems¹
- Keyless entry keypad
- Portable DVD rear-seat entertainment systems¹
- Remote start systems
- Vehicle Security System
- Wireless charging¹

Learn more about
your Fusion



2015
**FUSION+HYBRID
FUSION ENERGI**



Go Further

ford.com

New Vehicle Limited Warranty. We want your Ford Fusion ownership experience to be the best it can be. Under this warranty, your new vehicle comes with 3-year/36,000-mile bumper-to-bumper coverage, 5-year/60,000-mile Powertrain Warranty coverage, 5-year/60,000-mile safety restraint coverage, and 5-year/unlimited-mile corrosion (perforation) coverage – all with no deductible. Fusion unique electric components are covered during the Hybrid/Electric Unique Component Coverage, which lasts for 8 years or 100,000 miles, whichever occurs first. Please ask your Ford Dealer for a copy of this limited warranty.

Roadside Assistance. Covers your vehicle for 5 years or 60,000 miles, so you have the security of knowing that help may be only a phone call away should you run out of fuel, lock yourself out of the vehicle or need towing. Your Ford Dealer can provide complete details on all of these advantages.

Ford Credit. Get the ride you want. Whether you plan to lease or finance, you'll find the choices that are right for you at Ford Credit. Ask your Ford Dealer for details or check us out at fordcredit.com.

Ford Extended Service Plan. For a purchase or lease, the Ford Extended Service Plan (ESP) gives you peace-of-mind protection designed to cover key vehicle components and protect you from the cost of unexpected repairs. Ask your dealer for a Ford ESP, the only service contract backed exclusively by Ford and honored at all Ford Lincoln dealerships.

Insurance Services. Get Ford Motor Company quality in your auto insurance. Our program offers industry-leading benefits and competitive rates. Call 1-877-367-3847, or visit us at fordvip.com for a no-obligation quote. Insurance offered by American Road Services Company (in CA, American Road Insurance Agency), a licensed agency and subsidiary of Ford Motor Company.

Ford Original Accessories will be warranted for whichever provides you the greatest benefit: 24 months/unlimited mileage, or the remainder of your Bumper-to-Bumper 3-year/36,000-mile New Vehicle Limited Warranty. Ford Licensed Accessories (FLA) are warranted by the accessory manufacturer's warranty. FLA are designed and developed by the accessory manufacturer and have not been designed or tested to Ford Motor Company engineering requirements. Contact your Ford Dealer for details and/or a copy of all limited warranties.

Comparisons based on competitive models (Fusion class is Midsize Sedans; Fusion Hybrid class is Midsize Hybrid Sedans; Fusion Energi class is Midsize Plug-In Hybrid Sedans), publicly available information and Ford certification data at time of release. Vehicles may be shown with optional equipment. Features may be offered only in combination with other options or subject to additional ordering requirements/limitations. Dimensions shown may vary due to optional features and/or production variability. Information is provided on an "as is" basis and could include technical, typographical or other errors. Ford makes no warranties, representations, or guarantees of any kind, express or implied, including but not limited to, accuracy, currency, or completeness, the operation of the information, materials, content, availability, and products. Ford reserves the right to change product specifications, pricing and equipment at any time without incurring obligations. Your Ford Dealer is the best source of the most up-to-date information on Ford vehicles.

After trial period expires, SiriusXM Satellite Radio, SiriusXM Traffic and Travel Link subscriptions are sold separately or as a package and are continuous until you call SiriusXM to cancel. See SiriusXM Customer Agreement for complete terms at www.siriusxm.com. SiriusXM Traffic and Travel Link available in select markets. For more information, see www.siriusxm.com/travellink or www.siriusxm.com/traffic. Sirius, XM and all related marks and logos are trademarks of Sirius XM Radio Inc. HD Radio is a proprietary trademark of iBiquity Digital Corp. iHeartAuto is a trademark owned by Clear Channel Broadcasting, Inc. All third party uses are authorized under license. iPod and iTunes are trademarks of Apple Inc., registered in the U.S. and other countries. PANDORA, the PANDORA logo, and the Pandora trade dress are trademarks or registered trademarks of Pandora Media, Inc. Used with permission. REPREVE is a registered trademark of Unifi, Inc. Sony is a registered trademark of the Sony Corporation. The Bluetooth word mark is a trademark of the Bluetooth SIG, Inc. THULE is a registered trademark of Thule Sweden AB.

Follow Ford:

