



2015  
**SUPER DUTY<sup>®</sup>**





# TOUGH KEEPS GETTING TOUGHER.

The 2015 Ford F-Series Super Duty is setting the standard for other heavy-duty pickups to follow. Yet again. From increased capabilities to improved power and performance to beefier underpinnings and beyond, this Super Duty takes Built Ford Tough® to new extremes, so you can get more work done than ever before.

**A new 31,200-lb. max. towing capability** on F-450<sup>1</sup> is not only best-in-class,<sup>2</sup> it's a whopping 8,000 lbs. more than comparable Chevy trucks and 1,200 lbs. more than Ram. F-450 also offers you a class-leading 40,000-lb. GCWR!<sup>1</sup>

**Best-in-class diesel hp and torque** also increase this year, while best-in-class fuel economy<sup>3</sup> is maintained on pickups powered by our Second-Generation 6.7L Power Stroke® V8 Turbo Diesel engine.<sup>4</sup>

**America's best-selling truck for 37 years,** Ford F-Series is engineered to help you get the job done when no one else can. Construction. Heavy Hauling. Emergency Vehicles. Agriculture. Forestry. Utility Services. Within these and countless other essential industries, the guys who do the toughest work count on one heavy-duty truck more than any other<sup>5</sup> – Ford Super Duty.



F-450 LARIAT Crew Cab 4x4. Tuxedo Black. Available equipment.

<sup>1</sup>When properly equipped. Available Summer 2014. <sup>2</sup>Class is Full-Size Pickups over 8,500 lbs. GVWR. <sup>3</sup>Based on Ford simulated city-suburban drive-cycle tests of comparably equipped 2015 Ford and 2011-2013 competitive models, consistent with SAE Standard J1321. <sup>4</sup>Available feature. <sup>5</sup>Percentages based on Polk U.S. heavy-duty pickup and class 2-5 conventional chassis cab combined new registrations (2011 CYE-2012 CYTD JUNE) within listed vocations. Vehicles throughout this brochure may be shown with optional and aftermarket upfit equipment.

2015 **SUPER DUTY**  
ford.com







## STRENGTHEN YOUR TEAM WITH PROVEN WORKHORSES.

For 2015, F-Series Super Duty comes in your choice of 3 capable models: F-250, F-350, and the max. towing leader, F-450<sup>1</sup>. Trim choices include: XL, XLT, LARIAT, a newly redesigned KING RANCH,<sup>2</sup> and our top-of-the-line PLATINUM.

**With the most configurations** in its class, there's a Super Duty just right for you. Plus, you can rest assured it's built on a foundation engineered to last. There are more F-Series trucks on the road with 250,000+ miles than any other brand.<sup>2</sup>

### F-250

#### Maximum Capabilities<sup>3</sup>

16,800-lb. Towing  
4,240-lb. Payload  
10,000-lb. GVWR  
23,500-lb. GCWR

#### Equipment Configurations

6.2L Gas V8 or 6.7L Power Stroke<sup>®</sup> V8 Turbo Diesel  
Single Rear Wheel 4x2 or 4x4  
Regular Cab, SuperCab or Crew Cab;  
6¾' or 8' Box

### F-350

#### Maximum Capabilities<sup>3</sup>

26,700-lb. Towing  
7,260-lb. Payload  
14,000-lb. GVWR – UNSURPASSED  
35,000-lb. GCWR

#### Equipment Configurations

6.2L Gas V8 or 6.7L Power Stroke V8 Turbo Diesel  
Single Rear Wheel or Dual Rear Wheel;  
4x2 or 4x4  
Regular Cab, SuperCab or Crew Cab;  
6¾' or 8' Box

### F-450<sup>1</sup>

#### Maximum Capabilities<sup>3</sup>

31,200-lb. Towing – BEST IN CLASS  
5,450-lb. Payload  
14,000-lb. GVWR – UNSURPASSED  
40,000-lb. GCWR – BEST IN CLASS

#### Equipment Configurations

6.7L Power Stroke V8 Turbo Diesel  
Dual Rear Wheel 4x4  
Crew Cab with 8' Box

F-250 XL Regular Cab 4x2. Oxford White. F-350 LARIAT SuperCab 4x4. Tuxedo Black. F-450 LARIAT Crew Cab 4x4. White Platinum. Available or aftermarket equipment shown on each.

<sup>1</sup>Available Summer 2014. <sup>2</sup>Based on vehicle registration data and latest odometer readings available to R. L. Polk & Co. for 1992 and newer model year full-size pickups still on the road in the U.S. as of 4/1/13. <sup>3</sup>When properly equipped.

2015 **SUPER DUTY**  
ford.com







## DO MORE THAN EVER WITH THE DIESEL LEADER.

Designed, engineered and built by Ford, our Second-Generation 6.7L Power Stroke® V8 Turbo Diesel engine<sup>1</sup> produces more power and torque than ever.

**Best-in-class 440 hp and 860 lb.-ft. of torque** are facilitated in part by a new larger turbocharger, which helps improve airflow and performance. You'll really appreciate it when towing heavy loads uphill and at high altitudes.

**Best-in-class diesel fuel economy<sup>2</sup>** is maintained with the help of new high-pressure fuel injectors that achieve a more efficient, cleaner burn.

**Proven in over 12 million miles** of cumulative testing and real-world use under extreme conditions, this B20-capable engine is the most tested Power Stroke diesel ever. From 120°F scorching heat to -40°F bone-chilling cold. Rest assured, it's Built Ford Tough.®



<sup>1</sup>Available feature. <sup>2</sup>Based on Ford simulated city-suburban drive-cycle tests of comparably equipped 2015 Ford and 2011-2013 competitive models, consistent with SAE Standard J1321.





## RULE THE CLASS WITH 6.2L V8 GAS.

The Built Ford Tough® 6.2L 2-valve V8 gives you the most power and torque of any standard gas engine in the class: 385 hp and 405 lb.-ft. of torque! Designed, engineered, built and torture-tested by Ford, this state-of-the-art E85-capable engine is the standard powerplant on F-250 and F-350.

**Alternative fuel options** include a CNG/LPG Gaseous Engine Prep Package that readies your truck to be upfit for compressed natural gas (CNG), liquefied petroleum gas (LPG), or as a bi-fuel vehicle with the ability to seamlessly switch between CNG or LPG and gasoline.

**Providing flexibility and extended range**, trucks upfit to a bi-fuel system include a tank for each type of fuel. Contact your local Ford Dealer for ordering details. By purchasing a Super Duty upfit for CNG or LPG, you may even qualify for state incentives related to alternative-fuel use, infrastructure or vehicles. Visit [www.afdc.energy.gov/afdc/laws](http://www.afdc.energy.gov/afdc/laws) for details.

**FLEX FUEL**



2015 SUPER DUTY® CHASSIS CAB  
[ford.com](http://ford.com)

*F-250 XLT SuperCab 4x4. Vermillion Red. Chrome Package. Available equipment.*

<sup>1</sup>85 hp and 405 lb.-ft. of torque, 10,000 lbs. GVWR and under. 316 hp and 397 lb.-ft. of torque, 10,001 lbs. GVWR and over.



# CHOOSE YOUR POWER — WISELY.

Diesel or gas. Either way, your Super Duty comes with a rugged TorqShift® 6-speed SelectShift® automatic transmission designed, engineered and built by the Ford powertrain team.

**Both engines run efficiently** at low rpm thanks in part to low-speed lockup capability (down to 900 rpm) on the transmission's torque converter.

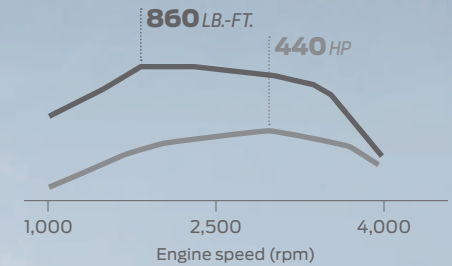
**Durable construction**, including a high-strength sinter-metal carrier with patented Ford rocker one-way clutch, helps the transmission easily manage the extreme low-end torque of the diesel engine, and the high speeds of the gas engine.

**Extended 150,000-mile intervals** for fluid and filter changes are courtesy of the transmission's high-capacity, high-efficiency fluid filter. The 2015 Super Duty is Built Ford Tough® for the long haul.

## 2nd-Generation 6.7L Power Stroke® V8 Turbo Diesel

**Get more power and torque** with the diesel engine this year. A new exhaust temperature sensor allows it to operate at max. capability, while a larger turbocharger helps it efficiently generate the best hp and torque in the class.

**Power upfits any time**, whether the truck is in motion or at a complete stop. Our class-exclusive live-drive power take-off (PTO) provision<sup>1</sup> lets you power upfits whenever the diesel engine is running. It keeps the job going with an output gear linked directly to the engine crankshaft.

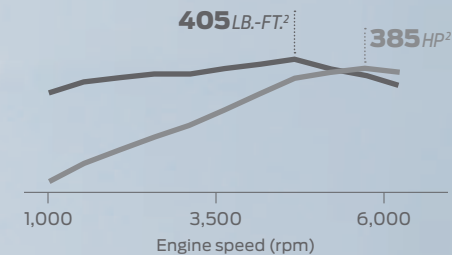


## 6.2L 2-Valve V8 Gas

**Ease your heavy-duty workload** with lots of low-rpm torque. The gas engine's stiff SOHC valvetrain with roller-rocker shafts enables an intake- and exhaust-port layout that optimizes airflow, helping it produce plenty of torque down low.

**Count on the iron-clad durability** of the gas engine block. It features reliable cast-iron construction with 4-bolt main bearing caps, including 2 additional cross bolts.

**Enjoy the balanced performance** of the gas engine's dual-equal variable cam timing. It phases the intake- and exhaust-valve opening and closing events simultaneously to optimize fuel economy, low-end torque and peak horsepower. Using 2 spark plugs per cylinder also helps the fuel-air mixture burn efficiently, contributing to fuel economy and engine torque.



F-250 XL Crew Cab 4x4. Oxford White. Available equipment.

<sup>1</sup>Available feature. <sup>2</sup>405 lb.-ft. of torque and 385 hp, 10,000 lbs. GVWR and under. 397 lb.-ft. of torque and 316 hp, 10,001 lbs. GVWR and over.

2015 **SUPER DUTY**  
ford.com



# PULL THE MOST – CONFIDENTLY.

Ford F-Series Super Duty is the only truck in its class offering you up to 31,200 lbs.<sup>1</sup> of max. towing capability.

**To help you handle all that weight,** Super Duty utilizes trailer sway control. The system monitors the motions of the truck to detect trailer sway and selectively brakes as needed,<sup>2</sup> helping you maintain control of the truck and the trailer.

**When negotiating an incline,** whether in Drive or Reverse, standard hill start assist helps you out by momentarily maintaining brake pressure until the engine delivers enough torque to move the truck uphill.

**Less manual braking** is required of drivers on diesel models for 2015 thanks to improvements in engine braking performance. The diesel's new larger turbocharger provides more engine-exhaust braking power for improved grade descent control with less wear and tear on the wheel brakes and transmission. Engine-exhaust braking includes a new manual push-button control on the instrument panel this year as well. Like all the best leaders, Super Duty just keeps on improving.

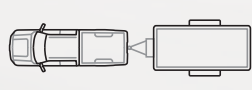


**CLASS-BEST  
MAX. TOWING**



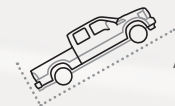
**31,200 LBS.<sup>1</sup>**

CONTROLS



SWAY

HILL START



ASSIST

*F-450 KING RANCH® Crew Cab DRW 4x4. Bronze Fire. Monochromatic Paint Package. Available equipment.*

<sup>1</sup>When properly equipped. Available Summer 2014. <sup>2</sup>Remember that even advanced technology cannot overcome the laws of physics. It's always possible to lose control of a vehicle due to inappropriate driver input for the conditions.

2015 **SUPER DUTY**  
ford.com







## HIT THE GROUND TOWING.

Thanks to our 5th-Wheel/Gooseneck Trailer Tow Prep Package and Ford Custom Accessories 5th-Wheel and Gooseneck Hitch Kits<sup>1</sup> by Reese,<sup>®</sup> your Super Duty can arrive ready to tow – right from the factory. Plus, you'll get the strength of an under-the-bed-frame crossmember<sup>2</sup> and the utility of a flat cargo bed floor.

**Guidelines help you line up** with your trailer using the full-color rear view camera<sup>2</sup> image displayed in your rearview mirror or on the 8" MyFord Touch<sup>®2</sup> screen.

**For an easier towing experience** overall, Super Duty offers class-exclusive features like an in-bed 7-pin connector<sup>2</sup> and PowerScope<sup>®</sup> trailer tow mirrors.<sup>2</sup> There's even a factory-installed, integrated trailer brake controller<sup>2</sup> to balance the performance of the truck's brakes and electric trailer brakes.<sup>3</sup> And the LCD productivity screen<sup>2</sup> offers a pre-towing checklist and recalls settings for different trailers. Ready, set, tow.

<sup>1</sup>5th-Wheel Hitch available with 8' box only. See your Ford Dealer for details. <sup>2</sup>Available feature. <sup>3</sup>Trailer brake controller verified to be compatible with electrically actuated drum brakes and certain electric-over-hydraulic brake systems. See your Ford Dealer for details.



# MANAGE YOUR PAYLOADS WITH EASE.

With its range of maximum payload capabilities, plus all the right tools for loading, accessing and managing your cargo, Super Duty is built to help you work smarter.

**Walk up into the bed** with our class-exclusive tailgate step! Just open the tailgate, drop the skid-resistant step down, flip the grab bar up and go.

**To help increase your confidence** while hauling heavy loads, Super Duty features AdvanceTrac® with class-exclusive RSC® (Roll Stability Control™). It utilizes 2 gyroscopic sensors to automatically help you avoid skidding and fishtailing, and help you keep all 4 wheels firmly planted.<sup>2</sup> You'll find it particularly beneficial in inclement weather.



MAX. PAYLOAD  **7,260 LBS.<sup>3</sup>**

ROLL STABILITY  CONTROL<sup>2</sup>

TORSION SPRING  TAILGATE ASSIST

F-350 LARIAT Crew Cab 4x4. White Platinum. High-Capacity Trailer Tow Package. Available equipment.

<sup>1</sup>Available feature. <sup>2</sup>SRW models only. Engine-only traction control on DRW models. Remember that even advanced technology cannot overcome the laws of physics. It's always possible to lose control of a vehicle due to inappropriate driver input for the conditions. <sup>3</sup>When properly equipped. F-350 DRW Regular Cab 4x2.

2015 **SUPER DUTY**  
ford.com





## PERSONALIZE YOUR CONTROL.

Voice-activated Ford SYNC<sup>®1</sup> with 911 Assist<sup>®</sup> delivers hands-free calls, music and more with simple voice commands. Once paired with your phone, it can download your contacts and play Bluetooth<sup>®</sup>-streaming music. Or, plug in your MP3 player, USB or iPod<sup>®</sup> to listen to your favorites.

**Add an 8" color LCD touch screen,** closable dash-top storage with a media hub, and more when you opt for SYNC with MyFord Touch.<sup>®1</sup> This voice-activated system also includes knobs and buttons below the 8" screen.

| SYNC

**SiriusXM<sup>2</sup> lets you enjoy commercial-free music,** plus sports, news, entertainment, and every premium channel with your 6-month All-Access trial subscription.<sup>3</sup> The voice-activated Navigation System<sup>2</sup> also includes a 5-year subscription to SiriusXM Traffic and SiriusXM Travel Link services.<sup>2</sup> These features provide detailed traffic information on accidents, construction, and road closures, plus local and national weather forecasts, fuel prices and more.

((SiriusXM))



LARIAT 4x4. Charcoal Black interior. Available equipment.

<sup>1</sup>Available feature. Driving while distracted can result in loss of vehicle control. Only use SYNC/MyFord Touch/other devices, even with voice commands, when it is safe to do so. Some features may be locked out while the vehicle is in gear. Not all features are compatible with all phones. <sup>2</sup>Available feature. <sup>3</sup>Trial subscription also includes access to SiriusXM Internet Radio on your computer, smartphone or tablet. Satellite and Internet Radio lineups vary slightly.

2015 **SUPER DUTY**  
ford.com







## RIDE IN STYLE – THE NEW KING RANCH.

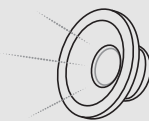
Your hard work and success deserve recognition. Introducing the new Super Duty KING RANCH.<sup>®1</sup> Rugged. Refined. And steeped in its own uniquely American hardworking heritage.

**At the legendary King Ranch in Texas**, leatherwork is performed by artisans. Our relationship with them inspired the design of this handsome new interior featuring antiqued Mesa Brown leather trim with accent stitching, woodgrain accents and the exclusive KING RANCH “Running W.”

**Quickly recall your personalized settings** for the 10-way power driver’s seat, power-adjustable brake and accelerator pedals, and even the power trailer tow mirrors, with the convenient memory feature.

**Take your pick of exterior designs** on KING RANCH this year: Caribou two-tone painted exterior accents or Monochromatic Paint and Chrome Packages. For full details on the new KING RANCH and every other Super Duty model, please explore the Specifications section of this brochure.

HEATED/COOLED FRONT SEATS<sup>2</sup>



AUDIO SYSTEM FROM SONY<sup>®2</sup>

HEATED



STEERING<sup>2</sup>

*KING RANCH Crew Cab 4x4. Antiqued Mesa Brown leather trim. Black interior. Available equipment.*

<sup>1</sup>Late availability. <sup>2</sup>Available feature.

2015 **SUPER DUTY**  
ford.com







## INCREASE YOUR PRODUCTIVITY.

From electronics to cargo and beyond – Super Duty® streamlines your workday.

**Outside, you'll find rugged features** like the industrial-grade Tough Bed® factory-installed, spray-in bedliner<sup>1</sup> that helps shield your investment. And a stowable bed extender,<sup>1</sup> made of rugged fiberglass-reinforced polypropylene, that lets you haul more with the tailgate down or secure smaller loads with it up.

**Inside, lots of storage space** helps keep your gear secure, yet within easy reach. A closable dash-top area houses the SYNC® with MyFord Touch®<sup>1</sup> media hub. There's lockable under-seat storage in the center of the 40/20/40 split front seat<sup>1</sup> and beneath the 60/40 split flip-up/fold-down rear bench seat<sup>1</sup> on certain Crew Cab models. The flow-through center console<sup>1</sup> holds hanging files and features a 110-volt power outlet and two 12-volt powerpoints. Power up in Super Duty.

<sup>1</sup>Available feature.



#### Front Suspension

Twin-I-Beam (F-250/F-350 4x2); solid Twin-Coil Monobeam axle (F-250/F-350/F-450 4x4)  
Axle (rating @ ground) –  
5,250 lbs. (F-250/F-350 4x2);  
5,600 lbs. (F-250/F-350 with 3.31 axle);  
6,000 lbs. (F-250/F-350/F-450 4x4)  
Springs – Coil  
Shock absorbers – 1.38" gas type  
Stabilizer bar – Standard

#### Rear Suspension

Solid axle  
Axle (rating @ ground) –  
6,200 lbs. (F-250); 7,280 lbs. (F-350 SRW);  
9,650 lbs. (F-350 DRW/F-450)  
Springs – Leaf  
Shock absorbers – 1.38" gas type  
Stabilizer bar – Standard on DRW;  
optional in package on SRW

#### Steering

Assist – Power  
Overall ratio – 20.49:1 (F-250/F-350 4x2);  
20.4:1 (F-250/F-350 4x4);  
17.8:1 average (F-450)

#### Brakes

Power 4-wheel vented-disc  
with ABS (standard)  
Rotor diameter (front/rear) – 14.29"/14.29"  
(F-250/F-350); 14.53"/15.35" (F-450)

#### Wheels

Steel or aluminum  
Size – 17", 18" or 20" (F-250/F-350); 19.5" (F-450)  
Number of studs – 8 (F-250/F-350); 10 (F-450)  
Bolt-circle diameter – 6.69" (170-mm) SRW;  
7.87" (200-mm) F-350 DRW;  
8.86" (225-mm) F-450

# CONQUER THE TOUGHEST TERRAIN.

Thanks in part to a heavy-duty independent Twin-I-Beam suspension on Super Duty 4x2s and a rugged twin-coil monobeam setup on 4x4s.

**F-450<sup>1</sup> gets even more capable this year** with significant equipment upgrades, including a more robust rear axle, new rear leaf springs, new front and rear stabilizer bars and shocks, and new rear driveline U-joints. It also gets stronger steering gears and linkages, plus an upgraded braking system that includes larger, more capable brakes and enhanced anti-lock brake calibration.

**The turn of a dial** on the instrument panel is all it takes to change drive settings on Super Duty 4x4s featuring convenient electronic shift-on-the-fly operation.<sup>2</sup>

**Get real-time feedback** with our class-exclusive off-road display. Included with the LCD productivity screen<sup>2</sup> on SRW trucks, it monitors the truck's pitch angle, bank angle and wheel direction.

**Increase your off-road confidence** with Hill Descent Control,<sup>TM3</sup> which helps maintain the truck's speed on steep declines, so you can concentrate on maneuvering. It's included in the FX4 Off-Road Package, along with transfer case and fuel tank skid plates, Rancho<sup>®</sup> shocks and box-side decals.

**For maximized gripping power**, our electronic-locking rear differential<sup>2</sup> uses a true mechanical dog-clutch mechanism to lock the rear axle shafts together so they turn at the same speed. Go further in a Super Duty 4x4.



F-350 LARIAT Crew Cab 4x4. Blue Jeans/Magnetic two-tone. Chrome Package. Available equipment.

<sup>1</sup>Available Summer 2014. <sup>2</sup>Available feature. <sup>3</sup>SRW models only.

2015 **SUPER DUTY**  
ford.com





# SUPER DUTY SPECIFICATIONS



## POWERTRAINS

	<b>2nd-Generation 6.7L Power Stroke® V8 Turbo Diesel</b>	<b>6.2L 2-Valve V8 Gas<sup>1</sup></b>
Configuration	OHV (32-valve)	SOHC
Fuel injection	High-pressure common-rail	Sequential electronic
Control system	Electronic	Electronic
Induction system	Single-sequential turbocharger; charged air cooler	Specially tuned
Battery	Dual 12-volt; 750-CCA/78-amp-hr	12-volt; 650-CCA/72-amp-hr
Alternator	157-amp (single 200-amp or dual combined 357-amp, optional)	157-amp (single 200-amp, optional)
Cooling system	Pressurized series flow	Pressurized series flow
Oil-life monitor	Intelligent Oil-Life Monitor®	Oil-minder system
Cylinders	8	8
Cylinder heads	Aluminum	Aluminum
Block material	Compacted graphite iron	Cast iron
Valve operation	Push rod/rocker arms	Roller-rocker shaft
Camshaft drive	Gear	Silent chain
Bore/stroke	3.90"/4.25"	4.02"/3.74"
Compression ratio	16.2:1	9.8:1
Horsepower @ rpm	440 @ 2,800	385 @ 5,500/316 @ 4,179 <sup>2</sup>
Torque lb.-ft. @ rpm	860 @ 1,600	405 @ 4,500/397 @ 4,179 <sup>2</sup>
Recommended fuel	Ultra-low-sulfur diesel or B20 (containing 20% or less biodiesel)	Regular unleaded or E85 Bi-fuel capable LPG or CNG (requires upfit)

**Transmission**  
6-speed SelectShift® automatic

**Case Material**  
Aluminum

**PTO<sup>3</sup>**  
Live-drive access on driver's side (Turbo Diesel only)

### Gear Ratios

1st – 3.97:1  
2nd – 2.31:1  
3rd – 1.51:1  
4th – 1.14:1  
5th – 0.85:1  
6th – 0.67:1  
Reverse – 3.12:1

## STANDARD FEATURES

### Mechanical

97,500-mile tune-up interval<sup>4</sup> (gas engine)  
Battery saver  
Conventional spare tire/wheel/jack with underframe carrier (crank-down type)  
Engine-only traction control (EOTC) (DRW only)  
Fail-Safe Engine Cooling System (gas engine)  
Fuel tank – 26-gallon capacity (F-250/F-350 137", 142" and 156" WB with diesel engine)  
Fuel tank – 35-gallon capacity (gas engine)  
Fuel tank – 37.5-gallon capacity (F-250/F-350 158" and 172" WB with diesel engine, and F-450)  
Hill start assist  
Jack – 2-ton mechanical with SRW, 4-ton hydraulic with DRW  
Power steering  
Stabilizer bar – Front  
Stabilizer bar – Rear (DRW only)  
Stainless steel exhaust system (major components)  
Stationary elevated idle control (SEIC)<sup>5</sup>  
Steering damper  
Tailgate – Removable with lock and tailgate assist  
Tire Pressure Monitoring System (SRW only; excludes spare)

Trailer hitch receiver – 12.5K (2") Built Ford Tough® (SRW with gas engine; SRW with diesel engine and 137" and 142" WB)

Trailer hitch receiver – 14K (2.5") Built Ford Tough (SRW with diesel engine and 156", 158" and 172" WB)

Trailer hitch receiver – 15K (2.5") Built Ford Tough (DRW with 156" and 158" WB; DRW with gas engine and 172" WB)

Trailer hitch receiver – 18.5K (2.5") Built Ford Tough (F-350 DRW with diesel engine and 172" WB; F-450)

Trailer hitch receiver – 2" sleeve reducer (vehicles with 2.5" receiver)

Trailer sway control

### Interior

Assist and ride handles  
Coat hooks – 1 (Regular Cab); 2 in rear of cab (SuperCab and Crew Cab)  
Dome light/map lights (front and rear with Crew Cab)  
MyKey®  
Overhead console with garage door opener storage and sunglasses storage (SuperCab and Crew Cab)  
Powerpoints – 12-volt, 2 on instrument panel  
Windows – Flip-open rear quarter (SuperCab)

### Exterior

7-/4-pin trailer tow connector  
Bumpers – Front and rear step  
Cargo box – Black box top and tailgate moldings  
Cargo box – Cargo tie-down hooks (4 in 6¾' box; 6 in 8' box)  
Cargo box – Integrated lamp with center high-mounted stop lamp  
Cargo box – Partitionable and stackable with stake pockets  
Dual-beam jewel-effect headlamps  
Intelligent 3-blink turn signal  
Roof clearance lamps (DRW)  
Underhood service lamp  
Windshield wipers – Intermittent

### Safety & Security

AdvanceTrac® with RSC® (Roll Stability Control™) (SRW only)  
Airbags<sup>6</sup> – Driver and right-front-passenger front  
Airbags<sup>6</sup> – Front-seat side  
Airbags<sup>6</sup> – Safety Canopy® System with roll-fold side-curtain airbags  
Belt-Minder® front safety belt reminder  
Brake/shift interlock  
Brakes – Power 4-wheel vented-disc with Anti-Lock Brake System (ABS)  
Child-safety-seat top tether anchors (Regular Cab front passenger and all rear-seat positions)  
Fuel pump inertia shutoff switch  
Headlamps-on, key-in-ignition and door ajar alert chimes  
Passenger airbag deactivation switch (Regular Cab, SuperCab)  
Safety belts – Energy-management retractors at front-outboard positions  
Safety belts – Height-adjustable at front-outboard positions  
SecuriLock® Passive Anti-Theft System  
Side-intrusion door beams  
SOS Post-Crash Alert System™  
Spare tire/wheel lock

<sup>1</sup>Certified to SAE J1349. <sup>2</sup>405 lb.-ft. of torque and 385 hp, 10,000 lbs. GVWR and under. 397 lb.-ft. of torque and 316 hp, 10,001 lbs. GVWR and over. <sup>3</sup>Available feature. <sup>4</sup>Under normal driving conditions with routine fluid and filter changes. <sup>5</sup>Final-stage manufacturer must supply control switches. <sup>6</sup>Always wear your safety belt and follow airbag warning label instructions.







F-250 XL Regular Cab 4x2. Magnetic. XL Appearance Package. Available equipment.



XL Regular Cab. Steel HD vinyl trim. XL Appearance Package. Available equipment.

Includes all standard features, plus:

**Mechanical**

- 6.2L SOHC 2-valve Gas V8 Flex Fuel E85-capable engine (n/a on F-450)
- 6.7L Power Stroke® V8 Turbo Diesel B20-capable engine (standard on F-450)
- TorqShift® heavy-duty 6-speed SelectShift® automatic transmission
- Alternator – 157-amp heavy-duty
- Integrated trailer brake controller (DRW)
- Manual 4-Wheel-Drive System with manual locking hubs (4x4 models only)
- Trailer brake wiring kit (in-cab, no controller, SRW only)
- 17" argent-painted steel wheels with painted center caps (F-250/F-350 SRW)
- 17" argent-painted steel wheels (F-350 DRW)
- 19.5" polished forged-aluminum wheels (F-450)
- LT245/75R17 all-season BSW tires – 5 on SRW/7 on DRW (F-250/F-350)
- 225/70R19.5 all-season BSW tires – 6 (F-450)

**Seating**

- 40/20/40 split front seat with armrest, cupholders and storage
- 60/40 split flip-up rear seat (SuperCab only)
- 60/40 split flip-up/fold-down rear bench seat with outboard and center head restraints (Crew Cab only)
- HD vinyl seats
- Manual lumbar support for driver's seat

**Interior**

- AM/FM stereo with digital clock and 2 speakers
- Air conditioning
- Climate controls – Manual
- Door locks – Manual
- Flooring – Black vinyl

- Message center – Multifunction plus trip computer includes odometer, trip odometer, engine oil monitor, engine-hour meter, engine-idle meter (gas engine only), distance to empty, average fuel economy, warning messages, system check, language selection and Ice Blue® Lighting
- Mirror – Manual day/night rearview
- Steering column – Manual tilt/telescoping
- Steering wheel – Black urethane with 3-button message center controls
- Visors with passenger mirror
- Window – Rear, fixed-glass
- Windows – Manual

**Exterior**

- Bumpers – Black-painted with grained top cover
- Cab steps – 6" angular black molded (DRW only)
- Door handles – Black
- Glass – Solar-tinted
- Grille – Black
- Mirrors – Manually telescoping trailer tow with 2-way fold and manual glass
- Tow hooks – Black, 2 in front

**Available Options**

**Mechanical**

- 6.7L Power Stroke V8 Turbo Diesel B20-capable engine (standard on F-450)
- Electronic shift-on-the-fly (ESOF) 4-Wheel-Drive System with auto/manual locking hubs (4x4 models only)

- 5th-wheel hitch kit (requires 8' box; includes 18K hitch on SRW or 26.5K hitch on DRW)<sup>1</sup>
- Gooseneck hitch kit<sup>1</sup>
- Alternator – Single, 200-amp extra-heavy-duty
- Alternators – Dual, 357-amp total (diesel engine only)
- Engine block heater (standard in 15 cold-weather states)
- Engine idle shutdown (diesel engine only; restrictions apply)
- Integrated trailer brake controller (standard on DRW)
- Operator-commanded exhaust filter regeneration (diesel engine only)
- Power take-off (PTO) provision allows transmission-mounted live-drive and stationary modes (diesel engine only)
- Rear axle – Electronic-locking (F-250/F-350 SRW only)
- Rear axle – Limited-slip (F-350 DRW only; standard on F-450)
- 17" 6-spoke cast-aluminum wheels – 4 (F-250/F-350 SRW)
- 17" polished forged-aluminum wheels – 4 (F-350 DRW)
- 18" argent-painted steel wheels – 4 (F-350 SRW)
- Stainless steel wheel covers (requires 17" argent-painted steel DRW wheels)<sup>2</sup>
- LT245/75R17 all-terrain BSW tires – 5 (F-250/F-350)
- LT265/70R17 all-terrain OWL tires – 4 (F-250/F-350 SRW)

- LT275/65R18 all-season BSW tires – 5 (F-350 SRW)
- LT275/70R18 all-terrain BSW tires – 4 (F-350 SRW 4x4)

**Seating**

- 40/20/40 split cloth front seat with armrest, cupholders and storage
- 40/mini-console/40 front bucket seats (HD vinyl or cloth)

**Interior**

- Ford SYNC® voice-activated, in-vehicle connectivity system with SYNC AppLink™ (requires XL Value Package or XL Appearance Package, and steering wheel-mounted audio controls)
- Rapid-heat supplemental cab heater (requires diesel engine and alternator upgrade)
- Remote Start System (requires Power Equipment Group)
- Steering wheel-mounted audio controls (requires SYNC)
- Upfitter switches located on instrument panel (4)

**Exterior**

- Bed mat (restrictions apply)
- Bedliner – Plastic drop-in
- Bedliner – Tough Bed® spray-in includes tailgate guard and black bed bolts
- Cab steps – 6" angular black molded (standard on DRW)
- Cable Lock by Master Lock®<sup>2</sup>
- Crew Chief™ powered by Telogis®<sup>2</sup> – Fleet tracking system (includes 1 year of Crew Chief service)
- Exterior backup alarm<sup>2</sup>
- Pickup box delete (F-250/F-350 only; requires 8' box; n/a with 20" wheels or FX4 Off-Road Package)
- Roof clearance lamps (standard on DRW)
- Skid plates – Transfer case and fuel tank (4x4 only)
- Soft roll-up tonneau cover<sup>2</sup>
- Splash guards (front and rear on SRW; rear only on DRW)
- Tailgate step includes step, tailgate assist and grab bar
- Wheel-well liners (SRW only)

**Available Packages**

- XL Appearance Package** (n/a with XL Value Package) includes AM/FM stereo/single-CD player with MP3 capability, digital clock, 4 speakers, cruise control, 17" argent-painted steel wheels with bright center caps (SRW only), chrome grille surround, and chrome bumpers

- XL Value Package** (n/a with XL Appearance Package) includes AM/FM stereo/single-CD player with MP3 capability, digital clock, 4 speakers, cruise control, 17" argent-painted steel wheels with bright center caps (SRW only), and chrome bumpers

- 5th-Wheel/Gooseneck Trailer Tow Prep Package** includes 1 under-bed-frame crossmember, 5 pickup bed 5th-wheel/gooseneck attachment points and close-out plugs, and an integrated 7-pin connector on the driver's side pickup bed wall
- 9,900-lb. GVWR Package** (F-250)

- 10,000-lb. GVWR Package** (F-350 SRW)
- 11,400-lb. GVWR Package** (F-350 SRW 4x4 and F-350 SRW SuperCab/Crew Cab 4x2 with 8' box; requires 18" wheels and diesel engine)

- Camper Package** (restrictions apply) includes front springs upgrade (unless maximum springs have been computer-selected as included equipment), rear stabilizer bar (SRW), slide-in-camper certification and auxiliary rear springs on F-250

- CNG/LPG Gaseous Engine Prep Package** (F-250/F-350 with gas engine only) includes hardened engine intake valves and valve seats and bi-fuel manifold

- FX4 Off-Road Package** (4x4 only; n/a on F-450; other restrictions apply) includes transfer case and fuel tank skid plates, Hill Descent Control™ (SRW only), Rancho® shocks and FX4 Off-Road box decals

- Heavy-Service Front Suspension Package** (restrictions apply) includes front springs upgrade (unless maximum springs have been computer-selected as included equipment)

- High-Capacity Trailer Tow Package** (F-350 Crew Cab DRW 172" WB 4x4 only; requires diesel engine and 4.30 limited-slip rear axle) includes max. front springs, wide track front axle, front fender flare moldings, and increased GCWR from 31,900 lbs. to 35,000 lbs.

- Power Equipment Group** includes power door locks and front windows (plus rear on Crew Cab) with front one-touch-up/down feature; manually telescoping trailer tow mirrors with 2-way fold, power/heated glass, heated manual spotter mirrors, and integrated clearance lamps and turn signal indicators; accessory delay; Remote Keyless Entry System with 2 integrated keypad transmitter remotes; and anti-theft perimeter alarm

- Snow Plow Prep Package** (4x4 only; restrictions apply) includes computer-selected springs for snow plow application and extra-heavy-duty alternator with diesel engine only



Argent-Painted Steel w/Painted Center Cap  
17" Standard: F-250/F-350 SRW  
18" Optional: F-350 SRW



17" Argent-Painted Steel w/Bright Center Cap  
Included: F-250/F-350 SRW w/Value Package or Appearance Package



17" Argent-Painted Steel Standard: F-350 DRW



17" Argent-Painted Steel w/Stainless Steel Cover  
Optional: F-350 DRW



17" Polished Forged-Aluminum  
Optional: F-350 DRW



17" 6-Spoke Cast-Aluminum  
Optional: F-250/F-350 SRW



19.5" Polished Forged-Aluminum  
Standard: F-450 DRW

<sup>1</sup>Requires 5th-Wheel/Gooseneck Trailer Tow Prep Package. See your dealer for details. <sup>2</sup>Ford Licensed Accessory. See your dealer for limited warranty details.



# XLT



F-350 XLT Crew Cab 4x4. Ingot Silver. XLT Premium Package. Available equipment.



XLT Crew Cab. Steel cloth trim. Flow-through center console. Available equipment.

Includes all XL features, plus:

## Mechanical

Integrated trailer brake controller (SRW)

18" cast-aluminum wheels (SRW)

LT275/65R18 all-season BSW tires – 5 (SRW)

## Seating

4-way adjustable driver and right-front-passenger head restraints

40/20/40 split front seat with center under-seat lockable storage with 12-volt powerpoint and center armrest with cupholders and storage

60/40 split flip-up/fold-down rear bench seat with bag hooks, dual integrated cupholders and tray, outboard head restraints, center head restraint, and lockable under-seat partitioned storage with 12-volt powerpoint (Crew Cab only)

Cloth seats

## Interior

AM/FM stereo/single-CD player with MP3 capability, digital clock, 4 speakers and auxiliary audio input jack

Ford SYNC® voice-activated, in-vehicle connectivity system with SYNC AppLink™

SiriusXM Satellite Radio with 6-month trial subscription

Accessory delay for power features

Cruise control

Door locks – Power

Flooring – Color-coordinated carpet

Flooring – Color-coordinated carpeted floor mats

Steering wheel – Black urethane with secondary audio, cruise and 3-button message center controls

Visors with covered driver and passenger mirrors

Windows – Power with front one-touch-up/-down feature

## Exterior

Anti-theft perimeter alarm

Bumpers – Chrome with grained top cover

Glass – Privacy (rear doors and rear window)

Grille – Chrome

Mirrors – Manually telescoping trailer tow with 2-way fold, power/heated glass, heated manual spotter mirrors, and integrated clearance lamps and turn signal indicators

Remote Keyless Entry System with 2 integrated keypad transmitter remotes

## Available Options

### Mechanical

6.7L Power Stroke® V8 Turbo Diesel B20-capable engine (standard on F-450)

Electronic shift-on-the-fly (ESOF) 4-Wheel-Drive System with auto/manual locking hubs (4x4 models only)

5th-wheel hitch kit (requires 8' box; includes 18K hitch on SRW or 26.5K hitch on DRW)<sup>1</sup>

Gooseneck hitch kit<sup>1</sup>

Alternator – Single, 200-amp extra-heavy-duty

Alternators – Dual, 357-amp total (diesel engine only)

Engine block heater (standard in 15 cold-weather states)

Engine idle shutdown (diesel engine only; restrictions apply)

Operator-commanded exhaust filter regeneration (diesel engine only)

Power take-off (PTO) provision allows transmission-mounted live-drive and stationary modes (diesel engine only)

Rear axle – Electronic-locking (F-250/F-350 SRW only)

Rear axle – Limited-slip (F-350 DRW; standard on F-450)

17" 6-spoke cast-aluminum wheels – 4 (F-250/F-350 SRW)

17" polished forged-aluminum wheels – 4 (F-350 DRW)

Stainless steel wheel covers (requires 17" argent-painted steel DRW wheels)<sup>2</sup>

LT245/75R17 all-season BSW tires – 5 (F-250/F-350 SRW)

LT245/75R17 all-terrain BSW tires – 5 (F-350 DRW)

LT245/75R17 all-terrain OWL tires – 4 (F-350 DRW)

LT265/70R17 all-terrain OWL tires – 4 (F-250/F-350 SRW)

LT275/70R18 all-terrain BSW tires – 4 (F-250/F-350 SRW 4x4)

LT275/70R18 all-terrain OWL tires – 4 (F-250/F-350 SRW 4x4)

## Seating

40/console/40 front bucket seats with 6-way power driver's seat and flow-through center console with lockable storage, two 12-volt powerpoints and a 110-volt power outlet (SuperCab and Crew Cab only)

## Interior

Flooring – Black all-weather floor mats (deletes carpeted floor mats)

Rapid-heat supplemental cab heater (requires diesel engine and alternator upgrade)

Rear view camera (requires XLT Interior Package, XLT Value Package or XLT Premium Package)

Remote Start System

Upfitter switches located on instrument panel (4)

Window – Rear, manual-sliding with privacy glass (Regular Cab only)

Window – Rear, power-sliding with privacy glass and defroster (SuperCab and Crew Cab only)

## Exterior

Bed mat (restrictions apply)

Bedliner – Plastic drop-in

Bedliner – Tough Bed® spray-in includes tailgate guard and black bed bolts

Body-color bodyside moldings (SRW SuperCab and Crew Cab only)

Cab steps – 6" angular black molded (standard on DRW)

Cab steps – 5" chrome tubular (SuperCab and Crew Cab only)

Cable Lock by Master Lock®<sup>2</sup>

Crew Chief™ powered by Telogis®<sup>2</sup> – Fleet tracking system (includes 1 year of Crew Chief service)

Exterior backup alarm<sup>2</sup>

Mirrors – PowerScope® power-telescoping/-folding trailer tow with power/heated glass, heated manual spotter mirrors, and integrated clearance lamps and turn signal indicators

Pickup box delete (F-250/F-350 only; requires 8' box; n/a with 20" wheels or FX4 Off-Road Package)

Reverse Sensing System (n/a with pickup box delete)

Roof clearance lamps (standard on DRW)

Skid plates – Transfer case and fuel tank (4x4 only)

Soft roll-up tonneau cover<sup>2</sup>

Splash guards

(front and rear on SRW; rear only on DRW)

Stowable bed extender (F-250/F-350 SRW only)

Tailgate step includes step, tailgate assist and grab bar

Wheel-well liners (SRW only)

## Available Packages

**XLT Interior Package** includes 6-way power driver's seat, power-adjustable pedals, autolamp/rainlamp, autolock/unlock and SecuriCode™ keyless entry keypad

**XLT Value Package** includes XLT Interior Package, 4.2" LCD productivity screen, auto-dimming rearview mirror, Reverse Sensing System and fog lamps

**XLT Premium Package** (requires PowerScope mirrors; SuperCab and Crew Cab only) includes XLT Interior Package, chrome exhaust tip, chrome tow hooks, unique chrome mirror caps, chrome cargo tie-down hooks, 6" chrome angular cab steps, 18" chrome-clad aluminum wheels with LT275/65R18 all-season BSW tires (on SRW only), 4.2" LCD productivity screen, auto-dimming rearview mirror, fog lamps, Reverse Sensing System, and steering wheel-mounted audio controls

**5th-Wheel/Gooseneck Trailer Tow Prep Package** (n/a with stowable bed extender) includes 1 under-bed-frame crossmember, 5 pickup bed 5th-wheel/gooseneck attachment points and close-out plugs, and an integrated 7-pin connector on the driver's side pickup bed wall

**9,900-lb. GVWR Package** (F-250)

**10,000-lb. GVWR Package** (F-350 SRW)

**11,400-lb. GVWR Package** (F-350 SRW 4x4 and F-350 SRW SuperCab/Crew Cab 4x2 with 8' box; requires 18" wheels and diesel engine)

**Camper Package** (restrictions apply) includes front springs upgrade (unless maximum springs have been computer-selected as included equipment), rear stabilizer bar (SRW), slide-in-camper certification and auxiliary rear springs on F-250

**CNG/LPG Gaseous Engine Prep Package** (F-250/F-350 with gas engine only) includes hardened engine intake valves and valve seats and bi-fuel manifold

**FX4 Off-Road Package** (4x4 only; n/a on F-450; other restrictions apply) includes transfer case and fuel tank skid plates, Hill Descent Control™ (SRW only), Rancho® shocks and FX4 Off-Road box decals

**Heavy-Service Front Suspension Package** (restrictions apply) includes front springs upgrade (unless maximum springs have been computer-selected as included equipment)

**High-Capacity Trailer Tow Package** (F-350 Crew Cab DRW 172" WB 4x4 only; requires diesel engine and 4.30 limited-slip rear axle) includes max. front springs, wide track front axle, front fender flare moldings, and increased GCWR from 31,900 lbs. to 35,000 lbs.

**Snow Plow Prep Package** (4x4 only; restrictions apply) includes computer-selected springs for snow plow application and extra-heavy-duty alternator with diesel engine only



17" Argent-Painted Steel  
Standard: F-350 DRW



17" Argent-Painted Steel  
w/Stainless Steel Cover  
Optional: F-350 DRW



17" Polished Forged-Aluminum  
Optional: F-350 DRW



17" 6-Spoke Cast-Aluminum  
Optional: F-250/F-350 SRW



18" Chrome-Clad Aluminum  
Included: F-250/F-350 SRW  
w/Premium Package



18" Cast-Aluminum  
Standard: F-250/F-350 SRW



19.5" Polished Forged-Aluminum  
Standard: F-450 DRW

<sup>1</sup>Requires 5th-Wheel/Gooseneck Trailer Tow Prep Package. See your dealer for details. <sup>2</sup>Ford Licensed Accessory. See your dealer for limited warranty details.



# LARIAT



F-450 LARIAT Crew Cab 4x4. White Platinum/Caribou two-tone. Chrome Package. Available equipment.



LARIAT Crew Cab. Charcoal Black leather trim. Available equipment.

Includes all XLT features, plus:

## Mechanical

Alternator – 200-amp extra-heavy-duty  
Electronic shift-on-the-fly (ESOF) 4-Wheel-Drive System with auto/manual locking hubs (4x4 models only)  
17" polished forged-aluminum wheels (F-350 DRW)  
18" bright-machined cast-aluminum wheels (SRW)  
LT275/65R18 all-season BSW tires – 5 (SRW)

## Seating

40/console/40 front bucket seats and flow-through center console with lockable storage, two 12-volt powerpoints and a 110-volt power outlet  
10-way power driver and front-passenger seats  
Leather-trimmed seats

## Interior

Premium Sound System includes AM/FM stereo/single-CD player with MP3 capability, digital clock and 8 speakers with subwoofer (SuperCab only)  
Premium Audio System from Sony® includes AM/FM stereo/single-CD player with MP3 capability, digital clock, and 8 speakers with subwoofer (Crew Cab only)  
SYNC® with MyFord Touch® includes an 8" color LCD touch screen in center stack; dash-top closable storage with media hub (2 USB ports, SD card reader, audio/video input jacks, and 12-volt powerpoint); and SYNC Services¹  
SiriusXM Satellite Radio with 6-month trial subscription  
Dual-zone electronic automatic temperature control

Message center – Driver-configurable enhanced information center with LCD productivity screen includes gauge setup, compass, trip computer, fuel economy and towing/off-road applications, SelectShift® controls, Ice Blue® Lighting, halo lighting and daytime illumination  
Mirror – Auto-dimming rearview  
Power-adjustable pedals  
Power outlet – 110-volt on instrument panel  
Rear view camera  
Steering wheel – Color-coordinated leather-wrapped with secondary audio, cruise and 5-button message center controls  
Visors with illuminated driver and passenger mirrors  
Window – Rear, power-sliding with privacy glass and defroster  
Woodgrain-style instrument panel accents

## Exterior

Autolamp automatic on/off headlamps with rainlamp feature  
Cab steps – 5" chrome tubular (DRW)  
Door handles – Body-color  
Fog lamps  
Mirrors – PowerScope® power-telescoping/folding trailer tow with power/heated glass, heated manual spotter mirrors, and integrated clearance lamps and turn signal indicators  
Reverse Sensing System  
SecuriCode™ keyless entry keypad

## Available Options

### Mechanical

6.7L Power Stroke® V8 Turbo Diesel B20-capable engine (standard on F-450)  
5th-wheel hitch kit (requires 8' box; includes 18K hitch on SRW or 26.5K hitch on DRW)²  
Gooseneck hitch kit³  
Alternators – Dual, 357-amp total (diesel engine only)  
Engine block heater (standard in 15 cold-weather states)  
Power take-off (PTO) provision allows transmission-mounted live-drive and stationary modes (diesel engine only)  
Rear axle – Electronic-locking (F-250/F-350 SRW only)  
Rear axle – Limited-slip (F-350 DRW; standard on F-450)  
20" premium cast-aluminum wheels – 4 (F-250/F-350 SRW 4x4 only)  
20" chrome-clad aluminum wheels – 4 (requires Chrome Package; F-250/F-350 SRW 4x4 only)  
LT245/75R17 all-terrain BSW tires – 5 (F-350 DRW)  
LT245/75R17 all-terrain OWL tires – 4 (F-350 DRW)  
LT275/70R18 all-terrain BSW tires – 4 (F-250/F-350 SRW 4x4)  
LT275/70R18 all-terrain OWL tires – 4 (F-250/F-350 SRW 4x4)  
LT275/65R20 all-terrain BSW – 4 (F-250 4x4 only; requires FX4 Off-Road Package)  
LT275/65R20 all-terrain OWL tires – 4 (F-250/F-350 SRW 4x4)

## Seating

40/20/40 split leather-trimmed front seats, center under-seat lockable storage with 12-volt powerpoint, and center armrest with cupholders and storage  
Heated rear outboard seats (requires LARIAT Interior Package or LARIAT Ultimate Package; Crew Cab only)

## Interior

Navigation System with Premium Sound System includes HD Radio™ Technology, AM/FM stereo/single-CD player with MP3 capability, USB port, in-dash touch screen, voice-activated controls, SiriusXM Traffic and Travel Link capability, digital clock and 8 speakers with subwoofer  
Flooring – Black all-weather floor mats (deletes carpeted floor mats)  
Rapid-heat supplemental cab heater (requires diesel engine)  
Remote Start System  
Universal garage door opener  
Upfitter switches located on instrument panel (4)

## Exterior

Bed mat (restrictions apply)  
Bedliner – Plastic drop-in  
Bedliner – Tough Bed® spray-in includes tailgate guard and black bed bolts  
Body-color bodyside moldings (SRW only)  
Cab steps – 5" chrome tubular (standard on DRW)  
Cable Lock by Master Lock®³  
Crew Chief™ powered by Telogis®³ – Fleet tracking system (includes 1 year of Crew Chief service)  
Exterior backup alarm³  
Power-sliding moonroof (Crew Cab only)  
Roof clearance lamps (standard on DRW)  
Skid plates – Transfer case and fuel tank (4x4 only)  
Soft roll-up tonneau cover³  
Splash guards (front and rear on SRW; rear only on DRW)  
Stowable bed extender (F-250/F-350 SRW only)  
Tailgate step includes step, tailgate assist and grab bar  
Two-tone lower-accent paint (includes accent-color wheel-lip moldings on SRW)  
Wheel-well liners (SRW only)

## Available Packages

**LARIAT Interior Package** includes easy entry/exit memory, power, heated/cooled driver's seat; power, heated/cooled front-passenger seat; memory, power trailer tow mirrors; memory, power-adjustable pedals; and Remote Start System

**LARIAT Ultimate Package** (Crew Cab only; restrictions apply) includes easy entry/exit memory, power, heated/cooled driver's seat; power, heated/cooled front-passenger seat; memory, power trailer tow mirrors; memory, power-adjustable pedals; power moonroof; Navigation System; tailgate step; and Remote Start System

**5th-Wheel/Gooseneck Trailer Tow Prep Package** (n/a with stowable bed extender) includes 1 under-bed-frame crossmember, 5 pickup bed 5th-wheel/gooseneck attachment points and close-out plugs, and an integrated 7-pin connector on the driver's side pickup bed wall

**9,900-lb. GVWR Package** (F-250)

**10,000-lb. GVWR Package** (F-350 SRW)

**11,400-lb. GVWR Package** (F-350 SRW 4x4 and F-350 SRW SuperCab/Crew Cab 4x2 with 8' box; requires 18" wheels and diesel engine)

**Camper Package** (restrictions apply) includes front springs upgrade (unless maximum springs have been computer-selected as included equipment), rear stabilizer bar (SRW), slide-in-camper certification and auxiliary rear springs on F-250

**Chrome Package** includes chrome exhaust tip, chrome tow hooks, unique chrome mirror caps, chrome cargo tie-down hooks, 6" chrome angular cab steps and 18" chrome-clad aluminum wheels with LT275/65R18 all-season BSW tires (on SRW only)

**CNG/LPG Gaseous Engine Prep Package** (F-250/F-350 with gas engine only) includes hardened engine intake valves and valve seats and bi-fuel manifold

**FX4 Off-Road Package** (4x4 only; n/a on F-450; other restrictions apply) includes transfer case and fuel tank skid plates, Hill Descent Control™ (SRW only), Rancho® shocks and FX4 Off-Road box decals

**Heavy-Service Front Suspension Package** (restrictions apply) includes front springs upgrade (unless maximum springs have been computer-selected as included equipment)

**High-Capacity Trailer Tow Package** (F-350 Crew Cab DRW 172" WB 4x4 only; requires diesel engine and 4.30 limited-slip rear axle) includes max. front springs, wide track front axle, front fender flare moldings, and increased GCWR from 31,900 lbs. to 35,000 lbs.

**Snow Plow Prep Package** (4x4 only; restrictions apply) includes computer-selected springs for snow plow application and extra-heavy-duty alternator with diesel engine only

¹SYNC Services varies by trim level and model year and may require a subscription. Traffic alerts and turn-by-turn directions available in select markets. Message and data rates may apply. Ford Motor Company reserves the right to change or discontinue this product service at any time without prior notification or incurring any future obligation. ²Requires 5th-Wheel/Gooseneck Trailer Tow Prep Package. See your dealer for details. ³Ford Licensed Accessory. See your dealer for limited warranty details.



17" Polished Forged-Aluminum  
Standard: F-350 DRW



18" Bright-Machined Cast-Aluminum  
Standard: F-250/F-350 SRW



18" Chrome-Clad Aluminum  
Included: F-250/F-350 SRW w/Chrome Package



19.5" Polished Forged-Aluminum  
Standard: F-450 DRW



20" Premium Cast-Aluminum  
Optional: F-250/F-350 SRW 4x4



20" Chrome-Clad Aluminum  
Optional: F-250/F-350 SRW 4x4 w/Chrome Package





F-450 KING RANCH Crew Cab 4x4. Green Gem/Caribou two-tone. Chrome Package. Available equipment.  
KING RANCH Crew Cab 4x4. Antiqued Mesa Brown leather trim. Black interior. Available equipment.

Includes all LARIAT features, plus:

**Seating**

- Antiqued Mesa Brown leather-trimmed seats with "KING RANCH" seat back logo
- Easy entry/exit driver's seat memory feature
- Heated/cooled driver and front-passenger seats

**Interior**

- Navigation System with HD Radio™ Technology
- Flooring – Color-coordinated carpeted floor mats with King Ranch logo
- Memory Group includes memory feature for power trailer tow mirrors, 10-way power driver's seat, and power-adjustable pedals
- Remote Start System
- Steering wheel – Antiqued Mesa Brown leather-wrapped with secondary audio, cruise and 5-button message center controls
- Unique woodgrain-style instrument panel accents
- Universal garage door opener

**Exterior**

- Accent-color wheel-lip moldings (SRW)
- Body-color bodyside moldings (SRW)
- Bumpers – Accent-color monochromatic
- Cab steps – Illuminated accent-color platform
- Grille – Body-color surround with chrome insert
- Mirrors – PowerScope® power-telescoping/-folding trailer tow with memory, power/heated glass, heated manual spotter mirrors, integrated clearance lamps and turn signal indicators with body-color mirror caps
- Two-tone lower-accent paint

**Available Options**

**Mechanical**

- 6.7L Power Stroke® V8 Turbo Diesel B20-capable engine (standard on F-450)
- 5th-wheel hitch kit (requires 8' box; includes 18K hitch on SRW or 26.5K hitch on DRW)<sup>1</sup>
- Gooseneck hitch kit<sup>1</sup>
- Alternators – Dual, 357-amp total (diesel engine only)
- Engine block heater (standard in 15 cold-weather states)

Power take-off (PTO) provision allows transmission-mounted live-drive and stationary modes (diesel engine only)

- Rear axle – Electronic-locking (F-250/F-350 SRW only)
- Rear axle – Limited-slip (F-350 DRW; standard on F-450)
- 20" chrome-clad aluminum wheels – 4 (requires Chrome Package; F-250/F-350 SRW 4x4 only)
- LT275/70R18 all-terrain BSW tires – 4 (F-250/F-350 SRW 4x4)
- LT275/70R18 all-terrain OWL tires – 4 (F-250/F-350 SRW 4x4)
- LT275/65R20 all-terrain OWL tires – 4 (F-250/F-350 SRW 4x4)
- LT245/75R17 all-terrain BSW tires – 5 (F-350 DRW)
- LT245/75R17 all-terrain OWL tires – 4 (F-350 DRW)

**Seating**

Heated rear outboard seats

**Interior**

- Rapid-heat supplemental cab heater (requires diesel engine)
- Upfitter switches located on instrument panel (4)

**Exterior**

- Bed mat (restrictions apply)
- Bedliner – Plastic drop-in
- Bedliner – Tough Bed® spray-in includes tailgate guard and black bed bolts
- Cable Lock by Master Lock®<sup>2</sup>
- Crew Chief™ powered by Telogis®<sup>2</sup> – Fleet tracking system (includes 1 year of Crew Chief service)
- Exterior backup alarm<sup>2</sup>
- Power-sliding moonroof
- Roof clearance lamps (standard on DRW)
- Skid plates – Transfer case and fuel tank (4x4 only)
- Soft roll-up tonneau cover<sup>2</sup>
- Splash guards (front and rear on SRW; rear only on DRW)
- Stowable bed extender (F-250/F-350 SRW only)
- Tailgate step includes step, tailgate assist and grab bar
- Wheel-well liners (SRW only)

**Available Packages**

**KING RANCH with Chrome Package** includes chrome exhaust tip, chrome tow hooks, unique chrome mirror caps, chrome cargo tie-down hooks, 6" chrome angular cab steps, and 18" chrome-clad aluminum wheels with LT275/65R18 all-season BSW tires (on SRW only)

**KING RANCH Monochromatic Paint Package** (requires KING RANCH with Chrome Package) includes chrome front and rear bumpers, monochromatic paint, body-color bumper extenders (F-450), body-color front fender flares (DRW), and unique KING RANCH 6.7L Power Stroke diesel engine decal (replaces tape stripe)

**5th-Wheel/Gooseneck Trailer Tow Prep Package** (n/a with stowable bed extender) includes 1 under-bed-frame crossmember, 5 pickup bed 5th-wheel/gooseneck attachment points and close-out plugs, and an integrated 7-pin connector on the driver's side pickup bed wall

**9,900-lb. GVWR Package** (F-250)

**10,000-lb. GVWR Package** (F-350 SRW)

**11,400-lb. GVWR Package** (F-350 SRW 4x4 and F-350 SRW SuperCab/Crew Cab 4x2 with 8' box; requires 18" wheels and diesel engine)

**Camper Package** (restrictions apply) includes front springs upgrade (unless maximum springs have been computer-selected as included equipment), rear stabilizer bar (SRW), slide-in-camper certification and auxiliary rear springs on F-250

**CNG/LPG Gaseous Engine Prep Package** (F-250/F-350 with gas engine only) includes hardened engine intake valves and valve seats and bi-fuel manifold

**FX4 Off-Road Package** (4x4 only; n/a on F-450; other restrictions apply) includes transfer case and fuel tank skid plates, Hill Descent Control™ (SRW only), Rancho® shocks and FX4 Off-Road box decals

**Heavy-Service Front Suspension Package** (restrictions apply) includes front springs upgrade (unless maximum springs have been computer-selected as included equipment)

**High-Capacity Trailer Tow Package** (F-350 Crew Cab DRW 172" WB 4x4 only; requires diesel engine and 4.30 limited-slip rear axle) includes max. front springs, wide track front axle, front fender flare moldings, and increased GCWR from 31,900 lbs. to 35,000 lbs.

**Snow Plow Prep Package** (4x4 only; restrictions apply) includes computer-selected springs for snow plow application and extra-heavy-duty alternator with diesel engine only

<sup>1</sup>Late availability. <sup>2</sup>Requires 5th-Wheel/Gooseneck Trailer Tow Prep Package. See your dealer for details. <sup>3</sup>Ford Licensed Accessory. See your dealer for limited warranty details.



17" Polished Forged-Aluminum  
Standard: F-350 DRW



18" Bright-Machined  
Cast-Aluminum  
Standard: F-250/F-350 SRW



18" Chrome-Clad Aluminum  
Included: F-250/F-350 SRW  
w/Chrome Package



19.5" Polished Forged-Aluminum  
Standard: F-450 DRW



20" Premium Painted  
Cast-Aluminum  
Optional: F-250/F-350 SRW 4x4



20" Chrome-Clad Aluminum  
Optional: F-250/F-350 SRW 4x4  
w/Chrome Package



# PLATINUM



F-350 PLATINUM Crew Cab 4x4. Ruby Red. Available equipment.

PLATINUM Crew Cab. Pecan leather trim. Available equipment.

Includes all LARIAT features, plus:

## Mechanical

20" 7-spoke cast-aluminum wheels with black-painted pockets (SRW)

LT275/65R20 all-terrain OWL tires (SRW)

## Seating

Premium leather-trimmed seats with tuxedo stripe design and "PLATINUM" seat back embroidery

Easy entry/exit driver's seat memory feature

Heated/cooled driver and front-passenger seats

## Interior

Navigation System with HD Radio™ Technology

Memory Group includes memory feature for power trailer tow mirrors, 10-way power driver's seat, and adjustable pedals

Remote Start System

Steering wheel – Heated, premium leather-wrapped with genuine walnut swirl wood accent, and secondary audio, cruise and 5-button message center controls

Unique woodgrain-style instrument panel accents

Universal garage door opener

## Exterior

Bumpers – Body-color

Cab steps – 6" chrome angular

Cargo box – Chrome cargo tie-down hooks

Chrome exhaust tip

Door handles – Chrome with body-color bezels

Grille – Satin-chrome surround with bright chrome insert

Mirrors – PowerScope® power-telescoping/-folding trailer tow with memory, power/heated glass, heated manual spotter mirrors, integrated clearance lamps and turn signal indicators, and chrome mirror caps

Raised chrome "PLATINUM" box-side lettering

Satin-chrome tailgate appliqué

Tailgate step includes step, tailgate assist and grab bar

Tow hooks – Chrome, 2 in front

## Available Options

### Mechanical

6.7L Power Stroke® V8 Turbo Diesel B20-capable engine (standard on F-450)

5th-wheel hitch kit (requires 8' box; includes 18K hitch on SRW or 26.5K hitch on DRW)<sup>1</sup>

Gooseneck hitch kit<sup>1</sup>

Alternators – Dual, 357-amp total (diesel engine only)

Engine block heater (standard in 15 cold-weather states)

Power take-off (PTO) provision allows transmission-mounted live-drive and stationary modes (diesel engine only)

Rear axle – Electronic-locking (F-250/F-350 SRW only)

Rear axle – Limited-slip (F-350 DRW; standard on F-450)

LT245/75R17 all-terrain BSW tires – 5 (F-350 DRW)

LT245/75R17 all-terrain OWL tires – 4 (F-350 DRW)

### Seating

Heated rear outboard seats

### Interior

Rapid-heat supplemental cab heater (requires diesel engine)

Upfitter switches located on instrument panel (4)

### Exterior

Bed mat (restrictions apply)

Bedliner – Plastic drop-in

Bedliner – Tough Bed® spray-in includes tailgate guard and black bed bolts

Body-color bodyside moldings (SRW)

Cable Lock by Master Lock®<sup>2</sup>

Crew Chief™ powered by Telogis®<sup>2</sup> – Fleet tracking system (includes 1 year of Crew Chief service)

Exterior backup alarm<sup>2</sup>

Power-sliding moonroof

Roof clearance lamps (standard on DRW)

Skid plates – Transfer case and fuel tank

Soft roll-up tonneau cover<sup>2</sup>

Splash guards (front and rear on SRW; rear only on DRW)

Stowable bed extender (F-250/F-350 SRW only)

Wheel-well liners (SRW only)

## Available Packages

**5th-Wheel/Gooseneck Trailer Tow Prep Package** (n/a with stowable bed extender) includes 1 under-bed-frame crossmember, 5 pickup bed 5th-wheel/gooseneck attachment points and close-out plugs, and an integrated 7-pin connector on the driver's side pickup bed wall

**9,900-lb. GVWR Package** (F-250)

**10,000-lb. GVWR Package** (F-350 SRW)

**11,400-lb. GVWR Package**

(F-350 SRW with diesel engine)  
**Camper Package** (DRW only; restrictions apply) includes front springs upgrade (unless maximum springs have been computer-selected as included equipment) and slide-in-camper certification

**CNG/LPG Gaseous Engine Prep Package** (F-250/F-350 with gas engine only) includes hardened engine intake valves and valve seats and bi-fuel manifold

**FX4 Off-Road Package** (4x4 only; n/a on F-450; other restrictions apply) includes transfer case and fuel tank skid plates, Hill Descent Control™ (SRW only), Rancho® shocks and FX4 Off-Road box decals

**Heavy-Service Front Suspension Package** (restrictions apply) includes front springs upgrade (unless maximum springs have been computer-selected as included equipment)

**High-Capacity Trailer Tow Package** (F-350 Crew Cab DRW 172" WB 4x4 only; requires diesel engine and 4.30 limited-slip rear axle) includes max. front springs, wide track front axle, front fender flare moldings, and increased GCWR from 31,900 lbs. to 35,000 lbs.

**Snow Plow Prep Package** (4x4 only; restrictions apply) includes computer-selected springs for snow plow application and extra-heavy-duty alternator with diesel engine only

<sup>1</sup>Requires 5th-Wheel/Gooseneck Trailer Tow Prep Package. See your dealer for details. <sup>2</sup>Ford Licensed Accessory. See your dealer for limited warranty details.



17" Polished Forged-Aluminum  
Optional: F-350 DRW



19.5" Polished Forged-Aluminum  
Standard: F-450 DRW



20" 7-Spoke Cast-Aluminum  
w/Black-Painted Pockets  
Standard: F-250/F-350 SRW



## EXTERIORS



White Platinum Metallic Tri-coat



Ingot Silver



Ruby Red Metallic Tinted Clearcoat



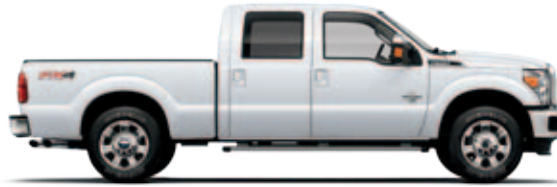
Blue Jeans



Magnetic



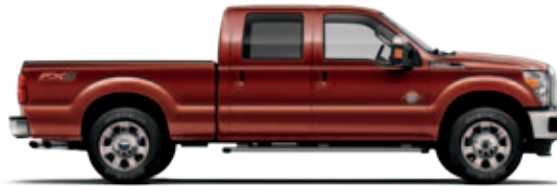
Tuxedo Black



Oxford White



Vermillion Red



Bronze Fire



Caribou



Green Gem

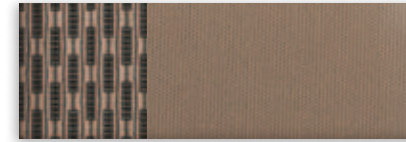
## INTERIORS



1 Steel HD Vinyl



2 Steel Cloth



3 Adobe Cloth



4 Adobe Leather



5 Charcoal Black Leather



6 Antiqued Mesa Brown Leather



7 Pecan Premium Leather



8 Charcoal Black Premium Leather

### Exteriors

### Two-Tone

XL

XLT

### Interiors

LARIAT

KINGRANCH<sup>01</sup>

PLATINUM

White Platinum Metallic Tri-coat <sup>2</sup>	■								
Oxford White	■ ■	1 2	2 3	4 5	6			7 8	
Ingot Silver	■	1 2	2	5				8	
Vermillion Red		1 2	2 3	4 5					
Ruby Red Metallic Tinted Clearcoat <sup>2</sup>	■		3	4 5	6			8	
Bronze Fire <sup>3,4</sup>	■		3	4 5	6			7 8	
Blue Jeans	■ ■	1 2	2 3	4 5	6				
Caribou <sup>3,4</sup>		1 2	2 3	4 5					
Magnetic <sup>3</sup>		1 2	2	5					
Green Gem	■ ■	1 2	2 3	4 5	6				
Tuxedo Black	■ ■	1 2	2 3	4 5	6			7 8	

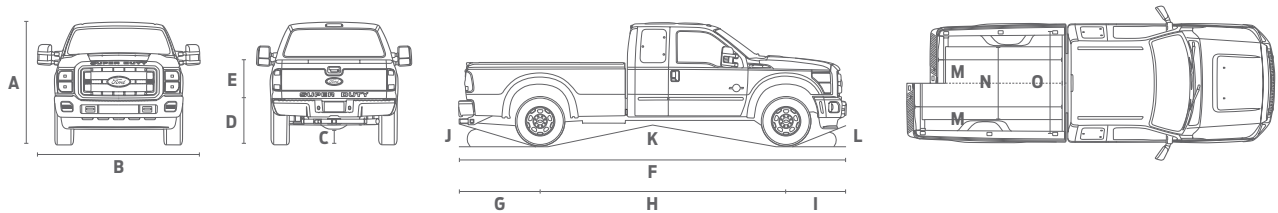
■ Caribou Two-Tone Accent exterior standard on KING RANCH, optional on LARIAT

■ Magnetic Two-Tone Accent exterior optional on LARIAT with Charcoal Black Leather interior only

<sup>1</sup>KING RANCH available in Black or Adobe interior environment. <sup>2</sup>Additional charge. <sup>3</sup>New for 2015. <sup>4</sup>Late availability. Colors are representative only. See your dealer for actual paint/trim options.



# TECHNICAL SPECIFICATIONS

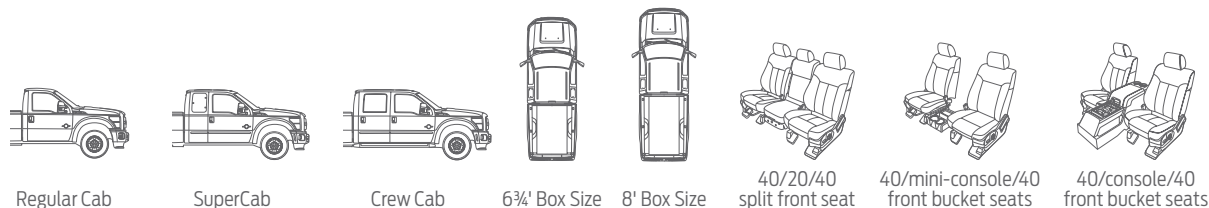


## DIMENSIONS

Exterior	Regular Cab		SuperCab		Crew Cab	
	LWB	SWB	LWB	SWB	LWB	SWB
A. Height – F-250 SRW (w/o options)	76.6"/79.2"	77.0"/79.5"	76.9"/79.3"	77.4"/79.7"	77.3"/79.8"	
A. Height – F-350 SRW (w/o options)	76.5"/80.0"	76.9"/80.4"	76.7"/80.2"	77.2"/80.8"	77.2"/80.8"	
A. Height – F-350 DRW (w/o options)	76.7"/79.5"	—	76.9"/79.7"	—	77.3"/79.9"	
A. Height – F-450 DRW (w/o options)	—	—	—	—	79.7"	
B. Width – SRW (excl. mirrors)	79.9"	79.9"	79.9"	79.9"	79.9"	
B. Width – DRW (excl. mirrors)	96.0"	—	96.0"	—	96.0"	
B. Width – With mirrors	104.9"	104.9"	104.9"	104.9"	104.9"	
B. Width – With mirrors extended	110.0"	110.0"	110.0"	110.0"	110.0"	
C. Ground clearance – F-250 SRW	8.5"/8.2"	8.5"/8.2"	8.5"/8.1"	8.5"/8.1"	8.5"/8.1"	
C. Ground clearance – F-350 SRW	8.5"/8.2"	8.5"/8.2"	8.5"/8.2"	8.5"/8.2"	8.5"/8.2"	
C. Ground clearance – F-350 DRW	8.1"/8.0"	—	8.1"/8.0"	—	8.0"/8.0"	
C. Ground clearance – F-450 DRW	—	—	—	—	8.0"	
D. Load floor height – F-250 SRW	35.2"/36.3"	34.8"/35.6"	34.4"/35.4"	34.2"/35.1"	34.1"/35.0"	
D. Load floor height – F-350 SRW	34.7"/38.5"	34.4"/37.9"	34.1"/38.0"	33.9"/37.8"	33.8"/37.7"	
D. Load floor height – F-350 DRW	35.0"/36.4"	—	34.3"/35.7"	—	34.1"/35.6"	
D. Load floor height – F-450 DRW	—	—	—	—	35.4"	
E. Cargo box height	20.0"	20.0"	20.0"	20.0"	20.0"	
F. Length	227.6"	232.4"	248.6"	246.8"	263.0"	
G. Overhang – Rear	52.4"	52.4"	52.4"	52.4"	52.4"	
H. Wheelbase	137.0"	141.8"	158.0"	156.2"	172.4"	
I. Overhang – Front	38.1"	38.1"	38.1"	38.1"	38.1"	
J. Angle of departure – F-250 SRW	17.8°/19.2°	17.4°/18.5°	17.0°/18.3°	16.7°/18.0°	16.7°/17.9°	
J. Angle of departure – F-350 SRW	17.3°/21.5°	17.0°/20.9°	16.6°/21.1°	16.4°/20.8°	16.3°/20.8°	
J. Angle of departure – F-350 DRW	17.6°/19.3°	—	16.9°/18.7°	—	16.7°/18.5°	
J. Angle of departure – F-450 DRW	—	—	—	—	18.3°	

Exterior	Regular Cab		SuperCab		Crew Cab	
	LWB	SWB	LWB	SWB	LWB	SWB
K. Ramp breakover angle – F-250 SRW	17.5°/20.4°	16.9°/19.8°	15.8°/18.1°	15.7°/18.1°	15.0°/17.3°	
K. Ramp breakover angle – F-350 SRW	17.2°/21.5°	16.7°/20.9°	15.6°/19.2°	15.5°/19.2°	14.8°/18.2°	
K. Ramp breakover angle – F-350 DRW	17.5°/20.4°	—	15.9°/18.6°	—	15.0°/17.4°	
K. Ramp breakover angle – F-450 DRW	—	—	—	—	17.0°	
L. Angle of approach – F-250 SRW	18.0°/19.4°	18.1°/20.1°	18.7°/20.0°	18.7°/20.0°	18.9°/20.6°	
L. Angle of approach – F-350 SRW	18.1°/18.8°	18.2°/19.5°	18.8°/19.3°	18.8°/19.3°	19.0°/20.0°	
L. Angle of approach – F-350 DRW	18.2°/19.2°	—	19.0°/20.6°	—	19.1°/20.3°	
L. Angle of approach – F-450 DRW	—	—	—	—	19.8°	
<b>Interior</b>						
Front head room	40.7"	40.7"	40.7"	40.7"	40.7"	
Front shoulder room	68.0"	68.0"	68.0"	68.0"	68.0"	
Front hip room	67.6"	67.6"	67.6"	67.6"	67.6"	
Front leg room	41.1"	41.1"	41.1"	41.1"	41.1"	
Rear head room	—	38.1"	38.1"	40.8"	40.8"	
Rear shoulder room	—	68.1"	68.1"	68.0"	68.0"	
Rear hip room	—	67.3"	67.3"	67.6"	67.6"	
Rear leg room	—	31.6"	31.6"	42.1"	42.1"	
<b>Cargo Box</b>						
Volume (cu. ft.)	77.3	64.1	77.3	64.1	77.3	
M. Length at floor	98.0"	81.8"	98.0"	81.8"	98.0"	
N. Width at wheelhouse	50.9"	50.9"	50.9"	50.9"	50.9"	
O. Width at floor (maximum)	69.3"	69.3"	69.3"	69.3"	69.3"	

SRW = single rear wheel DRW = dual rear wheel  
SWB = short wheelbase (6¾' cargo box) LWB = long wheelbase (8' cargo box)



	Regular Cab	SuperCab	Crew Cab	6¾' Box Size	8' Box Size	40/20/40 split front seat	40/mini-console/40 front bucket seats	40/console/40 front bucket seats
XL	<input type="checkbox"/>	<input type="checkbox"/>	<input type="checkbox"/>	<input type="checkbox"/>	<input type="checkbox"/>	<input checked="" type="checkbox"/>	<input type="checkbox"/>	<input type="checkbox"/>
XLT	<input type="checkbox"/>	<input type="checkbox"/>	<input type="checkbox"/>	<input type="checkbox"/>	<input type="checkbox"/>	<input checked="" type="checkbox"/>	<input type="checkbox"/>	<input type="checkbox"/>
LARIAT	<input type="checkbox"/>	<input type="checkbox"/>	<input type="checkbox"/>	<input type="checkbox"/>	<input type="checkbox"/>	<input type="checkbox"/>	<input type="checkbox"/>	<input checked="" type="checkbox"/>
KING RANCH	<input type="checkbox"/>	<input type="checkbox"/>	<input checked="" type="checkbox"/>	<input type="checkbox"/>	<input type="checkbox"/>	<input type="checkbox"/>	<input type="checkbox"/>	<input checked="" type="checkbox"/>
PLATINUM	<input type="checkbox"/>	<input checked="" type="checkbox"/>	<input type="checkbox"/>	<input type="checkbox"/>	<input type="checkbox"/>	<input type="checkbox"/>	<input type="checkbox"/>	<input checked="" type="checkbox"/>

■ Standard □ Optional

## INTERIOR STORAGE (cu. ft.)

Front 40/20/40 split seat center under-seat lockable storage – 0.36  
Front flow-through center console main bin – 1.23  
Rear Crew Cab 60/40 split bench under-seat lockable storage – 1.17

2015 **SUPER DUTY**  
ford.com





# TECHNICAL SPECIFICATIONS

## MAXIMUM PAYLOAD WEIGHT RATINGS (lbs.)

	Max. GVWR	Regular Cab		Crew Cab		
		137.0" WB	141.8" WB	156.2" WB	172.4" WB	
<b>F-250 SRW 4x2</b>	9,900	4,130	3,760	3,660	3,540	
	10,000	4,240	3,860	3,760	3,640	
<b>F-250 SRW 4x4</b>	9,900	3,630	3,350	3,250	3,150	
	10,000	3,780	3,450	3,350	3,250	
<b>F-350 SRW 4x2</b>	10,000	4,080	3,790	3,720	3,600	
	10,200	—	—	3,920	3,800	
	10,500	4,540	4,250	—	—	
	10,700	—	3,810	—	4,260	
	10,800	—	—	3,770	3,730	
	10,900	—	—	4,580	—	
	11,000	4,380	4,060	—	—	
	11,100	—	—	—	—	
	11,400	—	—	4,330	4,290	
	11,500	—	—	4,430	—	
	<b>F-350 SRW 4x4</b>	10,000	3,660	3,400	3,310	3,210
		10,400	4,060	—	—	—
		10,500	4,110	3,900	—	—
		10,600	—	3,950	—	3,810
10,700		—	—	4,010	—	
10,800		3,800	—	4,070	3,970	
11,000		3,960	—	4,240	—	
11,100		4,680 <sup>4</sup>	4,420	—	—	
11,200		—	3,900	3,770	3,750	
11,300		4,930	—	3,820	4,440	
11,400		4,330	4,080	3,900	3,870	
11,500		4,430	4,170	3,990	3,970	
<b>F-350 DRW 4x2</b>		13,500	7,260	—	—	—
		13,900	—	—	7,210	—
	14,000	7,060	—	6,550	—	
<b>F-350 DRW 4x4</b>	13,800	7,090	—	—	—	
	14,000	6,630	—	6,890	—	
<b>F-450<sup>1</sup> DRW 4x4</b>	14,000	—	—	—	5,450	

WB = wheelbase

## CONVENTIONAL TOWING — MAXIMUM LOADED TRAILER WEIGHT RATINGS (lbs.)

Automatic Transmission			Regular Cab						SuperCab						Crew Cab						
Engine	Axle Ratio	GCWR	F-250 SRW 4x2	F-350 SRW 4x2	F-350 DRW 4x2	F-250 SRW 4x4	F-350 SRW 4x4	F-350 DRW 4x4	F-250 SRW 4x2	F-350 SRW 4x2	F-350 DRW 4x2	F-250 SRW 4x4	F-350 SRW 4x4	F-350 DRW 4x4	F-250 SRW 4x2	F-350 SRW 4x2	F-350 DRW 4x2	F-250 SRW 4x4	F-350 SRW 4x4	F-350 DRW 4x4	F-450 <sup>1</sup> DRW 4x4
			6.2L 2-valve FFV	3.73	19,000	12,500	12,500	—	12,500	12,500	—	12,500	12,500	—	12,400	12,300	—	12,500	12,500	—	12,200
	4.30	19,500	—	—	13,100	—	—	12,700	—	—	12,700	—	—	12,300	—	—	12,500	—	—	12,100	—
		22,000	12,500	12,500	—	12,500	12,500	—	12,500	12,500	—	12,500	12,500	—	12,500	12,500	—	12,500	12,500	—	—
		22,500	—	—	16,100	—	—	15,700	—	—	15,700	—	—	15,300	—	—	15,500	—	—	15,100	—
6.7L V8 Turbo Diesel	3.31	23,500	12,500	12,500	—	12,500	12,500	—	14,000	14,000	—	14,000	14,000	—	14,000	14,000	—	14,000	14,000	—	—
	3.55	23,500	12,500	12,500	—	12,500	12,500	—	14,000	14,000	—	14,000	14,000	—	14,000	14,000	—	14,000	14,000	—	—
	3.73	31,900	—	—	19,000	—	—	19,000	—	—	19,000	—	—	19,000	—	—	19,000	—	—	19,000	—
	4.30	35,000 <sup>2</sup>	—	—	—	—	—	—	—	—	—	—	—	—	—	—	—	—	—	19,000	—

## GOOSENECK/5TH-WHEEL TOWING — MAXIMUM LOADED TRAILER WEIGHT RATINGS (lbs.)

Automatic Transmission			Regular Cab						SuperCab						Crew Cab						
Engine	Axle Ratio	GCWR	F-250 SRW 4x2	F-350 SRW 4x2	F-350 DRW 4x2	F-250 SRW 4x4	F-350 SRW 4x4	F-350 DRW 4x4	F-250 SRW 4x2	F-350 SRW 4x2	F-350 DRW 4x2	F-250 SRW 4x4	F-350 SRW 4x4	F-350 DRW 4x4	F-250 SRW 4x2	F-350 SRW 4x2	F-350 DRW 4x2	F-250 SRW 4x4	F-350 SRW 4x4	F-350 DRW 4x4	F-450 <sup>1</sup> DRW 4x4
			6.2L 2-valve FFV	3.73	19,000	12,900	12,900	—	12,500	12,500	—	12,700	12,600	—	12,300	12,200	—	12,400	12,400	—	12,100
	4.30	19,500	—	—	13,000	—	—	12,600	—	—	12,600	—	—	12,200	—	—	12,400	—	—	12,000	—
		22,000	15,900	15,900	—	15,500	15,500	—	15,700	15,600	—	15,300	15,200	—	15,400	15,400	—	15,100	15,000	—	—
		22,500	—	—	16,000	—	—	15,600	—	—	15,600	—	—	15,200	—	—	15,400	—	—	15,000	—
6.7L V8 Turbo Diesel	3.31	23,500	16,800	16,700	—	16,400	16,300	—	16,500	16,400	—	16,100	16,100	—	16,300	16,200	—	15,900	15,900	—	—
	3.55	23,500	16,800	16,700	—	16,400	16,300	—	16,500	16,400	—	16,100	16,100	—	16,300	16,200	—	15,900	15,900	—	—
	3.73	31,900	—	—	24,700	—	—	24,300	—	—	24,200	—	—	23,800	—	—	24,000	—	—	23,500	—
	4.30	35,000 <sup>2</sup>	—	—	—	—	—	—	—	—	—	—	—	—	—	—	—	—	—	26,700 <sup>3</sup>	—

<sup>1</sup>Available Summer 2014. <sup>2</sup>Requires High-Capacity Trailer Tow Package. <sup>3</sup>5th-wheel towing limited to 5th-wheel hitch rating of 26,500 lbs. <sup>4</sup>Requires Camper Package.

Maximum capabilities shown are for properly equipped vehicles with required equipment and a 150-lb. driver. Weight of additional options, equipment, passengers and cargo must be deducted from this weight. For additional information, see your Ford Dealer. **Conventional Towing Notes:** This information also applies to models with Pickup Box Delete option (66D). Trailer tongue load weight should be 10-15% of total loaded trailer weight. Make sure that the vehicle payload (reduced by option weight) will accommodate trailer tongue load weight and the weight of passengers and cargo added to the towing vehicle. The addition of trailer tongue load weight, and the weight of passengers and cargo, cannot cause vehicle weights to exceed the rear GAWR (Gross Axle Weight Rating) or GVWR (Gross Vehicle Weight Rating). These ratings can be found on the vehicle's Safety Compliance Certification Label. **5th-Wheel Towing Notes:** This information also applies to models with Pickup Box Delete option (66D). Trailer kingpin weight should be 15-25% of total loaded trailer weight. Make sure that the vehicle payload (reduced by option weight) will accommodate trailer kingpin weight and the weight of passengers and cargo added to the towing vehicle. The addition of trailer kingpin weight, and the weight of passengers and cargo, cannot cause vehicle weights to exceed the rear GAWR (Gross Axle Weight Rating) or GVWR (Gross Vehicle Weight Rating). These ratings can be found on the vehicle's Safety Compliance Certification Label.







F-250 XL Crew Cab in Oxford White customized with 5" black step bars, smoked hood and side window deflectors, heavy-duty splash guards, commercial-grade tool/cargo box by Delta<sup>®1</sup> and Ford Commercial Graphics by 3M Original Wraps<sup>1</sup>

5th-wheel hitch kits (18K, 26.5K)

All-weather floor mats

Remote Access

Wheel-well liners

#### Exterior

- Exhaust tip
- Hitch-mounted bike carriers<sup>1</sup>
- Hood protector<sup>1</sup>
- Splash guards
- Sportz<sup>®</sup> tents<sup>1</sup>
- Stainless steel wheel covers<sup>1</sup>
- Step bars
- Trailer towing accessories
- Wheel lock kit

#### Interior

- Ash cup/coin holder
- Cargo organizers and protectors
- Carpeted floor mats
- Leather-trimmed interior seating<sup>1</sup>
- Protective seat covers<sup>1</sup>

#### Bed Products

- Bed extenders, mats and liners
- Cable lock<sup>1</sup>
- Retractable stake pocket tie-downs<sup>1</sup>
- Tonneau covers<sup>1</sup>

#### Electronics

- Crew Chief™ powered by Telogis<sup>®1</sup>
- Keyless entry keypad
- Portable DVD rear-seat entertainment systems<sup>1</sup>
- Remote start systems
- Speed control
- Warning sensor systems<sup>1</sup>



accessories.ford.com

<sup>1</sup>Ford Licensed Accessory.



2015  
**SUPER DUTY®**



[ford.com](http://ford.com)

**New Vehicle Limited Warranty.** We want your Ford F-Series Super Duty ownership experience to be the best it can be. Under this warranty, your new vehicle comes with 3-year/36,000-mile bumper-to-bumper coverage, 5-year/60,000-mile Powertrain Warranty coverage, 5-year/60,000-mile safety restraint coverage, and 5-year/unlimited-mile corrosion (perforation) coverage – all with no deductible. The Ford 6.7L Power Stroke® diesel engine gets 5-year/100,000-mile warranty coverage. Please ask your Ford Dealer for a copy of this limited warranty.

**Roadside Assistance.** Covers your vehicle for 5 years or 60,000 miles, so you have the security of knowing that help may be only a phone call away should you run out of fuel, lock yourself out of the vehicle or need towing. Your Ford Dealer can provide complete details on all of these advantages.

**Ford Credit.** Get the ride you want. Whether you plan to lease or finance, you'll find the choices that are right for you at Ford Credit. Ask your Ford Dealer for details or check us out at [fordcredit.com](http://fordcredit.com).

**Ford Extended Service Plan.** For a purchase or lease, the Ford Extended Service Plan (ESP) gives you peace-of-mind protection designed to cover key vehicle components and protect you from the cost of unexpected repairs. Ask your dealer for a Ford ESP, the only service contract backed exclusively by Ford and honored at all Ford dealerships.

**Insurance Services.** Get Ford Motor Company quality in your auto insurance. Our program offers industry-leading benefits and competitive rates. Call 1-877-367-3847, or visit us at [fordvip.com](http://fordvip.com) for a no-obligation quote. Insurance offered by American Road Services Company (in CA, American Road Insurance Agency), a licensed agency and subsidiary of Ford Motor Company.

**Genuine Ford Accessories** will be warranted for whichever provides you the greatest benefit: 24 months unlimited mileage, or the remainder of your Bumper-to-Bumper 3-year/36,000-mile New Vehicle Limited Warranty. Ford Licensed Accessories (FLA) are warranted by the accessory manufacturer's warranty. Ford Licensed Accessories are fully designed and developed by the accessory manufacturer and have not been designed or tested to Ford Motor Company engineering requirements. Contact your Ford Dealer for details and/or a copy of all limited warranties.

Comparisons based on competitive models (class is Full-Size Pickups over 8,500 lbs. GVWR), publicly available information and Ford certification data at time of release. Some features discussed may be optional. Vehicles throughout this PDF are shown with optional and aftermarket equipment. Features shown may be offered only in combination with other options or subject to additional ordering requirements or limitations. Dimensions and capacity ratings shown may vary due to optional features and/or production variability. Following release of the PDF, certain changes in standard equipment, options and the like, or product delays may have occurred which would not be included in these pages. Your Ford Dealer is the best source for up-to-date information. Ford Division reserves the right to change product specifications at any time without incurring obligations. Body manufacturers are responsible for compliance certification of the completed vehicle. The Ford New Vehicle Limited Warranty and any government certification made by Ford shall cover only the vehicle as manufactured by Ford and shall not extend to any addition, modification or change of or to the vehicle by the Ford Authorized Pool Account.

After trial period expires, SiriusXM Satellite Radio, SiriusXM Traffic and Travel Link subscriptions are sold separately or as a package, and are continuous until you call SiriusXM to cancel. See SiriusXM Customer Agreement for complete terms at [www.siriusxm.com](http://www.siriusxm.com). SiriusXM Traffic and Travel Link available in select markets. For more information, see [www.siriusxm.com/travellink](http://www.siriusxm.com/travellink) or [www.siriusxm.com/traffic](http://www.siriusxm.com/traffic). Sirius, XM and all related marks and logos are trademarks of Sirius XM Radio Inc. HD Radio is a proprietary trademark of iBiquity Digital Corp. iPod is a trademark of Apple Inc., registered in the U.S. and other countries. King Ranch is a registered trademark of King Ranch, Inc. Master Lock is a registered trademark of Master Lock Company LLC. Rancho is a registered trademark of Tenneco Automotive Operating Company Inc. PANDORA, the PANDORA logo, and the Pandora trade dress are trademarks or registered trademarks of Pandora Media, Inc. Used with permission. Sony is a registered trademark of the Sony Corporation. The Bluetooth word mark is a trademark of the Bluetooth SIG, Inc.

Follow Ford:

