

2016 | **EXPLORER**

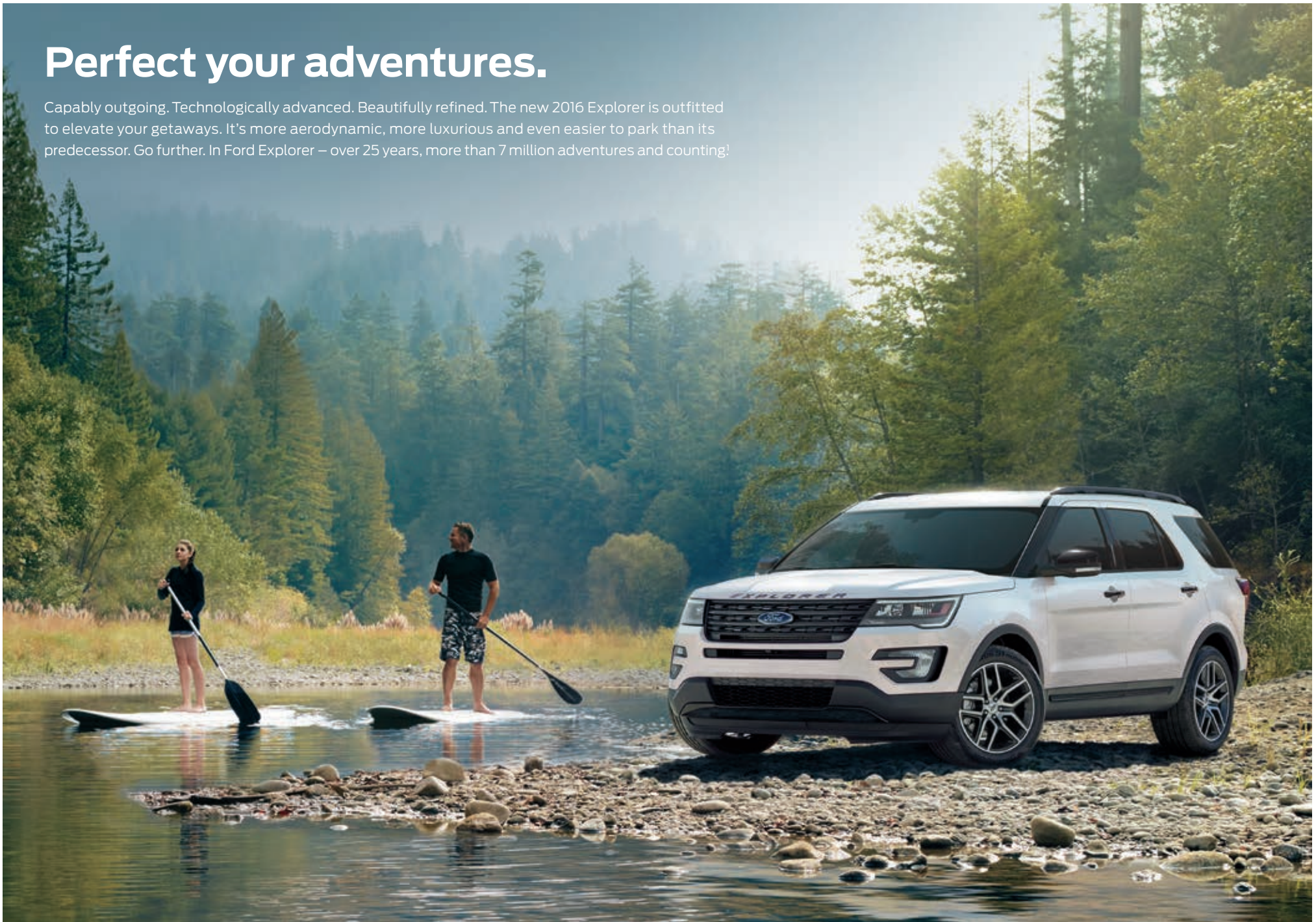


Go Further



# Perfect your adventures.

Capably outgoing. Technologically advanced. Beautifully refined. The new 2016 Explorer is outfitted to elevate your getaways. It's more aerodynamic, more luxurious and even easier to park than its predecessor. Go further. In Ford Explorer – over 25 years, more than 7 million adventures and counting!\*



*Sport. White Platinum Metallic Tri-coat. Available equipment.*

\*Through October 2014.

2016 **EXPLORER**  
ford.com







## Get going. Your choice of 3 ways.

Go with the 3.5L Ti-VCT V6 for 290 hp – unsurpassed in its class<sup>1</sup> among standard V6 engines. Go with the 2.3L EcoBoost<sup>®2</sup> for an EPA-estimated rating of 28 hwy mpg, which even the hybrid competition in its class can't beat.<sup>3</sup> Or go for the spirited 365-hp<sup>4</sup> 3.5L EcoBoost, standard on Sport and the all-new Platinum.

**Tow up to 5,000 lbs.**<sup>5</sup> when you equip Explorer with the Class III Trailer Tow Package (standard on Sport and Platinum) and either its 3.5L Ti-VCT or 3.5L EcoBoost engine. You can also pair the new Class II Trailer Tow Package with the 2.3L EcoBoost for up to 3,000 lbs.<sup>5</sup> of towing capability.

**To help you maintain control** of both the vehicle and your trailer, standard trailer sway control automatically reduces engine speed and selectively applies the brakes if trailer sway is detected.<sup>6</sup>

**You can shift gears for yourself** with the sport-inspired paddle shifters on the standard 6-speed SelectShift<sup>®</sup> automatic transmission. Or leave it to Explorer.

**Substantially more powerful** than the engine it replaces, the turbocharged, direct-injection 2.3L EcoBoost gives Explorer 280 hp<sup>4</sup> and 310 lb.-ft. of torque.<sup>4</sup> Just the get-up-and-go you need to get going on those adventures.

<sup>1</sup>Class is Large Utilities. <sup>2</sup>Available feature. <sup>3</sup>EPA-estimated rating: 19 city/28 hwy/22 combined mpg, 2.3L EcoBoost, FWD. Actual mileage will vary. <sup>4</sup>Tested with 93-octane fuel. <sup>5</sup>When properly equipped. <sup>6</sup>Remember that even advanced technology cannot overcome the laws of physics. It's always possible to lose control of a vehicle due to inappropriate driver input for the conditions.



## Go for top-of-the-line performance.

Explorer Sport and the all-new Platinum are powered exclusively by the twin-turbocharged, direct-injection 3.5L EcoBoost® engine. Producing 365 hp<sup>1</sup> and 350 lb.-ft. of torque<sup>1</sup> – best-in-class among V6 engines – the 3.5L EcoBoost is the most exhilarating way to go.

**The powerful stance** of Explorer Sport is accentuated by its 20" machined aluminum wheels with painted pockets, a unique blackout treatment on its headlamps and taillamps, "EXPLORER" lettering across its hood, and high-gloss black-painted exterior accents on its grille, door handles, liftgate appliqué, front and rear skid plate elements and more.

**The signature Sport look** carries indoors to a uniquely styled Ebony Black leather-trimmed interior with red accent stitching, satin chrome with Carbon Sport accents, and "SPORT" badging on the floor mats.

**Riding on a responsive,** fully independent sport-tuned suspension, Sport also features a rugged front strut tower support and wide wheels. For excellent driving dynamics, both Sport and Platinum include the Intelligent 4WD with Terrain Management System.™ It'll have you itching to flex those 3.5L EcoBoost muscles.



*Sport. Ruby Red Metallic Tinted Clearcoat. Available equipment.*

<sup>1</sup>Tested with 93-octane fuel.

2016 **EXPLORER**  
ford.com







## Dial up your capability.

Ready to go? Just choose a direction. As your adventures change, simply turn the dial to match. The Intelligent 4WD with Terrain Management System™<sup>1</sup> helps Explorer give you the seamless shift-on-the-fly confidence to keep right on going.

**Snow, Gravel, Grass** optimizes traction and control on a wide array of slippery surfaces.

**Sand** allows aggressive wheelspin to help you stay on top.

**Mud, Rut** lets the tires spin a bit if needed to help keep you on the go.

**Normal** is ideal for everyday driving on wet or dry paved roads.

**Hill Descent Control™<sup>2</sup>** (center button) regulates your speed on steep declines, so you can concentrate on maneuvering.



2016 **EXPLORER**  
ford.com

<sup>1</sup>Available feature. <sup>2</sup>Driver-assist features are supplemental and do not replace the driver's attention, judgment and need to control the vehicle.

## Kick to open and close.

Loading cargo into Explorer has never been easier than with its hands-free foot-activated liftgate.<sup>1</sup> Just kick your foot under the rear bumper with your Intelligent Access<sup>1</sup> key fob tucked in a pocket or purse. The liftgate detects the motion of your leg and the proximity of the fob, then opens or closes on its own. You can even program its fully opened height to the position that works best for you.

**Switching between cargo and people** is easy thanks to the versatility of the standard 2nd-row 60/40 split seat and 3rd-row 50/50 split seat.

**A class-exclusive PowerFold<sup>®1</sup> 3rd-row seat** is standard on Limited this year, as well as on Sport and Platinum. You can also enjoy power-assist fold<sup>1</sup> with the 2nd-row bucket seats<sup>1</sup> on Limited, Sport and Platinum.

**Pack up to 81.7 cu. ft. of gear** in back when you fold the 2nd- and 3rd-row seats flat. Or stow up to 21.0 cu. ft.<sup>2</sup> of cargo behind the 3rd row when all seats are occupied. Explorer easily adjusts as your adventures evolve.



<sup>1</sup>Available feature. <sup>2</sup>Including rear seat well.





## Transport up to 7 in all-new Platinum luxury.

From the premium Nirvana leather trim featured throughout the cabin to its industry-exclusive 500-watt Audio System from Sony® with Clear Phase™ and Live Acoustics™ technology, the all-new Explorer Platinum is designed to elevate the SUV experience well beyond your expectations.

**Massage your lumbar region** and upper leg area, and change your seat contour with the power 1st-row multicontour seats with class-exclusive Active Motion.<sup>1</sup> Exquisite details such as the real Brown Ash Swirl wood and aluminum accents, and precisely quilted stitching are unique to Platinum.

**Recall your memory settings** for the 10-way power driver's seat,<sup>1</sup> power-adjustable pedals<sup>1</sup> and power-folding sideview mirrors,<sup>1</sup> with the touch of a button.

**Charge your phones and tablets** nearly 2 times faster than previous ports by using the smart-charging USB ports,<sup>1</sup> new to Explorer this year.

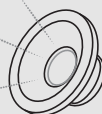
**With the most 2nd-row head room and 3rd-row leg room** in its class, Explorer keeps guests happy. Riders in the 2nd row can also enjoy bucket seats<sup>1</sup> with a pass-through to the 3rd row, or with a 2nd-row center console!<sup>1</sup> It's your call.

HEATED/COOLED



1ST-ROW SEATS<sup>1</sup>

500-WATT SYSTEM



FROM SONY<sup>1</sup>

HEATED



STEERING<sup>1</sup>

All-new Platinum. Medium Soft Ceramic premium Nirvana leather trim. Available equipment.

<sup>1</sup>Available feature.

2016 **EXPLORER**  
ford.com



## Command it with your voice.

**Voice-activated SYNC<sup>®1</sup> technology helps you keep your eyes on the road and hands on the wheel. SYNC. Say the word.**

- **Hands-free calling** lets you make a call with a simple push of a button along with the sound of your voice.
- **Automatic phone book download** transfers the names and numbers in your compatible phone automatically, once paired.
- **Voice-activated music commands** let you say what music you want to hear and listen to it easily with voice-activated search, or say “Bluetooth<sup>®</sup> audio” to stream content from your phone.
- **SYNC AppLink<sup>™2</sup>** lets you control some of your favorite compatible mobile apps with your voice.
- **911 Assist<sup>®3</sup>** is a convenient no-charge feature that allows you to connect your compatible cell phone to help call 911, even if you can't.

**Upgrade to SYNC with MyFord Touch.<sup>®1,4</sup>**

- **An LCD screen** lets you easily read and control the things you want.
- **Voice-activated navigation<sup>4</sup>** features voice-recognition technology that lets you say commands as conversational as “find a restaurant.” The system then helps guide you to your destination with audible turn-by-turn directions.
- **Voice control climate** lets you use your voice to adjust the climate, so you can stay comfortable without having to lift a finger.

| SYNC

*All-new Platinum. Medium Soft Ceramic premium Nirvana leather trim.  
SYNC with MyFord Touch. Available equipment*



<sup>1</sup>Driving while distracted can result in loss of vehicle control. Only use SYNC/MyFord Touch/other devices, even with voice commands, when it is safe to do so. Some features may be locked out while the vehicle is in gear. Not all features are compatible with all phones. <sup>2</sup>Available feature. SYNC AppLink is available on select models and compatible with select smartphone platforms. SYNC AppLink is not compatible with MyFord Touch. Commands may vary by phone and AppLink software. <sup>3</sup>The vehicle's electrical system (including the battery), the wireless service provider's signal and a connected mobile phone must all be available and operating for 911 Assist to function properly. These systems may become damaged in a crash. The paired mobile phone must be connected to SYNC, and the 911 Assist feature enabled, in order for 911 to be dialed. When the feature is ON, 911 Assist uses your paired and connected mobile phone to assist occupants to contact emergency services by dialing 911 if your airbag deploys or, on certain vehicles, if the emergency fuel pump shut-off is activated. <sup>4</sup>Available feature.

2016 **EXPLORER**  
ford.com







## Connect with your world.

**SiriusXM® Satellite Radio** welcomes you to the World of SiriusXM.<sup>1</sup> Enjoy more than 150 channels including commercial-free music, plus live sports, news and exclusive entertainment, with a 6-month trial subscription to the All Access package included with your new vehicle. You'll hear every channel available, plus you can listen online and on the SiriusXM app.<sup>1</sup>

**Navigation<sup>2</sup> with SiriusXM Traffic and Travel Link<sup>®</sup>** includes a 5-year complimentary SiriusXM Traffic and Travel Link<sup>1</sup> trial subscription. Global Positioning System (GPS) technology is combined with 3-D mapping and provides voice-guided turn-by-turn directions. With SiriusXM Traffic and Travel Link, you'll get detailed traffic information, plus current and forecasted weather, gas station locations and prices, sports scores and schedules, and movie theater locations with show listings and times.

**(((SiriusXM)))**

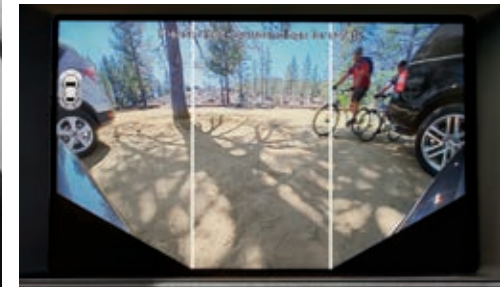
*All-new Platinum. SYNC<sup>®</sup> with MyFord Touch<sup>®</sup>. Available equipment.*



2016 **EXPLORER**  
ford.com

<sup>1</sup>SiriusXM Satellite Radio, SiriusXM Traffic and SiriusXM Travel Link subscriptions are sold separately or as a package by SiriusXM after your trial period, and are continuous until you call SiriusXM at 1-866-635-2349 to cancel. If you decide to continue service after your trial, the subscription plan you choose will automatically renew thereafter and you will be charged according to your chosen payment method at then-current rates. Fees and taxes apply. All fees and programming subject to change. See Customer Agreement for complete terms and more information at [www.siriusxm.com](http://www.siriusxm.com). <sup>2</sup>Available feature.





## Maneuver it easier than before.

Perpendicular. Parallel. Backing in. Heading out. The new Explorer offers advanced technologies<sup>1</sup> to ease you through all sorts of challenging situations. Class-exclusive, enhanced active park assist<sup>1</sup> uses side parking sensors to help you find a spot and steers into place, while you control the gear shifter, and the brake and accelerator pedals. It can steer out of tight parallel spots too. And alert you to obstacles near the sides of the vehicle as you go.

**Stay alert to traffic** detected in blind spots thanks to BLIS<sup>®</sup> (Blind Spot Information System) with cross-traffic alert.<sup>1</sup> It helps warn you using LED lights embedded in the sideview mirrors.<sup>2</sup>

**Get a heads-up** from adaptive cruise control and collision warning with brake support.<sup>1</sup> This system helps maintain your choice of 4 preset gaps from the vehicle in front of you. It can also alert you to a potential collision and help by pre-charging the brake system if one is detected. Our Lane-Keeping System<sup>1</sup> can detect lane markings and send vibration pulses to the steering wheel, and apply steering torque if needed, prompting you to steer toward center.<sup>3</sup>

**See around corners** with the class-exclusive new front 180° camera with washer.<sup>1</sup> It can see 60° to the left and right, displaying a view around corners, down alleys and out of parking spots while you drive slowly forward.

<sup>1</sup>Available feature. Driver-assist features are supplemental and do not replace the driver's attention, judgment and need to control the vehicle.

<sup>2</sup>BLIS replaces standard integrated blind spot mirrors. <sup>3</sup>Lane-Keeping System does not control steering.



# Venture out with confidence.

In addition to its standard full-color rear view camera with washer and 7 standard airbags, you can now equip Explorer with class-exclusive inflatable rear safety belts<sup>1</sup> in its 2nd-row outboard seating positions.

**Parents of teens** can encourage smart driving habits with our class-exclusive MyKey,<sup>®</sup> which lets you block their calls and text messages while they're driving.

**If it senses you're taking a curve too quickly**, Curve Control helps reduce the vehicle's speed by up to 10 mph in approximately 1 second.<sup>2</sup> It's standard as part of AdvanceTrac<sup>®</sup> with RSC<sup>®</sup> (Roll Stability Control<sup>™</sup>).

**For a comprehensive list** of Safety & Security features on every Explorer, please turn the page.



FRONT-PASSENGER



KNEE AIRBAG

INFLATABLE



2ND-ROW SAFETY BELTS<sup>1</sup>



CURVE CONTROL

*XLT. White Platinum Metallic Tri-coat. Available equipment.*

<sup>1</sup>Available feature. <sup>2</sup>Remember that even advanced technology cannot overcome the laws of physics. It's always possible to lose control of a vehicle due to inappropriate driver input for the conditions.

2016 **EXPLORER**  
ford.com





# Explorer Specifications



## Engines/EPA-Estimated Ratings<sup>1</sup> & Dimensions

### 3.5L Ti-VCT V6

290 hp @ 6,500 rpm  
255 lb.-ft. of torque @ 4,000 rpm  
6-speed SelectShift<sup>®</sup> automatic  
FWD 17 city/24 hwy/20 combined mpg  
4WD 16 city/23 hwy/19 combined mpg

### 2.3L EcoBoost<sup>®</sup> I-4

280 hp @ 5,600 rpm<sup>2</sup>  
310 lb.-ft. of torque @ 3,000 rpm<sup>2</sup>  
6-speed automatic  
FWD 19 city/28 hwy/22 combined mpg  
4WD 18 city/26 hwy/21 combined mpg

### 3.5L EcoBoost V6

365 hp @ 5,500 rpm<sup>2</sup>  
350 lb.-ft. of torque @ 3,500 rpm<sup>2</sup>  
6-speed SelectShift automatic  
4WD 16 city/22 hwy/18 combined mpg

### Exterior

Wheelbase	112.8"
Length	198.3"
Height	70.0"
Width – Excluding mirrors	78.9"
Width – Including mirrors	90.2"
Width – Mirrors folded	82.5"
Liftover height	31.1"

### Interior

	1st/2nd/3rd Row
Head room	41.4"/40.6"/37.8"
Shoulder room	61.5"/61.0"/50.8"
Hip room	57.3"/56.8"/40.7"
Leg room	42.9" (max.)/39.5"/33.3"

### Capacities (cu. ft.)

Passenger volume	151.6
Cargo volume behind 1st row	81.7
Cargo volume behind 2nd row	43.9
Cargo volume behind 3rd row <sup>3</sup>	21.0
Fuel tank (gal.)	18.6
Max. towing (lbs.) <sup>4</sup>	5,000

## Standard Features

### Mechanical

4-wheel disc Anti-Lock Brake System (ABS)  
6-speed SelectShift automatic transmission with paddle shifters  
18.6-gallon fuel tank  
Compact spare  
Cruise control  
Easy Fuel<sup>®</sup> capless fuel filler  
Electric power-assisted steering  
Hill start assist  
Independent front and rear suspensions  
Trailer sway control

### Seating

1st-row bucket seats  
2nd-row 60/40 split fold-flat seat with fore/aft adjustable 40 section  
3rd-row 50/50 split fold-flat seat  
4-way driver and front-passenger head restraints

### Interior

1st-, 2nd- and 3rd-row dome/map lights  
1st-row center console with armrest and storage  
12-volt powerpoints (2 in 1st row, 1 in 2nd row and 1 in rear cargo area)  
Accessory delay for power features  
Adjustable driver and front-passenger sun visors with covered and illuminated vanity mirrors  
Air conditioning with auxiliary rear controls  
Cabin air filter  
Cargo area hooks  
Cupholders (12)  
Front-passenger (1) and B-pillar (2) assist handles  
Load floor tie-down hooks  
Locking glove compartment  
Overhead console with sunglasses holder  
Power door locks  
Power windows  
Rear-window defroster  
Steering wheel-mounted cruise, audio, and 5-way controls (2)

### Exterior

Automatic headlamps  
Daytime running lamps (on/off controllable)  
Dual bright exhaust tips  
LED headlamps with halogen reflector high beams  
LED taillamps  
Power sideview mirrors with integrated blind spot mirrors  
Privacy glass (rear doors, rear quarter windows and liftgate window)  
Rear spoiler  
Roof-mounted antenna  
Windshield wipers – Front: speed-sensitive, variable-intermittent with washer; rear: 2-speed with washer

### Safety & Security

Personal Safety System<sup>™</sup> for driver and front passenger includes dual-stage front airbags<sup>5</sup>, safety belt pretensioners, safety belt energy-management retractors, safety belt usage sensors, driver's seat position sensor, crash severity sensor, restraint control module and Front-Passenger Sensing System  
AdvanceTra<sup>®</sup> with RSC<sup>®</sup> (Roll Stability Control<sup>™</sup>) and Curve Control  
Autolock  
Battery saver with headlamps-off delay  
Belt-Minder<sup>®</sup> front safety belt reminder  
Child-safety rear door locks  
Front height-adjustable shoulder safety belts  
Front-passenger knee airbag<sup>5</sup>  
Front-seat side airbags<sup>5</sup>  
Illuminated Entry System  
Individual Tire Pressure Monitoring System (excludes spare)  
LATCH – Lower Anchors and Tether Anchors for Children (2nd-row outboard and 3rd-row passenger-side seating positions)  
MyKey<sup>®</sup>  
Rear view camera with 180<sup>°</sup> view and washer  
Safety Canopy<sup>®</sup> System with side-curtain airbags<sup>5</sup> and rollover sensor  
SecuriLock<sup>®</sup> Passive Anti-Theft System  
SOS Post-Crash Alert System<sup>™</sup> unlocks doors, flashes hazard lights and sounds horn after airbag deployment or safety belt pretensioner activation in certain collisions<sup>5</sup>

Dimensions may vary by trim level. <sup>1</sup>Actual mileage will vary. <sup>2</sup>Tested with 93-octane fuel. <sup>3</sup>Including rear seat well. <sup>4</sup>Maximum weight shown is for properly equipped vehicle with required equipment and a 150-lb. driver. Weight of additional options, equipment, passengers and cargo must be deducted from this weight. For additional information, see your Ford Dealer. <sup>5</sup>Always wear your safety belt and secure children in the rear seat. <sup>6</sup>SOS hardware may become damaged or the battery may lose power in a crash, which could prevent operation. Not all crashes will activate an airbag or safety belt pretensioner.





## Explorer

**Equipment Group 100A**  
Includes all standard features, plus:

### Mechanical

3.39 non-limited-slip rear axle  
3.5L Ti-VCT V6 engine  
58-amp-hr battery  
175-amp alternator  
Front-wheel drive (FWD)

### Seating

1st-row bucket seats with 8-way power driver's seat with manual lumbar and 4-way manual passenger seat  
Cloth seats

### Interior

1st- and 2nd-row carpeted floor mats  
1st- and 2nd-row door-sill scuff plates with embossed "EXPLORER" logo  
AM/FM stereo/single-CD player with MP3 capability and 6 speakers  
Black metallic center stack appliqué  
Dark Galvano instrument panel and door-trim appliques  
Ford SYNC® voice-activated, in-vehicle communications system with 4.2" color LCD screens in instrument cluster and center stack, and media hub with 1 smart-charging USB port  
Manual day/night rearview mirror  
Manual-tilt-/telescoping steering column  
Power windows with front one-touch-up/-down window feature

### Exterior

18" painted aluminum wheels with P245/60R18 all-season BSW tires  
Black door handles, sideview mirrors, roof-rack side rails, lower bodyside cladding and wheel-lip moldings  
Chrome liftgate appliqué  
Dark Foundry Metallic-painted grille with chrome bars  
Remote Keyless Entry System with 2 integrated keyhead transmitter remotes

### Available Options & Packages

2.3L EcoBoost® I-4 engine (includes low-rolling-resistance tires with FWD)  
All-weather floor mats  
Ash cup/coin holder with lighter element  
Cargo security cover

**Class II Trailer Tow Package** includes class II trailer hitch receiver and 4-pin wiring harness (requires 2.3L EcoBoost engine and Intelligent 4WD)

**Class III Trailer Tow Package** includes class III trailer hitch receiver, engine oil cooler and 7-/4-pin wiring harness (requires 3.5L Ti-VCT engine and Intelligent 4WD)

Inflatable rear safety belts for 2nd-row outboard seating positions  
Intelligent 4WD with Terrain Management System™ and Hill Descent Control™ (includes front recovery hooks)  
Rear bumper protector  
Rear cargo well protector  
Roof-rail crossbars  
SiriusXM® Satellite Radio with 6-month trial subscription  
Splash guards

## XLT

**Equipment Group 200A**  
Includes all Explorer features, plus:

### Mechanical

230-amp alternator  
Heavy-duty front and rear brake calipers  
Intelligent Access with push-button start  
Perimeter alarm

### Seating

10-way power driver's seat with power lumbar  
6-way power front-passenger seat with manual lumbar  
Unique cloth seats

### Interior

Galvano instrument panel and door-trim appliques  
Leather-wrapped steering wheel and shift knob  
SiriusXM Satellite Radio with 6-month trial subscription

### Exterior

18" painted aluminum wheels (FWD)  
18" 5-spoke painted aluminum wheels (4WD)  
Black lower bodyside cladding with chrome accents  
Body-color door handles  
Fog lamps  
Foundry Gray Metallic-painted grille with chrome bars  
Gloss Black, heated sideview mirrors with LED turn signal indicators and security approach lamps  
LED signature lighting  
Reverse Sensing System  
SecuriCode™ invisible keypad  
Silver-painted front and rear skid plate elements  
Silver roof-rack side rails

### Available Equipment Groups

**Equipment Group 201A** – Auto-dimming rearview mirror + Premium Audio System with 9 speakers + 2nd-row smart-charging USB port + dual-zone electronic automatic temperature control + Remote Start System + 10-way power front-passenger seat + **Driver Connect Package** includes SYNC with MyFord Touch® voice-activated, in-vehicle connectivity system with 8" color LCD touch screen in center stack; two 4.2" color LCD configurable screens in instrument cluster; media hub with smart-charging USB port and SD card reader; smart-charging USB port in the front center console; and SYNC Services<sup>2</sup> for Traffic, Directions and Information

**Equipment Group 202A** – Includes all content of 201A + Forward Sensing System + **Comfort Package** includes leather-trimmed seating surfaces and heated 1st-row seats

### Available Options & Packages

2.3L EcoBoost I-4 engine (includes low-rolling-resistance tires with FWD; n/a with 20" polished aluminum wheels)  
18" 5-spoke painted aluminum wheels (FWD with 3.5L engine)  
20" polished aluminum wheels (requires 201A or 202A; n/a with 2.3L EcoBoost engine)  
2nd-row bucket seats (requires 202A)  
2nd-row center console (requires 2nd-row bucket seats and 202A)  
All-weather floor mats  
Ash cup/coin holder with lighter element  
**BLIS® Plus Inflatable Rear Safety Belt Package** includes BLIS (Blind Spot Information System) with cross-traffic alert, inflatable rear safety belts in 2nd-row outboard seating positions, and auto-dimming feature on driver's sideview mirror (requires 201A or 202A)  
Cargo security cover  
**Class II Trailer Tow Package** includes class II trailer hitch receiver and 4-pin wiring harness (requires 2.3L EcoBoost engine)  
**Class III Trailer Tow Package** includes class III trailer hitch receiver, engine oil cooler and 7-/4-pin wiring harness (requires 3.5L Ti-VCT engine)  
**Cold Weather Package** includes heated 1st-row seats, heated steering wheel and Forward Sensing System (requires 201A)  
Dual Headrest DVD by INVISION™<sup>3</sup> (n/a with Class II Trailer Tow Package)  
Dual-panel moonroof (requires 201A or 202A)  
Hands-free foot-activated liftgate (requires 201A or 202A)  
Heated steering wheel (requires 202A; included with Cold Weather Package)  
Inflatable rear safety belts for 2nd-row outboard seating positions (requires 200A)  
Intelligent 4WD with Terrain Management System and Hill Descent Control (includes front recovery hooks)  
LED fog lamps  
Rear bumper protector  
Rear cargo well protector  
Roof-rail crossbars  
Splash guards  
Voice-activated Navigation System with integrated SiriusXM Traffic and Travel Link® with 5-year subscription (requires 201A or 202A)  
Wheel lock kit (requires 201A or 202A and 20" wheels)

XLT. Ebony Black leather trim. Equipment Group 202A. Available equipment.

Individual Tire Pressure Monitoring System.

XLT. Intelligent Access with push-button start.

XLT. Heated steering wheel! MyFord Touch display!<sup>1</sup>

<sup>1</sup>Available feature. <sup>2</sup>SYNC Services varies by trim level and model year and may require a subscription. Traffic alerts and turn-by-turn directions available in select markets. Message and data rates may apply. Ford Motor Company reserves the right to change or discontinue this product service at any time without prior notification or incurring any future obligation. <sup>3</sup>Ford Licensed Accessory.



18" Painted Aluminum  
Standard: Explorer & XLT FWD



18" 5-Spoke Painted Aluminum  
Standard: XLT 4WD  
Available: XLT FWD with 3.5L engine



20" Polished Aluminum  
Available: XLT



# Limited

## Equipment Group 300A

Includes all XLT Equipment Group 202A features, plus:

### Mechanical

72-amp-hr battery

### Seating

1st-row heated and cooled, 10-way power bucket seats (including power lumbar and recline) with driver's side memory feature

2nd-row 60/40 split fold-flat seat with heated outboard seats, fore/aft adjustable 40 section, and armrest with dual cupholders

Leather-trimmed seating surfaces

PowerFold® 3rd-row seat

### Interior

1st- and 2nd-row door-sill scuff plates with bright "EXPLORER" logo

110-volt power outlet

Ambient lighting

Audio System from Sony® with 12 speakers and HD Radio™ Technology

Cargo net

Dual 2nd-row smart-charging USB ports

Front 180° camera with washer

Hands-free foot-activated liftgate

Heated steering wheel

Multipiece satin chrome and Rosewood film instrument panel and door-trim appliques

Power-adjustable pedals with memory

Power-tilt/-telescoping steering column

Universal garage door opener

Voice-activated Navigation System with integrated SiriusXM® Traffic and Travel Link® with 5-year subscription

### Exterior

20" premium painted aluminum wheels with P255/50R20 all-season BSW tires

Body-color, power-folding, heated sideview mirrors with autofold, LED turn signal indicators, security approach lamps and driver's side memory

Bright silver-painted grille with chrome bars

Chrome door handles

Chrome roof-rack side rails

### Available Equipment Groups

**Equipment Group 301A** – Enhanced active park assist with Parallel Parking, Park Out Assist, Reverse Perpendicular Parking, and Forward and Side Sensing Systems + Lane-Keeping System + **BLIS® Plus Inflation Rear Safety Belt Package** includes BLIS (Blind Spot Information System) with cross-traffic alert, inflatable rear safety belts in 2nd-row outboard seating positions, and auto-dimming feature on driver's sideview mirror + rain-sensing windshield wipers + auto high beams + 1st-row multicountour bucket seats with Active Motion®

**Equipment Group 303A** – Includes all content of 301A + 2.3L EcoBoost® I-4 engine + Intelligent 4WD with Terrain Management System™ and Hill Descent Control™ (includes front recovery hooks) + 3.51:1 axle ratio + P245/50R20 all-season BSW tires

### Available Options & Packages

2.3L EcoBoost I-4 engine (included with 303A)

20" polished aluminum wheels (requires 300A or 301A)

2nd-row heated bucket seats with power-assist fold feature

2nd-row center console (requires 2nd-row bucket seats)

Adaptive cruise control and collision warning with brake support

All-weather floor mats

Ash cup/coin holder with lighter element

**BLIS Plus Inflation Rear Safety Belt Package** (included with 301A)

Cargo security cover

**Class II Trailer Tow Package** includes class II trailer hitch receiver and 4-pin wiring harness (requires 300A or 301A and 2.3L EcoBoost engine)

**Class III Trailer Tow Package** includes class III trailer hitch receiver, engine oil cooler and 7-/4-pin wiring harness (requires 300A or 301A and 3.5L Ti-VCT engine)

Dual Headrest DVD by INVISION™¹ (n/a with Class II Trailer Tow Package)

Dual-panel moonroof

Intelligent 4WD with Terrain Management System and Hill Descent Control (includes front recovery hooks)

LED fog lamps

Rear bumper protector

Rear cargo well protector

Roof-rail crossbars

Splash guards

Wheel lock kit



Medium Light Camel leather trim with perforated inserts. Equipment Group 301A?

Enhanced active park assist with Parallel Parking, Park Out Assist, Reverse Perpendicular Parking, and Forward and Side Sensing Systems?

Dual-panel moonroof?

Dual 2nd-row smart-charging USB ports.



20" Premium Painted Aluminum Standard



20" Polished Aluminum Available

¹Ford Licensed Accessory. ²Available feature.





*Ebony Black leather trim with perforated inserts and red accent stitching. Equipment Group 401A.<sup>1</sup> Available equipment.*

*"EXPLORER" hood lettering. High-gloss black-painted grille.*

*1st-row door-sill scuff plates with illuminated "EXPLORER" logo.*

*Blackout treatment on taillamps. "SPORT" liftgate badge. High-gloss black liftgate appliqué. Bright dual exhaust tips.*



20" Machined Aluminum  
with Painted Pockets  
Standard

## Sport

### Equipment Group 400A

*Includes all XLT Equipment Group 202A features, plus:*

#### Mechanical

3.16 non-limited slip rear axle

3.5L EcoBoost® V6 engine

72-amp-hr battery

**Class III Trailer Tow Package** includes class III trailer hitch receiver and 7-/4-pin wiring harness  
Intelligent 4WD with Terrain Management System™ and Hill Descent Control™ (includes front recovery hooks)

Sport-tuned suspension

#### Seating

1st-row heated, 10-way power bucket seats (including power lumbar and recline) with driver's side memory feature

2nd-row 60/40 split fold-flat seat, fore/aft adjustable 40 section, and armrest with dual cupholders

Leather-trimmed seating surfaces with red accent stitching

PowerFold® 3rd-row seat

#### Interior

1st- and 2nd-row carpeted floor mats with unique "SPORT" badging

1st-row door-sill scuff plates with illuminated "EXPLORER" logo

Audio System from Sony® with 12 speakers and HD Radio™ Technology

Cargo net

Multipiece satin chrome and Carbon Sport instrument panel and door-trim appliques

#### Exterior

20" machined aluminum wheels with painted pockets and P255/50R20 all-season BSW tires

Blackout treatment on headlamps and taillamps

Bright dual exhaust tips integrated into the lower bumper fascia

"EXPLORER" hood lettering

High-gloss black door handles

High-gloss black front and rear skid plate elements

High-gloss black-painted grille

High-gloss black liftgate appliqué

High-gloss black lower bodyside cladding

High-gloss black roof-rack side rails

### Available Equipment Group

**Equipment Group 401A** – Voice-activated Navigation System with integrated SiriusXM® Traffic and Travel Link® with 5-year subscription + **BLIS® Plus Inflatable Rear Safety Belt Package** includes BLIS (Blind Spot Information System) with cross-traffic alert, inflatable rear safety belts in 2nd-row outboard seating positions, and auto-dimming rearview mirror + hands-free foot-activated liftgate + power-adjustable pedals with memory + power-tilt/-telescoping steering column + heated steering wheel + heated and cooled 1st-row seats + front 180° camera with washer + ambient lighting + universal garage door opener + power-folding, heated sideview mirrors with autofold + driver's seat memory feature + 110-volt power outlet + dual 2nd-row smart-charging USB ports

### Available Options & Package

2nd-row bucket seats with power-assist fold feature (requires hands-free foot-activated liftgate)

2nd-row center console (requires 2nd-row bucket seats)

Adaptive cruise control and collision warning with brake support (requires 401A)

All-weather floor mats

Ash cup/coin holder with lighter element

**BLIS Plus Inflatable Rear Safety Belt Package** (included with 401A)

Cargo security cover

Dual Headrest DVD by INVISION™<sup>2</sup>

Dual-panel moonroof

Hands-free foot-activated liftgate (included with 401A)

Heated steering wheel (included with 401A)

LED fog lamps

P265/45ZR20 summer-only tires<sup>3</sup> (requires 401A)

Rear bumper protector

Rear cargo well protector

Roof-rail crossbars

Splash guards

Voice-activated Navigation System with integrated SiriusXM Traffic and Travel Link with 5-year subscription (included with 401A)

Wheel lock kit

<sup>1</sup>Available feature. <sup>2</sup>Ford Licensed Accessory. <sup>3</sup>Ford does not recommend using summer tires when temperatures drop to approximately 40°F or below (depending on tire wear and environmental conditions) or in snow/ice conditions. If the vehicle must be driven in these conditions, Ford recommends using all-season or snow tires.



# Platinum

## Equipment Group 600A

Includes all Sport Equipment Group 401A features, plus:

### Seating

1st-row multicontour bucket seats with Active Motion® and "PLATINUM" embroidery

2nd-row heated seats

Medium Soft Ceramic premium Nirvana leather-trimmed seating surfaces with quilting and perforated inserts

### Interior

1st- and 2nd-row carpeted floor mats with unique badging

500-watt Audio System from Sony® with Clear Phase™ and Live Acoustics™ technology

Adaptive cruise control and collision warning with brake support

All-digital instrument cluster

Door inserts with unique quilting

Dual-panel moonroof

Enhanced active park assist with Parallel Parking, Park Out Assist, Reverse Perpendicular Parking, and Forward and Side Sensing Systems

Heated steering wheel with real Brown Ash Swirl wood accent and unique stitching

Leather-wrapped instrument panel top, center console lid, and door armrest and rollovers

Multipiece real aluminum and real Brown Ash Swirl wood instrument panel and door-trim appliques

### Exterior

20" bright machined aluminum wheels with tarnished dark-painted pockets

Auto high beams

Lane-Keeping System

LED fog lamps

Rain-sensing windshield wipers

Satin chrome door handles

Satin chrome liftgate appliqué

Satin chrome lower bodyside cladding inserts

Satin chrome roof-rack side rails

Satin chrome sideview mirror caps

Silver-painted front and rear skid plate elements

Unique satin chrome grille

### Available Options

2nd-row heated bucket seats with power-assist fold feature

2nd-row center console (requires 2nd-row bucket seats)

All-weather floor mats

Ash cup/coin holder with lighter element

Cargo security cover

Dual Headrest DVD by INVISION™<sup>1</sup>

Rear bumper protector

Rear cargo well protector

Roof-rail crossbars

Splash guards

Wheel lock kit



Medium Soft Ceramic premium Nirvana leather trim with quilting and perforated inserts.

500-watt Audio System from Sony with Clear Phase and Live Acoustics technology.

Brushed-aluminum Ford Oval on the steering wheel.

LED signature lighting.



20" Bright Machined Aluminum with Tarnished Dark-Painted Pockets Standard

<sup>1</sup>Ford Licensed Accessory.



## Exteriors



White Platinum Metallic Tri-coat



Oxford White



Ingot Silver\*



Ruby Red Metallic Tinted Clearcoat



Bronze Fire Metallic Tinted Clearcoat



Blue Jeans\*



Caribou\*



Magnetic\*



Guard\*

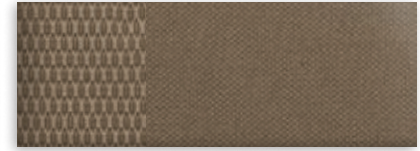


Shadow Black

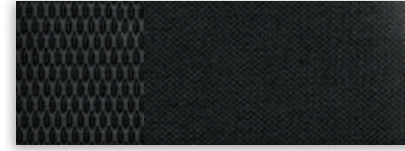
## Interiors



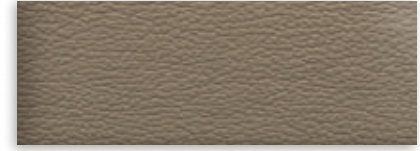
1 Medium Light Camel Cloth



2 Medium Light Camel Cloth



3 Ebony Black Cloth



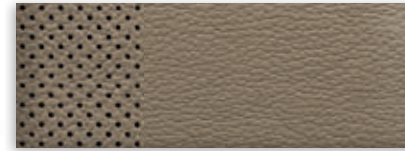
4 Medium Light Camel Leather



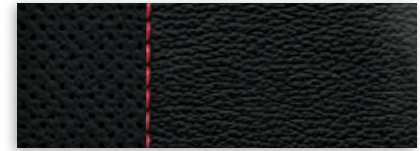
5 Ebony Black Leather



6 Ebony Black Leather with Perforated Inserts



7 Medium Light Camel Leather with Perforated Inserts



8 Ebony Black Leather with Perforated Inserts and Red Accent Stitching



9 Medium Soft Ceramic Premium Nirvana Leather with Quilting and Perforated Inserts

Exteriors	Interiors								
	Explorer	XLT				Limited	Sport	Platinum	
White Platinum Metallic Tri-coat <sup>1</sup>		2	3	4	5	6	7	8	9
Oxford White	1	2	3	4	5				
Ingot Silver	1	2	3	4	5	6	7	8	9
Ruby Red Metallic Tinted Clearcoat <sup>1</sup>	1	2	3	4	5	6	7	8	9
Bronze Fire Metallic Tinted Clearcoat <sup>1</sup>		2	3	4	5	6	7	8	9
Blue Jeans	1	2	3	4	5	6	7		9
Caribou		2	3	4	5	6	7		9
Magnetic		2	3	4	5	6	7	8	9
Guard		2	3	4	5	6	7		9
Shadow Black	1	2	3	4	5	6	7	8	9

4, 5 Requires Comfort Package

<sup>1</sup>Additional charge.

Colors are representative only. See your dealer for actual paint/trim options.

\*Metallic.





Limited in Magnetic accessorized with smoked hood and side window deflectors, molded splash guards, roof-mounted crossbars, and roof-mounted bike carrier by THULE®<sup>1</sup>

Dual Headrest DVD by INVISION™<sup>1</sup>

All-weather floor mats

Remote Access

Interior cargo cover, cargo area protector and rear bumper protector

#### Exterior

- Full vehicle cover<sup>1</sup>
- Hood protector<sup>1</sup>
- Locking fuel plug
- Racks and carriers<sup>1</sup>
- Sportz® tent<sup>1</sup>
- Trailer towing accessories
- Wheel lock kits

#### Interior

- Ash cup/coin holders
- Cargo organizers and protectors
- In-vehicle safe<sup>1</sup>
- Interior light kit
- Interior rear consoles
- Premium carpeted floor mats
- Protective seat covers<sup>1</sup>
- Tablet cradle<sup>1</sup>

#### Electronics

- Keyless entry keypad
- Warning sensor systems<sup>1</sup>





Go Further

[ford.com/explorer](http://ford.com/explorer)

Follow Ford:



**New Vehicle Limited Warranty.** We want your Ford Explorer ownership experience to be the best it can be. Under this warranty, your new vehicle comes with 3-year/36,000-mile bumper-to-bumper coverage, 5-year/60,000-mile Powertrain Warranty coverage, 5-year/60,000-mile safety restraint coverage, and 5-year/unlimited-mile corrosion (perforation) coverage – all with no deductible. Please ask your Ford Dealer for a copy of this limited warranty.

**Roadside Assistance.** Covers your vehicle for 5 years or 60,000 miles, so you have the security of knowing that help may be only a phone call away should you run out of fuel, lock yourself out of the vehicle or need towing. Your Ford Dealer can provide complete details on all of these advantages.

**Ford Credit.** Get the ride you want. Whether you plan to lease or finance, you'll find the choices that are right for you at Ford Credit. Ask your Ford Dealer for details or check us out at [fordcredit.com](http://fordcredit.com).

**Ford Extended Service Plan.** For a purchase or lease, the Ford Extended Service Plan (ESP) gives you peace-of-mind protection designed to cover key vehicle components and protect you from the cost of unexpected repairs. Ask your dealer for a Ford ESP, the only service contract backed exclusively by Ford and honored at all Ford Lincoln dealerships.

**Insurance Services.** Get Ford Motor Company quality in your auto insurance. Our program offers industry-leading benefits and competitive rates. Call 1-877-367-3847, or visit us at [fordvip.com](http://fordvip.com) for a no-obligation quote. Insurance offered by American Road Services Company (in CA, American Road Insurance Agency), a licensed agency and subsidiary of Ford Motor Company.

**Ford Original Accessories** will be warranted for whichever provides you the greatest benefit: 24 months/unlimited mileage, or the remainder of your Bumper-to-Bumper 3-year/36,000-mile New Vehicle Limited Warranty. Ford Licensed Accessories (FLA) are warranted by the accessory manufacturer's warranty. FLA are designed and developed by the accessory manufacturer and have not been designed or tested to Ford Motor Company engineering requirements. Contact your Ford Dealer for details and/or a copy of all limited warranties.

Comparisons based on competitive models (class is Large Utilities), publicly available information and Ford certification data at time of release. Vehicles may be shown with optional equipment. Features may be offered only in combination with other options or subject to additional ordering requirements/limitations. Dimensions shown may vary due to optional features and/or production variability. Information is provided on an "as is" basis and could include technical, typographical or other errors. Ford makes no warranties, representations, or guarantees of any kind, express or implied, including but not limited to, accuracy, currency, or completeness, the operation of the information, materials, content, availability, and products. Ford reserves the right to change product specifications, pricing and equipment at any time without incurring obligations. Your Ford Dealer is the best source of the most up-to-date information on Ford vehicles.

HD Radio is a proprietary trademark of iBiquity Digital Corp. INVISION is a trademark of VOXX International Corporation. SiriusXM services require a subscription, sold separately by SiriusXM after trial period. Fees and taxes apply. All fees and programming subject to change. Sirius satellite service is available only to those in the 48 contiguous USA, D.C. and PR (with coverage limitations). Our Internet radio service is available throughout our satellite service area and in AK and HI. Some channels not available in all lineups. Sirius, XM and all related marks and logos are trademarks of Sirius XM Radio Inc. Sony is a registered trademark, and Clear Phase and Live Acoustics are trademarks, of the Sony Corporation. The Bluetooth word mark is a trademark of the Bluetooth SIG, Inc. THULE is a registered trademark of Thule Sweden AB.



[Click here to learn more about your Explorer](#)