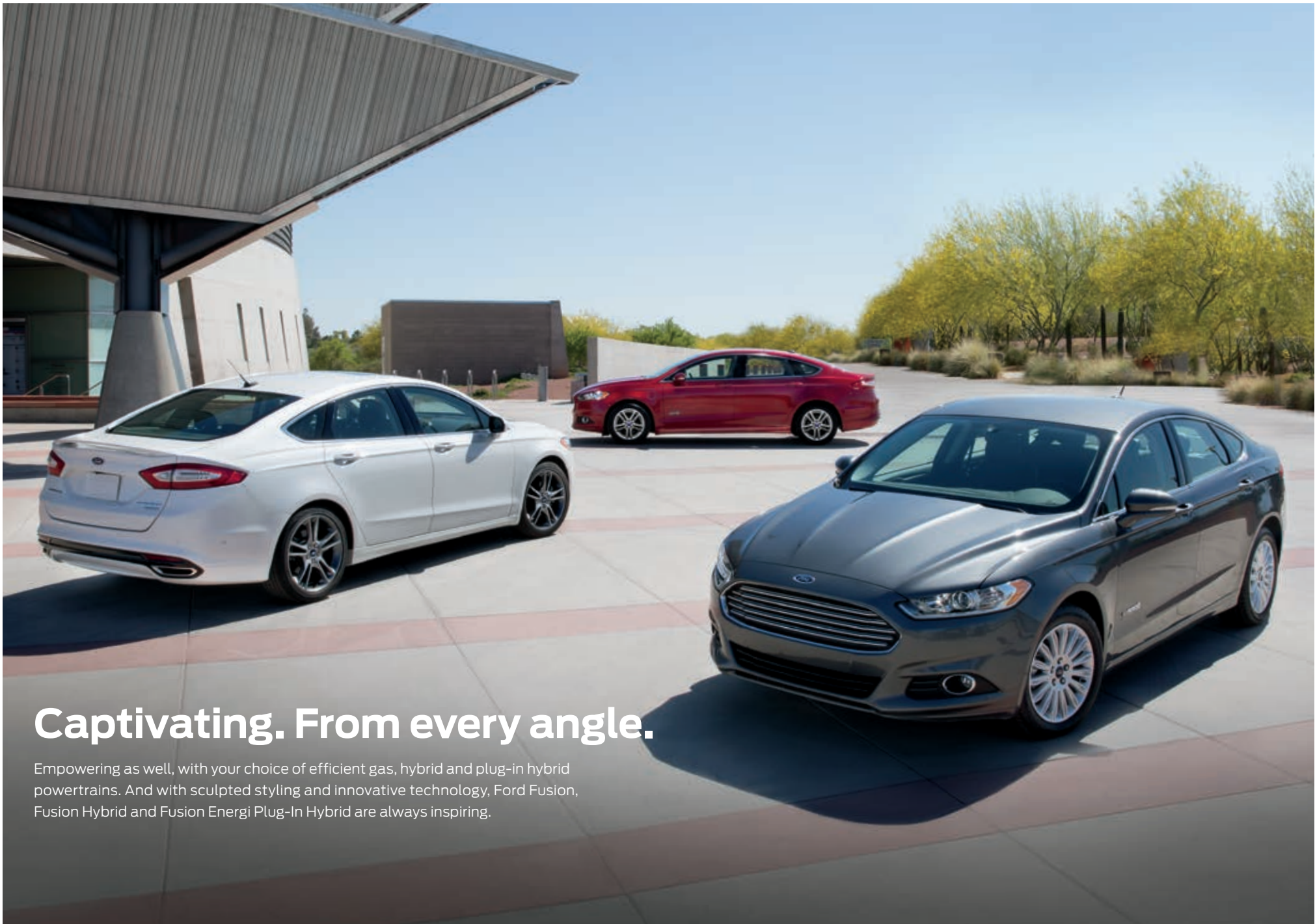


2016 | **FUSION+HYBRID**
FUSION ENERGI



Go Further



Captivating. From every angle.

Empowering as well, with your choice of efficient gas, hybrid and plug-in hybrid powertrains. And with sculpted styling and innovative technology, Ford Fusion, Fusion Hybrid and Fusion Energi Plug-In Hybrid are always inspiring.

*Titanium. White Platinum Metallic Tri-coat.
Fusion Energi Titanium. Ruby Red Metallic Tinted Clearcoat. Hybrid SE. Magnetic. Available equipment.*

2016 **FUSION+HYBRID**
FUSION ENERGI
ford.com



Motivating. With powerful gas choices.

Equip your gasoline-powered Fusion model with a standard 2.5L iVCT engine or one of 2 EcoBoost® turbocharged, direct-injection powerplants.¹

With robust low-end torque and virtually no turbo lag, EcoBoost technology squeezes maximum power from each drop of fuel. Along with impressive efficiency. Get 181 hp from the 1.5L EcoBoost¹ with 6-speed SelectShift® automatic transmission and Auto Start-Stop Technology,¹ plus an EPA-estimated rating of 37 hwy mpg.²

For performance-minded drivers, a 240-hp³ 2.0L EcoBoost¹ teams with a SelectShift automatic.¹

With Fusion, the choice is always yours.



2.5L iVCT I-4

6-speed SelectShift automatic
175 horsepower

1.5L EcoBoost

6-speed SelectShift automatic
with Auto Start-Stop Technology¹
181 horsepower

2.0L EcoBoost

6-speed SelectShift automatic
240 horsepower³

SE. Bronze Fire Metallic Tinted Clearcoat. Available equipment.

¹Available feature. ²EPA-estimated rating: 25 city/37 hwy/29 combined mpg, 1.5L EcoBoost automatic with Auto Start-Stop Technology. Actual mileage will vary. ³Using 93-octane fuel.

2016 **FUSION+HYBRID**
FUSION ENERGY
ford.com





Dramatization. Actual mileage will vary.

Efficient! With state-of-the-art hybrid technology.

Using both electric and gas power, Fusion Hybrid delivers exceptional ride and handling as it seamlessly switches between its electric motor and 2.0L Atkinson-cycle gasoline I-4 engine to help maximize fuel efficiency. In fact, it can operate in electric mode at speeds up to 85 mph, due to a state-of-the-art, lithium-ion battery.

To help you drive more efficiently, vibrant “Efficiency Leaves” grow on the next-generation SmartGauge® with EcoGuide instrument cluster. The higher your driving efficiency, the more lush your green leaves – giving you instant feedback.

Recharging the battery as you drive, the Regenerative Braking System captures over 90% of the brake energy and uses it to help recharge the battery. Even when braking, you’re moving forward in a Fusion Hybrid.



Hybrid SE. Magnetic. Available equipment.

¹EPA-estimated rating: 44 city/41 hwy/42 combined mpg, Hybrid. Actual mileage will vary.

2016 **FUSION+HYBRID**
FUSION ENERGY
ford.com



Flexible. With the option to plug in or not.

With a large-capacity, state-of-the-art, lithium-ion battery and 2.0L Atkinson-cycle gasoline engine, Fusion Energi Plug-In Hybrid gives you the additional choice of plugging in. As you drive, it can decide whether to run only on battery power or to turn on its gas engine as needed.

An EPA-estimated rating of 95 city MPGe,¹ a gas-plus-electric driving range of 550 miles,² and an all-electric driving range of 19 miles.² Fusion Energi may run all-electric and use no gasoline at all on short commutes – even while cruising at highway speeds.

Recharge at home in about 7 hours using its illuminated charge port and the standard 120V convenience cord. Shorten that time to about 2.5 hours using a Ford-recommended AeroVironment™ 240-volt home charging station³ (shown below). This UL-listed, weather-resistant portable charging station is easy to take with you if you decide to relocate. A hard-wired station is also available.

Easily monitor and schedule charging, at home or at one of the growing number of public charging stations near you, with our MyFord® Mobile app⁴ (shown below) and website (myfordmobile.com). Both feature a charging station locator powered by PlugShare.[®]

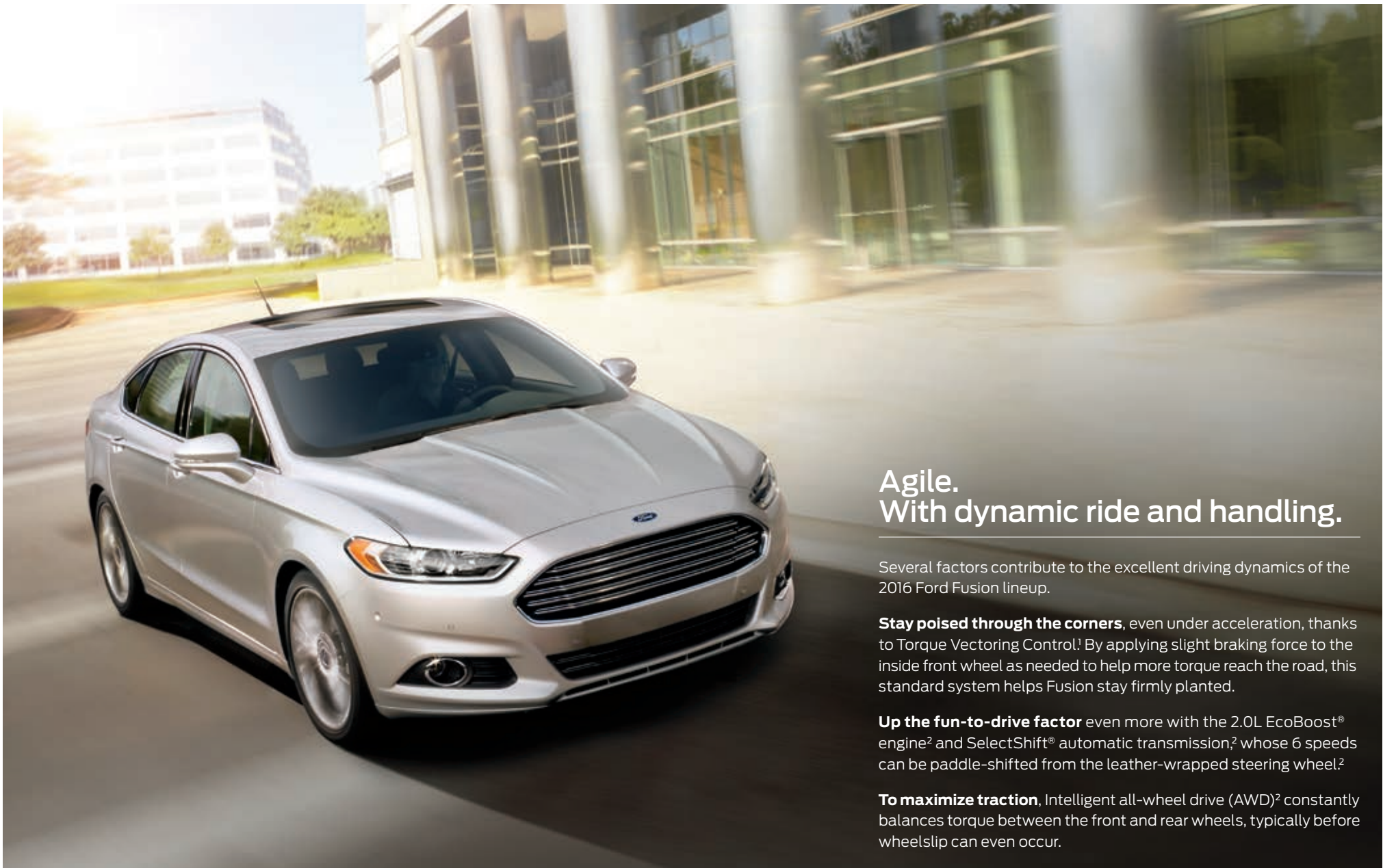


Fusion Energi Titanium. Ruby Red Metallic Tinted Clearcoat. Available equipment.

¹EPA-estimated rating of 95 city/81 hwy/88 combined MPGe. Actual mileage will vary. MPGe is the EPA equivalent measure of gasoline fuel efficiency for electric mode operation. ²EPA-estimated rating of 40 city/36 hwy/38 combined mpg, 14.0-gallon fuel tank; 19 miles electric. Range calculation based on www.fueleconomy.gov. Actual range varies with conditions such as external elements, driving behaviors, vehicle maintenance and lithium-ion battery age. ³Available feature. To begin the process, call 1-888-219-6747 or visit evsolutions.com/ford. Charging stations are available with or without full installation services by AeroVironment. ⁴MyFord Mobile subscription complimentary for 5 years from the vehicle sale date as recorded by the dealer. Subscription fees apply after 5 years. MyFord Mobile requires a compatible 2.5G independent cellular network. Evolving technology and cellular networks may affect future availability and functionality.

2016 **FUSION+HYBRID**
FUSION ENERGI
ford.com





Agile. With dynamic ride and handling.

Several factors contribute to the excellent driving dynamics of the 2016 Ford Fusion lineup.

Stay poised through the corners, even under acceleration, thanks to Torque Vectoring Control!¹ By applying slight braking force to the inside front wheel as needed to help more torque reach the road, this standard system helps Fusion stay firmly planted.

Up the fun-to-drive factor even more with the 2.0L EcoBoost[®] engine² and SelectShift[®] automatic transmission,² whose 6 speeds can be paddle-shifted from the leather-wrapped steering wheel.²

To maximize traction, Intelligent all-wheel drive (AWD)² constantly balances torque between the front and rear wheels, typically before wheelslip can even occur.



TORQUE VECTORING CONTROL

PADDLE



SHIFTERS²

AWD²



TRACTION

Titanium. Ingot Silver. Available equipment.

¹Remember that even advanced technology cannot overcome the laws of physics. It's always possible to lose control of a vehicle due to inappropriate driver input for the conditions. ²Available feature.

2016 **FUSION+HYBRID**
FUSION ENERGY
ford.com





Gratifying. Enjoy its finely crafted comforts.

Relax in supportive, leather-trimmed, 10-way power, heated front seats! Recharge your devices with a convenient 110-volt power outlet!

Enjoy the sound from a well-balanced, 12-speaker Audio System from Sony,^{®1} as well as the peace from acoustic underbody shields and sound-absorption material.

Your sense of responsibility is also satisfied inside Fusion. Nearly 40 recycled 16-oz. plastic bottles go into the EcoCloth seats on select models, while recycled material is used for the injection-molded splash shields and other underbody components.

Set the ambient lighting¹ to your choice of 7 hues to bring it all together.



SE. Dune leather trim. Luxury Package. Available equipment.

¹Available feature.

Personalized. Command it with your voice.

Voice-activated SYNC^{®1} technology helps you keep your eyes on the road and hands on the wheel. SYNC. Say the word.

- **Hands-free calling** lets you make a call with a simple push of a button along with the sound of your voice.
- **Automatic phone book download** transfers the names and numbers in your compatible phone automatically, once paired.
- **Voice-activated music commands** let you say what music you want to hear and listen to it easily with voice-activated search, or say "Bluetooth[®] audio" to stream content from your phone.
- **SYNC AppLink^{™2}** lets you control some of your favorite compatible mobile apps with your voice.
- **911 Assist^{®3}** is a convenient no-charge feature that allows you to connect your compatible cell phone to help call 911, even if you can't.

Upgrade to SYNC with MyFord Touch.^{®1,4}

- **An LCD screen** lets you easily read and control the things you want.
- **Voice-activated navigation⁴** features voice-recognition technology that lets you say commands as conversational as "find a restaurant." The system then helps guide you to your destination with audible turn-by-turn directions.
- **Voice control climate** lets you use your voice to adjust the climate, so you can stay comfortable without having to lift a finger.

| SYNC

*Titanium. Charcoal Black leather trim with perforated inserts.
SYNC with MyFord Touch. Available equipment.*



¹Driving while distracted can result in loss of vehicle control. Only use SYNC/MyFord Touch/other devices, even with voice commands, when it is safe to do so. Some features may be locked out while the vehicle is in gear. Not all features are compatible with all phones. ²Available feature. SYNC AppLink is available on select models and compatible with select smartphone platforms. SYNC AppLink is not compatible with MyFord Touch. Commands may vary by phone and AppLink software. ³The vehicle's electrical system (including the battery), the wireless service provider's signal and a connected mobile phone must all be available and operating for 911 Assist to function properly. These systems may become damaged in a crash. The paired mobile phone must be connected to SYNC, and the 911 Assist feature enabled, in order for 911 to be dialed. When the feature is ON, 911 Assist uses your paired and connected mobile phone to assist occupants to contact emergency services by dialing 911 if your airbag deploys or, on certain vehicles, if the emergency fuel pump shut-off is activated. ⁴Available feature.

2016 **FUSION+HYBRID**
FUSION ENERGY
ford.com





Entertaining. Connect with your world.

SiriusXM® Satellite Radio welcomes you to the World of SiriusXM.¹ Enjoy more than 150 channels including commercial-free music, plus live sports, news and exclusive entertainment, with a 6-month trial subscription to the All Access package included with your new vehicle. You'll hear every channel available, plus you can listen online and on the SiriusXM app.¹

Navigation² with SiriusXM Traffic and Travel Link[®] includes a 5-year complimentary SiriusXM Traffic and Travel Link¹ trial subscription. Global Positioning System (GPS) technology is combined with 3-D mapping and provides voice-guided turn-by-turn directions. With SiriusXM Traffic and Travel Link, you'll get detailed traffic information, plus current and forecasted weather, gas station locations and prices, sports scores and schedules, and movie theater locations with show listings and times.

((SiriusXM))

Titanium. SYNC® with MyFord Touch® Available equipment.



2016 **FUSION+HYBRID**
FUSION ENERGY
ford.com

¹SiriusXM Satellite Radio, SiriusXM Traffic and SiriusXM Travel Link subscriptions are sold separately or as a package by SiriusXM after your trial period, and are continuous until you call SiriusXM at 1-866-635-2349 to cancel. If you decide to continue service after your trial, the subscription plan you choose will automatically renew thereafter and you will be charged according to your chosen payment method at then-current rates. Fees and taxes apply. All fees and programming subject to change. See Customer Agreement for complete terms and more information at www.siriusxm.com. ²Available feature.



Advanced. To help locate your sweet spot.

With its available driver-assist technologies, Fusion can help in traffic, with parallel parking and more.

Maintain your lane with help from our Lane-Keeping System.^{1,2} It can detect lane markings with a forward-facing camera and send vibration pulses to the steering wheel. If needed, it can apply steering torque to prompt you to steer back toward center.

Make parallel parking easier with active park assist.¹ This system not only helps you find a spot, it actually steers the vehicle into place while you control the gear shifter, and brake and accelerator pedals.

Get a heads-up from adaptive cruise control and collision warning with brake support.¹ This system helps maintain your choice of 4 preset gaps from the vehicle in front of you and can alert you to a potential collision. If one is detected, it flashes a warning on the windshield, sounds an alarm, and preps the braking system to provide full responsiveness when you do brake.

Stay alert to traffic detected in blind spots as you drive forward, or traffic nearing either side of the vehicle as you slowly back up, thanks to BLIS[®] (Blind Spot Information System) with cross-traffic alert.¹ It helps warn you using lights embedded in the sideview mirrors.³

¹Available feature. Driver-assist features are supplemental and do not replace the driver's attention, judgment and need to control the vehicle.

²Lane-Keeping System does not control steering. ³BLIS replaces standard integrated blind spot mirrors.



Stable. When it's needed most.

Rest assured that Fusion is engineered to bring stability to your journey. Its achievements include both the government's highest possible safety rating and a Top Safety Pick from the Insurance Institute for Highway Safety (IIHS).

8 standard airbags join inflatable 2nd-row safety belts¹ (in the rear outboard seating positions) inside.

To help ensure proper tire inflation, the standard Tire Pressure Monitoring System (TPMS) alerts you when any tire's pressure is low, giving you time to get assistance if needed.

Helping to keep things stable, particularly in inclement weather, is standard AdvanceTrac[®] electronic stability control.²



SAFETY RATING³

2015 IIHS



TOP SAFETY PICK

INFLATABLE



2ND-ROW SAFETY BELTS¹

Titanium. White Platinum Metallic Tri-coat. Available equipment.

¹Available feature. ²Remember that even advanced technology cannot overcome the laws of physics. It's always possible to lose control of a vehicle due to inappropriate driver input for the conditions.

³Ratings based on Overall and Frontal Crash tests. Government 5-star Safety Ratings are part of the U.S. Department of Transportation's New Car Assessment Program (www.safercar.gov).

2016 **FUSION+HYBRID**
FUSION ENERGY
ford.com



Fusion Specifications



Engines/EPA-Estimated Ratings¹ & Dimensions

2.5L iVCT I-4

175 hp @ 6,000 rpm
175 lb.-ft. of torque @ 4,500 rpm
6-speed SelectShift[®] automatic
22 city/34 hwy/26 combined mpg

1.5L EcoBoost[®] I-4

181 hp @ 6,000 rpm
185 lb.-ft. of torque @ 4,320 rpm
6-speed SelectShift automatic
24 city/36 hwy/28 combined mpg
6-speed SelectShift automatic with Auto Start-Stop Technology
25 city/37 hwy/29 combined mpg

2.0L EcoBoost I-4

240 hp @ 5,550 rpm²
270 lb.-ft. of torque @ 3,000 rpm
6-speed SelectShift automatic
FWD 22 city/33 hwy/26 combined mpg
AWD 22 city/31 hwy/25 combined mpg

2.0L iVCT Atkinson-Cycle I-4 Hybrid with Permanent-Magnet AC-Synchronous Electric Motor

Total combined horsepower: 188
Electronically controlled continuously variable transmission (eCVT)
44 city/41 hwy/42 combined mpg

2.0L iVCT Atkinson-Cycle I-4 Plug-In Hybrid with Permanent-Magnet AC-Synchronous Electric Motor

Total combined horsepower: 195 charge depletion mode
188 charge sustain mode
Electronically controlled continuously variable transmission (eCVT)
40 city/36 hwy/38 combined mpg (gasoline only)
95 city/81 hwy/88 combined MPGe

	Fusion, Hybrid/Fusion Energi
Exterior	
Wheelbase	112.2"
Length	191.8"
Height	58.2"/58.0"
Width – Mirrors folded	75.2"
Width – Including mirrors	83.5"
Interior	Front/Rear
Head room	39.2"/37.8"
Shoulder room	57.8"/56.9"
Hip room	55.0"/54.4"
Leg room	44.3" (max.)/38.3"
Capacities (cu. ft.)	Fusion, Hybrid/Fusion Energi
Passenger volume	102.8
Luggage capacity	16.0, 12.0/8.2
Total interior volume	118.8, 114.8/111.0
Fuel tank (gal.)	
FWD/AWD	16.5/17.5
Hybrid/Fusion Energi	13.5/14.0

Standard Features

Mechanical

4-wheel disc Anti-Lock Brake System (ABS)
Electric parking brake
Electric power-assisted steering
Front and rear stabilizer bars
Front-wheel drive (FWD)
Hill start assist
Suspension – Front: independent MacPherson strut; rear: independent integral link
Torque Vectoring Control

Interior

12-volt powerpoints (3)
Dome light with map lights
Driver and front-passenger sun visors with illuminated vanity mirrors
Ford SYNC[®] voice-activated, in-vehicle connectivity system
Full center console with armrest and storage
Illuminated, lockable glove compartment
Message center with trip computer
Power door locks
Power windows with global open/close and one-touch-up/-down feature

Steering wheel-mounted cruise, audio and 5-way MyFord[®] controls
Tilt/telescoping steering column

Exterior

Automatic halogen projector beam headlamps
Chrome grille
Configurable daytime running lamps
Easy Fuel[®] capless fuel filler
LED taillamps
Rear-window defroster
Solar-tinted glass
Speed-sensitive windshield wipers

Safety & Security

Personal Safety System[™] for driver and front passenger includes dual-stage front airbags³; safety belt pretensioners, safety belt energy-management retractors, safety belt usage sensors, driver's seat position sensor, crash severity sensor, restraint control module and Front-Passenger Sensing System
Driver and front-passenger knee airbags³
Front-seat side airbags³
Side-curtain airbags³
3-point safety belts for all 5 seating positions
AdvanceTrac[®] electronic stability control with brake-actuated traction control
Anti-theft perimeter alarm
Belt-Minder[®] front safety belt reminder
Child-safety rear door locks
Emergency in-trunk release handle
Illuminated Entry System
LATCH – Lower Anchors and Tether Anchors for Children MyKey[®]
Rear view camera
SecuriLock[®] Passive Anti-Theft System
SOS Post-Crash Alert System[™]
Tire Pressure Monitoring System (excludes spare)

¹Dimensions may vary by trim level.

²Actual mileage will vary. ³Using 93-octane fuel. ³Always wear your safety belt and secure children in the rear seat.



SE. Ebony cloth trim with red stitching. SE Appearance Package. Available equipment.

MyFord 4.2" color LCD center stack display.

60/40 split fold-flat rear seat.



16" Painted Aluminum
Standard: S



17" Sparkle Silver-Painted
Aluminum
Standard: SE



18" Ebony Black Aluminum
Optional: SE



18" Premium Luster Nickel-
Painted Aluminum
Optional: SE



18" 5-Spoke Premium
Black-Painted Aluminum
Optional; requires
SE Appearance Package



18" 5-Spoke Premium
Painted Aluminum
Included:
S & SE Appearance Packages



18" 5-Spoke Machined
and Painted Aluminum
Included: Terracotta Package

S

Equipment Group 100A

Includes all standard features, plus:

Mechanical

2.5L iVCT I-4 engine
6-speed SelectShift® automatic transmission with thumb switch operation
Compact spare

Seating

6-way manual driver's seat
4-way manual front-passenger seat
4-way adjustable front head restraints
60/40 split fold-flat spring-assisted rear seat
Cloth seating

Interior

AM/FM stereo/single-CD player with MP3 capability and 4 speakers
Cruise control
Day/night rearview mirror
Front carpeted floor mats
Single-zone manual air conditioning
SYNC® with MyFord® voice-activated, in-vehicle connectivity system with 4.2" color LCD screens in instrument cluster and center stack, SYNC AppLink™ and media hub with USB port

Exterior

16" painted aluminum wheels with 215/60R16 all-season tires
Black rocker moldings
Body-color door handles
Body-color, power sideview mirrors with integrated blind spot mirrors
Single exhaust with bright tip

Available Equipment Group

Equipment Group 101A – S Appearance Package includes 18" 5-spoke premium painted aluminum wheels with 235/45R18 all-season tires, rear decklid spoiler, fog lamps, and body-color rocker moldings

Available Options

All-weather floor mats
Inflatable rear safety belts in outboard seating positions
Paint Protection Film by 3M covers the edges of hood, front fascia, lower rocker panels, door edges, and rear fascia edge
Remote Start System
Trunk cargo net

SE

Equipment Group 200A

Includes select S features, plus:

Seating

10-way power driver's seat including power lumbar
6-way power front-passenger seat with fore/aft/up/down adjustment and power recline
Rear-seat fold-down center armrest with 2 cupholders

Interior

AM/FM stereo/single-CD player with MP3 capability and 6 speakers
Compass
Outside temperature display
Rear carpeted floor mats
Rear climate ducts
SiriusXM® Satellite Radio with 6-month trial subscription

Exterior

17" Sparkle Silver-painted aluminum wheels with 235/50R17 all-season tires
Body-color, power, heated sideview mirrors with security approach lamps and integrated turn signal indicators and blind spot mirrors
Body-color rocker moldings
SecuriCode™ invisible keypad

Available Equipment Groups

Equipment Group 201A – SE Appearance Package includes 18" 5-spoke premium painted aluminum wheels, rear decklid spoiler, fog lamps, leather-wrapped steering wheel, and Ebony EcoCloth interior with contrasting red stitching on center console and seats (n/a with Auto Start-Stop Technology)

Equipment Group 202A – Luxury Package includes 1.5L EcoBoost® I-4 engine; driver's seat memory feature; heated front seats; leather-trimmed seats, steering wheel and shift knob; auto-dimming rearview mirror; fog lamps; chrome moldings around door windows; and power, heated sideview mirrors with memory, security approach lamps, auto-dimming driver's side, and integrated turn signal indicators and blind spot mirrors

Available Options & Packages

1.5L EcoBoost I-4 engine with 6-speed SelectShift automatic transmission
1.5L EcoBoost I-4 engine with 6-speed SelectShift automatic transmission and Auto Start-Stop Technology (requires 17" wheels; n/a with 201A or Terracotta Package)

2.0L EcoBoost I-4 engine and 6-speed SelectShift automatic transmission with paddle shifters; includes dual integrated bright exhaust outlets (requires 201A or 202A and 18" wheels)

18" 5-spoke premium black-painted aluminum wheels (requires 201A)

18" Ebony Black aluminum wheels (requires 202A; n/a with Terracotta Package)

18" premium Luster Nickel-painted aluminum wheels (requires 202A; n/a with Terracotta Package)

18" summer-only tires¹ (requires 201A with 1.5L engine or 2.0L engine; n/a with Terracotta Package)

Active park assist with Forward Sensing System (requires 202A and SE Technology Package)

Adaptive cruise control and collision warning with brake support (requires 202A, 2.0L engine, 18" wheels and SE Technology Package)

All-weather floor mats

Driver Assist Package includes BLIS® (Blind Spot Information System) with cross-traffic alert, Lane-Keeping System, auto high beams, rain-sensing windshield wipers, and 110-volt power outlet (requires 202A and SE Technology Package)

Heated steering wheel (requires 202A and SE Technology Package)

Inflatable rear safety belts in outboard seating positions

Intelligent Access with push-button start and Remote Start System (requires 202A and SE Technology Package)

Intelligent all-wheel drive (AWD) (requires 201A or 202A, 2.0L EcoBoost engine and 18" wheels)

Paint Protection Film by 3M covers the edges of hood, front fascia, lower rocker panels, door edges, and rear fascia edge

Power moonroof with universal garage door opener

Premium carpeted front and rear floor mats, plus trunk mat (n/a with Terracotta Package)

Remote Start System

Reverse Sensing System

SE Cold Weather Package includes all-weather floor mats, heated cloth front seats and Remote Start System (requires 200A or 201A)

SE Technology Package includes SYNC with MyFord Touch® voice-activated, in-vehicle connectivity system with SYNC Services²; 2 configurable 4.2" color LCD screens in instrument cluster, 8" color LCD touch screen in center stack, and media hub with USB port and SD card reader; 10 speakers; Reverse Sensing System; and dual-zone electronic automatic temperature control

Terracotta Package includes Terracotta premium leather-trimmed seats and vinyl door-trim inserts, premium carpeted front and rear floor mats, and 18" 5-spoke machined and painted aluminum wheels (requires 202A; n/a with Auto Start-Stop Technology)

Trunk cargo net

Voice-activated Navigation System with integrated SiriusXM Traffic and Travel Link® with 5-year subscription (requires SE Technology Package)

¹Ford does not recommend using summer tires when temperatures drop to approximately 40°F or below (depending on tire wear and environmental conditions) or in snow/ice conditions. If the vehicle must be driven in these conditions, Ford recommends using all-season or winter tires. ²SYNC Services varies by trim level and model year and may require a subscription. Traffic alerts and turn-by-turn directions available in select markets. Message and data rates may apply. Ford Motor Company reserves the right to change or discontinue this product service at any time without prior notification or incurring any future obligation.

Titanium

Equipment Group 300A

Includes select SE features, plus:

Mechanical

2.0L EcoBoost® I-4 engine

6-speed SelectShift® automatic transmission with steering wheel-mounted paddle shifters

Seating

Leather-trimmed Sport seats with 10-way power, heated front seats and driver's side memory with 3 settings

Interior

Aluminum brake and accelerator pedal covers

Aluminum front door-sill plates

Ambient lighting

Audio System from Sony® with AM/FM stereo/single-CD player with MP3 capability, 12 speakers in 10 locations and HD Radio™ Technology

Auto-dimming rearview mirror

Dual-zone electronic automatic temperature control

Intelligent Access with push-button start and Remote Start System

Leather-wrapped steering wheel and shift knob

SYNC® with MyFord Touch® voice-activated, in-vehicle connectivity system with SYNC Services¹; 2 configurable 4.2" color LCD screens in instrument cluster, 8" color LCD touch screen in center stack, and media hub with USB port and SD card reader

Exterior

18" polished face aluminum wheels with Flash Gray-painted pockets and 235/45R18 all-season tires

Body-color door handles with chrome inserts

Body-color, power, heated sideview mirrors with memory, security approach lamps, auto-dimming driver's side, and integrated turn signal indicators and blind spot mirrors

Dual integrated bright exhaust outlets

Fog lamps

Rear decklid spoiler

Reverse Sensing System

Available Options & Packages

18" summer-only tires² (requires AWD; n/a with Terracotta Package)

19" H-spoke dark stainless-painted aluminum wheels and 235/40R19 all-season tires (n/a with Terracotta Package)

Active park assist with Forward Sensing System

Adaptive cruise control and collision warning with brake support

All-weather floor mats

Cooled front seats

Driver Assist Package includes BLIS® (Blind Spot Information System) with cross-traffic alert, Lane-Keeping System, auto high beams, rain-sensing windshield wipers, and 110-volt power outlet

Heated steering wheel

Inflatable rear safety belts in outboard seating positions

Intelligent all-wheel drive (AWD)

Paint Protection Film by 3M covers the edges of hood, front fascia, lower rocker panels, door edges, and rear fascia edge

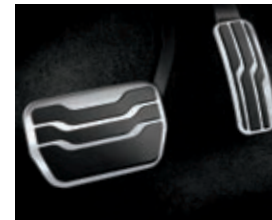
Power moonroof with universal garage door opener

Premium carpeted front and rear floor mats, plus trunk mat (n/a with Terracotta Package)

Terracotta Package includes Terracotta premium leather-trimmed seats and vinyl door-trim inserts, premium carpeted front and rear floor mats, and 18" 5-spoke machined and painted aluminum wheels

Trunk cargo net

Voice-activated Navigation System with integrated SiriusXM® Traffic and Travel Link® with 5-year subscription



Terracotta premium leather trim with perforated inserts. Terracotta Package. Available equipment.

Intelligent Access with push-button start.

Aluminum brake and accelerator pedal covers.

Audio System from Sony with HD Radio Technology and iTunes® tagging.

Steering wheel-mounted paddle shifters.



18" Polished Face Aluminum with Flash Gray-Painted Pockets
Standard



18" 5-Spoke Machined and Painted Aluminum
Included: Terracotta Package



19" H-Spoke Dark Stainless-Painted Aluminum
Optional

¹SYNC Services varies by trim level and model year and may require a subscription. Traffic alerts and turn-by-turn directions available in select markets. Message and data rates may apply. Ford Motor Company reserves the right to change or discontinue this product service at any time without prior notification or incurring any future obligation. ²Ford does not recommend using summer tires when temperatures drop to approximately 40°F or below (depending on tire wear and environmental conditions) or in snow/ice conditions. If the vehicle must be driven in these conditions, Ford recommends using all-season or winter tires.

Fusion Hybrid



Next-generation SmartGauge with EcoGuide instrument cluster. Available equipment.

110-volt power outlet¹

Climate control screen on SYNC with MyFord Touch¹

"Brake Coach" on SmartGauge with EcoGuide instrument cluster.



17" 15-Spoke Sparkle Silver-painted Aluminum
Standard: Hybrid S & Hybrid SE



17" 10-Spoke Painted Aluminum
Standard: Hybrid Titanium
Included: Appearance Package

Hybrid S

Equipment Group 400A

Includes select S features, plus:

Mechanical

2.0L iVCT Atkinson-cycle I-4 HEV engine with permanent-magnet AC-synchronous electric motor
Electronically controlled continuously variable transmission (eCVT)

Lithium-Ion Battery Pack System – 1.4-kWh capacity

Regenerative Braking System

Tire mobility kit in lieu of spare tire

Seating

Cloth seating

Interior

Active noise cancellation

AM/FM stereo/single-CD player with MP3 capability and 6 speakers

Hybrid SE

Equipment Group 500A

Includes select Hybrid S features, plus:

Seating

10-way power driver's seat including power lumbar

6-way power front-passenger seat with fore/aft/up/down adjustment and power recline

Rear-seat fold-down center armrest with 2 cupholders

Unique EcoCloth seats with REPREVE[®] fabric

Interior

Compass

Outside temperature display

Rear carpeted floor mats

Rear climate ducts

SiriusXM[®] Satellite Radio with 6-month trial subscription

Exterior

Body-color, power, heated sideview mirrors with security approach lamps and integrated turn signal indicators and blind spot mirrors

Body-color rocker moldings

SecuriCode[™] invisible keypad

Available Equipment Groups

Equipment Group 501A – Appearance Package

Includes 17" 10-spoke painted aluminum wheels, rear decklid spoiler, fog lamps, leather-wrapped steering wheel, and Ebony EcoCloth interior with contrasting red stitching on center console and seats

Equipment Group 502A – Luxury Package includes driver's seat memory feature; heated front seats; leather-trimmed seats, steering wheel and shift knob; auto-dimming rearview mirror; fog lamps; chrome moldings around door windows; and power, heated sideview mirrors with memory, security approach lamps, auto-dimming driver's side, and integrated turn signal indicators and blind spot mirrors

Dual-zone electronic automatic temperature control

Front carpeted floor mats

SmartGauge[®] with EcoGuide

Exterior

17" 15-spoke Sparkle Silver-painted aluminum wheels with P225/50R17 all-season tires

Single bright exhaust tip

Available Options

All-weather floor mats

Inflatable rear safety belts in outboard seating positions

Paint Protection Film by 3M covers the edges of hood, front fascia, lower rocker panels, door edges, and rear fascia edge

Remote Start System

Trunk cargo net

Available Options & Packages

Active park assist with Forward Sensing System (requires 502A and SE Technology Package)

Adaptive cruise control and collision warning with brake support (requires SE Technology Package; n/a on 500A)

All-weather floor mats

Driver Assist Package includes BLIS[®] (Blind Spot Information System) with cross-traffic alert, Lane-Keeping System, auto high beams, 110-volt power outlet and rain-sensing windshield wipers (requires 502A and SE Technology Package)

Heated steering wheel (requires 502A and SE Technology Package)

Inflatable rear safety belts in outboard seating positions

Intelligent Access with push-button start and Remote Start System (requires 502A and SE Technology Package)

Paint Protection Film by 3M covers the edges of hood, front fascia, lower rocker panels, door edges, and rear fascia edge

Power moonroof with universal garage door opener

Premium carpeted front and rear floor mats, plus trunk mat (n/a with Terracotta Package)

Remote Start System

Reverse Sensing System

SE Cold Weather Package includes all-weather floor mats, heated cloth front seats and Remote Start System (n/a on 502A)

SE Technology Package includes SYNC[®] with MyFord Touch[®] voice-activated, in-vehicle connectivity system with SYNC Services²; 2 configurable 4.2" color LCD screens in instrument cluster, 8" color LCD touch screen in center stack, and media hub with USB port and SD card reader; 10 speakers; Reverse Sensing System; and 110-volt power outlet

Terracotta Package includes Terracotta premium leather-trimmed seats and vinyl door-trim inserts, and premium carpeted front and rear floor mats (requires 502A)

Trunk cargo net

Voice-activated Navigation System with integrated SiriusXM Traffic and Travel Link[®] with 5-year subscription (requires SE Technology Package)

Hybrid Titanium

Equipment Group 600A

Includes select Hybrid SE features, plus:

Seating

Leather-trimmed Sport seats with 10-way power, heated front seats and driver's side memory with 3 settings

Interior

110-volt power outlet

Aluminum brake and accelerator pedal covers

Aluminum front door-sill plates

Ambient lighting

Audio System from Sony[®] with AM/FM stereo/single-CD player with MP3 capability, 12 speakers in 10 locations and HD Radio[™] Technology

Auto-dimming rearview mirror

Intelligent Access with push-button start and Remote Start System

Leather-wrapped steering wheel and shift knob

SYNC with MyFord Touch voice-activated, in-vehicle connectivity system with SYNC Services²; 2 configurable 4.2" color LCD screens in instrument cluster, 8" color LCD touch screen in center stack, and media hub with USB port and SD card reader

Exterior

17" 10-spoke painted aluminum wheels

Body-color door handles with chrome inserts

Body-color, power, heated sideview mirrors with memory, security approach lamps, auto-dimming driver's side, and integrated turn signal indicators and blind spot mirrors

Fog lamps

Rear decklid spoiler

Reverse Sensing System

Available Options & Packages

Active park assist with Forward Sensing System

Adaptive cruise control and collision warning with brake support

All-weather floor mats

Cooled front seats

Driver Assist Package includes BLIS (Blind Spot Information System) with cross-traffic alert, Lane-Keeping System, auto high beams, and rain-sensing windshield wipers

Heated steering wheel

Inflatable rear safety belts in outboard seating positions

Paint Protection Film by 3M covers the edges of hood, front fascia, lower rocker panels, door edges, and rear fascia edge

Power moonroof with universal garage door opener

Premium carpeted front and rear floor mats, plus trunk mat (n/a with Terracotta Package)

Terracotta Package

Trunk cargo net

Voice-activated Navigation System with integrated SiriusXM Traffic and Travel Link with 5-year subscription

¹Available feature. ²SYNC Services varies by trim level and model year and may require a subscription. Traffic alerts and turn-by-turn directions available in select markets. Message and data rates may apply. Ford Motor Company reserves the right to change or discontinue this product service at any time without prior notification or incurring any future obligation.

Fusion Energi SE

Equipment Group 700A
Includes select Hybrid SE features, plus:

Mechanical

2.0L iVCT Atkinson-cycle I-4 PHEV engine with permanent-magnet AC-synchronous electric motor
120-volt convenience charge cord
EV Mode button with EV Now, EV Later and EV Auto
Large-capacity Lithium-Ion Battery Pack System – 7.6-kWh capacity
Tire mobility kit (in lieu of spare tire)

Seating

6-way power front-passenger seat with fore/aft/up/down adjustment and power recline
Leather-trimmed seats with heated front seats and driver's side memory with 3 settings

Interior

10 speakers
110-volt power outlet
Leather-wrapped steering wheel and shift knob
MyFord® Mobile app with 5-year service agreement
SYNC® with MyFord Touch® voice-activated, in-vehicle connectivity system with SYNC Services¹; 2 configurable 4.2" color LCD screens in instrument cluster, 8" color LCD touch screen in center stack, and media hub with USB port and SD card reader

Exterior

17" 15-spoke Sparkle Silver-painted aluminum wheels with P225/50VR17 all-season tires
Body-color, power, heated sideview mirrors with memory, security approach lamps, auto-dimming driver's side, and integrated turn signal indicators and blind spot mirrors
External charge port with illuminated state-of-charge indicator
Fog lamps
Reverse Sensing System

Available Options & Package

Active park assist with Forward Sensing System
Adaptive cruise control and collision warning with brake support

All-weather floor mats
Charge cord bag by THULE®²
Charge door decal

Driver Assist Package includes BLIS® (Blind Spot Information System) with cross-traffic alert, Lane-Keeping System, auto high beams, and rain-sensing windshield wipers
Heated steering wheel
Inflatable rear safety belts in outboard seating positions

Intelligent Access with push-button start and Remote Start System

Paint Protection Film by 3M covers the edges of hood, front fascia, lower rocker panels, door edges, and rear fascia edge
Power moonroof with universal garage door opener
Premium carpeted front and rear floor mats
Remote Start System
Trunk cargo net
Voice-activated Navigation System with integrated SiriusXM® Traffic and Travel Link® with 5-year subscription

Fusion Energi Titanium

Equipment Group 800A
Includes select Fusion Energi SE features, plus:

Seating

10-way power front-passenger seat

Interior

Aluminum brake and accelerator pedal covers
Aluminum front door-sill plates
Ambient lighting
Audio System from Sony® with AM/FM stereo/single-CD player with MP3 capability, 12 speakers in 10 locations and HD Radio™ Technology
Intelligent Access with push-button start and Remote Start System

Exterior

17" 10-spoke painted aluminum wheels
Body-color door handles with chrome inserts
Rear decklid spoiler

Available Options & Package

Active park assist with Forward Sensing System
Adaptive cruise control and collision warning with brake support

All-weather floor mats
Charge cord bag by THULE²

Charge door decal

Cooled front seats

Driver Assist Package includes BLIS (Blind Spot Information System) with cross-traffic alert, Lane-Keeping System, auto high beams, and rain-sensing windshield wipers

Heated steering wheel

Inflatable rear safety belts in outboard seating positions

Paint Protection Film by 3M covers the edges of hood, front fascia, lower rocker panels, door edges, and rear fascia edge

Power moonroof with universal garage door opener
Premium carpeted front and rear floor mats
Trunk cargo net

Voice-activated Navigation System with integrated SiriusXM Traffic and Travel Link with 5-year subscription

Fusion Energi Plug-In Hybrid



Titanium. Charcoal Black leather trim with perforated inserts. Available equipment.

Illuminated charge port.

Energy flow screen on SYNC with MyFord Touch.



17" 15-Spoke Sparkle Silver-Painted Aluminum
Standard: Fusion Energi SE



17" 10-Spoke Painted Aluminum
Standard: Fusion Energi Titanium



Drive green for life.™

A rebate may be in your bright future. Ford customers who own a Fusion Hybrid or a Fusion Energi Plug-In Hybrid may be eligible for a \$750 rebate on a SunPower residential solar system that generates clean, solar energy for the home and for electric vehicle charging. Owners of C-MAX Hybrid, C-MAX Energi Plug-In Hybrid and Focus Electric may also be eligible. As Drive Green for Life's newest partner, the Sierra Club will receive a \$500 donation for each SunPower rooftop solar system installed through the program. For more information, contact SunPower Corporation at sunpower.com/drivegreen.

¹SYNC Services varies by trim level and model year and may require a subscription. Traffic alerts and turn-by-turn directions available in select markets. Message and data rates may apply. Ford Motor Company reserves the right to change or discontinue this product service at any time without prior notification or incurring any future obligation. ²Ford Licensed Accessory.

Exteriors



White Platinum Metallic Tri-coat



Oxford White



Ingot Silver*



Ruby Red Metallic Tinted Clearcoat



Bronze Fire Metallic Tinted Clearcoat



Deep Impact Blue*



Tectonic*



Magnetic*



Guard*



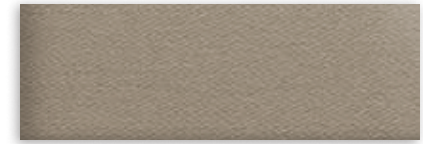
Shadow Black

*Metallic.

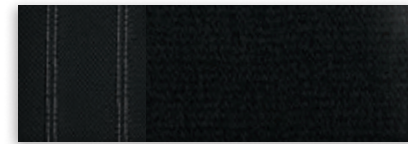
Interiors



1 Medium Earth Gray Cloth



2 Dune Cloth



3 Ebony Cloth



4 Dune Leather



5 Charcoal Black Leather



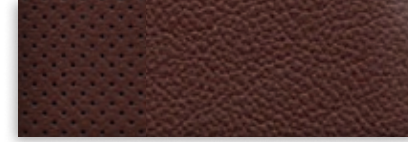
6 Ebony Cloth with Red Stitching



7 Charcoal Black Leather with Perforated Inserts



8 Medium Soft Ceramic Leather with Perforated Inserts



9 Terracotta Premium Leather with Perforated Inserts

Exteriors	Interiors																							
	S	SE				Titanium	Hybrid S	Hybrid SE			Hybrid Titanium	Fusion Energi SE	Fusion Energi Titanium											
White Platinum Metallic Tri-coat ¹		2	3	4	5	6	9	7	8	9	1	2	3	4	5	6	9	7	8	9	4	5	7	8
Oxford White	1	2	3	4	5	6	9	7	8	9	1	2	3	4	5	6	9	7	8	9	4	5	7	8
Ingot Silver	1	2	3	4	5	6	9	7	8	9	1	3	4	5	6	9	7	8	9	4	5	7	8	
Ruby Red Metallic Tinted Clearcoat ¹	1	2	3	4	5	6	7	8	1	2	3	4	5	6	7	8	4	5	7	8	4	5	7	8
Bronze Fire Metallic Tinted Clearcoat ¹	1	2	3	4	5	6	9	7	8	9	1	2	3	4	5	6	9	7	8	9	4	5	7	8
Deep Impact Blue	1	2	3	4	5	6	7	8	1	2	3	4	5	6	7	8	4	5	7	8	4	5	7	8
Tectonic	1	2	3	4	5	6	9	7	8	9	1	2	3	4	5	6	9	7	8	9	4	5	7	8
Magnetic	1	2	3	4	5	6	9	7	8	9	1	2	3	4	5	6	9	7	8	9	4	5	7	8
Guard	1	2	3	4	5	6	7	8	1	2	3	4	5	6	7	8	4	5	7	8	4	5	7	8
Shadow Black	1	2	3	4	5	6	9	7	8	9	1	2	3	4	5	6	9	7	8	9	4	5	7	8

4, 5 Luxury Package on SE and Hybrid SE 6 Appearance Package on SE and Hybrid SE 9 Terracotta Package on SE, Titanium, Hybrid SE and Hybrid Titanium

¹Additional charge.

Colors are representative only. See your dealer for actual paint/trim options.



SE in Ruby Red Metallic Tinted Clearcoat accessorized with 18" Sparkle Nickel-painted aluminum wheels, molded splash guards, smoked side window deflectors and rear decklid spoiler

Illuminated door-sill plates

Roof rack and roof-mounted bike carrier by THULE®¹

All-weather floor mats

Remote Access

Exterior

- Charge door decal²
- Flat splash guards
- Full vehicle cover¹
- Hood protector¹
- Racks and carriers¹
- Rear bumper protector
- Wheel lock kit

Interior

- Ash cup/coin holders
- Auto-dimming rearview mirror
- Cargo organizers and protectors
- Charge cord bag^{1,2}
- Door-sill plates
- In-vehicle safe¹
- Interior light kit
- Premium carpeted floor mats
- Tablet cradle¹

Electronics

- Keyless entry keypad
- Remote start systems
- Reverse bumper-mounted warning sensor system¹
- Vehicle Security System
- Wireless charging¹



Go Further

ford.com/fusion

Follow Ford:



New Vehicle Limited Warranty. We want your Ford Fusion ownership experience to be the best it can be. Under this warranty, your new vehicle comes with 3-year/36,000-mile bumper-to-bumper coverage, 5-year/60,000-mile Powertrain Warranty coverage, 5-year/60,000-mile safety restraint coverage, and 5-year/unlimited-mile corrosion (perforation) coverage – all with no deductible. Fusion unique electric components are covered during the Hybrid/Electric Unique Component Coverage, which lasts for 8 years or 100,000 miles, whichever occurs first. Please ask your Ford Dealer for a copy of this limited warranty.

Roadside Assistance. Covers your vehicle for 5 years or 60,000 miles, so you have the security of knowing that help may be only a phone call away should you run out of fuel, lock yourself out of the vehicle or need towing. Your Ford Dealer can provide complete details on all of these advantages.

Ford Credit. Get the ride you want. Whether you plan to lease or finance, you'll find the choices that are right for you at Ford Credit. Ask your Ford Dealer for details or check us out at fordcredit.com.

Ford Extended Service Plan. For a purchase or lease, the Ford Extended Service Plan (ESP) gives you peace-of-mind protection designed to cover key vehicle components and protect you from the cost of unexpected repairs. Ask your dealer for a Ford ESP, the only service contract backed exclusively by Ford and honored at all Ford Lincoln dealerships.

Insurance Services. Get Ford Motor Company quality in your auto insurance. Our program offers industry-leading benefits and competitive rates. Call 1-877-367-3847, or visit us at fordvip.com for a no-obligation quote. Insurance offered by American Road Services Company (in CA, American Road Insurance Agency), a licensed agency and subsidiary of Ford Motor Company.

Ford Original Accessories will be warranted for whichever provides you the greatest benefit: 24 months/unlimited mileage, or the remainder of your Bumper-to-Bumper 3-year/36,000-mile New Vehicle Limited Warranty. Ford Licensed Accessories (FLA) are warranted by the accessory manufacturer's warranty. FLA are designed and developed by the accessory manufacturer and have not been designed or tested to Ford Motor Company engineering requirements. Contact your Ford Dealer for details and/or a copy of all limited warranties.

Comparisons based on competitive models (Fusion class is Midsize Sedans; Fusion Hybrid class is Midsize Hybrid Sedans; Fusion Energi class is Midsize Plug-In Hybrid Sedans), publicly available information and Ford certification data at time of release. Vehicles may be shown with optional equipment. Features may be offered only in combination with other options or subject to additional ordering requirements/limitations. Dimensions shown may vary due to optional features and/or production variability. Information is provided on an "as is" basis and could include technical, typographical or other errors. Ford makes no warranties, representations, or guarantees of any kind, express or implied, including but not limited to, accuracy, currency, or completeness, the operation of the information, materials, content, availability, and products. Ford reserves the right to change product specifications, pricing and equipment at any time without incurring obligations. Your Ford Dealer is the best source of the most up-to-date information on Ford vehicles.

HD Radio is a proprietary trademark of iBiquity Digital Corp. iTunes is a trademark of Apple Inc., registered in the U.S. and other countries. REPREVE is a registered trademark of Unifi, Inc. SiriusXM services require a subscription, sold separately by SiriusXM after trial period. Fees and taxes apply. All fees and programming subject to change. Sirius satellite service is available only to those in the 48 contiguous USA, D.C. and PR (with coverage limitations). Our Internet radio service is available throughout our satellite service area and in AK and HI. Some channels not available in all lineups. Sirius, XM and all related marks and logos are trademarks of Sirius XM Radio Inc. Sony is a registered trademark of the Sony Corporation. The Bluetooth word mark is a trademark of the Bluetooth SIG, Inc. THULE is a registered trademark of Thule Sweden AB.



Click here to learn more
about your Fusion