

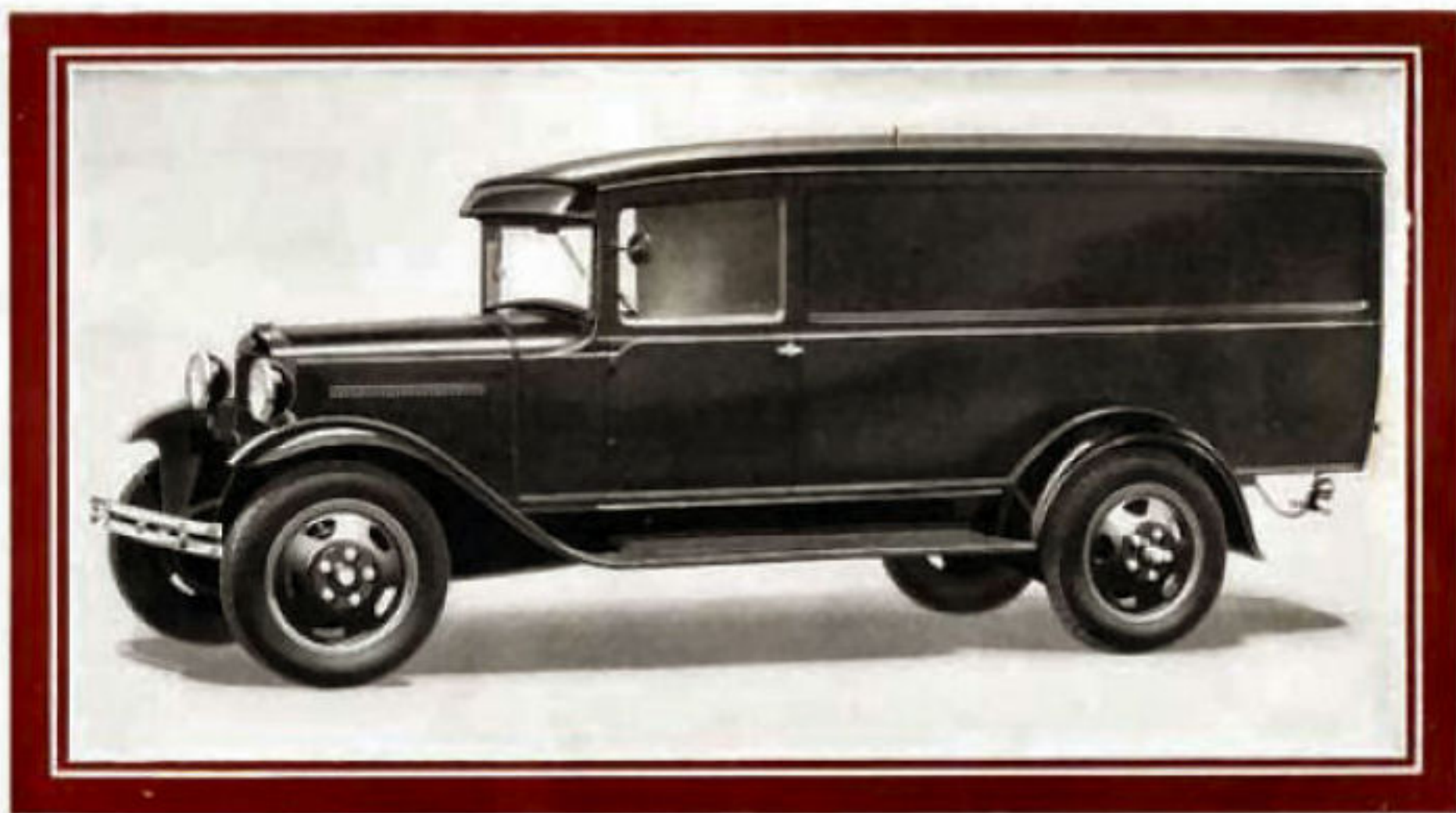
The New
FORD TRUCKS

and

Light Commercial
Cars

FORD commercial units, available in several sizes and many types, cover an exceedingly broad field. Two 1½-ton truck chassis wheelbases are available, in addition to the Model A chassis, which is adaptable to many types of light commercial bodies. The range of standard body types is suitable for a large number of business purposes. In addition to those illustrated in this booklet, there are five dump-bodies available for the 131½" wheelbase, 1½-ton truck chassis. In offering this variety of commercial units to the public, the Ford Motor Company is making available to a large and growing number of businesses the excellent performance, rugged strength, and economical operation which are features of all Ford products. Each unit, in the service for which it is designed, will be found to be a value far in excess of its price.

**Panel
Body—
131½"
Wheelbase
Chassis**



THE Panel Body is ideal for handling goods requiring full protection in all kinds of weather. The exterior is made of steel, and the entire body is of sturdy construction, and will give long service. There are wide, double doors at the rear. Each is provided with a small window. Wide doors also open to the fully enclosed driver's compartment. Two folding seats give the driver easy access to the load from the front of the body.

**Body dimensions: 100'
in length by 46" in width
by 54' high.**



*Stake
Body—
157'
Wheelbase
Chassis*

The body is 11' long and 6' 3" wide. Stake sides extend 42" above the floor.

THIS body type is adapted especially to the hauling of light but bulky loads. It consists of the standard 157' wheelbase platform body and a set of stake racks. The racks are in nine sections—one at the front, three on each side, and two at the rear. This makes them easily removable. The center rack on each side is hinged and can be swung either forward or backward by removing one of the hinge pins and lifting the stakes clear of their sockets. The all-steel enclosed cab is low, yet roomy. If desired this truck may be purchased with the open type cab illustrated and described on the opposite page.

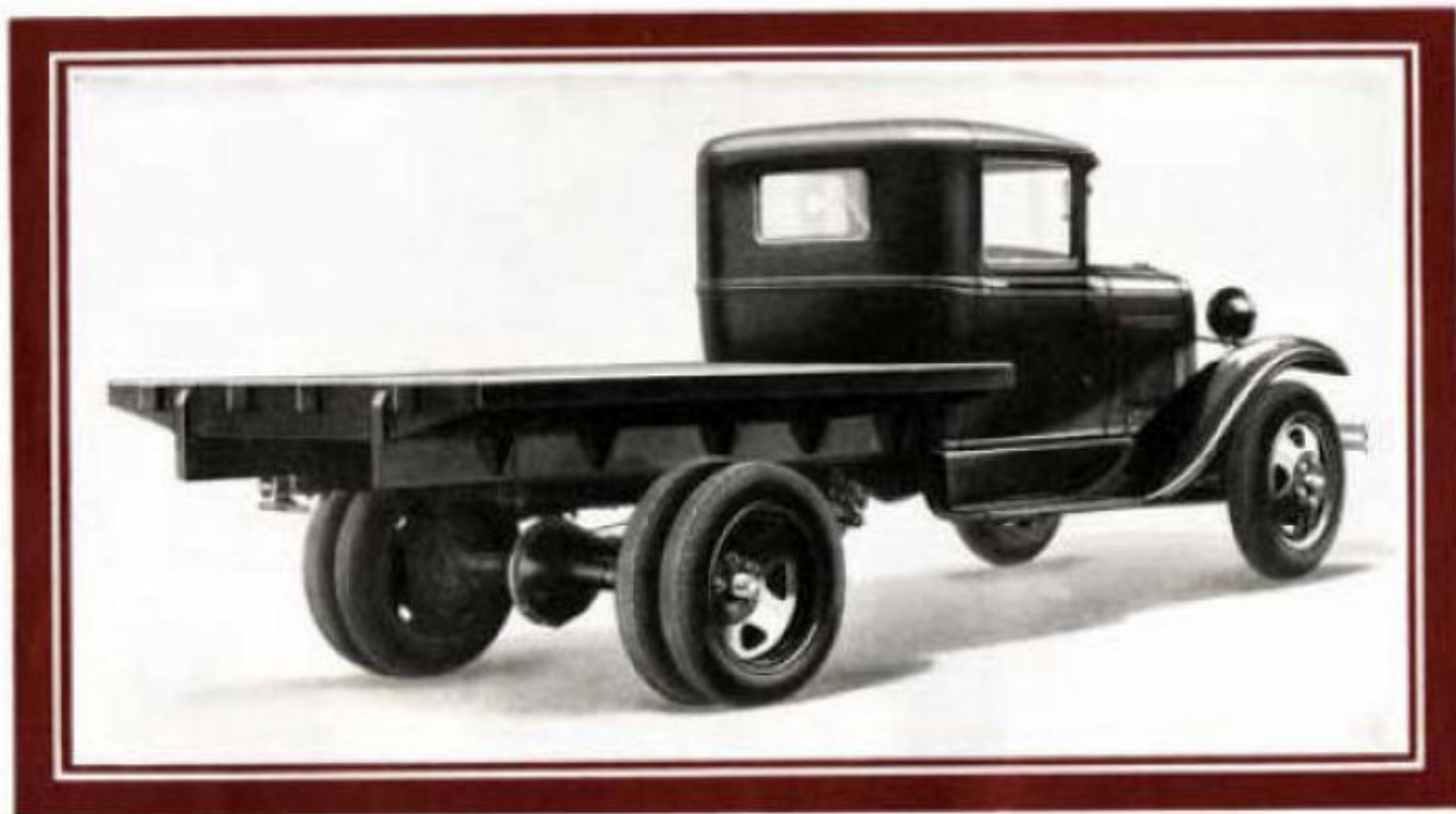
*Stake
Body—
131½'
Wheelbase
Chassis*



THIS is the standard Ford stake body truck for ordinary hauling requirements. The stake racks are in nine sections of heavy, seasoned hardwood boards, bolted to pressed steel stakes, which fit snugly into the platform body sockets. A plunger catch locks the rear stake racks and prevents them from bouncing out on rough roads. The open cab is provided with door curtains, which open and close with the doors. The seat is broad and roomy. Either the open cab shown above or the enclosed cab illustrated and described on the opposite page is available for this truck.

The body is 8 1½' long and 5' 8" wide. Stakes extend 26" above the floor.

*Truck with
Platform
Body*



Body dimensions 131½'
wheelbase: 8' 1½' long,
5' 8" wide; 157' wheel-
base: 11' long, 63" wide

THE Ford Platform Body truck is available both in the 131½" and 157" chassis wheelbase lengths, with either the open or enclosed cab. It is built of heavy, seasoned hardwood. The sill is bolted to the chassis frame by means of eight heavy U-bolts, four on each side. Stake sockets are provided for the use of stake sides, or for any special racks. Shown above is the 131½" wheelbase platform truck with enclosed cab.

**Model-A
Pickup
with
Closed Cab**



THE Pickup body is especially suitable for quick deliveries of small or medium sized loads. The body is of steel and is exceedingly sturdy. Stake sockets are provided in the sides. The end-gate is of steel, and is held by a chain. The spare wheel with tire is carried in a fender well forward of the left door. The enclosed cab is all steel. It is low, yet provides ample head room, and seats three persons comfortably.

Body dimensions: 55'
long, 40½' wide and
13' high. Wheelbase:
103½'.

**Model-A
Pickup
with
Open Cab**



Body dimensions:
length 55', width 40½'
and height 13'. Wheel-
base: 103½'.

THIS is the same body design described on the previous page, equipped with the open type cab. This cab has doors similar to those of the roadster. Curtains are provided, which fit on uprights, opening and closing with the doors. The seat is low and comfortable, being 45 inches wide. The windshield, of Triplex shatter-proof glass, is one piece, and tilts in and out for ventilation. The top can be easily removed. The body has heavy floor boards, with steel battens-strips to withstand wear.

**Model-A
Panel
Delivery**



THE Panel Delivery Body affords full protection to the load and driver. It is of good appearance, being built of steel with the roof covered with bright, black, heavy coated rubber material. Double doors at the rear give a wide opening for loading. There is a small window in each door. The driver's compartment has wide doors, is roomy and comfortable, and is equipped with a dome light. The two seats are of the folding type, giving the driver easy access to the interior of the body.

Body dimensions:
length 59½', width
46 3/8', height 54 7/16'.
Wheelbase: 103½'.

**Model-A
De Luxe
Delivery**



Body dimensions:
length 57 9/16', width
43 1/2', height 45 27/32'.
Wheelbase: 103 1/2'.

THE De Luxe Delivery Car is designed for use by exclusive shops and for speedy, safe deliveries of fragile merchandise. This car follows closely the lines of the Ford Sedan. The body is all steel, and sturdy. There are two folding seats in the driver's compartment, upholstered in dark cross cobra grain artificial leather. Both the driver's compartment and a large door in the rear give access to the loading compartment. A Panel window in this door gives the driver rear vision.

SPECIFICATIONS

Model AA Ford Truck Chassis

Engine ▲ Four-cylinder "L" head, cast in bloc. Piston displacement, 200.5 cubic inches; bore, 3 $\frac{1}{4}$ inches; stroke, 4 $\frac{1}{2}$ inches; horsepower rating, S. A. E., 24.00; brake horsepower, 40 at 2200 R. P. M. Simplicity of the electrical, ignition, cooling, lubrication and fuel systems is a feature which gives efficiency and reliability.

Brakes ▲ Service brakes on all four wheels. Emergency brakes operate independently on rear wheels. All are internal-expanding and fully enclosed. Greatly enlarged service brake-drums on the front wheels give increased braking power. Total braking surface is 474 $\frac{1}{2}$ sq. in.

Springs and Torque Tube ▲ Rear springs of the Ford trucks are full cantilever. Torque-tube drive relieves the springs of any but their natural function of absorbing shocks.

Wheels and Tires ▲ Steel disc wheels. Tires, front, 6.00 x 20, heavy duty ballrooms (six-ply); rear single wheel, 32 x 6, high pressure (eight-ply); dual rear wheels, 6.00 x 20 heavy duty ballrooms (six-ply).

Cooling ▲ Centrifugal water pump; tubular radiator; two-blade airplane propeller type fan 16 inches in diameter, driven by adjustable "V" belt. Capacity, 3 gallons.

Chassis Dimensions ▲ Standard 131 $\frac{1}{2}$ in. chassis—Overall width across single rear hubs, 69 $\frac{1}{2}$ in. Overall width across dual

wheel tires, 76 $\frac{7}{16}$ in. Overall length, 183 $\frac{1}{2}$ in. Long 137 in. chassis—Overall length, 223 $\frac{9}{16}$ in.

Rear Axle ▲ Spiral bevel gear, three-quarters floating. Gear ratios, 6.6 to 1 and 5.14 to 1.

Turning Circle ▲ Standard 131 $\frac{1}{2}$ in. chassis, 46 ft. Long 137 in. chassis, 37 ft. 2 in.

Wheelbase ▲ 131 $\frac{1}{2}$ in., 137 in.

Front Construction ▲ The front spring is a special Ford design transverse type. It is heavier than formerly with wider leaves. Front radius-rod is heavier, and king-pins, wheel bearings and thrust bearings are larger. The new front axle is twice as strong as before. It is a chrome-alloy steel forging, "I" beam construction. Adjustable taper roller bearings for wheels.

Frame ▲ Standard 131 $\frac{1}{2}$ in. chassis—Thickness 7.32 in. Side members 6 in. deep and 2 $\frac{1}{2}$ in. wide. Frame is tapered and has five unusually heavy crossmembers. May be shortened 27 inches to accommodate dump bodies. Length from back of cab, 81 $\frac{1}{2}$ in.; from back of cab to centerline of rear axle, 51 $\frac{1}{2}$ in.

Long 137 in. chassis—Thickness, 7.32 in. Side members, 7 in. deep, 2 $\frac{1}{2}$ in. wide. Length from back of cab, 120-25.32 in., from back of cab to centerline of rear axle, 77-9.32 in.

Model "A" Chassis

Engine ▲ Four-cylinder "L" head, cast in bloc. Piston displacement, 200.5 cubic inches; bore, 3 $\frac{1}{4}$ inches; stroke, 4 $\frac{1}{2}$ inches; horsepower rating, S. A. E., 24.00; brake horsepower, 40 at 2200 R. P. M.

Brakes ▲ Fully enclosed, four-wheel mechanical, internal expanding shoe type brakes operated by service pedal. Separate emergency brake on rear wheels, operated by hand lever; mechanical, internal expanding band, full emergency. Total braking surface of six-brake system, 225 $\frac{1}{2}$ square inches.

Cooling ▲ Centrifugal water pump in cylinder head on shaft which also operates fan. Tubular radiator, two-blade airplane propeller type fan 16 inches in diameter, driven by adjustable "V" belt. Capacity, 3 gallons.

Fuel ▲ Gravity feed from welded steel tank built integral with cowl. Capacity of tank, 10 gallons.

Springs ▲ New transverse, both front and rear, chrome steel.

Rear Axle ▲ Three-quarters floating type. Spiral bevel gear and pinion. Roller bearings throughout. Gear ratio, 3.77 to 1.

Front Axle ▲ Chrome alloy steel forging, "I" beam construction; adjustable taper roller bearings for wheels.

Drive ▲ Torque tube. Exceptionally heavy radius rods.

Lights ▲ Twolite, deflecting beam headlights, combination tail and stop light. Dash light on instrument panel.

Tires ▲ Ballrooms, 4.75 x 19.

Wheelbase ▲ 103 $\frac{1}{2}$ inches.

Wheels ▲ Steel-spoke.

Turning Radius ▲ 17 feet; circle, 34 feet.

Tread ▲ 56 inches.

Road Clearance ▲ 9 inches.

It's reserve the right to make changes, without notice, in prices, specifications, and equipment at any time without incurring any obligations.

FORD MOTOR COMPANY
DETROIT, MICH.

