

# Plymouth Station Wagons

THE ROARING '65s / FURY / BELVEDERE / VALIANT *Plymouth*





16 great big, great looking, great going wagons. Big, bigger, and mammoth. That's the Plymouth Wagon story for 1965. Six Furys, six Belvederes, four Valiants. 16 wagons that work and party with equal skill.

The Fury, of course, is the big one. Over 18 feet long. Then comes the Belvedere, hardly little and surprisingly low-priced. Then Valiant, the best all-around compact anywhere.

For picnics or proms, camping or carting, you'll find a Plymouth Wagon just for you. Delve into this book. Admire the comfort features, performance features, the looks, the loads, the fun capacity and the work capacity. And when you close the cover you'll agree these are the most welcome wagons ever.





*Fury III 9-passenger Wagon/gold metallic.*

*Up front, this Fury III Wagon boasts loads of luxury.*

*In back, 10.3 cu.-ft. of hidden luggage space (2-seater).*

# Fury

Fury III/Fury II/Fury I

Big. Plush. Zoomy. (These are only a few of the words that almost describe the look and feel and performance of the new 1965 Plymouth Fury Station Wagons.) The *longest* passenger-pampering Plymouth Wagons ever – with a 121-inch wheelbase – there are six Fury Wagons to choose from. Thirteen colors in all. Five get-up-and-go engines that go from a standard 225-cu.-in. “economy 6” to a rambunctious 426-cu.-in. Commando V-8 optional engine.







*Fury II 6-passenger Wagon/ivory.*

Curved sideglass is featured for the first time by Plymouth for continuity of surface lines as sheet metal and windows blend together.

Tailgate hinging allows the tailgate to open back beyond the bumper for a longer cargo floor area. A spring-loaded, hinged floor panel fills the opening over the bumper for a continuous, smooth floor . . . makes for easier loading.

In two-seated, 6-passenger models, a deep, uncluttered compartment offers 10.3 cu.-ft. storage space. Luggage compartment has a positive

latching cover and optional key-locking cylinder.

#### **Fury III Wagon Standard Equipment:**

The Fury III Wagon is available in two models, a 9-passenger and a 6-passenger. The 9-passenger model has a rear-facing third seat. Both are powered by the 318-cu.-in. V-8 engine. Other standard equipment includes: 3-speed manual transmission. All-vinyl interior trim. Thick, color-keyed carpeting in passenger areas. Color-keyed vinoleum for cargo areas. Power tailgate window on 3-seat model (roll-down tailgate window on 2-seater). Torsion-bar sus-

pension. Oriflow shock - absorbers. Self - adjusting brakes. Electric windshield wipers. Heater/defroster. You also get: Dual tail-lights plus back-up lights. Parking brake warning light. Glove box light. Luggage compartment light. Deep foam front seat cushions. Sun visors, right and left. Cigar lighter. Alternator. Front seat belts. Electric clock.

**Popular options and accessories:** 3-speed automatic transmission with column-mounted selector. 4-speed transmission with Hurst floor shift. Power brakes. Power steering. Power windows. AM or AM-FM radio. Deluxe wheel covers. Roof luggage rack. Spare





*Fury I 6-passenger Wagon/dark blue metallic.*

tire lock. Assist handles. Power tailgate window on 2-seat model.

**You may also select:** An adjustable steering wheel. Auto-Pilot. Electrically operated door-locking system. Remote-control side-view mirror. Day/nite mirror. White sidewall tires. Tinted glass. Air conditioner. Sure-Grip differential.

**Fury II Wagon Standard Equipment:**

Two Fury II models are available — a 9-passenger and 6-passenger. A power tailgate window is standard on the 3-seater; roll-down window on the 2-seater. Single tail-lights. Both are powered by the 318-cu.-in.

V-8 with 3-speed manual transmission.

**You may also select** the same popular options and accessories listed with the Fury III.

**Fury I Wagon Standard Equipment:**

Two 6-passenger models of the Fury I are available. One has a 318-cu.-in. V-8 engine, the other model has a 225-cu.-in. 6-cylinder engine. Both of these models have the same sturdy construction, the same fine appearance and most of the basic features of the rest of the Fury line. You may also, of course, choose from the same popular options and accessories listed with the Fury III.

**Basic Specifications of Fury Wagons**

Overall length . 216.1 in.	Overall height . 57.0 in.
Overall width . 78.1 in.	Wheelbase . . . 121.0 in.

**Floor length:**

Tailgate open, 2nd and 3rd seats folded . . .	128.9 in.
Tailgate closed, 2nd and 3rd seats folded . . .	95.7 in.
Tailgate open, 2nd seat up, 3rd seat folded . .	91.7 in.
Tailgate closed, 2nd seat up, 3rd seat folded .	58.5 in.
Width between rear wheel housings . . . . .	44.9 in.
Height of rear opening . . . . .	29.5 in.
Width of rear opening at floor . . . . .	55.0 in.





*Belvedere II 9-passenger Wagon/ruby.*

# Belvedere

Belvedere II / Belvedere I

A marvelous new way to swing without going out on a limb! That's the wonderful new Plymouth Belvedere!

Four great wagons that live up to and beyond Plymouth's traditional standards for mechanical excellence—set new standards in beauty, reliability and downright endurance. And with a world of options and accessories, you'll find it hard not to find a Belvedere exactly suited to you!

**Belvedere II Wagon Standard Equipment:**  
The Belvedere II Wagon is available in four models—6-passenger and 9-passenger wagons with either the 273-cu.-in. V-8 engine or the 225-cu.-in. 6-cylinder engine. Standard equipment includes: 3-speed manual transmission. All-vinyl interiors. Torsion bar suspension. Oriflow shock absorbers. Self-adjusting brakes. Color-keyed, deep-pile carpeting. Electric windshield wipers. Back-up lights. Right & left sun visors. Alternator. Cigar lighter. Power tailgate win-

*Lots of room to spread your wings in a Belvedere Wagon.*







*Belvedere I 6-passenger Wagon/medium turquoise metallic.*

dow on 3-seat model (roll-down tailgate window on 2-seater). Color-keyed vinoleum for cargo areas. Heater/defroster.

**Popular options and accessories include:** 3-speed column-mounted automatic transmission. 4-speed transmission with Hurst floor shift. Power steering. Power brakes. Power windows. AM or AM-FM radio. White sidewall tires. Tinted glass. Air conditioner.

**Belvedere I Wagon Standard Equipment:**

Available in two 6-passenger models with either the

273-cu.-in. V-8 or the economical 225-cu.-in. 6-cylinder engine. Dollar-saving economy with the look of affluence is the key to these hardworking wagons. Beauty-plus-utility and the same rugged engineering that is truly Plymouth stays consistent right through the Belvedere line.

And, naturally, you can choose from the same list of popular options and accessories that are available with the Belvedere II Wagons.

**Basic Specifications of Belvedere Wagons**

Overall length . . . 208.5 in.	Overall height . . . 55.1 in.
Overall width . . . 75.1 in.	Wheelbase . . . 116.0 in.
Floor length:	
Tailgate open, 2nd and 3rd seats folded . . . 117.9 in.	
Tailgate closed, 2nd and 3rd seats folded . . . 94.3 in.	
Tailgate open, 2nd seat up, 3rd seat folded . . . 83.2 in.	
Tailgate closed, 2nd seat up, 3rd seat folded . . . 56.6 in.	
Width between rear wheel housings . . . . . 45.0 in.	
Height of rear opening . . . . . 27.3 in.	
Width of rear opening at floor . . . . . 49.0 in.	





*Valiant 200 6-passenger Wagon/light tan.*

# Valiant

Valiant 200/Valiant 100

Here's the compact wagon that hasn't forgotten why you buy a compact.

Valiant is the wagon with the flair and dash that most compact wagons miss. And as to performance—here's the one that you can really open up on the highway, yet at the same time it gives you free-wheeling handling ease—even in city traffic. The right combination of eager performance, surprising capacity and

miserly gas economy. Amazing how all these desirable things come in one beautiful compact package, isn't it?

There are two Valiant 200 6-passenger Wagons and two Valiant 100 6-passenger Wagons. Four thrifty choices in all.

**Valiant 200 Wagon Standard Equipment:**

Available in two models—either the lively 273-cu.-in. V-8 or the thrifty 170-cu.-in. 6-cylinder engine.

*Ample space for gear or for going places in a Valiant.*







*Valiant 100 6-passenger Wagon/black.*

Standard equipment includes: Manual 3-speed transmission. Heater and defroster. Thick, color-keyed carpeting in passenger areas. Color-keyed rubber mat in the cargo areas. Roll-down rear window.

**Popular options and accessories:** Roof luggage rack. Power tailgate window. Wind deflectors. Torque-Flite automatic transmission with column-mounted shift. Deluxe wheel covers. Whitewall tires. Windshield washers with variable speed wipers. Day/night rear-view mirror.

**Valiant 100 Wagon Standard Equipment:**

Also available in two models — either with the lively 273-cu.-in. V-8 or the economical 170-cu.-in. 6-cylinder engine — these wagons have durable patterned vinyl seats plus the same standard equipment listed above for the 200 series, except for black rubber floor mats.

The same popular options and accessories listed with the 200 series are available with the 100, except for the all-vinyl trim.

**Basic Specifications of Valiant Wagons**

Overall length .....	188.8 in.
Overall width .....	70.1 in.
Overall height .....	54.5 in.
Wheelbase .....	106.0 in.
Floor length:	
Tailgate open, 2nd seat folded .....	105.3 in.
Tailgate closed, 2nd seat folded .....	83.8 in.
Width between rear wheel housings .....	43.5 in.
Height of rear opening .....	26.1 in.
Width of rear opening at floor .....	44.3 in.



# Trailer Towing

The special equipment offered in these packages matches your wagon to your trailer towing requirements. Fury, Belvedere and Valiant—all have excellent trailer towing characteristics. Featuring torsion-bar suspension and high performance engines, they have the power, directional stability, ride and handling qualities to make towing your trailer a safe and relaxing experience. And with TorqueFlite automatic transmission you get maximum downhill braking from the engine and top pulling power on grades at the flip of a lever.

## Fury and Belvedere Trailer-Towing Package Medium and Heavy Duty Towing

Maximum loaded gross trailer weight—Fury: 5000 lbs. Belvedere: 4000 lbs. Trailer package is required for trailers with gross weight of 2500 lbs. for the Fury, 2000 lbs. for the Belvedere.

**Standard package equipment:** High-capacity cooling system including: Special radiator. High-pressure cap-16 psi. Large 18" fan. Fan shroud. Yoke-to-hood air seal.

Performance axle, Fury & Belvedere—3.23 ratio.

Fury 6-cylinder 3.55 ratio.

Heavy-duty suspension front and rear with sway bar. Power brakes—11" front and rear (non self adjusting).

Oversize tires: Fury—8.55 x 14. Belvedere—8.25 x 14 (use of tire chains should be avoided).

Wide wheel rims.

Heavy duty turn signal flasher.

Heavy duty stop lamp switch.

Automatic transmission only (manual transmission is not available).

**Optional equipment recommendations:** These options will provide better performance and safer driving

when pulling a loaded trailer: Sure-Grip differential (n/a Fury 6-cylinder). High-output alternator—40 amp. Heavy-duty battery with heat shield—70 amp. hour. Power brakes (standard on Fury wagon). Power steering. High-performance optional engines as shown on p. 12).

## Valiant Trailer-Towing Package

### Heavy-Duty Towing

Maximum loaded gross trailer weight—2000 lbs.

Trailer package is required for trailers with gross weight of 1500 lbs.

**Standard package equipment:** High capacity-cooling system including: Special radiator. High-pressure cap—16 psi. Large 17" fan. Fan shroud. Yoke-to-hood air seal.

Heavy-duty axle 3.23 ratio with 225-6 cyl. and V-8 engines.

Heavy-duty suspension front and rear with sway bar. Power brakes.

7.00 x 13 tires.

Heavy-duty turn signal flasher.

Heavy-duty stop lamp switch.

Automatic transmission only (manual transmission is not available).

**Optional equipment recommendations:** Power steering. Sure-Grip differential. High-output alternator—46 amp. Heavy-duty battery—70 amp. hour. 225-6-cyl. or V-8 engine.

### Before You Go . . .

Increase air pressure in all tires 4 pounds over normal pressure.

Do not exceed trailer tongue load (weight that's carried on the car, rather than on the trailer's wheels).

Be sure you have the right kind of trailer hitch for the load you're towing (Bumper hitch—light-duty

trailer towing only; frame hitches—light- and medium-duty towing; load-equalizing hitches—heavy-duty towing). To fulfill the terms of your warranty coverage, a load-equalizing hitch must be used for trailer tongue loads of:

Valiant—150 lbs. Belvedere—200 lbs. Fury—250 lbs.

Consult your trailer dealer for the type of hitch you require.

### As You Go . . .

**When launching a boat** always be sure to have your service dealer promptly check the rear axle lubricant of your car, if the rear axle should happen to submerge.

**With TorqueFlite** switch to second when going up or down steep grades. This provides better pulling power and more effective downhill braking and engine cooling. It also reduces torque-converter action, which improves gas economy.

**With air-conditioning**, to avoid engine overheating, use a lower gear when climbing hills. Shift to neutral when stopped in heavy traffic and idle the engine at higher than normal speed. Reduce speed when cruising on the highway. (If engine continues to overheat shut off air conditioner temporarily, until temperature returns to normal.)

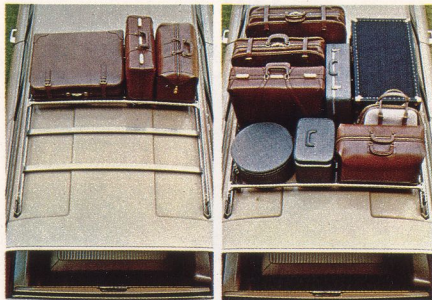
### Your Warranty Coverage . . .

Trailer towing puts an extra load on the engine, transmission and rear axle of any car. These parts are warranted\* for five years or 50,000 miles on your 1965 Plymouth station wagon when it is equipped with the trailer-towing package that meets the weight requirements specified above. It is recommended that the driving precautions contained herein be followed to reduce the possibility of abnormal use.

\*HERE'S HOW PLYMOUTH'S STRONG 5-YEAR/50,000-MILE WARRANTY PROTECTS YOU: Chrysler Corporation warrants for 5 years or 50,000 miles, whichever comes first, against defects in materials and workmanship and will replace or repair at a Chrysler Motors Corporation Authorized Dealer's place of business, the engine block, head and internal parts, intake manifold, water pump, transmission case and internal parts (excluding manual clutch) torque converter, drive shaft, universal joints, rear axle and differential, and rear wheel bearings of its 1965 automobiles, provided the owner has the engine oil changed every 3 months or 4,000 miles, whichever comes first, the oil filter replaced every second oil change and the carburetor air filter cleaned every 6 months and replaced every 2 years, and every 6 months furnishes to such a dealer evidence of performance of the required service, and requests the dealer to certify (1) receipt of such evidence and (2) the car's then current mileage.



# Popular Options and Accessories



**Adjustable luggage rack** (Fury only) gives added carrying space — makes more room inside. The rear crossbar is locked in position by two retaining devices, can be adjusted to varying load lengths. Other stylish luggage racks are available for Belvedere and Valiant.



**New, high-capacity air conditioning** combines heating and cooling units in one compact unit. Fury unit illustrated, with other units available for Belvedere and Valiant wagons.

Plymouth Station Wagons boast a wealth of extra-cost options and accessories that offer those "touches of luxury" you can pick to custom-tailor your wagon to your taste. Illustrated here are a few of the most popular items.

**Other popular options include:** Sure-Grip differential for maximum, positive power transmission with minimum wheel spin. Day/nite mirror to cut glare from following



**Outside remote-control mirror** can be aimed accurately and simply without opening the window, by adjusting lever on the inside of the door panel.



**Power brakes**—especially when towing a trailer—are a safety "must". A rewarding convenience feature for heavy city traffic driving, too.

headlamps and rainy streets. Power-operated 6-way seat adjustment (Fury only). Power windows (n/a Valiant). AM/FM transistorized radios (n/a Valiant). Windshield washers and variable-speed electrically operated windshield wipers. Spot light. Map and courtesy lights. Electric door locks (Fury only). The Auto-Pilot is a new option



**Wind deflectors** on the Belvedere and Valiant add a touch of practical distinction, as well as providing clean ventilation.



**Power steering** is a popular fatigue-reducing option, particularly in heavy traffic. A quick-acting, extra margin of safety in tight spots.



**Power tailgate window** saves steps when operated from the dash-mounted control switch. Great for bad weather. Or for obtaining clean straight-through ventilation.

on Plymouth Fury Wagons this year. With a simple setting of the control, it enables you to cruise at a steady, predetermined turnpike speed — up hill, down dale — for effortless driving and significant gas economy. A touch of the brake or accelerator pedal immediately disengages the Auto-Pilot to bring speed back to your control.



# Engine Options

Performance to match any wagon wants. That's the Plymouth power story for '65. Experience gained on the test track, racetracks, economy runs, has enabled Plymouth engineers to design the exact type of get-up-and-go power needed to match the superb work and play characteristics of 1965 Plymouth Station Wagons. (See the table below for performance specifications and model availabilities.

SPECIFICATIONS										
Displacement, cu. in.	170	225	273		318	361	383		426	
Carburetors, Number and Type	1, 1-bbl		1, 2-bbl	1, 4-bbl	1, 2-bbl		1, 4-bbl		2, 4-bbl Ram	
Number of Cylinders and Type of Valves	6, in-line, OHV		90° V-8, OHV							
Bore	3.4		3.63		3.91	4.12	4.25			
Stroke	3.125	4.125	3.31			3.38			3.75	
Compression Ratio	8.5	8.4	8.8	10.5	9.0		9.2	10.0	10.3	12.5
Camshaft Type	Standard			Special	Standard			Special		
Fuel Recommended	Regular			Prem.	Regular			Premium	Premium(a)	
(a) Highest octane fuel available.										
AVAILABILITY										
S—Standard Equipment O—Optional Equipment										
Valiant	Six	S	O							
	Eight			S	O					
Belvedere	Six		S							
	Eight			S		O	O		O	O
Fury	Six		S							
	Eight					S		O	O	O

# Colors and

(Solid colors only available on wagons)

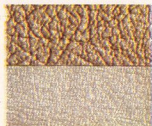
	
<b>A</b> Gold metallic	<b>L</b> Dk. turquoise metallic
	
<b>B</b> Black	<b>P</b> Ruby
	
<b>C</b> Light blue	<b>S</b> Ivory
	
<b>D</b> Med. blue metallic	<b>T</b> Med. red metallic
	
<b>E</b> Dk. blue metallic	<b>W</b> White
	
<b>J</b> Light turquoise	<b>X</b> Light tan
	
<b>K</b> Med. turq. metallic	<b>Y</b> Med. tan metallic



# Interiors

## FURY

III (All vinyl, std.)



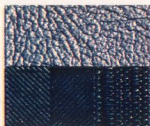
Gold A,B,S,W

II (All vinyl, std.)

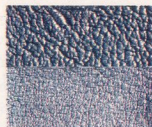


Blue B,C,D,E,W

I (All vinyl, std.)



Blue B,C,D,E,W



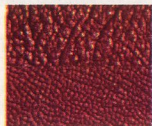
Blue B,C,D,E,W



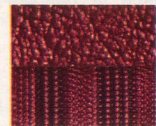
Tan S,W,X,Y



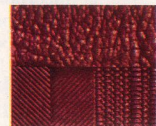
Tan J,K,L,S,W,X,Y



Red B,T,W



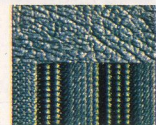
Red B,T,W



Red B,T,W



Tan W,X,Y



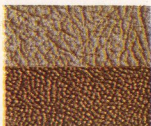
Turq. B,J,K,L,W



Turq. B,J,K,L,W

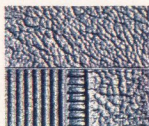
## BELVEDERE

II (All vinyl, std.)



Gold A,B,S,W

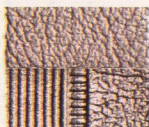
I (All vinyl, std.)



Blue B,C,D,E,W



Blue B,C,D,E,W



Tan J,K,L,S,W,X,Y



Tan X,Y



Red B,P,W



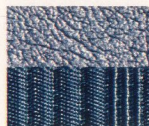
Red B,P,W



Turq. B,J,K,L,W

## VALIANT

200 (Cloth-vinyl, std.)



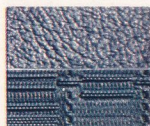
Blue B,C,D,E,W

200 (All vinyl, opt.)

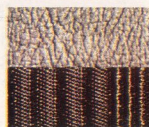


Blue B,C,D,E,W

100 (All vinyl, std.)



Blue B,C,D,E,W



Tan B,S,W,X,Y



Tan B,S,W,X,Y



Tan B,J,K,W,X,Y



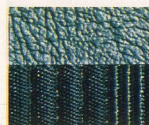
Red B,P,T,W



Red B,P,T,W



Red B,P,W



Turq. B,J,K,W



Turq. B,J,K,W



# Additional Specifications

## Fury

### Brakes

Hydraulic, 11-in. diameter, 2.75-in. wide (front) and 2.0-in. wide (rear), servo-contact, self-energizing brakes, with bonded linings. Lining area is 202.1 sq. in. Brake shoes are internal-expanding type. A self-adjusting feature (activated during reverse stops) is incorporated in the design. Separate, foot-operated parking brake, cable-connected, acts on each rear wheel.

### Suspension

Front . . . . . torsion bars and ball joints.  
Rear . . . . . 2.5-in.-wide asymmetrical leaf springs—6½ leaves.  
Shock absorbers . . . . . Oriflow type.

### Electrical system

Heavy-duty, 12-volt, 54-plate, 48-ampere-hour battery.  
Chrysler Corporation alternator with high charging rate at low engine speeds.

### Rear axle ratios

(Hotchkiss drive type, hypoid rear axle)  
TorqueFlite 318-cu.-in. V-8 . . . . . 2.93:1  
TorqueFlite 6 . . . . . 3.23:1  
Manual 6 . . . . . 3.55:1  
Manual V-8 . . . . . 3.23:1

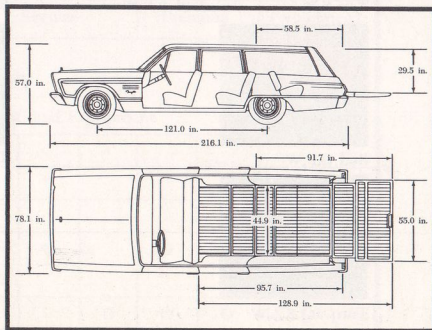
### Tires and wheels\* Wheels Tires

6-cylinder station wagons . . . 5.5K x 14 8.25 x 14  
8-cylinder station wagons . . . . 6K x 14 8.55 x 14

\*Safety-rim wheels with low-pressure tubeless tires standard on all models.

### Capacities

Fuel tank . . . . . 22 gallons  
Cooling system, 6-cylinder engines . . . 13 quarts  
Cooling system, 8-cylinder engines . . . 21 quarts  
Lubricating oil . . . . . 4 quarts



## Belvedere

### Brakes

Hydraulic, 10-inch diameter, 2.5-inch-wide, servo-contact, self-energizing brakes, with bonded linings. Lining area is 195.2 square inches. Brake shoes are internal-expanding type. A self-adjusting feature (activated during reverse stops) is incorporated in the design. Separate, foot-operated parking brake, cable-connected, acts on each rear wheel.

### Suspension

Front . . . . . torsion bars and ball joints.  
Rear . . . . . 2.5-in.-wide asymmetrical leaf springs—6½ leaves.  
Shock absorbers . . . . . Oriflow type.

### Electrical system

Heavy-duty, 12-volt, 54-plate, 48-ampere-hour battery.  
Chrysler Corporation alternator with high charging rate at low engine speeds.

### Rear axle ratios

(Hotchkiss drive type, hypoid rear axle)  
TorqueFlite V-8 . . . . . 2.93:1  
(with 361-, 383-, and 4-bbl. 426 engines) 3.23:1  
TorqueFlite 6 . . . . . 2.93:1  
Manual 6 . . . . . 3.31:1



Manual V-8 .....3.23:1

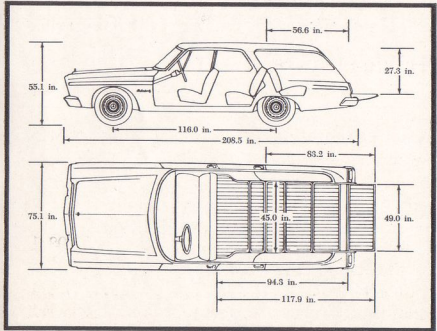
**Tires and wheels\* Wheels Tires**

Standard (all wagons).....5.5K x 14 7.75 x 14  
 Optional (all wagons)....5.5K x 14 8.25 x 14

\*Safety-rim wheels with low-pressure tubeless tires standard on all models.

**Capacities**

Fuel tank .....21 gallons  
 Cooling system, 6-cylinder engines....13 quarts  
 Cooling system, 8-cylinder engines...21 quarts  
 Lubricating oil .....4 quarts



**Valiant**

**Brakes**

Hydraulic, 9-in. diameter, 2.5-in. wide (front) and 2.0-in. wide (rear), servo-contact, self-energizing brakes, with molded asbestos linings. Lining area is 153.5 sq. in. Brake shoes are internal-expanding type. Separate, hand-operated parking brake, cable-connected, acts on each rear wheel.

**Suspension**

Front .....torsion bars and ball joints.  
 Rear....2½-in.-wide asymmetrical leaf springs.  
 - 5 leaves on 6-cylinder  
 - 6 leaves on V-8 model

Shock absorbers .....Oriflow type.

**Electrical system**

12-volt, 38-ampere-hour battery with 170-cu.-in. 6-cylinder engine.  
 Chrysler Corporation alternator with high charging rate at low engine speeds.

**Rear axle ratios**

(Hotchkiss drive type, hypoid rear axle)  
 TorqueFlite 6 .....3.23:1  
 Manual 6 .....3.23:1

**Tires and wheels\* Wheels Tires**

6-cylinder station wagons.. 4.5K x 13 6.50 x 13

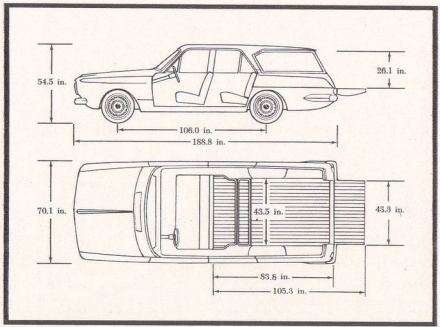
The policy of Chrysler Corporation is one of continual improvement in design and manufacture wherever possible to assure a still finer car. Hence, specifications, equipment and prices are subject to change without notice. Automobiles pictured show optional equipment items. Production information published herein, while correct at time of publication, is subject to change.

8-cylinder station wagons.. 4.5K x 13 7.00 x 13

\*Safety-rim wheels with low-pressure tubeless tires standard on all models.

**Capacities**

Fuel tank .....18 gallons  
 Cooling system....12 quarts, 170-cu.-in. engine  
 17 quarts, V-8 engine  
 Lubricating oil .....4 quarts





PLYMOUTH DIVISION  **CHRYSLER**  
MOTORS CORPORATION