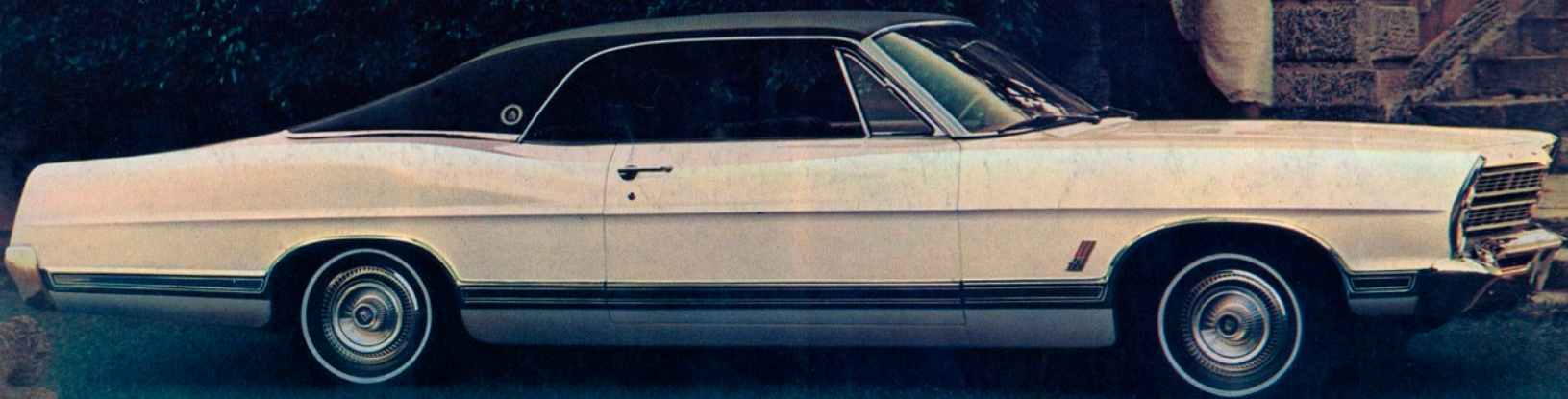
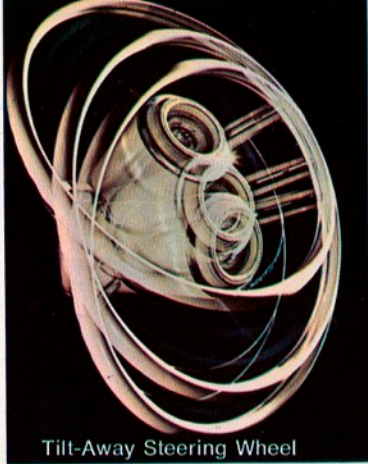


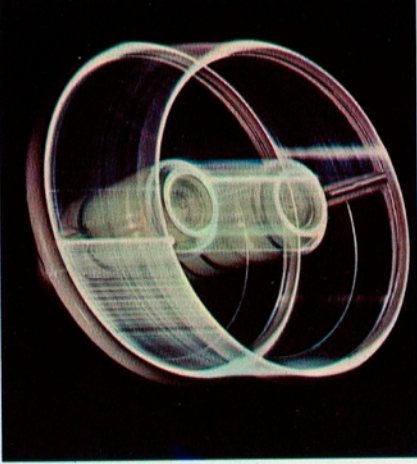
MUSTANG / FALCON / FAIRLANE / FORD / THUNDERBIRD

YOU'RE AHEAD IN A '67 FORD

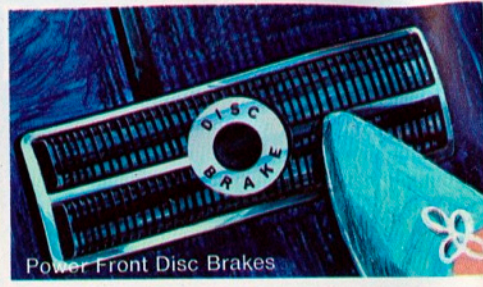




Tilt-Away Steering Wheel



BRAKES



Power Front Disc Brakes



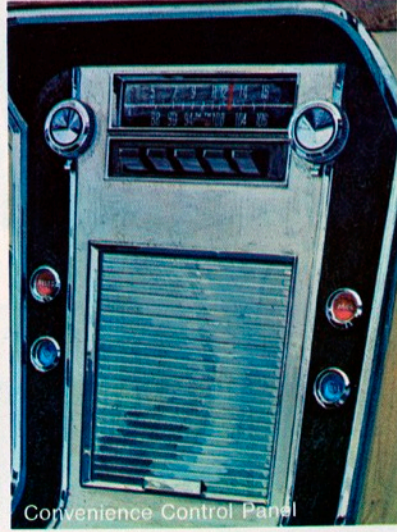
SelectAir Conditioner



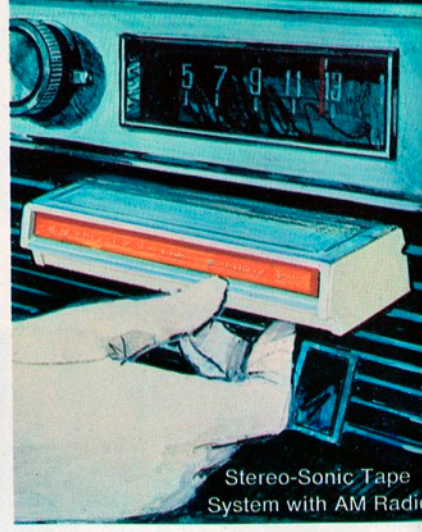
"Tailored Tires"



SelectShift
Cruise-O-Matic



Convenience Control Panel



Stereo-Sonic Tape
System with AM Radio

YOU'RE AHEAD IN A FORD IN ALL THESE WAYS...

A wave of better ideas puts you ahead in the '67 cars from Ford. These are the newest Ford Engineering Magic ideas. You'll find them available on most of our new cars to add new comfort, new convenience, new enjoyment every mile you drive. **Tilt-Away Steering Wheel** moves out of your way automatically when you open the door, adjusts up or down to nine different driving positions. New **Dual Brake System** is one

of Ford's standard equipment safety features (see back cover). **Power Front Disc Brakes** are more fade-resistant, virtually unaffected by water. **SelectShift Cruise-O-Matic** is the fully automatic transmission that also lets you shift manually when you want to . . . *without* a clutch. **SelectAir Conditioner** is a year-round climate control system . . . provides cool, dry air for summer, plenty of warm air for winter.



Comfort-Stream Ventilation



Thunderbird SL Interior



Fingertip Speed Control



Wagon Magic Doorgate

Multi-speaker **Stereo-Sonic Tape System** with AM Radio lets you choose your favorite radio program or snap in a tape cartridge for over 70 minutes of your favorite stereo music. Ford's **Convenience Control Panel** warns you when a door is ajar, fuel is low, parking brake is on and reminds you to fasten seat belts . . . provides control for automatic door locks. Ford's selection of "**Tailored Tires**"

includes Wide-Oval Sports Tires that put more tread on the road, exclusive Radial Ply tires that run cooler, provide up to 80% more tread life. One of the widest choice of tires to better provide for your driving needs. New **Comfort-Stream Ventilation** continuously draws in fresh air, lets it circulate, then exhausts stale air with windows closed. **Fingertip Speed Control**, designed into the turn signal lever, lets you cruise

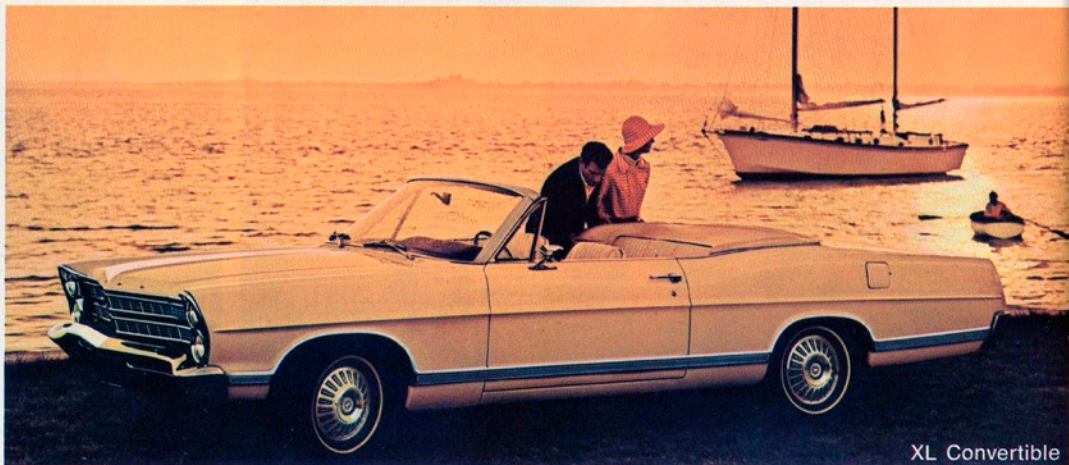
at turnpike speeds with your foot off the accelerator. Thunderbird introduces an all-new Four-Door Landau, new **SL Interiors** of salon elegance, "rolling" door locks that lock automatically over 8 mph. Ford's better ideas in wagons include the **Magic Doorgate** that opens as a door for people, a tailgate for cargo; an adjustable roof rack, fits any size load. Learn more about all the "way-ahead" '67 Fords. Read on.



XL 2-Door Hardtop



LTD 4-Door Hardtop



XL Convertible

1967 FORD

Luxury leaders of the volume car field. Quieter because they are stronger . . . stronger because they are better built. Eighteen new Ford models bring you a finer kind of quality and quiet, smooth ride known around the world. There is a new SelectShift Cruise-O-Matic, Comfort-Stream Ventilation, Stereo Tape, Fingertip Speed Control, many more exciting features.

Three new luxurious LTD models . . . an

exclusive 2-door hardtop, with rich, formal vinyl roof, a 4-door hardtop and all-new 4-door sedan . . . radiate the quiet elegance of a custom limousine. LTD interiors alone make them the fine cars of their field. And optional Twin-Comfort Lounge Front Seats permit individual adjustment, with separate center arm rests for driver and passenger. All models are equipped with the 289-cu. in. Challenger V-8 engine, SelectShift



LTD 2-Door Hardtop



LTD Twin-Comfort Lounge Seats



XL Bucket Seats



Galaxie 500 2-Door Hardtop



Custom 500 4-Door Sedan



XL Reclining Bucket Seats

Cruise-O-Matic and Comfort-Stream Ventilation.

There's excitement in every inch of the sporty Ford XL 2-Door Hardtop and Convertible. Standard with XL's is the big 289-cu. in. Challenger V-8. Standard XL interior has leather-smooth all-vinyl trim, Thunderbird bucket seats, command console, T-bar shift lever with SelectShift Cruise-O-Matic. The XL Convertible's durable 5-ply vinyl top has a tempered safety glass rear

window. Reclining Bucket Seat with adjustable headrest, and a 7-Litre Package with 428-cu. in. V-8, power front disc brakes and special suspension are exclusive XL options.

Popular Galaxie 500's are the Ford line's most versatile series. They are offered in sporty 2-door and 4-door hardtops, a 4-door sedan and an exciting convertible.

Ford's Custom 500 and Custom series spell

economy in a handsome, low-priced package. There's luxury throughout with full carpeting, foam-padded seats, courtesy lighting, much more. Operating savings from the 240-cu. in. Big Six and fully synchronized drive. Like all other Fords, you can equip your Custom 500 with a host of popular options to suit your personal taste—a choice of four V-8's, up to 428 cu. in., SelectShift Cruise-O-Matic, and many more.



Futura Sports Coupe



Futura 4-Door Sedan



Choice of two V-8's



SelectShift Cruise-O-Matic

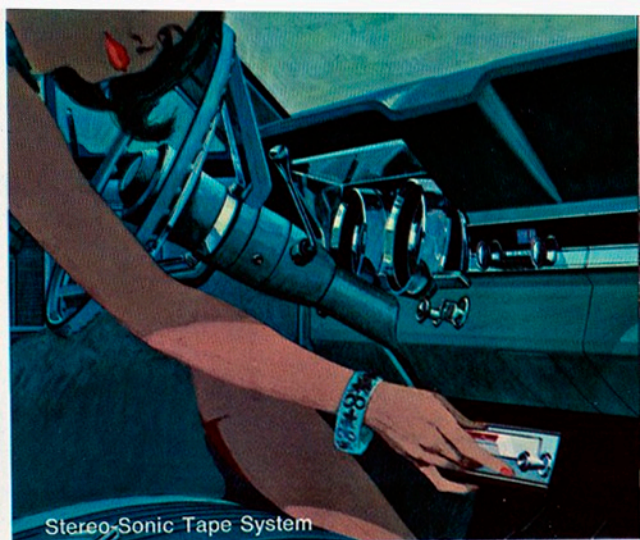
1967 FALCON

Go pert, peppy and proud . . . in a Falcon. For Falcon is more luxurious, offers more power for '67. If it didn't cost so little, save so much and park so neatly, you might think it was a short limousine. Falcon scats even farther ahead of its field with a smoother, quieter, more stable ride, new interior luxury, and Ford's standard equipment safety package which includes a dual brake system, lane-change signal and much more.

Falcon also offers a fabulous line of optional features that just can't be found on other compact cars. New SelectShift Cruise-O-Matic that's a fully automatic transmission or lets you shift manually if you choose; new multi-speaker Stereo-Sonic Tape System, with self-contained cartridges playing over 70 minutes of your favorite music. SelectAire Conditioner gives you complete year-round climate control—all in one



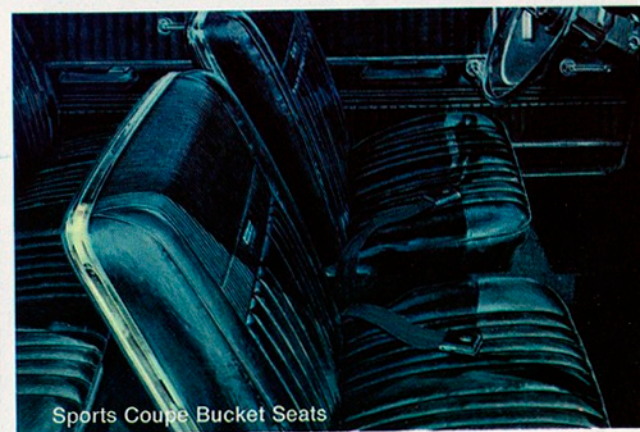
Futura Club Coupe



Stereo-Sonic Tape System



Falcon Club Coupe



Sports Coupe Bucket Seats

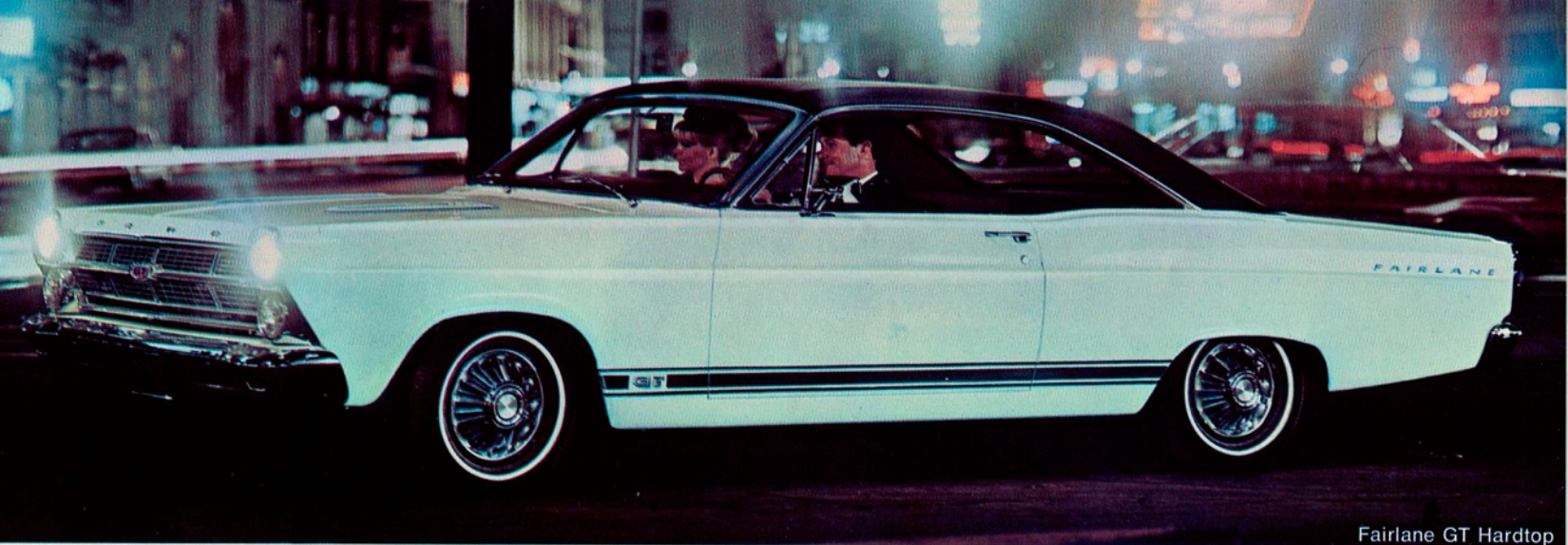
compact, built-in unit; two zippy 289-cu. in. V-8's (up to 225 hp); power front disc brakes with greater fade resistance; wider tire selection to tailor the choice to your driving needs . . . including new Radial Ply Tires that run cooler, offer longer tread life.

Topping the list of 10 new Falcon models is the Futura Sports Coupe with lush bucket seats, deluxe wheel covers, all-vinyl interior, 200-cu.

in. Six as standard. The Futura 4-Door Sedan and Club Coupe offer full-width seats, feature smooth styling and performance with the famous gas-saving 200-cu. in. Fairlane Six. And there are five wonderful Falcon wagons to choose from including three extra-duty Falcon Club Wagons. Courtesy lighting, foam-cushioned seats are but two of the many fine big-car features found on every Falcon. And you can

choose from 15 brilliant Super Diamond Lustre Enamel single tones, or 25 two-tone combinations. In addition, you have a total of 13 upholstery choices of cloth and vinyl combinations or optional all vinyl.

Whether you call it a short limousine or simply a lot of car, you'll say economy never offered such big-car luxury, looked so good, or moved so lithely.



Fairlane GT Hardtop



Fairlane 500/XL



Fairlane 500/XL Interior

1967 FAIRLANE

Join the Fairlaners . . . people who have more fun in the car that has more to offer. Now, Fairlane's the choice of active people who want a stylish performer . . . and money left over to go places and do things. Thirteen fun-lovin' models . . . Ford's standard equipment safety features . . . options such as multi-speaker Stereo Tape System, five economical, sporty-performing engines, power front disc brakes, SelectAir

Conditioner, Wide-Oval Sports Tires . . . these are just part of the excitement of Fairlane '67.

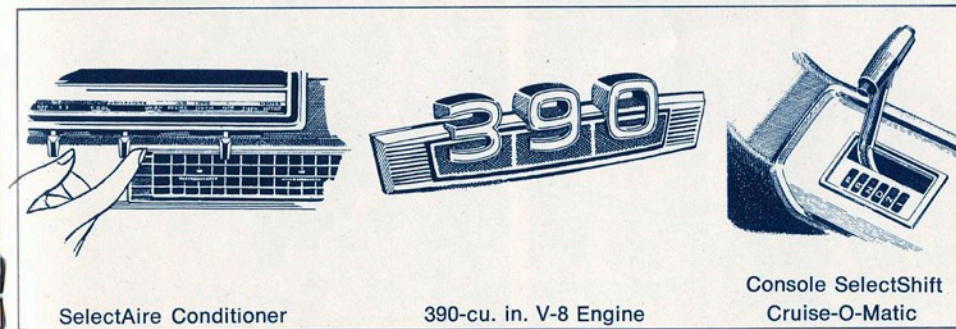
Take the GT Hardtop as just one example. This bucket seat beauty is as great to drive as it is to look at. Standard features include a lively 289-cu. in. Challenger V-8 engine (with two other V-8's available), foam-cushion bucket seats, special GT plaques, GT stripes and a special GT grille. Close-ratio, 4-speed manual



Fairlane 500 Convertible



Fairlane 500 4-Door Sedan



SelectAir Conditioner

390-cu. in. V-8 Engine

Console SelectShift
Cruise-O-Matic



Fairlane Club Coupe

or new SelectShift Cruise-O-Matic transmissions are available.

The Fairlane 500/XL Hardtop and Convertible are luxury cars with sports flair and reasonable price. Their full carpeting, pleated vinyl upholstery (seven color choices), deep foam bucket seats, full length console offer a unique combination of prestige, performance and plus value unequalled by any other car in the Fairlane class.

The Fairlane 500 Convertible proves top-downing needn't be budget-bending and it offers all the features Fairlanes are famous for. There's a 5-ply vinyl top with tempered safety glass rear window. Like its counterpart, the Fairlane 500 Hardtop, the Convertible provides high style vinyl interiors, full carpeting, a great Six and three V-8's from which to pick your performance.

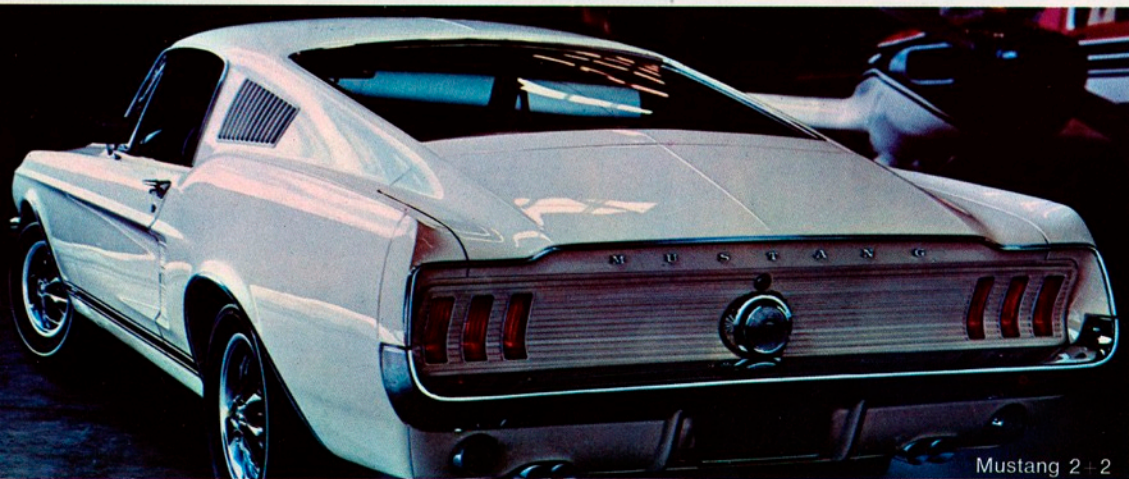
The Fairlane 500 4-Door Sedan and Club

Coupe are big favorites with thrifty standard 200 cu. in. six and fully Synchronized Synchro-Smooth Drive with roomy comfort, dual braking system, keyless-locking and reversible keys.

Fairlane Club Coupe and 4-Door Sedan, lowest-priced of all, combine economy and simplicity with Fairlane's fashionable look and lively action. Drive a new '67 Fairlane. Learn why Fairlaners have more fun . . . for less.



Mustang Hardtop



Mustang 2+2

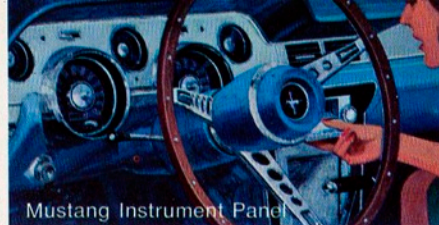
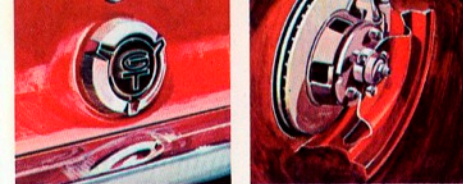


Tilt-Away Steering Wheel

1967 MUSTANG

There are three new ways to answer the call of the Mustang for '67 . . . Mustang Hardtop . . . Convertible . . . and Fastback 2+2. Mustang was bred first to be first. How do you add new excitement to a classic already known as the most exciting car in a generation? This year, we've given Mustang a stylish new body. A wider 58-inch tread for better roadability. A hefty, new 390-cu. in. optional Thunderbird Special V-8.

We've added fresh Mustang options (now totaling well over 100), so that more than ever Mustang is designed to be designed by you. Make your Mustang a one-of-a-kind car with optional features like the Tilt-Away Steering Wheel—that moves out of your way when you open the door and tilts up or down to nine different driving positions; new Fingertip Speed Control—that lets you set cruising speed with a touch of the turn signal



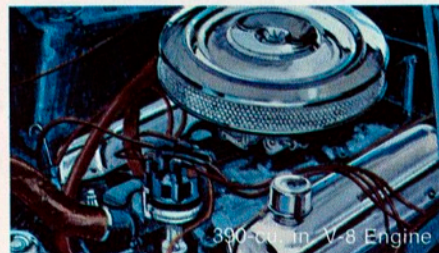
Mustang Instrument Panel



Mustang Convertible



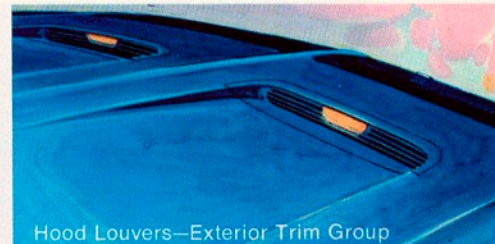
GT Equipment Group



390 cu. in. V-8 Engine



Interior Decor Option



Hood Louvers—Exterior Trim Group



Special Tires, Wheels and Wheel Covers

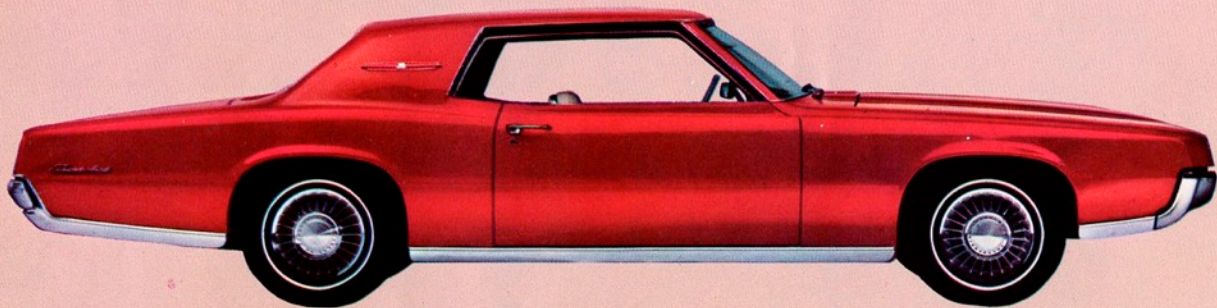
lever. SelectShift Cruise-O-Matic Drive lets you choose—going fully automatic when you prefer or shifting manually *without* a clutch . . . just for the fun of it. New Wide-Oval Sports Tires put extra tread on the road for better traction, give your Mustang a low, sporty look. Styled Steel Wheels are but one “dress-up” option available. A Stereo Tape System will surround you with your favorite music.

Mustang's great list of options stretches on and on for 1967. It includes the plush Interior Decor Group; a new Sport Deck fold-down rear seat that triples luggage space in the Fastback 2+2. Custom Exterior Trim Group includes functional hood louvers with integral turn signal indicators. For Mustang Hardtop or Convertible there's a Full-Width Front Seat option with pull-down arm rest if preferred to bucket seats.

With all that's new for '67, we also kept all the standards that have made Mustang a classic and won a record number of owners (nearly a million-and-a-half in under three years). Bucket seats, full carpeting, floor-mounted shift, vinyl interior trim. Three exciting models (all can be equipped with the optional GT Equipment Group). Most particularly, we kept the long, lean, adventurous look that's so very Mustang.



Thunderbird Four-Door Landau



Thunderbird Two-Door Hardtop



Comfort-Stream Ventilation

1967 THUNDERBIRD

Completely changed, still completely Thunderbird . . . that's the Bird story for '67. When Thunderbird changes, the automobile world watches, for this will be the look of other cars tomorrow. Here are the new Thunderbirds for 1967, two elegant new two-doors, and an historic first four-door.

This newest and most magnificent Thunderbird flies with a 390-cu. in. or optional 428-cu.

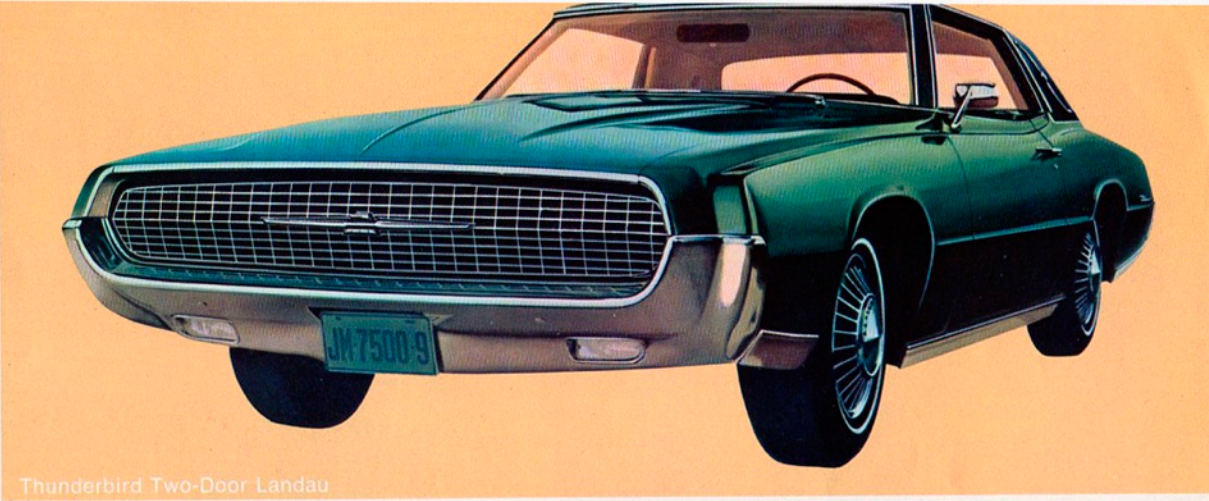
in. V-8 engine . . . new dual brake system with power front disc brakes . . . a new kind of steering wheel (Tilt-Away—that automatically moves out of your way, adjusts up or down to nine driving positions). A host of very special standard luxuries, comfort and safety features make flight in a Thunderbird first class adventure . . . like new SelectShift Cruise-O-Matic which gives you a choice: you can go fully automatic, or play



Thunderbird Interior



Overhead Convenience Control Panel



Thunderbird Two-Door Landau



Classic Thunderbird Cockpit



Full-Width Taillights with Sequential Turn Signals

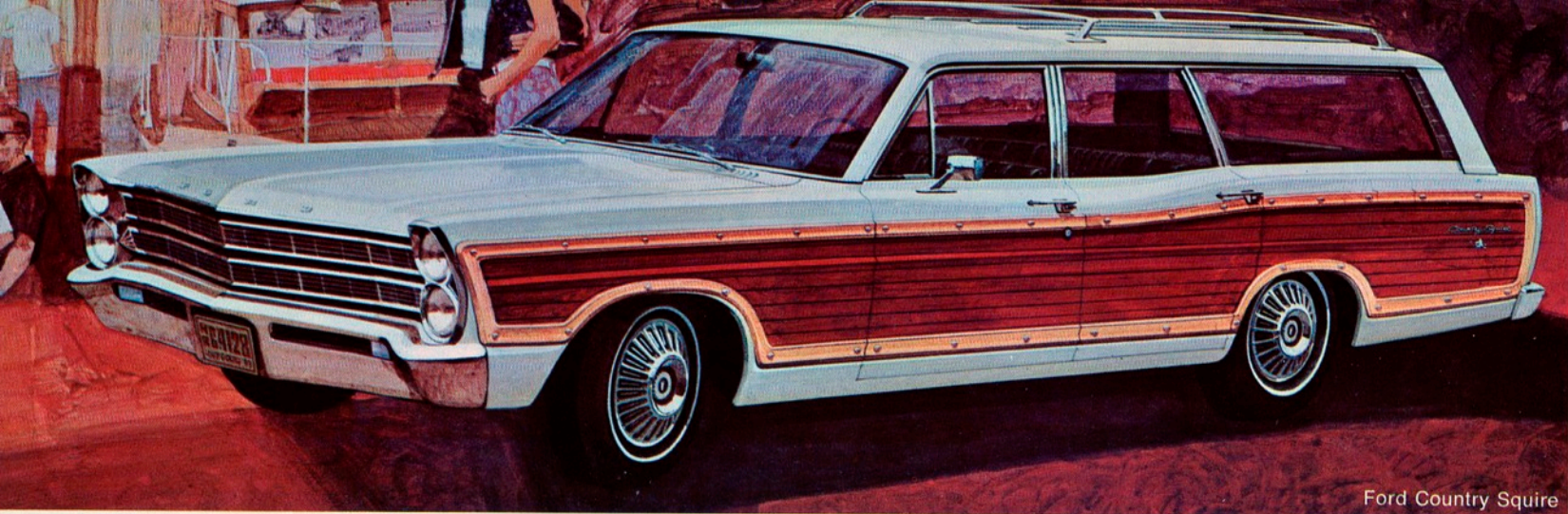
through the gears; integral Comfort-Stream Ventilation that keeps air fresh through four controllable instrument panel vents that adjust with fingertip ease; and Thunderbird's Stereo-Sonic Tape System and Multiplex Stereo Radio—that bring you sound reproduction with concert hall realism through four perfectly balanced speakers.

Thunderbird offers extraordinary luxury in

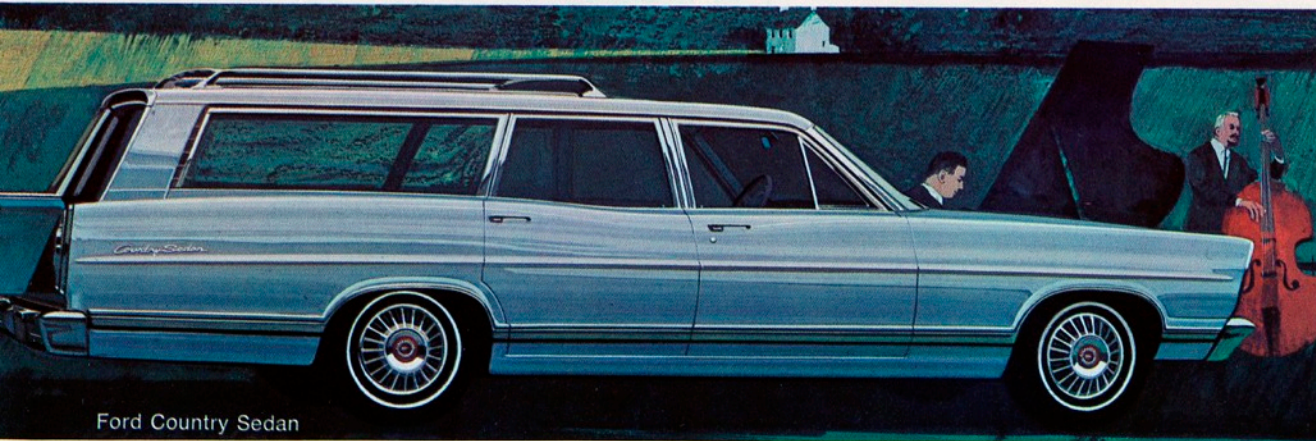
the standard interior (illustrated above) and the SL interior option (shown on page 3). Courtesy lights everywhere. Center arm rests. Deep bucket seats with convenient console between. A Convenience Control Panel option alerts you to buckle seat belts, that fuel is low, a door ajar, or emergency flasher is operating. And as part of this option, Thunderbird's new "rolling-lock" feature locks all doors automati-

cally when car speed reaches 8 miles an hour.

Flick the light switch and sections of the grille fold back to reveal the Bird's headlight beams. And there's no mistaking your turning plans when the sequential turn signals clearly point out the direction. These are just a few reasons why the 1967 Thunderbird . . . completely changed, and still completely Thunderbird . . . offers driving luxury unique in all the world.



Ford Country Squire



Ford Country Sedan



Country Squire Interior

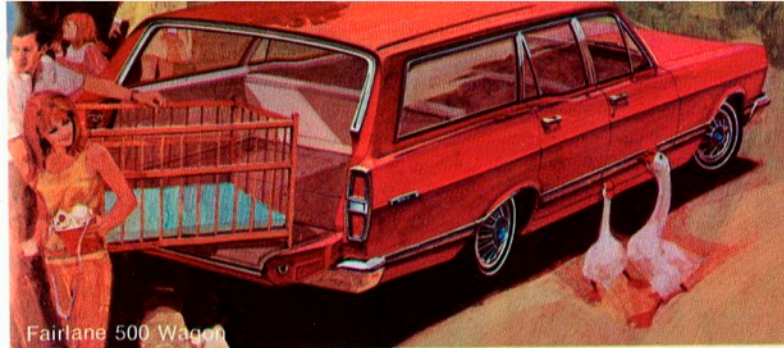
1967 WAGONS BY FORD

Here they are—the wagons with all the better ideas—13 new wagons by Ford, the station wagon specialist! Five big, luxury-packed Fords, three sporty Fairlanes, two economical Falcons, three extra-duty Falcon Club Wagons.

The Ford wagon idea provides finer, richer comfort-styled interiors, exemplified in the Country Squire shown above, and bragging-size loadspace (up to 103 cu. ft.). Country Squire

and Country Sedan wagons offer seating for a family of 10, with exclusive dual-facing rear seats. Power doorgate window is standard.

The Ford idea provides added convenience with Ford's exclusive Magic Doorgate that serves as a conventional tailgate for extra load-space . . . and as a door that swings wide for people (standard on Ford and Fairlane, optional on Falcon wagons except Club Wagons).



Fairlane 500 Wagon



Falcon Futura Wagon



Fairlane Squire Wagon



Adjustable Wagon Roof Rack



Falcon Deluxe Club Wagon

On most wagons by Ford you can have such options as power front disc brakes, an adjustable roof rack, multi-speaker Stereo-Sonic Tape System, SelectAire Conditioner. Big Ford wagons in addition offer Fingertip Speed Control, Convenience Control Panel, Comfort-Stream Ventilation, and many more features to make sure your Ford wagon will be more convenient, more comfortable, more fun.

Ford has better ideas for wagon performance too. Standard engines range from the 170-cu. in. Falcon Six to Ford's 240-cu. in. Big Six. Engine options range all the way up to a lusty 428-cu. in. V-8! Clash-free Synchro-Smooth Drive (the fully synchronized manual) is standard; versatile SelectShift Cruise-O-Matic, optional.

For outdoor fun in big doses, Falcon Club Wagons have 194 cu. ft. of loadspace, acces-

sible through six big doors. Extended Body Option stretches loadspace to 242 cu. ft. It's made to order for anybody who needs big room for fun or work.

See the wagons with all the better ideas, the wagons that offer you a choice of 13 models, from the popular, economical Falcon Club Wagon, to the luxurious Ford Country Squire. It's the fine line of wagons built by Ford.

YOU'RE AHEAD WITH ANY OF FORD'S 47 NEW MODELS

FORD

LTD by Ford 2-Door Hardtop, 4-Door Hardtop & 4-Door Sedan
 Ford XL 2-Door Hardtop & Convertible
 Galaxie 500 2-Door Hardtop, 4-Door Hardtop, Convertible & 4-Door Sedan
 Custom 500 2-Door Sedan & 4-Door Sedan
 Custom 2-Door Sedan & 4-Door Sedan
 Ford Wagons Country Squire, Country Squire with Dual-Facing Rear Seats, Country Sedan, Country Sedan with Dual-Facing Rear Seats & Ranch Wagon

THUNDERBIRD

Thunderbird Four-Door Landau
 Thunderbird Two-Door Landau
 Thunderbird Two-Door Hardtop

FAIRLANE

Fairlane GT & GTA 2-Door Hardtop & Convertible
 Fairlane 500/XL 2-Door Hardtop & Convertible, Club Coupe & 4-Door Sedan
 Fairlane 500 2-Door Hardtop, Convertible, Club Coupe & 4-Door Sedan
 Fairlane Fairlane Wagons Fairlane Squire, Fairlane 500 Wagon & Fairlane Wagon

FALCON

Futura Sports Coupe, Club Coupe & 4-Door Sedan
 Falcon Club Coupe & 4-Door Sedan
 Falcon Wagons Falcon Futura Wagon & Falcon Wagon
 Club Wagons Club Wagon
 Custom Club Wagon
 Deluxe Club Wagon

MUSTANG

Mustang Fastback 2+2
 Mustang Convertible
 Mustang Hardtop

TRAILER TOWING

For all the information about trailer towing with '67 Fords, see your Ford Dealer. He can advise you on the special equipment recommended for towing trailers of all types and sizes.

YOU'RE AHEAD WITH FORD'S TWICE-A-YEAR MAINTENANCE

'67 Fords are designed to go 6,000 miles (or 6 months) between oil changes and minor chassis lubrications; 36,000 miles (or 3 years,* whichever comes first) between major chassis lubes. Other '67 Ford service-savers include: 36,000 mile (or 2-year) engine coolant-antifreeze, self-adjusting brakes, long-life Sta-Ful Battery, shielded alternator, rust- and corrosion-resistant aluminum muffler and galvanized underbody parts. Every new car built by Ford needs so little service it's just good sense to see that it gets the best—at your Ford Dealer's. His factory-trained mechanics and special tools add up to the greatest service combination available for your Ford.

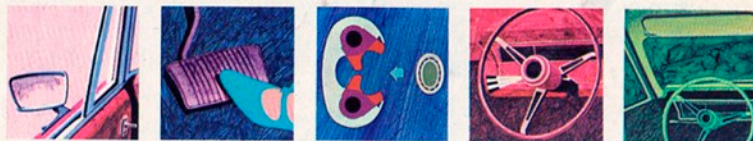
*Except Falcon Club Wagons each 6,000 miles or 6 mos., Thunderbird each 100,000 miles or 3 years

The specifications contained herein were in effect at the time this catalogue was approved for printing. However, because of continuing product improvements and refinements Ford Motor Company of Canada, Limited reserves the right to change specifications or design at any time, or discontinue models without notice and without incurring obligation. Mileage figures quoted herein refer to normal driving conditions.

FORD MOTOR COMPANY 1967 SAFETY FEATURES... STANDARD

Ever since there have been Fords on the Canadian Road, the safety of the people who drive and ride in them has been a primary concern of thousands of people at Ford Motor Company, driving millions of miles on the test track, working millions of man-hours in the laboratory. Some of the latest results of their work are seen in the '67 standard safety features listed here.

These standard equipment safety features help reduce the likelihood of injury in case of an accident, but you can accomplish the most important job of all—preventing an accident. By obeying traffic laws at all times and developing alert, defensive driving habits, you can best protect yourself and your family against unsafe conditions on the road.



Remote-Control Outside Rearview Mirror. Provides clear view of approaching traffic and makes it easy to set the mirror at the most desirable angle. Without lowering the window, you can quickly aim the mirror by simply moving the inside fingertip control mounted on the door.

Dual Hydraulic Brake System with Warning Light. Dual master cylinder plus separate lines to front and rear brakes provides extra protection. In event one line is damaged, other remains to provide partial braking while red light on instrument panel warns driver of need for service.

Safety-Yoke Door Latches — the famous Ford design — are strong, tight-gripping to help keep doors closed in the event of impact. Positive Door Lock Buttons must be raised before door handles will operate and doors can be opened as an added precaution.

Impact-Absorbing Steering Wheel with Deep-Padded Hub adds importantly to driver's safety. On left side of steering column are Turn Indicators with Lane-Changing Signal to indicate movements from one lane to another. On right side of column is 4-Way Emergency Flasher switch.

Thick-Laminate Safety Plate Glass Windshield offers greater strength and protection. New Padded Windshield Pillars on either side, Padded Sun Visors overhead and Padded Instrument Panel, combine to provide added protection for driver and passengers.

Standard Equipment Safety Features include: Deluxe Front and Rear Seat Belts with Reminder Light and Front Retractors
 Non-Glare, Day/Night Inside Mirror with Flexible Backing Break-Away or Double-Pivot Inside Mirror-Arms
 Windshield Washers 2-Speed or Variable Speed Windshield Wipers Backup Lights Self-Adjusting Breaks.

(Certain exceptions in Falcon Club Wagons standard safety features.)

You're ahead in a '67 FORD all the way!



MUSTANG • FALCON • FAIRLANE • FORD • THUNDERBIRD

LITHO IN CANADA