

'74 Ford Mustang II

HARDTOP • GHIA • 2+2 • MACH 1



Every once in a long while, the right new car comes along at exactly the right time. We think Mustang II is that kind of car today.

Start with size. Mustang II is a foot and a half shorter than last year. It has all the economy and agility you'd expect from a small car. It's roomy and comfortable inside. It's fun to drive. And it comes with touches of luxury you'd be hard pressed to find in most cars. Regardless of size. And regardless of price.

Take a closer look. The body lines flow gracefully from front to rear. Unbroken by ordinary welds or unsightly gaps at door openings. The finish is exceptionally smooth and deep. And even the bright trim is first class with a high luster and joints that are almost invisible. The overall impression is that of unique and careful craftsmanship.

As luxurious and handcrafted as Mustang II appears outside, it is equally matched within. The first

class treatment starts with thick, contoured vinyl bucket seats. So comfortable you'll feel you're sitting in them rather than on them. In fact, you're actually surrounded by soft, rich vinyl. And cut-pile carpeting that runs wall to wall and up the doorpanels. And note the instrument panel with hurred walnut tone trim, tachometer and separate fuel, ammeter and temperature gauges.

The richness extends to the ride as well. Carefully designed front and

rear suspensions make liberal use of rubber. And a new isolated front sub-frame, separated from the body by massive rubber bumpers, absorbs and dissipates most shock and vibration before it reaches the body.

The standard power team is a new 2.3 Liter overhead-cam engine and floor-mounted 4-speed manual transmission with a glassy smooth feel. For still more power choose the new 2.8 Liter V-6 engine with SelectShift Cruise-O-Matic. Rack-

and-pinion steering, manual front disc brakes together with the all-new suspension work to give you the fun and feel of the great road cars.

The 1974 Mustang II comes in four distinctive models. Choose from the Hardtop, Ghia or 3-Door 2-2 and Mach 1 models. And a long list of options, listed on pages 16 thru 19, help you make Mustang II just the car you want it to be. From super luxury to super fun.

NOTE: See Notable Standard Features on page 11. Other items shown are optional.

NOTE: For your convenience, Mustang II colors include codes - example: Bright Red (Code 2B). Your Ford Dealer will be pleased to show you color chips and actual swatches of vinyl roof and interior trim colors.

FORD MUSTANG II. The right car at the right time.



Mustang II Ghia. One of four exciting new models in a whole new class of small cars... First Class... for 1974. Pearl White (Code 9C).

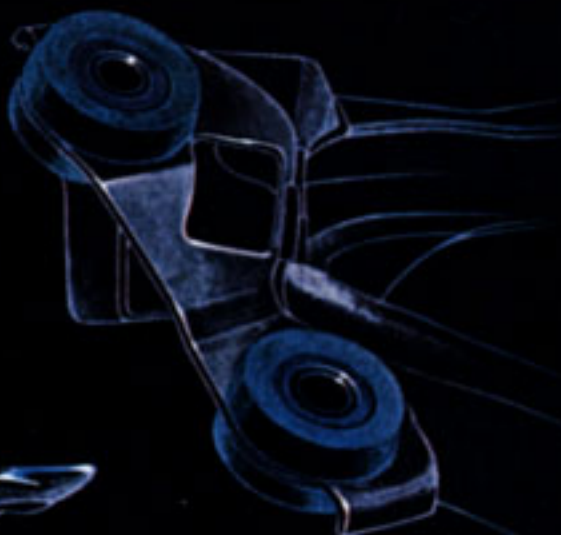
Bumpers that act like bumpers but still fit in with the design of the car. They're impact resistant, front and rear, and utilize a new principle called the Poly-Gel Mitigator System. And they're coated with a substance called urethane to offer greater protection and blend neatly with the car's styling.



Turn on a dime. Rack-and-pinion steering is standard. Makes cornering and parking a breeze. Rubber mounting bushings dampen road shocks. An optional power steering assist with 19 to 1 ratio affords minimum effort and fast response.



Something new in smoothness. We call it an iso-clamp and it actually sandwiches the rear leaf spring between thick layers of rubber to eliminate metal-to-metal contact and give a smoother ride. A lot of other better ideas like staggered rear shocks help deliver a smooth boulevard ride.



Vibration is out, smoothness is in. A new isolated front sub-frame utilizes thick rubber 'biscuits' to separate both road and engine vibrations from the passenger compartment. Tuned front and rear springs smooth out the ride still more.

A real go-together powertrain. We've come up with a honey in our new 2.3 Liter, overhead-cam, four-cylinder engine and four-speed manual gear box. Smooth and snappy. For still more power, opt for the 2.8 Liter V-6 with SelectShift Cruise-O-Matic. Engines run on regular gas.



Hardtop with formal roofline and smooth unbroken lines shows the classic side of Mustang II. Dark Yellow Green Metallic (Code 4V).

Hardtop.

Some like it classic. And that is the look of our 4-passenger Hardtop. A formal roofline complements the traditional Mustang long-hood, shortdeck design. From the bright oval grille, along the sculptured body, to the massive 3-color taillights, this car is distinctively Mustang. But definitely new. With new levels of luxury and quality.

The new look of elegance continues inside with plush, contoured all-vinyl bucket seats. The new low-back style with full-width headrest and comfortable U-shape seat bolsters. There is thick cut-pile carpeting that runs up the sides

of the doors, and deluxe door panels in soft vinyl with smart European armrests and built-in pull handles. The instrument panel comes with 6000 rpm tachometer, fuel, ammeter and temperature gauges and a sporty 2-spoke steering wheel. It's all set off with a rich burlled walnut tone cluster panel. And it's all standard.

The new Mustang II Hardtop moves as good as it looks thanks to the snappy 2.3 Liter engine, and a wide range of standard features. For more action, check the full list of options, including the versatile fold-down rear seat, on pages 16-19.

We built Mustang II for people who don't want to give up luxury when they buy a small car. So in every Mustang II you get deep, individual seats with full-width headrests, all-vinyl trim, thick cut-pile carpeting and an unusually well-instrumented dash including tachometer.

NOTABLE STANDARD FEATURES —

Hardtop

Functional: 2.3 Liter, 4-cylinder engine
 Fully synchronized 4-speed floor-mounted transmission
 Rack-and-pinion steering
 Manual front disc brakes
 3-color taillights
 Tachometer
 Fuel, ammeter and temperature gauges
 Black-wall tires
 Impact Resistant Front and Rear Bumper Systems
 Front Retractable Lap/Shoulder Belts with Starter Interlock
 Isolated front sub-frame
 All Ford Motor Company Lifeguard Design Safety Features listed on page 20.

Appearance and Comfort: Color-keyed urethane-coated front and rear bumpers
 Bright windshield, backlite, drip, belt and center pillar moldings
 Front and rear wheel lip moldings
 Full wheel covers
 Low-back vinyl bucket seats with full-width headrests
 Color-keyed cut-pile carpeting
 Soft vinyl door trim, European-type armrests and integral pull handles
 Soft vinyl headlining
 Deluxe instrument panel.

MEASUREMENTS — 2-Door Models

Wheelbase	96.2"
Overall length	175.0"
Overall height	49.9"
Overall width	70.2"
Front tread	55.5"
Rear tread	55.6"
Curb weight (lb.) (Hardtop)	2718
FRONT COMPARTMENT	
Effective headroom	37.3"
Effective legroom	41.8"
Shoulder room	52.5"
Hip room	52.1"
REAR COMPARTMENT	
Effective headroom	36.4"
Effective legroom	27.6"
Shoulder room	51.4"
Hip room	42.8"
Luggage capacity (cu. ft.)	6.7
Fuel capacity (gal.) and grade	13, Reg.
Seating capacity	4 pass.

Note: See Notable Standard Features above. Other items shown are optional.

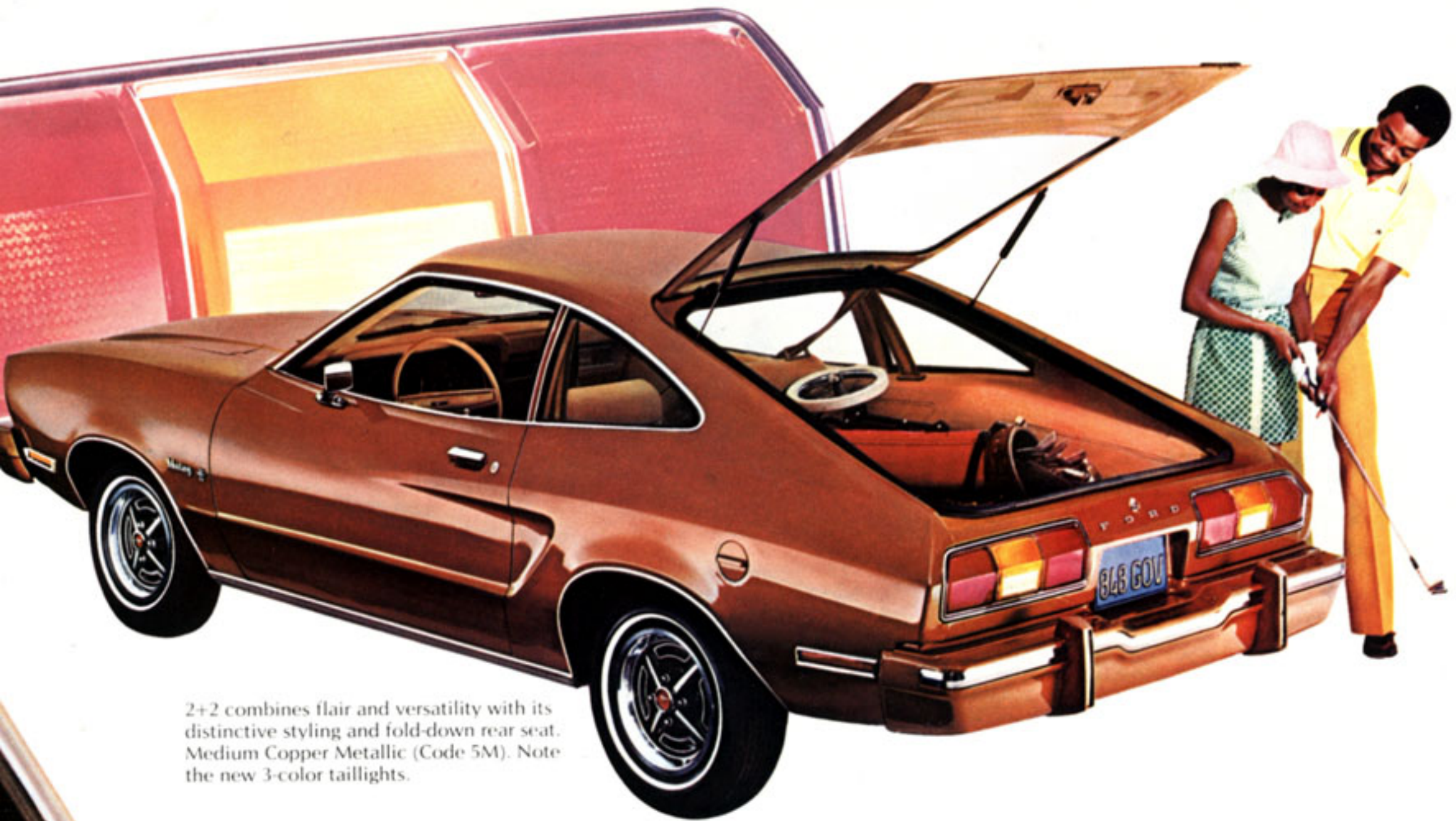
Note: See Color Code reference on page 3.



New seat and shoulder belt system encourages you to buckle up. Still allows freedom of movement. Light Tan (Code AU).

Ford Mustang II. A new class of small car: First Class.





2+2 combines flair and versatility with its distinctive styling and fold-down rear seat. Medium Copper Metallic (Code 5M). Note the new 3-color taillights.

3-Door 2+2.

Don't let the look of luxury fool you. Mustang II is a fun car. And a super fun car when you choose our 3-Door 2+2. The one with the big rear door that swings up out of the way for easy loading. It comes with two plush bucket seats up front and a rear seat that folds down to provide 27 cu. ft. of storage space. Enough to hold anything from golf clubs to skin diving gear.

The 3-doors have their own distinctive

look. The rooflines sweep back quickly in true fastback form. The low profile with wide stance suggests action. And Mustang II is happy to deliver. With plenty of go-ahead power, quick and nimble handling with a smooth, comfortable ride.

Exterior touches include styled steel wheels, color-keyed urethane-coated bumpers, thin European-style trim moldings and the traditional Mustang grille.

MEASUREMENTS—3-Door Models

Wheelbase	96.2"
Overall length	175.0"
Overall height	49.6"
Overall width	70.2"
Front tread	55.5"
Rear tread	55.6"
Curb weight (lb.) (2+2)	2797

FRONT COMPARTMENT

Effective headroom	37.0"
Effective legroom	41.8"
Shoulder room	52.5"
Hip room	52.1"

REAR COMPARTMENT

Effective headroom	34.8"
Effective legroom	27.6"
Shoulder room	51.4"
Hip room	42.8"
Fuel Capacity (gal.) and grade	13, Reg.
Seating capacity	4 passengers (2 with rear seat down)

NOTABLE STANDARD FEATURES— 3-Door 2+2

Functional: 2.3 Liter, 4-cylinder engine
 Fully synchronized 4-speed floor-mounted transmission
 Rack-and-pinion steering
 Manual front disc brakes
 3-color taillights
 Tachometer
 Fuel, ammeter and temperature gauges
 Fold-down rear seat
 Full up-swinging liftgate
 Black sidewall tires
 Impact Resistant Front and Rear Bumper Systems
 Front Retractable Lap/Shoulder Belts with Starter Interlock
 Isolated front sub-frame
 All Ford Motor Company Lifeguard Design Safety Features listed on page 20.

Appearance and Comfort: Color-keyed urethane-coated front and rear bumpers
 Bright windshield, backlite, drip, belt and center pillar moldings
 Front and rear wheel lip moldings
 Styled steel wheels
 Low-back vinyl bucket seats with full-width headrests
 Color-keyed cut-pile carpeting
 Soft vinyl door trim panels, European-type armrests and integral pull handles
 Soft vinyl headlining
 Deluxe instrument panel.



Rear seat on the 3-Door 2+2 folds down to hold 27 cu. ft. of cargo. It's optional on Hardtops. Light Tan (Code AU).

Note: See Notable Standard Features above. Other items shown are optional. **Note:** See Color Code reference on page 3.

If you've long admired the subtle splendor of the great personal luxury cars, Mustang II Ghia might well be your car. It's small — over eighteen inches shorter than last year's model. With distinctive touches wherever you look. In the smooth luxury vinyl roof with padded applique and Ghia script.

You'll see it in the dual remote control color-keyed mirrors. The vinyl insert bodyside molding. And subtle pin stripes around the front

fenders, hood and back panel. Steel-belted radial ply white sidewall tires and spoke-style wheel covers finish off the stylish exterior.

As you slip inside, the luxury comes on stronger with your choice of rich "super-soft" vinyl or Westminster cloth bucket seats, shown on pages 12 and 19. Deluxe door trim with burl walnut tone accents. Thick 25 oz. cut-pile carpeting wall-to-wall. And a Super Sound Package that makes the ride even quieter.

As an added touch of class, the Ghia comes with a digital clock that ticks off the hours, minutes and seconds numerically.

To further personalize your Ghia, Mustang II offers a broad range of options including AM/FM stereo radio, SelectAire Conditioner, power steering, SelectShift Cruise-O-Matic, Sunroof, fold-down rear seat, leather-wrapped steering wheel, console, and many others listed on pages 16 through 19.

NOTABLE STANDARD FEATURES — Ghia

Functional: 2.3 Liter, 4-cylinder engine Fully synchronized 4-speed floor-mounted transmission Rack-and-pinion steering Manual front disc brakes 3-color taillights Tachometer Fuel, ammeter and temperature gauges Dual remote control color-keyed mirrors Steel-belted radial ply white sidewall tires Impact Resistant Front and Rear

Bumper Systems Front Outboard Retractable Lap Shoulder Belts with Starter Interlock Isolated front sub-frame All Ford Motor Company Lifeguard Design Safety Features listed on page 20.

Appearance and Comfort: Color-keyed urethane-coated front and rear bumpers Luxury vinyl roof Bright windshield, backlite, drip, belt and center pillar moldings Spoke-style wheel covers Front and rear wheel

lip moldings Low-back "super-soft" vinyl or Westminster cloth bucket seats with full-width headrests Color-keyed cut-pile carpeting Digital clock Soft vinyl door trim panels with woodtone inserts, European-type armrests and integral pull handles Soft vinyl headlining Deluxe instrument panel Reversible keys, "keyless" locking.

MEASUREMENTS Refer to Hardtop model on page 5.

NOTE: See Notable Standard Features above. Other items shown are optional. NOTE: See Color Code reference on page 3.

Ford Mustang II Ghia. A new word for small car luxury.



Ghia makes a plush car even more so with vinyl roof, bodyside moldings, dual color-keyed remote control mirrors, pin stripes and steel-belted whitewalls, all standard. Medium Bright Blue Metallic (Code 3E).

Mustang II Ghia sports one of the softest, plush interiors around. The rich bucket seats are deeply padded for comfort you'll appreciate and you have a choice of new Westminster cloth (shown below) or "super-soft" vinyl (shown on page 19). Both are styled with a sporty deep-button accent-strap design and full-width headrests. You have a wide choice of colors. Seven in "super-soft" vinyl, five in cloth.

High-style door panels complement the seats with soft padding that runs

over the top of the door. A burlled walnut tone applique with surrounding accent color, European-type armrests with integral pull handles together with a courtesy light and reflector match luxury with convenience.

Thick cut-pile carpeting, so long you can actually grasp it between your fingers, covers the front and rear floors and runs up the lower door panels. And as the crowning touch, a unique digital clock tells time right down to the second. **Note:** See Color Code reference on page 3.



How plush can one little car get? About as plush as possible with the optional Picardy Velour cloth interior. It has the rich, subtle look of real velvet. And as you run your fingers over the soft, dense nap, you'll realize that this high-style material is as fine a quality as it looks.

On the practical side, the Picardy Velour is 70% nylon. It's exceptionally durable, easy to clean and will stay new looking for a long time. Because of the velvet-like surface, velour is comfortable in both warm and cold weather.

The optional Picardy Velour cloth is color-keyed to the vinyl of the door and instrument panels and headliner. And its rich color helps bring out the beauty of the burlled walnut tone applique throughout the interior.

Like all Mustang II Ghia interiors, the optional velour comes with color-keyed 25 oz. carpeting, resilient padding on the seats and door panels, deluxe door and quarter panel trim and digital clock. **Note:** See Notable Standard Features on page 11. Other items shown are optional.

The smart Ghia interiors...with refinements you never expected.

Ghia interior offers a choice of Westminster cloth (below) or "super-soft" vinyl (page 19) as standard. Medium Blue (Code DB).



For the last word in luxury, choose the optional Ghia Picardy Velour interior. Dark Red (Code CD).



Mach 1



The bright oval grille blends smoothly into the distinctive styling and trim of the exciting Mach 1. Bright Red (Code 2B). Whitewalls optional.

Ford Mustang II Mach 1. The fun way to go First Class.

One look delivers the message. A message of excitement, performance and fun. The styling sets the tone. With sporty 3-door design, styled steel wheels with trim rings and dual color-keyed remote controlled mirrors. Black paint treatment at the lower bodysides and steel-belted radials with raised white letters label Mach 1 as a car of action. The Mustang II tachometer and separate ammeter, fuel and temperature gauges help you keep a ready eye on the engine. Contoured vinyl bucket seats with full-width headrests and sporty European-type armrests set the stage for action. And a smooth shifting 4-speed floor-mounted gearbox together with a new 2.8 Liter V-6 engine provide a power team to really move out ahead.

On the straightaway and through the hairpins, Mach 1 handles like it looks. Smooth. New rack-and-pinion steering (the kind expensive road cars use) helps glide it through the turns. The new isolated front sub-frame and the entire suspension system work together to give easy handling, positive control and a smooth ride.

Mustang II offers a broad list of options. For looks you can choose the sporty leather-wrapped steering wheel, bright electric paints, and a Luxury Interior Group.

For ride and handling, go with the competition suspension, power brakes or Rallye Package. See pages 16 through 19 for a complete list of options. And see the exciting Mach 1 for the driving experience of 1974.

NOTABLE STANDARD FEATURES—Mach 1

Functional: 2.8 Liter V-6 engine □ Fully synchronized 4-speed floor-mounted manual transmission □ Rack-and-pinion steering □ Manual front disc brakes □ 3-color taillights □ Tachometer □ Fuel, ammeter and temperature gauges □ Dual remote control color-keyed mirrors □ Fold-down rear seat □ Steel-belted radial ply raised white letter tires □ Impact Resistant Front and Rear Bumper Systems □ Front Retractable Lap/Shoulder Belts with Starter Interlock □ Isolated front sub-frame □ All Ford Motor Company Life-guard Design Safety Features on page 20.

Note: See Notable Standard Features above. Other items shown are optional.

Appearance and Comfort:

Color-keyed, urethane-coated front and rear bumpers □ Bright windshield, backlite, drip, belt and center pillar moldings □ Styled steel wheels with chrome trim rings □ Black lower bodyside paint treatment □ Low-back bucket seats with full-width headrests □ Color-keyed cut-pile carpeting □ Vinyl door trim panels with European-type armrests and integral pull handles □ Soft vinyl headlining □ Deluxe instrument panel □ Reversible keys, "keyless" locking.

MEASUREMENTS—Refer to 3-Door models on page 8.

Note: See Color Code reference on page 3.



The dramatic 3-door styling of the Mach 1 is accented by the sporty black lower bodyside paint all around and bold Mach 1 lettering. Medium Lime Yellow (Code 4W).

Ford Mustang II Options.

Design your car to suit your spirit.

Tinted Glass. Reduces glare from any direction. Recommended with SelectAire Conditioner.

Glamour Paints. Brand-new colors with a deep rich luster. Available in Green Glow (4T), Tan Glow (5U), and Ginger Glow (5J).

Super Sound Package. Sound absorbers help isolate the passenger compartment from engine and road noises. Standard on Ghia and with Luxury Interior Group.

2.8 Liter V-6 Engine. Compact, smooth, powerful. Comes with dual exhaust. Runs on regular fuel. Compression ratio 8.2 to 1. Standard on Mach 1.

Heavy-Duty Battery. 53 ampere. More starting power for severe service applications. Standard with 2.8 Liter engine.

Power Rack-and-Pinion Steering. 19 to 1 ratio. Gives quick, precise, response in any situation.

Power Front Disc Brakes. Helps give straight, sure stops. Even on wet pavement.

Wheel Options. Take your choice, sporty forged aluminum or styled steel. (Styled steel standard 2+2, standard with trim rings Mach 1 and with Rallye Package).



▲ **Body Side Molding.** Bright metal with color-keyed vinyl insert. Helps protect the finish of door and bodyside. Standard on Ghia.

Rocker Panel Molding. Bright metal for extra sparkle and flair. Not available on Ghia or Mach 1.



▲ **Dual Color-Keyed Mirrors.** Smart styling. Both are remote controlled from driver's side. Standard on Ghia and Mach 1.

Convenience Group. Includes outside left-hand and right-hand remote control side mirrors, vanity visor mirrors, inside day/night mirror, parking brake boot with ash tray and deluxe seat belts.

Protection Group. Comes with door edge guards, front floor mats, spare tire lock, license plate frames and locking gas cap. (Door edge guards not included on Mach 1)

Flipper Rear Quarter Windows. 3-door models. Easy to open. Easy to close. Positive locking, tight sealing.



Sunroof. 2-door models. Sliding panel overhead opens and closes easily with a turn of a handle.

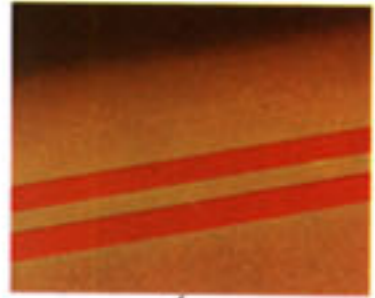
Vinyl Roof. Luxurious textured design. Applique at rear pillars. Available in Black, White, Medium Blue, Avocado, Tan, and Silver. Standard on Ghia.

Heated Backlite. Thin conductive strips warm up backlite to improve visibility.

Rallye Package. Comes with Traction-Lok differential, steel-belted radial ply raised white letter tires, extra cooling package, competition suspension, remote control dual side mirrors, styled steel wheels with trim rings, sport exhaust with bright tips, digital clock and leather wrapped steering wheel. Requires 2.8 Liter engine. Not available on Ghia.

Competition Suspension. Includes heavy-duty springs, manually adjustable shock absorbers to better fit road conditions, and rear stabilizer bar.

Accent Pin Stripes. Subtle striping around hood, front fenders and rear panel adds a touch of luxury. Standard on Ghia. ▼



Bumper Guards. Front and rear, urethane-coated and color-keyed to bumpers. Include vertical stainless steel rub strip.

Traction-Lok Differential. Provides additional rear wheel traction in mud and snow. Standard 3.55 to 1 ratio.

Steel-Belted Radial Ply Tires. Tested to give the average driver 40,000 miles of tread life in normal driving conditions. ▶

White Sidewall Tires. Available in several types and sizes. Standard on Ghia.

Blackwall Tires with raised white letters. Wide oval steel-belted radial ply construction. Standard on Mach 1.



Luggage Compartment Trim. Available on 2-door models, it features cut-pile carpeting on floor and rear trim panels.

Interior options covered on pages 18 and 19.

More Mustang II Options. For still more luxury and convenience.

SelectAir Conditioner. Cools, warms, ventilates and defrosts for year-round comfort. New system provides fast response to temperature control changes.

Light Group. Includes under hood, glove box, map, ash tray and instrument panel courtesy lamps. Trunk light (hardtops) and third door courtesy light (3-doors). Also parking brakes, door ajar and headlamps "on" warning light and buzzer.

AM/FM Stereo Radio with Tape Player. Superb sound with three opportunities for good listening. Twin speakers included.

AM/FM Stereo Radio. All transistorized. Twin speakers for true stereo sound.

AM/FM Monaural Radio. A fine, rich sound with twin front-seat speakers for easy listening.

AM Radio. Easy on the ears, easy on the budget.

Our goal: No Unhappy Owners

The people of Ford Motor Company and Ford Dealers have dedicated themselves to an ambitious goal—no unhappy owners. This means that when you select a Mustang II, you get a product engineered and built to the highest quality standards. You get the full attention of a dealer organization whose primary interest is your satisfaction. This is a deep and personal interest that continues as long as you own your car. We listen to our owners—and we will do everything possible to make sure you get all the good things planned and built into your '74 Mustang II.



▲ **Anti-Theft Alarm System.** Actuates horn to attract attention and deter theft when locked car is tampered with. Includes lockable inside hood latch.



▲ **Leather Wrapped Steering Wheel.** Soft leather wrapping all around the rim. Sewn together with a handsome stitch. Combines a smooth touch with a firm grip.

◀ **Fold-Down Rear Seat.** Folds flat to form a carpeted deck and interior access to truck. Gives plenty of room for bulky items. Available on Hardtop and Ghia models. Standard on 2+2 and Mach 1 models.



▲ **SelectShift Cruise-O-Matic.** Shift manually or automatically with this smooth 3-speed transmission. Features woodtone shift lever handle.

Console. Soft exterior. Color-keyed with burl walnut accent. Features roomy compartment for maps, sunglasses, etc. SelectShift Cruise-O-Matic optional.

Deluxe Seat Belts. Color-keyed with deluxe buckles, add a touch of elegance. Standard on Ghia and with Luxury Interior and Convenience Groups.

Automatic Seat Back Release. Disengages seat back latch when door opens. Very handy when holding packages.

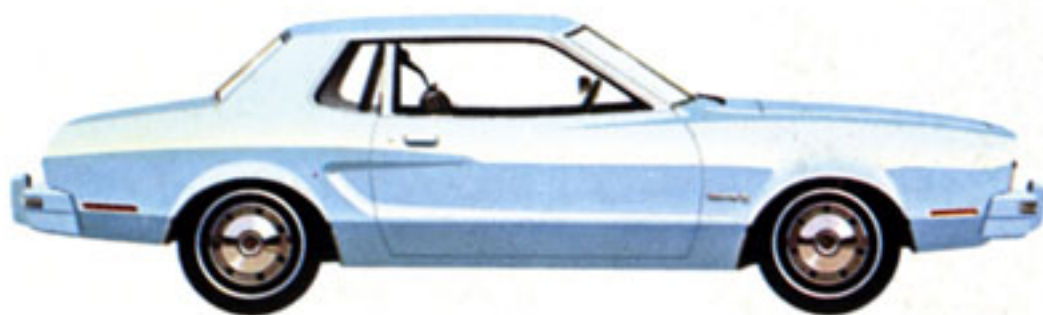
Digital Clock. The last word in luxury and convenience. Mounted on instrument panel, it ticks off the hours, minutes and seconds numerically, rather than by dial. Standard on Ghia and Rallye Package.

Luxury Interior Group. Adds luster with "super-soft" vinyl seats (shown below), deluxe door trim with large armrest and burl walnut accent, deluxe quarter trim, 25 oz. cut-pile carpeting, Super Sound Package, large parking brake boot, door courtesy lamps and rear ash tray. (All items above are standard on Ghia.) Light Silver (Code BP).



Note: See Color Code reference on page 3.

FORD MUSTANG II CAR SELECTOR



Mustang II Hardtop. Light Blue (Code 3B).



Mustang II Ghia. Ginger Glow (Code 5J).



Mustang II 3-Door 2+2. Medium Yellow Gold (Code 6C).



Mustang II Mach 1. Dark Red (Code 2M).

Ford cares about your safety

Ford really cares about your safety and those you care about. You'll find this reflected in each new 1974 Mustang II which includes these FORD MOTOR COMPANY LIFEGUARD DESIGN SAFETY FEATURES, standard: Safety-designed front end structure • Safety-designed roof structure • Steel guard rails in side doors • Double-yoke safety door latches and safety hinges • Impact-resistant front and rear bumper systems • Safety rim wheels and load-rated tires • Dual hydraulic brake system with warning light • Corrosion-resistant brake lines • Integral lap and shoulder belts with individual lap and shoulder belt retractors and starter interlock for front outboard occupants • Positive reminder warning light and buzzer for all front seat occupants • Lap belts with mini buckles for center front and all rear seating positions with retractors for rear outboard occupants • Energy-absorbing steering column and steering wheel • Energy-absorbing armrests and safety-designed door handles • Energy-absorbing instrument panel with padding for right and center front passenger • Padded sun visors • Energy-absorbing front seat back tops with padding • Self-locking front seat backs on two-door vehicles • Safety-designed coat hooks • Safety-designed radio control knobs and push buttons (on all cars equipped with radios) • Head restraints or high back seats for front outboard occupants • Safety glove box latch (on all cars equipped with glove boxes) • Inside yield-away rearview mirror • Improved impact-absorbing laminated safety glass windshield • Turn indicators with lane-changing signal feature • Hazard warning flasher • Backup lights • Side marker lights • Parking lights coupled with headlamps • Two-speed or variable speed windshield wipers • Windshield washers • Outside rearview mirror, driver's side • Glare reduced instrument panel padding, windshield wiper arms, steering wheel hub, and windshield pillars • Uniform transmission shift quadrant (on all cars equipped with automatic transmission) • Locking steering column with warning buzzer • Non-reversing odometer.

Economy of Operation: All 1974 Mustang II's call for 36,000 miles, or 3 years (whichever comes first) between major chassis lubrications, 6,000 miles, or 4 months, between oil changes. Oil filter change initially at 6,000 miles or 4 months, and at 12,000 miles or 8-month intervals thereafter. Other economy features include: self-adjusting brakes, 2-year engine coolant-antifreeze, long-life Motorcraft Sta-Ful battery, corrosion-resistant aluminized muffler, zinc-coated underbody parts, use of regular gas, and more.

NOTES

All 1974 Mustang II engines are designed to operate on regular gasoline with octane rating of at least 91 (Research Method) when engine is adjusted to factory specifications.

Replacement Parts. Your 1974 Mustang II comes with factory-engineered Motorcraft battery, oil filter, shock absorbers; Autolite Powertip Spark Plugs and other Ford approved precision parts. For continued top performance, be sure to specify Motorcraft Parts and Autolite Powertip Spark Plugs whenever replacement is necessary.

All 1974 cars must meet Federal Emission Standards before sale. See your Ford Dealer for details.

Illustrations and information presented were correct when approved for printing. Ford Division reserves the right to discontinue or change at any time specifications or design without incurring obligations.

Some features shown or described are optional at extra cost. Most options are offered on all models.

Some options are required in combination with other options. Availability of some models or features described may be subject to a slight delay. Always consult your Ford Dealer for the latest, most complete information on models, features, prices and availability.

Your '74 Mustang II check list. Equip the model you want the way you want it.

MODELS

Hardtop Ghia 2+2 Mach 1

EXTERIOR COLORS

Pearl White (Code 9C) Bright Red (2B)
 Dark Red (2M) Silver Metallic (1G)
 Medium Bright Blue Metallic (3E) Light Blue (3B) Bright Blue (3N) Dark Yellow Green Metallic (4V) Bright Green Gold Metallic (4B) Medium Lime Yellow (4W) Saddle Bronze Metallic (5T) Medium Yellow Gold (6C) Medium Copper Metallic

(5M) Green Glow (4T)* Ginger Glow (5J)*
 Tan Glow (5U)* *Optional

INTERIOR TRIM SELECTIONS

Black Medium Blue Avocado Dark Red Light Silver Tan White

BETTER IDEA OPTION HIGHLIGHTS

SelectShift Cruise-O-Matic 2.8 Liter Engine SelectAire Conditioner Bumper Guards Digital Clock Convenience Group Tinted Glass Light Group Luxury Interior Group Dual Color-Keyed Remote

Control Mirrors Bodyside Molding Power Steering Power Front Disc Brakes Protection Group AM Radio Rallye Package Vinyl Roof Sunroof Steel-Belted Radial Ply Tires Glamour Paints Forged Aluminum Wheels Styled Steel Wheels with Trim Rings Competition Suspension.

The closer you look, the better we look

FORD MUSTANG II

FORD DIVISION

