

1982 DODGE **mirada**



Dodge Mirada... America's Driving Machine.

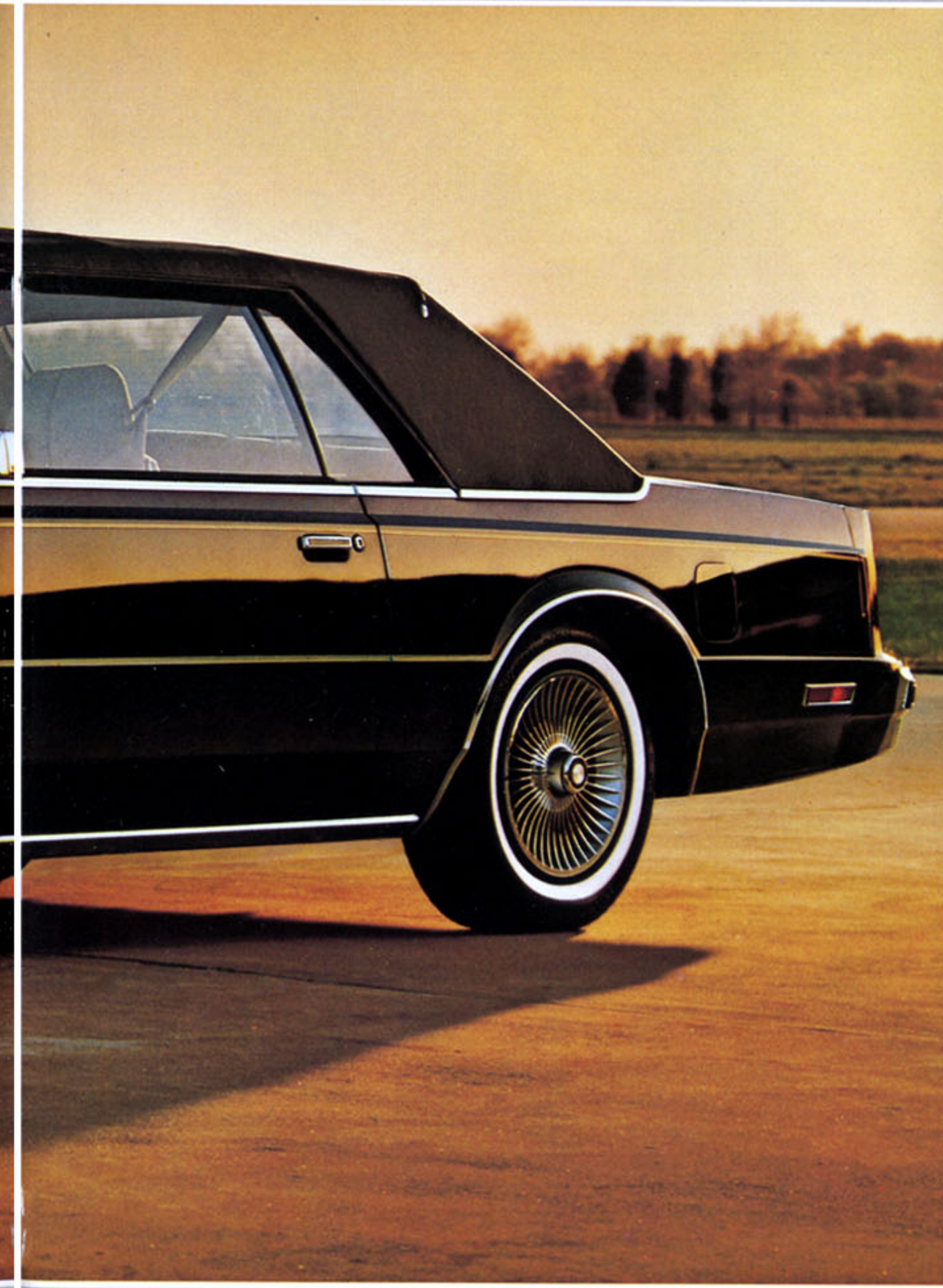
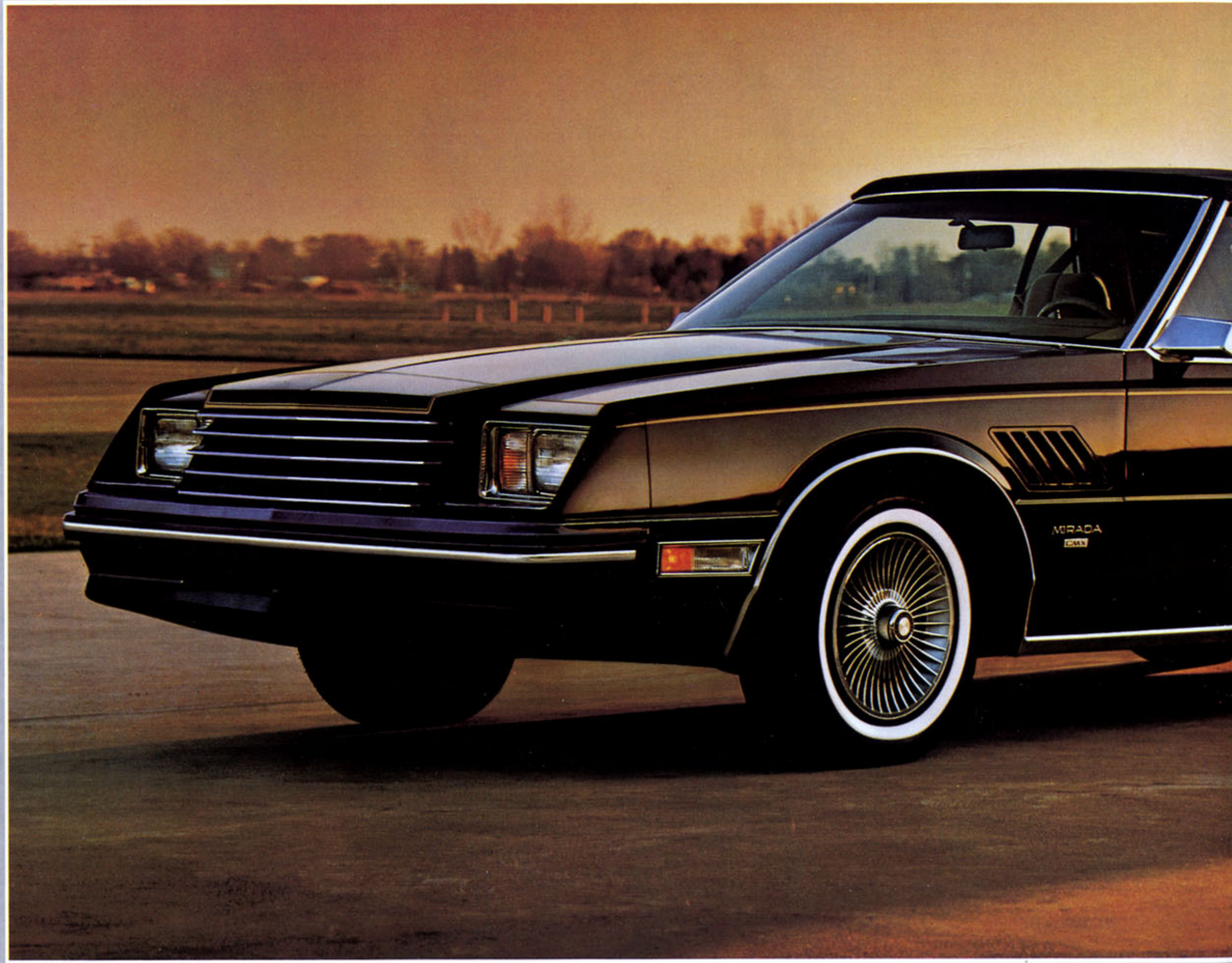
It's still a big country with long, wide roads stretching beyond the horizon. Roads that are best driven in a car that fires the imagination as easily as it covers the miles between cities and seas.

The 1982 Dodge Mirada is just such a car. An American road car that you'd never mistake for anything else. Its sleek profile slices through the wind. Yet inside, all is quiet... even at highway speeds. So you can more fully enjoy Mirada's many standard features.

The comfortable cloth-and-vinyl bucket seats. The handsome gauge-filled instrument panel. The color-keyed carpeting and deluxe seat belts.

This is a truly modern and sporty personal-sized automobile. So you expect the high level of standard equipment you find and the many luxury options you can add.

What you might not expect is Mirada's roomy interior. The spacious 16.7 cubic feet of trunk area. Or the big 18-gallon fuel tank that helps you enjoy what Mirada does best—making short work of long distances.



About this catalog. We have tried to make this catalog as complete as possible. And we hope you find it useful. However, since the time of printing, some of the information you'll find here may have been updated. Your dealer has details, and you should ask him for current information before ordering.

Some of the equipment shown or described throughout this catalog is available at extra cost.

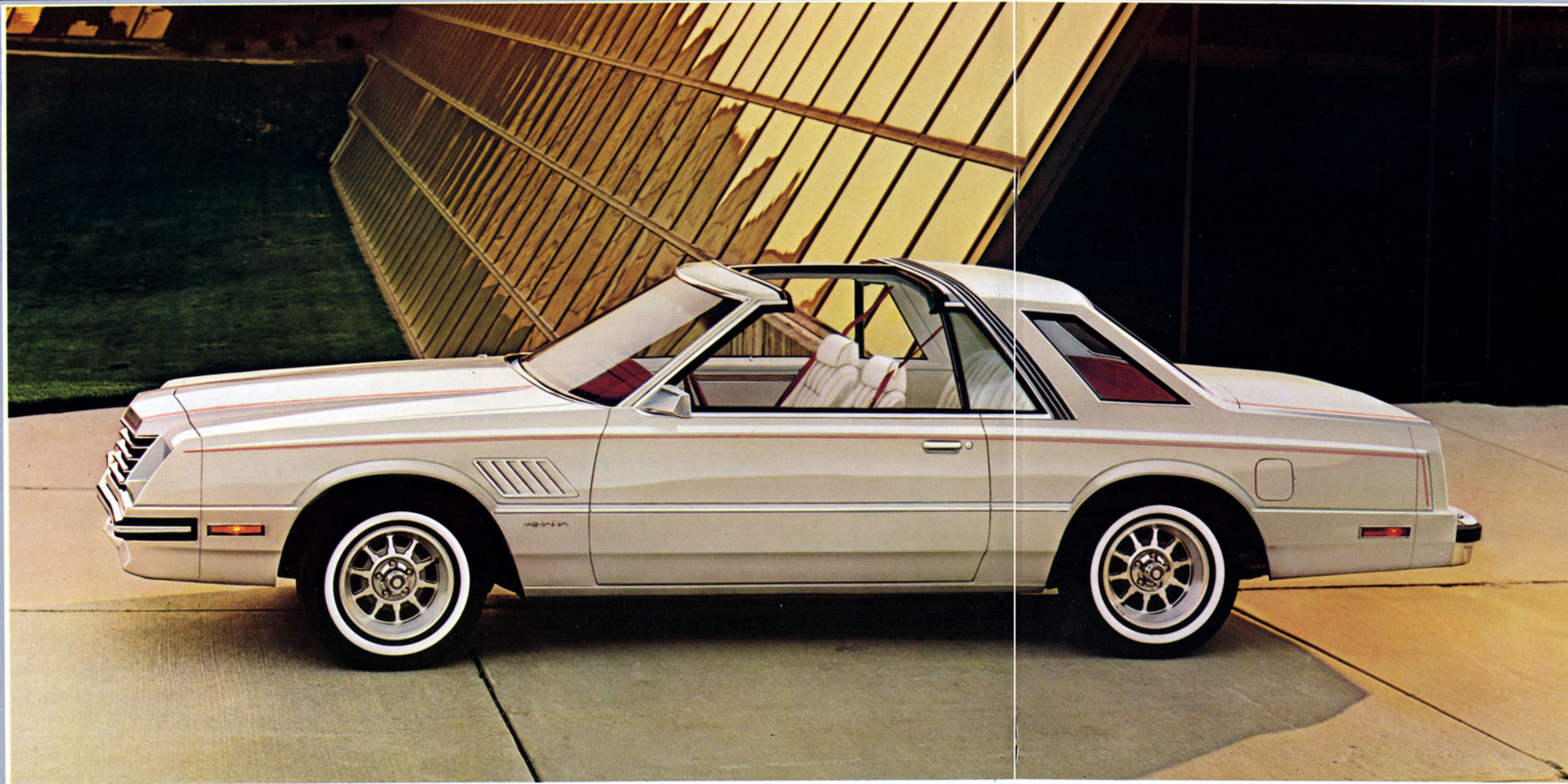
Mirada in Black with CMX Package, Including Cabriolet-Style Vinyl Roof.

Mirada's Standard Cloth-and-Vinyl High-Back Bucket Seats.

Mirada. It'll bring back the driver in you.

The responsiveness implied in every line of Mirada is no idle boast. Its sleek, shining unitized body rests on a refined midsize platform, while Chrysler's famed 3.7-liter Slant Six engine provides the cut and thrust of its driving style. A 5.2-liter V-8 is also available as an option for more performance. Whichever engine you choose, a three-speed automatic transmission is standard to translate that power into linear terms.

So head out to your favorite stretch of road. Enjoy the fresh air fun of Mirada's optional T-Bar roof (shown right). Feel the smooth surge of power as Mirada accelerates down the straight and into a turn, its torsion bar front suspension holding you on course, its glass-belted radial tires gripping the pavement, its power steering directing you through twists and turns. Until its power front disc and rear drum brakes put a safe stop to the action. All are standard. All help to make Mirada a car that will bring back the driver in you.



Mirada in Pearl White, With Optional T-Bar Roof.

Mirada's Optional Leather-and-Vinyl Bucket Seats.

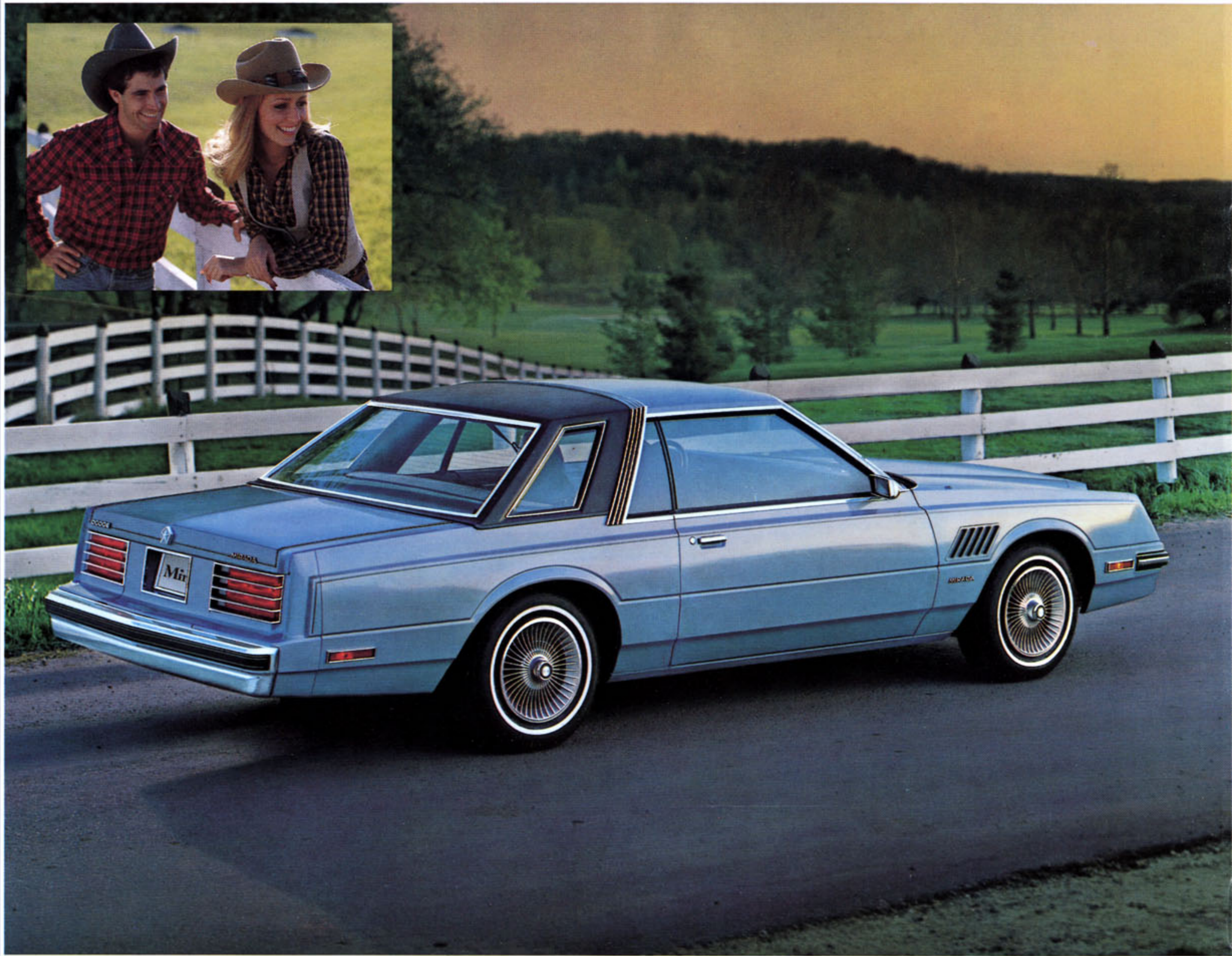
At Chrysler, Quality Is a Science.

Consider, for a moment, the materials used in Mirada's construction. The body, for the most part, is composed of galvanized sheet metal to protect against corrosion. And put through a seven-step dip-and-spray process to help lock out rust. Mirada's front end is made of soft, flexible plastic that wards off dents and scratches.

Inside, cut pile carpeting covers the floors of the front and rear passenger compartments as well as the rear shelf panel and the lower door panels. The seats are of a spring wire and foam design similar to that of quality furniture to give Mirada's driver and passengers comfort and support over many hours and many miles. The upholstery ranges from soft leather and durable vinyl to rich, textured cloth.

Check Mirada's every body panel and every piece of trim, inside and out. Chrysler does. Time and time again...all through the manufacturing process.

Our commitment to quality. It's your assurance that every Mirada is one very well-built car.



Mirada in Daystar Blue Metallic, Shown With Optional Vinyl Landau Roof.

Dodge Mirada Options

Pictured here are just a few of the many options available at extra cost on the 1982 Mirada. The addition of one or more of them can only add to your driving pleasure and could mean extra value for you at resale time.

Certain models, packages and options are subject to specific restrictions, requirements or late availability. Consult your dealer for current ordering information.

A. Mirada's Control Center (shown with standard luxury two-spoke steering wheel, optional AM/FM stereo with CB, and optional air conditioning)

B. Aluminum Road Wheels

C. Semi-Automatic Air Conditioning

D. Automatic Speed Control/Intermittent Wipers

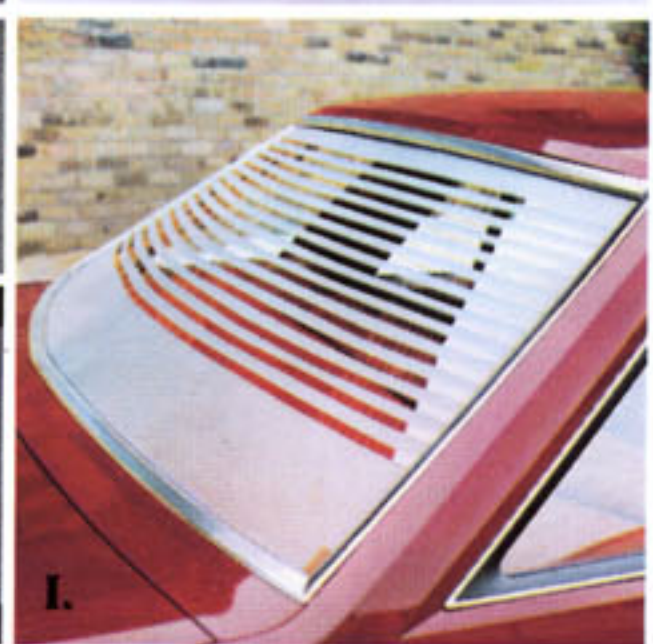
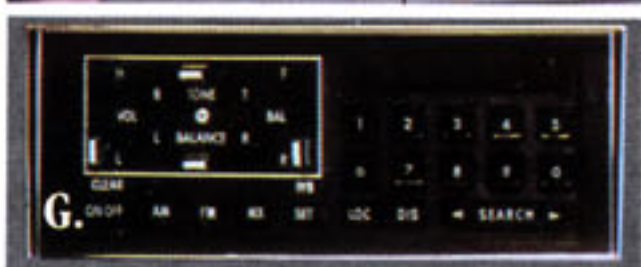
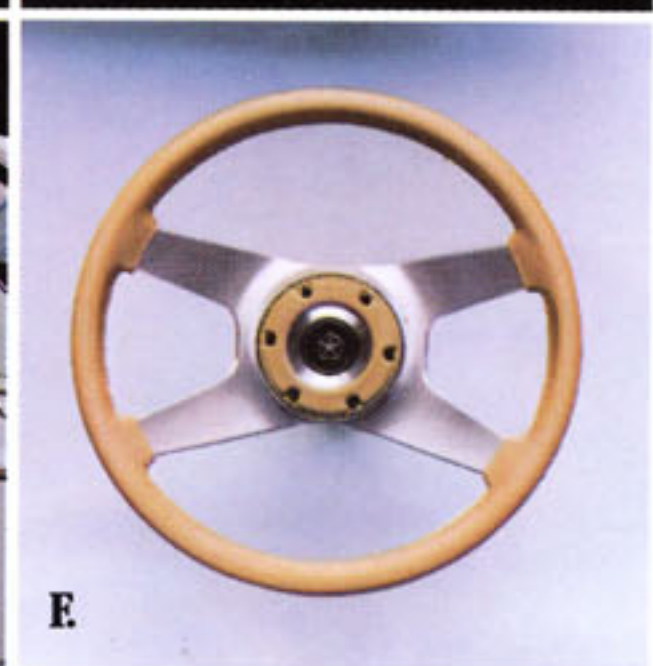
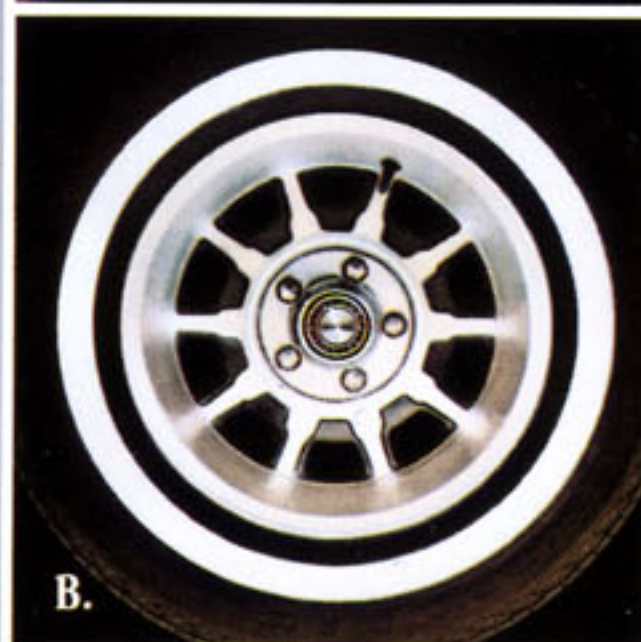
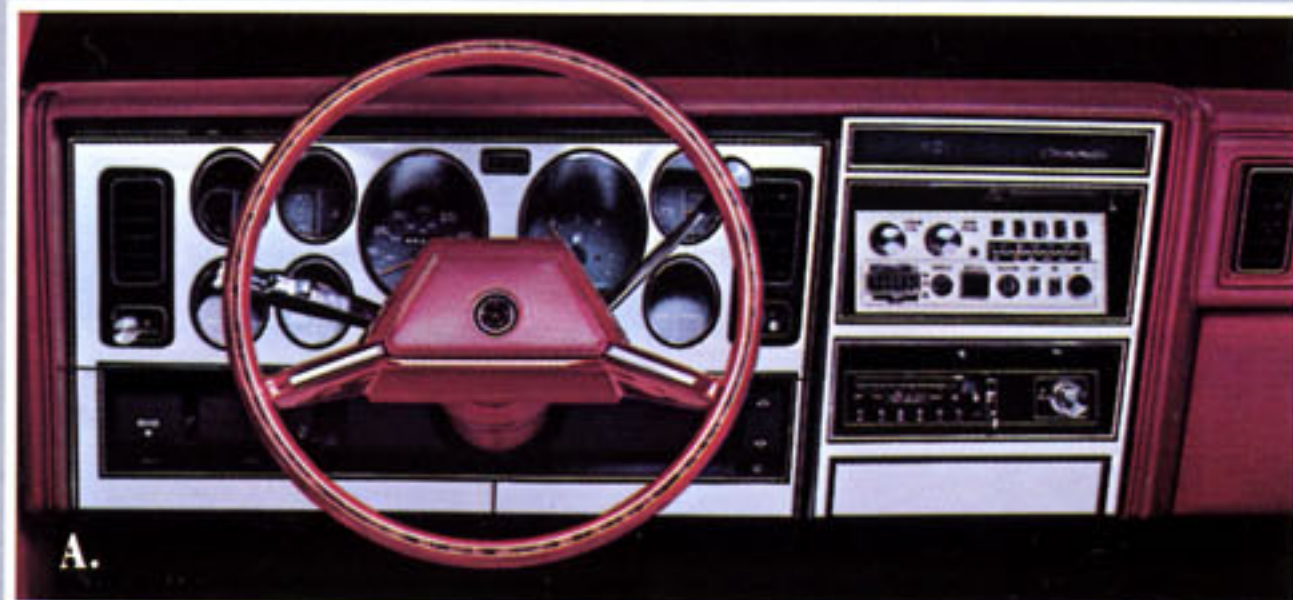
E. Illuminated Entry System

F. Sport Steering Wheel

G. AM/FM Stereo Radio with Search-Tune

H. Electronically Tuned AM/FM Stereo Radio/Cassette Player

I. Rear Window Defroster



EXTERIOR TRIM

Mirada exterior and chassis features include: Bright hood rear edge, fender edge, windshield, drip rail, belt, rear quarter side window, opera window, and rear window moldings • Bright/black wide-louvered up-and-over roof molding • Front fender louvers (nonfunctional) • Front and rear bumper protective rub strips • Tinted glass

INTERIOR TRIM

Standard all-cloth high-back Sport bucket seats with optional center cushion and folding center armrest. Offered in Dark Blue, Silver, Red, Cashmere.

Optional vinyl high-back Sport bucket seats with standard center cushion and folding center armrest. Offered in Dark Blue, Silver, Red, Cashmere.

Optional cloth-and-vinyl 60/40 individually adjustable seats. Offered in Mahogany, Dark Blue, Silver, Red, Cashmere. (Includes woodgrain instrument panel and Premium door trim.)

Optional leather-and-vinyl bucket seats with standard center cushion and folding center armrest. Offered in Mahogany, Silver, Cashmere. Also offered in White with Dark Blue or Red interior accents. (Includes woodgrain instrument panel and Premium door trim.)

OPTIONAL EQUIPMENT

- Air Conditioning—Semi-automatic*
- Battery—500-amp Long-Life (maintenance-free)
- Clock—Electronic digital
- Console
- Cushion—Center with folding armrest
- Defroster—Electrically heated rear window (required on all vehicles registered in New York state)
- Emissions Control System—High Altitude
- Emissions Control System and Testing (required on all vehicles registered in Calif.)
- Engine Cooling System*—Not available with air conditioning
- Glass—Windshield: clear
- Horns—Triad
- Lights—Cornering
- Lights—Illuminated entry system
- Mirror—Illuminated vanity, right
- Moldings—Sill, wheel opening
- Radio Delete—Credit option (on factory orders only)
- Radio Upgrade—Dual front speakers (requires AM radio)
- Speaker System—Premium (for use with electronically tuned stereo systems only)
- Speaker System—Premium (for use with mechanically tuned stereo systems only)

- Roof—Landau: vinyl
- Roof—T-Bar
- Speed Control—Automatic
- Steering Column—Tilt
- Steering Wheel—Luxury: two-spoke with leather-wrapped rim
- Steering Wheel—Sport
- Stripes—Body-side, hood and deck lid
- Suspension—Heavy-duty: includes heavy-duty rear springs and shock absorbers
- Suspension—Rear sway bar
- Tire—Spare: conventional
- Tires—P205/75R15 steel-belted radial wide white sidewall
- Tires—P215/70R15 steel-belted radial raised white letter
- Trunk Dress-Up
- Undercoating
- Wheel Covers—Premium: 15-inch
- Wheel Covers—Wire: 15-inch
- Wheels—Road: 10-spoke aluminum (four)
- Windshield Wipers—Deluxe: electric three-speed with intermittent wipe

Power

- Antenna
- Deck Lid Release—Trunk lamp included
- Door Locks
- Seat—Left and right, 60/40
- Seat—Left
- Windows

Radios

- AM/FM—Electronic Search-Tune stereo†
- AM/FM—Electronically tuned stereo†
- AM/FM—Electronically tuned stereo† and cassette player with Dolby‡ system
- AM/FM—Mechanically tuned stereo†
- AM/FM—Mechanically tuned stereo with eight-track tape player†
- AM/FM—Stereo† with 40-channel CB transceiver and fixed tri-band antenna

OPTIONAL PACKAGES

Light Group

- Trunk light* • Glove box light* • Ash receiver light* • Under-hood light*
- Ignition switch light with time delay*
- Three-function chime/tone including headlamps-on warning, seat belt and ignition key warning* • Low washer fluid light* • Map lamp* • Door-ajar light* • Illuminated hood and brake release nomenclature* • Fuel, temperature and alternator warning lights* • Reading lamp*

*Available in Group only.

Basic Group

- Air conditioning • Undercoating • Vinyl landau roof • Light Group • Windshield wipers with intermittent wipe
- Body-side, deck lid and hood stripes

CMX Package

- Sailcloth-textured vinyl simulated convertible roof • Bright touchdown moldings • CMX nameplates on front fenders • Color-keyed door handle inserts • Premium wheel covers • P205/75R15 steel-belted radial wide white sidewall tires • Center armrest (with bucket seats)

Protection Group

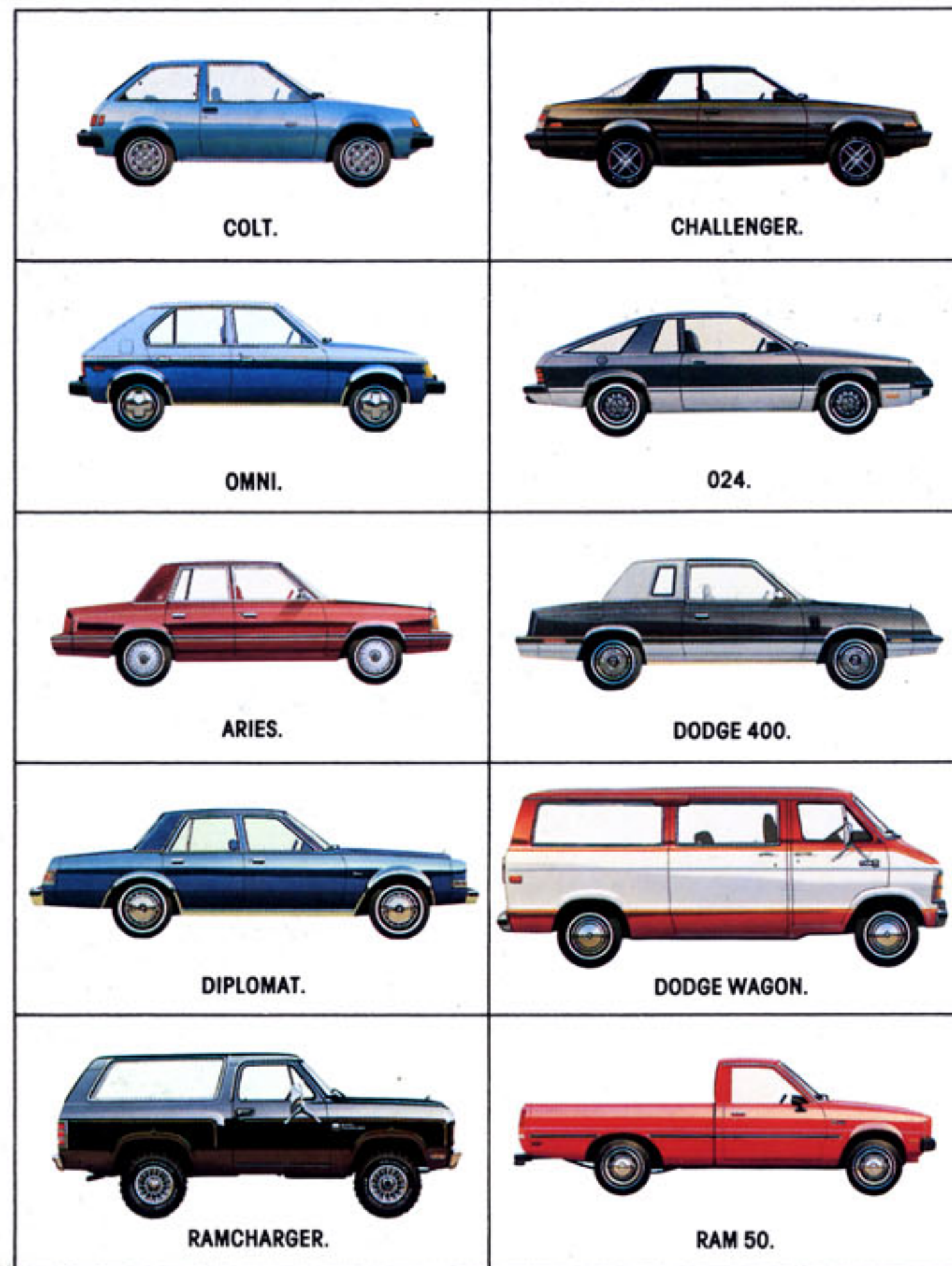
- Color-keyed carpet, front and rear floor mats* • Litter container* • Vinyl body-side molding: color-keyed* • Rear bumper guards*

*Available in Group only.

†Vehicles without factory air conditioning have special recommended cooling requirements for later air conditioning installation. See your dealer for details.

‡Includes four speakers, two front and two rear.

‡Dolby is a trademark of Dolby Laboratories.



STANDARD FEATURES

- Alternator—60-ampere
- Ash Receivers—Front and dual rear
- Battery—430-amp (maintenance-free)
- Brakes—Power: front disc; rear drum
- Bumper Protective Rub Strips—Front and rear
- Cigarette Lighter
- Coat Hooks
- Coolant Recovery System
- Electronic Ignition
- Flasher—Hazard warning
- Floor Covering—Carpet: trunk; color-keyed passenger compartment
- Fuel Tank—18-gallon
- Gauges—Alternator; engine temperature and fuel level; oil pressure light
- Glass—Tinted
- Glove Box Lock
- Hood Release—Inside
- Horns—Dual
- Ignition Lock—Anti-theft
- Instrument Panel—Top padding
- Insulation—Special body
- Lights—Backup, parking brake warning, side-marker and parking lights, courtesy lights, dual interior quarter lamps
- Lights—Halogen headlamps
- Louvers—Fender (nonfunctional)
- Mirrors—Inside rearview, day/night; outside left and convex right remote control
- Molding—Roof transverse: louvered texture
- Moldings—Belt, roof drip, windshield
- Radio—AM (may be deleted for credit on factory orders)
- Seat Belts—Deluxe: color-keyed
- Seats—High-back cloth-and-vinyl Sport bucket
- Steering—Power
- Steering Column Control—Multifunction
- Steering Wheel—Luxury two-spoke: color-keyed
- Suspension—Torsion bar front; leaf spring rear; front anti-sway bar
- Tire—Spare: compact, high-pressure
- Tires—P195/75R15 glass-belted radial white sidewall
- Transmission—Three-speed wide-ratio TorqueFlite automatic
- Trip Odometer
- Wheel Covers—Premier
- Windshield Washers and Wipers—Electric two-speed

EXTERIOR COLORS



Note: Due to occasional printing irregularities, the colors shown may vary slightly from actual hues. See your Dodge dealer for accurate color chips.

DIMENSIONS, WEIGHT AND CAPACITY

Length:	209.6"
Width:	72.7"
Height:	53.2"
Wheelbase:	112.7"
Turning Diameter:	40.7'
Curb Weight (lbs):	3,395
Track (front/rear):	60.0"/59.5"
Trunk Capacity:	16.7 cu ft
Passenger Capacity:	5
Fuel Capacity:	18 gallons

STANDARD SAFETY FEATURES

- Safety-Rim wheels • Energy-absorbing steering column and steering wheel
- Dual braking system with separate brake fluid reservoirs in the master cylinder
- Brake fluid pressure loss warning light • Hazard-warning flasher system
- Backup lights • Energy-absorbing instrument panel and sun visors • Side marker lights and reflectors • Fade-resistant front disc brakes • Ignition and steering column lock • Headlamp and wiper circuit breakers with automatic reset • Key-left-in-ignition warning • Reinforced windshield header and roof
- Glare reduction measures for windshield wipers, instrument panel and steering wheel

ENGINES

Type	Displacement	Bore and Stroke	Compression Ratio	Carburetion	Horsepower Torque	
					SAE Net @ RPM	
Federal 6-cyl OHV V-8 OHV	3.7-liter (225 CID)	3.40" x 4.12"	8.4:1	1-bbl	90 hp @ 3,600	160 lb-ft @ 1,600
	5.2-liter (318 CID)	3.91" x 3.31"	8.5:1	2-bbl	130 hp @ 4,000	230 lb-ft @ 2,000
California 6-cyl OHV V-8 OHV	3.7-liter (225 CID)	3.40" x 4.12"	8.4:1	1-bbl	90 hp @ 3,600	165 lb-ft @ 1,600
	5.2-liter (318 CID)	3.91" x 3.31"	8.5:1	4-bbl	165 hp @ 4,000	240 lb-ft @ 2,000

5/50 PROTECTION PLANS.

Chrysler offers you two choices of 5/50 Protection Plans: the 5/50 Power Train Plan and the 5/50 Custom Plan. These optional service contracts provide you with protection against tomorrow's rising service and parts costs for specified major repairs starting after your vehicle's "basic" limited warranty expires and lasting for five years or 50,000 miles (whichever occurs first) from your vehicle's original in-service date. The plans have a \$25 deductible, and provide an allowance for alternate transportation and towing. Ask your dealer for complete details.



Buy or Lease a Dodge Mirada.

If you buy a new car every two years or so, or would like to, you're in an ideal situation to take advantage of leasing—for that's the typical length of a lease contract. If you use your car in business, leasing could cut down on your operating and administrative expenses as well as give you accurate records for tax purposes. The more you learn about leasing, the more likely you are to consider it seriously. Talk it over with us—your local member of the Chrysler Leasing System.

SPECIFICATIONS

Engine:	3.7-liter (225 CID) Slant Six
Transmission:	TorqueFlite automatic
Suspension:	Front transverse torsion bar with anti-sway bar; rear leaf spring
Axle Ratio:	2.9
Tires:	P195/75R15 glass-belted radial white sidewall
Brakes:	Power front disc; power drum rear
Electrical:	Battery—430-amp (maintenance-free) Alternator—60-amp

Corrosion Protection

Chrysler Corporation's corrosion protection is among the best in the industry. It includes the extensive use of galvanized sheet metal panels, one of the best known methods of corrosion protection, and pre-coated steel in critical areas, as well as the seven-step dip-and-spray process.

All product illustrations and specifications are based on authorized information. Although descriptions are believed correct at publication approval, accuracy cannot be guaranteed. Some of the equipment shown on product illustrations is optional, at extra cost. Chrysler Corporation reserves the right to make changes from time to time, without notice or obligation, in prices, specifications, colors and materials, and to change or discontinue models. See your dealer for the latest information.



MOPAR parts are engineered by Chrysler Corporation for use in your new Dodge Mirada. When replacement is necessary, be sure to specify MOPAR parts. Used by professional mechanics all over the world.

A PRODUCT OF THE NEW CHRYSLER CORPORATION