

1984

CHRYSLER

FIFTH AVENUE



THE
LUXURY CAR
AS DEFINED
BY CHRYSLER



Conventional drive. Unconventional luxury. Full-size room. Engineered and built with expertise refined and honed to an advanced state.

The 1984 Chrysler Fifth Avenue carries the Chrysler tradition of defining what the contemporary full-size luxury car should be to a new high level.

Luxurious. Comfortable. With distinctive looks evoking immediate recognition. And with smooth, level ride and precise control.

The 1984 Chrysler Fifth Avenue is a "value-oriented" luxury car because it gives you 45 luxury features as standard equipment. It also provides you with solid assurances of durability through new corrosion-resistant features such as more extensive use of galvanized steel. Another one of those solid assurances is Chrysler Corporation's 5/50 Protection Plan, which extends limited warranty coverage on power train components, including engine, transmission, and axle—plus outer panel rust-through protection.* To fully appreciate what contemporary automotive luxury should be, visit your Chrysler dealer and test drive a 1984 Fifth Avenue. It will be an example of success you'll find you must have.

*Warranty is extended to five years or 50,000 miles—whichever comes first. A deductible applies. Fleet and lease vehicles are excluded. See your dealer for details.

About this catalog. We have tried to make this catalog as complete as possible. And we hope you find it useful. However, since the time of printing, some of the information you'll find here may have been updated. Your dealer has details, and you should ask him for current information before ordering.

Some of the equipment shown or described throughout this catalog is available at extra cost.

The 1984 Chrysler Fifth Avenue has more to it than luxury and comfort. High technology computer-assisted manufacturing techniques include robotic body welding for strength and durability, and extensive corrosion-fighting provisions that include new chrome plating and rust-resistant exterior fasteners.

The Chrysler Fifth Avenue carries you securely, thanks to the addition of standard steel-belted radial tires for better traction in a variety of climate conditions, and the strong, quiet 318 CID two-barrel V-8 engine now offered as standard equipment.

New luxury touches include standard AM digital readout radio with digital clock, luxury steering wheel, and rich silver sputter chrome treatment on instrument panel overlays.

Inside, Fifth Avenue seats you in the comfort of rich cloth seats. The 60/40 front seats have individual adjustments. The complete Lighting Package includes halogen headlamps with time-delay switches, and trunk and map/dome reading lamps.

FIFTH AVENUE
BLENDS SUBSTANCE
AND LUXURY
... HANDSOMELY.



Chrysler Fifth Avenue shown in Silver with Silver landau roof.



Optional 60/40 leather interior shown in Silver.

LUXURY, VALUE
AND THEN SOME,
AS TOLD BY
FIFTH AVENUE

The 1984 Chrysler Fifth Avenue will be seen in all the best places. Put yourself in the picture in a Fifth Avenue, surrounded by distinguished styling.

Mark a Fifth Avenue with your own touches—select from a group of options including AM/FM/MX radio with cassette player, Dolby* noise reduction system and integral digital clock; power glass sun roof, leather-wrapped steering wheel, and leather-and-vinyl seating with individually adjustable 60/40 front seats.

Call for the ultimate in luxury by specifying the Luxury Equipment Package on your Fifth Avenue and you will enjoy the finer touches of the Illuminated Entry System, automatic speed control, tilt steering column, opera lamps, power left front seat, Protection Group, and more.

The word "luxury" often denotes value. Never more true than with Fifth Avenue. Value is throughout with such features as the seven-step dip-and-spray process to help fight body corrosion. Computer selection determining the quality of materials and components before assembly. And an extensive quality control program.

The sales success of Fifth Avenue has demonstrated that while Chrysler has made a name for itself building high technology, fuel efficient smaller cars, it uses that same high technology in building an outstanding traditional luxury car.

*Dolby is a trademark of Dolby Laboratories.



Chrysler Fifth Avenue shown in White with White landau roof and available cast aluminum road wheels.

1984 CHRYSLER FIFTH AVENUE



OPTIONS (pictured)

Certain models, packages, and options are subject to specific restrictions, requirements, and late availability. Consult your dealer for current ordering information.

1. Leather-Wrapped Steering Wheel gives you a handsome, sure-gripping surface on the steering wheel. This option is available in four colors to compliment your interior selection.*

2. Power Glass Sun Roof gives you the joy of the open road in your Fifth Avenue. At the touch of a switch, the tinted glass roof panel opens to let in sunshine and fresh air. Touch the switch to close and the panel seals tightly against noise, dust, rain or snow.

3. AM/FM/MPX Radio Cassette Player with Dolby¹ and integral digital clock is the ultimate in available sound systems. It features digital station readout for maximum convenience in broadcast selection, memory capability for ten AM and ten FM stations, cassette tape system with Dolby¹ noise reduction system, and digital clock. You also may specify the optional Premium Radio Speaker Package which includes a power amplifier, two front speakers and two rear coaxial speakers.

4. Automatic Speed Control allows you to switch driving positions on long trips while providing you with fingertip speed control. This option also helps you save fuel by enabling you to drive at a more constant speed.*

5. Illuminated Visor Vanity Mirror provides your traveling companion with a lighted mirror that is hidden away behind the right visor when not in use.*

*Included with purchase of optional Luxury Equipment Package (see below).
¹Dolby is a trademark of Dolby Laboratories.

... MORE OPTIONS

- Battery—500-amp maintenance-free; heavy-duty
- Emissions Control System and Testing—required on vehicles registered in California

LIGHTS • Illuminated Entry System
• Illuminated vanity—right visor mirror

POWER • Radio antenna • Deck lid release • Door locks • Seat—left: 60/

ventional • Speed control—automatic
• Steering column—tilt • Steering wheel—luxury two-spoke; leather-wrapped • Suspension—heavy-duty; includes heavy-duty rear leaf springs, and heavy-duty shock absorbers, front and rear • Undercoating • Wheel covers—wire; 15-inch • Windshield wipers—deluxe

*Dolby is a trademark of Dolby Laboratories

OPTIONAL PACKAGES

LUXURY EQUIPMENT PACKAGE

- 500-ampere maintenance-free heavy-duty battery
- Illuminated entry system
- Opera lights
- Illuminated vanity mirror
- Power antenna
- Power deck lid release
- Power door locks
- Power seat, left
- AM/FM/MPX standard stereo radio with integral digital clock
- Premium speaker system
- 60/40 leather-and-vinyl seats with folding center armrest and passenger recliner
- Automatic speed control
- Tilt steering column
- Luxury two-spoke leather-wrapped steering wheel
- Premium 15-inch wire wheel covers
- Hood stripes
- Protection Group
- Deluxe intermittent windshield wipers
- PROTECTION GROUP
- Color-keyed carpet, front floor mats*
- Color-keyed carpet, rear floor mats*

*Available in Group only.

EXTERIOR TRIM

Chrysler Fifth Avenue exterior and chassis features include: • Bright windshield, roof drip rail, upper door frame, belt, wheel opening, sill with front and rear extension and vinyl roof termination moldings • Padded vinyl formal landau roof with unique backlight and brushed finish transverse roof molding • Simulated front fender louvers • Body-side and deck lid accent stripes • Body-color door handle tape inserts • Premium wheel covers • Front and rear bumper guards with bumper protective rub strips • Left and convex right remote control mirrors—chrome with body-color tape on outside with "Chrysler" identification on driver's side* Deck lower center trim panel with "Chrysler" block letters • Pentastar trunk lid lock cover

FUNCTIONAL EQUIPMENT

- Wide-ratio TorqueFlite automatic transmission
- Power steering
- Power brakes • P205/75R15 steel-belted radial ply whitewall tires • 5.2-liter (318 CID) two-barrel V-8 engine

DIMENSIONS, WEIGHT AND CAPACITY

Length: 206.7" • Width: 74.2" • Height: 55.3" • Wheelbase: 112.7" • Turning Diameter: 40.7" • Curb Weight: 3,601 lbs • Track (front/rear): 60.0"/59.5" • Trunk Capacity: 15.6 cu ft • Passenger Capacity: 6 • Fuel Capacity: 18 gallons

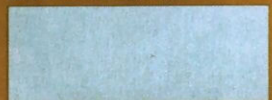
INTERIOR TRIM



Standard Chrysler Fifth Avenue.

Cloth-and-vinyl 60/40 individually adjustable seats with folding armrest. Offered in Silver, Dark Blue, Red, Beige.

CHRYSLER FIFTH AVENUE EXTERIOR COLORS



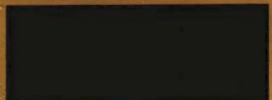
Radiant Silver Crystal Coat



Beige Crystal Coat



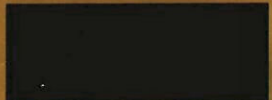
Crimson Red



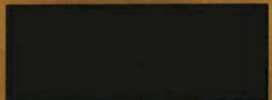
Sable Brown



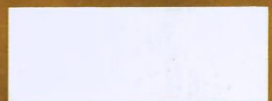
Charcoal Gray Pearl Coat



Nightwatch Blue



Black



White

NOTE: Due to occasional printing irregularities, the colors shown may vary slightly from actual hues. See your Chrysler dealer for accurate color chips.

Optional Chrysler Fifth Avenue.

Leather-and-vinyl 60/40 individually adjustable seats with folding armrest. In Silver, Dark Blue, Red, Beige.

STANDARD FEATURES

Air Conditioning—Semiautomatic temperature control
Alternator—78-ampere
Antisway Bar—Front
Battery—430-ampere; maintenance-free
Battery Test Indicator
Bezel—Deck; lower center trim with Chrysler block letters
Bumper Fillers—Front and rear; body-color
Bumper Guards—Front and rear; black
Bumper Protective Rub Strips—Front and rear; black
Carpet—Passenger compartment; color-keyed premium plush pile
Chimes—Key-in-ignition, seat belt, headlights on
Cigarette Lighter
Cleaner Air System
Coat Hooks
Coolant Recovery System
Defroster—Rear window; electric (required on all vehicles registered in New York state)
Division Bar—Rear door glass; black
Door Locks—Keyless
Engine—5.2-liter (318 CID) two-barrel V-8
Flasher System—Hazard warning
Fuel Tank—18-gallon
Gauges—Engine temperature and alternator with fuel and oil warning lights
Glass—Tinted; all windows
Glove Box Lock
Hood Ornament—Crystalline Pentastar
Hood Release—Inside
Horns—Dual
Ignition System—Electronic
Instrument Panel Trim—Dark feather-wood woodtone
Insulation—Hood pad
Light Group, includes: Trunk light, Glove box light, Ash receiver light, Map/dome reading lamps, Ignition switch light with time delay, Fuel, temperature and electrical system warning lights, Door-ajar warning light, Headlights-on, seat belt and ignition key warning chime/tone, Windshield washer fluid level indicator, Headlamp switch with time delay

ENGINE

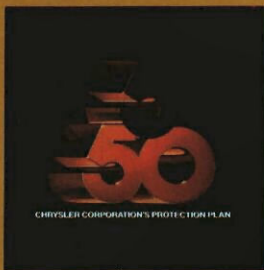
Type	Displacement	Bore & Stroke	Compression Ratio	Carburetion	Horsepower SAE Net @ RPM	Torque lb-ft @ 1,600
V-8 OHV (std)	5.2-liter (318 CID)	3.91" x 3.31"	8.5:1	2-bbl	130 hp @ 4,000	235 lb-ft @ 1,600

Lights—Halogen headlamps; backup, side marker
Lock Cover—Rear deck lid Pentastar; body color
Louvers—Fenders; body color and bright
Mirrors—Interior day/night; exterior, left and convex right remote control (with body color tape)
Moldings—Belt with brushed aluminum saddle applique, upper door frame, drip rail, sill, sill extension, (front and rear), vinyl roof termination, wheel opening, windshield, rear window
Multifunction Steering Column Control
Padded Instrument Panel
Power Brakes—Front disc; rear drum
Power Steering
Power Windows
Radio—AM, electronically tuned, digital readout, with integral digital clock
Radio Antenna—Fixed mast
Roof—Formal landau; padded vinyl in choice of seven colors
Seat Belts—Deluxe; color-keyed with automatic tension reliever/release
Seats—60/40 cloth with folding center armrest; choice of four colors
Sound Insulation—Special
Speedometer—85 mph
Steering Wheel—Luxury, two-spoke
Stripe—Hood; choice of five colors
Stripes—Body-side and deck lid
Suspension—Transverse torsion bar; front
Tape Inserts—Door handle; color-keyed
Tire—Spare; compact high-pressure
Tires—P205/75R15 steel-belted radial wide white sidewall (Goodyear Arriva)
Transmission—Automatic TorqueFlite; three-speed
Trip Odometer
Trunk Dress-Up—Black
Windshield Wipers—Electric; two-speed with washers

STANDARD SAFETY FEATURES

• Safety-Rim wheels • Energy absorbing steering column and steering wheel • Dual braking system with separate brake fluid reservoirs in the master cylinder • Brake fluid pressure loss warning light • Hazard-warning flasher system • Backup lights • Energy-absorbing instrument panel and sun visors • Side marker lights and reflectors • Fade-resistant front disc brakes • Ignition and steering column lock • Headlamp and wiper circuit breakers with automatic reset • Key-left-in-ignition warning • Reinforced windshield header and roof • Glare reduction measures for windshield wipers, instrument panel and steering wheel

Chrysler Corporation's corrosion protection is among the best in the industry. It includes the extensive use of galvanized sheet metal panels, one of the best known methods of corrosion protection, and pre-coated steel in critical areas, as well as the seven-step dip-and-spray process.



OPTIONAL 5/50 SERVICE CONTRACT COVERAGE

Chrysler Corporation offers a 5/50 "Added Coverage" (in Florida "Added Value Plan") Service Contract which provides protection against rising service and parts costs for specified major repairs not included in the 5/50 Limited Warranty. Coverage starts on the specified components in the plan after your vehicle's "basic" 12 month/12,000 mile warranty expires on these components and continues for five years or 50,000 miles (whichever occurs first) from the vehicle's original warranty start date. A deductible applies.

The plan provides an allowance for alternate transportation and towing. Ask your dealer for details.

CONSIDER LEASING FROM THE LEASING PROFESSIONALS.

In these days of tight money and high interest rates more consumers are considering leasing as an alternative to buying. Leasing a new Chrysler Fifth Avenue usually eliminates large down payments and often results in lower monthly payments because you're paying only for that portion of the vehicle life under the leasing agreement.

Leasing could be right for you, and the more you learn about it the more likely you are to consider it seriously. If leasing sounds like a sensible solution to your transportation needs, talk it over with us—your leasing professionals.

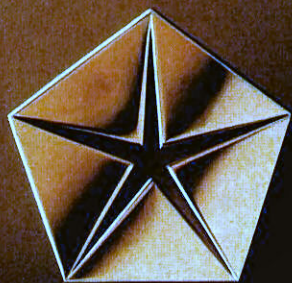
All product illustrations and specifications are based on authorized information. Although descriptions are believed correct at publication approval, accuracy cannot be guaranteed. Chrysler Corporation reserves the right to make changes from time to time, without notice or obligation, in prices, specifications, colors and materials, and to change or discontinue models. See your dealer for the latest information.

MOPAR parts are engineered by Chrysler Corporation for use in your new Chrysler Fifth Avenue. When replacement is necessary, be sure to specify MOPAR parts. Used by professional mechanics all over the world.



A PRODUCT OF
THE NEW CHRYSLER
CORPORATION

Form No. 81-005-4001 8/83(400M) Litho in U.S.A.



THE NEW CHRYSLER CORPORATION