



# 2005 SPRINTER

## STANDING TALL

What is Sprinter? It's your work week, your high mileage long haul companion and your most reliable partner on the job.

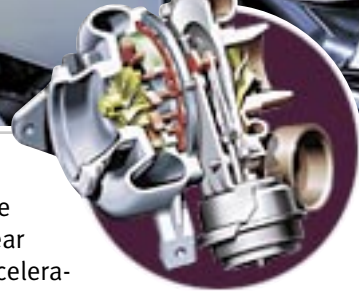
Check out the bold look and powerful performance of Dodge Sprinter.

- Interior and Exterior Features
- Color Options
- Dimensions and Capacities



## POWER AND TORQUE

Turbocharging the 2.7-liter CDI engine delivers strong acceleration peaks near 4,000 rpm, giving you on-demand acceleration coupled with noteworthy fuel economy. The engine also generates 154 horsepower at 3,800 rpm and 243 lb-ft of torque at 1,600 to 2,400 rpm.



## HIGH ROOF

Sprinter has an available high-roof option, providing a very comfortable 73 inches of walk-through height (nearly 20 inches more than the nearest competition). Accessibility to the interior is easy thanks to available rear doors that open a full 270 degrees (the widest-opening doors in its class) on 140-inch and 158-inch wheel-base models—and stay open with magnets mounted to the exterior panels.



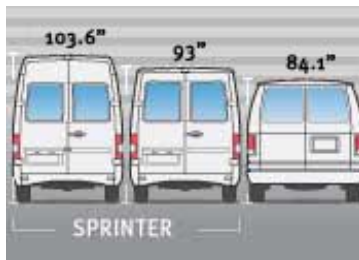
*\*Remember to properly secure all cargo.*

## TOWING/HAULING



Aside from towing up to 5,000 pounds when properly equipped, Sprinter has:

- Interior cubic volume of 473 cubic feet (Sprinter Cargo Van)
- Payload capacities of up to 4,824 pounds for Cargo Van and 3,893 pounds for Passenger Van



## ACCESSIBILITY

When matched side by side with the competition, no one comes close to Sprinter's walk-through height. The load height is purposefully low, making Sprinter worker friendly. Plus, Sprinter Cargo Van interior volume is an outstanding 473 cubic feet. (when properly equipped)



## MAINTENANCE INTERVALS

Nothing can match Sprinter's available ASSYST maintenance monitoring system. This technology is so refined, it can stretch the already impressive 10,000-mile standard oil change intervals up to an incredible 20,000 miles. And with Dodge's 7-year/70,000-mile powertrain limited warranty\* and 7-year/100,000-mile diesel engine warranty\*\* you can be confident Sprinter will be there for the long haul.

## OIL CHANGE INTERVAL

You won't have to stop by your dealer's quick lube anytime soon when you're driving a Sprinter. That's because it only requires an oil change normally every 10,000 miles.

## FUEL ECONOMY

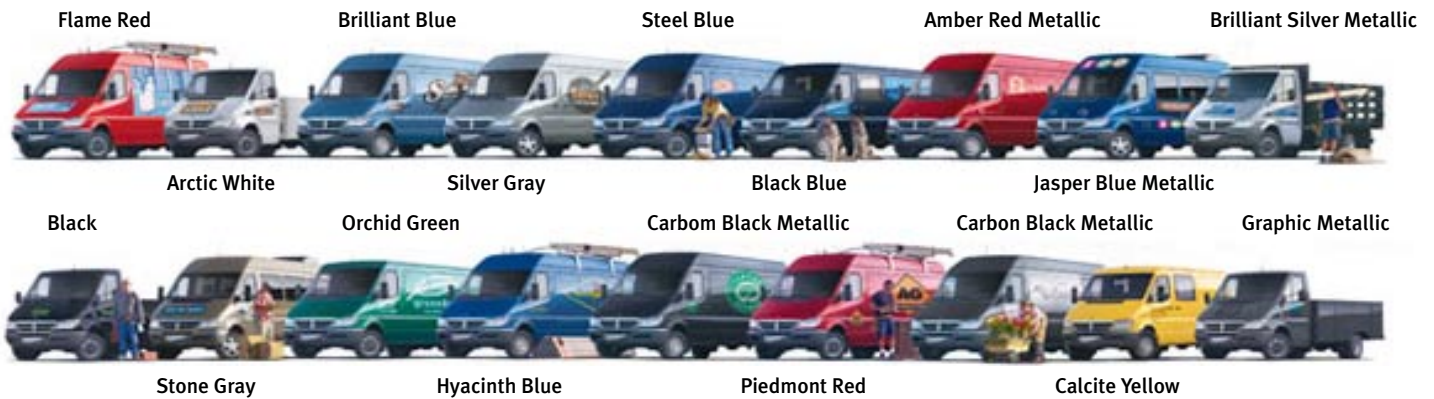
With an average fuel economy of up to 25\* miles per gallon, Dodge Sprinter's engine efficiency far outpaces any of our competition's vans or minibuses. It also has an impressive fuel tank that will give you a range of about 660 miles.

*\* Harmonic average fuel economy for 2500 140-inch-wheel-base Passenger Van at 50-percent load capacity. Results based on SAE test J1082 as conducted by FEV Engine Technology, Inc.*

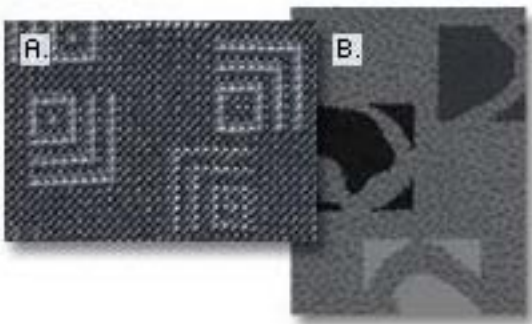
*\*7/100 Diesel Engine Limited Warranty: With Every Dodge Sprinter, you're backed by the DaimlerChrysler 7-year/100,000-mile Diesel Engine Limited*

*\*\*7/70 Powertrain Limited Warranty: Your Dodge Sprinter dealer is behind you for seven years or 70,000 miles protecting the hardest-working parts of your Dodge vehicle. This limited warranty is transferable to the second owner of your Sprinter with a fee. A deductible applies. See dealer for a copy.*

## AVAILABLE EXTERIOR COLORS



## FABRIC & TRIM



- A. Santos cloth in Gray, standard on all models
- B. Carat cloth in Gray, optional on Passenger Van

## WHEELS



- A. 15 x 6-inch steel wheels are standard on 118-inch-wheelbase 2500 models. 16 x 6-inch steel wheels are standard on 140- and 158-inch-wheelbase 2500 models
- B. 16 x 6-inch aluminum wheels are available on 140- and 158-inch-wheelbase 2500 Cargo/Passenger Van models
- C. 15 x 5-inch steel wheels are standard on 3500 Cargo Van models (front only). 16 x 6-inch steel wheels are standard on 3500 Cab Chassis models (front only)
- D. 15 x 5-inch steel wheels are standard on 3500 Cargo Van models (rear only). 16 x 6-inch steel wheels are standard on 3500 Cab Chassis models (rear only)

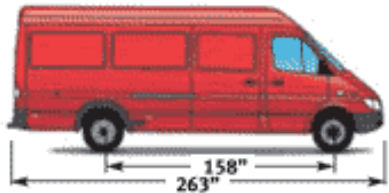
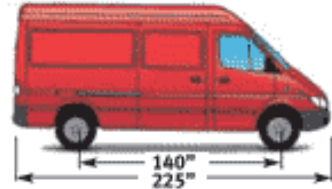
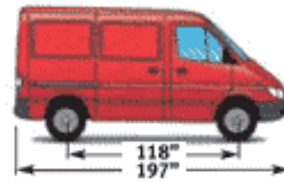


## DIMENSIONS AND CAPACITIES

### 2500 Passenger/Cargo Van/3500 Cargo Van

	Wheelbase (inches)	Roof Version	GVWR (lb.)	Dimensions of load volume (inches)			Load area (cu. Ft.)	Max. payload (lb.) (Pass./Cargo)
				Length	Width	Height		
<b>2500</b>	118	Std.	8,550	99	68.3	64.2	247	3,893/3,950
	140	Std.	8,550	128.5	68.3	64.2	321	3,551/3,615
	118	High	8,550	99	68.3	73	286	3,844/3,902
	140	High	8,550	128.5	68.3	73	367	3,492/3,560
	158	High	8,550	165.9	68.3	73	473	3,245/3,309
<b>3500</b>	140	Std.	9,990	128.5	68.3	64.3	321	4,824
	140	High	9,990	128.5	68.3	73	367	4,769
	158	High	9,990	165.9	68.3	73	473	4,531

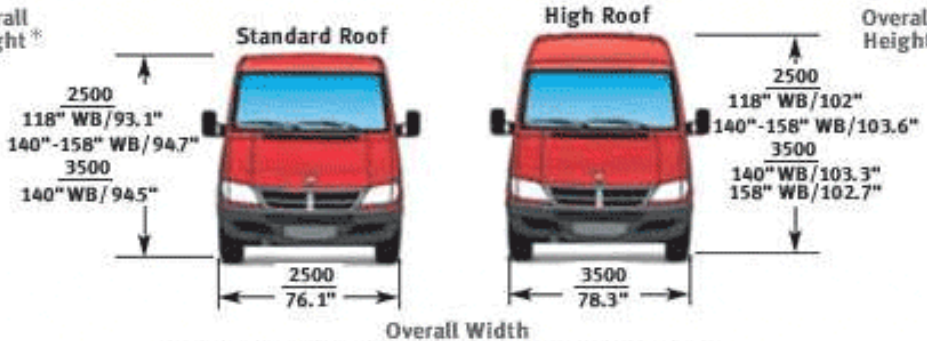
### Wheelbase Overall Length



### Cab Chassis

	Wheelbase (inches)	Roof Version	GVWR (lb.)	Base Curb Weight (lb.)
<b>2500</b>	140	Std.	8,550	4,139
	158	Std.	8,550	4,203
<b>3500</b>	140	Std.	10,200	4,426
	158	Std.	10,200	4,536

Overall Height \*



\*Cooling group adds 11 inches to overall height.