



ALL DOMINATING.

2007
DAKOTA

When we say that the Dakota comes with the most available torque, and the most available towing capability*, we're not pulling your leg.

We're pulling more weight than any other truck in the segment.

We made the 2006 big in every respect, including capability.

**All claims are based on Ward's Small pickup segmentation, when properly equipped.*

Check out the bold look and powerful performance of Dodge Dakota.

- Interior and Exterior Features
- Design & Technology
- Color Options
- Model Specifications



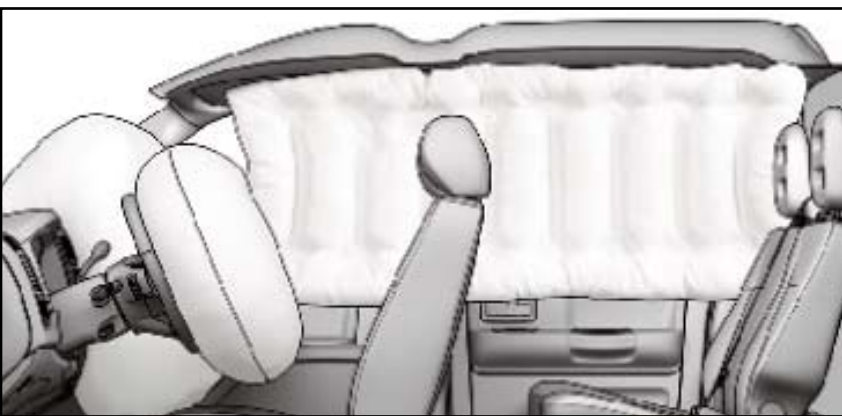
DAKOTA INTERIOR

The Dakota offers four doors standard on every model. And they open nearly 90 degrees for Quad Cab® and Full Swing™ rear door for Club Cab® (standard on SLT and Laramie and available on ST), for easier loading and unloading. Whether you choose Quad Cab® or Club Cab® Dakota gives you more size and more value in the perfect midsize package. Step inside and you'll find:

- Has the most overall interior room in its class* on Club Cab® and Quad Cab®
- Available six-passenger comfort, versatile 60/40 split-folding rear bench and 37 cubic feet of storage space (Quad Cab®)
- New rear access doors and 30 cubic feet of interior cargo space with rear seats up (Club Cab®). Rear access doors are Full Swing™ and they open nearly 170 degrees
- High level of standard features, including CD player with auxiliary jack
- Only pickup truck in it's class with available heated cloth seats**

* Excludes other DCX designed vehicles and sport utility trucks.

** All claims are based on Ward's Small pickup segmentation, when properly equipped.



AIR BAG PROTECTION

Air bags, air bags, and more air bags. The Dakota features standard advanced multistage driver and front-passenger air bags* with an occupant classification system (OCS) that adjusts the deployment force of the passenger-side front air bag based on passenger weight. Supplemental side-curtain air bags are available on both Quad Cab® and Club Cab® body styles to provide increased side-impact protection to front and rear outboard occupants in the event of a collision.

* Always sit properly in the seat with the seat belt fastened.



POWER

With your choice of two available class-exclusive V8 engines and a standard V6, Dakota delivers horsepower and torque by the truckload. The 4.7-liter high-output Magnum® V8 engine kicks out 260 horsepower and best-in-class 310 lb-ft of torque. The 4.7-liter Magnum V8 provides 230 horsepower and best-in-class 290 lb-ft of torque. And the standard 3.7-liter Magnum V6 engine with 210 horsepower and 235 lb-ft of torque.



TOWING & HAULING

Dakota's fully boxed, hydroformed frame provides the stiffness, strength, and durability to handle up to a 1,720-pound payload—the largest and longest standard cargo bed in its class.* It also helps deliver 7,100 pounds of maximum towing capability when properly equipped. That's over 3,000 pounds more than some of Dakota's nearest competitors.



INTERIOR ROOM

You don't need to cram it in. Dakota Club Cab® models with Full Swing™ rear doors that open nearly 170 degrees, provide the most overall interior space of any midsize truck. Which means plenty of room for up to five passengers with 40/40 dual rear seats with folding cushions (optional on ST and standard on SLT and Laramie), and 30 cubic feet of storage behind the rear seat and Full Swing™ doors.

Remember to properly secure all cargo.

STEREO

We broke the standards by equipping Dakota with a standard CD player and AM/FM stereo. You can also choose the available six-disc CD player with MP3 capability for up to sixty hours of continuous music, and a 276-watt six-speaker Alpine® system (standard on Laramie, available on SLT). Auxiliary input jack to radio, standard on ST and SLT. A SIRIUS satellite radio system is also available on certain models.



STORAGE

The biggest of them all. Quad Cab® models feature four full-size doors that open nearly 90 degrees for easier loading and unloading. Enough room to seat six full-size adults comfortably.* Has the most overall interior room in it's class. Bring it.

** When properly equipped.*

***Excludes other DCX designed vehicles and sport utility trucks.
Remember to properly secure all cargo.*

AVAILABLE EXTERIOR COLORS



Inferno Red Crystal Pearl

Light Khaki Metallic

Patriot Blue

Bright Silver Metallic

Bright White



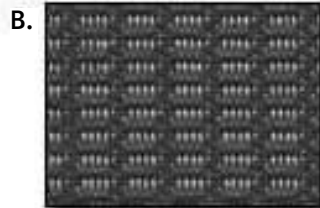
Flame Red

Electric Blue

Mineral Gray Metallic

Brilliant Black

FABRIC & TRIM



A. Laguna cloth in Slate Gray

B. Laguna cloth in Khaki

C. Sutton grain leather trim in Slate Gray

D. Sutton grain leather trim in Khaki

E. Trexx cloth in Slate Gray

WHEELS



A. 16" styled steel wheel standard on ST and SXT models

B. 16" painted cast-aluminum wheel standard on SLT and Laramie models available on ST models

C. 18-inch black painted cast aluminum wheels are available on Sport models

D. 18-inch chrome-clad aluminum wheels are available on SLT and Laramie models with Sport appearance

E. 16"x8" painted cast-aluminum wheel Standard on TRX and TRX4 Off-Road group models

F. 18" chrome-clad aluminum wheel available on SLT and Laramie models

DAKOTA BUYER'S GUIDE

	CLUB CAB®/ QUAD CAB®		
	ST	SLT	LARAMIE
	A	E	J
ENGINE AND TRANSMISSION			
3.7L MAGNUM® V6/6-SPEED MANUAL	•	•	N/A
3.7L MAGNUM V6/4-SPEED AUTOMATIC	O	O	•
4.7L MAGNUM V8/6-SPEED MANUAL	O	O	N/A
4.7L MAGNUM V8/5-SPEED AUTOMATIC	O	O	O
4.7L FLEXIBLE FUEL MAGNUM V8 (45 STATES ONLY)/5-SPEED AUTOMATIC	O	O	O
4.7L HIGH OUTPUT MAGNUM V8/5-SPEED AUTOMATIC	N/A	O	O
MECHANICAL			
ANTISPIN DIFFERENTIAL — Must have 3.55 or 3.92 rear axle ratio (included with 4.7L High Output V8)	O/P	O/P	O/P
AXLE RATIO — 3.21 rear (4x2 models with the 6-speed manual transmission only)	•	•	
— 3.55 rear (included with 4x4 models; not available with 4.7L High Output V8 engine)	O	O	•
— 3.92 rear (included with 4.7L High Output V8 and 4-speed automatic transmission 4x4 models; requires antispin rear differential; not available with manual transmission)	O/P	O/P	O/P
BATTERY — 750-amp (included with the Heavy-Duty Service Group)	P	P	P
BRAKES — Front disc/rear drum with 4-wheel ABS	O	O	O
ENGINE BLOCK HEATER	O	O	O
FULL SWING™ REAR DOORS — Club Cab models only (included with ST Popular Equipment Group)	P	•	•
TRANSFER CASE (4x4 MODELS ONLY) — Electric, part-time shift-on-the-fly	•	•	•
— Electric, full-time shift-on-the-fly, AWD system with manual HI and LO range (requires a V8 engine and automatic transmission)		O	O
EXTERIOR FEATURES			
BEDLINER — Box, under-the-rail	O	O	O
BODYSIDE MOLDING — Deep Gray		O	
— Body-color (included with SLT and Laramie Sport Appearance Groups)		P	P
— Chrome			•
CHROME TUBULAR SIDE STEPS — (Included with Chrome Accent Group)	O/P	O/P	O/P
FASCIAS — Front and rear, Deep Gray	•		
— Front and rear, body-color (included with Sport Appearance Group)	P	•	P
— Front, body-color with chrome insert and rear chrome step bumper			•
FOG LAMPS — Integrated into front fascia (included with Sport Appearance Group)	P	•	•
HEADLAMPS — Halogen, manual	•	•	
— Halogen, automatic			•
MIRRORS, EXTERIOR — Dual manual 5"x7" Black, fixed	•		
— Dual power 5"x7" Black, fixed	P	•	•
— Dual power 6"x9" Black, foldaway (included with Trailer Tow Group)		P	P
TIRES — Includes full-size spare. Actual spare tire and size varies by trim level and tire	•	•	
4x2			
— P245/70R16 BSW on-/off-road			
— P255/65R16 OWL all-season		O	•
— P265/70R16 OWL on-/off-road (included in TRX 4x2 Group)	P	P	P
— P265/60R18 BSW on-/off-road (included with Sport Appearance Group)		O/P	O/P
— P265/60R18 OWL on-/off-road		O	O

	CLUB CAB® / QUAD CAB®		
	ST	SLT	LARAMIE
	A	E	J
EXTERIOR FEATURES (CONTINUED)			
TIRES (CONTINUED) —			
^{4x4} — P245/70R16 BSW on-/off-road	•	•	
— P265/70R16 OWL on-/off-road		O	•
— P265/70R16 OWL Rugged Trail (included in TRX4 Off-Road Group)	P	P	P
— P265/60R18 BSW on-/off-road (included with Sport Appearance Group)		O/P	O/P
— P265/60R18 OWL on-/off-road		O	O
WHEELS — 16"x7" drop-center steel	•		
— 16"x8" painted cast-aluminum (included with ST Sport Appearance or SXT Group)	P	•	•
— 16"x8" painted cast-aluminum off-road (included in TRX and TRX4 Groups)	P	P	P
— 18"x8" Silver painted cast-aluminum (included with SLT and Laramie Sport Appearance Group)		P	P
— 18"x8" Black painted cast-aluminum (optional with SLT and Laramie Sport Appearance Group)		O	O
— 18"x8" bright chrome-clad aluminum (included with Laramie Popular Equipment Group)		O	P
INTERIOR			
CONSOLE — Center floor console (included with ST Popular Equipment Group)	P	•	•
— Overhead, with mini-trip computer and HomeLink® Universal Transceiver (included with Interior Convenience Group)		•	•
INSTRUMENT CLUSTER — Deluxe Satin Silver trim rings		•	•
SPEED CONTROL	P	•	•
STEERING COLUMN — Tilt	P	•	•
STEERING WHEEL — Leather-wrapped (included with leather-trimmed seats and remote audio controls)		P	•
SUNROOF — Includes overhead console		O	O
WINDOWS — Power (included with Power Convenience Group)	P	•	•
— Rear sliding with deep tint (not available with rear window defroster) (included with ST Popular Equipment Group)	P	•	•
— Rear defroster with deep tint (not available with sliding rear window)	O	O	O
SEATING & TRIM			
SEATS, FABRIC — Standard cloth	•		
— Premium cloth with YES Essentials® Seat Fabric (included with ST Popular Equipment Group)	P	•	
— Sutton Grain leather-trimmed		O	•
SEATS, FRONT — Heated front bucket seats; available with cloth and leather	P	O	O
— Low-back bucket seats	•		
— Low-back bucket seats with full center console	P	•	•
— 40/20/40 split-bench with center folding armrest with storage	O	O	O
— 6-way power driver's seat with manual lumbar adjust	P	•	•
SEATS, REAR — 40/40 folding seats (Club Cab)	P	•	•
— 40/60 folding seats (Quad Cab)	•	•	•
ENTERTAINMENT SYSTEMS			
REMOTE AUDIO CONTROLS — Includes leather-wrapped steering wheel and requires Alpine® Sound System (included with SLT Popular Equipment Group)		P	•

	CLUB CAB®/ QUAD CAB®		
	ST	SLT	LARAMIE
	A	F	I
ENTERTAINMENT SYSTEMS (CONTINUED)			
SOUND BOX GROUP — 508 total amplified watts of power; 9 total speakers, including a 10" subwoofer and 2 tweeters included in a translucent stylized box. Includes 750-amp battery (available only on Club Cab models with Slate Gray bucket seats)		O	O
SOUND SYSTEM RADIO — AM/FM stereo radio with single-disc CD player and auxiliary input jack	*	*	
— AM/FM premium stereo radio with 6-disc integrated CD player with MP3 capability and RDS		O	*
— SIRIUS® Satellite Radio System (included with ST Popular Equipment Group)	P	*	*
SPEAKERS — Premium Speaker System by Alpine, includes 6 speakers (in 6 locations) with 276-watt amplifier (included with SLT Popular Equipment Group)		P	*
SAFETY & SECURITY			
AIR BAGS⁽¹⁾			
— Advanced multistage driver and front-passenger (with passenger on/off switch for Club Cab models)	*	*	*
— Supplemental side-curtain offer additional protection to front and rear outboard occupants in the event of a collision (not available with sunroof)	O	O	O,P
KEYLESS ENTRY — (Included with Power Convenience Group)		*	*
REMOTE START SYSTEM — Integrated with remote key pad (included with SLT Popular Equipment Group)		P	*
SECURITY GROUP — Integrated vehicle alarm system, includes security alarm and Sentry Key®		*	*
SENTRY KEY — Antitheft engine immobilizer system with 2 encoded keys (included with the Security Group)		*	*
PACKAGES			
CHROME ACCENT GROUP — Includes tubular side steps, exhaust tip, fuel filler door and front air deflector	O	O	O
CONVENIENCE GROUP — Electronic speed control and tilt steering column	O	*	*
HEAVY-DUTY SERVICE GROUP — Includes 750-amp battery, auxiliary in-tank transmission cooler and power steering cooler (included with the Trailer Tow and TRX4 Groups)	P	P	P
INTERIOR CONVENIENCE GROUP — Overhead console with map lights, mini-trip computer, and HomeLink® Universal Transceiver		*	*
LARAMIE POPULAR EQUIPMENT GROUP — Includes 18" chrome-clad wheels and supplemental side-curtain air bags			O
POWER CONVENIENCE GROUP — Remote keyless entry, power door locks, and power windows with driver one-touch down feature	P	*	*
SKID PLATE GROUP — 2 front tow hooks and 2 skid plate shields that protect the transfer case, front suspension, and the fuel tank (available on 4x4 models only) (included with TRX4 Off Road)	O,P	O,P	O,P
SLT POPULAR EQUIPMENT GROUP — Includes remote audio controls, premium audio and remote start system		O	
SPORT APPEARANCE GROUP — Body-color front and rear fascias with monochromatic appearance, body-color bodyside moldings, body-color grille, cargo box "Sport" decals (4x2 only), 18" Silver painted aluminum wheels		O	O
ST POPULAR EQUIPMENT GROUP — Includes sliding rear window, 40/40 rear seats (Club Cab), SIRIUS, Full Swing™ rear doors (Club Cab), power/heated bucket front seats with center console (Quad Cab)	O		
ST SPORT APPEARANCE GROUP — Body-color front and rear fascias with monochromatic appearance, body-color grille, cargo box "Sport" decals (4x2 only), fog lamps, 16" aluminum wheels	O		
SXT GROUP — Includes power convenience, tilt and cruise steering wheel, unique SXT cargo box decal and 16-inch aluminum wheels	O		
TRAILER TOW GROUP — Class IV receiver, 7-pin wiring harness, 7- to 4-pin adaptor, and includes 6"x9" power, heated mirrors (SLT/Laramie only) (includes Heavy-Duty Service Group)	O	O	O
TRX GROUP — Includes 3.55 axle ratio with antispin rear differential, tow hooks, special TRX decals on cargo box, special 16"x8" (WD7) cast-aluminum off-road wheels with P265/70R16 OWL all-terrain tires	O	O	O
TRX4 OFF-ROAD GROUP — Includes Heavy-Duty Service Group (ADJ), Skid Plate Group (ADL), antispin differential, upgraded 3.92 axle ratio (with automatic transmission only), TRX4 Off-Road decals on cargo box, front and rear rubber floor mats, special 16"x8" (WD7) cast-aluminum off-road wheels with P265/70R16 OWL Rugged Trail tire	O	O	O

* = Included. P = Available within package noted. O = Optional.

⁽¹⁾ Always sit properly in the seat with the seat belt fastened. Children 12 and under should always be in a backseat in Dakota Quad Cab or in the front seat only with the passenger air bag turned off in Dakota Club Cab, while correctly using an infant or child restraint system or the seat belt positioned correctly for the child's age and size.