

2011 DODGE AVENGER  
800-4ADODGE // DODGE.COM



# DODGE AVENGER



**01. AVENGER EXPRESS.** Drivers looking for a reliable and value-focused vehicle that also provides a comfortable interior with a stunning exterior need look no further than the exceptional value of Avenger Express.

**02. AVENGER MAINSTREET.** For those seeking responsive but responsible performance, Avenger Mainstreet is your trim level. This is where instinctive precision merges with impressive fuel efficiency.

**03. AVENGER HEAT.** The Avenger Heat adds sporty exterior design features to the all-new Pentastar® V6 engine to create a powerful package without the premium price.

**04. AVENGER LUX.** Sleek exterior and even sleeker performance is the crux of Avenger LUX models. This is sports-minded agility and fun-to-drive attitude. Its high style with luxury interior design cues and upgraded exterior touches deliver a gutsy, full-on Avenger personality.



Like the chiseled body of a world-class athlete, Avenger takes to the streets sporting new aggressive-looking fascias, a signature Dodge crosshair grille, projector fog lamps, and new LED taillamps that are more responsive and shine brighter for a better see-and-be-seen vibe. Even the windshield and side glass underwent an acoustic treatment to help prevent road noise from entering the cabin. Other available Avenger exterior design features include: rear spoiler, 18-inch wheels, heated folding body-color mirrors, bright dual exhaust tips, and sunroof.





Avenger LUX with optional Red leather-trimmed interior.

High comfort and high style collide. Choose between trim levels offering premium seat fabric or leather-trimmed seating surfaces. A power 8-way driver seat and heated driver and front-passenger seats are available. Both driver and passengers are treated to spacious seating, and soft-touch resting points for hands and arms, and the available automatic temperature control keeps the environment just right. LED lighting illuminates the interior while a cool blue-green glow spotlights the instrument panel. Avenger maximizes passenger and cargo potential with a standard 60/40 split-folding rear seat that makes room for longer loads, such as snow skis. Improvements made to the body, suspension, and drivetrain have made the 2011 Dodge Avenger quieter and more comfortable to drive.





**STAY CONNECTED.** Outfit your Avenger with Uconnect® to help stay in touch with the people, music, and devices that matter most. It acts as the hub for your most important media – cell phone, Internet, satellite radio, navigation system, and personal devices, such as an iPod® or smartphone. The Uconnect user-friendly systems are designed to make your life easier, wherever you roam.



**PHONE.** Talking on the phone while driving has never been easier – or more responsible. Uconnect Phone is the in-vehicle, voice-activated communication system that allows you to pair up to seven Bluetooth® compatible phones and then talk virtually hands-free. This system is also clever enough to synchronize with your phone's address book<sup>[1]\*</sup> – up to 1,000 entries – every time you get into your vehicle.



**WEB.** Put the power of high-speed Internet in your vehicle with Uconnect Web.<sup>[2]</sup> Effortlessly connect any WiFi-enabled device to the Internet at 3G broadband speeds, making your vehicle a mobile Hotspot within a 150-ft range. Passengers can use multiple devices at the same time. There's no need for cell cards or software with this unique Authentic Accessory by Mopar – connectivity is all done wirelessly. Subscription required. Sold separately.



**VOICE COMMAND.** It simplifies driving by letting you keep your eyes on the road and your hands on the wheel. Vocally select FM radio stations, SIRIUS® Satellite Radio<sup>[3]</sup> channels, make and receive calls, select navigation destinations, and record voice memos. This smart system technology can also be adapted to better recognize your voice and can understand commands in English, French, and Spanish.



**ENTERTAINMENT.** Manage all of your media. You'll have six ways to access audio, including SIRIUS Satellite Radio<sup>[3]</sup> (your first year of service is included), a 30GB hard drive, Bluetooth Streaming Audio, auxiliary input jack, CD, and radio.



**NAVIGATION.** Provides turn-by-turn guidance by Voice Command and visual display. It can also locate nearby restaurants, shopping, hospitals, or points of local interest. Add SIRIUS Traffic<sup>TM[3]</sup> for real-time traffic updates, including accident alerts, road closings, and traffic flow. Your first year of SIRIUS Traffic<sup>[3]</sup> service is included.

## UCONNECT MEDIA CENTER RADIOS

AVAILABLE	730N <sup>†</sup>	430N	430	130
Avenger LUX	0	0	S	
Avenger Heat			S	
Avenger Mainstreet			0	S
Avenger Express				S
<b>SELECTED FEATURES</b>				
LCD Display	6.5-inch Touch	6.5-inch Touch	6.5-inch Touch	
Optical Drive	CD/DVD/MP3	CD/DVD/MP3	CD/DVD/MP3	
Navigation	S	S (Garmin®)		
SIRIUS Travel Link <sup>TM[3]</sup>	S	S		
SIRIUS Traffic <sup>[3]</sup>	0			
SIRIUS Satellite Radio <sup>[3]</sup>	S	S	S	0
Storage	30GB	30GB	30GB	
Audio Jack	S	S	S	S
Hands-Free Voice Command of Phone, Radio, Players <sup>[4]</sup>	S	0	0	0
Bluetooth Streaming Audio <sup>[4]</sup>	S	0	0	0
Remote USB Port for Digital Media Storage/ Players (iPod)	S	0	0	0

S = Standard 0 = Optional



**SIRIUS TRAVEL LINK<sup>TM[3]</sup>†** brings a wealth of useful information to your fingertips, including national weather information for current and forecasted weather, fuel prices for local gas stations, sports scores for in-game and final scores, and weekly local movie theater listings and schedules. \*A note about this brochure: All disclaimers can be found on page 17. †Late availability.



**AVENGER PERFORMANCE.** Take to the streets with either of Avenger's sporty and efficient engines. The all-new 3.6L DOHC Variable Valve Timing (VVT) Pentastar® V6 engine was named one of *Ward's 10 Best Engines* for 2011. From state-of-the-art aluminum block casting to full four-cam phasing to ultra-fast data processing and torque-based engine management, the all-new 3.6-liter Pentastar engine applies some of the most advanced automotive engine technology. The result is an exceptional blend of high torque, fuel efficiency (3.6L engine offers EPA estimated 19 city/29 hwy mpg), low emissions, and first-rate noise, vibration, and harshness control. The only thing better than numbers like 283 horsepower and 260 lb-ft of torque is the engine's durability-enhancing features that require very low maintenance. The 2.4-liter World Engine features dual VVT and provides a strong balance of fuel efficiency (2.4L engine with available 6-speed AutoStick transmission offers EPA estimated 20 city/31 hwy mpg) and solid performance with 173 horsepower. **SUSPENSIONS.** The Dodge engineers retuned virtually every part of the suspension in Avenger for 2011, making significant upgrades including MacPherson struts up front, backed by multilink coils in the back. Drivers will appreciate a fun and sporty driving experience.



# SAFETY. DESIGN.

**DODGE AVENGER: A 2011 INSURANCE INSTITUTE FOR HIGHWAY SAFETY TOP SAFETY PICK.**

**ELECTRONIC STABILITY CONTROL (ESC)<sup>[5]</sup>** In adverse conditions, the standard ESC and Brake

Assist works with an advanced all-speed traction control system to help the driver maintain vehicle directional stability and limit oversteering or understeering. Brake Assist detects

conditions when maximum force is needed for optimum stopping power. **ANTILOCK BRAKE**

**SYSTEM (ABS).** Standard four-wheel antilock disc brakes afford premium stopping power

from state-of-the-art electronics that provide faster system response. ABS senses and

prevents wheel lockup, offering improved steering control under extreme braking and/or

slippery conditions. **AIR BAGS<sup>[6]</sup>** All Avenger models feature standard advanced multistage

driver and front-passenger air bags, supplemental side-curtain air bags, and supplemental

driver and front-passenger-seat mounted air bags. **ACTIVE FRONT HEAD RESTRAINTS<sup>[6]</sup>** Head

restraints automatically move forward and upward in the event of a rear-end collision to

decrease the space between the head restraint and the occupant's head, helping to reduce

the chance of injury. **TIRE PRESSURE MONITORING SYSTEM.** A warning light in the instrument

cluster on Avenger Express alerts the driver to tires with high or low pressure. All other models

come equipped with the premium system that displays individual tire pressures.



**TOP  
SAFETY  
PICK** 2011

When you enhance your Avenger with Authentic Dodge Accessories by Mopar, you'll make your vehicle even more outstanding. **17-INCH CHROME WHEEL.** Our premium wheel is machined to match your Avenger's exact specifications and helps deliver a smooth and balanced ride while offering a long-lasting shine. **REAR SPOILER.** Add even more aerodynamic attitude with a spoiler that has undergone testing to ensure durability. **HITCH RECEIVER.<sup>[7]</sup>** Your Avenger will really haul when it's equipped with the Class I Hitch Receiver with a towing capacity of up to 1,500 lb.<sup>[7]</sup> Ball Mount and Wiring Harness sold separately. **CHROME EXHAUST TIP.** Add a bright, bold touch to the back of your Avenger with this corrosion-resistant chrome exhaust tip. **SUNROOF AIR DEFLECTOR.** Keep wind noise to a minimum while deflecting air and debris up and over your sunroof opening while the vehicle is moving. For the full range of accessories, visit [mopar.com](http://mopar.com)

AUTHENTIC DODGE ACCESSORIES



## SPECIFICATIONS



### AVENGER EXPRESS

**STANDARD FEATURES:** 2.4-liter DOHC 16V I-4 World Engine • 4-speed automatic • Four-wheel ABS • Speed control • Tinted, laminated front and Solar-Control rear glass • Power mirrors • 225/55R17 BSW AS Touring tires • 17-inch wheels • Body-color door handles • Front and rear stabilizer bars • Electronic Stability Control<sup>[5]</sup> with Brake Assist and all-speed traction control • Remote Keyless/Illuminated Entry • Security alarm • Sentry Key<sup>®</sup> theft deterrent system **OPTIONAL FEATURES:** Engine block heater • Smoker's Group



### AVENGER MAINSTREET

**STANDARD FEATURES PLUS EXPRESS STANDARD FEATURES:** Body-color, power, heated mirrors • Tip Start • 6-speed AutoStick transmission • 17-inch aluminum wheels • Tire Pressure Monitoring Display **OPTIONAL FEATURES:** Uconnect<sup>®</sup> Phone • Power sunroof • Media Center 430 • Cold Weather Group – Includes remote start system and heated front seats • Engine block heater • Smoker's Group



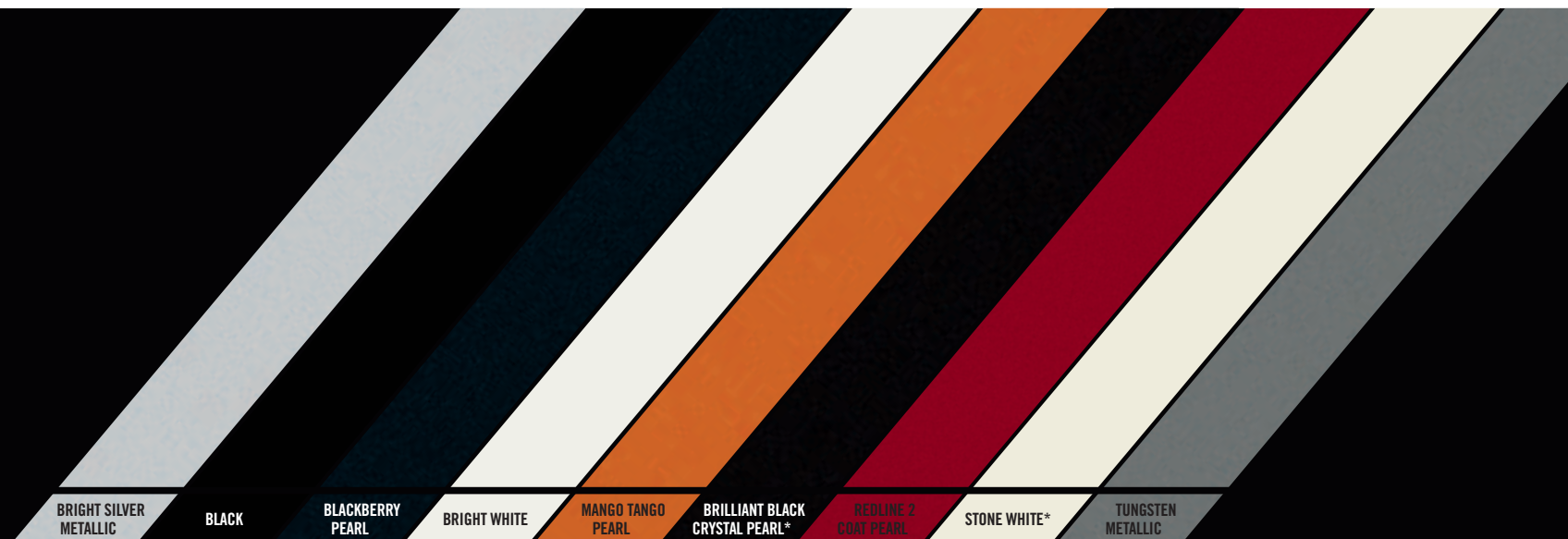
### AVENGER HEAT

**STANDARD FEATURES PLUS MAINSTREET STANDARD FEATURES:** 3.6L Pentastar<sup>®</sup> V6 Flex Fuel Engine • 6-speed AutoStick transmission • Tip Start • 160-amp alternator • Dual bright exhaust tips • Projector fog lamps • Automatic headlamps • Decklid spoiler • 18-inch aluminum wheels and tires **OPTIONAL FEATURES:** Uconnect Phone • Power sunroof • Cold Weather Group – Includes remote start system and heated front seats • Engine block heater • Smoker's Group



### AVENGER LUX

**STANDARD FEATURES PLUS MAINSTREET STANDARD FEATURES:** Body-color, power, heated mirrors • Tire Pressure Monitoring System • Projector fog lamps • Automatic headlamps • Remote start • HomeLink<sup>®</sup> Universal Garage Door Opener • Heated front seats • 18-inch chrome-clad aluminum wheels and tires • Power windows with one-touch up/down on front windows **OPTIONAL FEATURES:** 3.6L Pentastar V6 Flex Fuel Engine • 6-speed AutoStick transmission • Media Center 730N • Media Center 430N • Six premium Boston Acoustics<sup>®</sup> speakers • Power sunroof • Engine block heater • Smoker's Group



All colors available on all models. \*Limited availability.

## AVENGER WHEELS



**01.** 17-inch wheel cover (Standard on Avenger Express). **02.** 17-inch cast aluminum wheel (Standard on Avenger Mainstreet). **03.** 18-inch cast aluminum wheel (Standard on Avenger Heat). **04.** 18-inch chrome-clad aluminum wheel (Standard on Avenger LUX).



**DODGE.COM/LIFE** // Check out an extensive line of gifts and gear for the Dodge enthusiast. From authentic apparel to die-cast replica cars for the collector, as well as electronics and office supplies, all lifestyle items are as bold as your Dodge vehicle. These products are for placement only; refer to [dodge.com/life](http://dodge.com/life) for current product availability.

# AVENGER

# SPECIFICATIONS



AVENGER EXPRESS

**AVENGER EXPRESS INCLUDES //** Power windows with driver's side one-touch • Air conditioning • Air filtration system • Floor console with fore/aft sliding armrest and dual storage compartments • Power door locks • Premium front and rear floor mats • Tilt/telescoping steering column • Steering wheel audio controls • Stain-resistant seat fabric, low-back bucket seats • 60/40 split-folding rear seatbacks with pass-through • Soft-touch materials • Ambient LED lighting • Media Center 130 CD/MP3 radio with audio jack • Four speakers • Front active head restraints<sup>(6)</sup> • Advanced multistage driver and front-passenger air bags<sup>(6)</sup> • Supplemental side-curtain air bags<sup>(6)</sup> for front and rear outboard occupants • Supplemental front-seat mounted air bags<sup>(6)</sup> • Tire Pressure Monitoring Warning Lamp • Manual adjustable lumbar

**AVENGER EXPRESS FABRICS //**

- A) Momentum Cloth Inserts – in Black
- B) Wallace II Cloth Bolsters – in Black
- C) Momentum Cloth Inserts – in Light Frost Beige
- D) Wallace II Cloth Bolsters – in Light Frost Beige



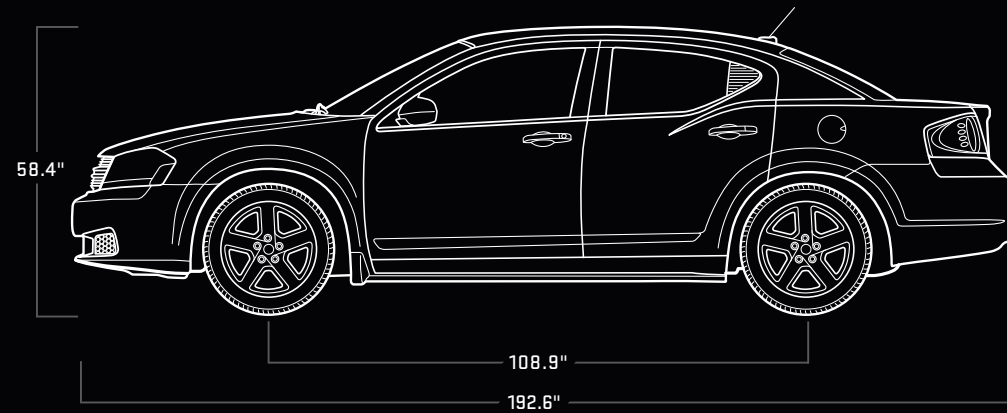
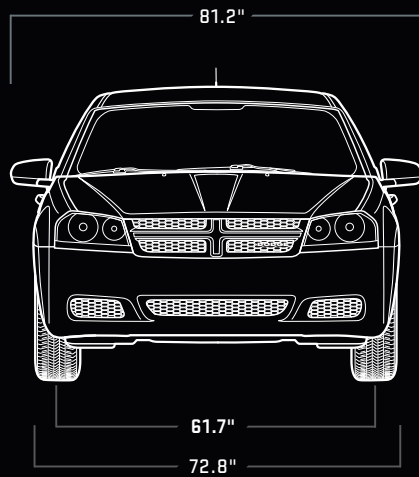
AVENGER MAINSTREET

**AVENGER MAINSTREET INCLUDES EXPRESS FEATURES PLUS //** 8-way power driver's seat • SIRIUS<sup>®</sup> Satellite Radio<sup>(3)</sup> with one-year subscription • Sound system – six speakers • Automatic temperature control • Rear assist handles • Electronic Vehicle Information Center (EVIC) • Illuminated visor/vanity mirrors • Leather-wrapped shift knob with chrome insert • Leather-wrapped steering wheel • Premium headliner with front and rear aimable LED lights • Trunk mat and decklid liner

**AVENGER MAINSTREET FABRICS //**

- E) Momentum Cloth Inserts – in Black
- F) Wallace II Cloth Bolsters – in Black
- G) Momentum Cloth Inserts – in Light Frost Beige
- H) Wallace II Cloth Bolsters – in Light Frost Beige





AVENGER HEAT

**AVENGER HEAT INCLUDES EXPRESS FEATURES PLUS //** 8-way power driver's seat • Media Center 430 • SIRIUS® Satellite Radio<sup>[3]</sup> with one-year subscription • Automatic temperature control • Rear assist handles • Electronic Vehicle Information Center (EVIC) • Illuminated visor/vanity mirrors • Premium headliner with front and rear aimable LED lights • Leather-wrapped shift knob • Leather-wrapped steering wheel • Red accent stitching on center console, door trim armrests, and dash pads • Sound system – six speakers

**AVENGER HEAT FABRICS //**

- I) Momentum Cloth Inserts – in Black/Red
- J) Wallace II Cloth Bolsters – in Black



I



J



AVENGER LUX

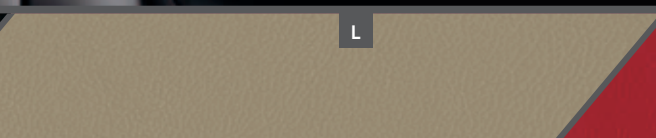
**AVENGER LUX INCLUDES EXPRESS FEATURES PLUS //** Uconnect® Phone • Media Center 430 • SIRIUS Satellite Radio<sup>[3]</sup> with one-year subscription • Rearview auto-dimming mirror • Heated front seats • 8-way power driver's seat • Automatic temperature control • Rear assist handles • Electronic Vehicle Information Center (EVIC) • Illuminated visor/vanity mirrors • HomeLink Universal Garage Door Opener • Leather-wrapped shift knob • Premium headliner with front and rear aimable LED lights • Leather-wrapped steering wheel • Leather-trimmed seating • Remote USB port

**AVENGER LUX FABRICS //**

- K) Royale Leather trim with Caprice Vinyl – in Black with Light Slate Gray stitching
- L) Royale Leather trim with Caprice Vinyl – in Light Frost Beige
- M) Royale Leather trim with Caprice Vinyl – in Radar Red with Black stitching



K



L



M



[DODGE.COM/AVENGERS](http://DODGE.COM/AVENGERS)



**5 YEAR / 100,000 MILE  
POWERTRAIN WARRANTY**

**DODGE LIFE**

Chrysler  
**Service  
Contracts**



**Uconnect**

**SIRIUS**  
SATELLITE RADIO  
THE BEST RADIO ON RADIO™

**AUTOMOBILITY  
PROGRAM**  
CHRYSLER | JEEP | DODGE | RAM



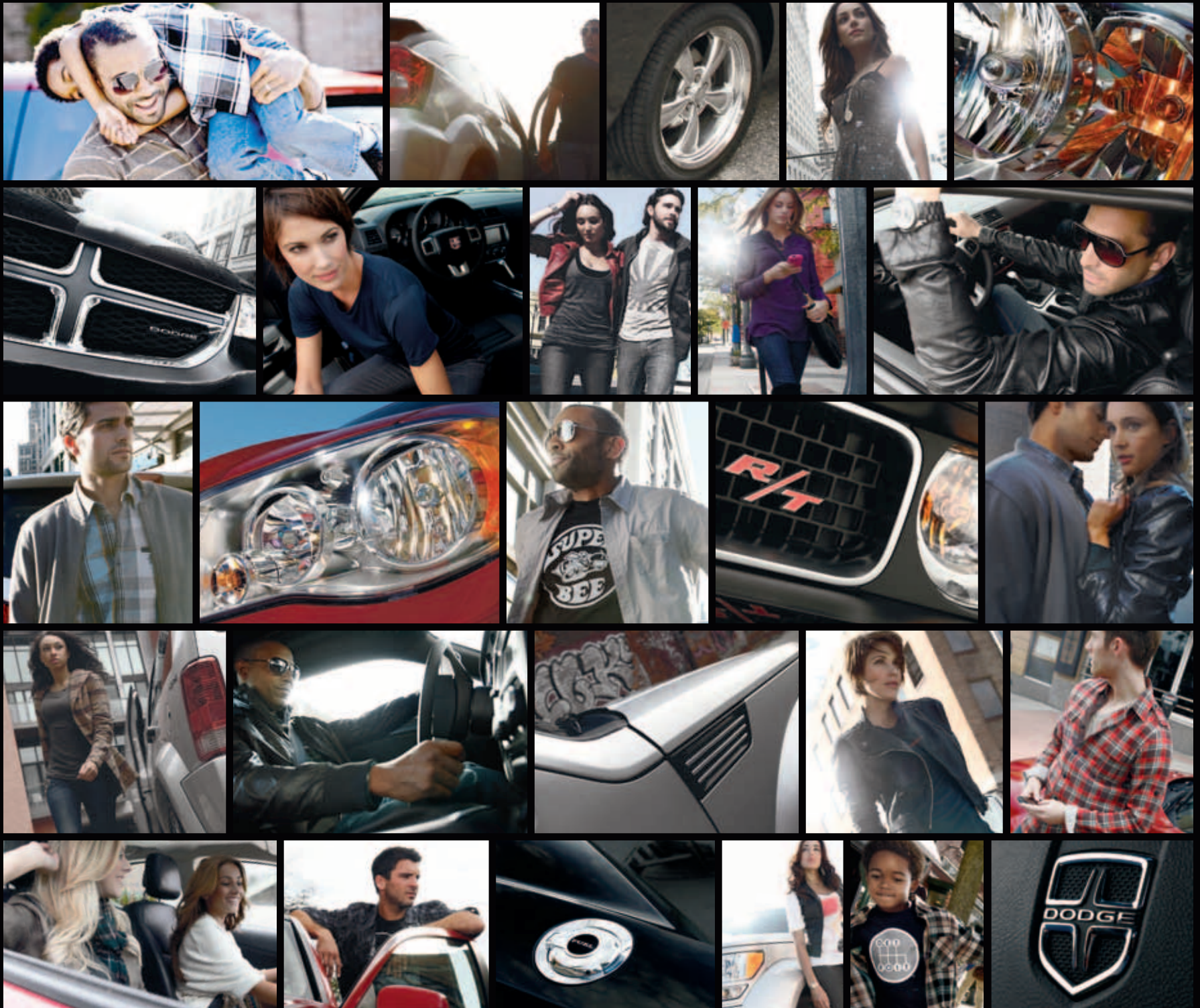
<sup>11</sup>Phone must support Bluetooth Phone Book Access Profile (PBAP). <sup>12</sup>The Uconnect Web feature is not intended for use by the driver while the vehicle is in motion. <sup>13</sup>Required SIRIUS Radio, Traffic, Travel Link, and Backseat TV subscriptions sold separately after trial period. Other fees and taxes will apply. SIRIUS Traffic and Travel Link available in select markets; Backseat TV subscription not available without SIRIUS Radio subscription; and SIRIUS data displays and individual product availability vary by hardware equipment. SIRIUS service available only to those at least 18 years of age in the 48 contiguous U.S.A., DC, and Puerto Rico (with coverage limitations), while Internet radio is also available in AK, HI, and PR. Fees and programming subject to change. Service automatically renews and you will be billed, at then current rates, unless you call 1-888-539-7474 to cancel. Subscriptions governed by SIRIUS Terms and Conditions available at [sirius.com](http://sirius.com). Service available in Canada; see [www.siriuscanada.ca](http://www.siriuscanada.ca). <sup>14</sup>Requires Uconnect Phone. <sup>15</sup>No system, no matter how sophisticated, can repeal the laws of physics or overcome careless driving actions. Performance is limited by available traction, which snow, ice and other conditions can affect. When the ESC warning lamp in the speedometer flashes, the driver needs to use less throttle and adapt speed and driving behavior to prevailing road conditions. Always drive carefully, consistent with conditions. Always wear your seat belt. <sup>16</sup>The Advanced Front Air Bags in this vehicle are certified to the new federal regulations for advanced air bags. Children 12 years old and younger should always ride buckled up in a rear seat. Infants in rear-facing child restraints should never ride in the front seat of a vehicle with a passenger front air bag. All occupants should always wear their lap and shoulder belts properly. <sup>17</sup>Check Owner's Manual for hitch types, load capacity and heavy-duty equipment required. Do not exceed the rated tow capacity of vehicle as equipped. Towing may require some items not supplied by Mopar. <sup>18</sup>Always sit properly with the head restraint properly adjusted. Never place anything in front of the head restraint.

**5-YEAR/100,000-MILE POWERTRAIN WARRANTY** Transferable. See dealer for a copy of limited warranty. Includes towing to an authorized dealer. **3/36 BASIC LIMITED WARRANTY** Dodge vehicles are covered by a Chrysler Group LLC 3-Year or 36,000-Mile Basic Limited Warranty. See your dealer for a copy of this limited warranty. Excludes normal maintenance and wear items. **AUTOMOBILITY** Chrysler Group LLC's Automobility program provides aftermarket reimbursement incentives on adaptive vehicle upfit equipment in order to help provide safe and reliable vehicle modifications to enhance accessibility for all people. For more information, call (800) 255-9877 or visit [chryslerautomobility.com](http://chryslerautomobility.com). Chrysler has a vested interest in your satisfaction with your new vehicle. **CHRYSLER SERVICE CONTRACTS** offer extended service plans to help ensure that you'll enjoy your vehicle for many years down the road ... for just pennies a day. For more information, see your Dodge dealer, call (800) 442-2666 or visit [dodge.com/csc](http://dodge.com/csc). **AUTHENTIC DODGE ACCESSORIES BY MOPAR** are designed specifically for your Dodge vehicle for exceptional fit, finish, and performance. Visit your dealership or [mopar.com](http://mopar.com). **UCONNECT®** With Uconnect, you're always connected — to people, places, music, movies, and the Internet. **SIRIUS® SATELLITE RADIO** delivers over 130 channels, including 100% commercial-free music, sports, news, talk, entertainment, traffic and weather. Factory-installed SIRIUS Satellite Radio includes a one-year subscription. For more information, go to [sirius.com](http://sirius.com). **DODGE LIFE** is a handpicked collection of items bearing the Dodge name — from Motorsports apparel and collectible die-cast models to the hottest items for work and weekend fun. It's all found at [dodge.com/life](http://dodge.com/life). **HONORING THOSE WHO SERVE** Chrysler Group LLC proudly supports the members of the U.S. Armed Forces and their families.

About this catalog: Since the time of printing, some of the information you'll find in this catalog may have been updated. Ask your dealer for details. Some of the equipment shown or described throughout this catalog is available at extra cost. Specifications, descriptions, illustrative materials, and all competitive comparisons contained herein are as accurate as known at the time this publication was approved for printing. Chrysler Group LLC reserves the right to discontinue models at any time or change specifications without notice and without incurring obligation. All options are required in combination with other options. For the price of the model with the equipment you desire, or verification of specifications contained here, see your Dodge dealer. Dodge, Mopar, Pentastar, Avenger, Avenger Express, Avenger LUX, Sentry Key and Uconnect are registered trademarks of Chrysler Group LLC. SIRIUS, XM, and all related marks and logos are trademarks of SIRIUS XM Radio Inc. and its subsidiaries. Bluetooth is a registered trademark of Bluetooth SIG, Inc. HomeLink is a registered trademark owned by Johnson Controls, Inc. Boston Acoustics and the Boston Acoustics logo are registered trademarks of Boston Acoustics, Inc. All rights reserved. iPod is a registered trademark of Apple Inc. Garmin and the Garmin logo are registered trademarks of Garmin, Ltd. or subsidiaries and are registered in one or more countries, including the U.S.

Join fellow Dodge enthusiasts and tell your story by posting comments, participating in discussions, and sharing your photos and videos. Join our community on Facebook, follow us on Twitter, and check us out on YouTube.





**DODGE**   
800-4ADODGE // DODGE.COM

Dodge is a registered trademark of Chrysler Group LLC.  
FORM NO. 74-383-2105\_10/10 (59M)\_LITHO IN U.S.A.