



2014 JEEP® WRANGLER

Jeep®



CONNECT WITH THE WORLD
FROM THE GROUND UP.
EXPLORE WITH THE UNIQUE
CAPABILITY, COMFORT
AND TECHNOLOGY OF
JEEP® WRANGLER AND ENJOY
A REVEALING POINT OF VIEW.



RUBICON® SHOWN IN BILLET SILVER METALLIC WITH OPTIONAL HALF-DOORS.



SPORT UNLIMITED SHOWN IN COPPERHEAD PEARL.

TAKE THE ROCKY ROAD TO FREEDOM.



IT'S THE RECOGNIZED STANDARD FOR OFF-ROAD CAPABILITY. THE TRAIL RATED® FORTITUDE OF JEEP® WRANGLER HELPS YOU NAVIGATE THE WORLD AND ITS WORRIES. ON THE ROAD OR ON THE TRAIL, WRANGLER WORKS TO SAFELY GET YOU THROUGH THE CHALLENGES MOTHER NATURE SETS BEFORE YOU.



TRACTION

ARTICULATION

MANEUVERABILITY

GROUND CLEARANCE

WATER FORDING¹

TAKE THE ROCKY ROAD TO FREEDOM.



IT'S THE RECOGNIZED STANDARD FOR OFF-ROAD CAPABILITY. THE TRAIL RATED® FORTITUDE OF JEEP® WRANGLER HELPS YOU NAVIGATE THE WORLD AND ITS WORRIES. ON THE ROAD OR ON THE TRAIL, WRANGLER WORKS TO SAFELY GET YOU THROUGH THE CHALLENGES MOTHER NATURE SETS BEFORE YOU.



FIVE PERFORMANCE TEST CATEGORIES are designed to prove your Jeep, 4x4 vehicle's Trail Rated® capability.

» **TRACTION.** Trail Rated® traction helps you maintain controlled forward motion on snowy back roads and icy bridges. You can climb steep sand dunes and master muddy two-tracks. Others may fear untamed terrain, but your Trail Rated Wrangler has the traction within to master all kinds of topography and driving conditions.

» **ARTICULATION.** Wrangler's suspension systems enhance on- and off-road performance by maximizing flexibility, axle articulation and wheel travel. This standard indicates that when one or more wheels are elevated, the Jeep 4x4 system helps the others stay on the ground longer to keep you moving.

» **MANEUVERABILITY.** Every Wrangler is born with the athletic ability to navigate narrow gaps, dodge emergency situations and avoid cosmetic damage to underbody sills, thanks to precision steering and optimized wheelbases.

» **GROUND CLEARANCE.** Head out knowing that your Trail Rated Wrangler has optimized approach, departure and breakover angles designed to clear logs, rocks and uneven ground. Your undercarriage is protected, too, with forged skid plates that cover your vehicle's most valuable underbody elements.

» **WATER FORDING.^{1*}** Traverse that stream with confidence, thanks to additional electrical and body seals, plus a high air-intake location. Wrangler has the capability to safely manage in up to 30 inches of water. Always inspect all waterways before proceeding, just to make sure there are no unforeseen pitfalls.

*A note about this brochure. All disclaimers and disclosures can be found inside the back cover.



THE HEART AND SOUL OF WRANGLER BEATS WITH A FIERCE PASSION TO GO ANYWHERE, DO ANYTHING.® AND ITS GUTS ARE BUILT TO DELIVER ON THIS PROMISE. TAKE THE WORLD BY THE WHEEL AND HEAD OUT TO EXPLORE, KNOWING THIS MOST-CAPABLE FREEDOM MACHINE ALWAYS HAS YOUR BACK.



**PENTASTAR®
3.6L V6 ENGINE**



**5-SPEED AUTOMATIC
TRANSMISSION WITH AUTOSTICK.**

ROCK-TRAC® 4x4 SYSTEM.

At the heart of the masterful capability of Wrangler Rubicon® beats one of the world's foremost four-wheel-drive systems. It delivers extreme rock-crawling ability, thanks to the 4:1 low-gear ratio. Rock-Trac's low crawl speed makes it easy to ascend or descend sharp inclines and to crawl over obstacles. Available.

PENTASTAR® 3.6L V6 ENGINE WITH VARIABLE VALVE TIMING (VVT).

This engine delivers the power to match Wrangler's legendary brawn. Boasting 285 horsepower with 260 lb-ft of torque, this efficient road master is cast from lightweight aluminum and sips regular-octane gas. Electronic Throttle Control (ETC) makes driving over rough terrain in 4WD-low (4LO) mode that much smoother. Standard.

Gain exceptional efficiency and out-of-the-gate performance. An aggressive first-gear ratio offers ample launch power without compromise. Electronically controlled engine torque helps you move smoothly through every gear. The AutoStick feature offers driver-selectable control to manually change gears. Available.

LEGENDARY 4WD.

Command-Trac® 4WD system employs the NV241 GII transfer case, delivering smooth and quiet part-time shift-on-the-fly operation, and comes standard on Sport and Sahara® models. For those who demand ultimate capability, Wrangler Rubicon®, with its standard Rock-Trac® 4WD system, delivers radical crawling strength at low speeds for greater control over tough terrain.

ROCK SOLID UNDERPINNINGS.

Wrangler is built with a body-on-frame design that's fully boxed for strength, stiffness and durability. Stamped steel skid plates for the fuel tank and transfer case help protect Wrangler's belly when battling boulders. Extra-tough body-mounted rails provide additional protection on Wrangler Rubicon.

SUPERHERO SUPPORT.

The brawny strength of Wrangler's standard Dana® 44 heavy-duty rear axle holds true over the most punishing trails. Additional support is offered on Rubicon, with its front heavy-duty Dana 44 and tunable monotube shock absorbers, offering secure, firm support on the rocks and a more relaxed feel when traveling at higher speeds.



GRABS THE GROUND AND DOESN'T LET GO.

TRU-LOK® LOCKING DIFFERENTIALS.

Front and rear electronic-locking differentials balance speed between left and right wheels, maintaining forward momentum for the ultimate in traction. An instrument panel-mounted rocker switch can lock either the rear or both axles. (Standard only on Rubicon.®)

ROCK-TRAC® TRANSFER CASE.

A 4:1 low-gear ratio allows Wrangler Rubicon to crawl at a low speed for greater control and increases the amount of torque available at the wheels. (Standard only on Rubicon.)

ROCK RAILS.

Extra-tough body-mounted rails provide additional rocker panel protection. (Standard only on Rubicon.)

TWO-PIECE STRUCTURAL OIL PAN.

A two-piece oil pan provides a steel lower portion for impact resistance with an upper aluminum section for improved weight savings.

HEAVY-DUTY SUSPENSION.

Solid axles with locating arms, track/stabilizer bars, coil springs, front steering damper and tunable monotube shock absorbers are firm at low speeds and more relaxed at higher speeds. (Standard on Sahara.® A performance suspension is standard on Rubicon.)

DANA® 44 HEAVY-DUTY SOLID AXLES.

Durability comes from heavy shafts, stiff housings, large pinion bearings and above-center pinion mountings for smoother, quieter operation. (Rear Dana 44 standard on all models. Front Dana 44 standard only on Rubicon.)

BEST-IN-CLASS GROUND CLEARANCE?²

Wrangler Rubicon runs over the competition with 10 inches of ground clearance, helped, in part, by its standard 32-inch BFGoodrich® off-road tires.

BODY-ON-FRAME DESIGN.

Built with a frame that's fully boxed for strength, stiffness and durability.

KEEP STEERING ON COURSE.

Wrangler features a steering linkage and a recirculating-ball steering gear. Its robust, cross-link geometry helps provide one of the stiffest possible linkage systems in a solid-axle platform for steering precision.

FRONT SWAY BAR DISCONNECT SYSTEM.

Flip a switch and the sway bar disengages when driving under 18 mph in 4WD-low (4LO) mode. This allows the front suspension to travel up to 25 percent farther on Rubicon than Sport and Sahara models. (Standard only on Rubicon.)

TORQUE TO TOW.

Wrangler Unlimited can confidently tow up to 3,500 lb when properly equipped with the factory-installed Max Trailer Tow Group.

BOLDER, BADDER AND READY TO KICK SOME SERIOUS TRAIL, RUBICON® X IS NOT FOR THE FAINT OF HEART. DESIGNED TO THRILL HARD-CORE FANS, THIS GLORIOUS OFF-ROAD WARRIOR CONQUERS MUD, HILLS AND BOULDERS WITH EQUAL APLOMB.



RUBICON® X

Ride strong in Wrangler Rubicon® X as it forges ahead with the strength of the brawny Pentastar® 3.6L V6 engine, 6-speed manual transmission and the formidable Rock-Trac® 4x4 system with Tru-Lok® front/rear locking differentials and front sway bar disconnect system. The X package adds a winch-capable premium steel front bumper with removable end caps, a premium steel rear bumper, a vented power dome hood, front and rear Red tow hooks, unique rock rails, plus the premium Sunrider® Soft Top. All of which help give X its extra appeal.



THE QUEST FOR
OPEN-AIR FREEDOM
LEADS YOU TO PLACES
OTHERS ONLY DREAM
OF REACHING.



THE HEART OF ADVENTURE.

Wrangler's roomy cabin works hard as command-central for taking control of its legendary capability, adding advanced technology and fine features for comfortable travel. The Tip 'n Slide front-passenger seat on Wrangler 2-door gives easy access to the second row. The available leather-wrapped steering wheel holds convenient hands-free buttons for EVIC, audio and speed control. Easily clean away leftover interior mud and grime, thanks to Wrangler's renowned wash-out interior with its removable carpet and drain plugs. Choose your audio and communication system with offerings from Uconnect,[®] including hands-free Voice Command, Navigation and WiFi options. Turn your four wheels into a seven-speaker hard-beating boom box with the available Alpine[®] sound system and its 368-watt amplifier. With Wrangler's available leather-trimmed interior, adventures gain a higher profile.



BE SEATED.

Wrangler's interior seat fabrics and comfort-designed seats stand up to all kinds of sitting down. With plenty of cushion and support, you've got more stamina to keep on going.

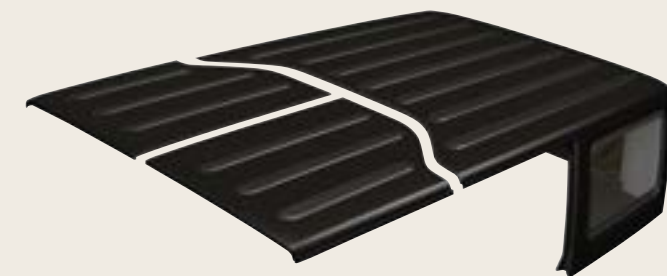
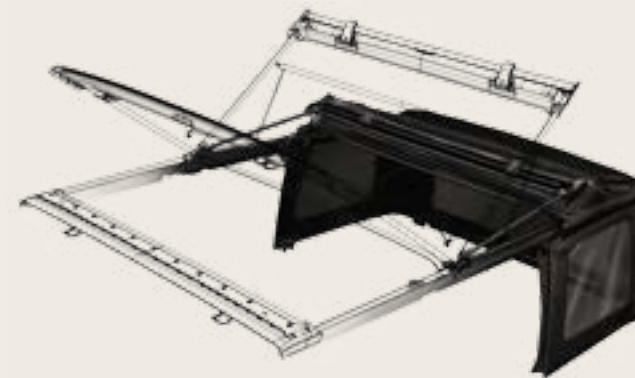
INNER GLOW.

Convenient interior courtesy lights illuminate the front footwells and cup holders, while an available electrochromatic rearview mirror automatically darkens to help eliminate the blinding glare of headlamps.

WEATHER-RESISTANT SURFACES AND WASH-OUT INTERIOR.

Like your favorite canine, Wrangler loves a spray-down. Go out and have some good, dirty fun, then grab the hose, remove Wrangler's drain plugs, rinse and repeat.

LIKE YOU, WRANGLER IS A TRUE ORIGINAL. REMOVE THE DOORS,³ FOLD DOWN THE WINDSHIELD, OPEN THE SUNRIDER[®] SOFT TOP AND SEE THE WORLD FROM A POINT OF VIEW THAT REMOVES ALL BOUNDARIES BETWEEN YOU AND THE GREAT OUTDOORS.



SUNRIDER[®] SOFT TOP utilizes special three-ply material that's quiet, watertight and easy to fold away. Standard.

PREMIUM SUNRIDER SOFT TOP adds durability and sound dampening for a quieter ride. Plus, a dust blocker helps keep your Premium Soft Top in tip-top shape and always easy to wash. Available.

FREEDOM TOP[®] HARDTOP is strong, secure and available in the exterior paint color of your Wrangler Sahara[®] or Rubicon[®]. A three-piece modular design lets you bring in the sun as you see fit. Available.

REMOVABLE FULL-FRAMED DOORS AND FOLD-DOWN WINDSHIELD.³ Every Wrangler arrives ready for a full-on, open-air experience.



RUBICON[®] UNLIMITED SHOWN IN FLAME RED.

THE SKY IS NOT
THE LIMIT.



////ALPINE

IDEAL LOCATION. The optional seven-speaker Alpine® Premium Sound System creates a realistic sound stage by utilizing a high-powered eight-channel 368-watt amplifier, an eight-inch subwoofer, two tweeters and four 6.5-inch speakers — two located in the overhead sound bar. Alpine is known for offering outstanding tonal balance and definition. Welcome to a new wave in sound engineering.

HERITAGE RIDES STRONG.

The iconic design elements of today's Wrangler were born during the great pursuit of freedom, when hinges and latches helped keep the original Jeep® Willys running strong. These features have been incorporated in every Wrangler that has trounced a boulder-strewn trail ever since. The 2014 Jeep Wrangler moves forward, integrating state-of-the-art technology and modern creature comforts with this time-honored heritage. Yet still, when Wrangler freedom-drivers head out to parts unknown, with the top off, doors removed² and windshield folded down, their grab bars are trusted to help make the ride as iconic as ever.

BUILT WITH HINGES,
LATCHES AND BOLTS.
DRIVEN WITH
HARD-CORE PASSION.





INTERACTION. THE UCONNECT® SYSTEM BRINGS A RANGE OF COMMUNICATION AND ENTERTAINMENT SERVICES STRAIGHT INTO YOUR VEHICLE, ALL BUNDLED TOGETHER WITHIN A ROBUST UCONNECT SYSTEM. WITH SO MANY CONVENIENT OPTIONS TO CHOOSE FROM, DISCOVER HOW YOU WOULD LIKE TO CONNECT AT DRIVEUCONNECT.COM



PHONE. Plans can change en route. Safely spread the word with a hands-free phone call. Pair up to your Bluetooth® enabled phone and voice commands allow you to easily "call Judy" or "redial" as you keep both hands on the wheel. This clever system is also smart enough to synchronize with your Bluetooth compatible phone's contacts⁵ — up to 1,000 entries — every time you get into your vehicle.



VOICE COMMAND. It simplifies driving by letting you keep your eyes on the road and your hands on the wheel. Use your voice to select AM/FM radio stations or SiriusXM Satellite Radio® channels or make calls, select navigation destinations or show local fuel prices. This smart technology can understand commands in English, French and Spanish.



WiFi. Put the power of high-speed Internet in your vehicle with Mopar® Web®. Effortlessly connect any WiFi enabled device to the Internet at broadband speeds, making your vehicle a mobile hotspot. Passengers can use multiple devices at the same time. There's no need for cell cards or software with this unique Authentic Accessory by Mopar — it's all wireless. Subscription required; sold separately.



NAVIGATION. Head out in the right direction with Uconnect® and its available, enhanced GPS wayfinding systems. Opt for the Uconnect 730N radio for enhanced GPS navigation and destination entry via Voice Command. Find a local restaurant or attraction, and get directions with a simple request. Lane assist and junction view are also displayed. The available Uconnect 430N (RHB) system features the notable Garmin® GPS intuitive interface and navigation with lane guidance.



ENTERTAINMENT. Today's soundtrack? It can change, moment by moment, and Uconnect follows your lead. Listen to your favorite playlist from a connected device, then flip to a news or comedy station or the latest sports scores. SiriusXM® lets you tag and rewind and play favorite songs or artists. With the SiriusXM All Access package, you get every channel available on your satellite radio, along with the freedom to listen anywhere with SiriusXM Internet Radio.⁴ It doesn't get any better than this. Your first year of service is included. Visit www.siriusxm.com for all of the details.



SIRIUSXM TRAVEL LINK.⁴ Access a wealth of information at your fingertips, including national and local weather reports, local gas prices, in-game and final sports scores, weekly movie times and even local ski slope conditions. Your first year of service is included.



ADVENTURISTS TAKE NOTE:
GETTING OUT THERE IS
ALWAYS FUN, BUT TAKING
ALONG YOUR GEAR
COMPLETES THE PICTURE.
WRANGLER IS DESIGNED TO
ACCOMMODATE WITH ITS
ABUNDANT STORAGE AND
CONFIGURATION OPTIONS.



SPORT SHOWN IN COPPERHEAD PEARL.





REMOVABLE FOLD AND TUMBLE REAR BENCH SEAT.

Standard on two-door models, this seat easily tumbles with spring assist to make more room for cargo. Four-door models come standard with a split-folding rear seat.

STOW YOUR STUFF.

You'll appreciate mesh net storage in all doors and a locking glove compartment for keeping smaller items secure and within reach.

LOCKABLE CENTER CONSOLE STORAGE.

With open-air freedom comes a safe place to store your goods. An inner tray helps keep things organized within the large bin.

REAR CARGO MAT AND STORAGE BIN.

A reversible cargo mat protects your carpet while a storage bin beneath the rear floor features a lift-out tray with convenient storage for door and hardtop bolts.

CARGO ROOM.

You, your gear and your four-footed friends have ample room to roam. Two-door models give you generous cargo space with the rear seat removed, while four-door models boast a cavernous 70 cu ft of cargo space with the rear seats folded down.



Properly secure all cargo.

SPORT SHOWN IN COPPERHEAD PEARL.





IT'S NOT A MATTER OF WEATHER, BUT WHEN.

ADVANCED MULTISTAGE FRONT AIR BAGS⁷

These standard air bags provide nearly instantaneous occupant protection by matching air bag output to crash severity. Standard.

SUPPLEMENTAL FRONT SEAT-MOUNTED SIDE AIR BAGS⁷

These deploy from the outboard side of each front seat to enhance protection of the driver and front-seat passenger in certain impacts. Each side air bag has its own sensor to trigger the air bag on the side where the impact occurs. Available.

SENTRY KEY[®] ENGINE IMMOBILIZER.

A unique embedded key code matched only to your vehicle helps keep your Wrangler safely where it belongs. Standard.

ENHANCED ACCIDENT RESPONSE SYSTEM (EARS).

This system makes it easier for emergency personnel to see and reach occupants in the event of an accident, turning on interior lighting, flashing hazard lamps and unlocking power doors after air bag deployment. It also shuts off the flow of fuel to the engine. Standard.

HILL START ASSIST (HSA) AND HILL DESCENT CONTROL.

Standard HSA works to prevent Wrangler from rolling when starting on an uphill gradient. It holds the vehicle stationary for two seconds after the driver's foot is removed from the brake pedal, allowing time to apply the throttle. The available Hill Descent Control is packaged with the 5-speed automatic transmission and diligently works to help Wrangler navigate steep declines at a steady and consistent speed.

ELECTRONIC STABILITY CONTROL (ESC)⁸

This advanced system is designed to assist drivers in maintaining control of their vehicle at all times. It utilizes hydraulic brake assist, traction control, Electronic Roll Mitigation (ERM) and trailer sway damping to constantly monitor driver input against the vehicle's actual course. If needed, ESC automatically brakes and/or reduces engine torque, while ERM estimates the potential for wheel lift, reducing engine power and applying brakes if needed. Trailer sway damping detects sway unique to trailering and engages the brakes to slow the vehicle, increasing brake force to one side of the vehicle to help counteract the sway from the trailer. ESC has three modes: Full-On, Partial-On (shuts off traction control) and Full-Off (ideal for off-road driving). Standard.

HEATED POWER EXTERIOR MIRRORS.

Melt snow and ice off sideview mirrors as you warm up your interior. They also help to keep your mirrors icicle-free as you drive. Available.

ENERGY-ABSORBING FRONT RAIL EXTENSIONS.

Collapsible hydroformed front rail tips offer low-speed protection and can be serviced after impact events of up to 8 mph. Standard.

HALOGEN HEADLAMPS AND FOG LAMPS.

These bright sources of light improve down-road visibility at night or during inclement weather. Standard.



AUTHENTIC JEEP® ACCESSORIES.

Choose Mopar® for quality parts and accessories made to custom-fit your Wrangler. Mile after mile, you'll keep going strong with our expert technicians, genuine parts, Mopar Vehicle Protection™ plans, Express Lane Service and online Mopar Owner Connect™ Web site (register at owners.jeep.com). See your Jeep dealer for all the latest parts and accessories. You can learn more about the world of Mopar and all it has to offer at mopar.com



JK-8 TRUCK CONVERSION KIT.



SATIN BLACK GRILLE, WARN® WINCH, OFF-ROAD FRONT BUMPER, SKID PLATE, TOW HOOKS AND CLASSIC FIVE-HOLE WHEEL.



RUBICON® X HOOD.



SATIN BLACK ROCK RAILS.



PREMIUM REAR OFF-ROAD BUMPER AND TIRE CARRIER.



RECTANGULAR 4-LED WINDSHIELD-MOUNTED OFF-ROAD LIGHTS.



ALL-WEATHER HEAVY-DUTY MATS.



WINDOW STORAGE BAG.



CHROME GRILLE, PREMIUM CHROME WHEELS, FRONT AND REAR CHROME TUBULAR BUMPERS, CHROME TUBULAR SIDE STEPS, CHROME MIRROR COVERS, CHROME DOOR HANDLE INSERTS, CHROME FUEL FILLER DOOR, CHROME TAILLAMP GUARDS, CHROME DOOR HINGE COVERS, STAINLESS STEEL HOOD LATCHES AND WINDSHIELD BRACKETS.



SUN BONNET.



WATER-RESISTANT FRONT AND REAR SEAT COVERS.



SUSPENSION LIFT KIT.

THE CORPS OF HARD CORE.

Mopar® and the Jeep® brand have forged a radical partnership resulting in a portfolio of factory-engineered products designed to enhance off-road performance. From winches to axles, from suspensions to rock rails, these extreme parts have been gathered together to make it easier to kick your off-road capability up a notch or three. The Mopar Off-Road division dedicates its full attention to developing this line of serious components that give hard-core Jeep 4WD enthusiasts the fortitude to go wherever the going gets tough.



(1) Do not attempt water fording unless depth is known to be less than 30 inches. Traversing water can cause damage that may not be covered by the new vehicle warranty. Always off-road responsibly in approved areas. (2) Based on Ward's small sport/utility vehicle segmentation (excludes Chrysler Group LLC vehicles). (3) Be sure to follow all instructions in Owner's Manual for removal of top and doors, and lowering of windshield. Driving with doors off and windshield down is for off-road use only. (4) SiriusXM service requires a subscription, sold separately, after 12-month trial included with vehicle purchase. If you decide to continue your SiriusXM service at the end of the trial subscription, the plan you choose will automatically renew and bill at the then-current rates until you call SiriusXM at 1-866-635-2349 to cancel. See our Customer Agreement for complete terms at siriusxm.com. Sirius satellite service is available only to those at least 18 and older in the 48 contiguous United States, D.C. and P.R. (with coverage limitations). SiriusXM Traffic available in select markets. See siriusxm.com/traffic for more information. Sirius, XM and all related marks and logos are trademarks of SiriusXM Radio Inc. (5) Phone must support Bluetooth Phone Book Access Profile (PBAP). (6) Mopar Web feature is not intended for use by the driver while the vehicle is in motion. Always drive carefully. Subscription required. (7) The Advanced Front Air Bags in this vehicle are certified to the new U.S. federal regulations for advanced air bags. Children 12 years old and younger should always ride buckled up in a rear seat. Infants in rear-facing child restraints should never ride in the front seat of a vehicle with a passenger front air bag. All occupants should always wear their lap and shoulder belts properly. (8) No system, no matter how sophisticated, can repeal the laws of physics or overcome careless driving actions. Performance is limited by available traction, which snow, ice and other conditions can affect. When the ESC warning lamp flashes, the driver needs to use less throttle and adapt speed and driving behavior to prevailing road conditions. Always drive carefully, consistent with conditions. Always wear your seat belt.

This brochure is a publication of Chrysler Group LLC. All product illustrations and specifications are based upon current information at the time of publication approval. Chrysler Group LLC reserves the right to make changes from time to time, without notice or obligation, in prices, specifications, colors, materials and to change or discontinue models, which are considered necessary to the purpose of product improvement or for reasons of design and/or marketing. Chrysler, Jeep, the Jeep Grille, Rubicon, Sahara, Wrangler, J-4i, Command-Trac, Freedom Top, Go Anywhere, Do Anything, Willys, Mopar, Pentastar, Rock-Trac, Sentry Key, Trail Rated, Tru-Lok, and Uconnect are registered trademarks and Mopar Vehicle Protection and Mopar Owner Connect are trademarks of Chrysler Group LLC. Alpine and the Alpine logo are registered trademarks of Alpine Electronics, Inc. BFGoodrich is a registered trademark of Goodrich Corporation. All rights reserved. Bluetooth is a registered trademark of Bluetooth SIG, Inc. Dana is a registered trademark of Dana Corporation. Garmin and the Garmin logo are registered trademarks of Garmin, Ltd. or its subsidiaries and are registered in one or more countries, including the U.S. Goodyear is a registered trademark of The Goodyear Tire & Rubber Company. Sirius, XM and all related marks and logos are trademarks of SiriusXM Radio Inc. Sunrider is a registered trademark of Bestop, Inc. WARN is a registered trademark of Warn Industries, Inc. ©2013 Chrysler Group LLC. All rights reserved.

BEGIN WITH THE
END IN MIND.

