



Silver Anniversary Models

DOTTA AUTO SALES
CHRYSLER - PLYMOUTH
R. D. No. 3 - Bangor, Pennsylvania
Phone - Pen Argyl 298

THE *Beautiful* CHRYSLER

D. Distinctive...
D. Distinguished...

*The finest
of a fine line!*



The Silver Anniversary Chrysler
Convertible Coupe

Beautiful to look at—beautiful to drive and to ride in—fleet running and smooth going—proud as a Kentucky Thoroughbred! This superb body style is available on Windsor and New Yorker Models.

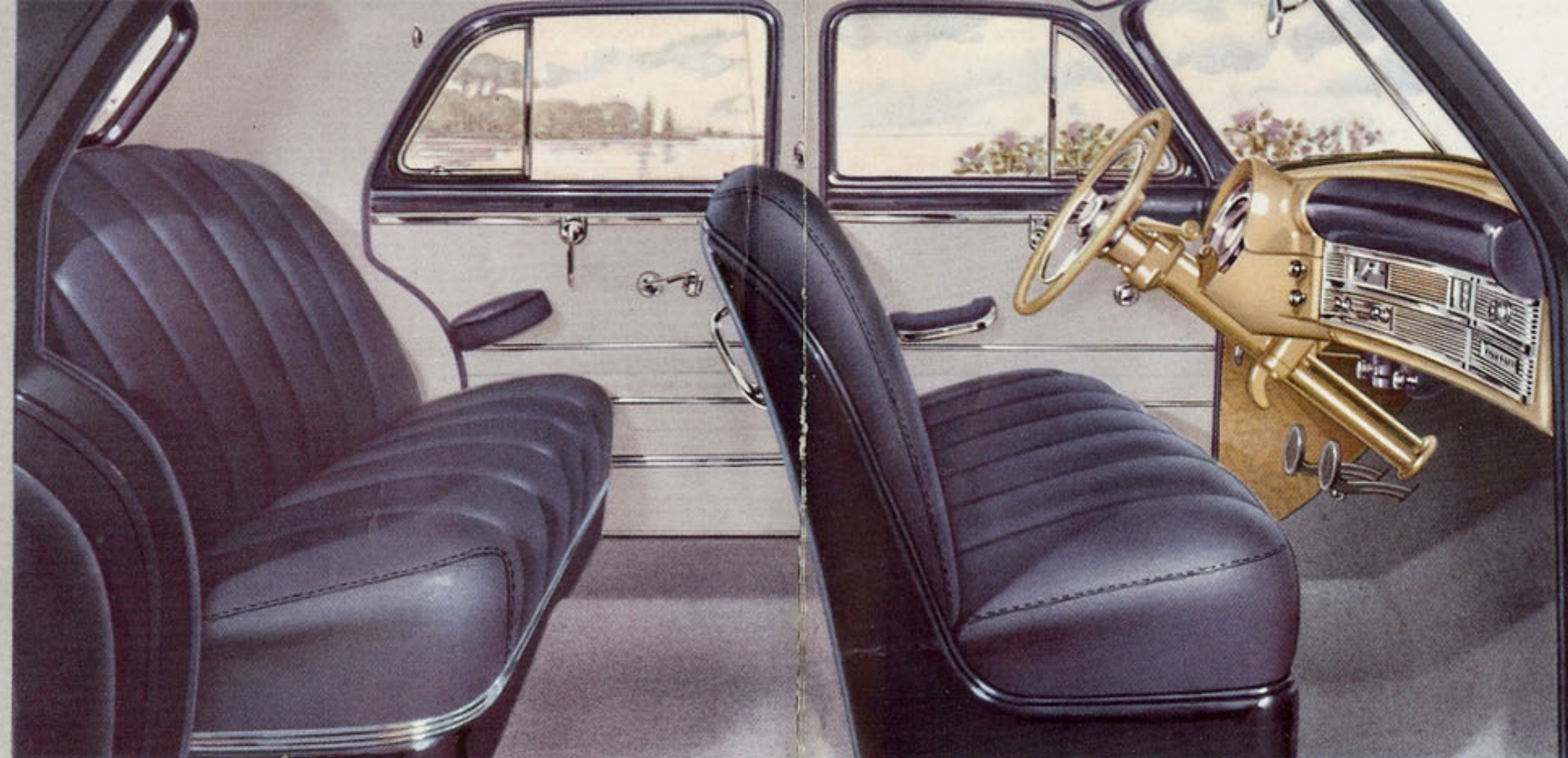
Beauty with Comfort

Here's the one motor car that was designed *from the inside out!* Beauty with your comfort in mind! From the very first blueprint, Chrysler engineers planned these beautiful Silver Anniversary Models with comfortable, spacious interiors so you would have ample legroom, headroom, and shoulder room.

How well they succeeded can only be appreciated when you actually sit in these wonderful models. Try it! Discover for yourself the wide-armed welcome of the full-open doors. Enjoy the extra-wide chair-height seats, scientifically designed for relaxation. Take note of the "six-footer" legroom, the "hat-wearing" headroom. And revel in the luxurious comfort of Airfoam cushions! Here is living-room comfort on wheels!

Find out for yourself, too, the wonderful visibility of these Chryslers. Actually get behind the wheel and look over the hood, out the side windows, and into the rear-view mirror! You will marvel at a larger, wider windshield, a larger rear-view mirror—a wider, higher rear window—and exceptionally large side windows. You will discover, also, that the top of the steering wheel is low enough to see over. And that the hood is shorter so that you have a better picture of the road ahead.

But this is only part of the wonderful Chrysler story! For around all these features of luxury, comfort and visibility, Chryslers engineers and stylists have created an entirely new beauty! For the interior, there are tailored-to-taste appointments and gorgeous colored fabrics. For the exterior, there is a distinctive new grille, massive channel-type bumpers and a stylish bustle-back rear. Every line of this new model proudly speaks of elegance and grace! This Chrysler Silver Anniversary Model is truly the style leader of the fine car field!



Here is a richness of color that defies the rainbow—a solidness of comfort that challenges the easy chair. Air-foam seat cushions are standard on all models, and you choose from a wide variety of finest-quality broadcloth for your interior color scheme.

Sparkling beauty, greater safety and driving ease are hallmarks of the new curved Safety-Cushion dash panel. All instruments are conveniently placed in the new "Safety-Eye", which is shrouded to eliminate reflections. Switches are the easy-action rotary type.



Thrilling New Performance

There's a new performance thrill in store for you! It's Prestomatic Fluid Drive* Transmission! This is the great engineering development that transmits engine power through liquid to give you the smoothest driving performance on the road. Acceleration is fast, velvet-smooth, and amazingly even. And Prestomatic shifts gears for you—instantly, quietly, and *when you want it to!* You can drive all day without shifting!

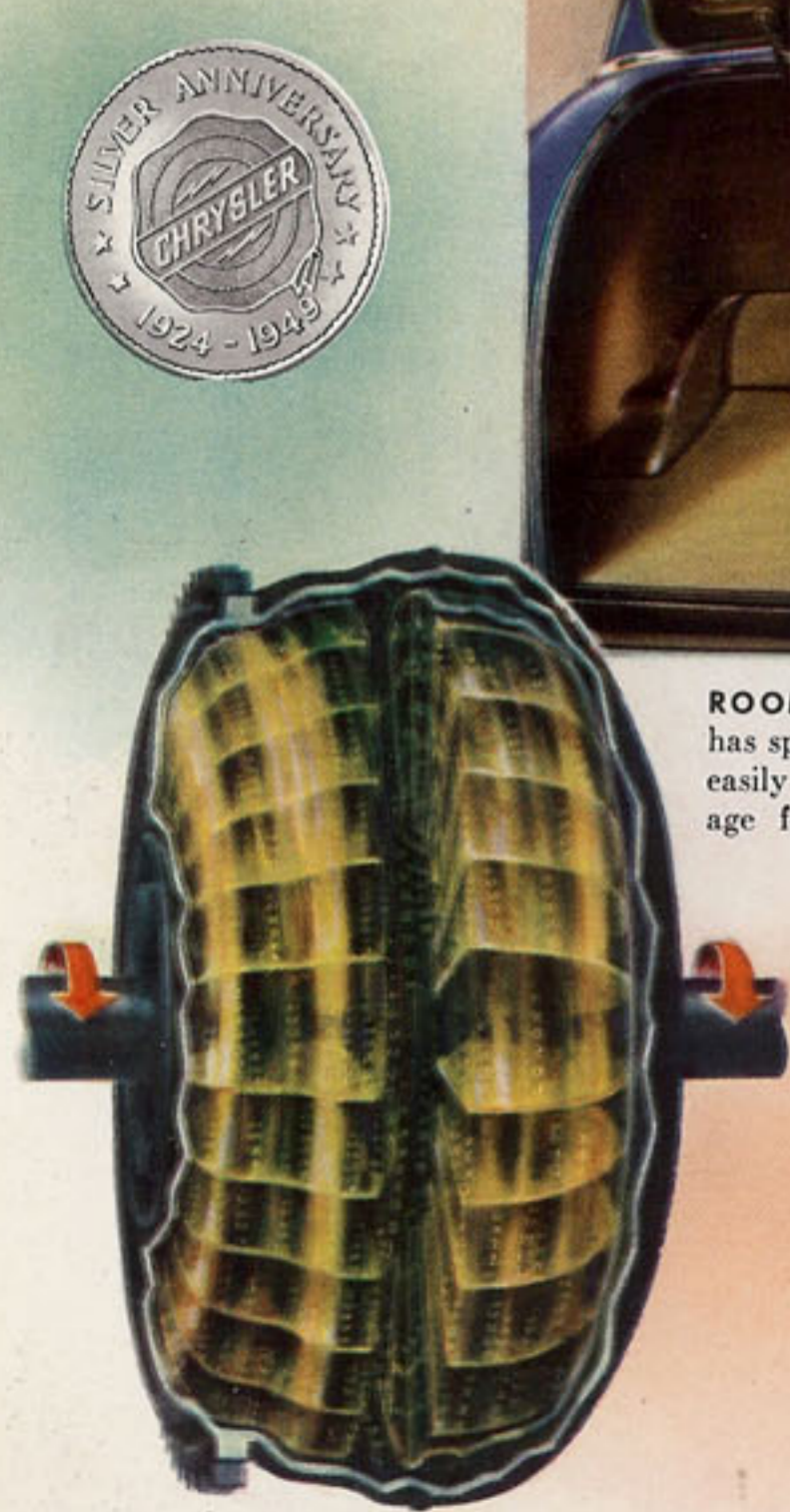
You will thrill, also, to the powerful performance of the famous Chrysler Spitfire High Compression Engine. It's precision-built and engineered to give dependable, economical operation for all driving conditions. New wide-gap resistor spark-plugs give longer service, smoother engine idling, improved engine performance at low speeds. And the new Chrysler waterproof ignition system assures quick engine starting and reliable engine operation in wet weather.

You will find exciting new driving pleasure, too, in the delightful handling ease and superb riding comfort of the Silver Anniversary Chrysler. There is a completely re-designed center-arm steering system for feather-touch steering. A four-inch longer wheelbase cradles both front and rear seats completely between the two wheels. New straddle-mounted Hydra-Lizer shock absorbers smooth-out the roughest road and give greater driving stability. And for your driving safety, there are Safety-Rim Wheels for blow-out protection—new, more powerful Bull's-Eye headlights—and reliable Safe-guard Brakes with longer-life Cyclebonded brake linings.

Why not find out for yourself just how wonderful this new Chrysler is? Drive one! You will be convinced that this is the finest riding and best performing car on the road!

* gýrol Fluid Drive

Easier to drive... Easier to steer... Smoother... Safer... More Comfortable

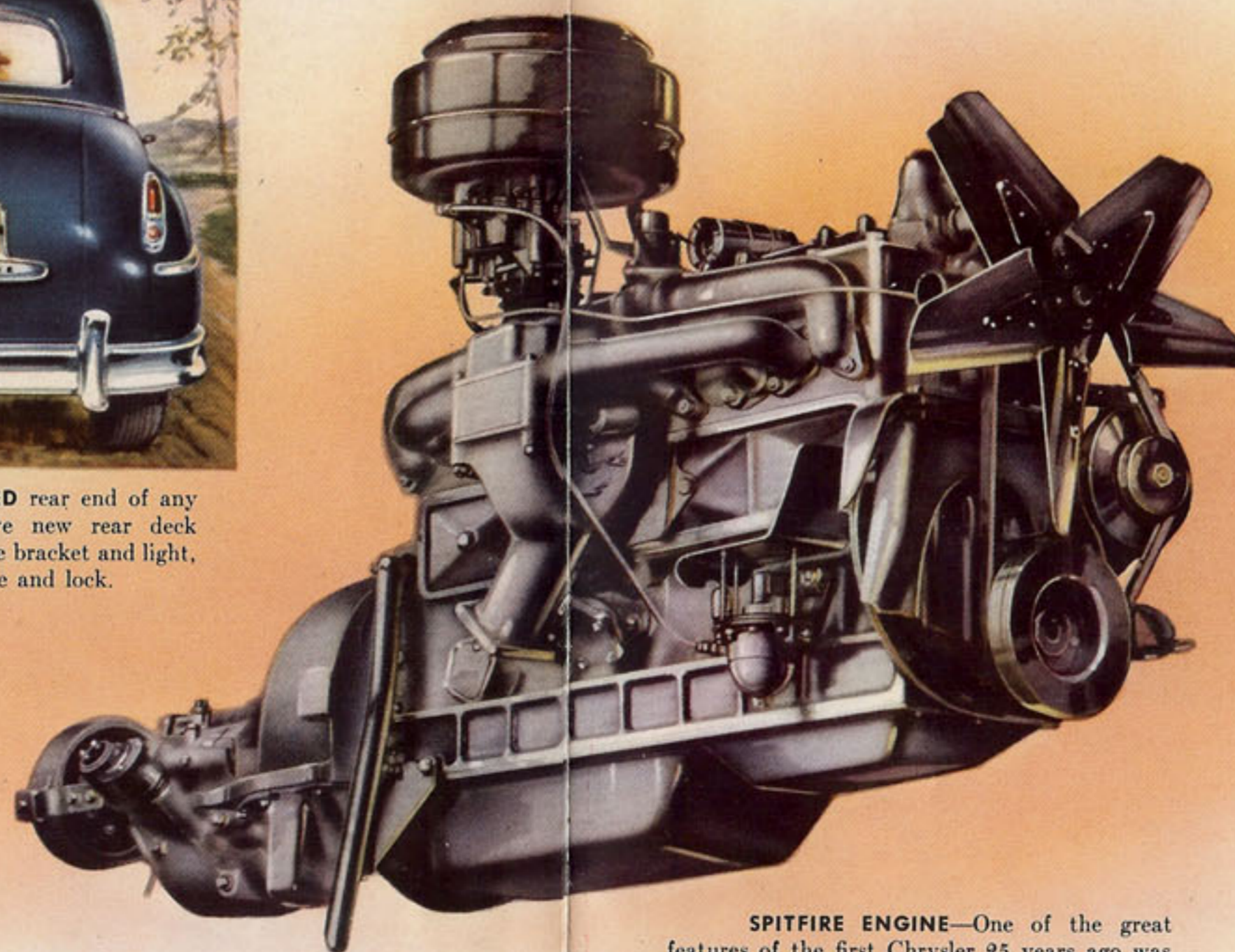


ROOMY LUGGAGE COMPARTMENT has spare tire at right, out of the way, yet easily accessible. Special lock-down stowage for bumper jack eliminates rattles.

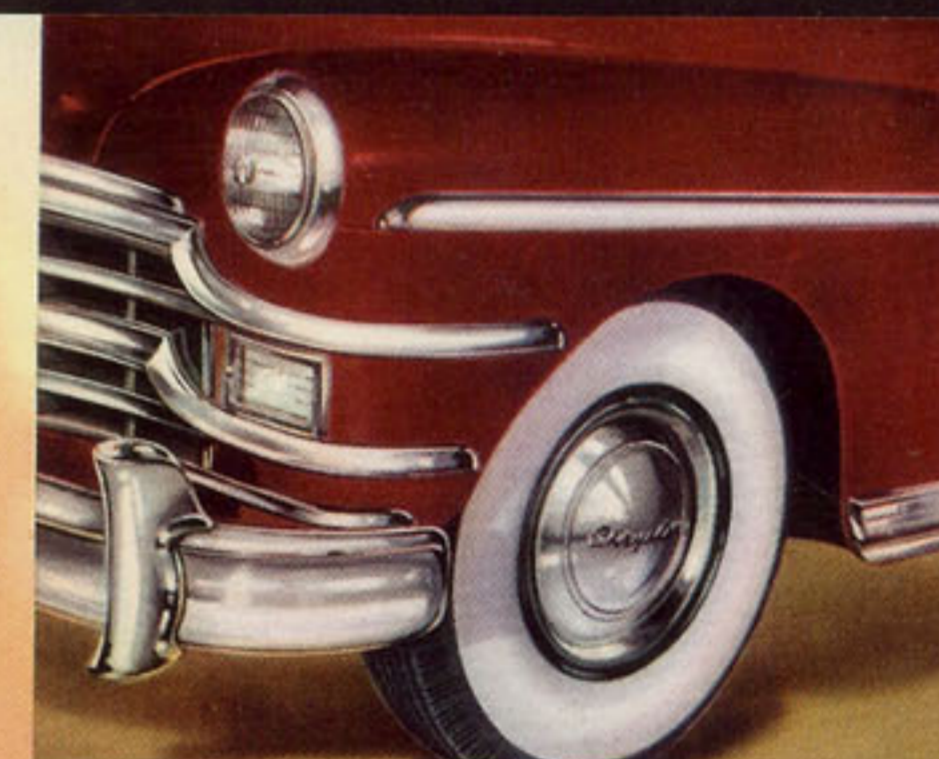
FLUID DRIVE—In 1938, eleven years ago, Chrysler introduced the Fluid Drive, the greatest advancement in driving ease and motoring pleasure since the introduction of the electric starter. Power from the engine is transmitted through oil to the transmission and rear wheels with no metal-to-metal contact. With Fluid Drive and the Prestomatic Transmission, driving a Chrysler is a thrilling experience that can only be appreciated with you behind the wheel—with you doing the driving. Why not try it? Drive a Silver Anniversary Chrysler and *learn* the difference!



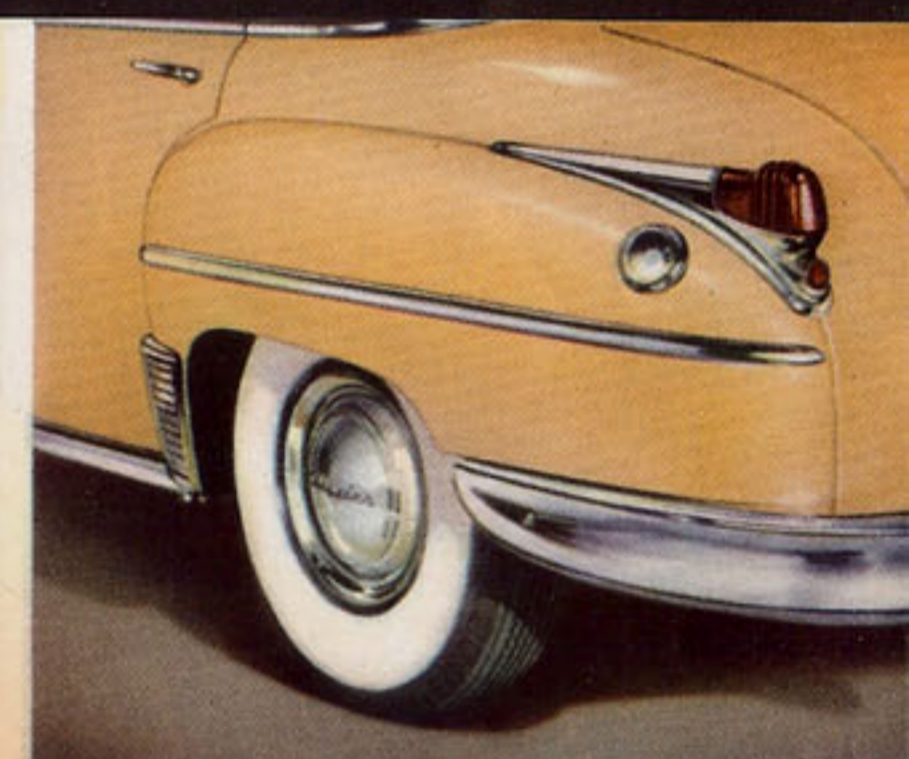
THE MOST BEAUTIFULLY DESIGNED rear end of any of the new cars! The distinctive new rear deck ensemble includes stop-lights, license bracket and light, back-up light, and rear deck handle and lock.



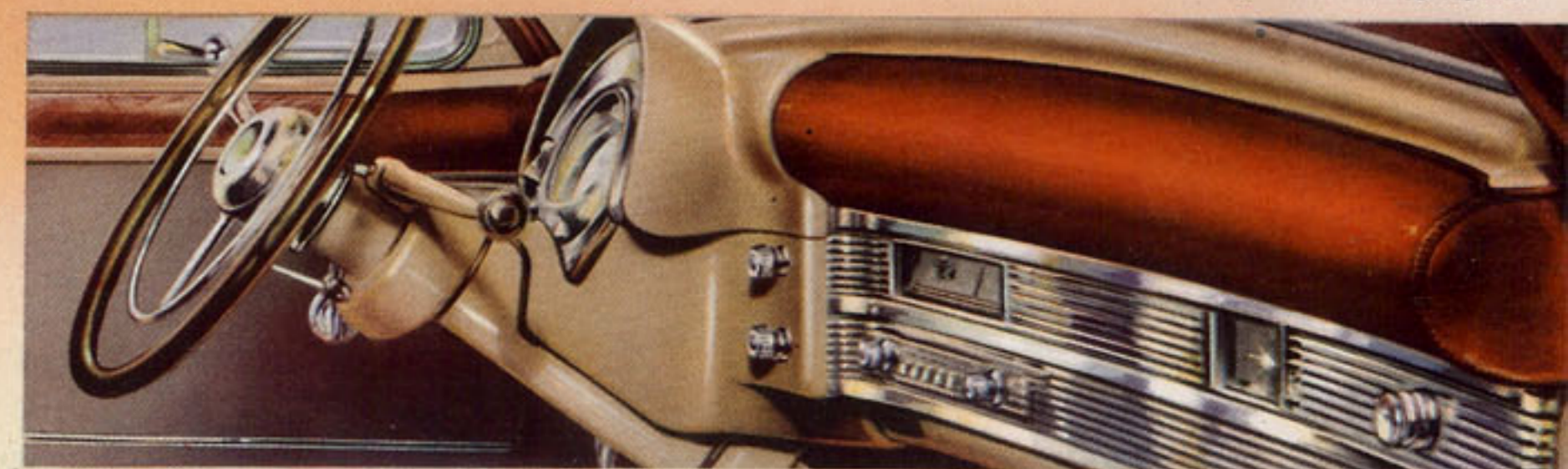
SPITFIRE ENGINE—One of the great features of the first Chrysler 25 years ago was the Chrysler High Compression Engine that revolutionized engine design and performance. In the new Silver Anniversary Models, the Chrysler Spitfire High Compression Engine is the standard by which other power plants will be measured.



WRAP-AROUND BUMPER in front extends around fender corner to give added protection against side dents. Massive bumper has new "channel" design. Three large, rugged bumper guards are provided as standard equipment.

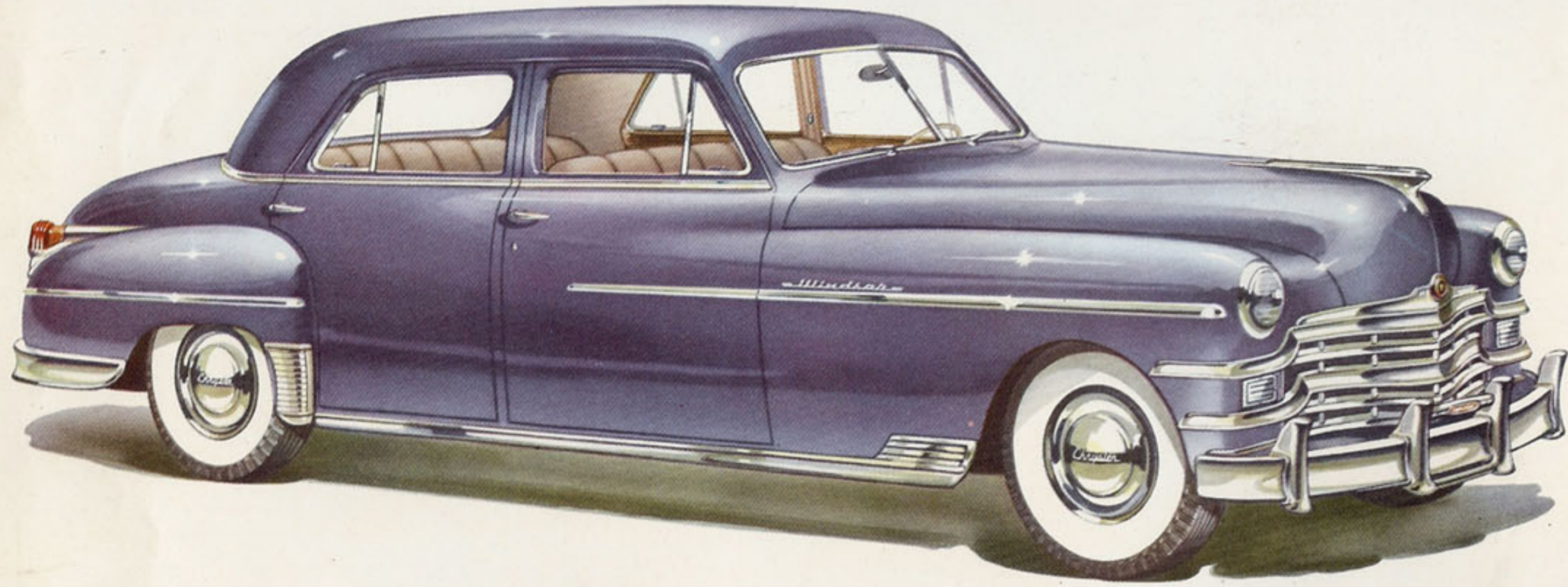


REAR FENDER has amply large opening at the wheel—an important convenience when a tire is changed. Also, fender is detachable from body, which saves time and money when making repairs.



SAFETY CUSHION—Here's a safety feature of major importance! Front passengers, especially children, are given new protection against possible injury in event of sudden stops or collisions by the new sponge-rubber Safety-Cushion. It extends across the top part of the dash, and is upholstered in leather to match the interior.

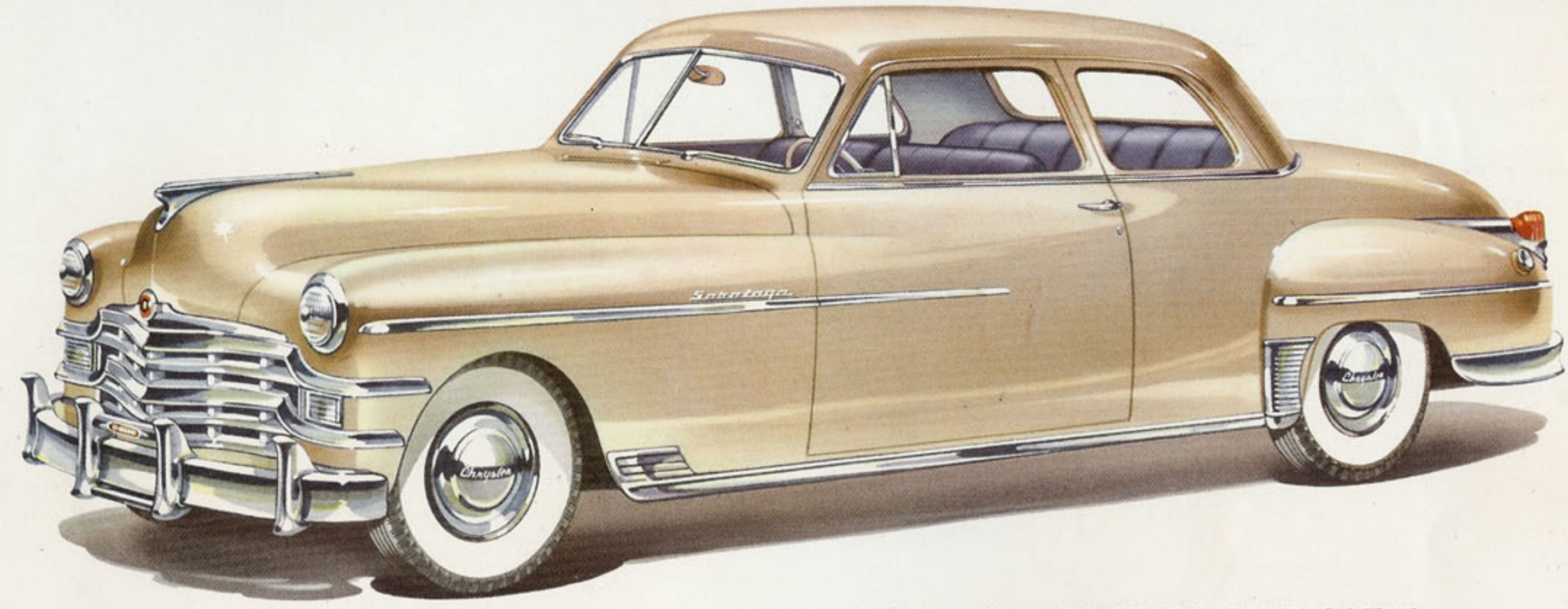
Easier to drive... Easier to steer... Smoother... Safer... More Comfortable



The WINDSOR FOUR-DOOR SEDAN

This Body Style also available on the Royal, Saratoga and New Yorker Models.

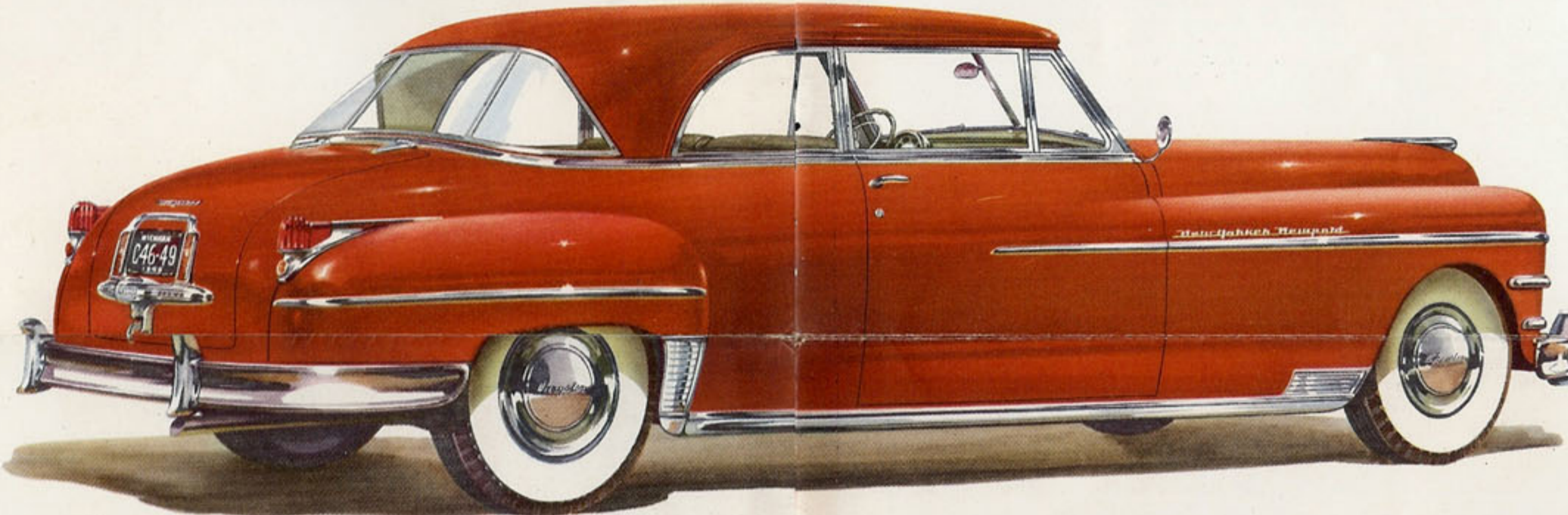
Distinctive new beauty . . . and all the features you've always wanted! It's easy to handle—smooth—safe—and comfortable. There's Prestomatic Fluid Drive Transmission, too, that shifts gears for you instantly and quietly. And it does this automatically when *you* want it to!



The SARATOGA CLUB COUPE

This Body Style also available on the Royal, Windsor and New Yorker Models.

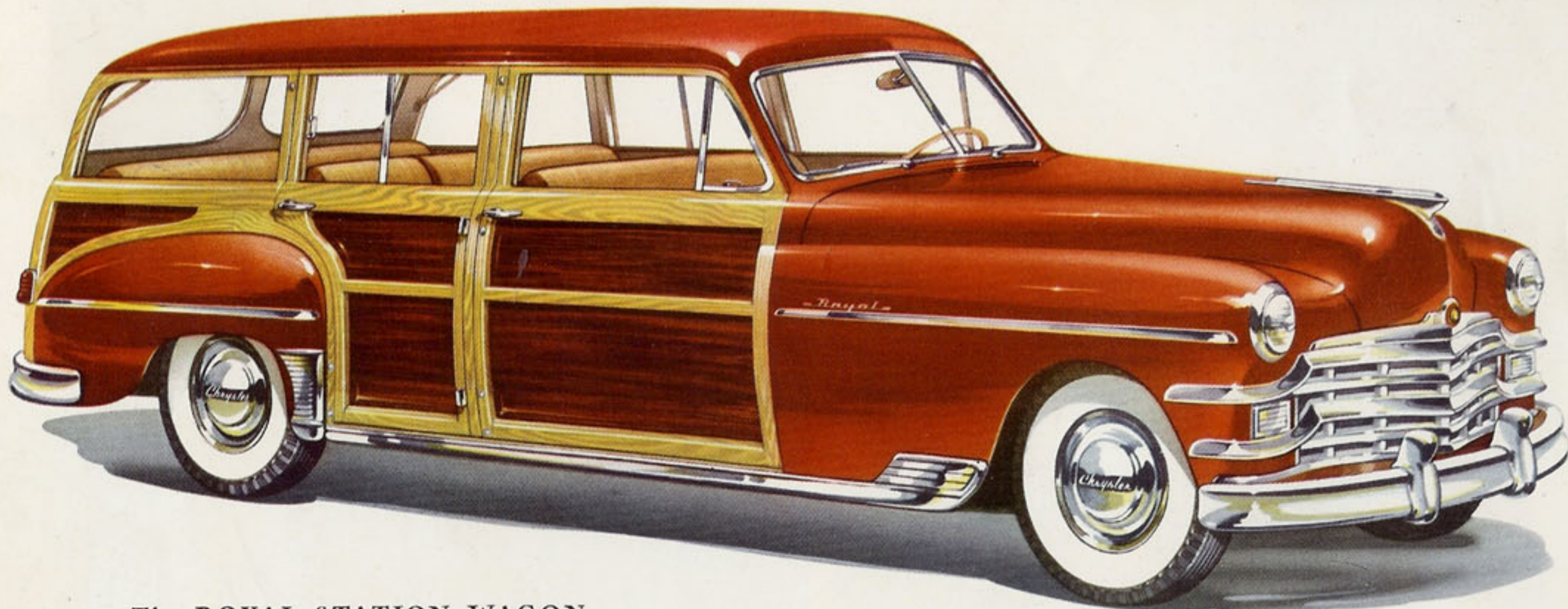
Here is stylish, new driving comfort for those who want to combine the compactness of a coupe with the six-passenger roominess of a sedan. And there is thrilling driving performance, too, with a powerful Spitfire High Compression Engine and the satin-smooth Prestomatic Fluid Drive Transmission.



The NEW YORKER NEWPORT

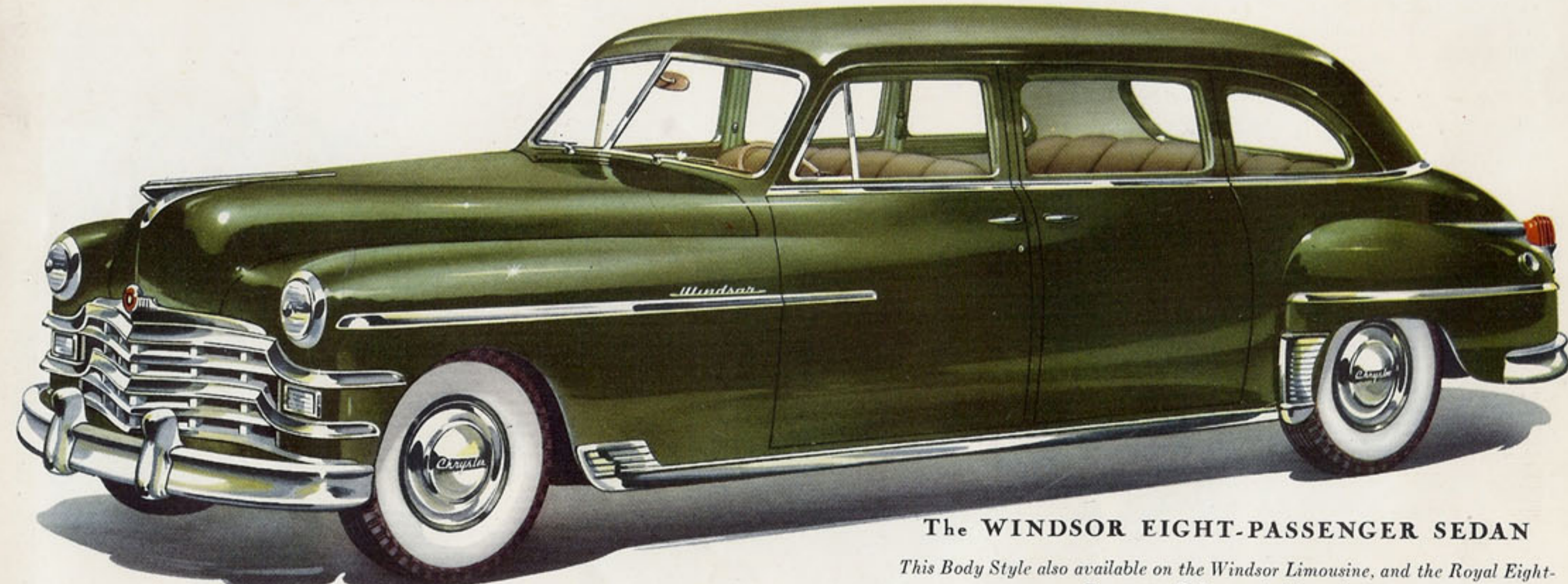
This Body Style available on the Windsor, and Town and Country Models.

This glorious body style, which was first introduced on the Chrysler Town and Country two years ago, combines the road-hugging beauty and smartness of the convertible with the steel-top safety and sturdiness of the club coupe. Result is an ultra-smart Chrysler that is style-suited for either summer or winter.



The ROYAL STATION WAGON

Stylish and serviceable, this smart new Chrysler Station Wagon will lend distinction to any occasion. Yet the rugged, sturdy construction is designed and built to take long, rough usage. The long wheelbase accommodates three full-size cushion seats—*nine-passenger capacity*. Two rear seats are removable.



The WINDSOR EIGHT-PASSENGER SEDAN

This Body Style also available on the Windsor Limousine, and the Royal Eight-Passenger Sedan and Limousine.

Travel in dignity and elegant comfort in this beautiful eight-passenger sedan. Luxurious interior offers richly-colored fabrics, tasteful appointments, every convenience possible for passenger comfort. The extra-long wheelbase accommodates two cushioned auxiliary seats which fold up when not in use.



Specifications

BODY STYLES—*Royal*: Four-door Sedan, Club Coupe, Eight-passenger Sedan, Limousine, Station Wagon. *Windsor*: Four-door Sedan, Club Coupe, Convertible Coupe, Newport, Eight-passenger Sedan, Limousine. *Saratoga*: Four-door Sedan, Club Coupe. *New Yorker*: Four-door Sedan, Club Coupe, Convertible Coupe, Newport. *Royal* and *Windsor* models are powered by six-cylinder Chrysler Spitfire Engine. *Saratoga* and *New Yorker* models have eight-cylinder Spitfire Engine.

ENGINE—*Spitfire High-Compression Six*: L-head, six cylinders; 3-7/16 in. bore and 4 1/2 in. stroke with displacement of 250.6 cu. in.; compression ratio, 7.0 to 1; brake horsepower, 116 at 3600 rpm; oil—5 qts. *Spitfire High-Compression Eight*: L-head, eight cylinders; 3 1/4 in. bore and 4 7/8 in. stroke with displacement of 323.5 cu. in.; compression ratio, 7.25 to 1; brake horsepower, 135 at 3200 rpm; oil—6 qts. Both engines have light-weight aluminum-alloy pistons; exhaust-valve seat inserts; crankcase ventilation; full-pressure lubrication; Floating Power engine mountings; Full-Flow Oil Filter mounted directly to engine; Lubrited cylinder walls.

FUEL SYSTEM—Down-draft carburetor with automatic choke and fast-idle control; heavy-duty oil-bath air cleaner and silencer; Oilite fuel filtering element in fuel tank. Gas tank capacity on *Royal* and *Windsor* is 17 gal., and on *Saratoga* and *New Yorker*, 20 gal.

COOLING SYSTEM—Thermostatic temperature control; four-bladed fan on Six and five-bladed fan on Eight; full-length water-jacket cooling; water pump permanently sealed and lubricated; cooling capacity on Six is 17 qts. and on the Eight, 21 qts.

TRANSMISSION—*Manual*: Synchronized, carburized, helically-cut gears; ratios: 2.57 to 1, 1.83 to 1, and 1 to 1, with 3.48 to 1 for reverse; lubricant capacity 2 3/4 pints. *Prestomatic*: Hydraulically operated with electrical kick-down switch, four forward speeds and reverse, with automatic shifting from first to second and from third to fourth gear; all forward-speed gears are synchronized; ratios: 3.57 to 1, 2.04 to 1, 1.75 to 1, and 1 to 1, with 3.99 to 1 for reverse. Lubricant capacity—3 pints. Prestomatic Fluid Drive Transmission is standard equipment on *Windsor*, *Saratoga* and *New Yorker*, optional equipment on *Royal*.

FRAME—Rigid, double-channel welded box type.

FRONT SUSPENSION—Independent front suspension with coil springs. Hydraulic double-acting shock absorbers.

REAR SUSPENSION—Semi-elliptic springs with grooved and tapered leaves; metal spring covers on *Royal* and *Windsor* rear springs; wax-impregnated liners in *Saratoga* and *New Yorker* leaves. Rear "Hydra-Lizer" double-acting shock absorbers are straddle-mounted from rear axle to frame cross member.

SWAY ELIMINATOR—Rubber-bushed sway eliminator in front, mounted on frame.

ELECTRICAL SYSTEM—High capacity generators with maximum charging rate of 40 amps for the Six and 45 amps for the Eight; automatic voltage and current control; 17-plate battery, 120-amp capacity on *Royal* and *Windsor*; 19-plate battery, 135-amp capacity on *Saratoga* and *New Yorker*; water-proof ignition; automatic-advance spark with speed and vacuum control; "Bull's-Eye" Sealed-Beam headlights; back-up light; turn indicators; plastic lens for all accessory lights; two tail-lights; two stop lights.

DRIVE—Hotchkiss type, through rear springs. Hypoid rear axle, semi-floating type, with tapered roller bearings. Rear axle ratios: *Royal*—3.9 to 1 with manual transmission, 3.73 to 1 with Prestomatic. Eight-passenger sedan has 4.1 to 1 manual and 3.91 to 1 with Prestomatic. *Windsor*, *Saratoga* and *New Yorker*—3.54 to 1 with Prestomatic.

BRAKES—Chrysler Safe-Guard hydraulic, internal expanding, with Bonded Brake Linings for longer life. Mechanical hand-brake operates on propeller shaft at rear of transmission. "Vacu-Ease" power unit for brakes is extra-cost equipment on the *Saratoga*, *New Yorker*, 8-passenger Sedan and Limousine.

WHEELS AND TIRES—Chrysler Safety-Rim Wheels, with 4-ply Super-cushion tires, 7.60 x 15 on *Royal* and *Windsor* and 8.20 x 15 on Station Wagon, 8-passenger Sedan, Limousine, *Saratoga* and *New Yorker*. White sidewall tires and wheel covers optional at extra cost.

WHEELBASE—*Royal* and *Windsor* (except 8-passenger Sedan and Limousine): 125 1/2 in. Eight-passenger Sedan and Limousine: 139 1/2 in. *New Yorker* and *Saratoga*: 131 1/2 in.

OVERALL LENGTH—*Royal* and *Windsor* (Sedan, Club Coupe and Convertible—with front center bumper guard): 206 1/2 in. *Royal* and *Windsor* 8-passenger Sedan and Limousine: 222 3/4 in. *New Yorker* and *Saratoga* (with front center bumper guard): 212 1/2 in.

OVERALL WIDTH—*Royal* and *Windsor*: 73 1/2 in. *Saratoga* and *New Yorker*: 74 3/4 in.

All specifications subject to change without notice.

CHRYSLER SALES DIVISION • DETROIT