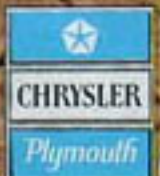


1971 Chrysler

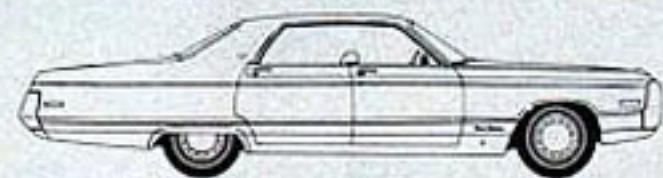


Coming
Through.

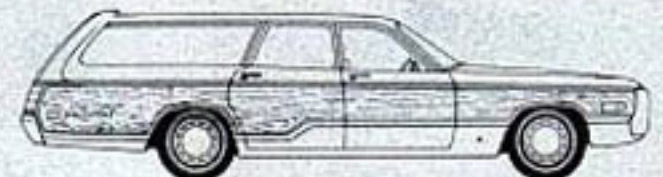
1971 Chrysler coming through for all the living you do.



Chrysler Imperial Pages 4-11



Chrysler New Yorker Pages 12-17



Chrysler Town & Country Pages 18-21



Chrysler 300 Pages 22-25



Chrysler Newport Custom Pages 26-31



Chrysler Newport Pages 32-37

A car with the size, room, comfort, handling ability and power to make it easy for you to enjoy all of the living you do.

That's the 1971 Chrysler coming through for you.

Total comfort is what it's all about.

You and your passengers will never feel cramped in a Chrysler. We've been making the biggest automobile interior in America. The seats are over five feet wide. Foam padded and contoured to assure complete relaxation.

And they're luxurious, too. With new integral head restraint seats. Body-cradling bucket seats. Bench seats with fold-down center armrests. The flexibility and luxury of a 3-in-1 divided bench seat with individual adjustments and passenger side recliner. Supple leather. Rich fabrics. Handsome vinyls. A variety of colors, weaves and textures.

Chrysler coming through for you. With all of these materials and designs fashioned for your comfort. Comfort also means the elimination of noise.

Coming through with new features and options.

Front-end treatment • Handsome new exterior trim • Wheel covers • 15 new colors • Ventless side glass • Newly designed steering wheel and instrument panel • New interiors • High-level ventilation system • New options like our Stereo Cassette Tape System with the ability to record off the radio plus a microphone for dictation • Sun roof • We're coming through with more.

Coming through with Torsion-Quiet Ride.

Over 160 square feet of sound insulation material shelter you from nearby hubbub.

The same philosophy that a Chrysler should be seen and not heard applies to our unibody construction. One completely welded body means there are no bolts to work free and rattle. In addition, eight rubber body-mount sound isolators separate the frame from the structure of the car. Gives you a quiet, relaxing ride. Without a peep or squeak.

The quiet-riding Chrysler is a great road car.

Torsion bars are used instead of coil springs in front and actually twist and flex to rid the car of road shock, squeeze the mushiness out of the ride and take corners and curves — unlike most cars Chrysler's size — without undue lean or sway.

Additionally, our wide stance gives you greater stability and highway confidence.

For a controlled ride. A quiet ride. A comfortable ride. Chrysler comes through for you. See Torsion-Quiet Ride diagram on page 40.

You can own a big V-8 and still buy regular gas.

A 440 cubic inch V-8 is the largest passenger-car engine ever produced by us. Now you can have all this power — without having to pay premium gas prices for it. The same advantage applies to our 383 V-8.

Either way, you have enough power to pass, tow, or handle freeway driving—plus saving money, too. Chrysler coming through for you.

If you want it, you can afford it.

There's a great deal of misconception about Chrysler's initial price. Our model lineup consists of 15 cars. Each and every one of them is a Chrysler. One is priced only a few dollars a month more than the most popular smaller cars, comparably equipped.

Your operating costs don't reflect luxury car ownership either. For one thing, as we've said, you can burn regular gas. Secondly, durable bias-belted tires are standard equipment. They'll probably be there as long as you own the car. You'll also save money with a chassis that only needs lubrication after you've driven 36,000 miles.

And our engineers have endowed these cars with all of the design excellence and value Chrysler products are renowned for. The kind of value that'll be returned to you at trade-in time. Worth more now . . . worth more later.

If it's a Chrysler, indulging your taste for a fine luxury car won't be an extravagance.

That's Chrysler coming through for you.

Coming through with important new options.

This year, we offer more options than ever before. Including several unique ones:

With Imperial's new four-wheel anti-skid braking system, an on-board computer takes over the moment you touch the brake pedal. The car brakes and unbrakes as conditions demand. You stop shorter. You can steer out of trouble. You're in complete control. You can handle a skid before it becomes dangerous.

If you want it, you'll have to come to us. No other manufacturer offers it.

There's also an AM/FM stereo radio with cassette tape player and microphone. Now you can listen to and record your favorite music while you drive. Or you can dictate and record very important thoughts.

If you'd like to let more of the sunshine in, you can order a power-operated sliding sun roof on two-door hardtop models.

And there's a headlamp washer system that not only rinses your Imperial's lights, but also scrubs them clean with special nylon brushes.

Chrysler — for all the living you do.

The size. The comfort. The style. The value. The power. You name it. Chrysler comes through for you.

Newport & Newport Custom Standard Features. V-8 engine 383 2-barrel • Torsion-Quiet Ride • Single exhaust system • 37-Amp alternator • 59 Amp/Hr. battery • Speedometer-Odometer-Tripometer-Fuel Gauge • Alternator Gauge, Oil pressure indicator light, Coolant temperature lights, High-beam indicator light • Heater/defroster (4 blower speeds) • Glove box lock • Color-keyed formed carpet • Two rear seat ashtrays • Push-button seat-back release (2-door hardtops) • Padded instrument panel • Larger (12") inside day-night mirror • Ventless door glass • Loop-type bumpers/integrated styling • Wheel covers (Set of 4) • Dual horns • Safety-Rim wheels • Back-up lights • Left ashtray light • Dome center light • Belt molding on 4-door sedan* • Front center armrest* • Air foam seat cushions — front and rear* • Seat side shields* • Vinyl side protection molding* • H78 x 15 tires*Std. on Newport Custom only

300 Standard Features. (All the above plus the following) V-8 engine 440 4-barrel • Full width grille theme with concealed headlamps** • Automatic transmission with part throttle kickdown • Full width taillights • Color-keyed vinyl side protection molding** • 70 Amp battery **300 only

New Yorker Standard Features. (All the above plus the following) Power steering • Power disc brakes • Time-delay ignition switch light • Trunk light • Electric clock • Fender-mounted turn signals • Rear cigar lighters (4-door models) • Hood insulator pad • Fully carpeted trunk • Deluxe seat belts • Undercoating • J78 x 15 tires • Quarter panel wheel opening skirts • Glove box light • Right and left ashtray lights • Map light • Remote left outside mirror • 3-speed windshield wipers with coordinated washer button

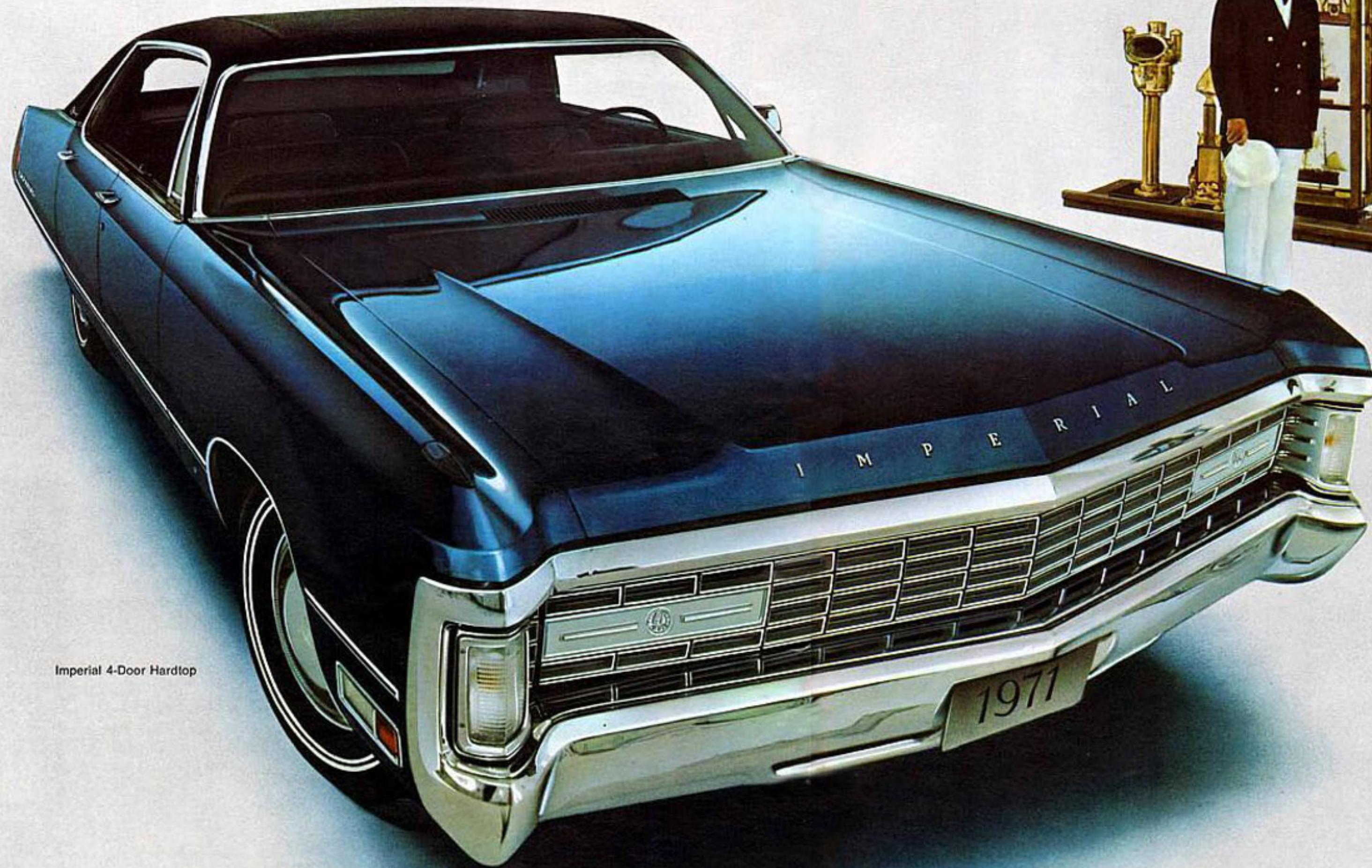
Imperial Standard Features. 440 cubic inch V-8 engine • 3-speed TorqueFlite automatic transmission with part-throttle kickdown • Power steering • Power brakes, self-adjusting front disc and rear drum • Power windows • Vinyl roof (Choice of 6 colors) • Formal rear window • Lavaliere straps—rear-roof pillar (4-door model) • Vinyl-covered rear pillar pillows (4-door model) • Reading lights (rear) • Instrument panel with gauges for alternator, engine temperature, oil pressure, fuel, tripometer, and an electric clock • "Reminder" lights for: "Fasten seat belts," "Lock doors," "Brakes," and "High Beam" • Deluxe lap and shoulder belts w/ push-button release buckles • Sentry signal for checking gauges • Courtesy lights, Map light, Glove

box light, Ignition switch light/Time-delay • Dual concealed headlamps, rear back-up lights, front parking lights, fender-mounted turn indicators, front side marker lamps and cornering lamps and reflectors • 100% cut-pile nylon carpeting • Vinyl headlining • Wood-textured appliques on doors, clock, glove box • Storage compartments, all doors • Rim-Blow steering wheel • Four cigar lighters • Coordinated and concealed 3-speed wipers, electrically operated washers • Fresh air heater/defroster • Inside hood release • Undercoating and hood silencer pad • 12 volt 70 Amp/hr. battery • Day/night 12" inside rearview mirror • Remote control exterior left sideview mirror

Standard Safety Features. Large rear reflectors and lights • Fuel-tank impact protection • Lane-change turn signal • Locking steering column • Superior seat belt anchorage • Energy-absorbing steering column and wheel • Energy-absorbing instrument panel • High-strength windshield • Energy-absorbing front seat-back and armrests • Seat belts, all seating positions • Shoulder belts, 2 front • Manual door lock-levers with non-override lock feature, except driver's door • Interlocking door latches • Flush-type inside door release levers • Cushioned sun visors • Dual braking system with warning light • Side marker lights • Hazard warning light system • Windshield wipers, electric • Vinyl-clad day/night inside rearview mirror on double-ball-joint mount • Head restraints, 2 front • Locking latch on front seat-backs (2-doors only) • Left outside rearview mirror • Bias-belted tires

	Wheelbase	Track		Length	Width	Height	Effective Head Room		Seat Height		Leg Room		Shoulder Room		Knee Room
		Front	Rear				Front	Rear	Front	Rear	Front	Rear			
Imperial (4-Door Hardtop)	127	62.4	62.0	229.7	79.1	56.1	37.7	37.2	9.2	11.5	41.8	41.5	62.7	62.7	7.3
300 (4-Door Hardtop)	124	62.1	62.0	224.7	79.1	55.3	37.7	37.2	9.2	11.5	41.8	41.5	63.2	63.3	6.8
Town & Country (2-Seat & 3-Seat)	122	62.1	63.4	224.8	79.1	58.1	40.1	40.7	9.2	11.9	41.8	39.1	63.2	62.7	5.2
Newport & Newport Custom (4-Door Sedans)	124	62.1	62.0	224.7	79.1	55.2	38.7	37.9	9.2	11.5	41.8	41.5	63.2	63.3	7.5
New Yorker (4-Door Sedan)	124	62.1	62.0	224.7	79.1	55.4	38.7	37.9	9.2	11.5	41.8	41.5	63.2	63.3	6.8

Chrysler Imperial 4-Door Hardtop



Imperial 4-Door Hardtop

Coming through in a most elegant way. That's what the Chrysler Imperial is all about. Concealed headlamps accent Imperial's handsome grille. The tasteful body side molding has a protective vinyl insert—color keyed to the standard deep-grained vinyl roof in your choice of five colors. New rear wheel skirts and a sculptured side treatment enhance Imperial's stately lines. The end result is a new definition on luxury car design.



Imperial interiors

Imperial four-door model's standard seat of rich cloth and supple leather has often been imitated — but never equaled — for comfort and sumptuousness. A passenger side recliner that can adjust to an infinite number of positions — and turns each seat into a personal armchair—is standard. Power for the left or for both seats is optional.

A. Standard cloth-and-leather individual adjustable seats with passenger side recliner. In blue, green, black, gold, burgundy, gunmetal, saddle/tan.

B. Driver's console with illuminated power controls remains easy-to-use and distinguished looking.

C. Door courtesy lights conveniently come on when a door is opened.

D. A glove compartment that allows you to tuck in personal items is located in each of the doors.

E. Switch-operated rear reading lights that also come on when the door is opened are another distinctive Imperial hallmark.





Coming through with the largest power plant developed by the Chrysler Corporation, a 440 4-bbl. V-8 engine, is another Imperial distinction. Performing in concert with our smooth TorqueFlite automatic transmission and our exclusive Torsion-Quiet Ride, Imperial will give you matchless road performance. In addition, a 127 inch wheelbase gives the Imperial a truly regal ride.

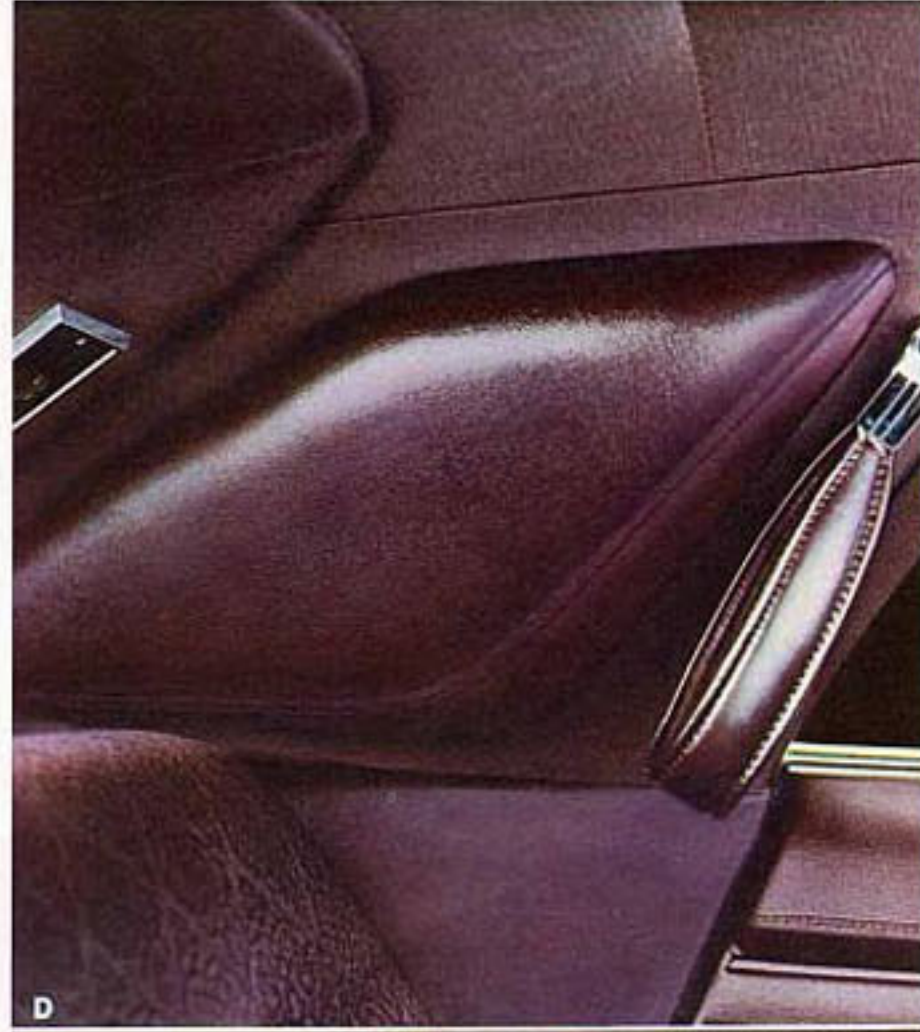
Imperial 2-Door Hardtop



Imperial interiors

The warm glow of rich leather seating — the finest available — is yours as an option on two-door hardtop models only. Yards of rich, deep-pile carpeting are everywhere you look . . . including the massive trunk. And new for '71 is our instrument panel with burl walnut accents plus a combination headlamp switch and coordinated windshield washer/wipers. As you can see, every commitment to luxury and prestige comes through in the 1971 Chrysler Imperial.

- A. Optional leather bucket seats in seven colors. Black, green, light blue, saddle, gold, russet, white. (2-door models only.)
- B. Standard cloth-and-leather bench seat with fold-down center armrest. Choice of seven colors. Blue, green, black, gold, burgundy, gunmetal, saddle/tan.
- C. Optional four-door model leather seats in nine colors. Russet, blue, green, black, saddle, burgundy, gunmetal, gold, white.
- D. Built-in foam pillows and lavaliers straps add to four-door back-seat luxury.
- E. Door-assist handles are another convenient standard Imperial feature.
- F. New burl walnut, floodlit instrument panel.





The New Yorker lives up to its look of quiet authority. It comes through whether tackling tough city traffic or breezing along on expressways. A 440 cu. in. V-8 and front torsion-bar suspension see to that. And you've never had it so quiet. Rubber body mounts, suspension system isolators, and nearly 250 square feet of sound insulation material shut out outside sounds so you don't even know they are there. Which is the way it should be in a car with Torsion-Quiet Ride.

New Yorker 4-Door Hardtop



New Yorker 4-Door Sedan



New Yorker 2-Door Hardtop

Rounding out the New Yorker lineup are a four-door sedan and a two-door hardtop. And as in all New Yorker models, squared off headlamp frames, a bright die-cast grille, and a full loop bumper. Flowing lines and ventless side windows help give the car an illusion of motion — even when standing still. The rear deck features tucked-in taillamps that help protect against accidental breakage. Chrysler comes through with the New Yorker . . . a car for the luxury-minded.



A

New Yorker interiors

Rich and elegant best describes the standard New Yorker interior trim of cloth-and-vinyl. The Cairo fabric is composed of an intricate pattern of weaves that form a pleasing paisley design. Dull and shiny contrasts make the matelassé fabric excitingly elegant. Front and rear center armrests are standard on every four-door model. Optional seats include all-vinyl buckets, plus leather-and-vinyl and cloth-and-vinyl bench seats. All of the split bench seats have a standard passenger side recliner and individual adjustment.

A. Standard cloth-and-vinyl interior with center armrest (4-door models). In blue, gold, green, gunmetal, black.

B. Standard cloth-and-vinyl interior with center armrest and integral head restraints (2-door models). In blue, gold, green, gunmetal, black.

C. Optional all-vinyl bucket seats with center padded cushion and pull-down armrest (2-door models). In green, saddle, black, white.

D. Optional cloth-and-vinyl 3-in-1 bench seat (4-door models). In gunmetal, blue, green, black. Also available in all-vinyl. In green, beige, black.

E. Optional leather-and-vinyl 3-in-1 bench seat—saddle color. (4-door models.)

F. New Yorker floodlit instrument panel is all-new for '71. Extra distinction comes through from simulated wood-grain inserts and the unique Griffin medallion.



B



C



D



E



F

17

16

Chrysler Town & Country Wagon



The most luxurious wagon in the industry . . . with a full load of station wagon convenience. Consider the standard features: power steering, power disc brakes, TorqueFlite automatic transmission, front torsion-bar suspension and special anti-sway bars for sure-footed handling and control. Enough cargo space to carry 4' x 8' sheets of plywood flat on the floor. Enough power to tow 2,500 pounds without a special trailer-towing package. Simulated Brazilian Rosewood enhances the sides and tailgate. The Town & Country is equipped with a 383 cubic inch V-8 and now comes through with Torsion-Quiet Ride. It's perfect for Town & Country . . . for work or leisure.

Town & Country Station Wagon



Town & Country interiors

The wagon that has it all on the outside comes through on the inside, too. The pleated all-vinyl seats not only look good but are comfortable and easy to keep clean. Colors: blue, green, black, saddle. There's plush nylon carpeting throughout and a lockable hidden storage compartment under the floor. Choose from two- and three-seat models . . . with 113.5 cubic feet of storage space in the two-seat version. If you're a wagon lover . . . here's the wagon to love.

A. Another interior choice for the Town & Country is the optional all-vinyl bench seat. It features individual adjustments and center armrests plus a passenger side recliner. In black, green, saddle, gold. Also available in cloth-and-vinyl. In beige only.

B. The integrated airfoil . . . another Chrysler exclusive. Helps keep fumes out of the car when you open the rear window . . . and the rear window clean when closed.

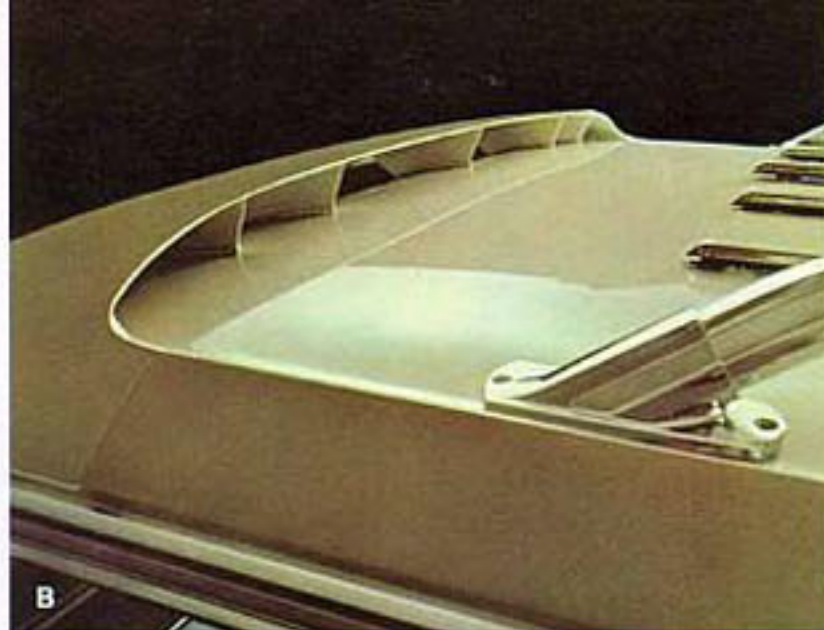
C. Dual Air Conditioning System* — A Chrysler exclusive. Rear compartment passengers take note. You can set the temperature you desire. Very refreshing.

D. Cornering Lights* — help you light up the way when you make a turn at night.

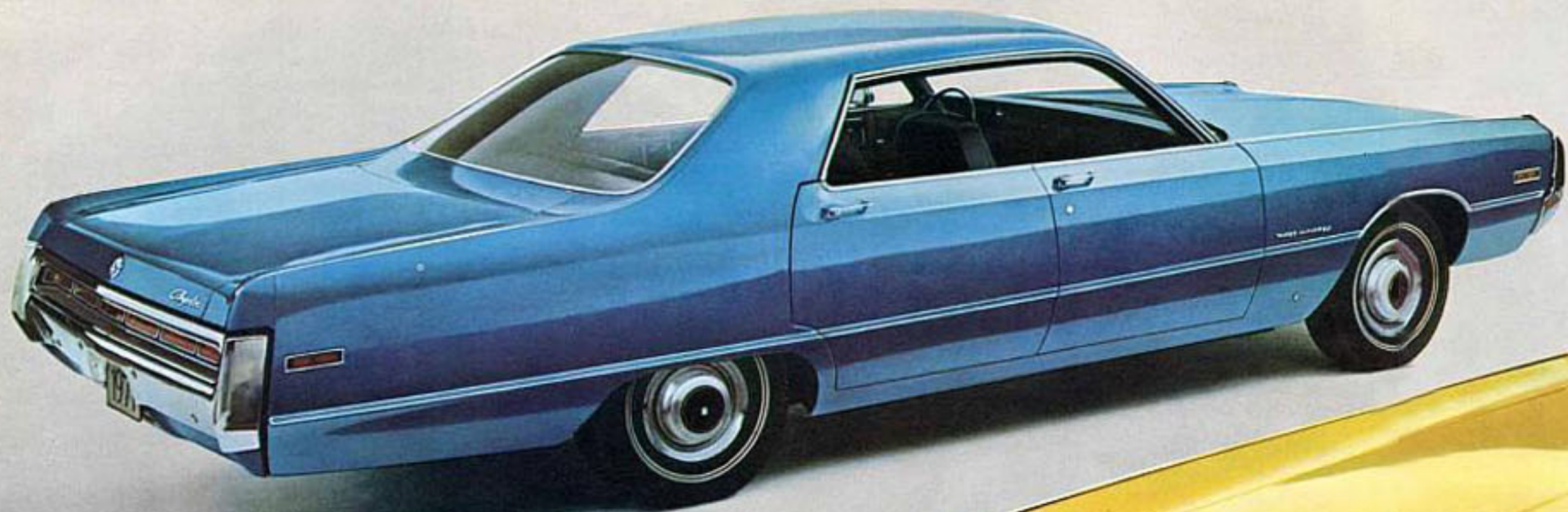
E. A most practical option is our rear window wiper/washer that's concealed in the tailgate.

F. Double action tailgate. Need a door? You've got it. Need a tailgate? You've got that, too. Standard along with the power tailgate window.

*Optional



Chrysler Three Hundred



300 4-Door Hardtop

Proud. Distinctive. Powerful. A rare blending of elegance and extraordinary road performance in either two- or four-door hardtop models. A broad sports-car stance, concealed headlamps, color-coordinated vinyl side rub strips, unique wheel covers, and full-width segmented taillamps are some of the distinguishing features of a Three Hundred. Performance comes through from a 440 cubic inch V-8 that's been linked to our smooth TorqueFlite automatic transmission. Here's the latest expression of Chrysler engineering excellence.



300 2-Door Hardtop



A

Three Hundred interiors

A personal luxury/sports car should have a personal interior. The Three Hundred comes through in fine style. Standard all-vinyl bucket seats set a sporty tone immediately. Or you can choose the optional contoured bench seats in either cloth-and-vinyl or all-vinyl. A sporty/luxury option to consider is the floor-mounted console. It contains the automatic transmission quadrant, ashtray, courtesy lights, cigar lighter and a lockable storage compartment. If you think an interior can't be exciting, then you haven't been inside a Three Hundred.

A. Standard all-vinyl bucket seats with optional console. In beige, green, saddle, black, white.

B. Optional cloth-and-vinyl bench seats. In green, gold, beige. Also available in all-vinyl. In russet, blue, black.



B



Newport Custom 2-Door Hardtop

Choose from three Newport Custom models. And every one of them coming through with big-car room and luxury. Styling highlights include a new grille with a bold theme running full width and protective body side vinyl moldings. A 383 V-8 engine, Torsion-Quiet Ride, and bias-belted tires are standard. Then personalize to your heart's content. Stereo cassette or 8-track tape player, AM/FM radio, power windows, seats and steering. Power disc brakes. Auto-Temp II air conditioning. Vinyl roof. Our options list goes on. And on. And on. Over 50 items in all.

Chrysler Newport Custom



Newport Custom 4-Door Hardtop



Newport Custom 4-Door Sedan

Last year, this is what *Motor Trend* had to say about the Newport Custom, "Most luxurious, when it comes to ride, is the Newport Custom. Its understated comfort is there, especially on the freeway. You just sit back and steer. No wind or road noise, even at turnpike speeds. Everything, and I mean everything about the Newport Custom is about as excellent as any domestic car, in any price range or category, could be." That was last year's verdict. This year, we're coming through even stronger.



A

Newport Custom interiors

There's nothing basic about the basic Newport Custom standard cloth-and-vinyl interior. Notice the smooth, deep-cushioned look—with the nylon facing adding lustrous highlights to the sculpted ribbed body cloth. Or choose the optional all-vinyl 3-in-1 bench seat with passenger side recliner. All models feature wall-to-wall carpeting in colors to compliment the interior.

A. Standard cloth-and-vinyl bench seat in beige, green, gold, black (blue, sedan only).

B. Optional all-vinyl 3-in-1 bench seat in green or black. Also available in cloth-and-vinyl. In blue, green, beige.

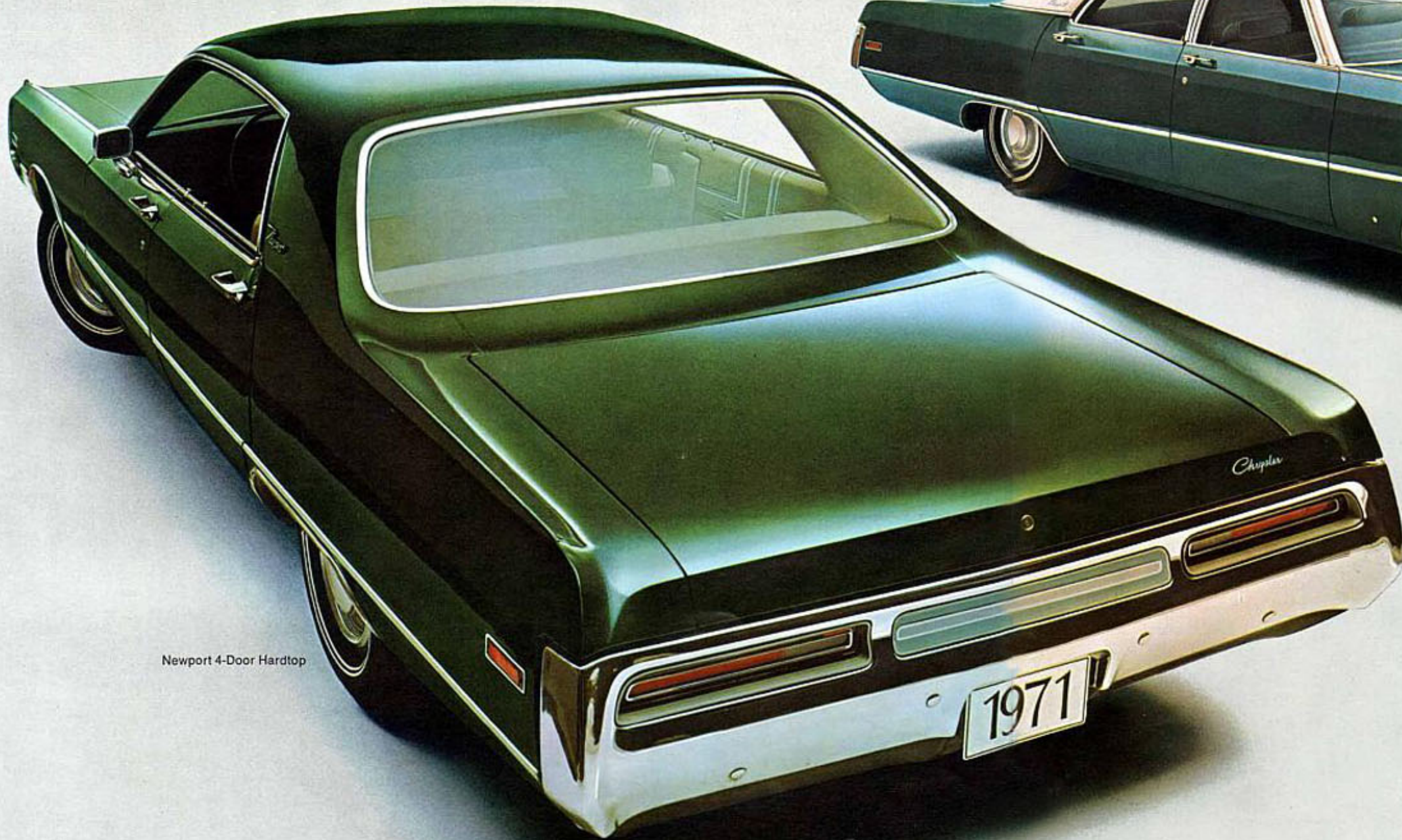


B



No matter what happens in the world of high finance, you'll find you're coming through in the automotive world if you buy a Chrysler Newport. It's our most affordable Chrysler. Yet it's still a Chrysler—all the way. A road-cradling 124 inch wheelbase. A wide stance for great stability. A 383 cubic inch V-8. Torsion-Quiet Ride. Bias-belted tires. Blue chip from any angle and in every respect.

Newport 2-Door Hardtop



Newport 4-Door Hardtop



Newport 4-Door Sedan

For those who want luxury without having to pay mind-boggling prices, Chrysler comes through with Newport. The luxury car that's priced only a few dollars a month more than the most popular smaller cars, comparably equipped. New styling highlights to look for are a stylish new grille, full loop bumpers, front and rear for extra protection, high-style wheel covers, and recessed taillamps that are protected against accidental breakage. The trunk holds more than any car in its class. A whopping 21.2 cu. ft. A whopper of a luxury car . . . without a luxury car price . . . Chrysler Newport.



A

Newport interiors

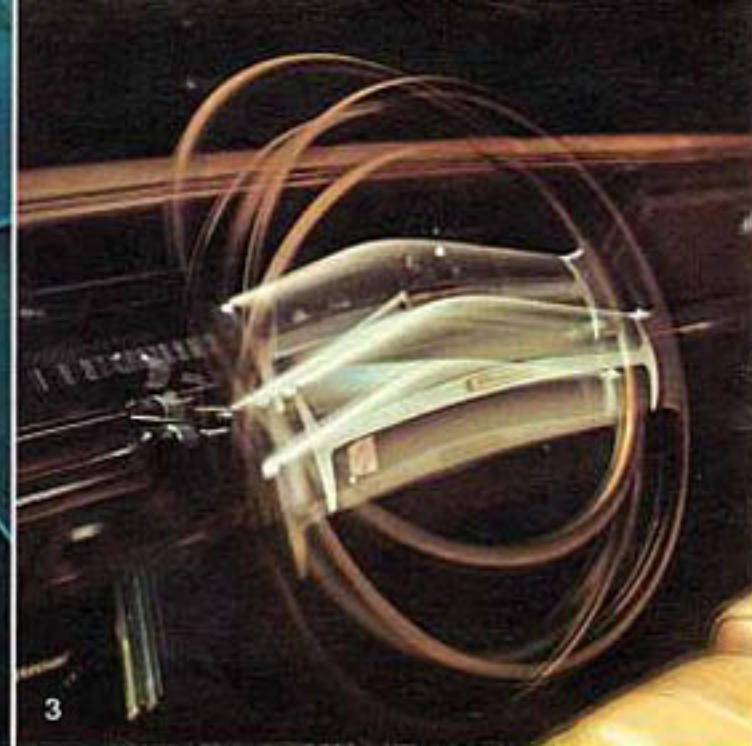
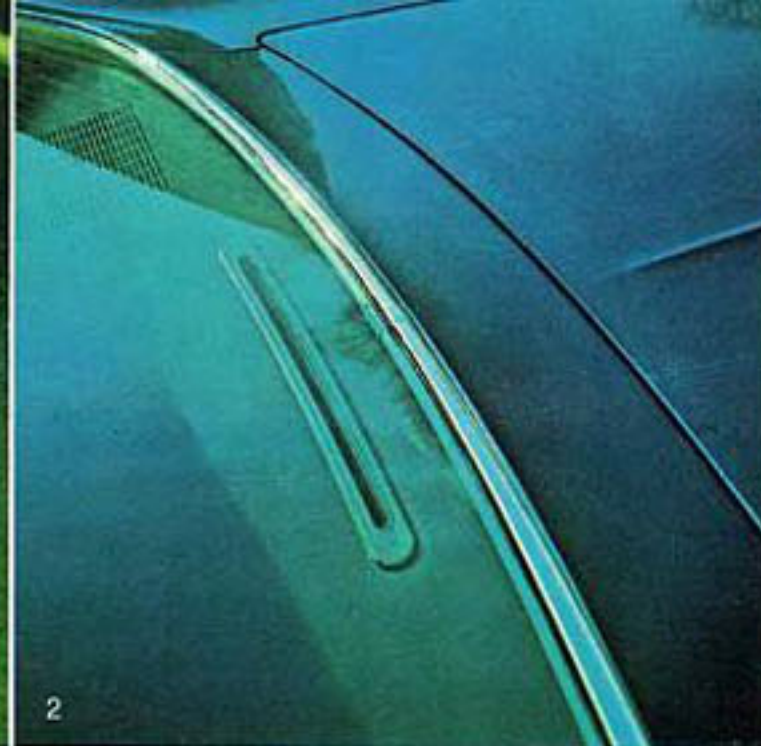
Enough room to stretch out those legs and relax. Now, with new, deeper padded seats, glamorous fabrics and vinyl door trim panels. The standard cloth-and-vinyl interior features Cadiz fabric. This smooth 100% nylon-faced fabric has a free-flowing design executed in an exciting jacquard loom. Optional interiors: all-vinyl buckets and all-vinyl bench seats. Here is the value you've come to expect from Chrysler coming through for you.

A. Standard cloth-and-vinyl bench seat in blue, green, gold, gunmetal, black (beige, sedan only).

B. (top) Optional all-vinyl bucket seats in saddle, black, white. (Two-door models only.) (bottom) Optional all-vinyl bench seats in green, russet, black (beige, hard-tops only).

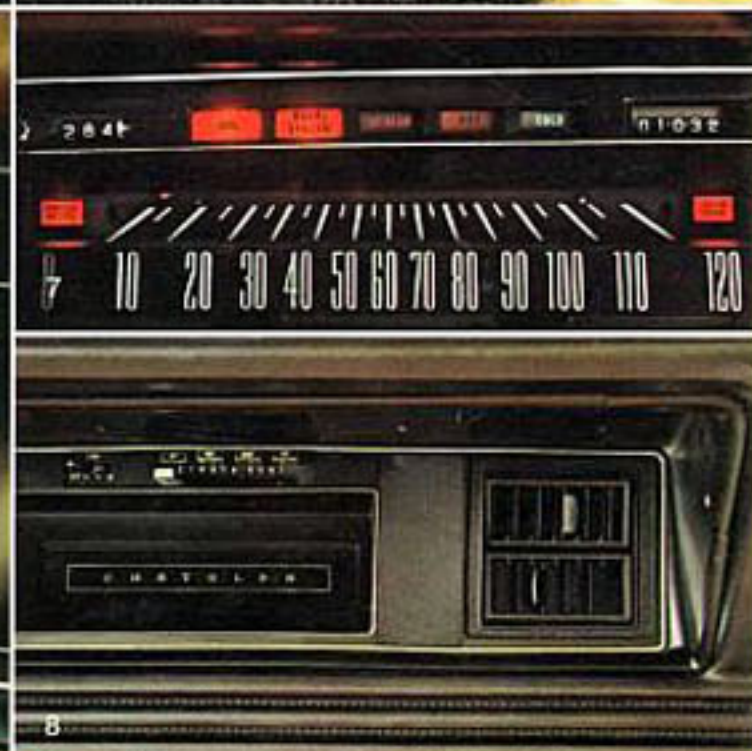
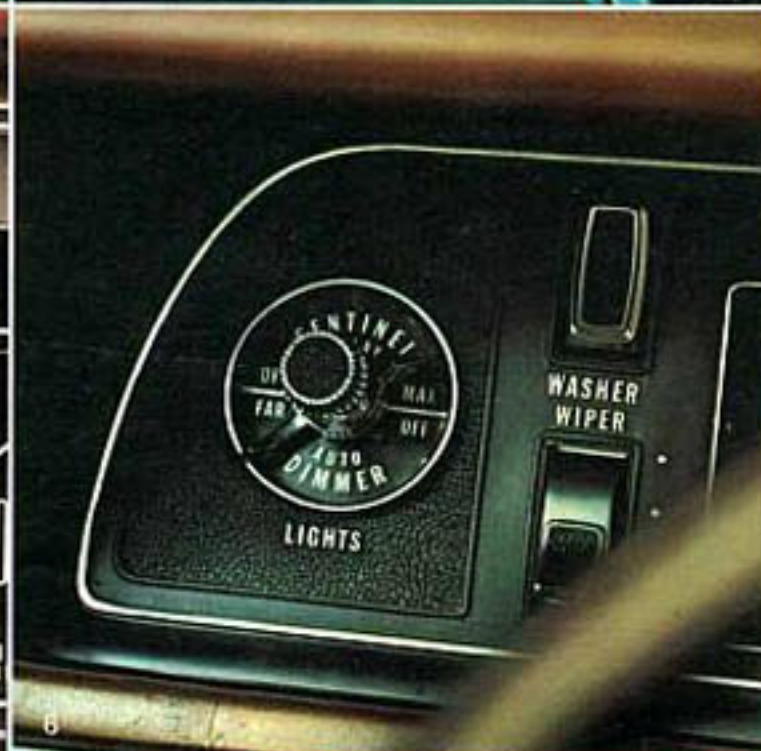
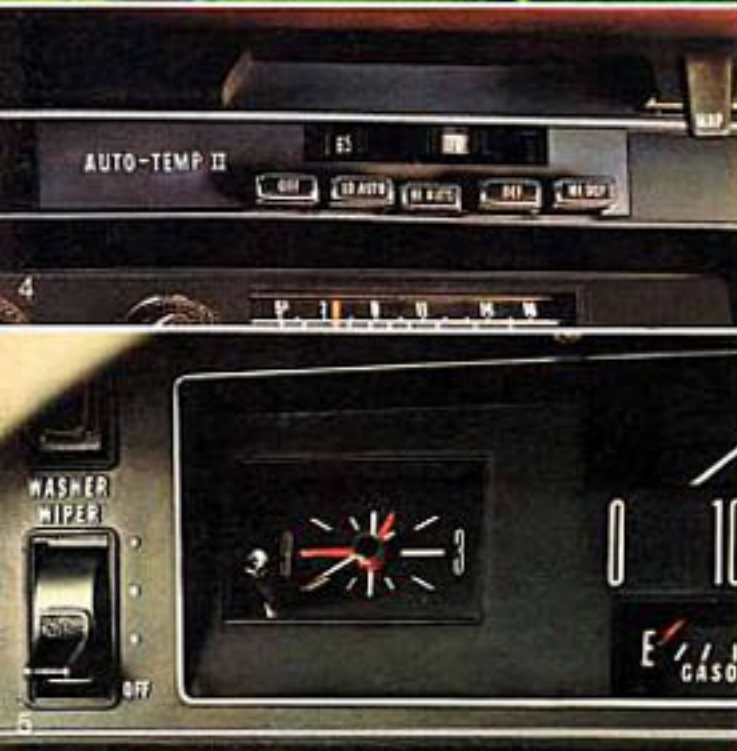


B



Coming through with new options.

For all the living you do—your choice of comfort and convenience options. Ask your Chrysler dealer for more detailed information regarding colors, models and availability.



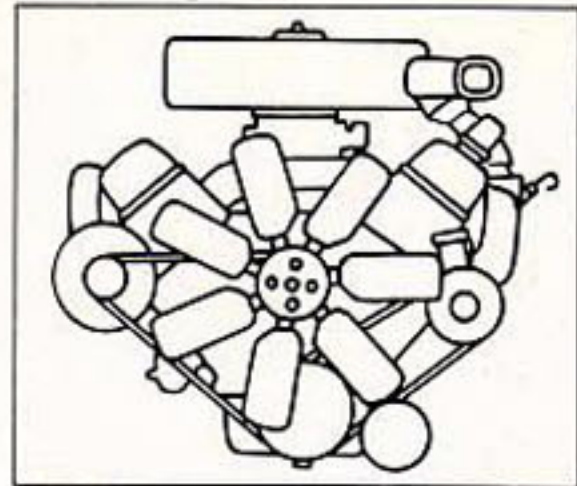
1. **Floor-Mounted Console.** If you've ordered a bucket-seat Chrysler, you can give it the look of an airplane cockpit. 2. **Rear Seat Heater & Rear Window Defroster.** The heater allows rear seat passengers to choose their own level of comfort. The defroster works much like the windshield defroster. 3. **Tilt & Telescope Steering Wheel.** Makes for easier entrances and exits. Can be adjusted to the most suitable position for each driver. 4. **Auto-Temp II.** Keeps the temperature of your Chrysler at a constant comfort level—summer and winter. 5. **Clock.** A timely option. 6. **Headlamp Dimmer.** Automatically dims headlamps for an approaching vehicle and returns lights to regular beam after the vehicle has passed. Also turns lights on at dusk . . . off at dawn. (With Safeguard Sentinel only.) 7. **Driver Aid Package.** Three-in-one option. Low-Fuel and Lock-Door lights plus a Headlights-On warning buzzer. 8. **High Level Ventilation.** Fresh, clean air is vented where it'll do you and your passengers the most good. 9. **Wheel Covers.** More class for your wheels. (Set of four.) 10. **Road Wheels.** Style with sport appeal. (Set of four.) 11. **Wheel Opening Skirts.** A fashionable styling touch. (Std. on Imperial.) 12. **Sun Roof.** Let the sunshine in. Available two-door hardtop models only. 13. **Power Seats.** Effortless adjustments. Available for driver's only or both seats with buckets and 3-in-1 seats. 14. **Auto-Speed Control.** Touch the fingertip control and your Chrysler will automatically maintain that speed until you brake or accelerate. 15. **AM/FM Stereo Radio.** A superb acoustical system. AM radio also available (not on Imperial). 16. **Stereo Cassette Tape System.** Take along your own choice of music. May be ordered with an optional recording microphone. 17. **Sure-Grip Differential.** Helps maintain traction automatically on slippery and rough roads. 18. **Four-Wheel Anti-Skid Brakes.** The only four-wheel system in the industry. Computer controlled for safer, surer stopping and steering on your Imperial. 19. **Door Locks.** Permits you to lock and unlock all doors simultaneously. 20. & 21. **Dual Auto-Temp II.** Allows for independent temperature control for front and rear passengers. Temperature is controlled automatically from front seat. 22. **Power Vent Windows.** Available only when power windows are ordered on Chrysler New Yorker and Imperial four-door hardtop models. 23. **Headlamp Washer.** Washes and scrubs clean your Imperial's headlamps for better visibility. 24. **Deck Lid Release.** Stay in your car while you open your trunk. Power-operated by a control located in the glove compartment.



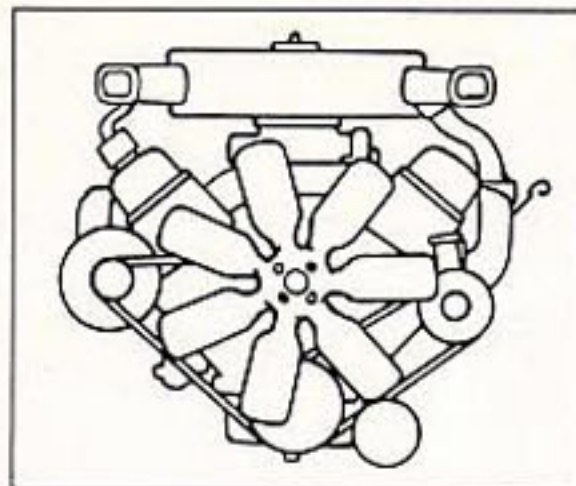
12. **Sun Roof.** Let the sunshine in. Available two-door hardtop models only. 13. **Power Seats.** Effortless adjustments. Available for driver's only or both seats with buckets and 3-in-1 seats. 14. **Auto-Speed Control.** Touch the fingertip control and your Chrysler will automatically maintain that speed until you brake or accelerate. 15. **AM/FM Stereo Radio.** A superb acoustical system. AM radio also available (not on Imperial). 16. **Stereo Cassette Tape System.** Take along your own choice of music. May be ordered with an optional recording microphone. 17. **Sure-Grip Differential.** Helps maintain traction automatically on slippery and rough roads. 18. **Four-Wheel Anti-Skid Brakes.** The only four-wheel system in the industry. Computer controlled for safer, surer stopping and steering on your Imperial. 19. **Door Locks.** Permits you to lock and unlock all doors simultaneously. 20. & 21. **Dual Auto-Temp II.** Allows for independent temperature control for front and rear passengers. Temperature is controlled automatically from front seat. 22. **Power Vent Windows.** Available only when power windows are ordered on Chrysler New Yorker and Imperial four-door hardtop models. 23. **Headlamp Washer.** Washes and scrubs clean your Imperial's headlamps for better visibility. 24. **Deck Lid Release.** Stay in your car while you open your trunk. Power-operated by a control located in the glove compartment.



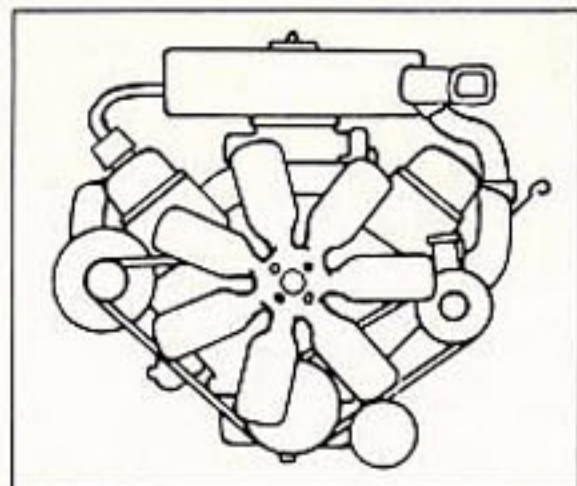
1971 Engines



383 2-bbl.



383 4-bbl.



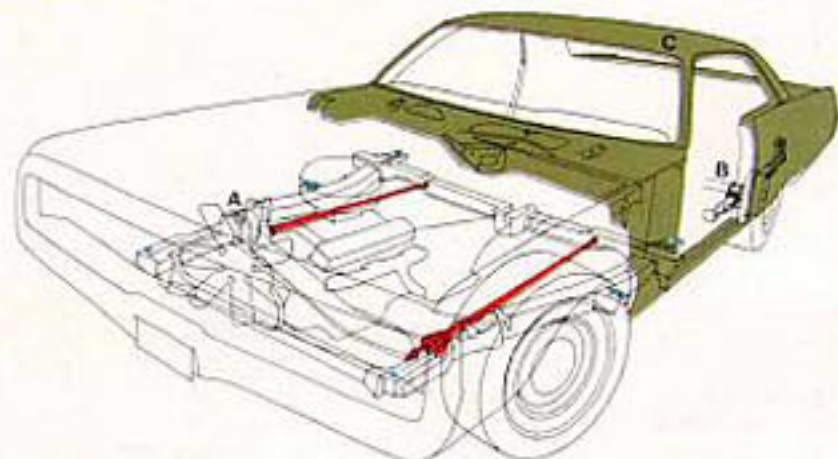
440 4-bbl.

Displacement	Carb.	Horsepower Rating		Comp. Ratio	Air Cleaner	Exhaust System	Newport & Newport Custom	300	Town & Country	New Yorker	Imperial
		Gross	Net*								
383	1, 2-bbl.	275	190	8.5	Silenced	Single	Std.	—	Std.	—	—
	1, 4-bbl.	300	250	8.5	Single Snorkel	Dual	Opt.	—	Opt.**	—	—
440	1, 4-bbl.	335	220†	8.8	Silenced	Single	—	Std.	Opt.	Std.	Std.
	1, 4-bbl.	370	305	9.5	Double Snorkel	Dual	Opt.	Opt.	—	Opt.	—

*Installed †Imperial 230 **With Single Exhaust System

Torsion-Quiet Ride

- A** Torsion bars twist and flex to rid the car of road shock.
- B** Rubber sound isolators separate the chassis from the structure of the car.
- C** Unibody construction has 5,000 individual welds for strength and silence. No body bolts to work loose or rattle.



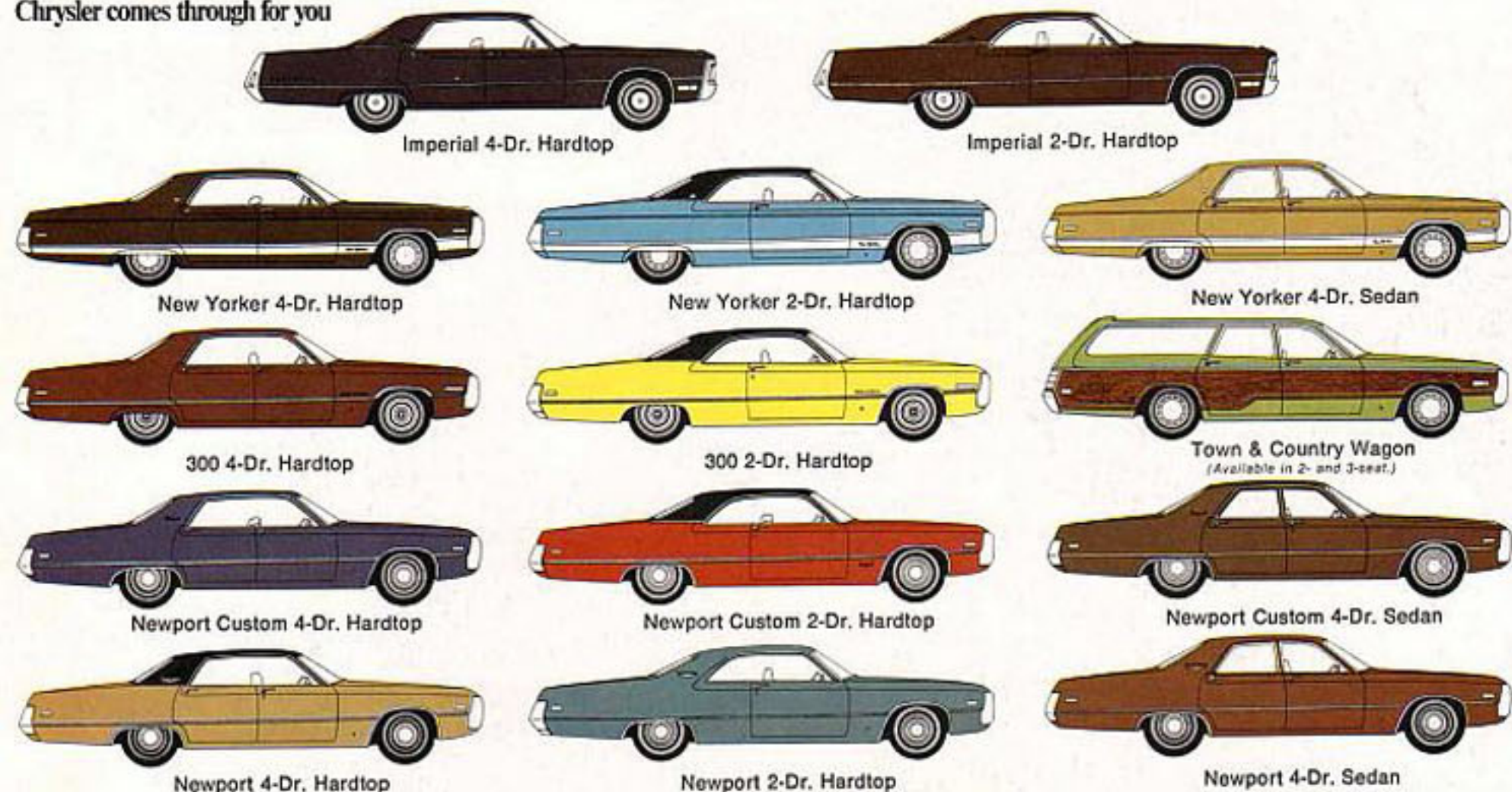
Options	Newport	Newport Custom	300	New Yorker	Town & Country	Imperial
Air Conditioner—Single Manual	O	O	O	O	O	O
Air Conditioner—Dual Manual	NA	NA	NA	NA	O	O
Air Conditioner—Single Auto-Temp II	O	O	O	O	O	O
Dual Auto-Temp II	NA	NA	NA	NA	O	O
Auto-Speed Control	O	O	O	O	O	O
Anti-Skid Brakes	NA	NA	NA	NA	NA	O
Deck Lid Release	O	O	O	O	NA	O
Rear Window Defogger	O	O	O	O	NA	O
Defroster—Rear Window & Rear Seat Heater	O	O	O	O	NA	O
Sure-Grip Differential	O	O	O	O	O	O
Door Guards—2-Door	O	O	O	O	NA	O
Door Guards—4-Door	O	O	O	O	O	O
Power Door Locks—2-Door	O	O	O	O	NA	O
Power Door Locks—4-Door	O	O	O	O	O	O
Automatic Headlamp Dimmer	O	O	O	O	O	O
Mirror—Outside Right	O	O	O	O	O	O
Power Seat Bench	O	O	O	O	O	O
Power Seat—Left (Bucket & 3-in-1 Seats)	O	O	O	O	O	O
Power Seat—Left & Right (Bucket & 3-in-1 Seats)	O	O	O	O	O	O
Power Vent Windows (4-Door Hardtops)	NA	NA	NA	O	NA	O
Radio—AM	O	O	O	O	O	NA
Radio—AM & 8-Track Tape	O	O	O	O	O	NA

O = Optional S = Standard NA = Not Available

Options	Newport	Newport Custom	300	New Yorker	Town & Country	Imperial
Radio—AM/FM Search Tune	O	O	O	O	O	O
Radio—AM/FM Multiplex Stereo	O	O	O	O	O	O
Radio—AM/FM Multiplex & 8-Track Tape	NA	NA	NA	NA	NA	O
Radio—AM/FM Multiplex Stereo & Cassette Tape	O	O	O	O	O	O
Microphone	O	O	O	O	O	O
Safeguard Sentinel	O	O	O	O	O	O
Shoulder Belts—Rear	O	O	O	O	O	O
Tinted Glass	O	O	O	O	O	O
Rim-Blow Steering Wheel	O	O	O	O	O	S
Tilt & Tel. Steering Wheel	O	O	O	O	O	O
Vinyl Roof	O	O	O	O	NA	S
Headlamp Washer	NA	NA	NA	NA	NA	O
Trailer-Towing Package	O	O	O	O	O	O
Whitewall Tires	O	O	O	O	O	O
Sun Roof (2-Door Hardtops)	O	O	O	O	NA	O
High-level Ventilation	O	O	O	O	O	NA
Road Wheels	O	O	O	O	NA	NA
Deep Dish Wheel Covers	O	O	O	O	O	NA
Wheel Opening Skirts	O	O	O	O	NA	S
Spare Tire Cover	NA	NA	NA	O	NA	O
Spare Tire Cover & Carpeting	O	O	O	NA	NA	NA
TorqueFlite Auto. Transmission	O	O	O	S	S	S
Power Disc Brakes	O	O	O	O	S	S
Power Steering	O	O	O	O	S	S
Power Windows	O	O	O	O	O	S



Chrysler comes through for you



*Imperial only. †Chrysler only. All product illustrations and specifications are based on authorized information. Although descriptions are believed correct at publication approval, accuracy cannot be guaranteed. Some of the equipment shown on product illustrations is optional, at extra cost. Chrysler Motors Corporation reserves the right to make changes from time to time, without notice or obligation, in prices, specifications, colors and materials, and to change or discontinue models. Specifications and product descriptions apply to North American-built vehicles only.



Keep your Chrysler coming through in top condition. Service it with men who know it best. See your Chrysler-Plymouth Dealer.



CHRYSLER

