

1981 PLYMOUTH RELIANT K

America's first full line of fuel-efficient, six-passenger, front-wheel drive cars.

RELIANT
FRONT WHEEL DRIVE

K

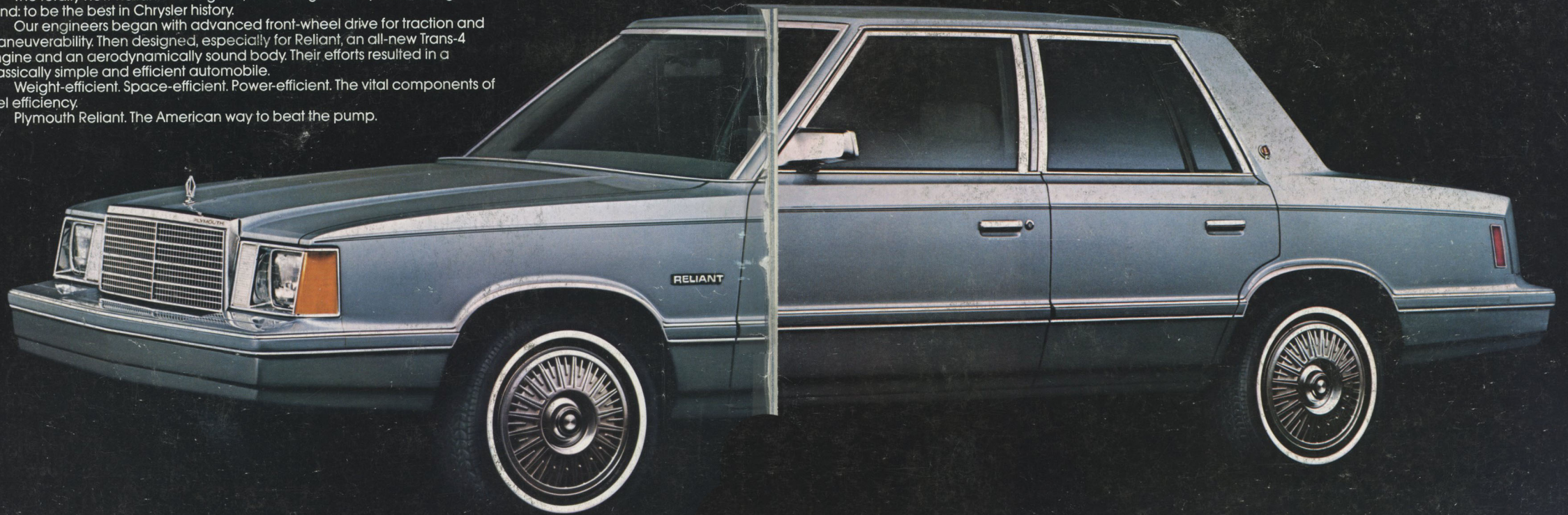
INTRODUCING PLYMOUTH RELIANT K, QUALITY ENGINEERED TO MEET THE NEEDS OF A FUEL-CONSCIOUS AMERICA. THE AMERICAN WAY TO BEAT THE PUMP.

The totally new Reliant K. Designed, from the ground up, with one goal in mind: to be the best in Chrysler history.

Our engineers began with advanced front-wheel drive for traction and maneuverability. Then designed, especially for Reliant, an all-new Trans-4 engine and an aerodynamically sound body. Their efforts resulted in a classically simple and efficient automobile.

Weight-efficient. Space-efficient. Power-efficient. The vital components of fuel efficiency.

Plymouth Reliant. The American way to beat the pump.



Some of the items pictured on vehicles
in this catalogue are extra cost items.

PLYMOUTH RELIANT SPECIAL EDITION SEDAN IN DAYSTAR BLUE METALLIC

CHRYSLER CORPORATION HAS CREATED A PACKAGE OF TECHNOLOGICAL ADVANCES TO MAKE PLYMOUTH RELIANT FUEL-EFFICIENT, EASY TO DRIVE, SIMPLE TO SERVICE AND COMFORTABLE TO RIDE IN.



Here is the inside story of
Reliant's front-wheel drive.

THE ADVANTAGES OF FRONT-WHEEL DRIVE.

Front-wheel drive and high mileage.

The front-wheel drive system utilized in the new Plymouth Reliant may be the most advanced in the world. For the 1981 model year, it is one of the newest designs available. It combines the best features of current technology with numerous innovations from Chrysler engineering.

Plymouth Reliant is some 450 pounds lighter than our primary U.S. competition, yet 3 cubic feet bigger inside.

To improve mileage, Plymouth's new Trans-4 engine uses an Electronic Fuel Control System. Seven sensing devices input to a mini-computer which, in turn, adjusts spark timing and fuel-to-air mixture.

SEDANS

25 **41**

EPA EST. MPG* EST. HWY.

*Use EPA estimated mpg for comparison. Your mileage may differ depending on speed, weather conditions and trip length. Actual highway mileage will probably be less. (California estimates lower).

WAGONS

24 **40**

EPA EST. MPG* EST. HWY.

*Use EPA estimated mpg for comparison. Your mileage may differ depending on speed, weather conditions and trip length. Actual highway mileage will probably be less. (California estimates lower).



Front-wheel drive and six-passenger room.

Automotive engineers acclaim the packaging advantages of front wheel drive (FWD). With the entire drive system forward of the passenger compartment, the front-wheel drive car is more spacious.

The transmission does not intrude into the front passenger area. There's no driveshaft tunnel to intrude into the rear passenger area. This means more useable room everywhere inside the car, and in the trunk as well.

Half a dozen people can be accommodated inside the new Plymouth Reliant.

Front-wheel drive and riding comfort.

Contrary to popular opinion, a heavy car is not necessarily smoother riding than a light car. Ride comfort is determined more by the suspension system and the way it is integrated into the total concept of the car. The Reliant's suspension system incorporates several ride-enhancing design features: all suspension-to-chassis attachment points are rubber-mounted. There is ample wheel travel to deal with road irregularities (4.8" front, 5.2" rear). The use of an anti-roll bar in the front suspension system permits use of low-rate springs, for a smooth ride. And the low unsprung weight of all our suspension members improves both ride and handling.

If you are a big-car owner who is considering a more fuel-efficient car, we urge you to test drive Reliant at your local Chrysler-Plymouth dealer.

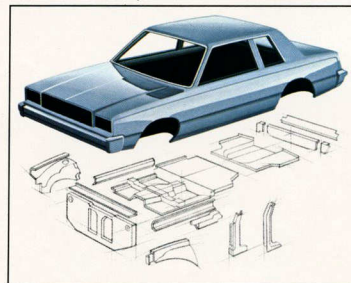
Front-wheel drive and Reliant quality.

We were the first American company to build a small front-drive car. And we have 10 billion U.S. passenger-car miles invested in FWD technology.

This extensive experience gives our customers a second generation front-drive car that they can have confidence in.

Prior to manufacture, Reliant's design was subjected to exhaustive testing. In volume production, we run 54 tests on every Trans-4 engine. Plus we use a special fixture to facilitate precise alignment of the sheet metal parts shown below.

And Chrysler's 30-Day/1,000 Mile Satisfaction Money-Back Guarantee** backs all our quality built front-wheel drive systems.



Front-wheel drive and better traction.

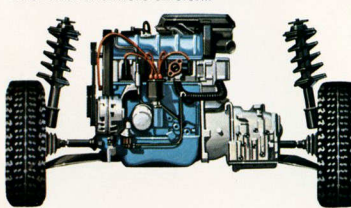


If you are new to a front-drive car, you will find that traction in rain and snow is far superior to the usual front engine/rear-drive car. With the engine directly over the drive wheels, its weight is exactly where it will do the best job of reducing wheelspin on slippery surfaces.

Front-wheel drive and our Direct Power System.

Direct Power is Chrysler Corporation's special interpretation of the front-wheel drive concept for Plymouth Reliant. In it, the engine's power goes directly to the drive assembly to maximize efficiency.

The engine is mounted transversely under the hood, to conserve interior space and reduce weight. These basic design advantages set off a chain of opportunities to make the entire car more functional and more efficient.



FRONT-WHEEL DRIVE AND CHRYSLER QUALITY ENGINEERING

1. Lightweight rear suspension complements front-drive system. With no heavy power transmission components, it can track better over road irregularities, for better ride and handling.

2. Torsion tube functions as a sway bar, to limit body roll in cornering. Axle drop is designed to create more trunk and rear seat room.

3. Coil springing has a full 5.2" of deflection/rebound travel, and spring rates are selected to produce a ride that may surprise you in a car this size.

4. Rear suspension is precisely located by a three-point system: trailing links provide fore-and-aft location, and a transverse track bar resists deflection forces in the turns.

5. The shock absorbers are long-travel units, designed to optimize handling and ride comfort.

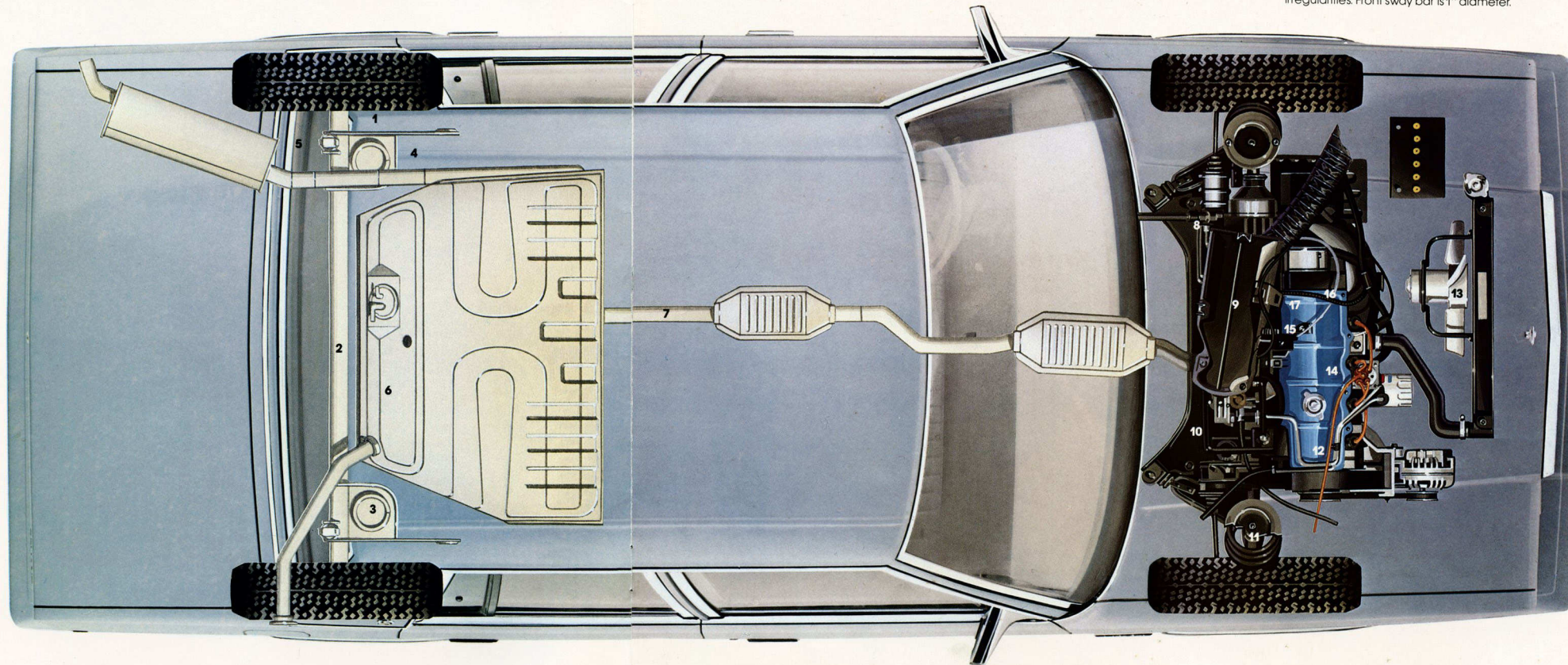
6. Fuel tank (13-gal.) location, inboard of the rear axle, improves weight distribution and reduces pitching.

7. Exhaust system, running down the center of the car, is shorter and lighter. Placement here allows the floor pan to be lower in the foot-well area, for more interior room.

8. Steering system is rack-and-pinion, lighter and more precise than recirculating ball design found on many conventional cars.

9. Drive system is fully independent. Its reduced unsprung weight is comparable to that of the rear suspension, to produce better handling and a better ride.

10. Front suspension is a Chrysler Iso-Strut design, with a geometry designed to reduce dive in braking and maintain camber as wheels are deflected by road irregularities. Front sway bar is 1" diameter.



11. Front coil spring/shock absorber unit saves weight by combining three functions (it also locates the front suspension). It provides 4.8" of wheel travel, for ride comfort.

12. Mounting the engine transversely saves space, which is added to passenger room and results in reduced front overhang. The engine is slanted backwards at a 12° angle, for a lower hood profile.

13. Electric radiator fan increases maximum output of the engine (the typical fan can absorb 2 horsepower).

14. The 2.2L engine abounds with low and no-maintenance features, including hydraulic valve lifters; electronic ignition (no points or condensers); long-life engine components such as chrome valve stems, cobalt alloy valve seats and moly-faced compression rings, as well as self-adjusting clutch.

Optional 2.6 liter Mitsubishi engine features Silent Shaft design and 3-valve MCA-JET cylinder head with hemispherical combustion chamber. This quality built engine provides the Reliant owner with additional performance, in combination with good fuel economy.

15. The new Trans-4 engine is a modern overhead camshaft design with innovative self-adjusting hydraulic lifters. Developed expressly for FWD, it features same-side intake/exhaust porting and weighs only 298 pounds. This makes Reliant one of the better balanced front-drive cars, with only 60% of its weight on the front wheels.

16. Also designed expressly for FWD, the manual gearbox is fully synchronized in all forward gears, and has an integral overdrive ratio fourth gear.

17. The differential is integral with the transaxle casing, for reduction of weight.

Front-wheel drive and easier servicing.



Not all FWD systems are built specifically for ease and economy of service. The Plymouth Reliant is the product of the combined knowledge of many Chrysler engineers, welded into a team committed to creating a highly serviceable front-drive package.

Most routine maintenance can be done with ease by the driveway mechanic, including spark plug changing, fuses, instrument panel lights, drive belt adjustment, oil and air filter replacement, and access to battery terminals.

If you have servicing done by the dealer, you will probably find that servicing bills are lower than for your previously owned vehicle, due to the ease-of-service features incorporated into your Reliant.

**Buy a new 1981 Plymouth Reliant for personal use. Drive it for 30 days or 1000 miles, whichever comes first. Then, if you're not happy with it, just bring it back in good condition with no metal damage. When the dealer gets clear title, you get your money back, excluding finance and insurance charges. Ask your participating dealer for details. Refund value of trade-in may differ from trade-in allowance on retail sales contract.



ROOM FOR SIX IN LUXURY.

Though trim and compact on the outside, Reliant comfortably seats six, thanks to Chrysler's front-wheel drive system. With all the power train components placed over the front wheels and the transmission floor "hump" eliminated, there's plenty of front and rear leg room. Reliant 4-door boasts 52.2 cubic feet in the front, 43.4 cubic feet in the rear and a total passenger EPA Volume Index of 110.6 cubic feet. Six people can comfortably relax without the pinched-in feeling you sometimes get in smaller cars.

True to the Chrysler tradition, Reliant's Special Edition interior (pictured right) reflects the utmost in distinctive styling and good taste.

RELIANT SPECIAL EDITION INTERIOR IN LIGHT BLUE.



CALL IT FUN. CALL IT RESPONSIVE. CALL IT THE PLYMOUTH RELIANT SPECIAL EDITION 2-DOOR. A NEW, PERSONAL-SIZE LUXURY CAR FOR 1981.

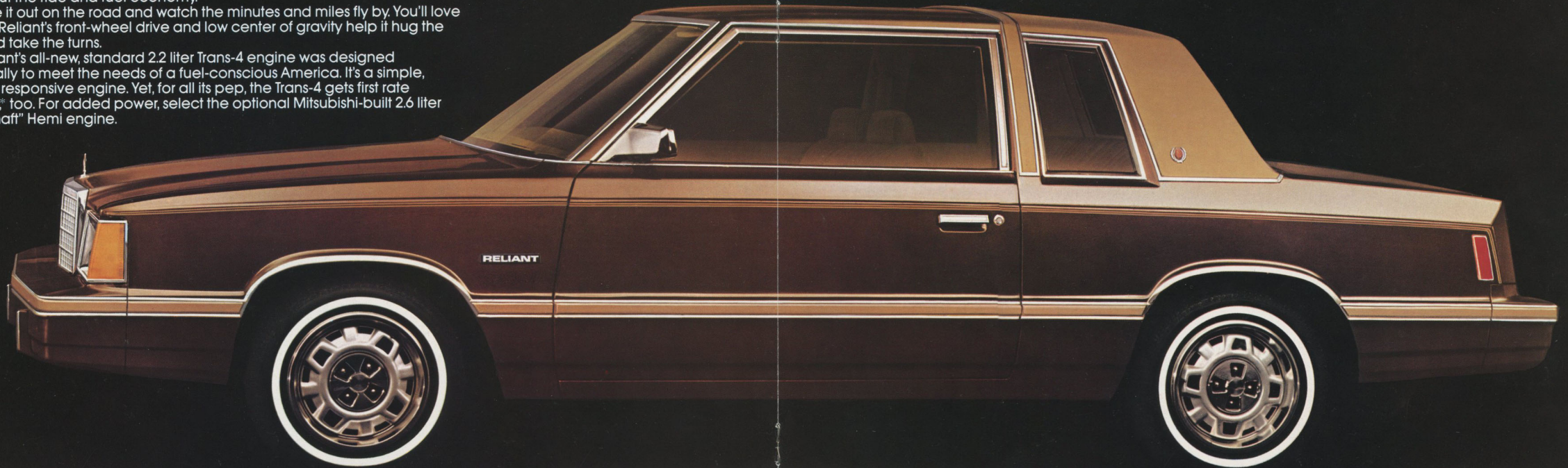
Check out the styling.

It's sporty. It's sophisticated. It's classic. It's clean.

Check out the ride and fuel economy.

Take it out on the road and watch the minutes and miles fly by. You'll love the way Reliant's front-wheel drive and low center of gravity help it hug the road and take the turns.

Reliant's all-new, standard 2.2 liter Trans-4 engine was designed specifically to meet the needs of a fuel-conscious America. It's a simple, efficient, responsive engine. Yet, for all its pep, the Trans-4 gets first rate mileage,* too. For added power, select the optional Mitsubishi-built 2.6 liter "Silent Shaft" Hemi engine.



PLYMOUTH RELIANT SPECIAL EDITION 2-DOOR IN SPICE TAN STARMIST

RELIANT ENGINES. Features common to the standard 2.2 engine and optional Mitsubishi 2.6 engine: 4 cylinders. Cast iron block. Aluminum head. 5 main bearings. Single overhead camshaft. 2-barrel carburetion. Electronic ignition.

INDIVIDUAL FEATURES:	2.2L. Chrysler Engine	2.6L. MCA-JET Engine
Displacement	2.2 Liters (135 CID)	2.6 Liters (156 CID)
Bore and stroke	3.44 x 3.62	3.59 x 3.86
Compression ratio	8.5:1	8.2:1
Horsepower	84 @ 4400 rpm	92 @ 4500 rpm
Torque	111 ft. lbs. @ 2800 rpm	178 ft. lbs. @ 2500 rpm

PLYMOUTH RELIANT CUSTOM SEDAN. A SOLID VALUE FOR INFLATIONARY TIMES.



PLYMOUTH RELIANT CUSTOM SEDAN IN NIGHTWATCH BLUE

It's practical.

Reliant's spacious enough on the inside to carry the entire crew in comfort. Trim enough on the outside to make parking a breeze. And fuel-efficient enough to make the most of every dollar you spend for gasoline.

It's personable.

Reliant's classic styling makes it every bit as right for a night on the town as it is for a day at the beach. And

Reliant's responsiveness and handling make it lots of fun to drive, too.

It's luxurious.

Get behind the wheel and lean back into the soft, optional contoured vinyl bucket seats. Grip the floor-mounted gear shift. Scan the woodtone instrument panel, (shown right) equipped with optional AM/FM stereo radio, air conditioning and digital clock. Enjoy fingertip

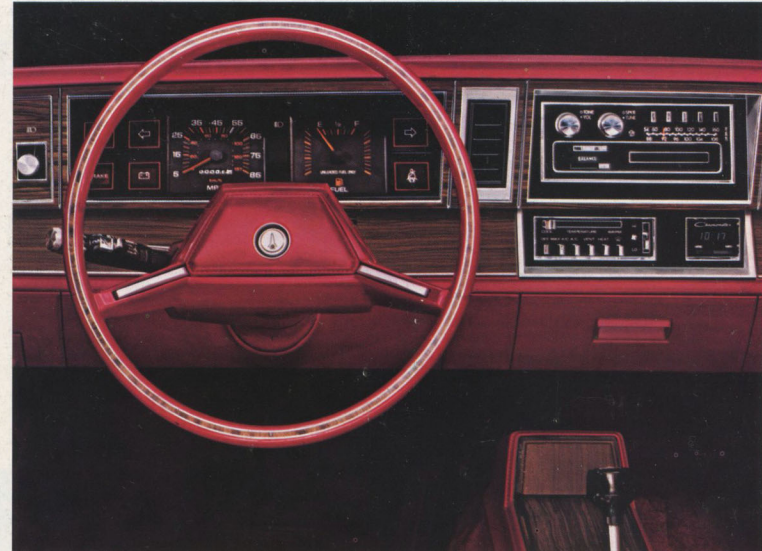
convenience with the steering column-mounted control lever, where you'll find turn signals, headlamp dimmer, wash/wipe and optional speed control with intermittent wipers.

It's well-equipped.

Standard features like these make Reliant Custom an impressive value for the money. Transverse 2.2 liter engine Iso-Strut front suspension

Rack-and-pinion steering Front disc brakes Fiberglass-belted radial tires Electronic ignition Color-keyed protective bumper rub strips and wide vinyl bodyside moldings AM radio Plush cut-pile carpeting Cigarette lighter Glove box lock Deluxe steering wheel Deluxe color-keyed seat belts Multifunction steering column lever Day/night inside mirror and much more.

SPECIAL EDITION INTERIOR



PLYMOUTH RELIANT SPECIAL EDITION INSTRUMENT PANEL SHOWN WITH LUXURY 2-SPOKE STEERING WHEEL



PLYMOUTH RELIANT SPECIAL EDITION ALL-CLOTH BUCKET SEAT INTERIOR, OPTIONAL ON ALL SPECIAL EDITION MODELS.

PLYMOUTH RELIANT STATION WAGON. THE ONLY AMERICAN-BUILT MID-SIZE STATION WAGON WITH FRONT-WHEEL DRIVE!

It's another first from The New Chrysler Corporation. America's only front-wheel drive mid-size station wagon that offers you full 6-passenger room, with the handling and economy of a smaller car.



PLENTY OF CARGO SPACE.

The new Plymouth Reliant Station Wagon handily holds almost any cargo—groceries, camping equipment, luggage or antiques. Got to fit in the St. Bernard? No problem. Loading is easy in our new Reliant Wagon. With the flick of a lever, the rear seat folds down to provide 69.2 cubic feet of storage area. And Reliant's peppy 2.2 liter engine can haul most any load you'd care to carry.

Easy access to the cargo area from all sides is provided by both rear doors... and a rear liftgate that swings up and out of the way. You don't have to crawl, duck or stretch to load this wagon.

A carpeted cargo area protects your belongings from scratches on bumpy roads with a thick cut-pile carpet, standard.



EASY MANEUVERING.

You'll find this wagon surprisingly easy to handle and fun to drive, thanks to Reliant's front-wheel drive, rack-and-pinion steering and power front disc brakes. Backing up, parking and edging into heavy traffic is even easier with Reliant's optional power steering and 34.3 feet turning diameter.

PLENTY OF PEOPLE-ROOM.

Reliant can handle the whole crowd. Mary, Daryl,

John and Sue—even little Lisa and her simulated volcanic science project! In fact, when it comes to interior room, Reliant has more passenger room and more total interior space than the 1980 VW Dasher. With Reliant's rear seat up, you get full six-passenger seating!

Like to add to your fun and convenience? Then select any of the Reliant Wagon options.

The optional remote-control power liftgate release, for instance, lets you open the rear door from the driver's seat so you don't have to fumble with keys again.

For longer trips and larger loads, there's Reliant's optional luggage rack. Your luggage can be securely and safely stored on top of the car, to give you more room and comfort while you're on the road.

And Reliant's optional Tonneau Cover keeps packages in the cargo area out of sight while you're in town shopping.



FRONT-WHEEL DRIVE TRACTION CAN MEAN ADDED SECURITY WHEN THE GOING GETS ROUGH.

Reliant's front-wheel drive traction and glass-belted radial tires help pull you through slippery turns and claw you out of ruts in rain and snow.

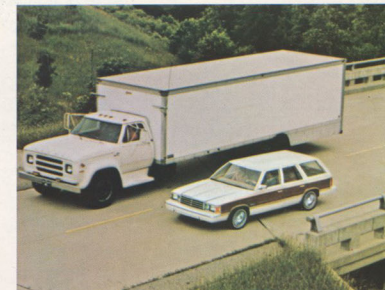
To help ensure clear visibility, whatever the weather, Reliant offers an optional rear window wash/wipe system and rear window defroster.

EXPRESSWAY MERGING AND PASSING POWER.

Rest assured that Reliant's energetic 2.2 liter Trans-4 engine can deliver the power you need to merge

into traffic and pass at expressway speeds. And that's even with a wagonload and automatic transaxle.

Take along your trailer. Reliant's Trans-4 engine can handle most boat, snowmobile or small camping trailers of up to 1000 pounds with a maximum frontal area of 30 square feet. And our optional Mitsubishi-built 2.6 MCA-JET Silent Shaft engine can easily haul trailers of up to 1500 pounds. We suggest that you investigate optional heavy-duty suspension, automatic transaxle and an engine cooling package if you opt to travel with a small trailer.



OUR RELIANT WAGON LOVES FAMILIES.

Reliant was designed not only to carry your family in roomy comfort, but to carry them in safety.

Galvanized sheet metal construction in critical areas and automatic computerized welding machines protect your family with strong, durable body construction.

Front and rear bumpers are made with high-strength steel beam construction and covered with a soft color-keyed fascia.

Ample glass areas provide sweeping visibility in every direction.

And in the tradition of other tried and true Chrysler engines like the Slant Six, Reliant's 2.2 liter engine is built to last. It is a remarkably durable engine with extra quality built into features like the chrome plated valve system and cobalt-based alloy exhaust seat inserts. Rubber engine mounts, overhead cam, hydraulic adjusters help to make this an unusually quiet and reliable engine.

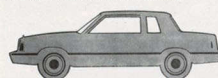
In addition, Chrysler engineers had your safety in mind when they designed the diagonally-balanced braking system. With this design, the hydraulic brakes are diagonally divided so that in the event of a partial system failure, the brakes still have enough bite to stop safely. The brake system warning light, mounted on the instrument panel, warns of potential problems.

Plymouth Reliant. The first American-built, front-wheel drive mid-size station wagon. It does so much to put your mind at ease.



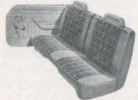
PLYMOUTH RELIANT SPECIAL EDITION STATION WAGON IN PEARL WHITE

RELIANT COUPE EXTERIOR



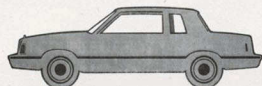
- RELIANT COUPE** Includes • Bright windshield moldings • Bright headlamp bezels • Bright grille surround • Available in tan, white and black • AM radio not standard.

RELIANT COUPE INTERIOR

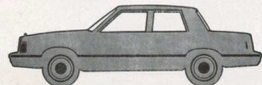


- RELIANT COUPE CLOTH AND VINYL SPLIT BACK BENCH SEAT** Standard on Reliant Coupe. Offered in Cashmere only.

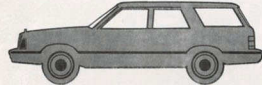
RELIANT CUSTOM EXTERIOR



- RELIANT CUSTOM 2-DOOR** Includes • All 2-door features plus • Quarter-window louvers • Bright taillight trim and much more.



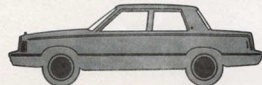
- RELIANT CUSTOM 4-DOOR** Includes • Bright windshield moldings • Bright headlamp bezels • Bright grille surround with integral Plymouth name • Wide vinyl bodyside moldings and much more.



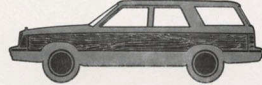
- RELIANT CUSTOM STATION WAGON** Includes • Bright windshield moldings • Bright headlamp bezels • Bright grille surround with integral Plymouth name • Wide vinyl bodyside moldings and much more.



- RELIANT SPECIAL EDITION 2-DOOR** Includes all the Custom 2-door features plus • Bright deck lid and quarter-window moldings • Deluxe wheel covers • Body accent stripes • Special Edition plaque.



- RELIANT SPECIAL EDITION 4-DOOR** Includes all of the Custom 4-door features plus • Bright deck lid and window moldings • Deluxe wheel covers • Body accent stripes • Special Edition plaque on rear roof pillars.



- RELIANT SPECIAL EDITION STATION WAGON** Includes all the Custom Wagon features plus • Woodtone bodyside and liftgate appliques with woodtone surround moldings • Deluxe wheel covers.

RELIANT CUSTOM INTERIOR



- RELIANT CUSTOM ALL-VINYL BENCH SEAT** Standard on custom 2-seat wagons and optional on 2- and 4-door custom models. Wagons have fold-down rear seat. Offered in Light Blue, Light Green, Red and Cashmere.



- RELIANT CUSTOM ALL-VINYL BUCKET SEATS** Optional on all custom models. Wagons have fold-down rear seat. Offered in Light Blue, Red and Cashmere.



- RELIANT CUSTOM CLOTH AND VINYL BENCH SEAT** Standard on 2- and 4-door custom sedan models only. Offered in Light Blue, Light Green, Red and Cashmere.

RELIANT SPECIAL EDITION INTERIOR



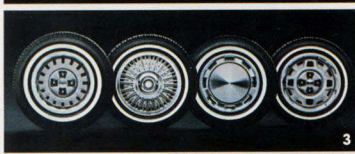
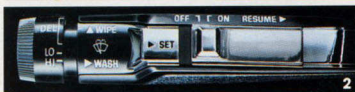
- RELIANT SPECIAL EDITION ALL-CLOTH BENCH SEAT** Standard on all Special Edition models. Wagons have fold-down rear seat. Offered in Light Blue, Light Green, Red and Cashmere on 2- and 4-door models. Red and Cashmere on wagons.



- RELIANT SPECIAL EDITION ALL-CLOTH BUCKET SEATS** Optional on all Special Edition models. Wagons have fold-down rear seat. Offered in Light Green, Red and Cashmere.



- RELIANT SPECIAL EDITION ALL-VINYL BUCKET SEATS** No-cost option on all Special Edition models. Wagons have fold-down rear seat. Offered in Light Blue, Red and Cashmere.



PICTURED OPTIONS

1. Convenient rear window wiper/washer is available on Reliant Station Wagons.
2. Automatic speed control is integrated with multifunction control lever that includes intermittent wiper option.
3. Wheel and wheel cover options, shown left to right: 13" Steel Rallye Road Wheel, 14" luxury wheel cover, Special Edition 13" deluxe wheel cover, 14" Rallye Road Wheel.
4. Luggage rack for Reliant Station Wagon has roof top rub strips and adjustable crossrails.
5. AM/FM multiplex stereo with precision, solid-state electronics.
6. AM/FM stereo cassette tape player features Dolby® noise reduction system that minimizes tape hiss on Dolby-encoded cassette cartridges. *Dolby is a trademark of Dolby Laboratories, Inc.
7. Electric rear window defroster removes fog or frost from most of the window's surface.
8. Power front seats make adjusting your driving position convenient and easy.
9. Air conditioning unit has four air outlets in instrument panel and four-speed fan switch.

OPTIONS

- Air conditioning (requires power disc brakes, power steering, tinted glass)
- Battery—500 ampere, Long-Life (maintenance-free)
- Front and rear bumper guards
- Clock—digital
- Console (TorqueFlite and bucket seats required)
- Maximum engine cooling (recommended for vehicles to be equipped with field-installed AC)
- Rear window defroster (required on all 2- and 4-door models in New York State)
- Emissions Control System (required on all vehicles in California)
- Gas cap—locking
- Tinted glass—all windows (recommended with air conditioning)
- Headlamps—halogen
- Horns—dual (std. Special Edition)
- Lower body vinyl protection
- Luggage rack (not available with vinyl roof on 2-door model)
- Front and rear floor mats
- Suspension—heavy-duty (includes heavy-duty springs, shocks and larger diameter sway bar on sedans)
- Speed control—automatic (deluxe intermittent windshield wipers required)
- Sunroof—glass (available on 2- and 4-door models only). Removable glass with storage bag
- Trunk dress-up (2- and 4-door models only)
- Undercoating
- Windshield wipers—deluxe (with intermittent wiper. Required with speed control and tilt steering column)
- Wiper/washer—liftgate (station wagon only)
- Special sound insulation (std. on Special Edition models)

OPTIONAL PACKAGES

Available on all models.

- LIGHT PACKAGE (STD. W/BASIC GROUP)** Trunk light (available on 2- and 4-door models only) • Cargo light (available on wagon only) • Glove box light • Ash receiver light • Ignition switch time-delay light • Headlights on warning buzzer • Rear door dome light switch • Under hood light • Dome reading light
- BASIC GROUP (NOT AVAIL. WITH MANUAL TRANS.)** TorqueFlite automatic transaxle • Power steering • Light package • Deluxe wheel covers (std. on Special Edition models) • P175/75R13 white sidewall tires • Left outside remote-control mirror (std. on Special Edition models) • Deluxe windshield wipers w/intermittent wiper • Dual horns (std. on Special Edition models) • Note: wheel covers, tires and mirrors can be upgraded at differential prices.
- PROTECTION GROUP** Vinyl protection coating on lower body • Protective door edge moldings • Front and rear code-keyed bumper guards

MIRRORS

- Vanity mirror—right side
- Vanity mirror—both sides
- Remote-control—outside left: chrome (Custom)
- Remote-control—outside right: chrome (Special Edition)
- Remote-control—outside dual: chrome (Custom)
- Remote-control—outside dual: painted body color (limited color selection)

MOLDINGS

- Door edge protectors
- Sill
- Pedal dress-up (TorqueFlite automatic transaxle required)
- Upper door frame and belt

ENGINES

- Standard 2.2 liter (133 CID) 4-cylinder
- Optional Mitsubishi 2.6 liter (158 CID) 4-cylinder MCA-JET engine (includes 75 ampere alternator and requires power disc brakes. Hood insulation pad deleted)

WHEEL COVERS AND ROAD WHEELS

All wheel covers and road wheels available in sets of four.

- 13" Deluxe wheel covers (std. on Special Edition models)
- 14" Luxury wheel covers (Available with 14" tire option only)
- 13" Rallye Road Wheels (steel wheels with styled center and trim rings)
- 14" Rallye Road Wheels (painted steel wheels with styled center and trim rings). Steel wheels with styled center and trim rings (Available with 14" tire option only)

TIRES

- P175/75R13 glass-belted radial white sidewall tire
- P185/70R13 steel-belted radial white sidewall tire
- P185/65R14 glass-belted radial white sidewall tire
- P185/65R14 steel-belted radial white sidewall tire

RADIOS AND SPEAKERS

- AM/FM radio
- AM/FM stereo radio
- AM/FM stereo with CB and Tri-Band antenna (includes 4 speakers—2 front and 2 rear)
- AM/FM stereo with 8-track tape player (includes 4 speakers—2 front and 2 rear)
- AM/FM stereo with cassette tape player (includes 4 speakers—2 front and 2 rear)
- Rear speaker—single, monaural radios only
- Radio upgrade—dual front speakers (pre-wired for rear speakers, monaural radios only)
- Premium speaker system (not available with monaural radios). Concert hall sound with 15 watt speaker system. Rear coaxial speakers powered by special amplifier to provide a wide-band, high-fidelity frequency response at much greater power level than standard rear speaker systems.

STEERING WHEELS

- Luxury—2-spoke (std. on Special Edition models)
- Sport
- Deluxe—2-spoke (std. on custom models)
- Tilt steering column (required with deluxe intermittent windshield wipers)

POWER ASSISTS

- Disc brakes (std. on wagon)
- Door locks (require dual outside remote-control mirrors)
- Deck lid/liftgate w/TorqueFlite trans. only (wagon)
- Seats (bench seat requires TorqueFlite)
- Steering (required with AC and 2.6 liter Mitsubishi MCA-JET engine)

STANDARD SPECIFICATIONS

ENGINE: 2.2 liter (133 CID) 4-cylinder
 TRANSAXLE: 4-speed manual floor shift
 SUSPENSION: Front—Iso-Strut with coil spring
 Rear—Flex Arm Beam Axle with trailing links and coil springs.
 TRANSAXLE OVERALL TOP RATIO: 2.6 (4-speed manual)
 TIRES: P175/75R13—Glass-belted radial black sidewall
 BRAKES: Front—disc; rear—drum
 ELECTRICAL: Battery—310 ampere
 Alternator—60 ampere

DIMENSIONS, WEIGHT AND CAPACITY

LENGTH: 176.0" (176.2" wagon)
 WIDTH: 68.6"
 HEIGHT: 52.7" (4-door) 52.4" (2-door) 52.8" (wagon)
 WHEELBASE: 99.6"
 TURNING DIAMETER: 34.3'
 CURB WEIGHT: estimated with 2.2 liter engine
 2338 lbs. (4-door) 2332 lbs. (2-door)
 2402 lbs. (wagon)
 TRACK: (FRONT/REAR) 57.6"/57.0"
 TRUNK CAPACITY: (ESTIMATED) 45.0 cu. ft. (2 & 4-door)
 CARGO CAPACITY: 69.2 cu. ft. (wagon-seat down)
 PASSENGER CAPACITY: 6 (3/3 bench) (2/3 bucket)
 FUEL CAPACITY: 43 gallons

COLORS

Exterior Colors*



*Colors shown here are a printed representation. For accurate color selection, see your Chrysler-Plymouth dealer.

Exterior color code.

RELIANT STANDARD FEATURES AND POPULAR OPTIONS

	Custom		Special Edition			Custom		Special Edition	
	2/4-dr.	wagon	2/4-dr.	wagon		2/4-dr.	wagon	2/4-dr.	wagon
Front-wheel drive	\$	\$	\$	\$	Drip rail moldings	\$	\$	\$	\$
Transverse 2.2 liter 4-cyl. engine	\$	\$	\$	\$	Beil moldings	O	O	\$	\$
Transverse 2.6 liter 4-cyl. engine	O	O	O	O	Left outside remote-control mirror	O	O	\$	\$
4-speed manual transaxle (NA w/2.6L)	\$	\$	\$	\$	Quarter window louvers (2-dr. only)	O	—	\$	—
3-speed automatic transaxle	O	O	O	O	Deluxe wheel covers	O	O	\$	\$
Electronic combustion computer (NA w/2.6L)	\$	\$	\$	\$	6-passenger seating (w/bench seat)	\$	\$	\$	\$
Electronic feedback carb. (NA w/2.6L)	\$	\$	\$	\$	Custom cloth and vinyl bench seat	O	—	—	—
Electronic ignition & voltage regulator	\$	\$	\$	\$	Custom vinyl bench seat	O	\$	—	—
Electric cooling system fan	\$	\$	\$	\$	Special Edition cloth bench seat	—	—	\$	\$
60 amp. alternator (75 amp. w/2.6L)	\$	\$	\$	\$	All vinyl bucket seats	O	O	O	O
30 ampere battery	\$	\$	\$	\$	All cloth bucket seats	—	—	O	O
Battery test indicator	\$	\$	\$	\$	Adjustable head restraints	\$	\$	\$	\$
Coolant overflow reservoir	\$	\$	\$	\$	Woodtone appliques on door trim panels	—	—	\$	\$
Iso-Strut front suspension	\$	\$	\$	\$	Woodtone accents on instrument panels	\$	\$	\$	\$
Rack-and-pinion steering	\$	\$	\$	\$	Deluxe color-keyed seat belts	\$	\$	\$	\$
Power steering	O	O	O	O	Deluxe steering wheel	\$	\$	—	—
Front disc brakes, rear drum brakes	\$	\$	\$	\$	Luxury steering wheel	O	O	\$	\$
Power brakes	O	\$	O	\$	Multifunction steering column lever	\$	\$	\$	\$
Fiberglass-belted radial tires—blackwall	\$	\$	\$	\$	w/windshield wiper/washer, headlamp dimmer & turn signals	\$	\$	\$	\$
Tire tread life wear indicators	\$	\$	\$	\$	Semi-concealed wipers	\$	\$	\$	\$
High pressure compact spare tire	\$	\$	\$	\$	AM radio	\$	\$	\$	\$
Full-flex bumpers	\$	\$	\$	\$	Cigarette lighter	\$	\$	\$	\$
Dual horns	O	O	\$	\$	Glove box lock	\$	\$	\$	\$
Special sound insulation	O	O	\$	\$	Day/night inside mirror	\$	\$	\$	\$
Hood insulation pad (NA w/2.6L)	\$	\$	\$	\$	Front ash receiver	\$	\$	\$	\$
Unlitzed body construction	\$	\$	\$	\$	Rear ash receivers	\$	\$	\$	\$
Galvanized body sheet metal & corrosion prot.	\$	\$	\$	\$	Upper level forced ventilation w/dual instrument panel outlets	\$	\$	\$	\$
Protective front and rear bumper rub strips	\$	\$	\$	\$	Rear door vent windows (4-dr. & wagon)	\$	\$	\$	\$
Wide body-side protection moldings	\$	\$	\$	\$	Carpeted passenger compartment	\$	\$	\$	\$
Woodtone applique on body-side & liftgate	—	—	—	\$	Trunk floor mat	\$	\$	\$	\$
Body-side accent stripes	—	—	\$	—	Cloth covered headliner	\$	—	\$	—
Upper door frame moldings	O	O	\$	\$	Perforated composition headliner	\$	\$	—	\$
					Dome light	\$	\$	\$	\$

\$—Standard O—Optional —Not Available

SAFETY FEATURES

- Backup lights • Brake system warning light • Left rearview mirror • Dual diagonal braking system with separate brake fluid reservoirs in the master cylinder • Energy-absorbing steering column
- Fade-resistant front disc brakes • Glare-reduction measures for windshield wipers, instrument panel and steering wheel • Hazard warning flasher system
- Headlamp and wiper circuit breakers with automatic reset • Ignition and steering column lock
- Interlocking door latches • "Key-left-in-ignition" buzzer • Padded sun visors • Recessed inside door release handles • Side door beams

CORROSION PROTECTION

Chrysler Corporation's corrosion protection includes the use of galvanized sheet metal panels, one of the best known methods of corrosion protection, as well as the seven-step dip-and-spray process.

5/50 PROTECTION PLAN



This optional service contract, the longest protection plan* of any domestic manufacturer, covers major power train components for five years or 50,000 miles (whichever comes first) from the time you take original delivery of your new

Reliant. The plan, which begins after limited warranty expires, has a \$50 deductible per repair visit, also has an allowance for alternate transportation and towing. Ask your dealer for full details.

*Provisions of plan may vary with manufacturer.

LEASING PROGRAM

Leasing has become a viable option for many of today's consumers. It allows you the use of a car without losing money on a depreciating investment. By leasing, you'll probably be driving a new car more often than you are now.

For complete details, see the leasing manager at your Chrysler-Plymouth dealer.

PLYMOUTH RELIANT. QUALITY ENGINEERED BY THE NEW CHRYSLER CORPORATION AND BACKED BY A 30-DAY/1,000 MILE SATISFACTION MONEY BACK GUARANTEE.

MOPAR parts are engineered by The New Chrysler Corporation for use in your new Plymouth. When replacement is necessary, be sure to specify MOPAR parts. Used by professional mechanics all over the world.

All product illustrations and specifications are based on authorized information. Although descriptions are believed to be correct at publication approval, accuracy cannot be guaranteed. Some of the equipment shown on product illustrations is optional, at extra cost. Chrysler Corporation reserves the right to make changes from time to time, without notice or obligation in prices, specifications, colors and materials, and to change or discontinue models. See your dealer for the most current information.

BUY OR LEASE A PLYMOUTH RELIANT

