



zoom-zoom



YOU NEVER OUTGROW YOUR NEED FOR ZOOM-ZOOM.

200-HP 3.0-LITER V6 ENGINE 5-SPEED AUTOMATIC TRANSMISSION 4-WHEEL DISC BRAKES

ANTI-LOCK BRAKE SYSTEM (ABS) WITH ELECTRONIC BRAKEFORCE DISTRIBUTION (EBD)





## BODY OF A MINIVAN. SOUL OF A SPORTS CAR.

Imagine a minivan so responsive and well-balanced that it's actually exhilarating to drive. Fact is, the Mazda MPV's uncanny attributes have inspired automotive press accolades ranging from "more nimble" and "more fun" to "room with zoom." Propulsion comes courtesy of a potent, 200-hp V6 engine perfectly matched to an electronically controlled 5-speed automatic transmission. Power-assisted rack-and-pinion steering provides precise control. While gas-filled struts and shocks—plus front and rear stabilizer bars—promote handling that's truly confidence-inspiring. The result is a minivan equally adept at moving people, cargo and emotions.



**HARNESS UNEXPECTED POWER.** With 200 hp and 200 lb-ft of torque on tap, the Mazda MPV's advanced, 24-valve V6 is a willing workhorse. Whether you're hauling people, cargo or even a trailer, MPV's got the power.



**GIVE YOURSELF A BRAKE.** Power-assisted, ventilated 4-wheel disc brakes help promote fade-resistant stops. An Anti-lock Brake System (ABS) with Electronic Brakeforce Distribution (EBD) is also standard.







**YOU DIDN'T REALLY WANT TO BLEND IN WITH THE CROWD, DID YOU?**

Thanks to new styling that includes aggressive front and rear fascias, side sill extensions and even alloy wheels, this year's Mazda MPV is sportier than ever before. In fact, no matter how you look at it, you're definitely looking at one of a kind.





**EVEN THE DESIGN OF ITS COCKPIT FLIES IN THE FACE OF CONVENTION.**

Thanks to a driver-centric cockpit, the Mazda MPV provides its pilot with an array of unexpected, unminivan-like rewards. Its tilt steering wheel and driver's seat with adjustable lumbar support, both standard, help you achieve an ideal driving position. Essential controls all fall easily to hand. Gauges are large and legible. Even controls for the AM/FM/CD stereo and cruise control are steering-wheel-mounted. Power windows, mirrors and door locks are also standard. And the CFC-free air conditioning includes both front and rear controls. In short, the MPV's cockpit is designed to perform two key functions: Anticipate your expectations. Then exceed them.



**KEEP AN OPEN MIND.** Power sliding doors (standard on the ES, available on the LX), open or close at the touch of a button on the dash, door pillars or the keyless entry system. A "power off" dashboard switch prevents accidental operation.



**THINK SAFE THOUGHTS.** Advanced 2-stage front air bags\* with belt-use, passenger-weight and driver's seat-position sensors are standard. Dual front side-impact air bags\* are standard on the ES and available on the LX.  
\*Always wear your safety belt and secure children in the rear seat.





## GOOD SEATS STILL AVAILABLE FOR TODAY'S PERFORMANCE.

The Mazda MPV is that rarest of creatures: A minivan you'll actually want to drive for the sheer joy of it. Tackle weekday commutes. Run weekend errands. Haul everything from grown-ups and kids to cargo. All with a serene smile. The MPV's ingeniously engineered seats provide remarkable versatility. And its dual power sliding doors with remote control (standard on ES, available on LX) make loading and unloading a snap. In fact, everywhere you turn, useful features abound. Like 12 beverage holders—including 4 for bottles. An array of storage compartments, courtesy and map lights. Plus a deep cargo well behind the rear seat that's ideal for everything from gear to groceries. Talk about food for thought.



**HAVE A SEAT.** The MPV's reclining Tumble-Under™ rear seat is so versatile, you can even flip it completely backward to create "tailgate" seating that's perfect for picnics, outdoor sports and other activities.\*



**EXERCISE YOUR OPTIONS.** With the simple pull of a strap, the MPV's spring-assisted Tumble-Under™ rear seat also folds flat into the floor to provide extra space for bulky equipment or cargo.\*



**PART COMPANY.** The MPV's ingenious Side by Slide™ 2nd-row bench seat lets you create extra space, and luxury, by separating into two reclining captain's chairs, complete with fold-down armrests.\*

\*Be sure your MPV is in park with the engine off.



## WHO SAYS YOU CAN'T TAKE IT WITH YOU?

With a Mazda MPV, your weekend options are wide open. Because when you add an available trailer hitch, wiring harness, plus the 4-Seasons & Towing Package, you can tow up to 3,000 pounds. So if the family toy box includes a motorcycle or watercraft, you don't have to think twice about bringing it along. Equally important, in an MPV you also don't have to think twice about safety. The MPV boasts 4-wheel disc brakes plus an Anti-lock Brake System (ABS) with Electronic Brakeforce Distribution (EBD) for enhanced braking control and effectiveness. "Triple H" steel structural reinforcements for extra strength and impact protection. Front and rear crumple zones to help absorb collision energy. Plus a Five-Star safety rating, the highest possible, in U.S. government tests for driver and passenger protection in frontal and side impacts.\* When it comes to versatility, power and safety, Mazda MPV is pulling for you all the way.



**MAKE YOURSELF COMFORTABLE.** Mazda MPV's dual sliding doors feature power up-and-down windows for extra comfort and convenience. How refreshingly thoughtful.



5-STAR SAFETY RATING

\*For complete test results, visit: [www.nhtsa.dot.gov](http://www.nhtsa.dot.gov).



**TAKE THE SHOW ON THE ROAD.** This optional complete Rear-Seat Entertainment System features a full-color, flip-down 7" monitor and plays DVDs as well as audio and MP3 CDs. A remote control and 2 sets of wireless headphones are included.




**OPEN WIDE AND SAY "AHHH!"** With its 2nd-row seats removed and 3rd-row seats folded away, the MPV serves up a whopping 127 cu ft (124.5 with moonroof) of cargo space for your favorite equipment, gear and toys.




## GENUINE MAZDA ACCESSORIES: WHERE STYLE MEETS SUBSTANCE.

Part of the joy of owning a new Mazda MPV is personalizing it. And the best way to enhance its appearance or performance is with Genuine Mazda Accessories. In fact, all Genuine Mazda Accessories installed by your Mazda dealer, prior to or at initial vehicle retail delivery, carry the same new-vehicle limited warranty as your new Mazda MPV. See your dealer for details.



**WING IT.** Add the sporty touch of a rear roof spoiler to your MPV. On the practical side, it will also help keep your rear window free from dust and snow for better visibility.



**GIVE YOURSELF AN EDGE.** Protect the outer edge of your MPV's front doors with color-matched door edge guards. Each set of guards is custom-made to the exact contours of your Mazda.



**GET ORGANIZED.** Add this versatile cargo organizer and get even more into your MPV. Flip up the panels to expose a compartmented space to organize your groceries, sports equipment or shopping. Or flip down for a flat floor.

- Carpet cargo mat
- Carpet floor mats
- DVD-based Rear-Seat Entertainment System
- Fog lights
- Seat covers
- First aid kit
- Roadside emergency kit
- All-weather floor mats
- Rear bumper step plate
- Roof rack
- Hood bug deflector
- Compass and outside temperature auto-dimming mirror

- Front mask
- Cassette player
- Cargo net
- Aluminum pedal set
- 16-inch polished alloy wheels
- Silver carbon-fiber-look dash kit
- Trailer hitch and trailer-hitch wiring harness
- In-dash 6-disc CD changer
- MiniDisc player
- Assist grips
- Ski attachment (roof-rack mount)
- Bike attachment (roof-rack mount or trailer-hitch mount)

- Roof cargo box (long)
- Roof cargo box (short)
- Silver carbon-fiber-look front-seat side table panel
- Door edge guards
- Roof luggage basket with stretch net
- Front and rear ashtrays/cigarette lighter
- Windshield sunscreen
- SIRIUS satellite radio receiver kit\*
- Remote start/security system\*
- Wheel locks
- Engine block heater
- Touch-up paint

\*Late Availability

**PRODUCT CHANGES AND OPTIONS AVAILABILITY:** Following publication of this brochure, certain changes in standard equipment, options, prices and the like, or product delays may have occurred which would not be included in these pages. Your Mazda dealer is your best source for up-to-date information. Mazda reserves the right to change product specifications at any time without incurring obligations. Options shown or described in this brochure are available at extra cost and may be offered only in combination with other options or subject to additional ordering requirements or limitations.





**INTERIOR FEATURES**

	LX	ES
Advanced 2-stage front air bags* with belt-use, passenger-weight and driver's seat-position sensors	S	S
Front seat-mounted side-impact air bags* with coverage for head and chest areas	P	S
3-point safety belts for outboard seating positions; lap belt for rear center passenger	S	S
Front safety belt pretensioners with force limiters	S	S
2nd- and 3rd-row LATCH child-seat anchors	S	S
Reclining front bucket seats; adjustable driver's lumbar support and cushion angle	S	S
8-way power driver's seat	—	S
Fold-down armrests for front seats; 4 fold-down armrests for 2nd-row seats	S	S
Removable Side by Slide™ 2nd-row seat	S	S
Tumble-Under™ 3-passenger rear seat with tailgate seat function	S	S
Cloth upholstery	S	—
Leather-trimmed upholstery;† leather-wrapped steering wheel and parking-brake grip; carbon-fiber-look interior trim	—	S
Carpet floor mats and cargo mat	O/P/A	S
Power windows with 1-touch-down driver's window; lighted switch for driver's door	S	S
Flip-open rear quarter windows	S	S
Power door locks with 2-stage unlocking (driver's door only/all doors plus liftgate)	S	S
Tilt steering wheel	S	S
Cruise control with steering-wheel-mounted controls	S	S
Remote keyless illuminated entry system	S	S
Pullout storage drawer under front passenger seat; folding front-seat side table	S	S
Lockable glove compartment with light; center-console storage bin (holds 12 CDs); coin-storage box	S	S
Overhead console with two storage compartments (not available with moonroof)	S	S
12 cup holders, including 4 bottle holders in doors	S	S
Rope hooks, shopping-bag hooks and 12-volt power outlet in rear cargo area	S	S
Driver's and passenger's lighted vanity mirrors with covers	S	S
Front map lights; courtesy lights on ceiling, liftgate and front doors	S	S
Ignition-keyhole light	S	S
CFC-free front and rear air conditioning	S	S
100-watt AM/FM/CD stereo with 6 speakers and digital clock	S	—
180-watt AM/FM/CD stereo with in-dash 6-disc CD changer and digital clock; Super Sound system with 9 speakers, including subwoofer	P	S
Steering-wheel-mounted audio controls	S	S

**MECHANICAL FEATURES**

	LX	ES
3.0L DOHC 24-valve V6 engine	S	S
5-speed electronically controlled automatic overdrive transmission	S	S
Front-wheel drive	S	S
Traction Control System	P	S
Independent strut-type front suspension with coil springs and stabilizer bar; torsion-beam rear suspension with coil springs and stabilizer bar	S	S
Power-assisted rack-and-pinion steering and 4-wheel disc brakes	S	S
Anti-lock Brake System (ABS) with Electronic Brakeforce Distribution (EBD)	S	S

**EXTERIOR FEATURES**

	LX	ES
16-inch alloy wheels; P215/60R16 H-rated all-season radial tires	S	—
17-inch alloy wheels; P215/60R17 H-rated all-season radial tires	P	S
Sport-type front and rear fascias with silver accents	S	S
Side sill extensions with silver accents	S	S
Body-color body-side moldings	P	S
Dual sliding rear doors with power up-and-down windows	S	S
Dual power sliding rear doors	O†	S
Dual black power remote mirrors	S	S
2-speed variable-intermittent windshield wipers; intermittent rear wiper/washer	S	S
Privacy-tint glass on rear doors, rear quarter windows and liftgate	P	S
Clear-lens halogen fog lights	P	S
Front fender-mounted turn-signal repeater lights	S	S

**SPECIFICATIONS**

Engine size and type	Type AJD 3.0L DOHC 24-valve V6; all-alloy construction
Horsepower	200 @ 6200 rpm
Torque, lb-ft	200 @ 3000 rpm
Ignition; fuel system	Distributorless electronic; multipoint electronic fuel injection
Fuel capacity; type	19.8 gallons; regular unleaded gasoline
EPA estimated fuel economy, mpg	18 city/25 highway
Body	Steel unibody with "Triple H" construction
Steering	Rack-and-pinion with engine-speed-sensing variable power assist
Turning circle, curb-to-curb	37.4 feet
Brakes	10.8-inch ventilated front discs; 11.3-inch ventilated rear discs
Base curb weight	3772 lb

**OPTIONS AND OPTION PACKAGES**

	LX	ES
<b>LX Plus Package:</b> Privacy-tint glass on rear windows and liftgate; windshield sunshade band; body-color body-side moldings; fog lights; carpet floor mats and cargo mat	O	S
<b>All-Sport Package</b> (requires Traction Control and Side Air Bags Package): 17" alloy wheels with P215/60R17 all-season tires; 180-watt, 9-speaker Super Sound system with in-dash 6-disc CD changer; leather-wrapped steering wheel; compass/outside temperature auto-dimming mirror; rear roof spoiler	O†	—
<b>4-Seasons and Towing Package:</b> Increased engine and transmission cooling capacity; 3000-lb towing capacity; heavy-duty battery and wiper motor; heated mirrors; rear heater with rear controls; larger washer-fluid tank	O†	O
<b>Traction Control and Side Air Bags Package:</b> Traction Control System and front side-impact air bags	O†	S
Roof rack	O/A	O/A
Rear roof spoiler	O/P/A	O/A
Rear bumper step plate	O/A	O/A
Pearlescent paint (Whitewater Pearl)	O	O
Rear-Seat Entertainment System with DVD player and flip-down video screen	O/A	O/A
Compass and outside temperature auto-dimming mirror	O/P/A	O/A
Cargo net	O/A	O/A
Cargo organizer	O/A	O/A
Wheel locks	O/A	O/A
Class II trailer-hitch receiver and wiring harness	O/A	O/A
Power sliding rear doors; operable from keyless remote	O†	S
Power sliding-glass moonroof with retractable sunshade	O†	O
Cassette player	O/A	O/A
Door edge guards (body color)	O/A	O/A
All-weather floor mats (late availability)	O/A	O/A

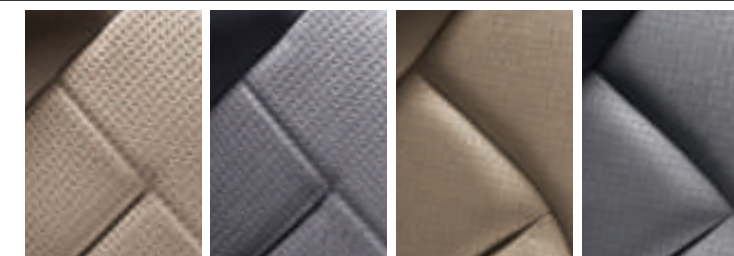
**EXTERIOR DIMENSIONS (inches)**

Wheelbase/overall length	111.8/189.5
Overall height	LX: 68.7, 69.1 with 17" wheels; ES: 69.1
Overall width	72.1
Track, front/rear	60.6/61.0

**INTERIOR DIMENSIONS (inches)**

	front	middle	rear
Headroom	41.0	39.3	38.0
Headroom (with moonroof)	39.0	37.4	38.0
Legroom	40.8	37.0	35.6
Shoulder room	59.8	60.8	58.1

**INTERIOR FABRICS**



**BEIGE CLOTH** MPV LX    **GRAY CLOTH** MPV LX    **BEIGE LEATHER** MPV ES    **GRAY LEATHER** MPV ES

S : Standard    O : Optional    P : Package option    A : Dealer-installed accessory    — : Not available  
 \* Always wear your safety belt and secure children in the rear seat. † Seating surfaces upholstered in leather except for leather-look vinyl on seat side panels, rear sides of seatbacks and other minor areas. ‡ Requires LX Plus Package.

www.MazdaUSA.com Wherever you see this symbol, you can get the whole story on our interactive Web site.

**EXTERIOR COLORS**



**BLACK MICA**  
 • Mazda MPV LX    Gray Cloth  
 • Mazda MPV ES    Gray Leather



**SUNLIGHT SILVER METALLIC**  
 • Mazda MPV LX    Gray Cloth  
 • Mazda MPV ES    Gray Leather



**TITANIUM GRAY METALLIC**  
 • Mazda MPV LX    Gray Cloth  
 • Mazda MPV ES    Gray Leather



**RAZOR BLUE METALLIC**  
 • Mazda MPV LX    Gray or Beige Cloth  
 • Mazda MPV ES    Gray or Beige Leather



**TSUNAMI BLUE MICA**  
 • Mazda MPV LX    Gray or Beige Cloth  
 • Mazda MPV ES    Gray or Beige Leather



**RALLY WHITE**  
 • Mazda MPV LX    Beige Cloth  
 • Mazda MPV ES    Beige Leather



**WHITewater PEARL (OPTIONAL)**  
 • Mazda MPV LX    Beige Cloth  
 • Mazda MPV ES    Beige Leather



**NORDIC GREEN MICA**  
 • Mazda MPV LX    Beige Cloth  
 • Mazda MPV ES    Beige Leather



**COSMIC SAND METALLIC**  
 • Mazda MPV LX    Beige Cloth  
 • Mazda MPV ES    Beige Leather



## A MORE EXHILARATING ROUTE TO MAKING THE RIGHT CHOICE.

It starts with the **Mazda Test-Drive Experience**—a uniquely designed road trip engineered to take you miles beyond the ordinary test drive. It's all about putting a Mazda to the test under real-world conditions. Down local streets, highways, on-ramps and off-ramps. Through straightaways, S-curves and corners. It's also all about discovering the superb acceleration, braking, steering, handling and ride quality that every Mazda offers. And rediscovering that fun, connected-to-the-road feeling we call "Zoom-Zoom."

## A MORE LIBERATING APPROACH TO OWNER PEACE OF MIND.

Once you become a new Mazda owner, you'll enjoy the peace of mind the **2004 Mazda Driver's Assurance Plan** delivers. It includes the freedom of a **48-month/50,000-mile "bumper-to-bumper" limited warranty**, plus **24/7 Emergency Roadside Assistance**. And should your Mazda MPV require a warranty repair, the **Mazda Service Transportation Solution** can typically provide another vehicle to drive. After all, we want your new Mazda to be a source of pride and exhilaration for years to come. (See your Mazda dealer for details.)

## A MORE COMPELLING WAY TO CONNECT WITH ZOOM-ZOOM.

Speaking of exhilaration, add Mazda's Web site to your list of must-see destinations. You can preview the new 2004 Mazdas. Look into seasonal incentives or special service offers. Pick up maintenance tips. Visit the Mazda Performance Corner for updates on driving technology, tuning and motorsports. Interactively "build" the Mazda MPV of your dreams and see how it will look. Request a quote. Even locate a Mazda dealer.

It all translates into a lot more Zoom-Zoom at: [MazdaUSA.com](http://MazdaUSA.com)





